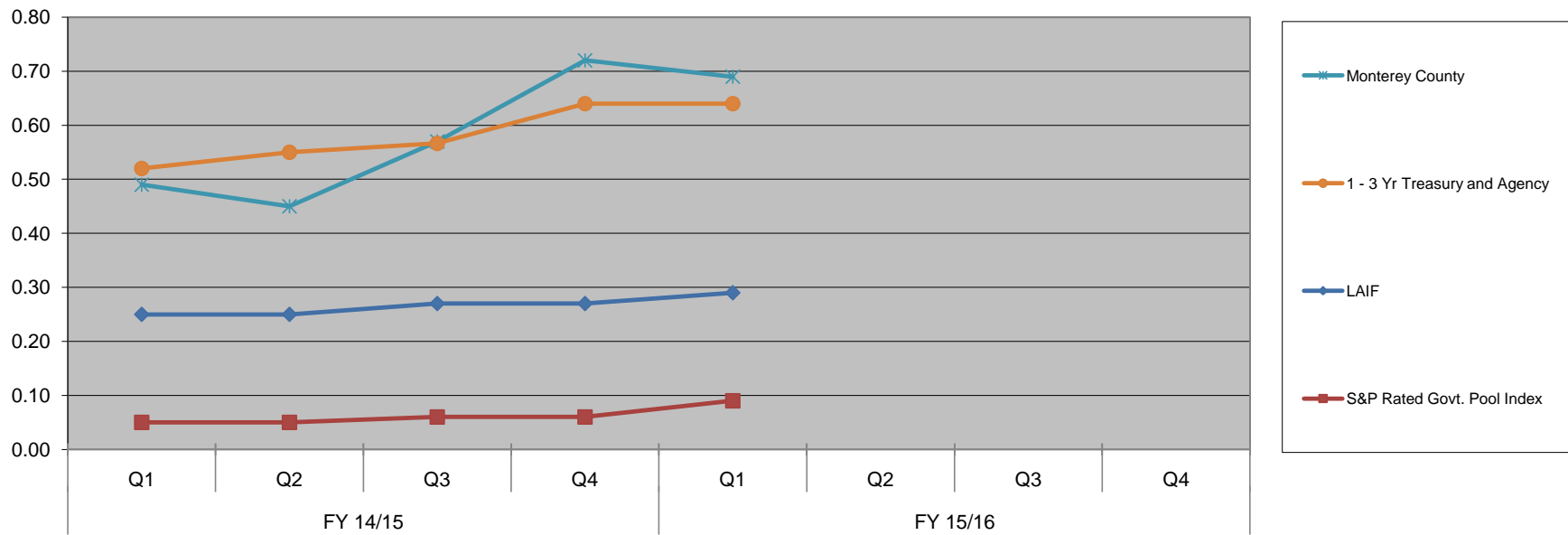


Exhibit C Monterey County Historical Yields vs. Benchmarks



Quarterly Yield	FY 14/15				FY 15/16			
	Q1	Q2	Q3	Q4	Q1	Q2	Q3	Q4
Monterey County	0.49	0.45	0.57	0.72	0.69			
1 - 3 Yr Treasury and Agency	0.52	0.55	0.57	0.64	0.64			
LAIF	0.25	0.25	0.27	0.27	0.29			
S&P Rated Govt. Pool Index	0.05	0.05	0.06	0.06	0.09			

The S&P Index yields are obtained from Bloomberg

The 1-3 Yr Treas and Agy yields are obtained from the B of A Merrill Lynch Global Bond Indices/Bloomberg