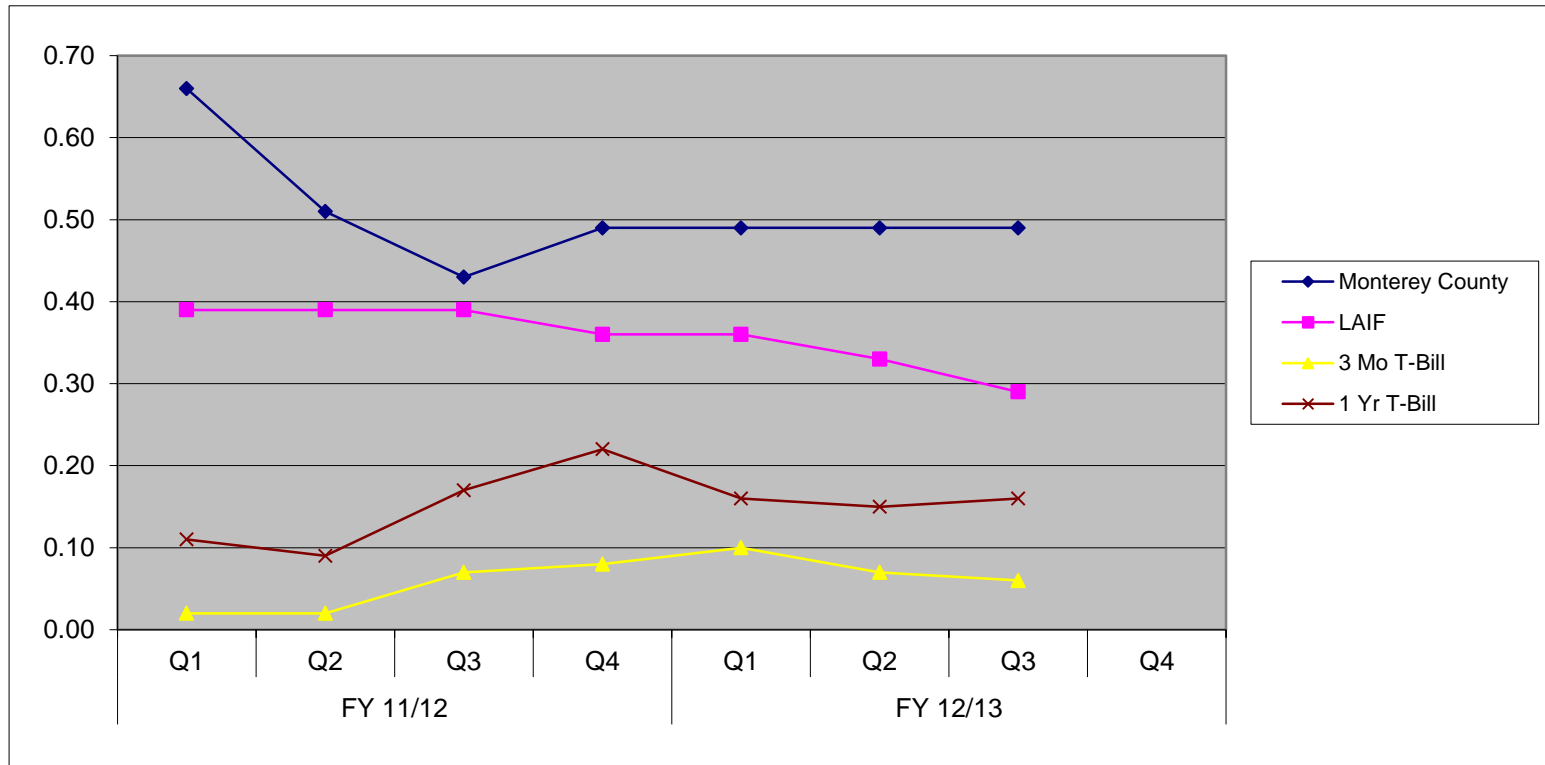


Exhibit C

Monterey County Historical Yields vs. Benchmarks



Quarterly Yield	FY 11/12				FY 12/13			
	Q1	Q2	Q3	Q4	Q1	Q2	Q3	Q4
Monterey County	0.66	0.51	0.43	0.49	0.49	0.49	0.49	
LAIF	0.39	0.39	0.39	0.36	0.36	0.33	0.29	
3 Mo T-Bill	0.02	0.02	0.07	0.08	0.10	0.07	0.06	
1 Yr T-Bill	0.11	0.09	0.17	0.22	0.16	0.15	0.16	

- The 3Mo and 1 Yr T-Bill yields are obtained from the B of A Merrill Lynch Global Bond Indices