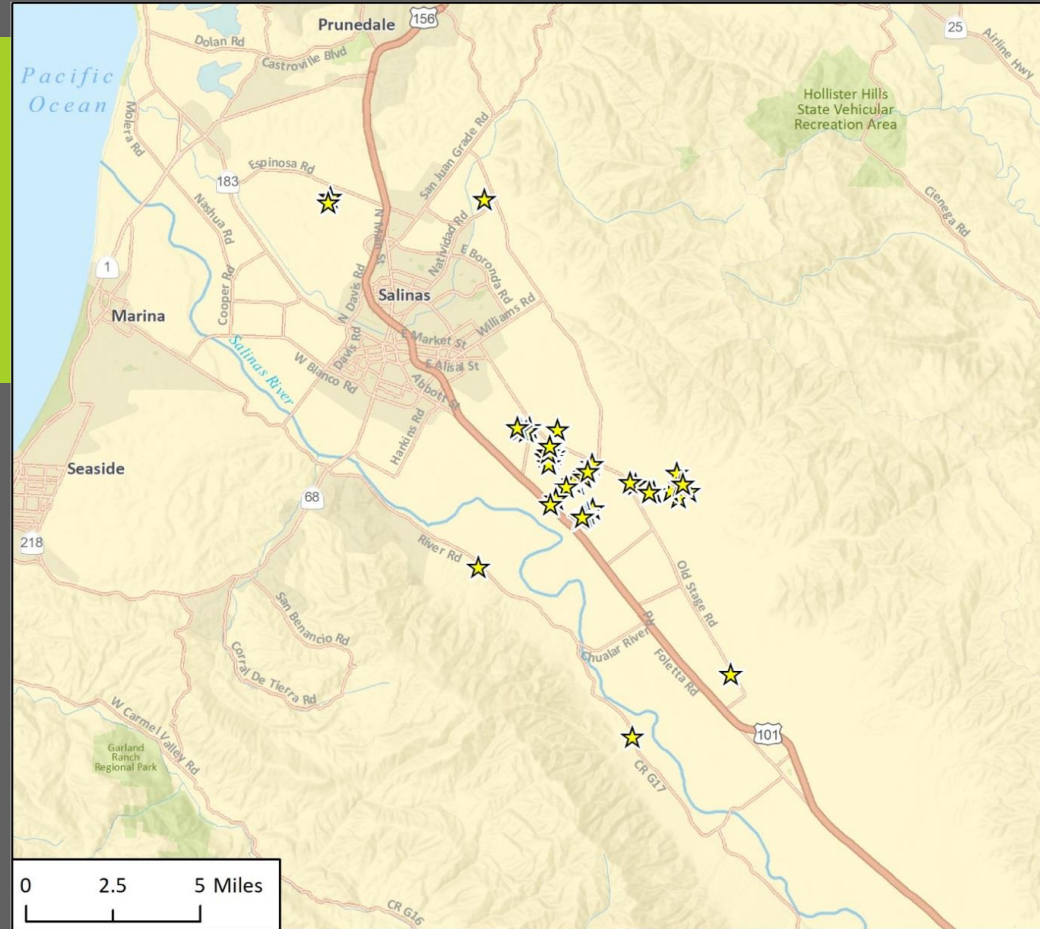


Board of Supervisors December 1, 2020

Initial Study/Mitigated Negative
Declaration for Multiple Cannabis
Cultivation Sites

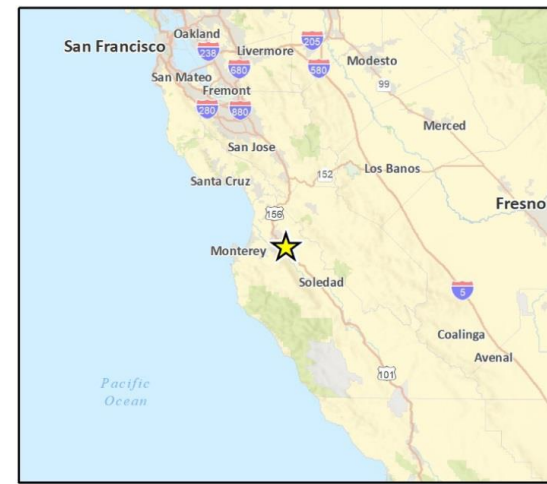
PROJECT

- Adopt an IS/MND
- Adopt a Mitigation Monitoring and Reporting Plan; and
- Accept a checklist



Imagery provided by Esri and its licensors © 2019.

★ Project Sites



BACKGROUND

- CEQA requires consideration of cumulative effects
 - Impact of successive projects of the same type in the same area over time
 - Cumulative Impacts can disqualify individual projects from being Categorially Exempt
- 13 applications approved
 - Each exempt from CEQA
- Overtime ~70 applications for commercial cannabis cultivation were received
 - Increases in traffic and energy demand presented cumulative effects needing assessment
- Environmental Review Required

INITIAL STUDY

- 45 cannabis applicants agreed to fund preparation of a study that examines the cumulative effects on the environment [Initial Study (IS)]
 - Draft submitted to the County
 - County staff reviewed and revised IS to reflect County's independent judgement
- Mitigation Measures added to address traffic impacts
- No significant impacts with mitigation [Mitigated Negative Declaration (MND)]
- Circulated for public review and comment

COMMENTS

- CalCannabis
 - Seeking more site-specific information and clarification
- Air District (MBARD)
 - Clarifying Air District requirements
- CalTrans
 - Thanking County for addressing State Highways
- Clarifications and Amplifications to the IS/MND
 - No recirculation required
- Checklist will provide information for individual projects
 - Establishes thresholds that if exceeded will require further review
 - Provides site-specific information for State Licensing

MITIGATION

- TRA₁ - Direct Impacts on intersection of Old Stage Rd and Spence Road
 - Turn lane required
- TRA₂ - Payment of Regional Impact Fee
- TRA₃ - Fair Share Payments for cumulative impacts
 - 45 cannabis applications plus existing and future development
- Proposed Revisions to TRA₁
 - As Drafted County will collect fees and improve intersection
 - Proposed revisions would require applicants to fund and improve intersection
 - Improvement timing must be before new traffic is added

TRA 1 - INTERSECTION IMPROVEMENTS

Opinion of Probable Cost for Spence & Old Stage Road Intersection Mitigation Improvements						
Item No.	Item Description	Estimated Quantity	Unit	Unit Cost	Rick Engineering Estimate (Privately Managed Project)	County Managed Project (Add Prevailing Wage 40% to Estimate) ⁵
1	Mobilization ² (15% of all other items)	1	LS	-	\$13,339.20	\$18,675
2	Traffic Control ² (15% of all other items)	1	LS	-	\$13,339	\$18,675
3	Construction/ Project Management ² (35% of all other items)	1	LS	-	\$31,125	\$43,575
EARTHWORK						
4	Import and Compaction	50	CY	\$26	\$1,300	\$1,820
SURFACE IMPROVEMENTS						
5	AC Pavement	16	TON	\$140	\$2,240	\$3,136
6	Cement Treated Base (CTB)	20	CY	\$220	\$4,400	\$6,160
TRAFFIC IMPROVEMENTS						
7	Signing and Striping	4336	LF	\$4	\$17,344	\$24,282
UTILITIES IMPROVEMENTS						
8	Drainage System ³	1	LS	\$15,000	\$20,000	\$28,000
9	Overhead Utilities Relocation-Service/Support Pole ⁴	1	EA	\$20,000	\$25,000	\$35,000
SUBTOTAL					\$128,087	\$179,322
CONTINGENCY (20%)					\$25,620	\$35,870
TOTAL ESTIMATE					\$153,710	\$215,200
COST PER PROJECT					\$3,416	\$4,782

Notes:

- 1 Unit costs and quantities shown as determined by Rick Engineering Estimate dated 04/06/2020
- 2 Mobilization, Traffic Control and Construction/Project Management added to Rick Engineering Estimate
- 3 Unit cost increased from \$15,000 to \$20,000
- 4 Unit cost increased from \$20,000 to \$25,000
- 5 If County Constructs improvements, a 40% markup for prevailing wage is assumed

RECOMMENDATION

- Adopt an IS/MND
 1. Adopt a Mitigation Monitoring and Reporting Plan (MMRP) with revisions to require applicants improve intersection; or
 2. Adopt MMRP as drafted in the IS/MND and direct Public Works to collect fees and improve intersection with revised cost estimates
- Accept the checklists to be prepared for individual projects