



Monterey County

168 West Alisal Street,
1st Floor
Salinas, CA 93901
831.755.5066

Board Order

Upon motion of Supervisor Potter, seconded by Supervisor Parker and carried by those members present, the Board of Supervisors hereby:

Received a presentation on the East-West Wing Renovation Project.

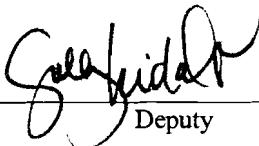
PASSED AND ADOPTED on this 29th day of September 2015, by the following vote, to wit:

AYES: Supervisors Armenta, Phillips, Salinas, Parker and Potter
NOES: None
ABSENT: None

I, Gail T. Borkowski, Clerk of the Board of Supervisors of the County of Monterey, State of California, hereby certify that the foregoing is a true copy of an original order of said Board of Supervisors duly made and entered in the minutes thereof of Minute Book 78 for the meeting on September 29, 2015.

Dated: October 16, 2015
File ID: 15-1006

Gail T. Borkowski, Clerk of the Board of Supervisors
County of Monterey, State of California

By  Deputy



Monterey County

168 West Alisal Street,
1st Floor
Salinas, CA 93901
831.755.5066

Board Order

Upon motion of Supervisor Potter, seconded by Supervisor Parker and carried by those members present, the Board of Supervisors hereby:

Received a presentation on the East-West Wing Renovation Project.

PASSED AND ADOPTED on this 29th day of September 2015, by the following vote, to wit:

AYES: Supervisors Armenta, Phillips, Salinas, Parker and Potter

NOES: None

ABSENT: None

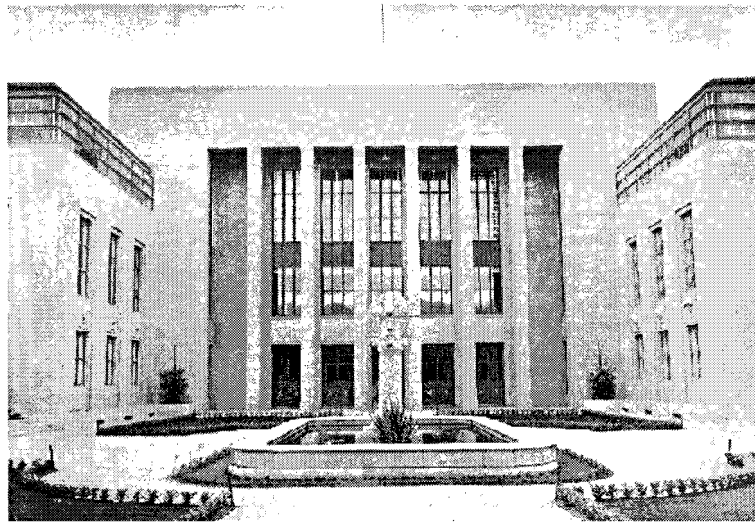
I, Gail T. Borkowski, Clerk of the Board of Supervisors of the County of Monterey, State of California, hereby certify that the foregoing is a true copy of an original order of said Board of Supervisors duly made and entered in the minutes thereof of Minute Book 78 for the meeting on September 29, 2015.

Dated: October 16, 2015
File ID: 15-1006

Gail T. Borkowski, Clerk of the Board of Supervisors
County of Monterey, State of California

By _____
Deputy

EAST-WEST WING RENOVATION PROGRAMMING & SPACE PLANS



Presented to:

COUNTY OF MONTEREY BOARD OF SUPERVISORS

SEPTEMBER 2015

AREA SUMMARY PER TENANT

District Attorney:

West Wing First Floor	17,405 s.f. gross	9,968 s.f. net
West Wing Second Floor	15,754 s.f. gross	10,335 s.f. net
West Wing Third Floor	15,754 s.f. gross	9,241 s.f. net
West Wing Loft	5,708 s.f. gross	3,683 s.f. net
East Wing Second Floor	<u>10,292 s.f. gross</u>	<u>6,914 s.f. net</u>
Total	64,913 s.f. gross	40,141 s.f. net

Food Service

East Wing First Floor	1,190 s.f. net
-----------------------	----------------

Law Library

East Wing First Floor	1,541 s.f. net
-----------------------	----------------

Grand Jury

East Wing First Floor	1,505 s.f. net
-----------------------	----------------

District 2 Supervisor

East Wing First Floor	672 s.f. net
-----------------------	--------------

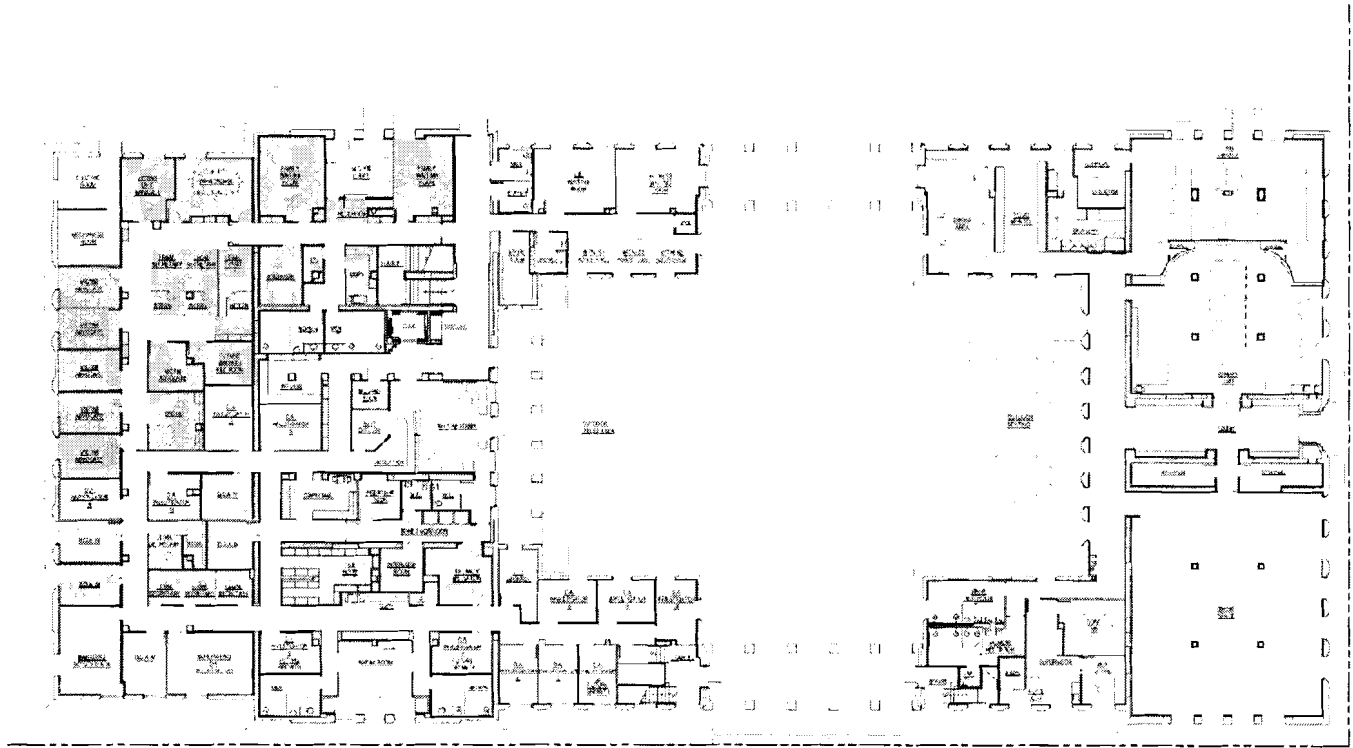
Swing Space

East Wing First Floor	<u>2,465 s.f. net</u>
Total	7,373 s.f. net

Common Area

3,044 s.f. gross





GEORGE STREET

**WEST WING
AREA SUMMARY**

WEST ALISA STREET

**EAST WING
AREA SUMMARY**

FIRST FLOOR PLAN

First Floor Plan

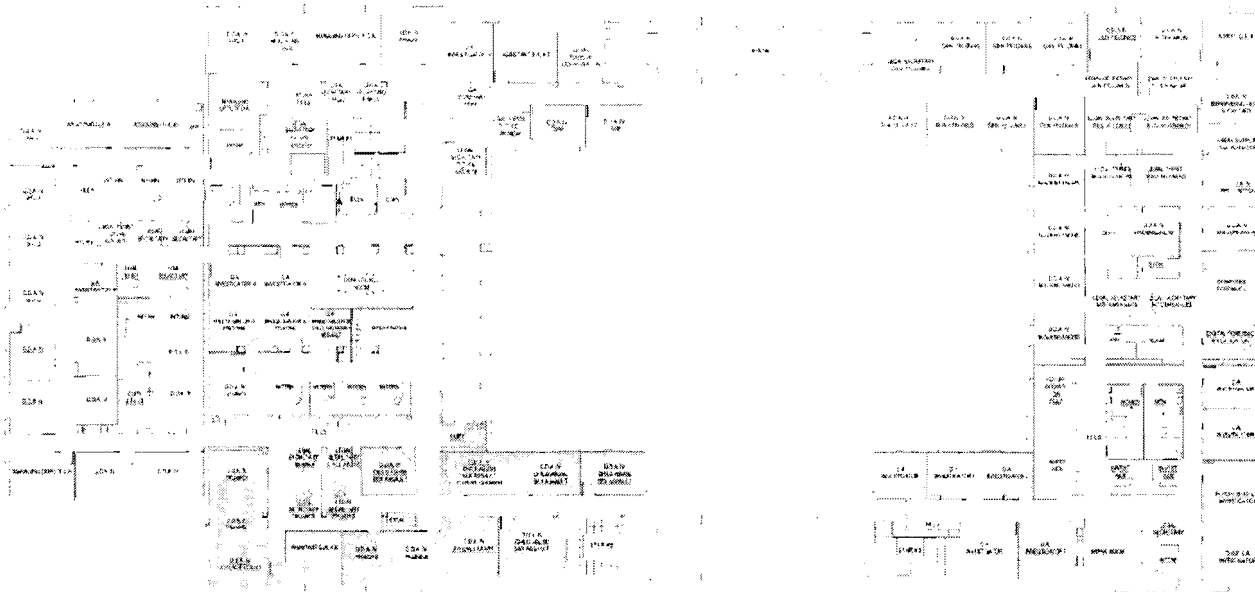


**EAST-WEST WING RENOVATION
PROGRAMMING & SPACE PLANS
SEPTEMBER 2015**

Project History

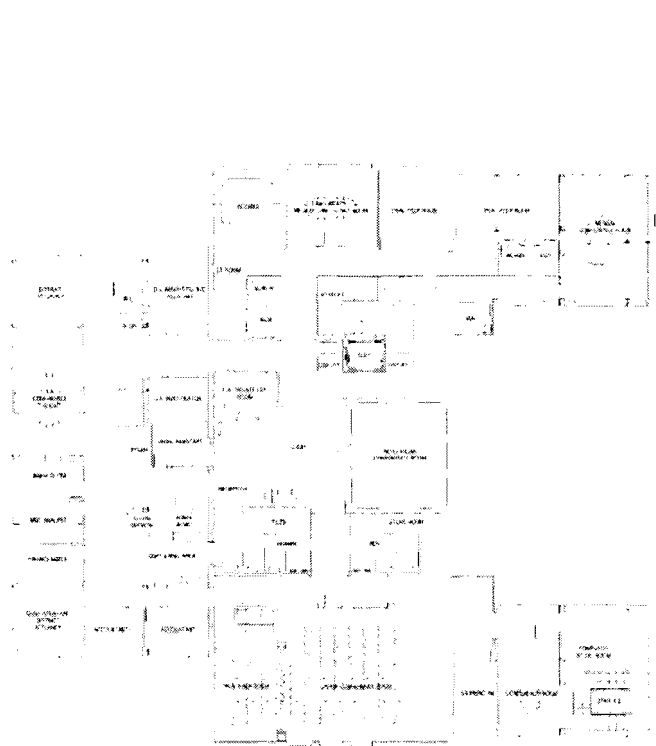
- Aug 2001:** Proposed East/West Project for Renovation (Project) approved by Board of Supervisors.
- Aug 2006:** Construction Documents Completed; Funding redirected; Project put on hold.
- Oct 2010:** E/W tenants relocated to North Wing/Modulars; building vacated.
- Jan 2013:** Board of Supervisors approve financing of Project.
- Sep 2013:** County approves Space & Programming Study of Project for new tenants.
- Jun 2014:** Study by WRD determines District Attorney, Law Library, a snack shop, and Learning & Development can be accommodated in E/W.
- Aug 2014:** Acquisition of Schilling Place puts the Project on hold.
- Nov 2014:** Facilities Utilization Program (FUP) Master Plan determines E/W is a vital link that must be completed.
- May 2015:** Board authorizes proceeding with Project and issuance of COPs.
- Jun 2015:** E/W Study is updated to reflect FUP's Master Plan





**WEST WING
AREA SUMMARY**

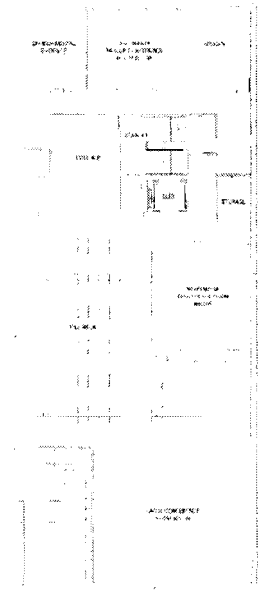
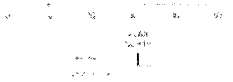
DESCRIPTION	AREA
RECEPTION	100
CONFERENCE	200
OFFICE	300
LABORATORY	400
STORAGE	500
RESTROOM	600
STAIR	700
ELEVATOR	800
MECHANICAL	900
UTILITY	1000
ENTRY	1100
LOBBY	1200
RECEPTION	1300
CONFERENCE	1400
OFFICE	1500
LABORATORY	1600
STORAGE	1700
RESTROOM	1800
STAIR	1900
ELEVATOR	2000
MECHANICAL	2100
UTILITY	2200
ENTRY	2300
LOBBY	2400
RECEPTION	2500
CONFERENCE	2600
OFFICE	2700
LABORATORY	2800
STORAGE	2900
RESTROOM	3000
STAIR	3100
ELEVATOR	3200
MECHANICAL	3300
UTILITY	3400
ENTRY	3500
LOBBY	3600
RECEPTION	3700
CONFERENCE	3800
OFFICE	3900
LABORATORY	4000
STORAGE	4100
RESTROOM	4200
STAIR	4300
ELEVATOR	4400
MECHANICAL	4500
UTILITY	4600
ENTRY	4700
LOBBY	4800
RECEPTION	4900
CONFERENCE	5000
OFFICE	5100
LABORATORY	5200
STORAGE	5300
RESTROOM	5400
STAIR	5500
ELEVATOR	5600
MECHANICAL	5700
UTILITY	5800
ENTRY	5900
LOBBY	6000
RECEPTION	6100
CONFERENCE	6200
OFFICE	6300
LABORATORY	6400
STORAGE	6500
RESTROOM	6600
STAIR	6700
ELEVATOR	6800
MECHANICAL	6900
UTILITY	7000
ENTRY	7100
LOBBY	7200
RECEPTION	7300
CONFERENCE	7400
OFFICE	7500
LABORATORY	7600
STORAGE	7700
RESTROOM	7800
STAIR	7900
ELEVATOR	8000
MECHANICAL	8100
UTILITY	8200
ENTRY	8300
LOBBY	8400
RECEPTION	8500
CONFERENCE	8600
OFFICE	8700
LABORATORY	8800
STORAGE	8900
RESTROOM	9000
STAIR	9100
ELEVATOR	9200
MECHANICAL	9300
UTILITY	9400
ENTRY	9500
LOBBY	9600
RECEPTION	9700
CONFERENCE	9800
OFFICE	9900
LABORATORY	10000
STORAGE	10100
RESTROOM	10200
STAIR	10300
ELEVATOR	10400
MECHANICAL	10500
UTILITY	10600
ENTRY	10700
LOBBY	10800
RECEPTION	10900
CONFERENCE	11000
OFFICE	11100
LABORATORY	11200
STORAGE	11300
RESTROOM	11400
STAIR	11500
ELEVATOR	11600
MECHANICAL	11700
UTILITY	11800
ENTRY	11900
LOBBY	12000
RECEPTION	12100
CONFERENCE	12200
OFFICE	12300
LABORATORY	12400
STORAGE	12500
RESTROOM	12600
STAIR	12700
ELEVATOR	12800
MECHANICAL	12900
UTILITY	13000
ENTRY	13100
LOBBY	13200
RECEPTION	13300
CONFERENCE	13400
OFFICE	13500
LABORATORY	13600
STORAGE	13700
RESTROOM	13800
STAIR	13900
ELEVATOR	14000
MECHANICAL	14100
UTILITY	14200
ENTRY	14300
LOBBY	14400
RECEPTION	14500
CONFERENCE	14600
OFFICE	14700
LABORATORY	14800
STORAGE	14900
RESTROOM	15000
STAIR	15100
ELEVATOR	15200
MECHANICAL	15300
UTILITY	15400
ENTRY	15500
LOBBY	15600
RECEPTION	15700
CONFERENCE	15800
OFFICE	15900
LABORATORY	16000
STORAGE	16100
RESTROOM	16200
STAIR	16300
ELEVATOR	16400
MECHANICAL	16500
UTILITY	16600
ENTRY	16700
LOBBY	16800
RECEPTION	16900
CONFERENCE	17000
OFFICE	17100
LABORATORY	17200
STORAGE	17300
RESTROOM	17400
STAIR	17500
ELEVATOR	17600
MECHANICAL	17700
UTILITY	17800
ENTRY	17900
LOBBY	18000
RECEPTION	18100
CONFERENCE	18200
OFFICE	18300
LABORATORY	18400
STORAGE	18500
RESTROOM	18600
STAIR	18700
ELEVATOR	18800
MECHANICAL	18900
UTILITY	19000
ENTRY	19100
LOBBY	19200
RECEPTION	19300
CONFERENCE	19400
OFFICE	19500
LABORATORY	19600
STORAGE	19700
RESTROOM	19800
STAIR	19900
ELEVATOR	20000
MECHANICAL	20100
UTILITY	20200
ENTRY	20300
LOBBY	20400
RECEPTION	20500
CONFERENCE	20600
OFFICE	20700
LABORATORY	20800
STORAGE	20900
RESTROOM	21000
STAIR	21100
ELEVATOR	21200
MECHANICAL	21300
UTILITY	21400
ENTRY	21500
LOBBY	21600
RECEPTION	21700
CONFERENCE	21800
OFFICE	21900
LABORATORY	22000
STORAGE	22100
RESTROOM	22200
STAIR	22300
ELEVATOR	22400
MECHANICAL	22500
UTILITY	22600
ENTRY	22700
LOBBY	22800
RECEPTION	22900
CONFERENCE	23000
OFFICE	23100
LABORATORY	23200
STORAGE	23300
RESTROOM	23400
STAIR	23500
ELEVATOR	23600
MECHANICAL	23700
UTILITY	23800
ENTRY	23900
LOBBY	24000
RECEPTION	24100
CONFERENCE	24200
OFFICE	24300
LABORATORY	24400
STORAGE	24500
RESTROOM	24600
STAIR	24700
ELEVATOR	24800
MECHANICAL	24900
UTILITY	25000
ENTRY	25100
LOBBY	25200
RECEPTION	25300
CONFERENCE	25400
OFFICE	25500
LABORATORY	25600
STORAGE	25700
RESTROOM	25800
STAIR	25900
ELEVATOR	26000
MECHANICAL	26100
UTILITY	26200
ENTRY	26300
LOBBY	26400
RECEPTION	26500
CONFERENCE	26600
OFFICE	26700
LABORATORY	26800
STORAGE	26900
RESTROOM	27000
STAIR	27100
ELEVATOR	27200
MECHANICAL	27300
UTILITY	27400
ENTRY	27500
LOBBY	27600
RECEPTION	27700
CONFERENCE	27800
OFFICE	27900
LABORATORY	28000
STORAGE	28100
RESTROOM	28200
STAIR	28300
ELEVATOR	28400
MECHANICAL	28500
UTILITY	28600
ENTRY	28700
LOBBY	28800
RECEPTION	28900
CONFERENCE	29000
OFFICE	29100
LABORATORY	29200
STORAGE	29300
RESTROOM	29400
STAIR	29500
ELEVATOR	29600
MECHANICAL	29700
UTILITY	29800
ENTRY	29900
LOBBY	30000
RECEPTION	30100
CONFERENCE	30200
OFFICE	30300
LABORATORY	30400
STORAGE	30500
RESTROOM	30600
STAIR	30700
ELEVATOR	30800
MECHANICAL	30900
UTILITY	31000
ENTRY	31100
LOBBY	31200
RECEPTION	31300
CONFERENCE	31400
OFFICE	31500
LABORATORY	31600
STORAGE	31700
RESTROOM	31800
STAIR	31900
ELEVATOR	32000
MECHANICAL	32100
UTILITY	32200
ENTRY	32300
LOBBY	32400
RECEPTION	32500
CONFERENCE	32600
OFFICE	32700
LABORATORY	32800
STORAGE	32900
RESTROOM	33000
STAIR	33100
ELEVATOR	33200
MECHANICAL	33300
UTILITY	33400
ENTRY	33500
LOBBY	33600
RECEPTION	33700
CONFERENCE	33800
OFFICE	33900
LABORATORY	34000
STORAGE	34100
RESTROOM	34200
STAIR	34300
ELEVATOR	34400
MECHANICAL	34500
UTILITY	34600
ENTRY	34700
LOBBY	34800
RECEPTION	34900
CONFERENCE	35000
OFFICE	35100
LABORATORY	35200
STORAGE	35300
RESTROOM	35400
STAIR	35500
ELEVATOR	35600
MECHANICAL	35700
UTILITY	35800
ENTRY	35900
LOBBY	36000
RECEPTION	36100
CONFERENCE	36200
OFFICE	36300
LABORATORY	36400
STORAGE	36500
RESTROOM	36600
STAIR	36700
ELEVATOR	36800
MECHANICAL	36900
UTILITY	37000
ENTRY	37100
LOBBY	37200
RECEPTION	37300
CONFERENCE	37400
OFFICE	37500
LABORATORY	37600
STORAGE	37700
RESTROOM	37800
STAIR	37900
ELEVATOR	38000
MECHANICAL	38100
UTILITY	38200
ENTRY	38300
LOBBY	38400
RECEPTION	38500
CONFERENCE	38600
OFFICE	38700
LABORATORY	38800
STORAGE	38900
RESTROOM	39000
STAIR	39100
ELEVATOR	39200
MECHANICAL	39300
UTILITY	39400
ENTRY	39500
LOBBY	39600
RECEPTION	39700
CONFERENCE	39800
OFFICE	39900
LABORATORY	40000
STORAGE	40100
RESTROOM	40200
STAIR	40300
ELEVATOR	40400
MECHANICAL	40500
UTILITY	40600
ENTRY	40700
LOBBY	40800
RECEPTION	40900
CONFERENCE	41000
OFFICE	41100
LABORATORY	41200
STORAGE	41300
RESTROOM	41400
STAIR	41500
ELEVATOR	41600
MECHANICAL	41700
UTILITY	41800
ENTRY	41900
LOBBY	42000
RECEPTION	42100
CONFERENCE	42200
OFFICE	42300
LABORATORY	42400
STORAGE	42500
RESTROOM	42600
STAIR	42700
ELEVATOR	42800
MECHANICAL	42900
UTILITY	43000
ENTRY	43100
LOBBY	43200
RECEPTION	43300
CONFERENCE	43400
OFFICE	43500
LABORATORY	43600
STORAGE	43700
RESTROOM	43800
STAIR	43900
ELEVATOR	44000
MECHANICAL	44100
UTILITY	44200
ENTRY	44300
LOBBY	44400
RECEPTION	44500
CONFERENCE	44600
OFFICE	44700
LABORATORY	44800
STORAGE	44900
RESTROOM	45000
STAIR	45100
ELEVATOR	45200
MECHANICAL	45300
UTILITY	45400
ENTRY	45500
LOBBY	45600
RECEPTION	45700
CONFERENCE	45800
OFFICE	45900
LABORATORY	46000
STORAGE	46100
RESTROOM	46200
STAIR	46300
ELEVATOR	46400
MECHANICAL	46500
UTILITY	46600
ENTRY	46700
LOBBY	46800
RECEPTION	46900
CONFERENCE	47000



**WEST WING
AREA SUMMARY**

NO. OF ROOMS	100
TOTAL AREA	10,000
NET AREA	8,000
STAIRS	1,000
MECHANICAL	1,000
RECEPTION	1,000
STORAGE	1,000

THIRD FLOOR PLAN



**LOFT
AREA SUMMARY**

NO. OF ROOMS	50
TOTAL AREA	5,000
NET AREA	4,000
STAIRS	500
MECHANICAL	500
RECEPTION	500
STORAGE	500

LOFT FLOOR PLAN

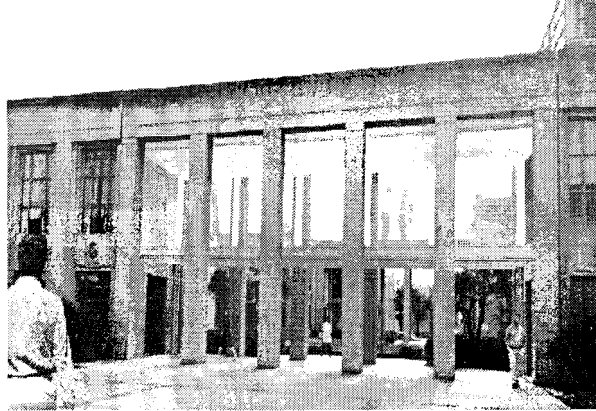


Third Floor Plan

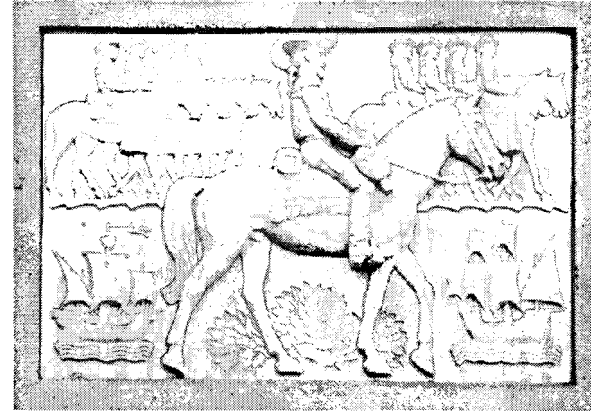


**EAST-WEST WING RENOVATION
PROGRAMMING & SPACE PLANS
SEPTEMBER 2015**

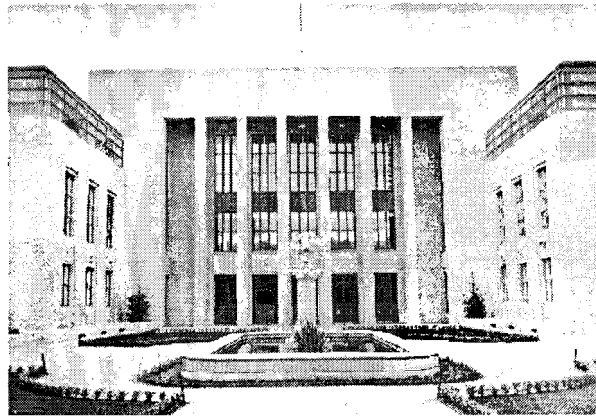
Project Features



New second floor secure District Attorney corridor bridge



Preservation of Joseph Jacinto Mura exterior artwork



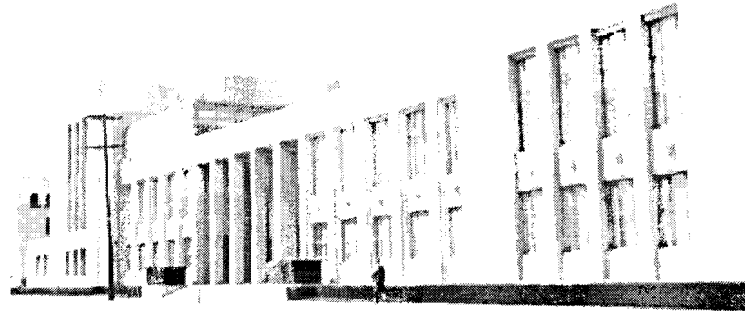
Restoration of Original Courtyard



Reuse of existing decorative elements



EAST-WEST WING RENOVATION PROGRAMMING & SPACE PLANS



End of Presentation

COUNTY OF MONTEREY BOARD OF SUPERVISORS

SEPTEMBER 2015