

Attachment F

This page intentionally left blank.

MICHAEL D. CLING
ATTORNEY AT LAW
313 MAIN STREET, SUITE D
SALINAS, CALIFORNIA 93901
TELEPHONE (831) 771-2040
FAX (831) 771-2050
EMAIL: mdc@michaelcling.com



October 1, 2019

Nadia Garcia
Resource Management Agency
County of Monterey
1441 Schilling Place South 2nd floor
Salinas, CA 93901

Re: Farmland Security Zone Application (Jensen)
A.P. No. 207-031-003

Dear Nadia:

The justification for allowing the 70.95 acre parcel to be the subject of a Farmland Security Zone Contract is as follows. The subject property is a parcel located on Hitchcock Road in the midst of the Blanco Area of the Salinas Valley which comprises the most productive and valuable vegetable row crop farmland in the Salinas Valley. A substantial number of the agricultural parcels in the immediate vicinity of the subject property are less than 100 acres in size, including those that immediately surround the subject property. Assessor parcel maps and sizes are included with this submittal to demonstrate a pattern of parcelization of agricultural parcels less than 100 acres in size.

In addition, we include an excerpt from Monterey County General Plan Figure No. AWCP4 which shows the parcels in the Blanco Area which have been included in Williamson Act or Farmland Security Zone Contracts, many of which are less than 100 acres in size. Those parcels are listed in an enclosed attachment.

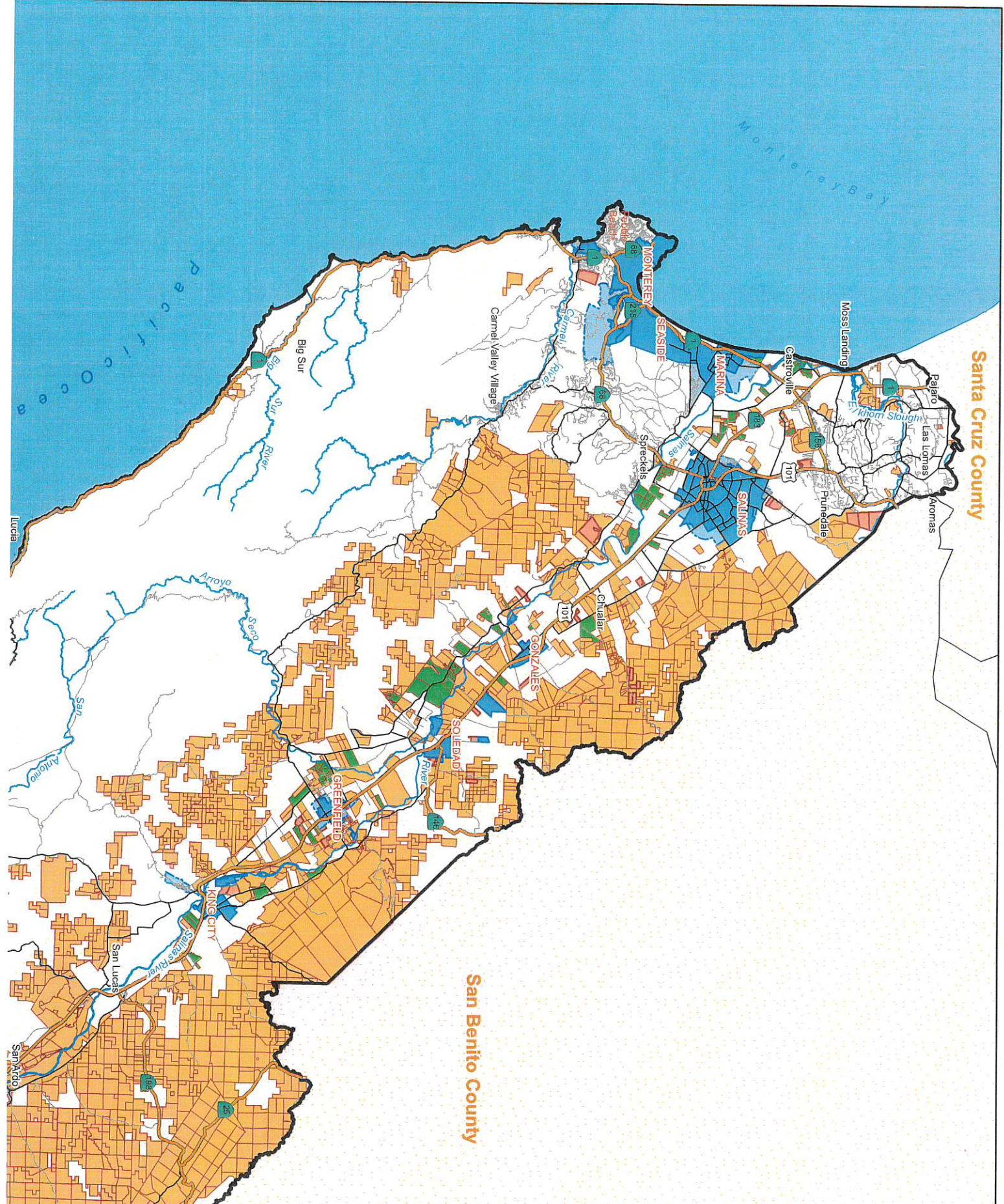
Accordingly, the unique character of the Blanco Area in terms of its value as productive farmland, its pattern of parcelization less than 100 acres, and the prior approval of Williamson Acts/Farmland Security Zones Contracts for other parcels of less than 100 acres in the area warrant approval for the Jensen parcel.

Very truly yours,

MDC/mmb

cc: Steve Jensen
Allan Jensen
Daryl Jensen

Santa Cruz County



San Benito County

Monterey Bay

Pacific Ocean

Lucia

San Antonio

San Lucas

San Antonio

San Antonio

San Antonio

San Antonio

San Antonio

San Antonio

San Antonio

San Antonio

San Antonio

San Antonio

San Antonio

San Antonio

San Antonio

San Antonio

San Antonio

San Antonio

San Antonio

San Antonio

San Antonio

San Antonio

San Antonio

San Antonio

San Antonio

San Antonio

San Antonio

San Antonio

San Antonio

San Antonio

San Antonio

San Antonio

San Antonio

San Antonio

San Antonio

San Antonio

San Antonio

San Antonio

San Antonio

San Antonio

San Antonio

San Antonio

San Antonio

San Antonio

San Antonio

San Antonio

San Antonio

San Antonio

San Antonio

San Antonio

San Antonio

San Antonio

San Antonio

San Antonio

San Antonio

San Antonio

San Antonio

San Antonio

San Antonio

San Antonio

San Antonio

San Antonio

San Antonio

San Antonio

San Antonio

San Antonio

San Antonio

San Antonio

San Antonio

San Antonio

San Antonio

San Antonio

San Antonio

San Antonio

San Antonio

San Antonio

San Antonio

San Antonio

San Antonio

San Antonio

San Antonio

San Antonio

San Antonio

San Antonio

San Antonio

San Antonio

San Antonio

San Antonio

San Antonio

San Antonio

San Antonio

San Antonio

San Antonio

San Antonio

San Antonio

San Antonio

San Antonio

San Antonio

San Antonio

San Antonio

San Antonio

San Antonio

San Antonio

San Antonio

San Antonio

San Antonio

San Antonio

San Antonio

San Antonio

San Antonio

San Antonio

San Antonio

San Antonio

San Antonio

San Antonio

San Antonio

San Antonio

San Antonio

San Antonio

San Antonio

San Antonio

San Antonio

San Antonio

San Antonio

San Antonio

San Antonio

San Antonio

San Antonio

San Antonio

San Antonio

San Antonio

San Antonio

San Antonio

San Antonio

San Antonio

San Antonio

San Antonio

San Antonio

San Antonio

San Antonio

San Antonio

San Antonio

San Antonio

San Antonio

San Antonio

San Antonio

San Antonio

San Antonio

San Antonio

San Antonio

San Antonio

San Antonio

San Antonio

San Antonio

San Antonio

San Antonio

San Antonio

San Antonio

San Antonio

San Antonio

San Antonio

San Antonio

San Antonio

San Antonio

San Antonio

San Antonio

San Antonio

San Antonio

San Antonio

San Antonio

San Antonio

San Antonio

San Antonio

San Antonio

San Antonio

San Antonio

San Antonio

San Antonio

San Antonio

San Antonio

San Antonio

San Antonio

San Antonio

San Antonio

San Antonio

San Antonio

San Antonio

San Antonio

San Antonio

San Antonio

San Antonio

San Antonio

San Antonio

San Antonio

San Antonio

San Antonio

San Antonio

San Antonio

San Antonio

San Antonio

San Antonio

San Antonio

San Antonio

San Antonio

San Antonio

| Assessor Parcel No. | FSZ No. | Acreage |
|---------------------|----------|---------|
| 147-011-017 | 09-008 | 94.8 |
| 147-011-029 | 09-008 | |
| 414-041-005 | 2007-006 | 55.40 |
| 414-012-001 | 05-008 | 92.87 |
| 414-012-005 | 00-013 | 29.46 |
| 414-013-006 | 00-013 | 24.34 |
| 414-013-007 | 00-013 | |
| 414-013-026 | 00-013 | 85.23 |
| 414-013-027 | 00-013 | |
| 414-013-028 | 00-013 | |
| 414-013-029 | 00-013 | |
| 414-013-009 | | 95.23 |

SCALE: 10 chs. = 1 in.



**PARCELS LESS THAN
 100 ACRES**

SUBJECT PROPERTY



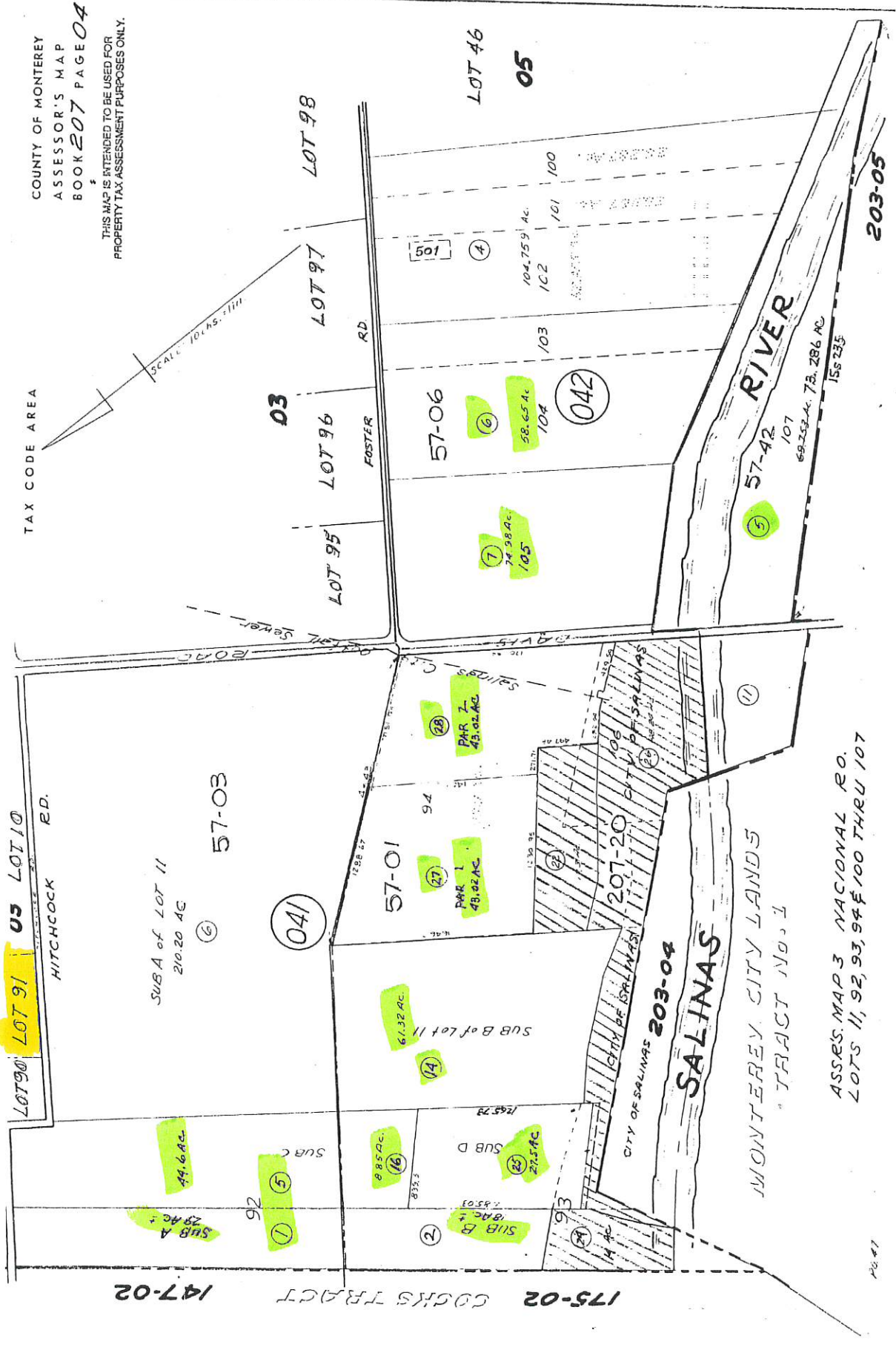
ASSR'S MAP 1 NACIONAL RO.
LOTS 6 7 & 25

**PARCELS LESS THAN
100 ACRES**

SUBJECT PROPERTY

THIS MAP IS INTENDED TO BE USED FOR
 PROPERTY TAX ASSESSMENT PURPOSES ONLY.

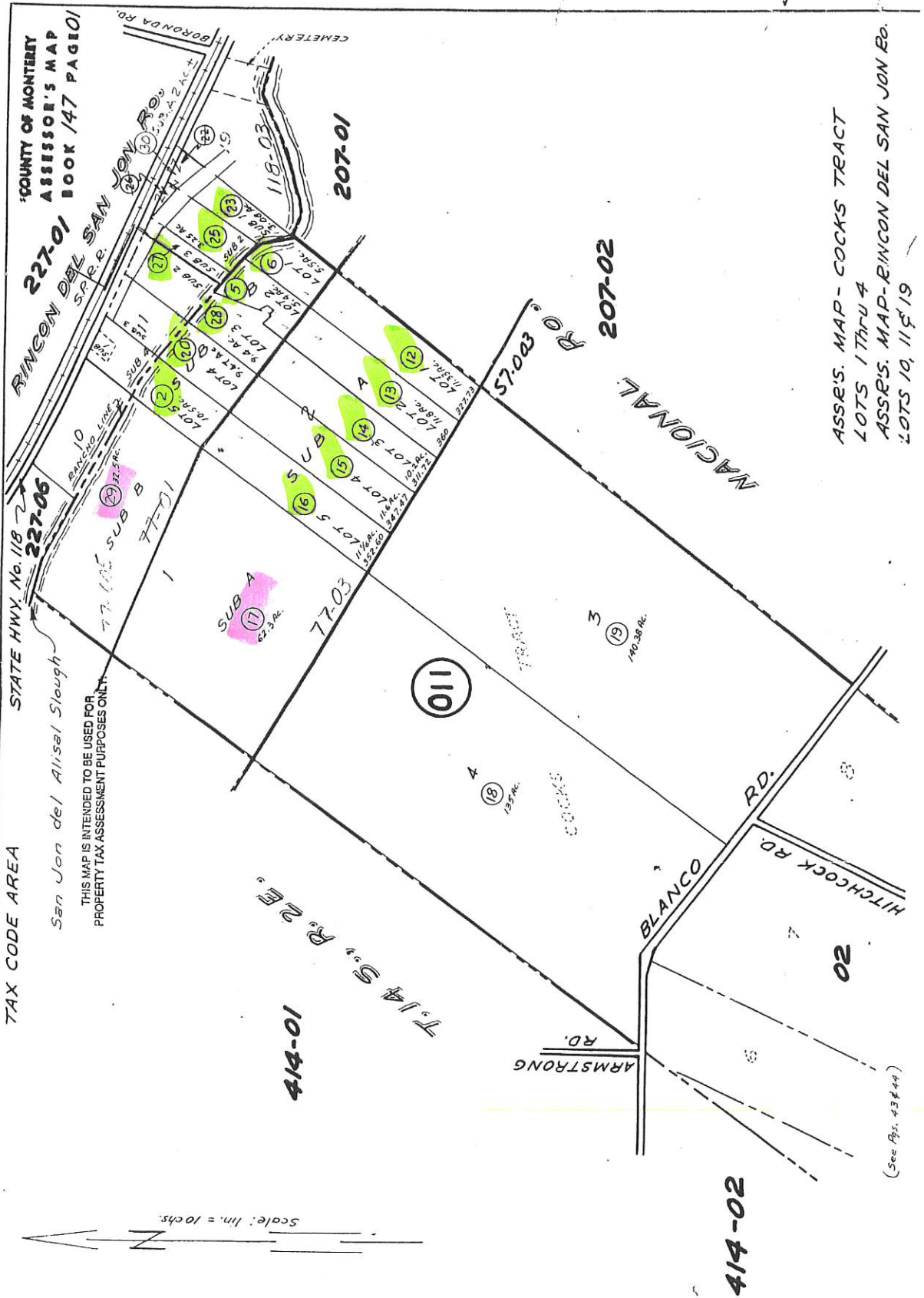
TAX CODE AREA



SUBJECT PROPERTY

**PARCELS LESS THAN
 100 ACRES**

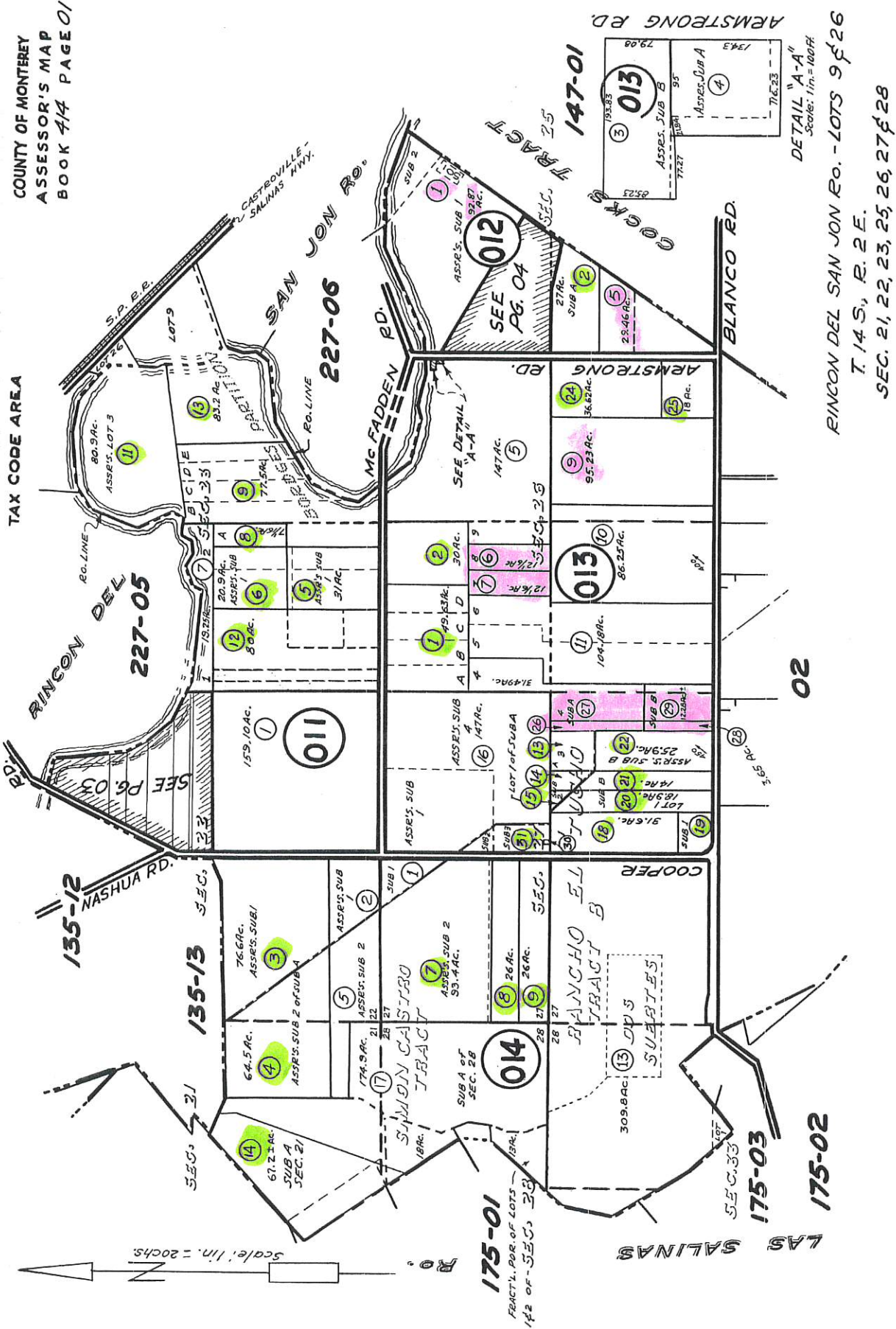
ASSES MAP 3 NACIONAL RO.
 LOTS 11, 92, 93, 94 & 100 THRU 107



FSZ PARCELS LESS THAN 100 ACRES

PARCELS LESS THAN 100 ACRES

TAX CODE AREA



**PARCELS LESS THAN
 100 ACRES**

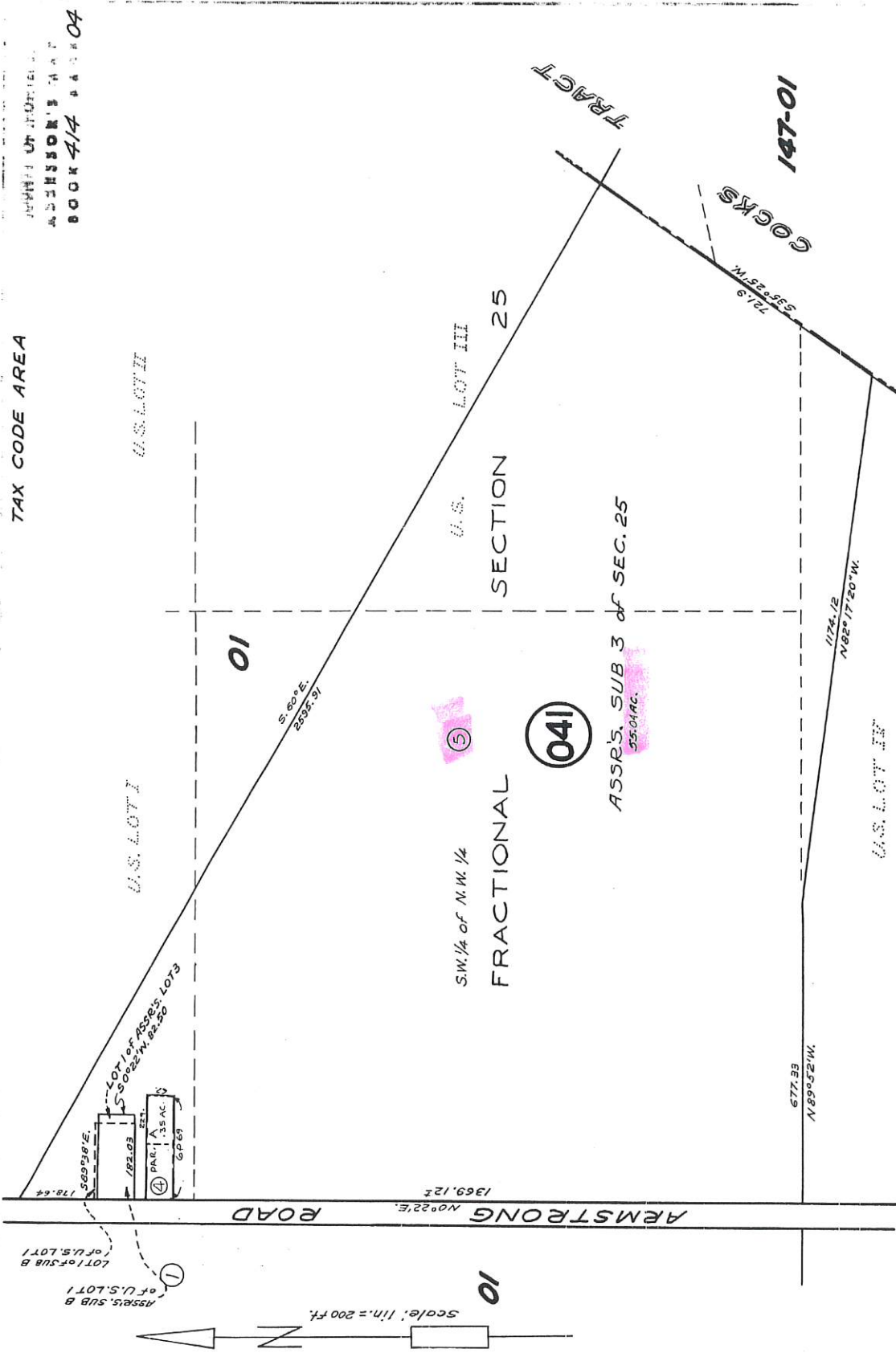
**PARCELS LESS THAN
 100 ACRES**

RINCON DEL SAN JON Ro. - LOTS 9 & 26
 T. 14 S., R. 2 E.
 SEC. 21, 22, 23, 25, 26, 27 & 28

DETAIL "A-A"
 Scale: 1 in. = 100 ft.

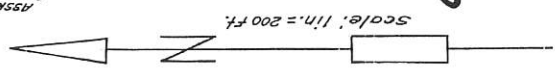
TAX CODE AREA

SECTION 147 OF THE
REVISIONS TO THE
BOOK 414 PAGE 04



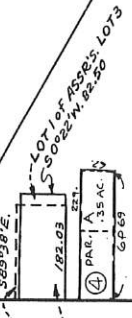
T. 14 S., R. 2 E.
PORTION of SEC. 25

**FSZ PARCELS LESS THAN
100 ACRES**



Assr's. SUB B
of U.S. LOT I

LOT I of SUB B
of U.S. LOT I



This page intentionally left blank