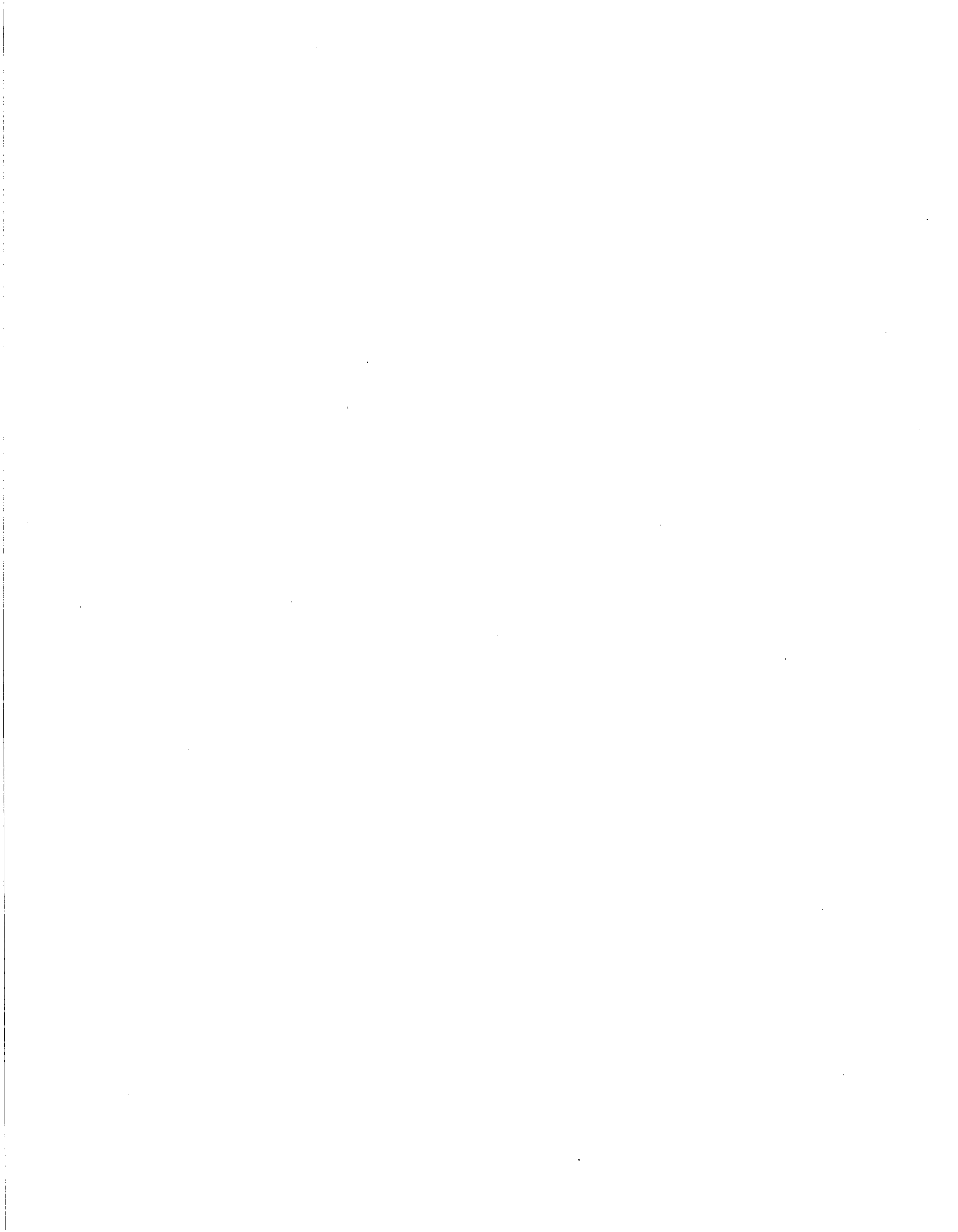
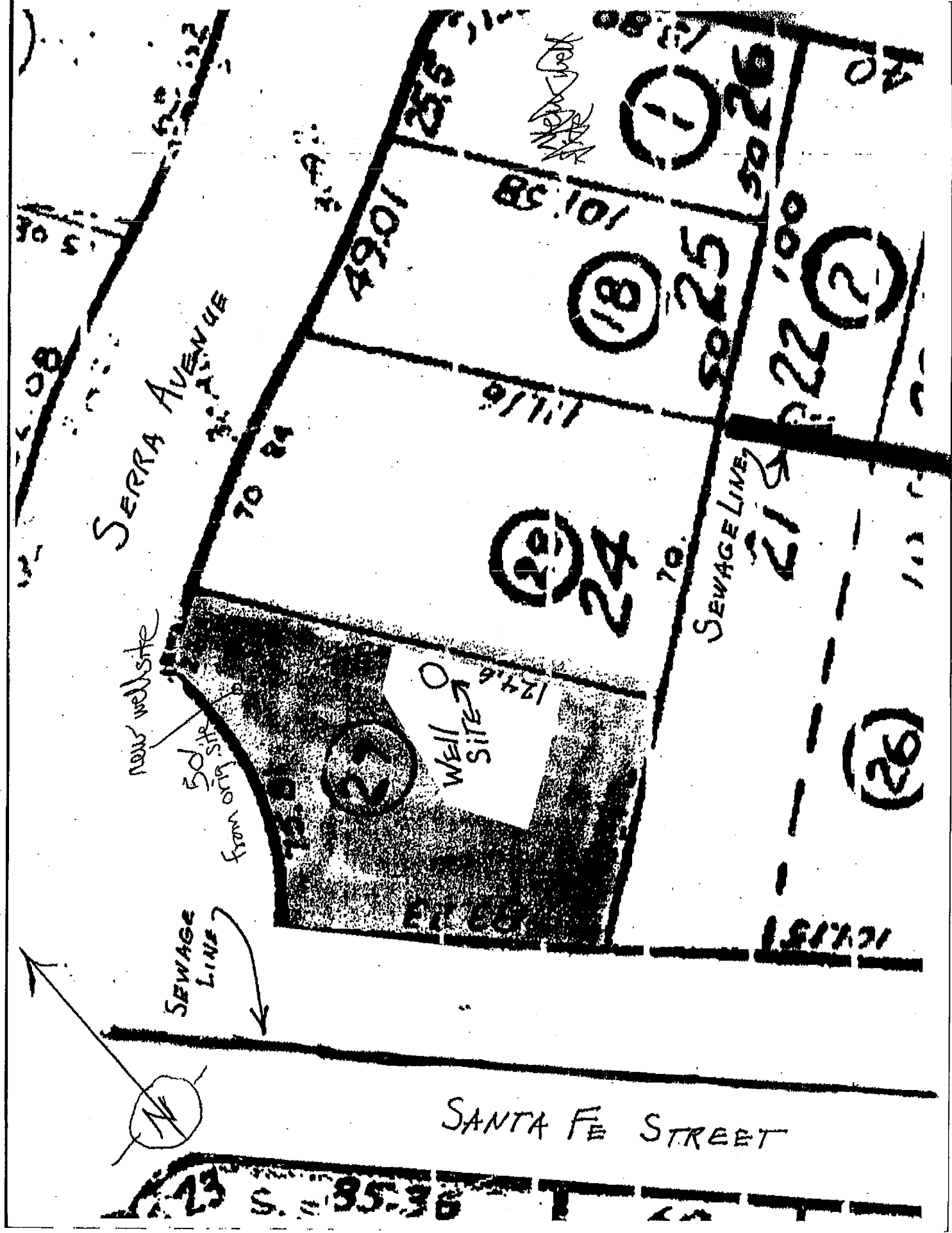


Attachment L
Well location maps from
Environmental Health Bureau

PLN110366/PLN110367
Mozingo (Powell)





SERRA AVENUE

SANTA FE STREET

new well site

50 ft from out site

SEWAGE LINE

WELL SITE

SEWAGE LINE

49.01

85.101

50.25

22.00

111.11

70.84

70.

21.8

50.08

Handwritten signature



23 S. = 35.36

3.9

(26)

(18)

(1)

(2)

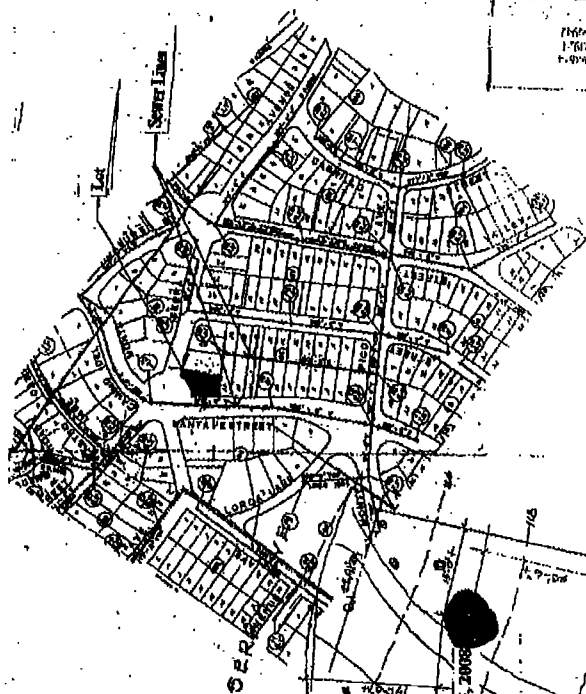
(24)

(20)

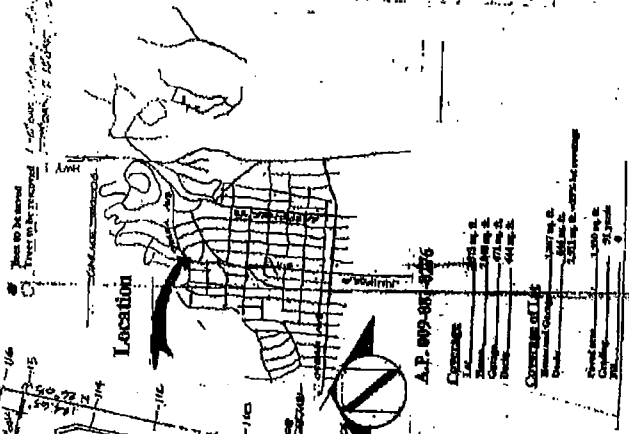
50.26

14

151.01



23 Low Drive, Carmel Valley, CA 93924
 Phone 831-653-1877
 A.P. 009-081-0276



New Test Well Site Proposed July 25, 2006

Proposed OH test well site approved June 13, 2006

SANTA TR

Water filter tank
 Call this to get tank
 Sewer tanks to transformer electrical lines
 Electrical made to pole

Excavation completed by crew degradable material by North American Cement, placed in all new cast-in-place. All depths 100% of fill.

A.P. 009-081-0276

CONCRETE OF L.L.E.	
1st floor	1.000 cu yd
2nd floor	1.000 cu yd
3rd floor	1.000 cu yd
4th floor	1.000 cu yd
5th floor	1.000 cu yd
6th floor	1.000 cu yd
7th floor	1.000 cu yd
8th floor	1.000 cu yd
9th floor	1.000 cu yd
10th floor	1.000 cu yd
11th floor	1.000 cu yd
12th floor	1.000 cu yd
13th floor	1.000 cu yd
14th floor	1.000 cu yd
15th floor	1.000 cu yd
16th floor	1.000 cu yd
17th floor	1.000 cu yd
18th floor	1.000 cu yd
19th floor	1.000 cu yd
20th floor	1.000 cu yd
21st floor	1.000 cu yd
22nd floor	1.000 cu yd
23rd floor	1.000 cu yd
24th floor	1.000 cu yd
25th floor	1.000 cu yd
26th floor	1.000 cu yd
27th floor	1.000 cu yd
28th floor	1.000 cu yd
29th floor	1.000 cu yd
30th floor	1.000 cu yd

LOT NUMBERED BY PLCKER NUNN TEST
 RECORD NO. 17872 PAGE 20