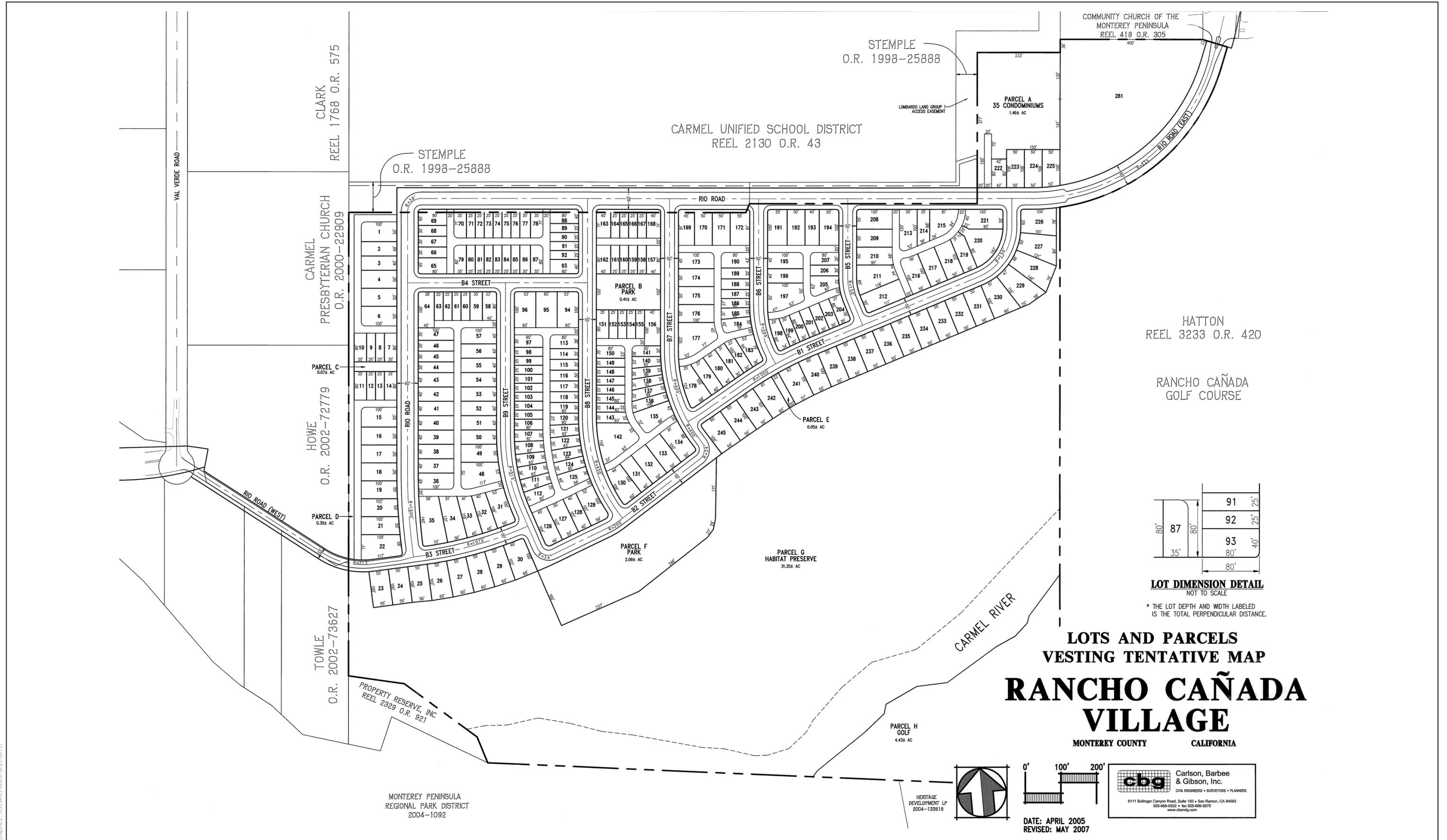
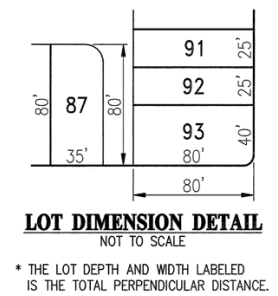


Attachment C

This page intentionally left blank.



LOTS AND PARCELS
 VESTING TENTATIVE MAP
**RANCHO CAÑADA
 VILLAGE**
 MONTEREY COUNTY CALIFORNIA



HERITAGE DEVELOPMENT LP
 2004-1139116

0' 100' 200'

cbg Carlson, Barbee & Gibson, Inc.
 CIVIL ENGINEERS • SURVEYORS • PLANNERS
 6111 Bollinger Canyon Road, Suite 150 • San Ramon, CA 94583
 925-966-0322 • Fax 925-966-6575
 www.cbng.com

DATE: APRIL 2005
 REVISED: MAY 2007

Graphics...033.34.05 RDBER (6-25-2015)



Figure 2-4
 Proposed Project Lots and Parcels

This page intentionally left blank