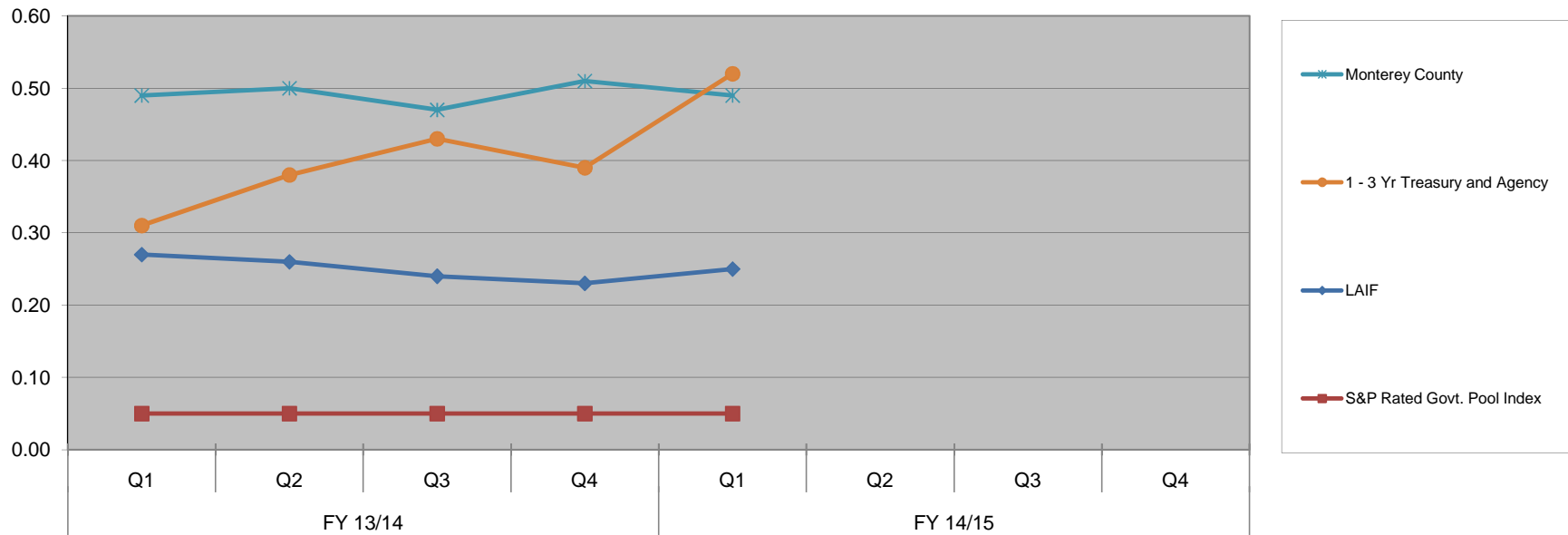


Exhibit C Monterey County Historical Yields vs. Benchmarks



Quarterly Yield	FY 13/14				FY 14/15			
	Q1	Q2	Q3	Q4	Q1	Q2	Q3	Q4
Monterey County	0.49	0.50	0.47	0.51	0.49			
1 - 3 Yr Treasury and Agency	0.31	0.38	0.43	0.39	0.52			
LAIF	0.27	0.26	0.24	0.23	0.25			
S&P Rated Govt. Pool Index	0.05	0.05	0.05	0.05	0.05			

The S&P Index yields are obtained from Bloomberg

The 1-3 Yr Treas and Agy yields are obtained from the B of A Merrill Lynch Global Bond Indices/Bloomberg