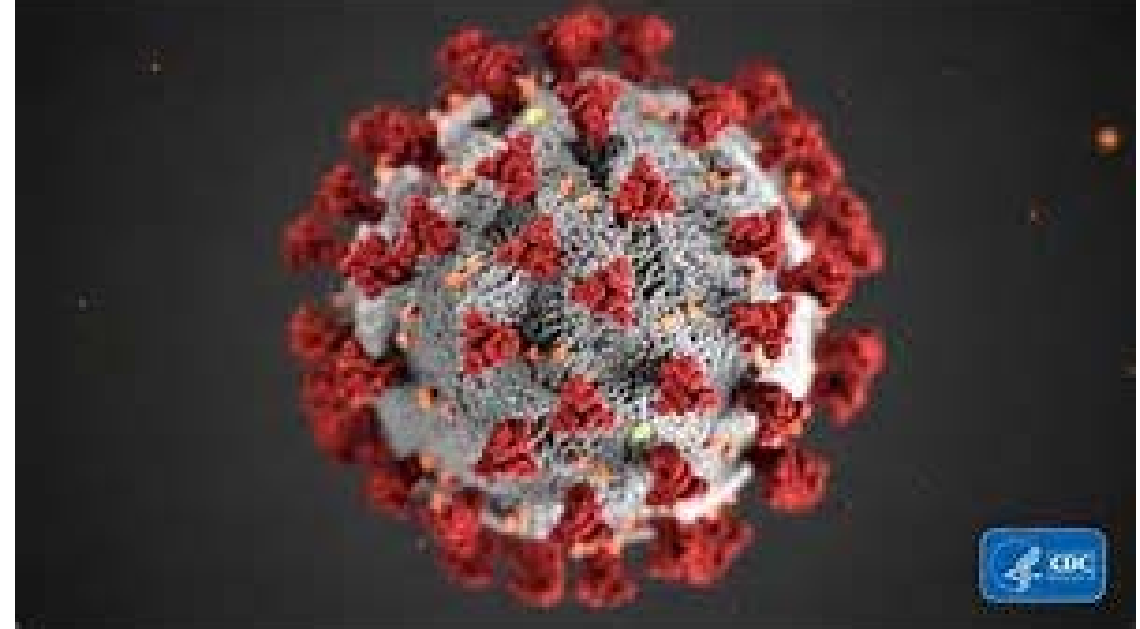


COVID-19 Update



Monterey County Health Department, Public Health Bureau

Edward Moreno, MD, MPH, Health Officer & Director of Public Health

March 9, 2021



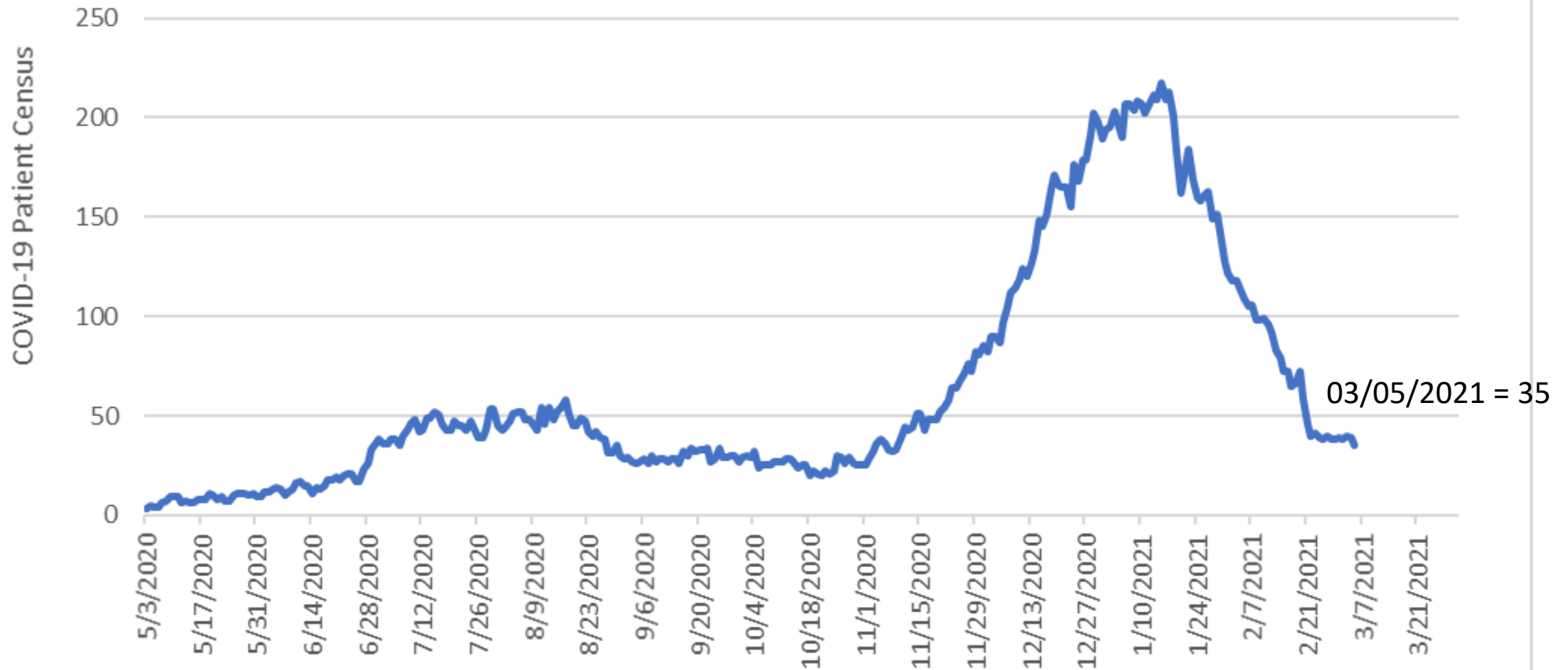
COVID-19 Data and Metrics



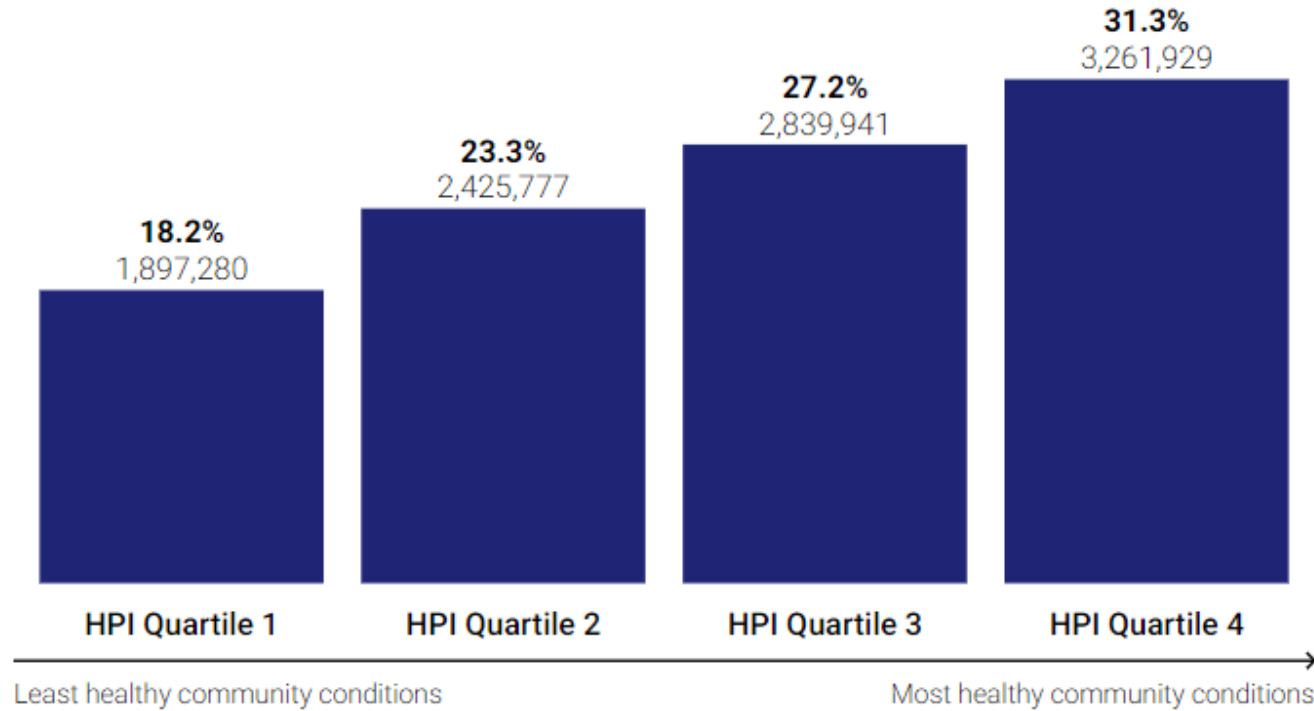
Monterey County Rolling 7-Day Daily COVID-19 Case Rate per 100,000 Residents as of March 5, 2021



Monterey County Hospitalization Census: Confirmed COVID-19 Patients as of March 5, 2021



■ % of total and number of doses administered



Doses Administered by HPI Quartile Statewide

Updated March 9, 2021 with data from March 8, 2021. Excludes doses without an HPI score, including out-of-state residents or records with missing zip codes. Percentage for doses calculated as doses administered in a quartile divided by total doses administered statewide.



California Vaccine Equity Metric

Purple (Widespread) tier Adjusted Case Rate range will shift from greater than 7 cases per 100,000 to greater than 10 cases per 100,000; and Red (Substantial) tier Adjusted Case Rate range will be widened to 4-10 cases per 100,000 when:

- 2 million doses have been administered to persons living in the Vaccine Equity Quartile. (assessed statewide).

Orange (Moderate) and Yellow (Minimal) tier ranges will remain the same.

Test Positivity Metric and Health Equity Metric remain unchanged



Monterey County ZIP Codes Prioritized by California for Vaccine Equity Metric

- | | | | |
|---------|------------|---------|--------------|
| ➤ 93450 | San Ardo | ➤ 93932 | Lockwood |
| ➤ 93905 | Salinas | ➤ 93954 | San Lucas |
| ➤ 93926 | Gonzales | ➤ 93960 | Soledad |
| ➤ 93927 | Greenfield | ➤ 95039 | Moss Landing |
| ➤ 93930 | King City | | |

California Vaccine Equity Metric and Goals

Doses Administered in the Vaccine Equity Quartile (statewide)	Tier 1 (Widespread)	Tier 2 (Substantial)	Tier 3 (Moderate)	Tier 4 (Minimal)
Current: Less than 2 Million Doses Administered	>7	4 to 7	1 to 3.9	<1
Goal #1: 2 Million Doses Administered	>10	4 to 10	1 to 3.9	<1
Goal #2: 4 Million Doses Administered	>10	6 to 10	2 to 5.9	<2

Test Positivity Metric and Health Equity Metric are unchanged.



Modified Blueprint Metric Tier Status

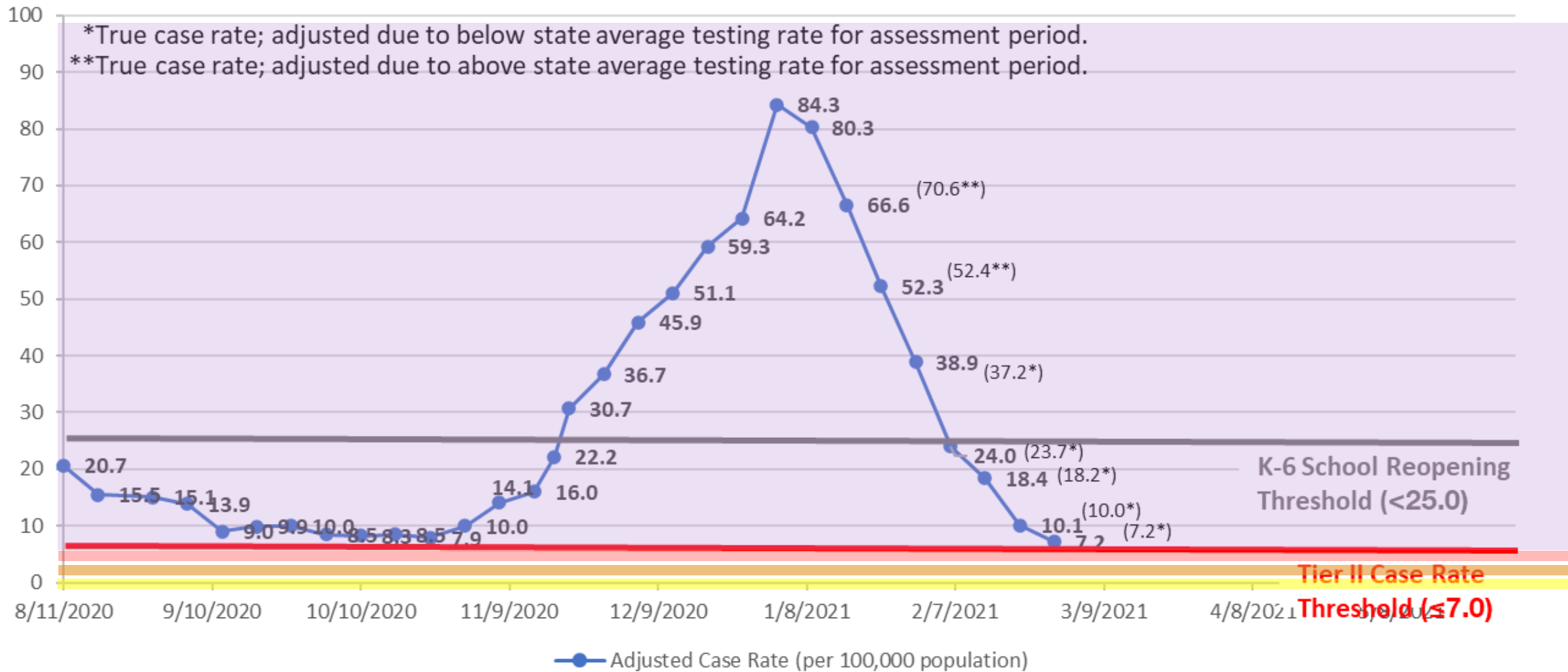
Monterey County Blueprint Metrics as of February 27 - assessment period	Tier 1 (Widespread)	Tier 2 (Substantial)	Tier 3 (Moderate)	Tier 4 (Minimal)
Adjusted Case Rate: 7.2	Baseline: >7 Goal #1: >10 Goal #2: >10	Baseline: 4 to 7 Goal #1: 4 to 10 Goal #2: 6 to 10	Baseline: 1 to 3.9 Goal #1: 1 to 3.9 Goal #2: 2 to 5.9	Baseline: <1 Goal #1: <1 Goal #2: <2
Test Positivity Rate: 3.1%	>8%	5% to 8%	2% to 4.9%	<2%
HPI Lowest Quartile Test Positivity Rate: 5.1%	>8.0%	≤8.0%	<5%	<2%



CDPH Blueprint for a Safer Economy Metrics

Monterey County Adjusted Case Rate

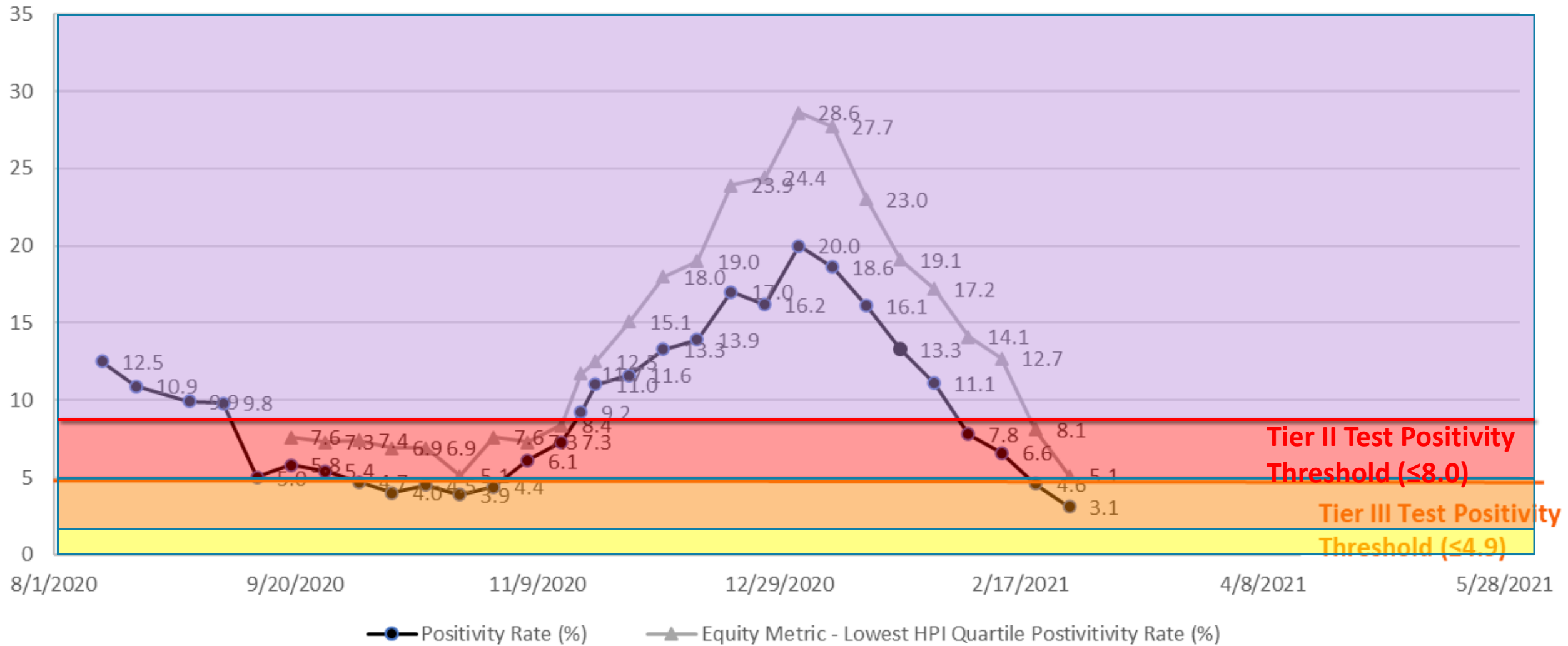
as of Assessment Period ending February 27, 2021



CDPH Blueprint for a Safer Economy Metrics

Monterey County Test Positivity Rate and Equity Measure

as of Assessment Period ending February 27, 2021



Testing



Benefits of Testing

Testing is still an important strategy to reduce transmission of COVID19 in Monterey County

Reducing transmission leads to fewer cases, fewer hospitalizations and fewer deaths.



Who Should be Tested

People with symptoms of COVID-19, including people that have had COVID-19 and people who have been vaccinated.

- People who are infectious are identified and isolate from others to reduce the spread of COVID-19

People who have had close contact with someone with COVID-19

- People who are exposed to COVID-19 and in quarantine can know if they have developed COVID-19 and can then isolate appropriately

People who cannot work from home and must engage the public

- Regular screening can identify people who have developed COVID-19 and can then remove themselves from the worksite and prevent further spread of COVID-19 in the worksite.

People who have been advised by their health care provider to get tested.



Optum Testing Utilization: Fixed Sites

Week Ending	Salinas (825/wk)	Seaside (825/wk)	Castroville (825/wk)	Soledad (1,650/wk)
January 30	711	700	471	420
February 6	656	637	285	348
February 13	563	601	240	251
February 20	461	460	119	206
February 27	430	460	107	196
March 6	378	413	102	149

Walk-up maximum weekly capacity at 165/day.
 Drive-up maximum weekly capacity at 330/day.



Optum Testing Utilization: Traveling Team

Week Ending	Alisal High	Gonzales USD	Laurel Wood Elementary	Lincoln Elementary
March 6	0	9	10	10

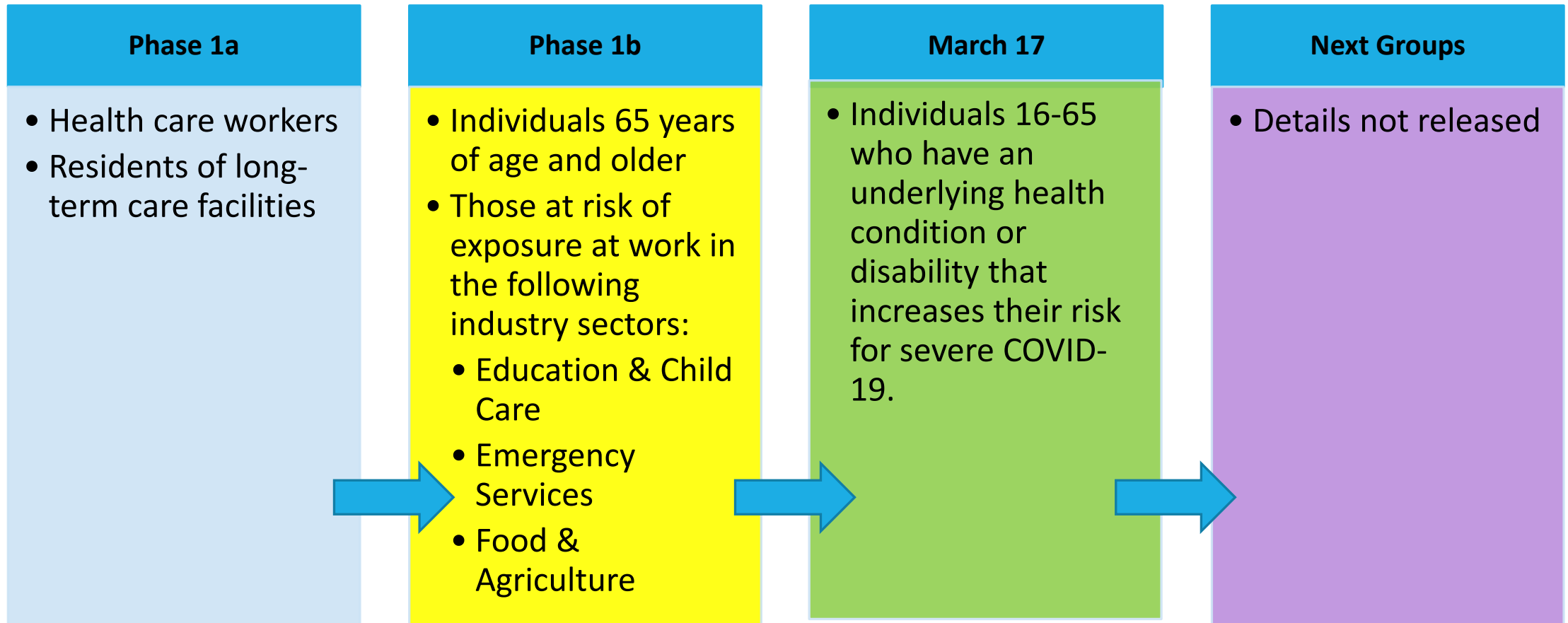
Maximum capacity is 105/day for one lane and 210/day for two lanes.



California COVID-19 Vaccination Plan



California's Revised COVID-19 Vaccine Plan; Balancing Risk of Severe Illness and Protecting Essential Workforce



Local and State Vaccination Planning and Implementation



Hospital Vaccine Clinics

Community Hospital of the Monterey Peninsula

Salinas Valley Memorial Hospital

Natividad Medical Center

Mee Memorial Hospital

- To find vaccine clinic availability and schedule an appointment visit the hospitals' websites or go to www.mtyhd.org/covidvaccine



Health Care Provider Vaccine Clinics

Acacia Family Medical, Salinas

Big Sur Health Center

Clinica de Salud de Valle Salinas

- 2180 N Main St, Salinas
- 219 N Sanborn Rd, Salinas
- 950 Circle Dr, Salinas
- 10561 Merritt St, Castroville

County Clinic Services

- Laurel Family Practice
- Laurel Pediatric Clinic
- Seaside Family Health Center
- Alisal Health Clinic

Davita Dialysis

Doctors on Duty

- 501 Lighthouse Ave, Monterey
- 3130 Del Monte Blvd, Marina
- 1513 Fremont Blvd, Seaside
- 1212 S Main St, Salinas
- Harden Urgent Care, Salinas
- Salinas Urgent Care

Mee Memorial

- Greenfield Clinic
- King City Clinic

CHOMP

- Montage Health Marina Wellness
- Montage Medical Group

Monterey Peninsula Pediatric

Pebble Beach Health and Wellness

SVMH

- Prime Care Medical Group
- Salinas Valley Medical Clinic
- Taylor Farms Health and Wellness

Soledad Medical Clinic

United Ag Health and Wellness, Salinas

US Renal Dialysis

VA/DOD Clinic in Marina

Valle Verde Medical Group

Pharmacies

CVS

- 268 Reservation Rd, Marina
- 133 General Stilwell Dr, Marina
- 2170 N Fremont, Monterey
- 17579 Vierra Canyon Rd, Prunedale
- 662 E Boranda Rd, Salinas
- 1640 n main St, Salinas
- 2040 California Ave, Sand City

Safeway

- 1516 Constitution, Salinas
- 1546 N Main St., Salinas
- 815 Canyon Del Rey Blvd, Del Rey Oaks
- 1212 Forest Ave, Pacific Grove
- 104 Mid Valley Center, Carmel

RiteAid

- 650 Walnut Ave, Greenfield
- 540 Canal St, King City
- 1301 Munras Ave, Monterey
- 499 Alvarado St, Monterey
- 160 Country Club Gate Center, Pacific Grove
- 602 Williams Rd, Salinas

Other

- Alisal Pharmacy, Salinas
- Pharmaca Integrated Pharmacy, Monterey

Third Party Administrator

Provider Network Requirements

- Use MyTurn by end of March 2021 to receive vaccine distributions
- Sign provider/TPA contract
- Use their own electronic health records to schedule appointments but must still enter data into MyTurn.

Monterey County is reviewing the TPA contract



Vaccine Data Reporting



Disposition of Monterey County Public Health Vaccines	Vaccines Allocated, Including Doses Received and on Order	Vaccines Re-allocated	Reserved for Scheduled Clinics	Vaccine Ordered but Not Received	Recorded as Administered in State CAIR2 to Monterey County Residents*	Reported by Agency as Administered (includes non-county resident)	MCPH Vaccine Available
MCHD PH	21,735				9,444	10,748	
Big Sur Health Center (reallocated)		10					
California Forensic MG (reallocated)		1,000					
CHOMP/Montage (reallocated)		1,770					
Clinica de Salud (reallocated)		733					
Mee Memorial (reallocated)		320					
Monterey Fire (reallocated)		729					
Monterey Peninsula Ped (reallocated)		315					
Natividad (reallocated)		1,400					
US Renal (reallocated)		40					
Total	21,735	-6,317	-1,496	-2,470		-10,748	704 (3%)

Vaccine Providers Within Monterey County Receiving Vaccine Distributions and Redistributions	Vaccines Allocated, Including Doses Received and on Order (doses redistributed)	Vaccine Doses Recorded as Administered in CAIR2 to Monterey County Residents	Vaccine Doses Reported as Administered by Vaccine Provider (includes non-county residents)	Estimated Vaccine Doses Administered *
Acacia Family Medical	100	95	86	95
Big Sur Health Center	700 (+10)	369	342	369
California Forensic MG	500 (+1,000)	0		0
Central Coast VNA and Hospice	5,100	1,920	2,000	2,000
Clinica de Salud (only local doses)	3,000 (+733)	2,268		2,268
CHOMP	20,175 (+1,770)	13,709		
Montage Medical Group		120	23,604	23,604
Montage Health Marina Wellness		4,558		
<i>Davita</i>	200	3		3
Doctors on Duty/Salinas Urgent Care	2,500	701	1,260	1,260
Elite Corporate Medical Services	900	122	308	308
<i>Haller's Pharmacy (Alisal Pharmacy)</i>	100	2		2

*Greater of CAIR and Entity reported administered doses



Vaccine Providers Within Monterey County Receiving Vaccine Distributions and Redistributions	Vaccine Doses Allocated, Including Doses Received and on Order (doses redistributed)	Vaccine Doses Recorded as Administered in CAIR2 to Monterey County Residents	Vaccine Doses Reported as Administered by Vaccine Providers (includes non-county residents)	Estimated Vaccine Doses Administered*
Mee Memorial	7,740 (+320)	3,557	2,661	3,917
Greenfield Clinic		20		
King City Clinic		340		
Monterey County Clinic Services	3,000	2,029	2,009	2,029
Monterey County Public Health	21,735 (-6,317)	9,444	10,748	10,748
Monterey Fire Department	1,100 (+729)	865		865
Monterey Peninsula Pediatric	100 (+315)	296		296
Natividad	17,255 (+1,400)	14,716	16,166	16,166
Pebble Beach Health & Wellness	500	31	314	314
<i>Pharmaca Integrated Pharmacy</i>	100	1		1
Safeway	2,900	565		565

*Greater of CAIR and Entity reported administered doses



Vaccine Providers Within Monterey County Receiving Vaccine Distributions and Redistributions	Vaccines Allocated, Including Doses Received and on Order (doses redistributed)	Vaccine Doses Recorded as Administered in CAIR2 to Monterey County Residents	Vaccine Doses Reported as Administered by Vaccine Provider (includes non-county residents)	Estimated Vaccine Doses Administered*
Salinas Valley Memorial	19,475	9,624	14,163	14,163
Prime Care Medical Group		3,163		
Salinas Valley Medical Clinic		70		
Taylor Farms Health & Wellness		395		
Soledad Medical Clinic	2,200	602	893	893
<i>US Renal</i>	100 (+40)	30		30
Valle Verde Medical Group	200	25	30	30
Unknown		31		31
Total of Ordered	109,680	69,640		79,957
Total Received	92,460			86% (79,957/92,460)
Providers Outside Monterey County		13,025		
Pharmacies (Lucky, RiteAid, Walgreens)		10,613		

*Greater of CAIR and Entity reported administered doses



Vaccinated Residents by Race/Ethnicity

Racial and Ethnic Group	Number of Residents Receiving at Least 1 Dose of COVID-19 Vaccine	Proportion of Monterey County Population*	Proportion of Monterey County COVID-19 Cases
American Indian or Alaska Native, Not Hispanic or Latino	274 (1%)	<1%	2%
Other Race, Not Hispanic or Latino	2,969 (6%)	2%	
Asian, Not Hispanic or Latino	4,577 (9%)	6%	3%
Native Hawaiian or Pacific Islander, Not Hispanic or Latino	457 (1%)	<1%	
Black or African American, Not Hispanic or Latino	961 (2%)	3%	1%
Hispanic or Latino, Any Race	19,092 (36%)	56%	86%
White, Not Hispanic or Latino	23,985 (46%)	32%	8%
Unknown	6,163	-	-
Total	58,478 (18% of population 18 years and older)	100% of 334,074	100% of cases with known race and ethnicity

*Population eligible for vaccination



Racial and Ethnic Group	Number of Residents 16-64 Years Receiving at Least 1 Dose	Proportion of residents 16-64 Years	Number of Residents 65-74 Years Receiving at Least 1 Dose	Proportion of Residents 65-74 Years	Number of Residents 75+ Years Receiving at Least 1 Dose	Proportion of Residents 75+ Years
American Indian or Alaska Native, Not Hispanic or Latino	121 (1%)	<1%	82 (1%)	<1%	71 (<1%)	1%
Asian, Not Hispanic or Latino	1,983 (9%)	5%	1,285 (9%)	8%	1,309 (9%)	10%
Black or African American, Not Hispanic or Latino	502 (2%)	3%	254 (2%)	2%	205 (1%)	3%
Hispanic or Latino, Any Race	10,955 (49%)	63%	4,844 (32%)	30%	3,293 (22%)	24%
Native Hawaiian or Pacific Islander, Not Hispanic or Latino	283 (1%)	<1%	102 (1%)	<1%	72 (0%)	1%
Other Race, Not Hispanic or Latino	1,674 (7%)	2%	518 (3%)	2%	777 (5%)	2%
White, Not Hispanic or Latino	7,048 (31%)	26%	8,002 (53%)	57%	8,934 (61%)	61%
Unknown	2,542	-	16,834	-	1,874	-
Total	25,108 (9% of age group)	100% of 270,732	16,834 (45% of age group)	100% of 37,594	16,535 (64% of age group)	100% of 25,748

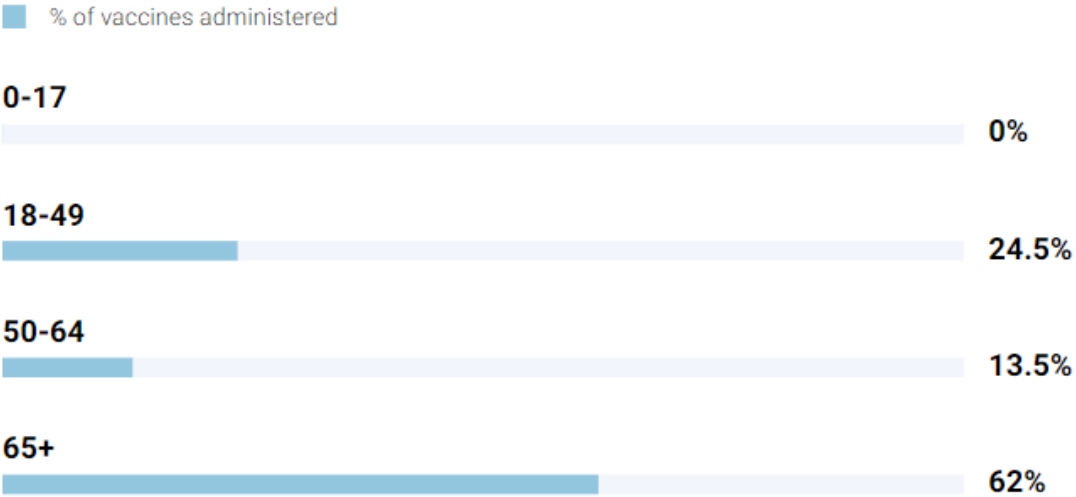
Vaccinated Residents by Age Group

Age Group in Years	Number of Residents Receiving at Least 1 Dose of COVID-19 Vaccine	Proportion of Monterey County Population	Proportion of Monterey County COVID-19 Cases	Proportion of Monterey County COVID-19 Fatalities
0 to 17	44 (<1%)	25%	13%	2%
18 to 24	1,910 (3%)	9%	14%	
25 to 34	5,600 (10%)	16%	20%	
35 to 44	5,786 (10%)	14%	19%	3%
45 to 54	5,822 (10%)	11%	16%	10%
55 to 64	5,955 (10%)	11%	11%	18%
65 to 74	16,834 (29%)	8%	5%	21%
75+	16,535 (29%)	6%	3%	47%
Unknown	1	6%	3%	47%
Total	58,478	100%	100%	100%

Progress Vaccinating 65 Years of Age and Older

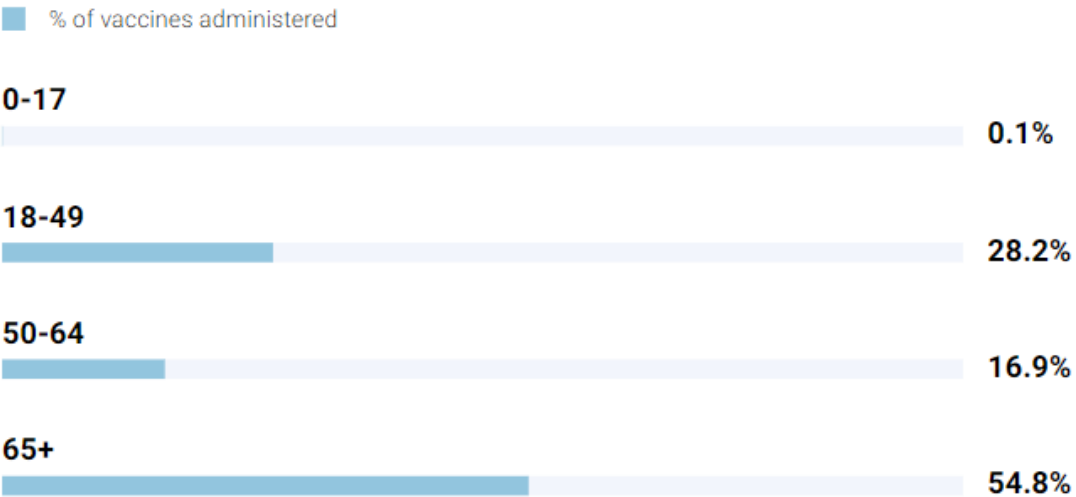
MONTEREY COUNTY

People with at least one dose of vaccine administered by age in Monterey County



STATEWIDE

People with at least one dose of vaccine administered by age in California



Vaccinated Residents by ZIP Code of Residence

North County	Number of Residents 16+ Years Receiving at Least 1 Dose of COVID-19 Vaccine	Proportion of Monterey County Population (15+ Years)	Proportion of Monterey County COVID-19 Cases
93907	3,230 (6%)	5%	4%
95004	695 (1%)	<1%	<1%
95012	1,170 (2%)	2%	3%
95039	235 (<1%)	<1%	<1%
95076	10 (<1%)	4%	3%



Vaccinated Residents by ZIP Code of Residence

Peninsula & Big Sur	Number of Residents 16+ Years Receiving at Least 1 Dose of COVID-19 Vaccine	Proportion of Monterey County Population (15+ Years)	Proportion of Monterey County COVID-19 Cases
93920	208 (<1%)	<1%	<1%
93921	1,030 (2%)	1%	<1%
93923	3,563 (6%)	3%	<1%
93924	1,403 (2%)	2%	<1%
93933	3,940 (7%)	6%	3%
93940	5,978 (10%)	8%	2%
93950	3,356 (6%)	4%	1%
93953	1,296 (2%)	1%	<1%
93955	3,683 (6%)	8%	6%



Vaccinated Residents by ZIP Code of Residence

Salinas	Number of Residents 16+ Years Receiving at Least 1 Dose of COVID-19 Vaccine	Proportion of Monterey County Population (15+ Years)	Proportion of Monterey County COVID-19 Cases
93901	5,040 (9%)	7%	6%
93905	5,210 (9%)	13%	21%
93906	7,770 (13%)	14%	17%
93908	3,006 (5%)	3%	1%
93962	127 (<1%)	<1%	<1%



Vaccinated Residents by ZIP Code of Residence

South County	Number of Residents 16+ Years Receiving at Least 1 Dose of COVID-19 Vaccine	Proportion of Monterey County Population (15+ Years)	Proportion of Monterey County COVID-19 Cases
93426	95 (<1%)	<1%	<1%
93450	43 (<1%)	<1%	<1%
93925	157 (<1%)	<1%	<1%
93926	983 (2%)	2%	3%
93927	1,553 (3%)	4%	6%
93930	1,459 (3%)	4%	5%
93954	23 (<1%)	<1%	0%
93960	2,133 (4%)	7%	14%



Vaccinated Residents by Region of Residence

Region of Residence	Number of Residents 16+ Years Receiving at Least 1 Dose of COVID-19 Vaccine	Proportion of Monterey County Population (15+ Years)	Proportion of Monterey County COVID-19 Cases
North County	5,460 (9%)	12%	11%
Peninsula & Big Sur	25,035 (43%)	33%	13%
Salinas	21,411 (37%)	37%	46%
South County	6,516 (11%)	18%	30%
Unknown Address	56	-	-
Total	58,478	100%	100% of cases with reported address information



Questions

