



**Pacific Gas and
Electric Company®**

U 39

San Francisco, California

	Revised	Cal. P.U.C. Sheet No.	56296-E
Cancelling	Revised	Cal. P.U.C. Sheet No.	55837-E

Electric Sample Form No. 79-1220-02 Sheet 1
Interconnection Agreement for Net Energy Metering 2 (NEM2) of a Renewable Electric Generating
Facility of 1,000 kW or Less, Except NEM2 Solar or Wind Facilities of 30 kW or Less,
and Virtual Net Energy Metering (NEM2V) of a Renewable Electric Generating Facility of 1,000 kW or
Less

**Please Refer to Attached
Sample Form**

(Continued)

<i>Advice</i>	6976-E	<i>Issued by</i>	<i>Submitted</i>	June 30, 2023
<i>Decision</i>		Meredith Allen	<i>Effective</i>	June 30, 2023
		<i>Vice President, Regulatory Affairs</i>	<i>Resolution</i>	



Pacific Gas and
Electric Company®

INTERCONNECTION AGREEMENT FOR NET ENERGY METERING 2 (NEM2) OF A RENEWABLE ELECTRIC GENERATING FACILITY OF 1,000 KW OR LESS, EXCEPT NEM2 SOLAR OR WIND FACILITIES OF 30 KW OR LESS, AND VIRTUAL NET ENERGY METERING (NEM2V) OF A RENEWABLE ELECTRIC GENERATING FACILITY OF 1,000 KW OR LESS

This INTERCONNECTION AGREEMENT FOR NET ENERGY METERING 2 (NEM) OF A RENEWABLE ELECTRIC GENERATING FACILITY OF 1,000 KW OR LESS, EXCEPT NEM2 SOLAR OR WIND FACILITIES OF 30 KW OR LESS, AND VIRTUAL NET ENERGY METERING (NEM2V) OF A RENEWABLE ELECTRIC GENERATING FACILITY OF 1,000 KW OR LESS (Agreement)¹ is entered into by and between _____ COUNTY OF MONTEREY (Customer-Generator), and Pacific Gas and Electric Company (PG&E), a California Corporation. Customer-Generator and PG&E are sometimes also referred to in this Agreement jointly as "Parties" or individually as "Party." In consideration of the mutual promises and obligations stated in this Agreement and its attachments, the Parties agree as follows:

1. SCOPE AND PURPOSE

- 1.1 This Agreement provides for Customer-Generator to interconnect and operate a Renewable Electrical Generation Facility as defined in Schedule NEM2 (if this is a NEM2 Solar or Wind Generating Facility less than 30 kW, please use form 79-1151A-02) (Generating Facility) in parallel with PG&E's Electric System to serve the electrical loads connected to the electric service account that PG&E uses to interconnect Customer-Generator's Generating Facility. Customer-Generator's Generating Facility is intended primarily to offset part or all of the Customer-Generator's own electrical requirements. Consistent with, and in order to effectuate, the provisions of Sections 2827 of the California Public Utilities Code and PG&E's electric rate Schedule NEM2 (NEM2), Parties enter into this Agreement. This Agreement applies to the Customer-Generator's Generating Facilities identified below with the specified characteristics and generating capacity, and does not allow interconnection or operation of facilities different than those described.

2. SUMMARY AND DESCRIPTION OF CUSTOMER-GENERATOR'S GENERATING FACILITY AND DESIGNATION OF OTHERWISE-APPLICABLE RATE SCHEDULE

- 2.1 A description of the Generating Facility, including a summary of its significant components, and a single-line diagram showing the general arrangement of how Customer-Generator's Generating Facility and loads are interconnected with PG&E's Electric System, is attached to and made a part of this Agreement. (This description is supplied by Customer-Generator as Appendix A).
- 2.2 Generating Facility identification number: 30S802228 (Assigned by PG&E).

¹ Additional forms are available on PG&E's website at <http://www.pge.com/gen>.



INTERCONNECTION AGREEMENT FOR NET ENERGY METERING 2 (NEM2) OF A RENEWABLE ELECTRIC GENERATING FACILITY OF 1,000 KW OR LESS, EXCEPT NEM2 SOLAR OR WIND FACILITIES OF 30 KW OR LESS, AND VIRTUAL NET ENERGY METERING (NEM2V) OF A RENEWABLE ELECTRIC GENERATING FACILITY OF 1,000 KW OR LESS

2.3 Customer-Generator's electric service agreement ID number: 6428834144
(Assigned by PG&E).

2.4 Name and address used by PG&E to locate the electric service account used to interconnect the Generating Facility with PG&E's Electric System:

Name: COUNTY OF MONTEREY

Address: 1200 AGUAJITO RD

City/Zip Code: MONTEREY / 93940

2.5 The Gross Nameplate Rating of the Generating Facility: 327 kW.

2.6 The Net Nameplate Rating of the Generating Facility: 367.937 kW.

2.7 The expected annual energy production of the Generating Facility is 1,008,720 kWh.

2.8 Customer-Generator's otherwise-applicable rate schedule as of the execution of this Agreement is B10S.

2.9 The Generating Facility's expected date of Initial Operation is March 2025.
The expected date of Initial Operation shall be within two years of the date of this Agreement.

2.10 Smart Inverters - For Customer-Generator applications received on or after September 9, 2017, the Customer-Generator certifies that their inverter-based Generating Facilities fully comply with Section Hh of Rule 21, including configuration of protective settings and default settings, in accordance with the specifications therein.

Distribution Provider may require a field verification of the Customer-Generator's inverter. Customer-Generator further agrees to cooperate fully with any such request and make their inverter available to the Distribution Provider for such verification. Customer-Generator understands that in the event the inverter is not set in accordance with Section Hh of Rule 21, Customer-Generator will need to cease operation of generating facility until verification is confirmed by Distribution Provider.

(Solar inverter models and firmware versions that comply with Rule 21 Section Hh can be found at <https://www.energy.ca.gov/programs-and-topics/topics/renewable-energy/solar-equipment-lists>.)

Verification of compliance with such requirements shall be provided by the Customer-Generator upon request by PG&E in accordance with PG&E's Electric Rule 21.

An "existing inverter" is defined as an inverter that is a component of an existing Generating Facility that meets one or more of the following conditions:

- (a) it is already approved by PG&E for interconnection prior to September 9, 2017
- (b) the Customer-Generator has submitted the interconnection application prior to September 9, 2017,
- (c) the Customer-Generator provides evidence of having applied for an electrical permit for the Generating Facility installation that is dated prior to September 9,



INTERCONNECTION AGREEMENT FOR NET ENERGY METERING 2 (NEM2) OF A RENEWABLE ELECTRIC GENERATING FACILITY OF 1,000 KW OR LESS, EXCEPT NEM2 SOLAR OR WIND FACILITIES OF 30 KW OR LESS, AND VIRTUAL NET ENERGY METERING (NEM2V) OF A RENEWABLE ELECTRIC GENERATING FACILITY OF 1,000 KW OR LESS

2017 and submitted a complete interconnection application² no later than March 31, 2018, or

(d) the Customer-Generator provides evidence of a final inspection clearance from the governmental authority having jurisdiction over the Generating Facility prior to September 9, 2017.

All “existing inverters” are not required to be Smart Inverters and are only subject to Section H of Rule 21. Customer-Generator replacing an “existing inverter” certifies it is being replaced with either:

- (i) inverter equipment that complies with Section Hh of Rule 21, (encouraged); or
- (ii) a conventional inverter that is of the same size and equivalent ability to that of the inverter being replaced, as allowed in Rule 21 Section H.3.d.ii.

3. DOCUMENTS INCLUDED AND DEFINED TERMS

3.1 This Agreement includes the following exhibits that are specifically incorporated herein and made a part of this Agreement.

Appendix A	Description of Generating Facility and Single-Line Diagram (Supplied by Customer-Generator).
Appendix B	A Copy of <i>PG&E's Agreement for Installation or Allocation of Special Facilities</i> (Forms 79-255, 79-280, 79-702) or <i>Agreements to Perform Any Tariff Related Work</i> (62-4527), if applicable (Formed by the Parties).
Appendix C	Schedule NEM2 / NEM2V Customer-Generator Warranty That it Meets the Requirements for an Eligible Customer-Generator and Is an Eligible Renewable Electrical Generation Facility Pursuant to Section 2827 of the California Public Utilities Code (if applicable).
Appendix D	NEM2 Load Aggregation Customer-Generator Declaration Warranting NEM2 Aggregation Is Located On Same or Adjacent or Contiguous Property to Generator Parcel (if applicable)
Appendix E	Customer-Generator Affidavit Warranting That NEM2V Arrangement Is Sized to Load (if applicable)
Appendix F	NEMV, NEM2V, Storage (if applicable)

² A complete application consists all of the following without deficiencies:

1. A completed Interconnection Application including all supporting documents and required payments, (continued next page)
2. A completed signed Interconnection Agreement,
3. Evidence of the Customer-Generator final inspection clearance from the governmental authority having jurisdiction over the generating system.



Pacific Gas and
Electric Company®

INTERCONNECTION AGREEMENT FOR NET ENERGY METERING 2 (NEM2) OF A RENEWABLE ELECTRIC GENERATING FACILITY OF 1,000 KW OR LESS, EXCEPT NEM2 SOLAR OR WIND FACILITIES OF 30 KW OR LESS, AND VIRTUAL NET ENERGY METERING (NEM2V) OF A RENEWABLE ELECTRIC GENERATING FACILITY OF 1,000 KW OR LESS

Appendix G Operating Requirements for Energy Storage Device(s) (when applicable)

In addition, PG&E Electric Tariff Rules and Rates, including but not limited to Electric Rules 2, 14, 15, 16, and 21, Schedule NEM2 (if applicable), Schedule NEM2V (if applicable) and Customer-Generator's otherwise-applicable rate schedule, available at PG&E's website at www.pge.com or by request, are specifically incorporated herein and made part of this Agreement.

- 3.2 When initially capitalized, whether in the singular or in the plural, the terms used herein shall have the meanings assigned to them either in this Agreement or in PG&E's Electric Rule 21, Section C.

4. TERM AND TERMINATION

- 4.1 This Agreement shall become effective as of the last date entered in Section 20 below. The Agreement shall continue in full force and effect until the earliest date that one of the following events occurs:
- (a) The Parties agree in writing to terminate the Agreement.
 - (b) Unless otherwise agreed in writing by the Parties, at 12:01 A.M. on the day following the date the electric service account through which Customer-Generator's Generating Facility is interconnected to PG&E is closed or terminated.
 - (c) At 12:01 A.M. on the 61st day after Customer-Generator or PG&E provides written Notice pursuant to Section 10 below to the other Party of Customer-Generator's or PG&E's intent to terminate this Agreement.
- 4.2 Customer-Generator may elect to terminate this Agreement pursuant to the terms of Section 4.1(c) for any reason. PG&E may elect to terminate this Agreement pursuant to the terms of Section 4.1(c) for one or more of the following reasons:
- (a) A change in applicable rules, tariffs, or regulations, as approved or directed by the Commission, or a change in any local, state or federal law, statute or regulation, either of which materially alters or otherwise affects PG&E's ability or obligation to perform PG&E's duties under this Agreement; or,
 - (b) Customer-Generator fails to take all corrective actions specified in PG&E's Notice that Customer-Generator's Generating Facility is out of compliance with the terms of this Agreement within the time frame set forth in such Notice; or,
 - (c) Customer-Generator abandons the Generating Facility. PG&E shall deem the Generating Facility to be abandoned if PG&E determines, in its sole opinion, the Generating Facility is nonoperational and Customer-Generator does not provide a substantive response to PG&E Notice of its intent to terminate this Agreement as a result of Customer-Generator's apparent abandonment of the Generating Facility affirming Customer-Generator's intent and ability to continue to operate the Generating Facility; or,
 - (d) Customer-Generator's Generating Facility ceases to meet all applicable safety and performance standards set out in Section 5.



Pacific Gas and
Electric Company®

INTERCONNECTION AGREEMENT FOR NET ENERGY METERING 2 (NEM2) OF A RENEWABLE ELECTRIC GENERATING FACILITY OF 1,000 KW OR LESS, EXCEPT NEM2 SOLAR OR WIND FACILITIES OF 30 KW OR LESS, AND VIRTUAL NET ENERGY METERING (NEM2V) OF A RENEWABLE ELECTRIC GENERATING FACILITY OF 1,000 KW OR LESS

- 4.3 Notwithstanding any other provisions of this Agreement, PG&E shall have the right to unilaterally file with the Commission, pursuant to the Commission's rules and regulations, an application to terminate this Agreement.
- 4.4 Any agreements attached to and incorporated into this Agreement shall terminate concurrently with this Agreement unless the Parties have agreed otherwise in writing.

5. GENERATING FACILITY REQUIREMENTS

- 5.1 Customer-Generator's Generating Facility must meet all applicable safety and performance standards established by the National Electrical Code, the Institute of Electrical and Electronics Engineers, and accredited testing laboratories such as Underwriters Laboratories and, where applicable, rules of the Commission regarding safety and reliability including Rule 21.
- 5.2 Customer-Generator shall: (a) maintain the Generating Facility and Interconnection Facilities in a safe and prudent manner and in conformance with all applicable laws and regulations including, but not limited to, Section 5.1, and (b) obtain any governmental authorizations and permits required for the construction and operation of the Generating Facility and Interconnection Facilities. Customer-Generator shall reimburse PG&E for any and all losses, damages, claims, penalties, or liability it incurs as a result of Customer-Generator's failure to obtain or maintain any governmental authorizations and permits required for construction and operation of Customer-Generator's Generating Facility.
- 5.3 Customer-Generator shall not commence parallel operation of the Generating Facility until PG&E has provided express written approval. Such approval shall normally be provided no later than thirty (30) business days following PG&E's receipt of: (1) a completed *Rule 21 Generator Interconnection Application* (Form 79-1174-02), including all supporting documents and payments as described in the Application; (2) a signed and completed *INTERCONNECTION AGREEMENT FOR A NET ENERGY METERING (NEM2/NEM2V) OF A RENEWABLE ELECTRICAL GENERATION FACILITY OF 1,000 KW OR LESS, EXCEPT SOLAR OR WIND* (Form 79-XXXX-02); and (3) a copy of the Customer-Generator's final inspection clearance from the governmental authority having jurisdiction over the Generating Facility. Such approval shall not be unreasonably withheld. PG&E shall have the right to have representatives present at the Commissioning Test as defined in Rule 21. Customer-Generator shall notify PG&E at least five (5) business days prior to the initial testing.
- 5.4 In order to promote the safety and reliability of the customer Generating Facility, the applicant certifies that as a part of each interconnection request for NEM2, that all major solar system components are on the verified equipment list maintained by the California Energy Commission and certifies that other equipment, as determined by PG&E, has safety certification from a nationally recognized testing laboratory.
- 5.5 Applicant certifies as a part of each interconnection request for NEM2 that
 - (i) a warranty of at least 10 years has been provided on all equipment and on its installation, or
 - (ii) a 10-year service warranty or executed "agreement" has been provided ensuring proper maintenance and continued system performance.



Pacific Gas and
Electric Company®

INTERCONNECTION AGREEMENT FOR NET ENERGY METERING 2 (NEM2) OF A RENEWABLE ELECTRIC GENERATING FACILITY OF 1,000 KW OR LESS, EXCEPT NEM2 SOLAR OR WIND FACILITIES OF 30 KW OR LESS, AND VIRTUAL NET ENERGY METERING (NEM2V) OF A RENEWABLE ELECTRIC GENERATING FACILITY OF 1,000 KW OR LESS

- 5.6 Customers on this tariff must pay for the interconnection of their Generation Facilities as provided in Electric Rule 21, pursuant to Decision 16-01-044.

6. INTERCONNECTION FACILITIES

- 6.1 Customer-Generator and/or PG&E, as appropriate, shall provide Interconnection Facilities that adequately protect PG&E's Electric System, personnel, and other persons from damage or injury, which may be caused by the operation of Customer-Generator's Generating Facility.
- 6.2 Customer-Generator shall be solely responsible for the costs, design, purchase, construction, permitting, operation, and maintenance of the Interconnection Facilities that Customer-Generator owns.
- 6.3 If the provisions of PG&E's Electric Rule 21, or any other tariff or rule approved by the Commission, require PG&E to own and operate a portion of the Interconnection Facilities, Customer-Generator and PG&E shall promptly execute an Special Facilities Agreement that establishes and allocates responsibility for the design, installation, operation, maintenance, and ownership of the Interconnection Facilities. This Special Facilities Agreement shall be attached to and made a part of this Agreement as Appendix B.

7. LIMITATION OF LIABILITY

Each Party's liability to the other Party for any loss, cost, claim, injury, liability, or expense, including reasonable attorney's fees, relating to or arising from any act or omission in its performance of this agreement, shall be limited to the amount of direct damage actually incurred. In no event shall either Party be liable to the other Party for any indirect, special, consequential, or punitive damages of any kind whatsoever.

8. INSURANCE

- 8.1. Customer-Generator Facility is required to comply with standards and rules set forth in Section 5 and provide the following for insurance policies in place.

- (a) For NEM2V Customer-Generators only, to the extent that Customer-Generator has currently in force property insurance and commercial general liability or personal liability insurance, Customer-Generator agrees that it will maintain such insurance in force for the duration of this Agreement in no less amounts than those currently in effect. Pacific Gas and Electric Company shall have the right to inspect or obtain a copy of the original policy or policies of insurance prior to commencing operation. As long as Customer-Generator meets the requirements of this Section 8.1(a), Customer-Generator shall not be required to purchase any additional liability insurance.

☐ I have insurance. I hereby certify that there is presently insurance coverage in the amount of \$_____ for the Schedule NEM2V Generating Facility location.



Pacific Gas and
Electric Company®

INTERCONNECTION AGREEMENT FOR NET ENERGY METERING 2 (NEM2) OF A RENEWABLE ELECTRIC GENERATING FACILITY OF 1,000 KW OR LESS, EXCEPT NEM2 SOLAR OR WIND FACILITIES OF 30 KW OR LESS, AND VIRTUAL NET ENERGY METERING (NEM2V) OF A RENEWABLE ELECTRIC GENERATING FACILITY OF 1,000 KW OR LESS

Insuring Company's Name: _____

Insurance Policy # _____

☐ I do not have insurance. I hereby certify that there is presently \$0 (zero) dollars of insurance for the Schedule NEM2V Generating Facility location.

- 8.2. Customer-Generator shall furnish the required certificates and all endorsements to PG&E prior to Parallel Operation.
- 8.3. The certificate shall provide thirty (30) calendar days' written notice to PG&E prior to cancellation, termination, alteration, or material change of such insurance.
- 8.4. PG&E shall have the right to inspect or obtain a copy of the original policy or policies of insurance.

If at any time during this agreement the Customer-Generator fails to meet the requirements in Section 5, the following insurance shall apply:

Customer-Generator shall procure and maintain a commercial general liability insurance policy at least as broad as the Insurance Services Office (ISO) commercial general liability coverage "occurrence" form; or, if Customer-Generator is an individual, then liability coverage with respect to premises and use at least as broad as the ISO homeowners' or personal liability Insurance occurrence policy form, or substitute, providing equivalent coverage no less than the following limits, based on generator size:

- (a) Two million dollars (\$2,000,000) for each occurrence if the Gross Nameplate Rating of the Generating Facility is greater than one hundred (100) kW; or
- (b) One million dollars (\$1,000,000) for each occurrence if the Gross Nameplate Rating of the Generating Facility is greater than twenty (20) kW and less than or equal to one hundred (100) kW; or
- (c) Five hundred thousand dollars (\$500,000) for each occurrence if the Gross Nameplate Rating of the Generating Facility is twenty (20) kW or less;
- (d) Two hundred thousand dollars (\$200,000) for each occurrence if the Gross Nameplate Rating of the Generating Facility is ten (10) kW or less and the Generating Facility is connected to an account receiving residential service from PG&E.

The insurance shall, by endorsement:

- (a) Add PG&E as an additional insured;
- (b) State that coverage provided is primary and is not in excess to or contributing with any insurance or self-insurance maintained by PG&E.
- (c) Contain a severability of interest clause or cross-liability clause



Pacific Gas and
Electric Company®

INTERCONNECTION AGREEMENT FOR NET ENERGY METERING 2 (NEM2) OF A RENEWABLE ELECTRIC GENERATING FACILITY OF 1,000 KW OR LESS, EXCEPT NEM2 SOLAR OR WIND FACILITIES OF 30 KW OR LESS, AND VIRTUAL NET ENERGY METERING (NEM2V) OF A RENEWABLE ELECTRIC GENERATING FACILITY OF 1,000 KW OR LESS

- 8.5. If Customer-Generator's Generating Facility is connected to an account receiving residential service from PG&E and the requirement of Section 8.1 prevents Customer-Generator from obtaining the insurance required in this Section, then upon Customer-Generator's written Notice to PG&E in accordance with Section 10.1, the requirements of Section 8.1 may be waived.
- 8.6. Customer-Generator may self-insure with approval from PG&E. Evidence of an acceptable plan to self-insure, at least thirty (30) calendar days' prior to operations shall be submitted. Customer-Generators such as state agencies that self-insure under this section are exempt from Section 8.1.

If Customer-Generator ceases to self-insure to the level required hereunder, or if Customer-Generator is unable to provide continuing evidence of Customer-Generator's ability to self-insure, Customer-Generator agrees to immediately obtain the coverage required under agreement.

- 8.7. All required certificates, endorsements or letters of self-insurance shall be issued and submitted via email or mail to the following:

Pacific Gas and Electric Company
Attn: Electric Grid Interconnection – Contract Management
300 Lakeside Drive, Suite 210
Oakland, CA 94612
Email: EGIContractMgmt@pge.com

9. INDEMNITY FOR FAILURE TO COMPLY WITH INSURANCE PROVISIONS

- 9.1 If Customer-Generator fails to comply with the insurance provisions of this Agreement, Customer-Generator shall, at its own cost, defend, save harmless and indemnify PG&E, its directors, officers, employees, agents, assignees, and successors in interest from and against any and all loss, liability, damage, claim, cost, charge, demand, or expense of any kind or nature (including attorney's fees and other costs of litigation) resulting from the death or injury to any person or damage to any property, including the personnel and property of the utility, to the extent that the utility would have been protected had Customer-Generator complied with all such insurance provisions. The inclusion of this Section 9.1 is not intended to create any expressed or implied right in Customer-Generator to elect not to provide any such required insurance.
- 9.2 The provisions of this Section 9 shall not be construed to relieve any insurer of its obligations to pay any insurance claims in accordance with the provisions of any valid insurance policy.



Pacific Gas and
Electric Company®

INTERCONNECTION AGREEMENT FOR NET ENERGY METERING 2 (NEM2) OF A RENEWABLE ELECTRIC GENERATING FACILITY OF 1,000 KW OR LESS, EXCEPT NEM2 SOLAR OR WIND FACILITIES OF 30 KW OR LESS, AND VIRTUAL NET ENERGY METERING (NEM2V) OF A RENEWABLE ELECTRIC GENERATING FACILITY OF 1,000 KW OR LESS

10. NOTICES

- 10.1 Any written notice, demand, or request required or authorized in connection with this Agreement (Notice) shall be deemed properly given if delivered in person or sent by first class mail, postage prepaid, to the person specified below:

If to PG&E: Pacific Gas and Electric Company
Attention: Electric Grid Interconnection – Contract Management
300 Lakeside Drive, Suite 210
Oakland, CA 94612
Email: EGIContractMgmt@pge.com

If to Customer-Generator:

Customer-Generator Name: COUNTY OF MONTEREY
Address: 1200 AGUAJITO RD
City: MONTEREY
Phone: ()
FAX: ()

- 10.2 A Party may change its address for Notices at any time by providing the other Party notice of the change in accordance with Section 10.1.
- 10.3 The Parties may also designate operating representatives to conduct the daily communications, which may be necessary or convenient for the administration of this Agreement. Such designations, including names, addresses, and phone numbers may be communicated or revised by one Party's Notice to the other.

11. REVIEW OF RECORDS AND DATA

- 11.1 PG&E shall have the right to review and obtain copies of Customer-Generator's operations and maintenance records, logs, or other information such as Generating Facility availability, maintenance outages, circuit breaker operation requiring manual reset, relay targets and unusual events pertaining to Customer-Generator's Generating Facility or its interconnection to PG&E.
- 11.2 Customer-Generator authorizes to release to the California Energy Commission (CEC) information regarding Customer-Generator's facility, including customer name and Generating Facility location, size, and operational characteristics, as requested from time to time pursuant to the CEC's rules and regulations.

12. ASSIGNMENT

Customer-Generator shall not voluntarily assign its rights nor delegate its duties under this Agreement without PG&E's written consent. Any assignment or delegation Customer-Generator makes without PG&E's written consent shall not be valid. PG&E shall not unreasonably withhold its consent to Customer-Generator's assignment of this Agreement.



INTERCONNECTION AGREEMENT FOR NET ENERGY METERING 2 (NEM2) OF A RENEWABLE ELECTRIC GENERATING FACILITY OF 1,000 KW OR LESS, EXCEPT NEM2 SOLAR OR WIND FACILITIES OF 30 KW OR LESS, AND VIRTUAL NET ENERGY METERING (NEM2V) OF A RENEWABLE ELECTRIC GENERATING FACILITY OF 1,000 KW OR LESS

13. NON-WAIVER

None of the provisions of this Agreement shall be considered waived by a Party unless such waiver is given in writing. The failure of a Party to insist in any one or more instances upon strict performance of any of the provisions of this Agreement or to take advantage of any of its rights hereunder shall not be construed as a waiver of any such provisions or the relinquishment of any such rights for the future, but the same shall continue and remain in full force and effect.

14. DISPUTES

14.1 Dispute Resolution

Any dispute arising between the Parties regarding a Party's performance of its obligations under this Agreement or requirements related to the interconnection of the Generating Facility shall be resolved according to the procedures in Rule 21.

15. REVIEW OF RECORDS AND DATA

15.1 Applicable Tax Laws and Regulation

The Parties agree to follow all applicable tax laws and regulations, consistent with CPUC policy and Internal Revenue Service requirements.

15.2 Maintenance of Tax Status

Each Party shall cooperate with the other to maintain the other Party's tax status. Nothing in this Agreement is intended to adversely affect the Distribution Provider's tax exempt status with respect to the issuance of bonds including, but not limited to, local furnishing bonds

16. GOVERNING LAW, JURISDICTION OF COMMISSION, INCLUSION OF PG&E's TARIFF SCHEDULES AND RULES

16.1 This Agreement shall be interpreted, governed, and construed under the laws of the State of California as if executed and to be performed wholly within the State of California without giving effect to choice of law provisions that might apply to the law of a different jurisdiction.

16.2 This Agreement shall, at all times, be subject to such changes or modifications by the Commission as it may from time to time direct in the exercise of its jurisdiction.

16.3 The interconnection and services provided under this Agreement shall at all times be subject to the terms and conditions set forth in the Tariff Schedules and Rules applicable to the electric service provided by PG&E, which Tariff Schedules and Rules are hereby incorporated into this Agreement by this reference.

16.4 Notwithstanding any other provisions of this Agreement, PG&E shall have the right to unilaterally file with the Commission, pursuant to the Commission's rules and regulations, an application for change in rates, charges, classification, service, tariff or rule or any agreement relating thereto.



Pacific Gas and
Electric Company®

INTERCONNECTION AGREEMENT FOR NET ENERGY METERING 2 (NEM2) OF A RENEWABLE ELECTRIC GENERATING FACILITY OF 1,000 KW OR LESS, EXCEPT NEM2 SOLAR OR WIND FACILITIES OF 30 KW OR LESS, AND VIRTUAL NET ENERGY METERING (NEM2V) OF A RENEWABLE ELECTRIC GENERATING FACILITY OF 1,000 KW OR LESS

17. CRD POWER CONTROL SYSTEM CERTIFICATION

When applicable, Customer-Generator confirms that the Renewable Electrical Generation Facility including Energy Storage over 10 kW that has received UL 1741 CRD for Power Control Systems (PCS) certification will comply with either No Grid Charge or No Storage Export as defined in Schedule NEM2.

18. AMENDMENT AND MODIFICATION

This Agreement can only be amended or modified in writing, signed by both Parties.

19. ENTIRE AGREEMENT

This Agreement, including any incorporated Tariff Schedules and Rules, contains the entire Agreement and understanding between the Parties, their agents, and employees as to the subject matter of this Agreement. Each party also represents that in entering into this Agreement, it has not relied on any promise, inducement, representation, warranty, agreement or other statement not set forth in this Agreement or in the incorporated Tariff Schedules and Rules.


20. SIGNATURES

IN WITNESS WHEREOF, the Parties hereto have caused this Agreement to be executed by their duly authorized representatives. This Agreement is effective as of the last date set forth below.

COUNTY OF MONTEREY

(Customer-Generator's Name)

DocuSigned by:



9353DBA6C4ED934

(Signature)

Sonia De La Rosa

(Print Name)

County Administrative officer

(Title)

2/6/2024 | 7:09 AM PST

(Date)

PACIFIC GAS AND ELECTRIC COMPANY

(Signature)

Rafael Macias

(Print Name)

EGI Supervisor

(Title)

(Date)



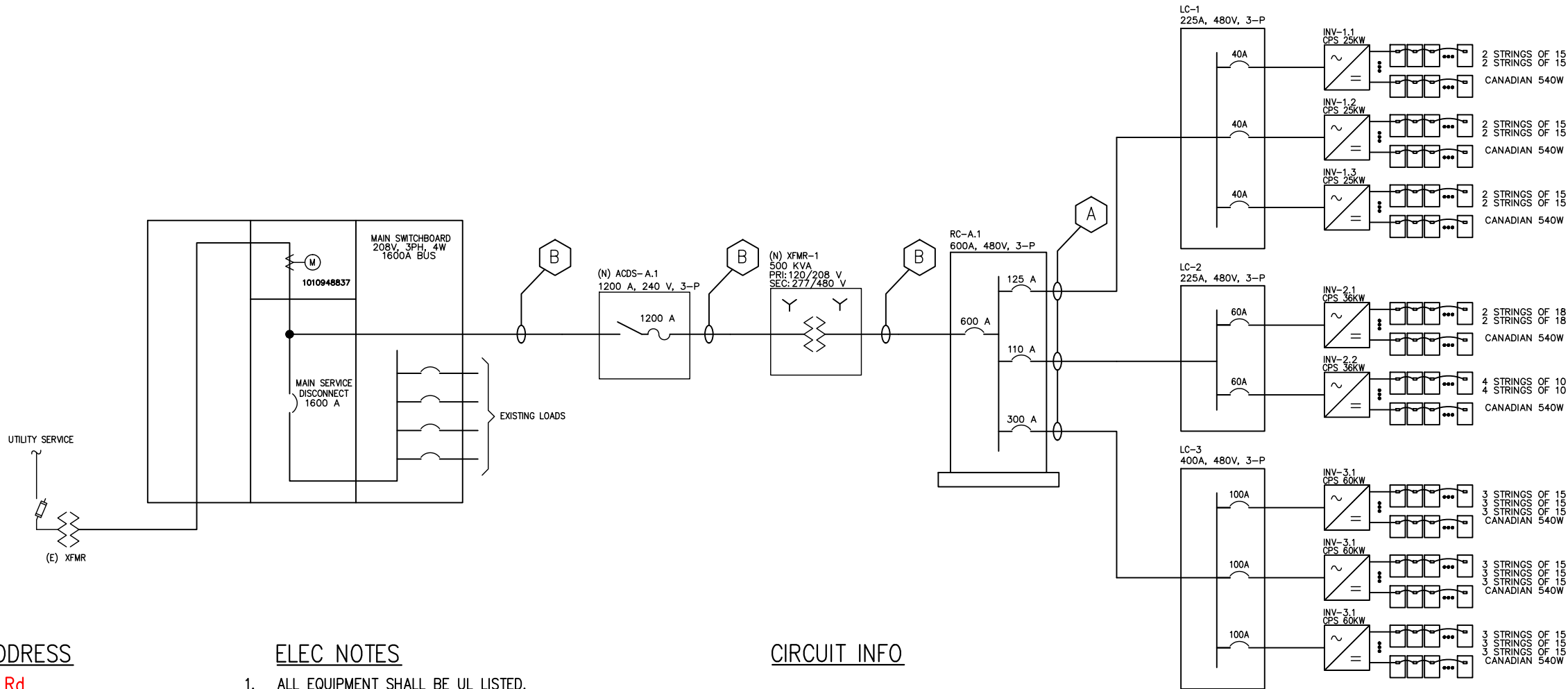
INTERCONNECTION AGREEMENT FOR
NET ENERGY METERING 2 (NEM2)
OF A RENEWABLE ELECTRIC GENERATING FACILITY
OF 1,000 KW OR LESS, EXCEPT NEM2 SOLAR OR WIND
FACILITIES OF 30 KW OR LESS, AND VIRTUAL NET
ENERGY METERING (NEM2V) OF A RENEWABLE
ELECTRIC GENERATING FACILITY OF 1,000 KW OR
LESS

APPENDIX A

DESCRIPTION OF GENERATING FACILITY
AND SINGLE-LINE DIAGRAM

(Provided by Customer-Generator)

H
G
F
E
D
C
B
A
PAPER: ARCH D 24x36"
SIZE: 1.43 MB
FILE: Layout And SLD Template v7.5.dwg
BY: P46423
PLOT DATE: 04/13/2023 03:21 PM



PROJECT ADDRESS

1200 Aguajito Rd
Monterey, CA 93940

PV MODULE SPECS

MANUFACTURER: CANADIAN SOLAR
MODEL: CS6W-540MB-AG
QUANTITY: 737

INVERTER SPECS

MANUFACTURER: CHINT POWER SYSTEMS
MODEL: CPS SCA25KTL-DO/US-480
QUANTITY: 3

MANUFACTURER: CHINT POWER SYSTEMS
MODEL: CPS SCA36KTL-DO/US-480
QUANTITY: 2

MANUFACTURER: CHINT POWER SYSTEMS
MODEL: CPS SCA60KTL-DO/US-480
QUANTITY: 3

AC DISCONNECT SPECS

SQUARE D H328R 1200 A OR EQUIV

TOTAL SYSTEM SIZE

398 KW DC STC
327 KW AC

ELEC NOTES

- ALL EQUIPMENT SHALL BE UL LISTED.
- ALL INVERTER WIRING AND GROUNDING METHODS SHALL CONFORM TO THE MANUFACTURERS RECOMMENDED PRACTICE. REFER TO PLANNING AND INSTALLATION MANUAL FOR THIS GUIDANCE.
- ALL DC DISCONNECTS SHALL BE LABELED "WARNING – ELECTRIC SHOCK HAZARDS – DO NOT TOUCH TERMINALS" AND "TERMINALS ON BOTH LINES AND LOAD SIDES MAY BE ENERGIZED IN THE OPEN POSITION" PER NEC 690.17.
- EXPOSED NON-CURRENT CARRYING METAL PARTS OF MODULE FRAMES, EQUIPMENT, AND ENCLOSURES SHALL BE GROUNDED IN ACCORDANCE WITH NEC 205.134 AND 205.136(A).
- PV SYSTEM MUST BE MARKED WITH WORDING AND LOCATION AS DESCRIBED IN KEY NOTES AND SHEET E-9. MATERIALS USED FOR MARKINGS MUST BE WEATHER RESISTANT. IT IS RECOMMENDED THAT UL969 BE USED AS STANDARD TO DETERMINE WEATHER RATING (UL LISTING OF MARKINGS IS NOT REQUIRED).
- MARKING SHOULD BE PLACED ON ALL INTERIOR AND EXTERIOR DC CONDUIT, RACEWAYS, ENCLOSURES, AND CABLE ASSEMBLIES, EVERY 10 FEET, AT TURNS AND ABOVE AND/OR BELOW PENETRATIONS AND ALL DC COMBINER AND JUNCTION BOXES WITH THE FOLLOWING MARKING:
- EQUIPMENT SHALL BE LOCKABLE AND GUARDED AGAINST ACCESS BY UNQUALIFIED PERSONS.
- DC CONDUCTORS MAY BE DIRECT BURIED.
- AC CONDUCTORS ABOVE GROUND SHALL BE GALVANIZED STEEL.

CIRCUIT INFO



INVERTER OUTPUTS

Array Nam	Array Type	Inverter Nam	Inverter Manufacture r	Inverter Model	Inverter kVA Rat	KW DC Install	DC/AC ratio	AC Voltag	Inverter Amp	Required OCPD	Wiring Config.	Next Device Name	Next Device Type
R1	Ballaste d Roof	INV-1.1	Chint	CPS SCA25KTL-DO-R/US-	25	32.4	1.30	480	30.5	40	3Ø / PE / N (N	LC-1	Sub-Panel
R2	Ballaste d Roof	INV-2.1	Chint	CPS SCA25KTL-DO-R/US-	25	32.4	1.30	480	30.5	40	3Ø / PE / N (N	LC-1	Sub-Panel
R3	Ballaste d Roof	INV-3.1	Chint	CPS SCA25KTL-DO-R/US-	25	32.4	1.30	480	30.5	40	3Ø / PE / N (N	LC-1	Sub-Panel
R4	Ballaste d Roof	INV-2.1	Chint	CPS SCA36KTL-DO/US-480	36	38.9	1.08	480	43.5	60	3Ø / PE / N (N	LC-2	Sub-Panel
C1	Carport/Canop	INV-2.2	Chint	CPS SCA36KTL-DO/US-480	36	43.2	1.20	480	43.5	60	3Ø / PE / N (N	LC-2	Sub-Panel
C2	Carport/Canop	INV-3.1	Chint	CPS SCA60KTL-DO/US-480	60	72.9	1.22	480	72.2	100	3Ø / PE / N (N	LC-3	Sub-Panel
C3	Carport/Canop	INV-4.1	Chint	CPS SCA60KTL-DO/US-480	60	72.9	1.22	480	72.2	100	3Ø / PE / N (N	LC-3	Sub-Panel
C4	Carport/Canop	INV-5.1	Chint	CPS SCA60KTL-DO/US-480	60	72.9	1.22	480	72.2	100	3Ø / PE / N (N	LC-3	Sub-Panel



LOAD CENTER FEEDERS

AC Equipment Name	Equipment Type	Bus Rating / kVA Ratin	AC Amps [A]	Voltage	Next Device Name	Next Device Type	Min. AC OCPD
LC-1	Sub-Panel	225 A	92	480	RC-1	Main-Panel	125
LC-2	Sub-Panel	225 A	87	480	RC-1	Main-Panel	110
LC-3	Sub-Panel	400 A	217	480	RC-1	Main-Panel	300
RC-1	Main-Panel	600 A	395	480	XFMR-1	Step-Down	500
XFMR-1	Step-Down XFMR	500 kVA	912	208	DSCO-1	Disconnect	1200
DSCO-1	Disconnect	1200 A	912	208	SWBD-1	SWBD POI	1200

CLIENT

MONTEREY COUNTY

PROJECT LOCATION

COUNTY COURTHOUSE
1200 AGUAJITO RD
MONTEREY, CA 93940

DESIGNER

engie
ENGIE SERVICES, U.S.
500 12TH STREET, SUITE 300
OAKLAND, CA 94607

CONSULTANT

ENGINEERING APPROVAL

AGENCY APPROVAL

ISSUE

MARK	DATE	DESCRIPTION
0	4/5/2023	ORIGINAL
1	04/13/23	REVISION DESCRIPTION

DESIGNER PROJECT NO.:

DRAWN BY: SL
CHECKED BY:
SCALE: NTS

KEY PLAN

SHEET TITLE

ELEC DIAGRAM

SHEET NUMBER

E-1.0