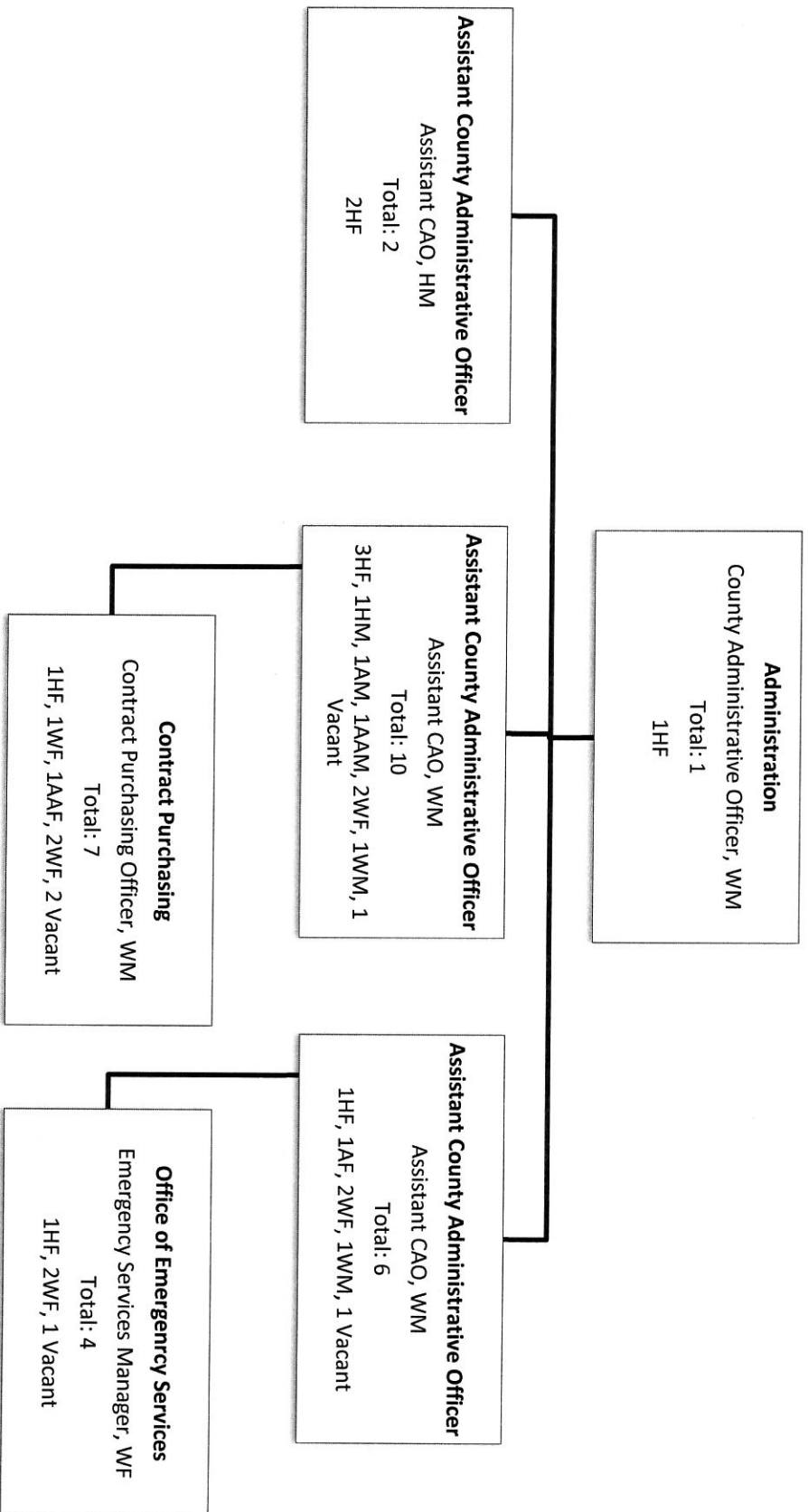
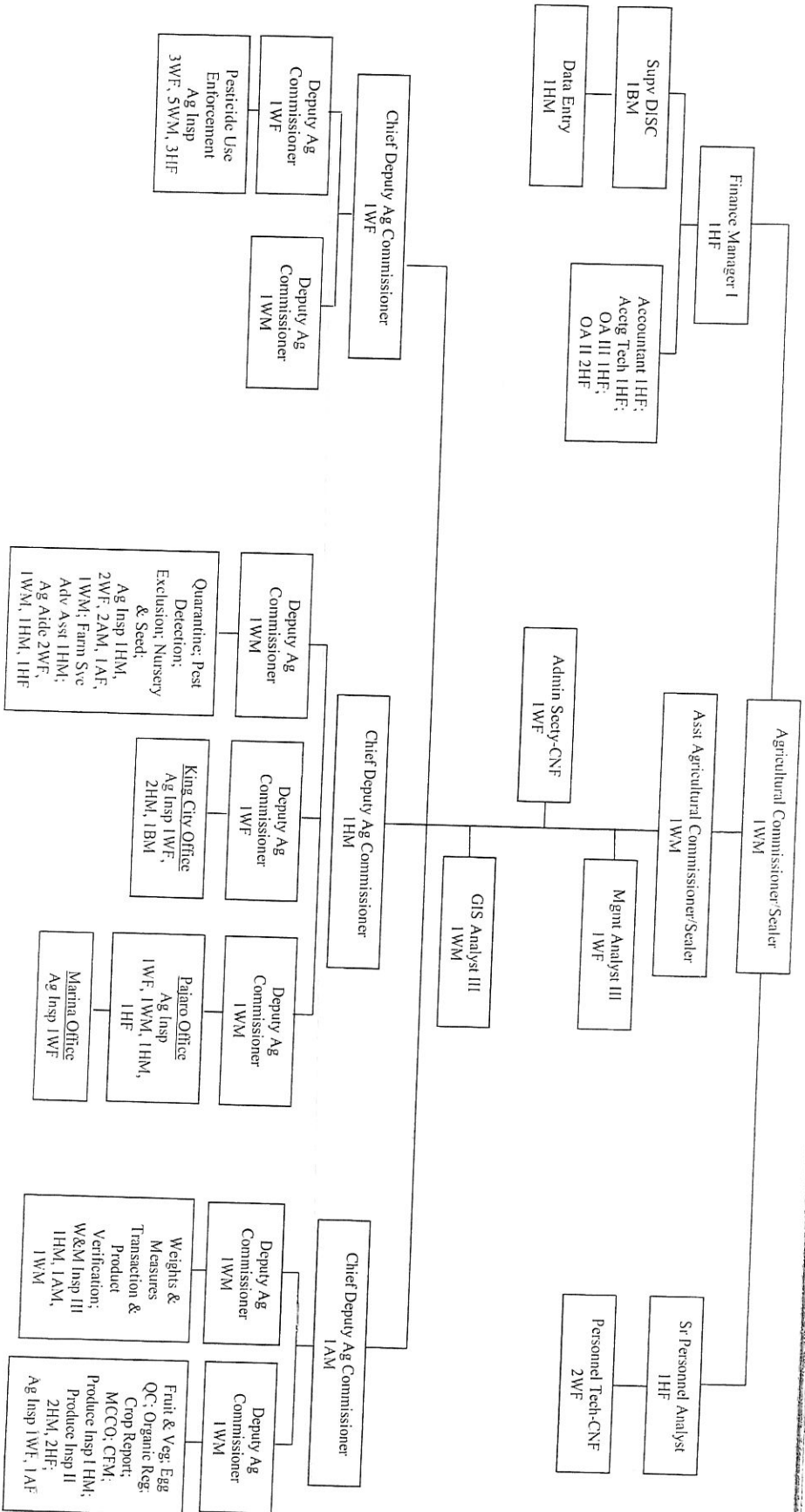


County Administrative Office
Organizational Profile
January, 2014

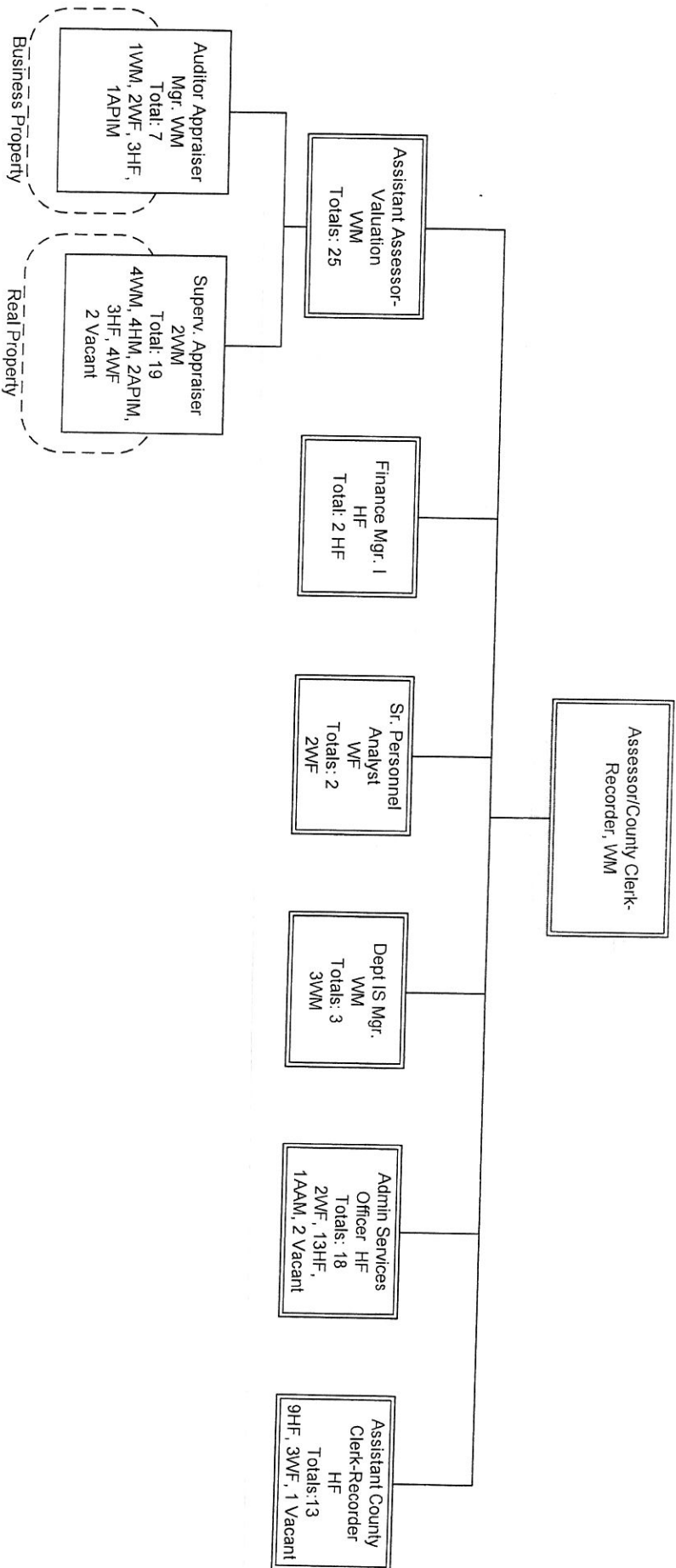


County of Monterey Agricultural Commissioner's Office



2014-01-16 kmn

ASSESSOR/COUNTY CLERK-
 RECORDER'S OFFICE
 Org Profile
 December 2013
 65 FTE

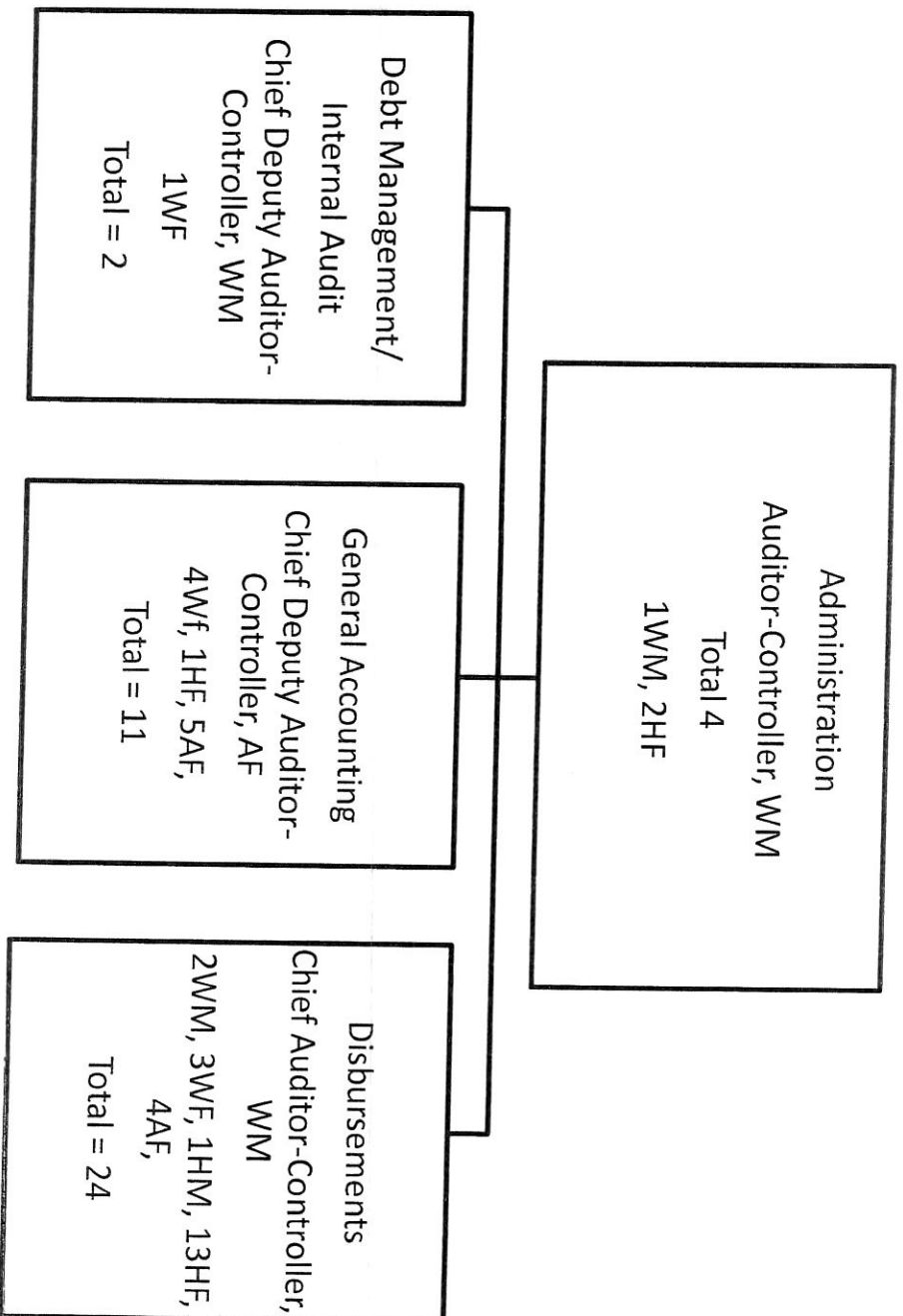


M – Male F – Female

AA - African American; H – Hispanic; API – Asian/Pacific Islander;

W - White other than Hispanic; AI – American Indian/Alaskan Native

Auditor-Controller Organizational Profile December 2013

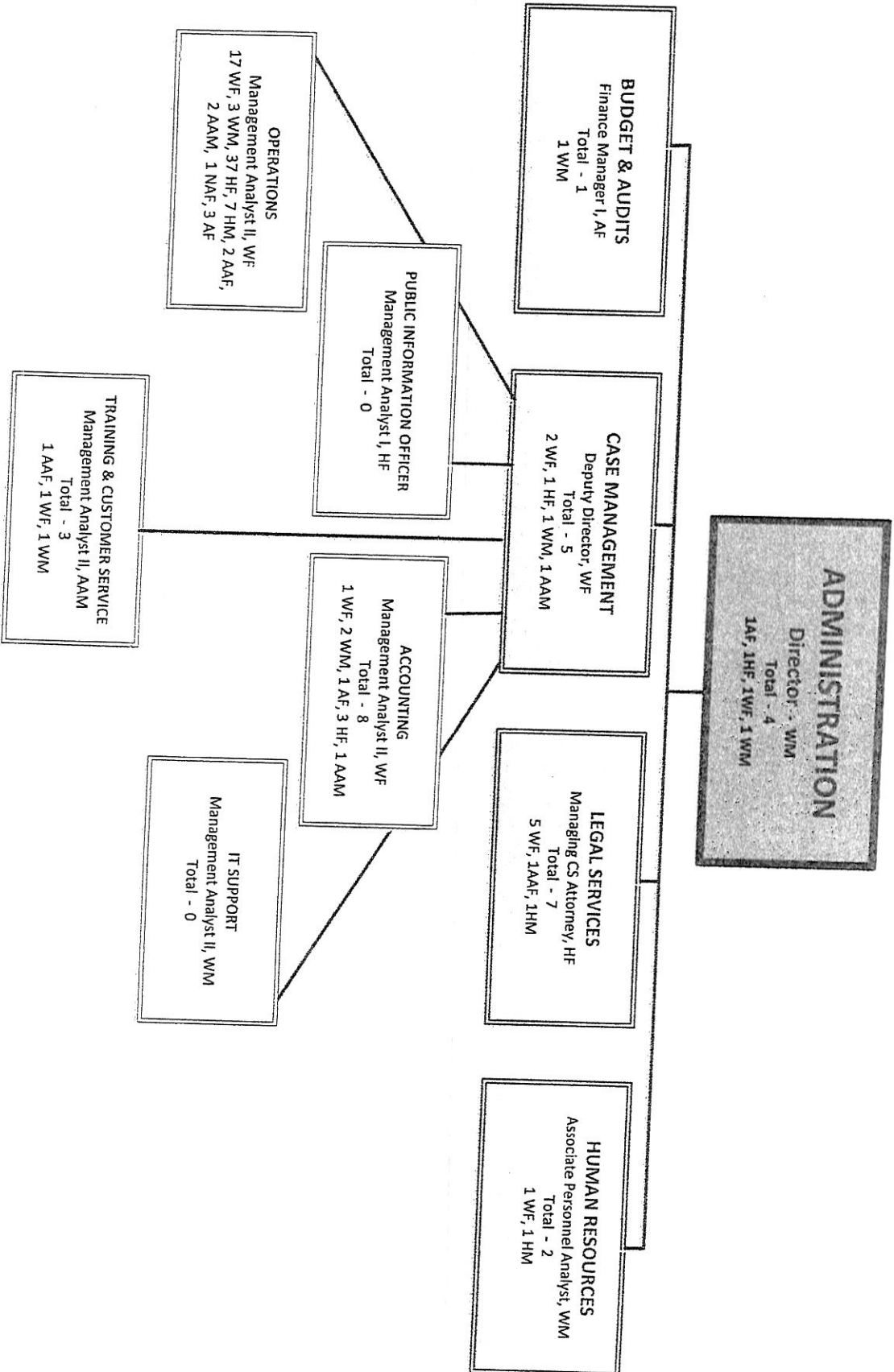


W=White, H=Hispanic, A=Asian, Fil=Filipino, API=Asian Pacific Islander
M=Male, F=Female

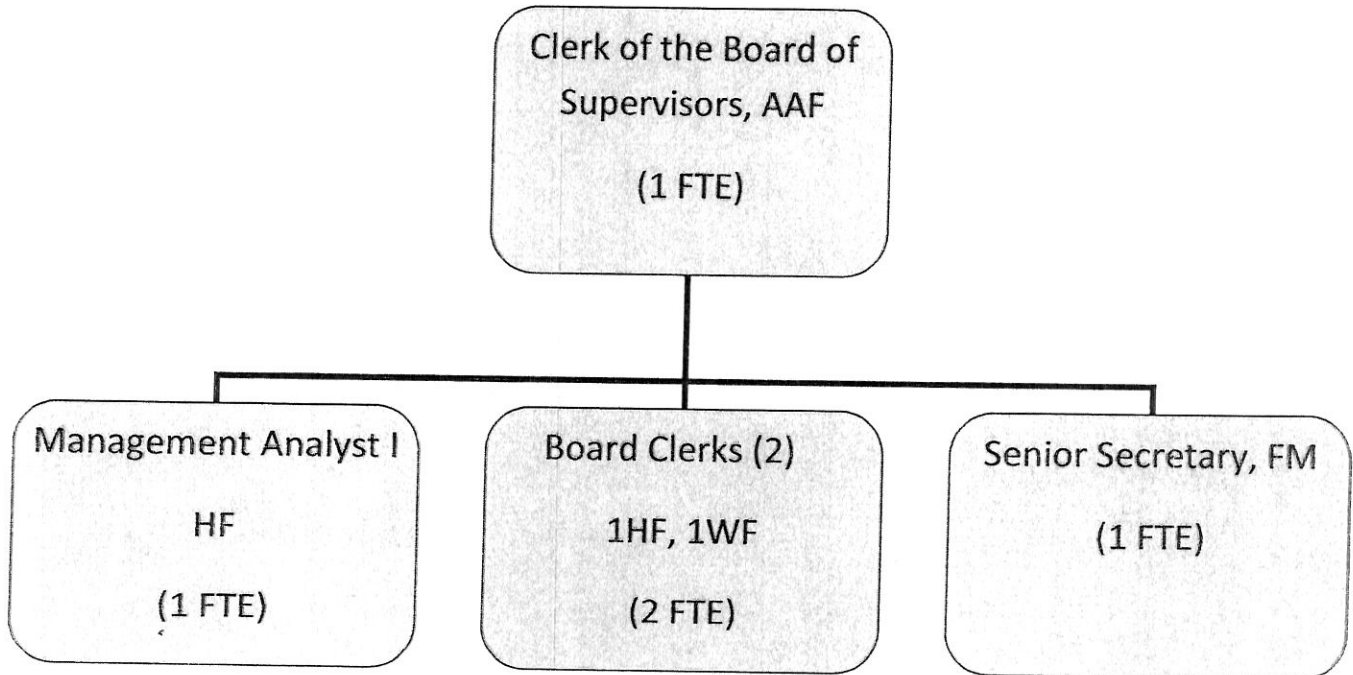
MONTEREY COUNTY

Department of Child Support Services

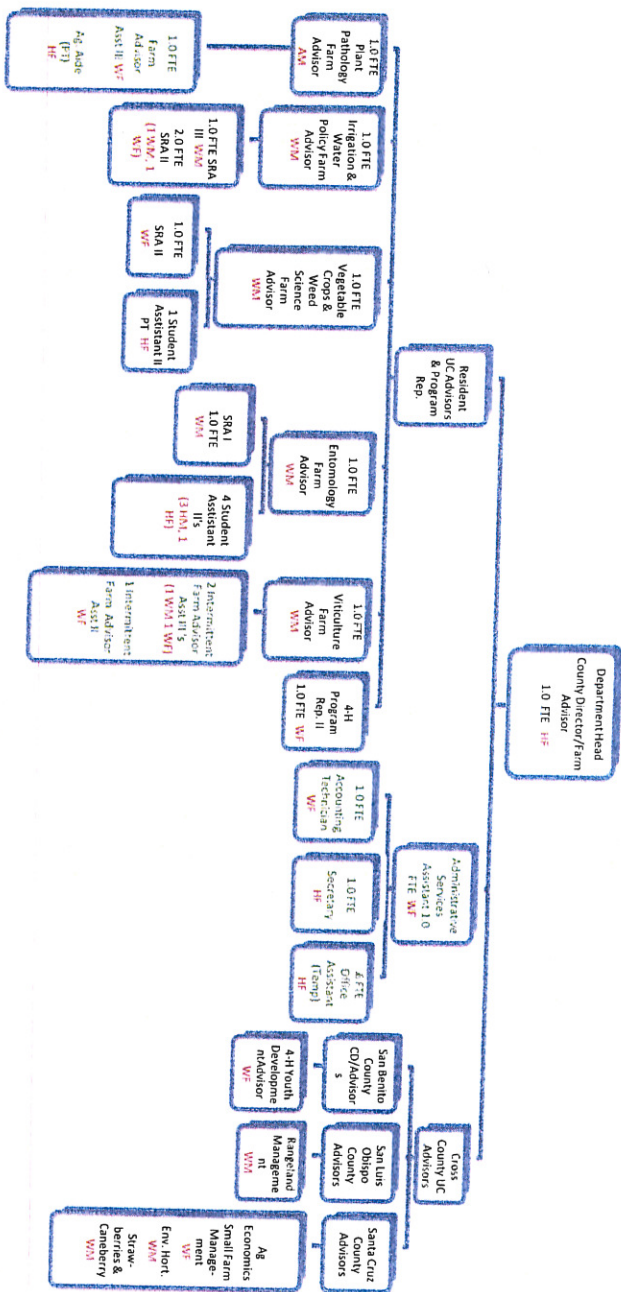
December 2013



**MONTEREY COUNTY
CLERK OF THE BOARD OF SUPERVISORS
ORGANIZATIONAL CHART**

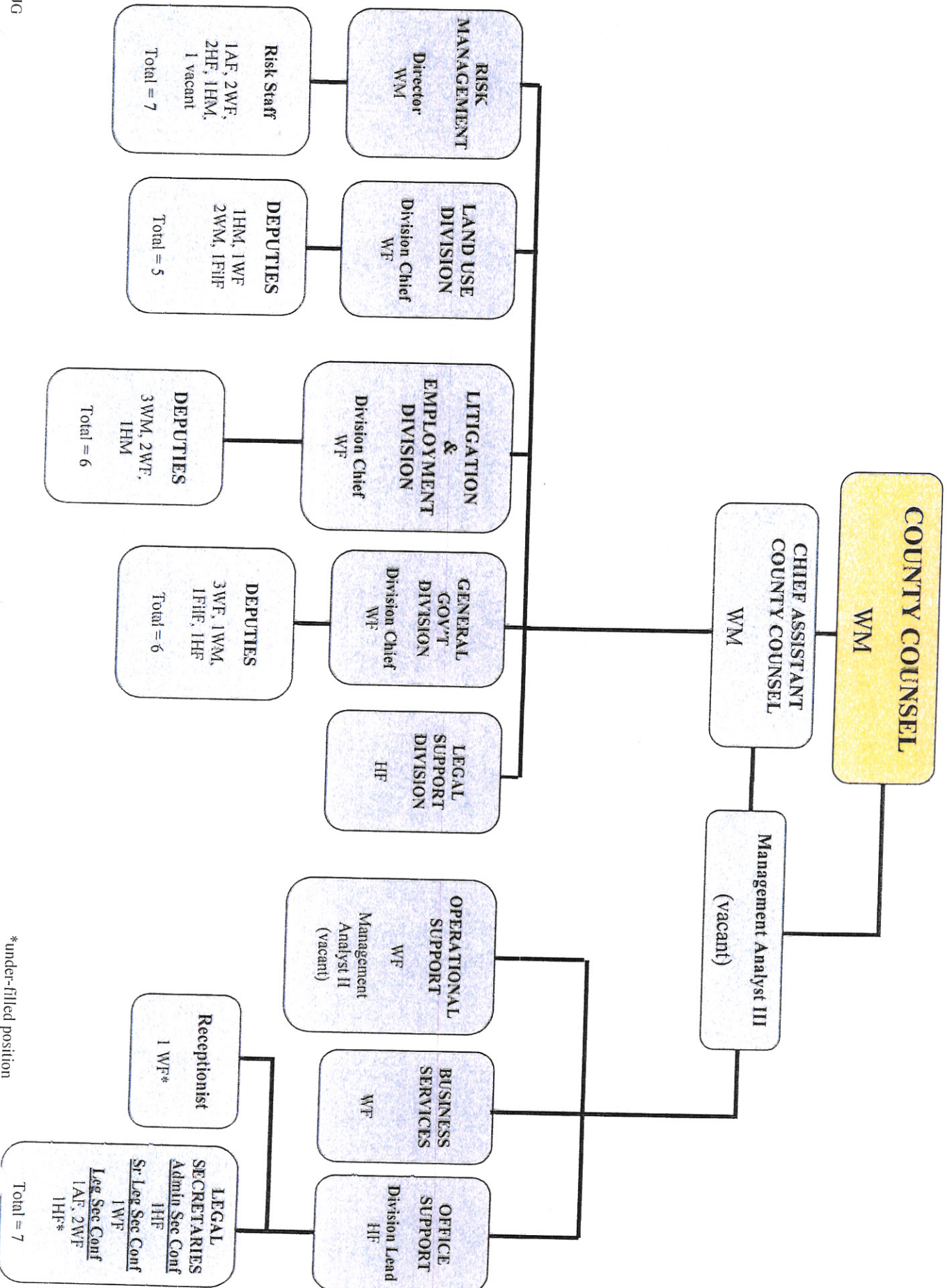


COOPERATIVE EXTENSION



Green Text = County of Monterey Employees Black Text = University of California Employees

10/2013 - COUNTY COUNSEL
ORGANIZATIONAL CHART



*under-filled position

District Attorney

District Attorney, WM

Total = 2

1 - WM

1 - WF

Chief Asst DA,
WM

Total = 3

1 - WM

2 - WF

Finance
Mngr - WM

Total = 5

1 WM

2 WF

1 HF

1 NA/M

Asst DA #1, WM

Total = 11

6 WM

4 WF

1 APIM

Asst DA #2, WF

Total = 11

4 WM

1 HM

2 APIF

1 HF

1 AAF

2 WF

Mngr DA #3, WF

Total = 10

4 WF

3 WM

1 HM

1 HF

1 APIF

Investigative
Bureau
Chief, WM

Total = 25

1 APIM

5 HM

11 WM

6 WF

2 HF

Victims
Mngr - WF

Total = 9

5 HF

2 WF

1 AAF

1 APIF

Clerical
Supv - HF

Total = 25

2 HM

9 WF

13 HF

1 APIF

Mngr DA #1,
WM

Total = 9

4 WM

4 WF

1 HM

Mngr DA #2,
HM

Total = 15

1 HM

5 WM

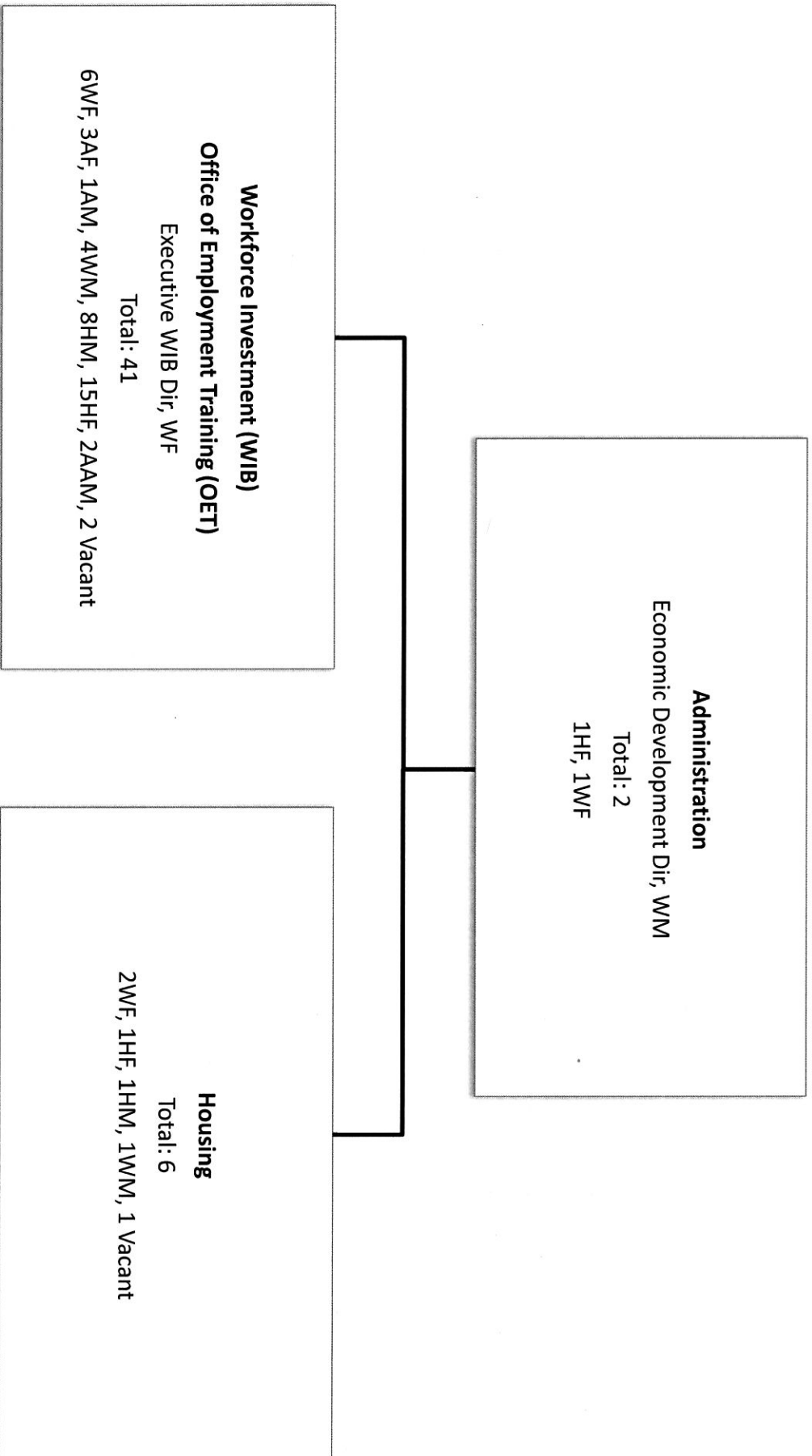
6 WF

2 APIF

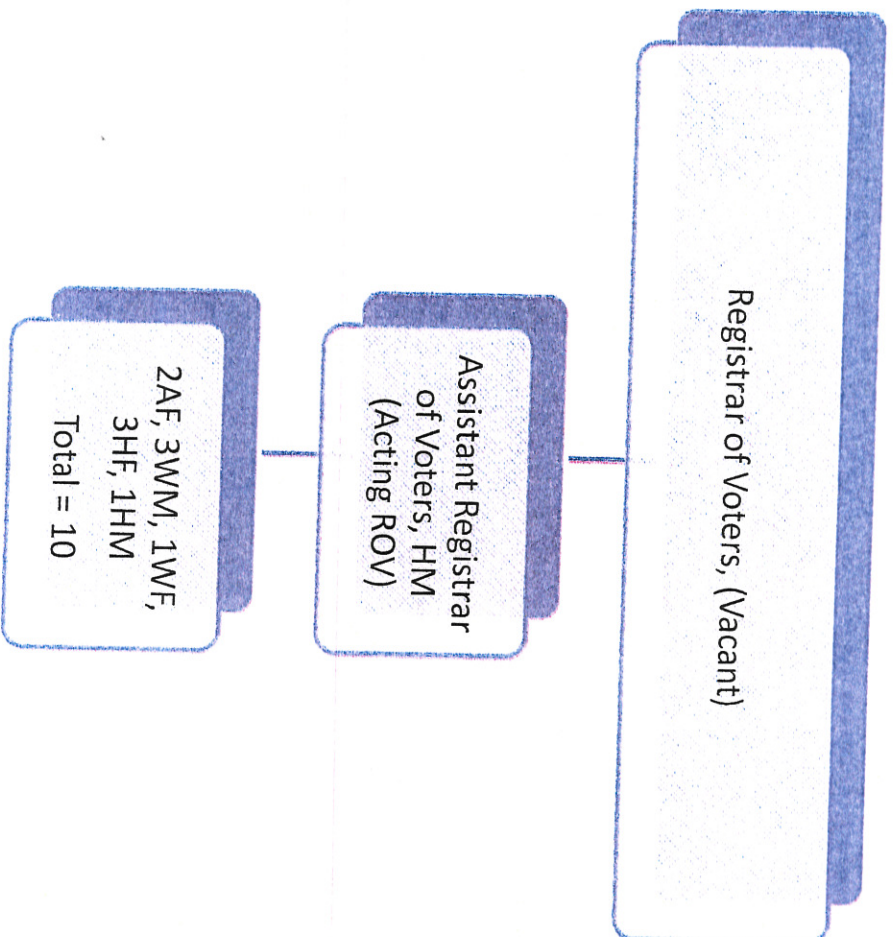
1 HF

Total = 125

Economic Development Department
Organizational Profile
January, 2014

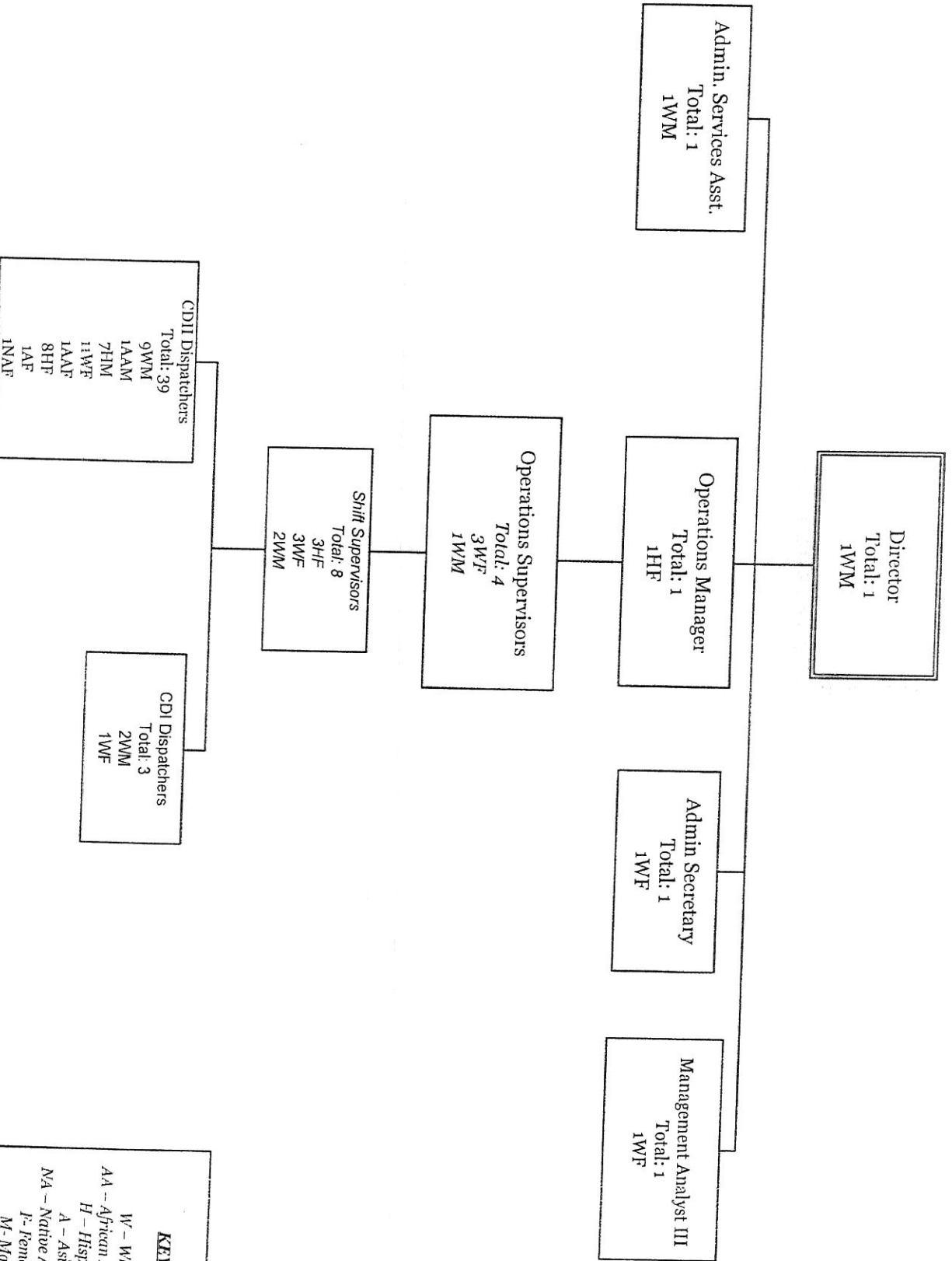


Monterey County Elections Department



W=White, H=Hispanic, A=Asian
M=Male, Female

Emergency Communications Department

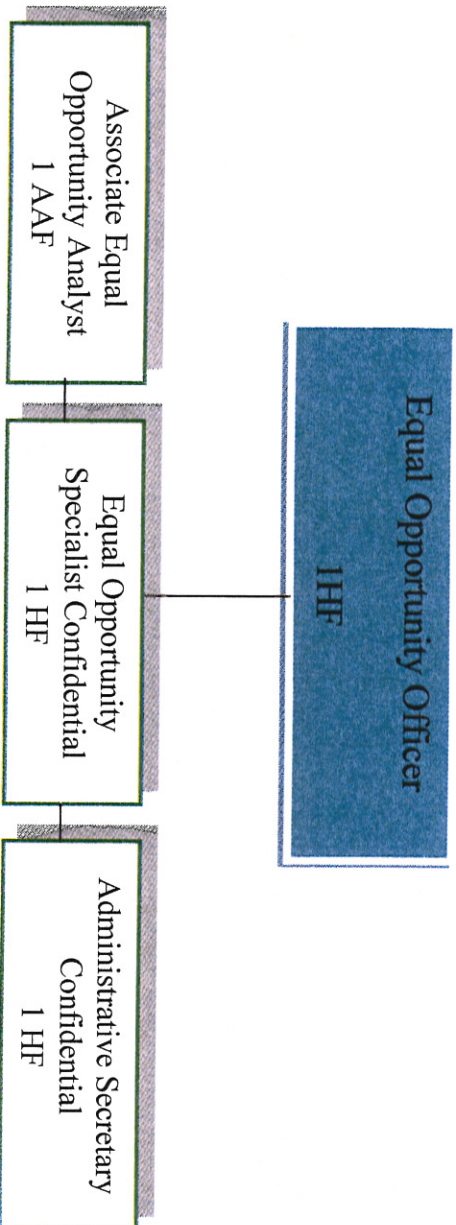


Wendy

2014
Full Time Employees Budgeted: 67

KEY
 W - White
 AA - African American
 H - Hispanic
 A - Asian
 NA - Native American
 F - Female
 M - Male

EQUAL OPPORTUNITY OFFICE



AA - African American; H - Hispanic

F - Female



Public Information Officer
Karen Smith

SART Program
Shirlee Goldman, Nurse Practitioner II

DIRECTOR OF HEALTH
Ray Bullock

Administrative Secretary - Confidential
Suzie Mckee

Department of Health Organizational Chart

Planning, Evaluation, and Policy
Public Health Program Manager II
Kristi Hamm

Accreditation
Department Performance Management & Continuous Quality Improvement
Assessment
Project Assessment and Evaluation
Grants Development
Grant Writing and Coordination
Planning
Program Alignment and Policy Development

Administration Bureau
Elsa Jimenez
Assistant Director of Health
Bureau Chief

Finance
Accounts Payable & Receivable
Budget Preparation & Oversight
Financial Reporting
Financial Compliance - Guidance & Oversight
General Accounting
Facilities
Capital Projects
Facilities Management
Information Technology
Automated Information Systems
Procurement & Accounting

Mental Health
Adoption Preservation
Substance Abuse Treatment
Community Support
Crisis Services
Criminal Justice Services
Day Treatment
Dual Diagnosis Programs
Inpatient
Outpatient
Family Intervention Services
Family Preservation & Homeless
Homeless Services
Institutions of Mental Disease
Intensive Home Based Services
Mental Health Court
Outreach & Engagement
Parenting Education
Peer Counseling
Prevention
School-Based Counseling

Behavioral Health Bureau
Wayne Clark
Behavioral Health Director
Bureau Chief

Site Hospital
Education
Supportive Employment
Supportive Housing
Wellness Center
Workforce Education & Training
Alcohol & Drug
DUI-First Offender
DUI-Multiple Offender
Drug Court
Drug Diversion
Narcotics Treatment Programs
Outpatient Services
Pueblo del Mar - Transitional Housing
Residential

Clinic Services Bureau
Julie Edgemo
Clinic Services Director
Bureau Chief

Clinic Administration
Financial & Information System Maint.
Billing
Accounting
Management Reporting
EQHC Clinics
Alisal Health Center
Lateral Family Practice Clinic
Lateral Internal Medicine Clinic
Lateral Pediatric Clinic
Monterey County Health Clinic at Marina
Seaside Family Health Center
Public Health Clinics
Latent TB Infection
HIV Testing
Sexually Transmitted Infection
Adult Immunizations

Health Officer/Public Health Bureau
Dr. Edward Moreno, Health Officer/Director of Public Health
Bureau Chief

Children's Medical Services (CMS)
California Children's Services (CCS)
Child Health Disability Program (CHDP)
Lead Prevention Program
Medical Therapy Unit (MTU)
Community Health Retail Clinics
Community Regional Nursing Specialty Clinic
AIDS Surveillance
Communicable Disease Control
Community Surveillance
TB Case Management
Vital Records
Laboratory
Public Health Lab
Environmental Testing

Health Promotion Services
Healthy Lifestyles
Injury Prevention
Maternal Child Health
Comprehensive Perinatal Health Service Program
POSTPONE Train Pregnancy/Prevention
STD Community Intervention
Nutrition Services
Nutrition Network
Project Lean
Supplemental Food Program for
Pregnant, Infants, and Children (WIC)
HIV/AIDS Prevention, Outreach, High-Risk
Immunization Coordination

Emergency Medical Services Agency
Kirk Schmitt
EMS Director
Bureau Chief

EMS Systems Administration
Advisory Committees
Medical Agency/Local EMS Plan
Medical Control
Medical Marijuana Cards
Certificate & Training Standards
Approval & Monitoring of Training Programs
Early Defibrillation
Emergency Medical Technician
First Responder
Paramedics Accreditation
Mobile Intensive Care Nurse
Mobile Intensive Care Unit
EMS Operations
Medical Communications Plan
Medical Response & Transportation
Ambulance Contract/Logistics
Special Event Coordinator/Union
Specialty Care Center Designation
Paramedic Base/Receiving Hospitals
Tracking of Hospital Ambulance Diversion

Quality Assurance & Data Collection
Data Collection and Analysis
Medical Treatment Protocols
Mainland County-Wide Quality Assurance Program
Public Information & Education
CPR
Complaint Investigation & Resolution
Emergency Medical Services Year
Medical Assessor
Medical Assessor
Coordination of Countywide

Disaster Planning
Regional Medical Disaster Planning
Training for First Responders
Automated External Defibrillation Courses
Countywide "First Responder" Training Program
CPR Courses
Emergency Medical Technician
Annual Assessment Reports
Annual Assessment Equipment Funding

Environmental Health Bureau
John Ramirez
Director of Environmental Health
Bureau Chief

Administration/Fiscal
Accounts Payable/Accounts Receivable
Budgets
Business Technology Initiatives
Complaints
Construction & Software Maintenance
Inventory
Purchasing, Equipment & Supplies
Software Training
Revenue Vehicle Fleet Maintenance
Consumer Health Protection Services
Agricultural Field Tolerant Inspection
Childhood Lead Poisoning Prevention
Employee Housing Inspection
Food Complaint Investigation
Food Safety
General Sanitation
Institutions of Mental Disease
Public Swimming Pools/Spa Inspections
Recreational/Beach Water Quality Inspection
Retail Food Facility Inspection
Smoking Pollution Control
Storm Water Pollution Control
Vector Control
Drinking Water Protection Services
Cross Connection Control
Chloramine Disinfection
Collaborative Aquifer Protection
Desalination Treatment Facility Inspection

Drinking Water Source Assessment
Local Small W/S Sampling & Inspection
LPA Small W/S Sampling & Inspection
State Small W/S Sampling & Inspection
Water Reuse
Well Water Construction, Repair & Maintenance Inspection
Hazardous Materials Management
Asbestos
Accidental Release Prevention
Emergency Response
Hazardous Waste Generator
Hazardous Material Management
Monitoring Wastewater Discharges
Outreach & Education
Site Mitigation
Remediation & Above Storage Tanks
Recycling & Resource Recovery
Central Coast & Recycling Market
Development Zone
Commercial Waste Reduction
Outreach & Education
Residential Recycling

Refuse Collection Franchise Administration
Used Oil & Filter Recycling
Body & Tire Management Services
Body & Tire Recycling & Operator Inspection
Illegal Dumping Enforcement
Liquid Waste Hauler Inspection
Medical Waste Generator
Solid Waste Facility Inspection
Solid Waste Vehicle Inspection
Waste Inspection
Environmental Health Review Services
Building Permit Reviews
General Plan & Regional Planning
Greenville Regional Treatment
Onsite Wastewater Treatment
Systems Permitting
Planning Project Reviews
Subdivision & Lot-Line Adjustment
Reviews
Waste Water Treatment Reclamation
& Nitrate Monitoring
Winey Waste Water Disposal

Animal Services
Aggressive Animal Response
Bite Investigation
Complaint Investigation
Community Education
Nuisance/Dangerous
Stray Animal Dog/Cat Pickup
Shelter Program
Adoption
Animal Behavioral Education & Community Classes
Licensing
Owner Returns
Quarantine Services
Stray Animal Shelters
Volunteer Program
Shelter/Dog/Cat
Dog & Cat Spays and Neuters

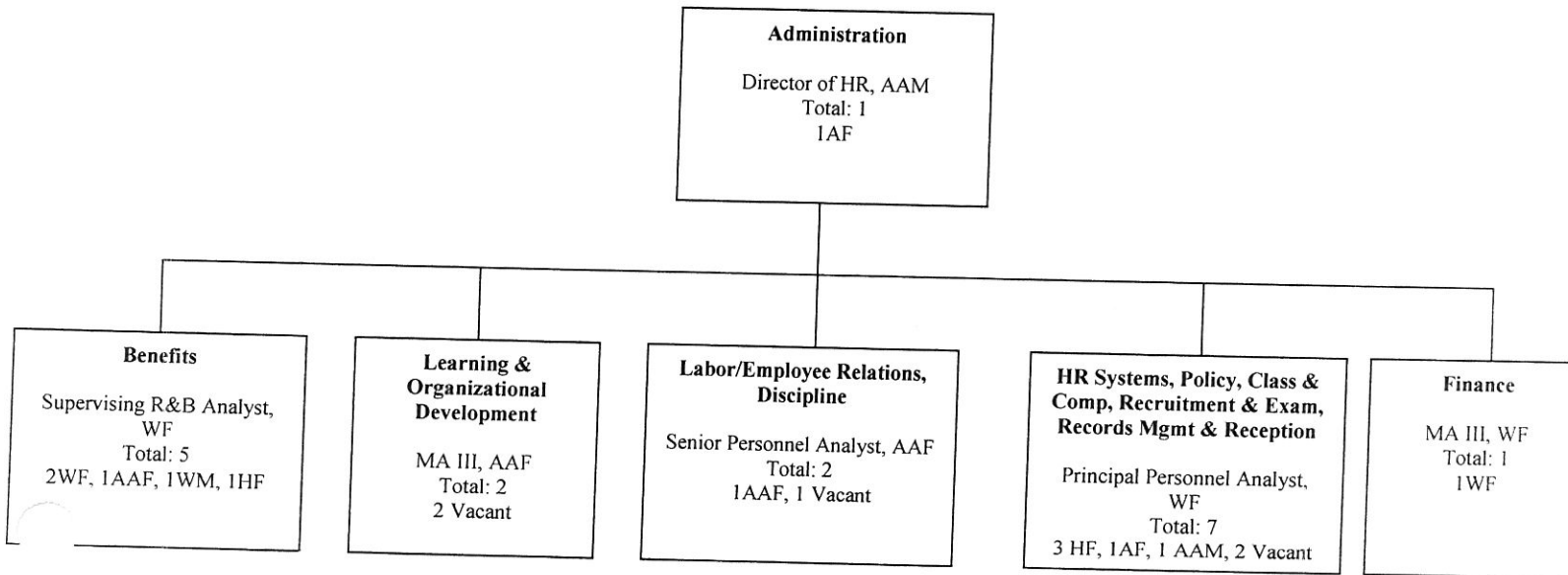
Human Resources
Dianne Dismore
HR Manager
Bureau Chief

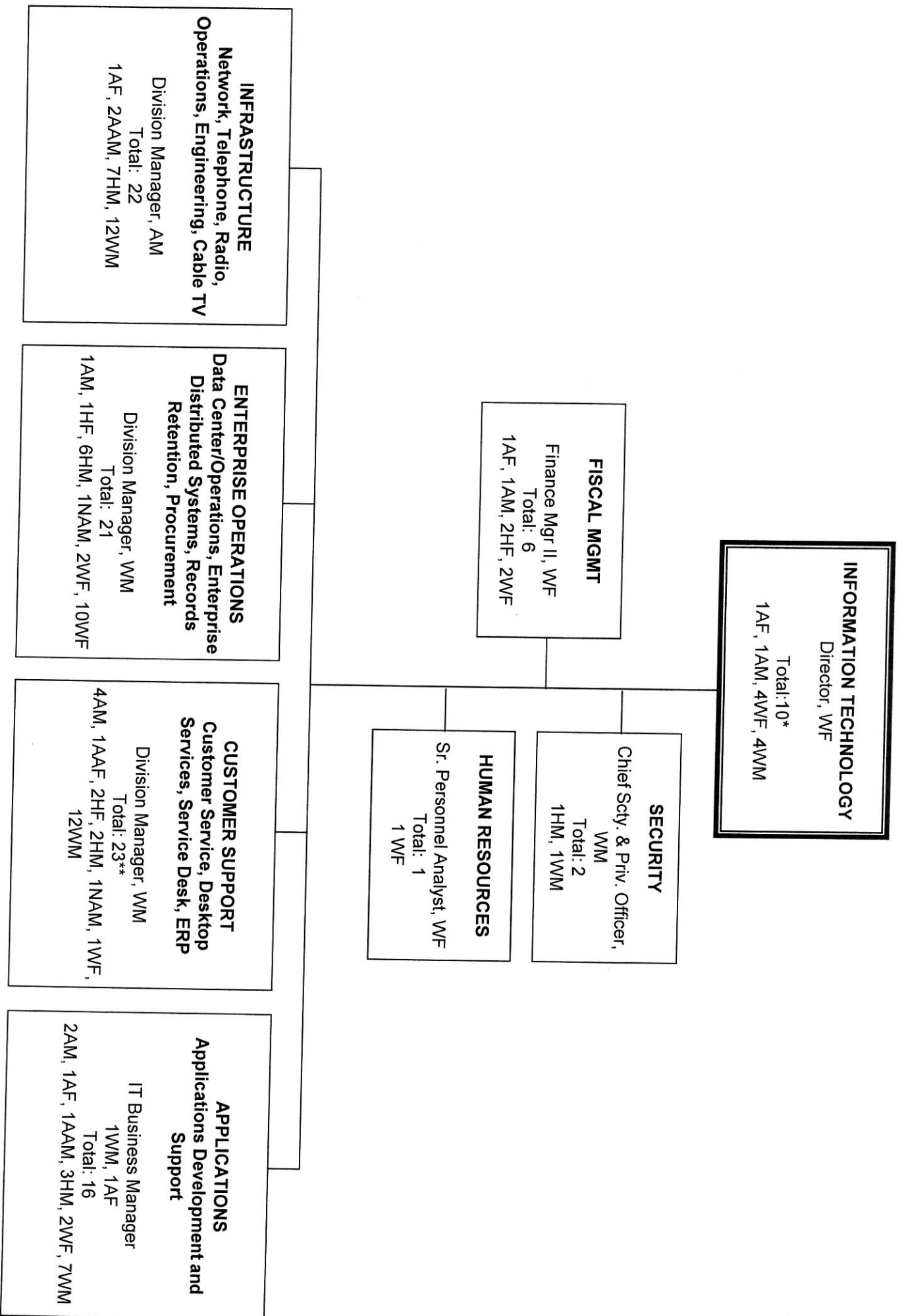
American with Disabilities Act
Bids Administration
Classification & Control
Compensation
Compliance
DRE/EEOC
Employee Orientation
Employee Relations
HR Policies & Procedures
Labor Memoranda of Understanding
Non-Discrimination
Payroll/Job Overtime
Performance Evaluations
Personnel Action Forms
Recruitment Action Forms
Recruitment Reports
Management
Salary Coordination
Training & Development
Worker's Compensation
Worker's Compensation Files Coordinator

Public Administrator/
Public Guardian
Chief Deputy Public
Guardian
Bureau Chief

Consejeros/as
Decent estate
• Administration
• Investigation
Information and Referral
Investigation
LPS Conservatorships
Probate
Public Administrator
Public Representative
Payer

County of Monterey Department of Human Resources
Organizational Profile
January, 2014

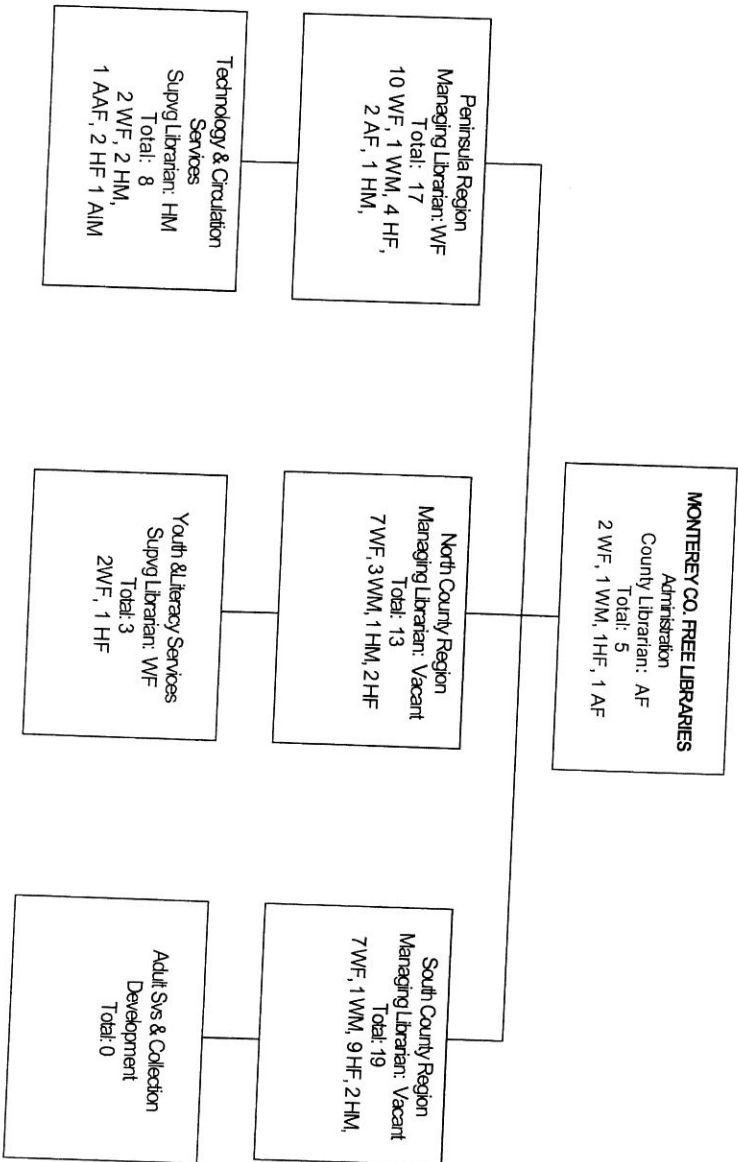




*Total includes Director

**Total includes Management Specialist XL

MONTEREY COUNTY FREE LIBRARIES
 Total Department Employees: 71 (6 Vacant = 65)



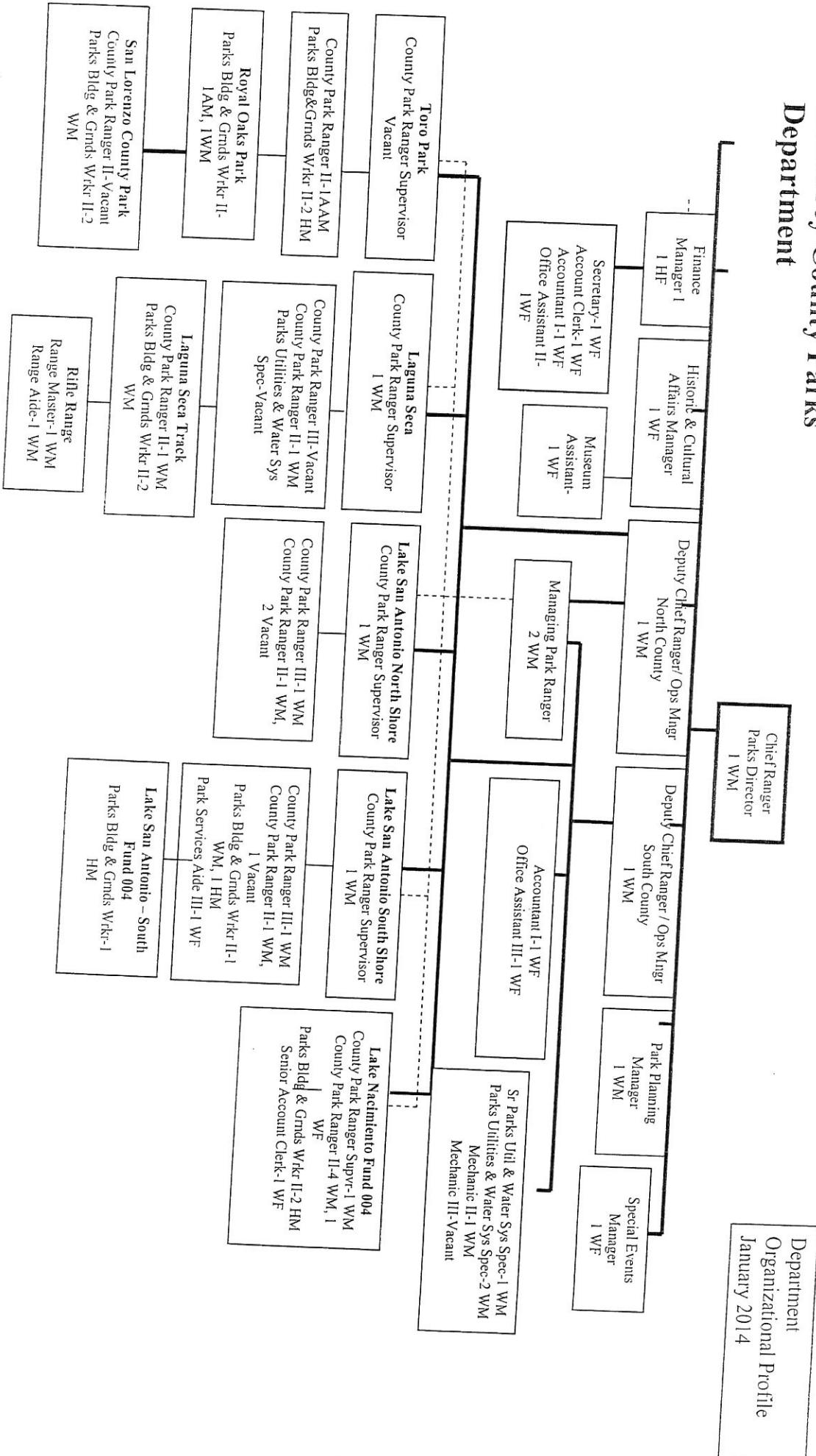
A=Asian, W=White, H=Hispanic, AA=African American
 M=Male, F=Female

**NATIVIDAD MEDICAL CENTER
ORGANIZATION PROFILE**

NMC CEO 1WM ADMINISTRATION SUPPORT TOTAL 3 1AF, 2HF
--

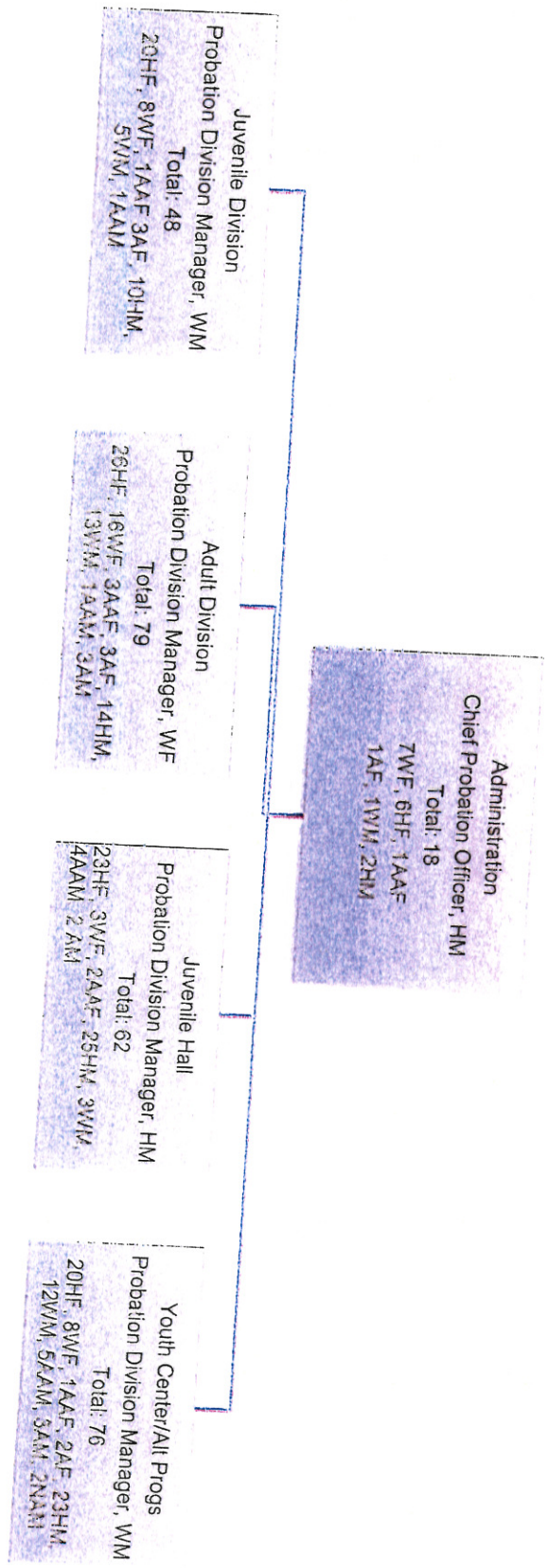
CHIEF NURSING OFFICER	CHIEF MEDICAL OFFICER	CHIEF FINANCIAL OFFICER	CHIEF INFORMATION OFFICER	ASSISTANT ADMINISTRATOR- OPERATIONS & SUPPORT	ASSISTANT ADMINISTRATOR- COMMUNITY & ORG. RELATIONS	HUMAN RESOURCES ADMINISTRATOR
VACANT	1WM	1AM	VACANT	1WF	1WF	1BF
INTENSIVE CARE UNIT TOTAL 27 7AF, 7HF, 4WF, 6AM, 3WM	PHYSICIANS TOTAL 28 1HF, 2WF, 1AF, 6WF, 6AM, 2HM, 8WM, 1UM, 1BM	PURCHASING & MATERIAL MANAGEMENT TOTAL 9 1HF, 2AM, 4HM, 2WM	COMMUNICATIONS TOTAL 7 5HF, 2HM	DIETARY & CLINICAL NUTRITION SUPERVISOR TOTAL 27 7AF, 13HF, 1UF, 3WF, 1AM, 2HM		HUMAN RESOURCES TOTAL 12 1AF, 1BF, 4HF, 5WF, 1AM
NEONATAL INTENSIVE CARE UNIT TOTAL 25 7AF, 5HF, 10WF, 1UF, 2AM,	FAMILY PRACTICE RESIDENCY TOTAL 33 4AF, 4HF, 3UF, 9WF, 1AM, 5HM, 7WM,	ACCOUNTING & PAYROLL TOTAL 5 2AF, 2HF, 1HM	INFORMATION SYSTEMS TOTAL 9 2HF, 1WF, 1BM, 3HM, 2WM	ENVIRONMENTAL SERVICES TOTAL 48 3AF, 1BF, 22HF, 1WF, 4AM, 3BM, 12HM, 1UF, 1UM		EMPLOYEE HEALTH TOTAL 1 1WF
MEDICAL SURGICAL UNIT TOTAL 64 28AF, 3BF, 17HF, 7WF, 6AM, 1BM, 2HM	PHARMACY TOTAL 23 3AF, 3BF, 9HF, 1WF, 3AM, 2HM, 2WM	PATIENT ACCOUNTING TOTAL 21 16HF, 4WF, 1WM	HEALTH INFORMATION MANAGEMENT TOTAL 27 1AF, 4BF, 14HF, 1AIF, 5WF, 1BM, 1HM	ENGINEERING & SAFETY TOTAL 17 1AF, 1AIF, 1AM, 8HM, 6WM		RECORDS & RETENTION TOTAL 1 1HF
PEDIATRIC UNIT TOTAL 11 3AF, 3HF, 5WF	NATIVIDAD MEDICAL GROUP TOTAL 5 5HF	PHYSICIAN BILLING TOTAL 4 4HF		LABORATORY TOTAL 34 17AF, 1BF, 5HF, 1AIF, 8WF, 2HM		
PHYSICIANIC UNIT TOTAL 21 1BF, 6HF, 11WF, 1BM, 1HM, 1WM	NIDO CLINIC TOTAL 6 1BF, 5HF	ADMITTING & REGISTRATION TOTAL 22 19HF, 3HM		DIAGNOSTIC IMAGING TOTAL 26 6HF, 9WF, 1AF, 1AIF, 1AM, 3HM, 5WM		
MATERNAL INFANT & LACTATION/NINOS CLINICS TOTAL 56 22AF, 3BF, 14HF, 16WF, 1UF	SPECIALTY CLINIC TOTAL 23 3AF, 12HF, 4WF, 2BM, 1HM, 1WM	MANAGED CARE/FINANCIAL COUNSELING TOTAL 12 8HF, 3WF, 1WM		THERAPY SERVICES TOTAL 13 5WF, 1HF, 1AM, 1HM, 1WM, 1UM, 3UF		
ACUTE REHABILITATION UNIT TOTAL 26 13AF, 2BF, 4HF, 4WF, 2AM, 1HM	INTERPRETER SERVICES TOTAL 2 1HF, 1HM	DECISION SUPPORT TOTAL 1 1WM				
EMERGENCY ROOM TOTAL 56 3AF, 1BF, 18HF, 20WF, 1UF, 5AM, 1BM, 3HM, 4WM,	MEDICAL STAFF/QUALITY TOTAL 15 2AF, 2HF, 8WF, 1HM, 2WM	CASE MANAGEMENT/SOCIAL SERVICES TOTAL 9 2HF, 1WM, 4AF, 1WF, 1UF				
LABOR & DELIVERY TOTAL 54 9AF, 2BF, 25HF, 17WF, 1HM	DIABETIC CLINIC TOTAL 2 2HF					
SURGERY & RECOVERY TOTAL 11 3AF, 1BF, 3HF, 2WF, 1AM, 1HM						
OUTPATIENT SURGERY/ENDOSCOPY TOTAL 14 2AF, 6HF, 4WF, 1UF, 1HM						
CENTRAL STERILE TOTAL 4 1AF, 1HF, 1BM, 1HM						
NURSING ADMIN TOTAL 7 2AF, 4WF, 1WM						
NURSING EDUCATION/TRAINING TOTAL 5 2HF, 1WF, 1HM, 1WM						
CARDIOPULMONARY SERVICES TOTAL 19 5HF, 5WF, 5HM, 4WM						
BARIATRIC SERVICES TOTAL 6 2AF, 2HF, 2WM						

Monterey County Parks Department

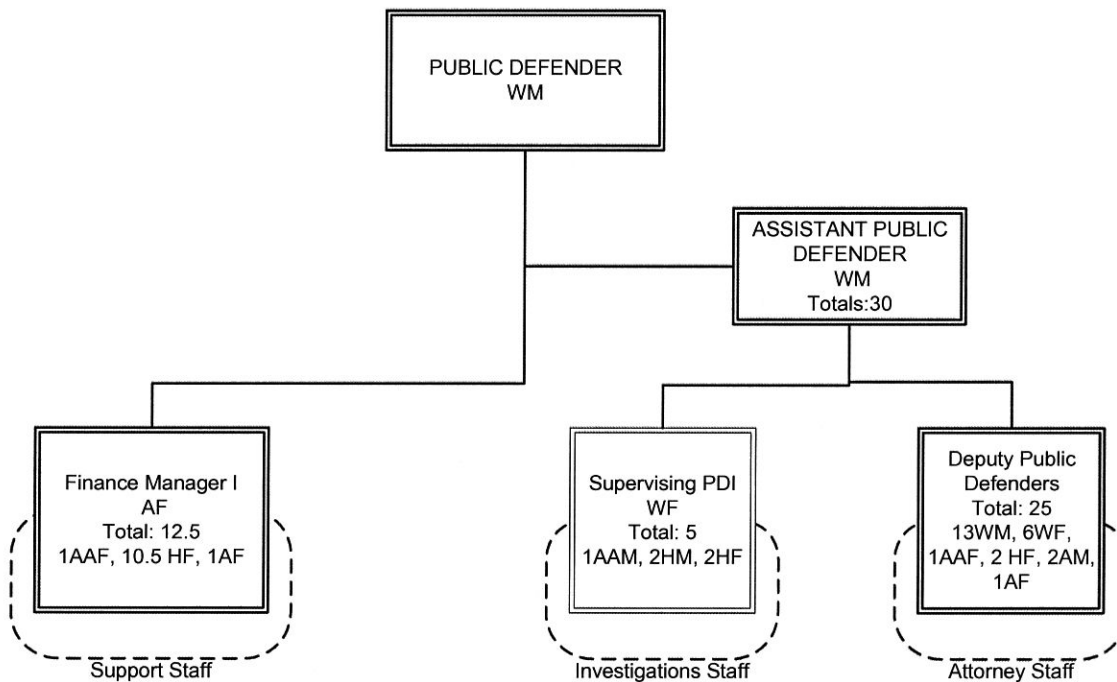


Department
Organizational Profile
January 2014

Probation Department



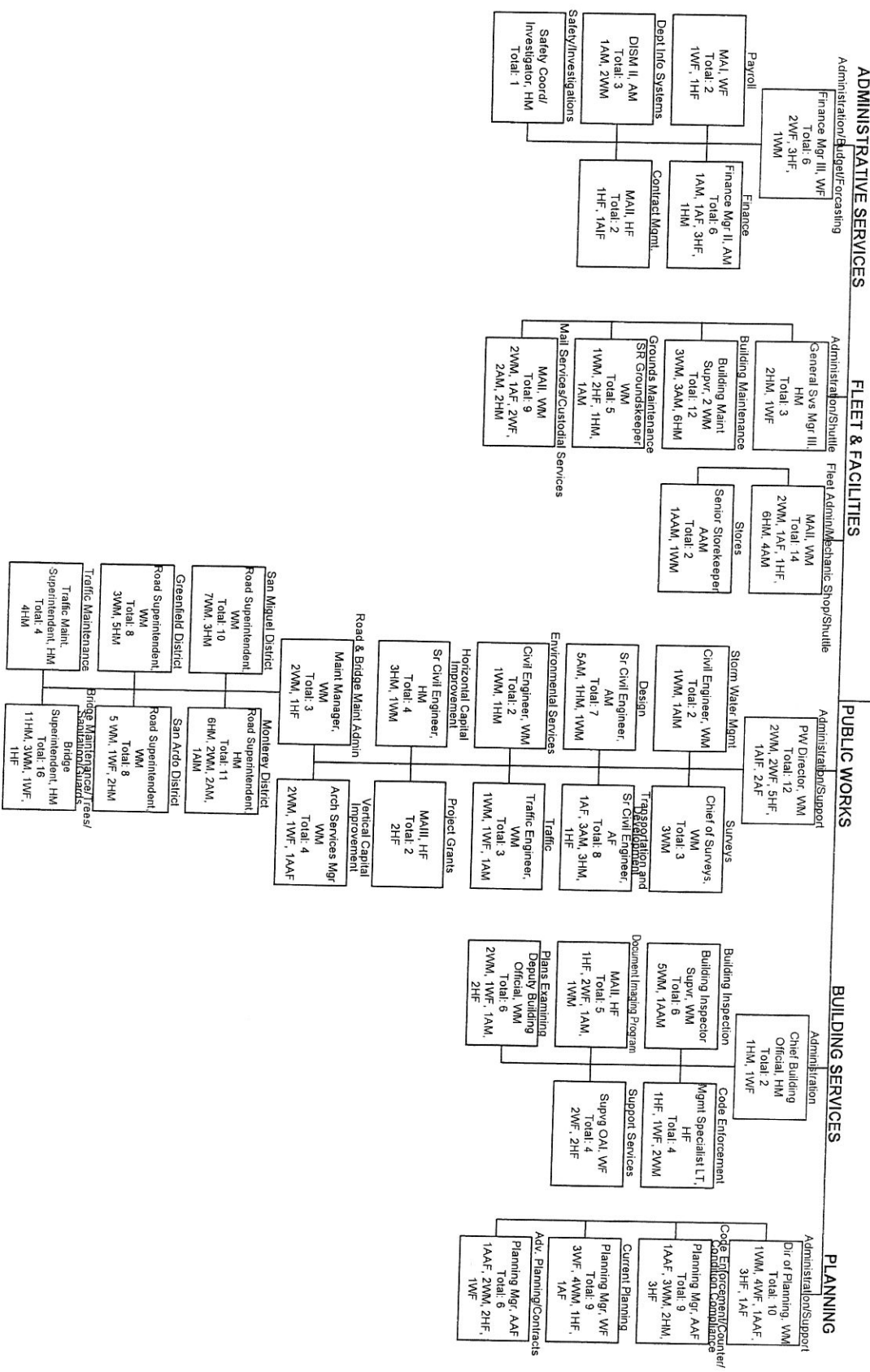
PUBLIC DEFENDER'S
OFFICE
December 2013



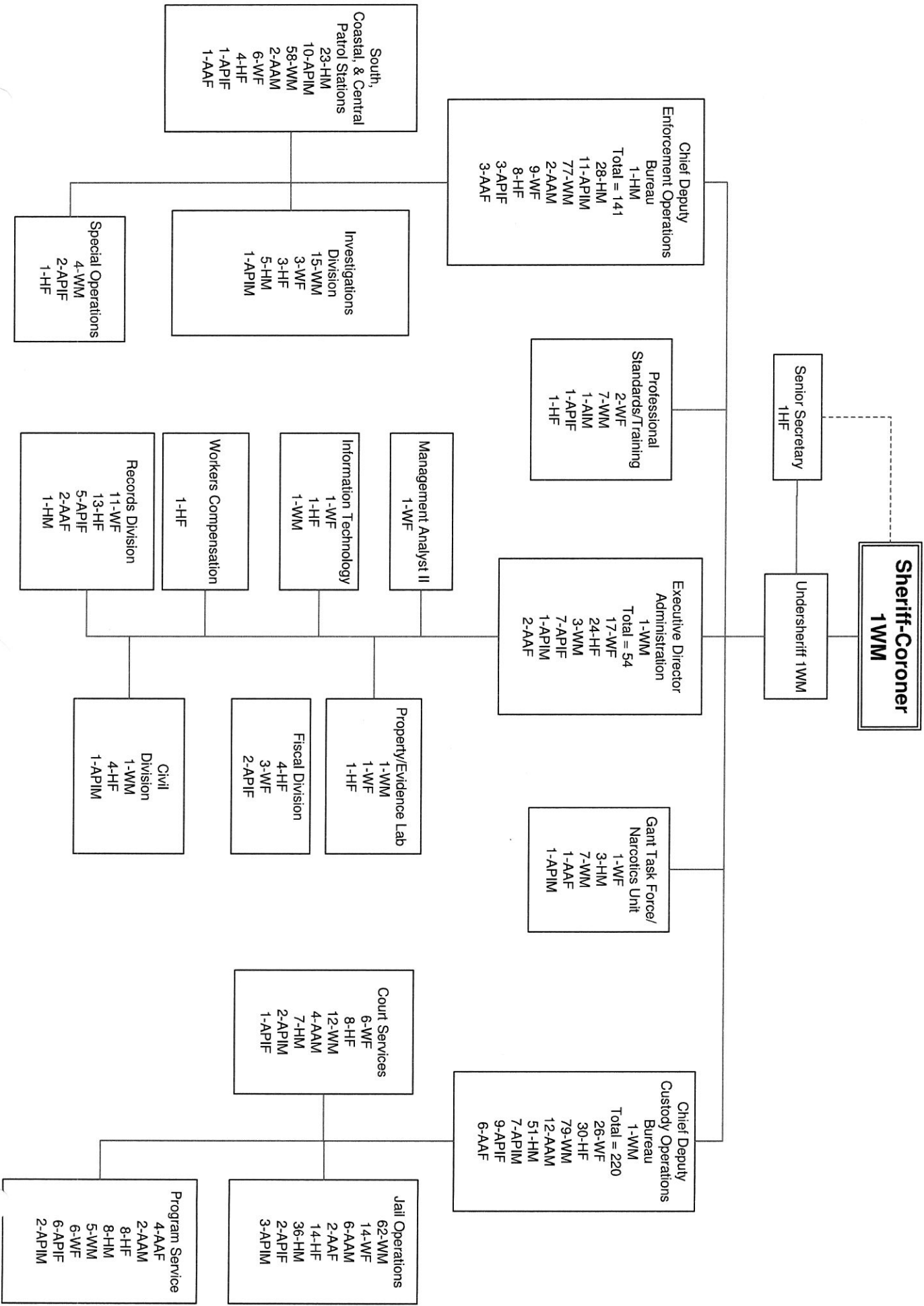
F = Female
M = Male
A = Asian
AA = African American
Fil = Filipino
H = Hispanic
W = White

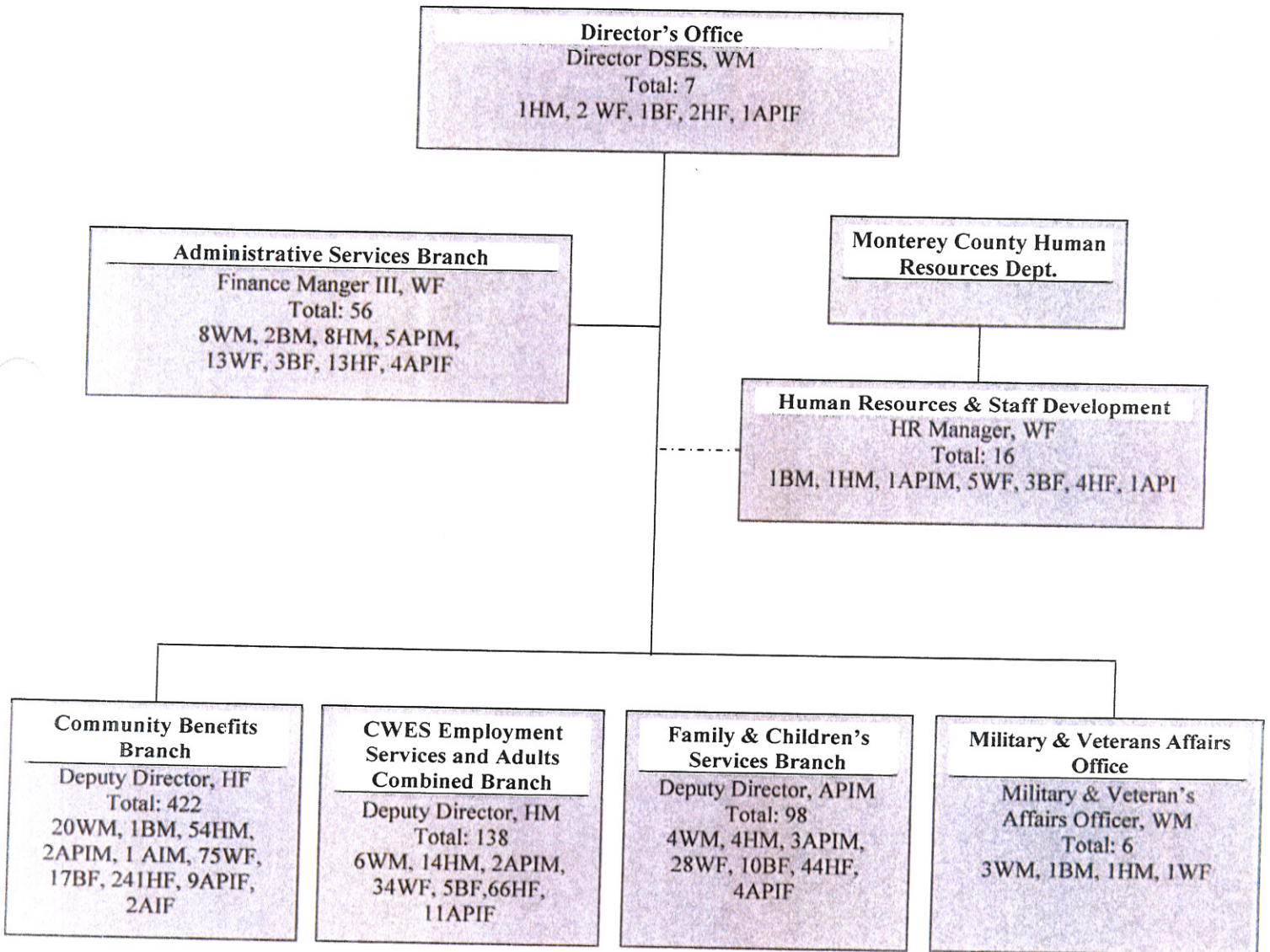
MONTEREY COUNTY RESOURCE MANAGEMENT AGENCY

RMA ADMINISTRATION

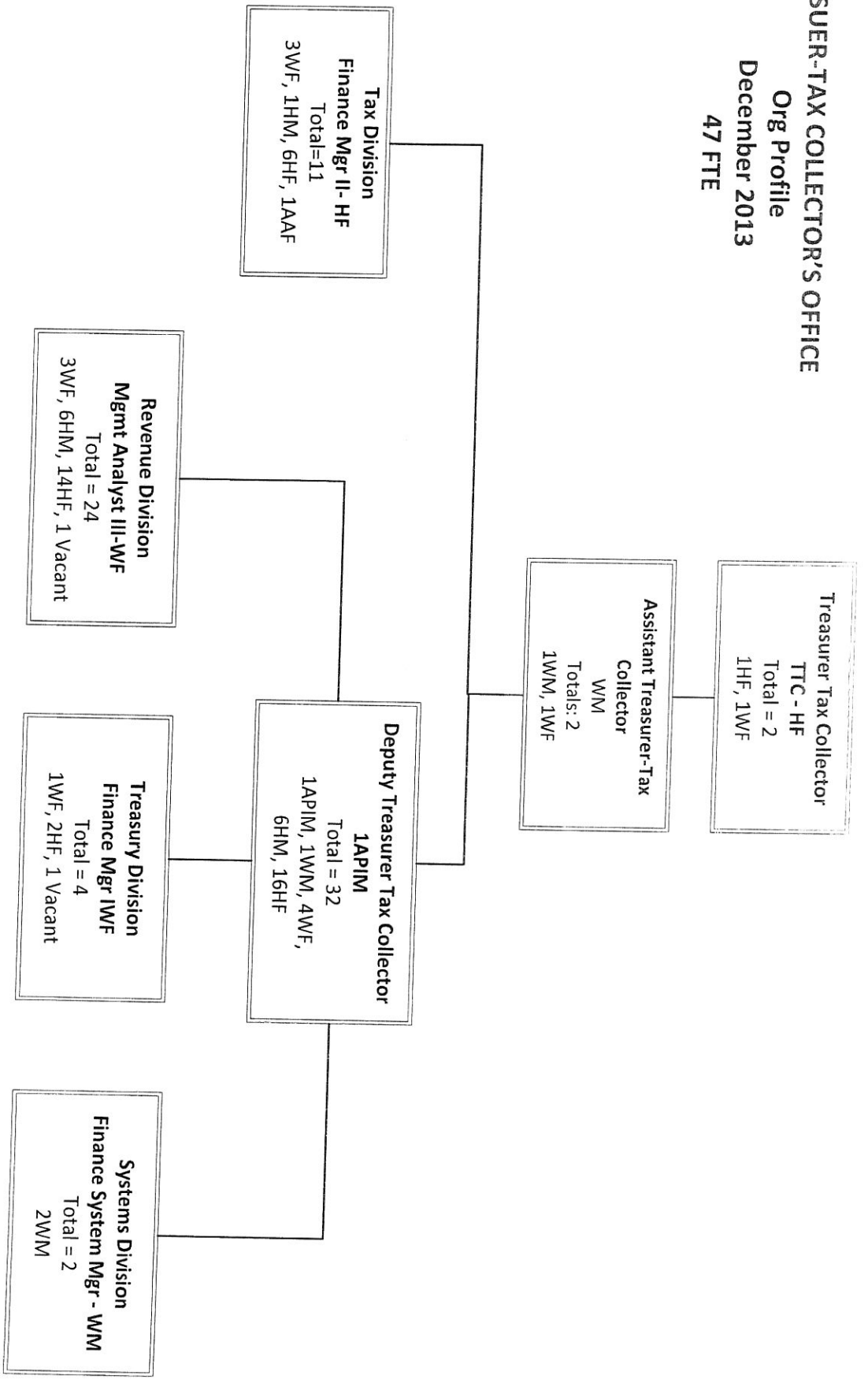


SHERIFF'S OFFICE





TREASURER-TAX COLLECTOR'S OFFICE
Org Profile
December 2013
47 FTE



M – Male F – Female

AA - African American; H – Hispanic; API – Asian/Pacific Islander;

W - White other than Hispanic; AI – American Indian/Alaskan Native

Monterey County Water Resources Agency

General Manager, WM

Clerk to Board
Administrative Services Manager, AAF
2.5 WF
Total = 2.5

Division Chief
Operation and Maintenance
Division, WM
11 WM, 4 HM, .5 APIM, 1 WF
Total = 16.5

Division Chief
Water Resources
Management, WM
4 WF, 8 WM,
1 APIM, 1 HF, 2 HM
Total = 16

Finance
Manager, HF
1 HM, 1.5 WM,
1.5 WF
Total = 4