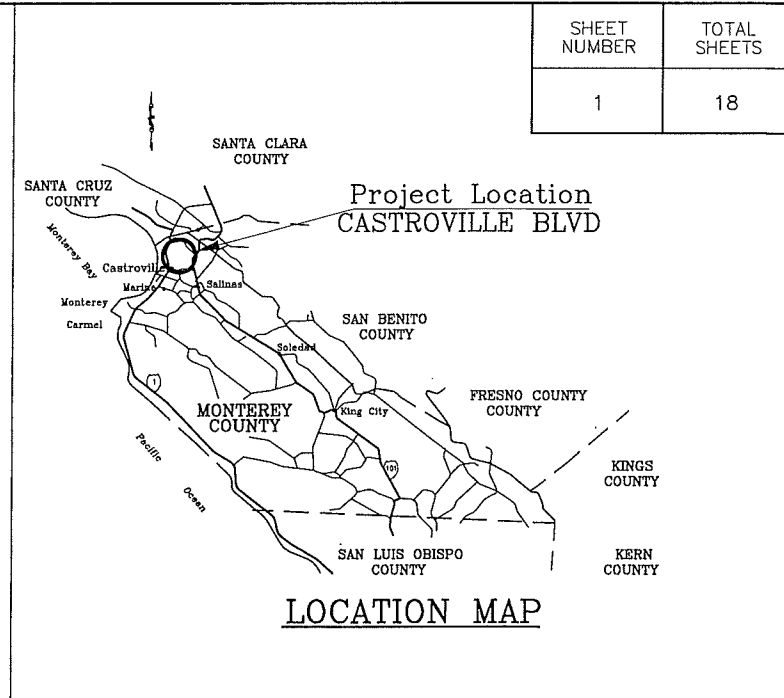


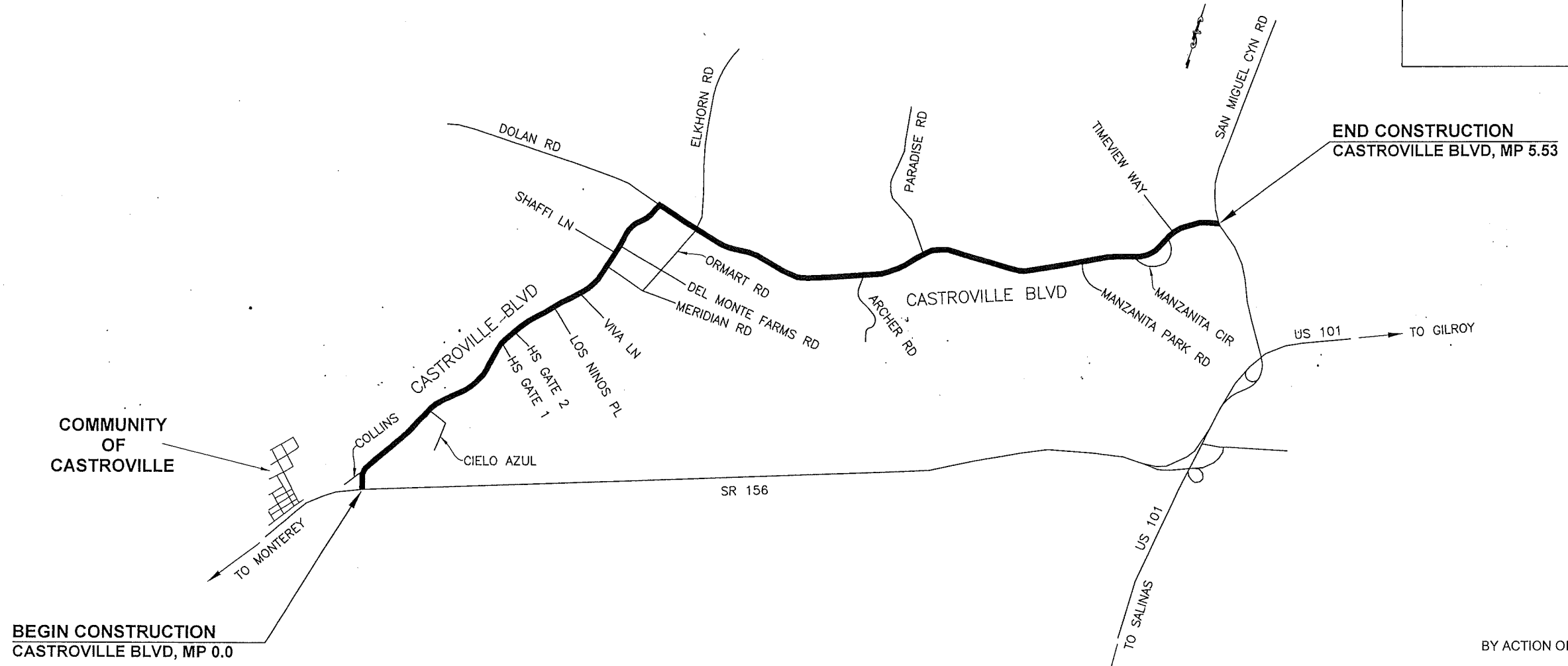
SHEET NUMBER	TOTAL SHEETS
1	18

COUNTY OF MONTEREY
 STATE OF CALIFORNIA
 DEPARTMENT OF PUBLIC WORKS
**PROJECT PLANS FOR CONSTRUCTION OF
 CASTROVILLE BOULEVARD PAVEMENT DELINEATION**
 NEAR COMMUNITY OF CASTROVILLE FROM STATE ROUTE 156 TO SAN MIGUEL CANYON ROAD
 PROJECT NO. 13-142765
 STATE PROJECT NO. 0513000081L-N
 FEDERAL AID PROJECT NO. HRRRL-5944(114)
 TO BE SUPPLEMENTED BY CALTRANS STANDARD SPECIFICATIONS AND STANDARD PLANS 2010 EDITION



INDEX OF SHEETS

1	TITLE SHEET
2	CONSTRUCTION DETAILS
3	CONSTRUCTION AREA SIGNS
4 - 16	PAVEMENT DELINEATION PLAN
17 - 18	QUANTITIES

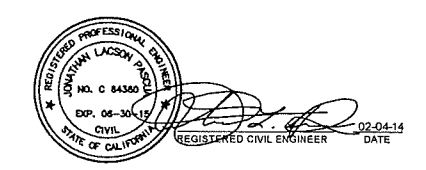


BY ACTION OF THE BOARD OF SUPERVISORS
 APPROVED ON _____
 PER BOARD ORDER No. _____ PUBLIC WORKS

 ROBERT K. MURDOCH, P.E. DATE
 DIRECTOR OF PUBLIC WORKS

THE CONTRACTOR SHALL POSSESS THE CLASS (OR CLASSES) OF LICENSE AS SPECIFIED IN THE "NOTICE TO BIDDERS."

SUBMITTED BY, JONATHAN L. PASCUA, P.E.	
DESIGN BY, ISABELO DELA MERCED	CHKD BY, J.P.
DRAWN BY, FELIPE MORALES/I, DELA MERCED	CHKD BY, J.P.
SPECIFICATIONS WRITTEN BY, ISABELO DELA MERCED	CHKD BY, J.P.
APPROVAL RECOMMENDED BY, PAUL H. GREENWAY, P.E. ASSISTANT DIRECTOR OF PUBLIC WORKS	

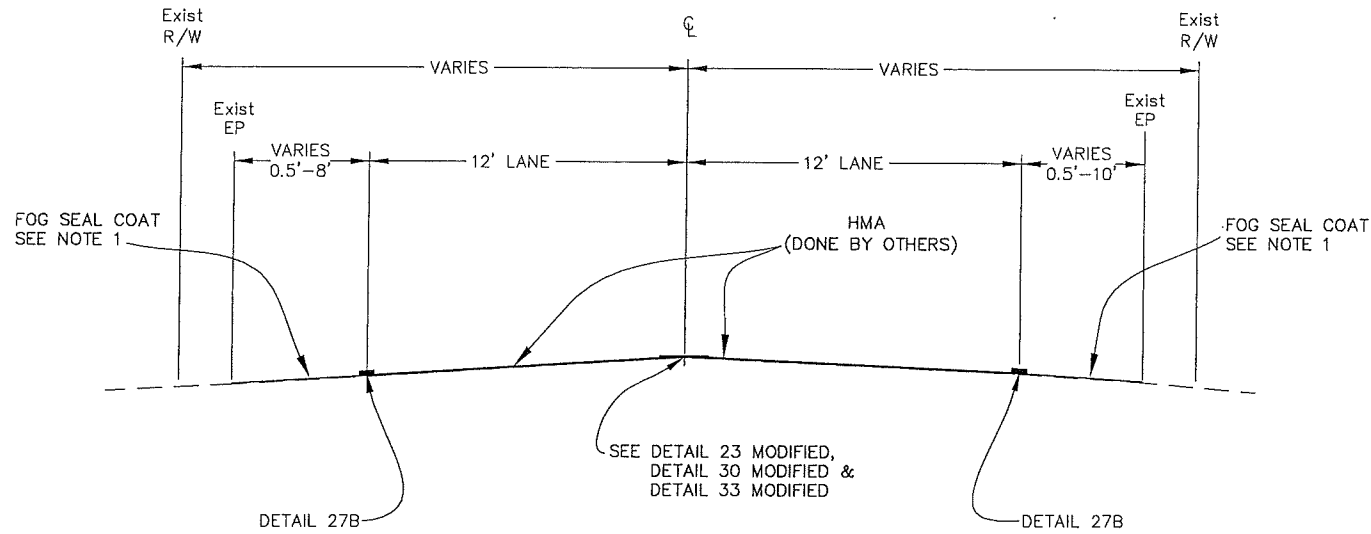


NO.	DATE	REVISION	APPROVED



COUNTY OF MONTEREY
 RESOURCE MANAGEMENT AGENCY
 DEPARTMENT OF PUBLIC WORKS
 DESIGN SECTION
 168 WEST ALISAL STREET, 2nd FLOOR
 SALINAS, CALIFORNIA 93901
 (831)755-4800/FAX (831)755-4958

CASTROVILLE BOULEVARD PAVEMENT DELINEATION PROJECT PROJECT NO. 14-142765		
TITLE SHEET		
DATE 02/03/14	RELATIVE BORDER SCALE: IN INCHES 0 1 2 3	SHEET TS-1
SCALE NTS	VIEW TS-1	

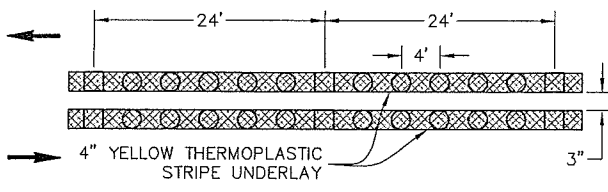


TYPICAL SECTION

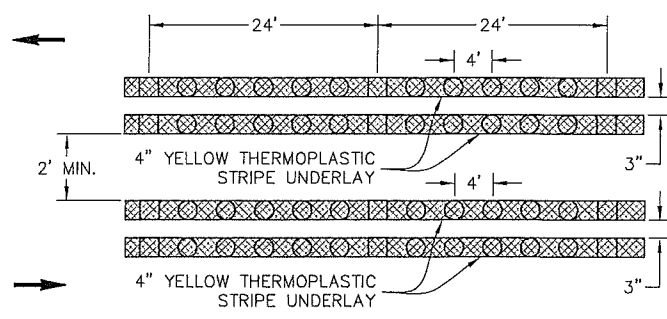
NOTE 1. APPLY FOG SEAL COAT TO SHOULDER AREAS, MEDIAN STRIPED ISLANDS, TURN LANES AND OTHER AREAS THAT DID NOT RECEIVE NEW HMA PAVING AS DIRECTED BY THE ENGINEER.
 2. COORDINATE WITH THE PAVING CONTRACTOR AND OTHER ENTITIES FOR ANY WORK PERFORM UNDER THIS CONTRACT TO AVOID DELAYS.

LEGEND:

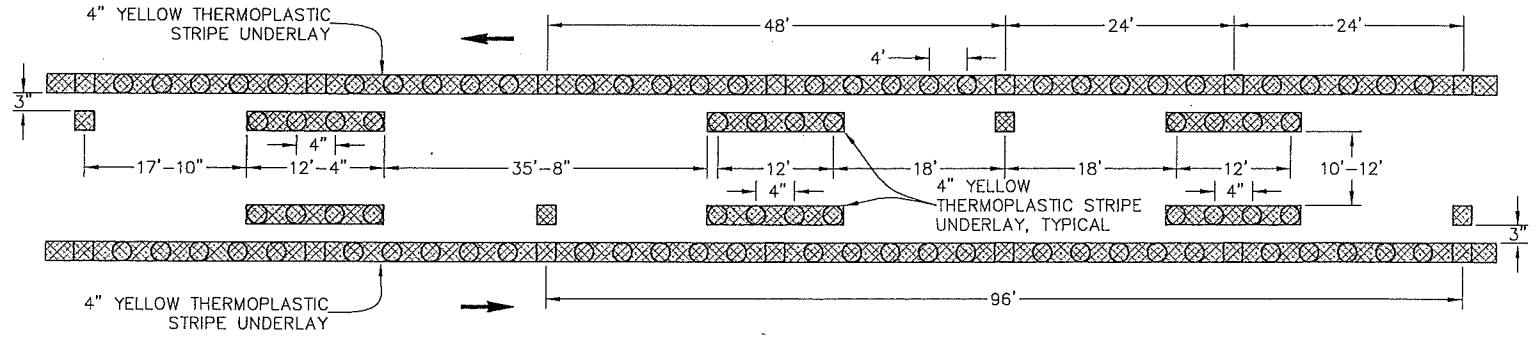
- 4" WHITE
- 4" YELLOW
- DIRECTION OF TRAVEL
- TYPE AY YELLOW NON-REFLECTIVE
- TYPE D TWO-WAY YELLOW RETROREFLECTIVE



23 CENTERLINE - NO PASSING
 DETAIL 23 MODIFIED NTS



30 MEDIAN ISLAND
 DETAIL 30 MODIFIED NTS



33 TWO-WAY LEFT TURN LANES
 DETAIL 33 MODIFIED NTS

SUBMITTED BY, JONATHAN L. PASCUA, P.E.
 DESIGN BY, ISABELO DELA MERCED
 DRAWN BY, FELIPE MORALES/I. DELA MERCED
 SPECIFICATIONS WRITTEN BY, ISABELO DELA MERCED
 APPROVAL RECOMMENDED BY, PAUL H. GREENWAY, P.E.
 CHKD BY, J.P.
 CHKD BY, IDM
 CHKD BY, J.P.
 ASSISTANT DIRECTOR OF PUBLIC WORKS



NO.	DATE	REVISION	APPROVED
△			
△			
△			
△			
△			

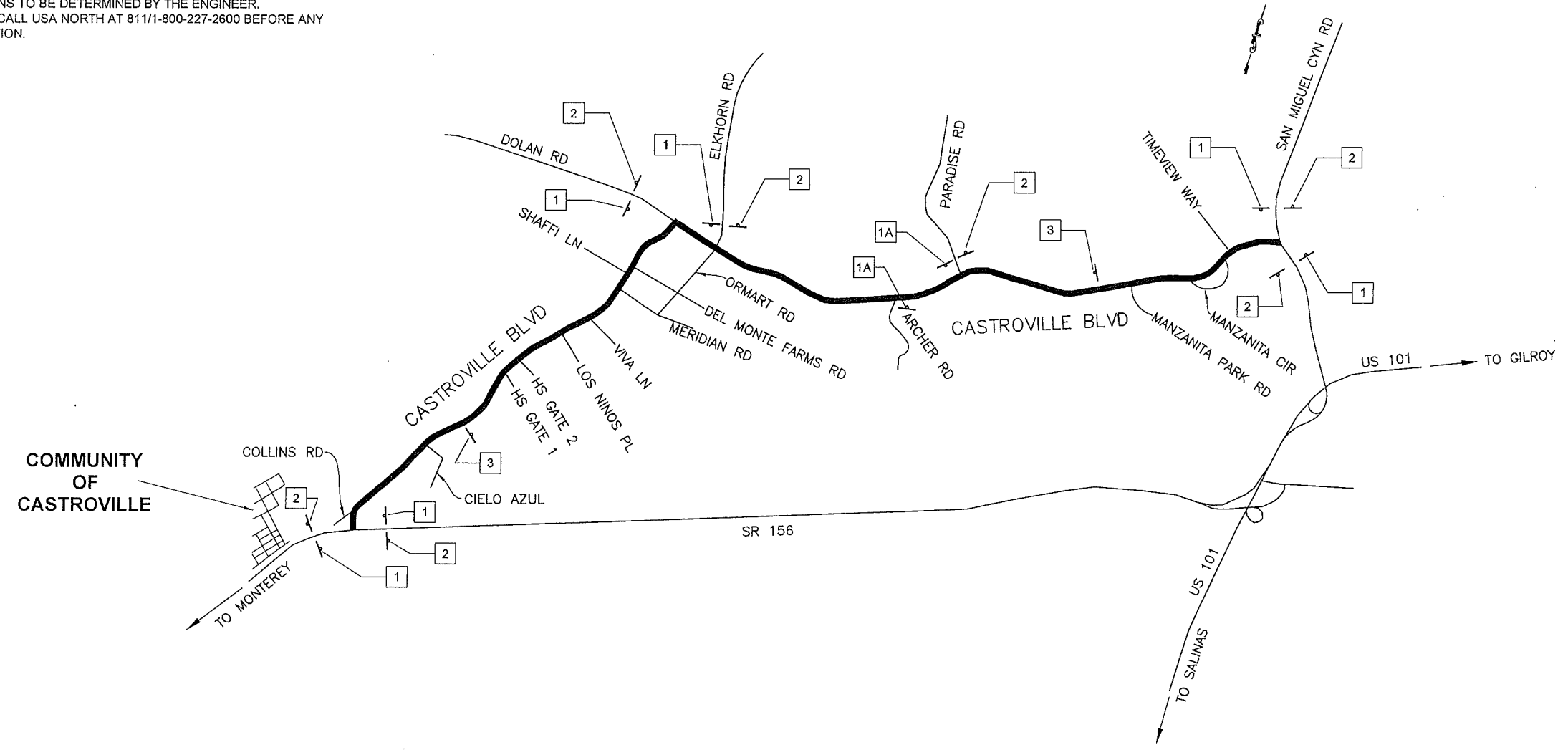


COUNTY OF MONTEREY
 RESOURCE MANAGEMENT AGENCY
 DEPARTMENT OF PUBLIC WORKS
 DESIGN SECTION
 168 WEST ALISAL STREET, 2nd FLOOR
 SALINAS, CALIFORNIA 93901
 (831)755-4800/FAX (831)755-4958

CASTROVILLE BOULEVARD PAVEMENT DELINEATION PROJECT PROJECT NO. 14-142765		
CONSTRUCTION DETAILS		
DATE 02/03/14	RELATIVE BORDER SCALE: IN INCHES 0 1 2 3	SHEET C-1
SCALE NTS	VIEW C-1	

CONSTRUCTION AREA SIGNS (STATIONARY MOUNTED)					
SIGN NO.	SIGN CODE	SIGN MESSAGE	PANEL SIZE (in)	NO. OF POST AND SIZE	NO. OF SIGNS
1	W20-1	ROAD WORK AHEAD	48 X 48	2 - 4in X 4in	6
1A	W20-1	ROAD WORK AHEAD	36 X 36	1 - 4in X 4in	2
2	G20-2	END ROAD WORK	48 X 24	2 - 4in X 4in	7
3	G20-1	ROAD WORK NEXT 4 MILES	60 X 36	2 - 4in X 4in	2

- NOTES:
- THIS PLAN ACCURATE FOR CONSTRUCTION AREA SIGN WORK ONLY.
 - EXACT SIGN LOCATIONS TO BE DETERMINED BY THE ENGINEER.
 - CONTRACTOR SHALL CALL USA NORTH AT 811/1-800-227-2600 BEFORE ANY DIGGING OR EXCAVATION.



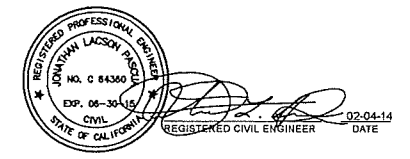
SUBMITTED BY, JONATHAN L. PASCUA, P.E.

DESIGN BY, ISABELO DELA MERCED CHKD BY, J.P.

DRAWN BY, FELIPE MORALES/I, DELA, MERCED. CHKD BY, J.P.

SPECIFICATIONS WRITTEN BY, ISABELO DELA MERCED CHKD BY, J.P.

APPROVAL RECOMMENDED BY, PAUL H., GREENWAY, P.E. ASSISTANT DIRECTOR OF PUBLIC WORKS



NO.	DATE	REVISION	APPROVED
▲			
▲			
▲			
▲			
▲			

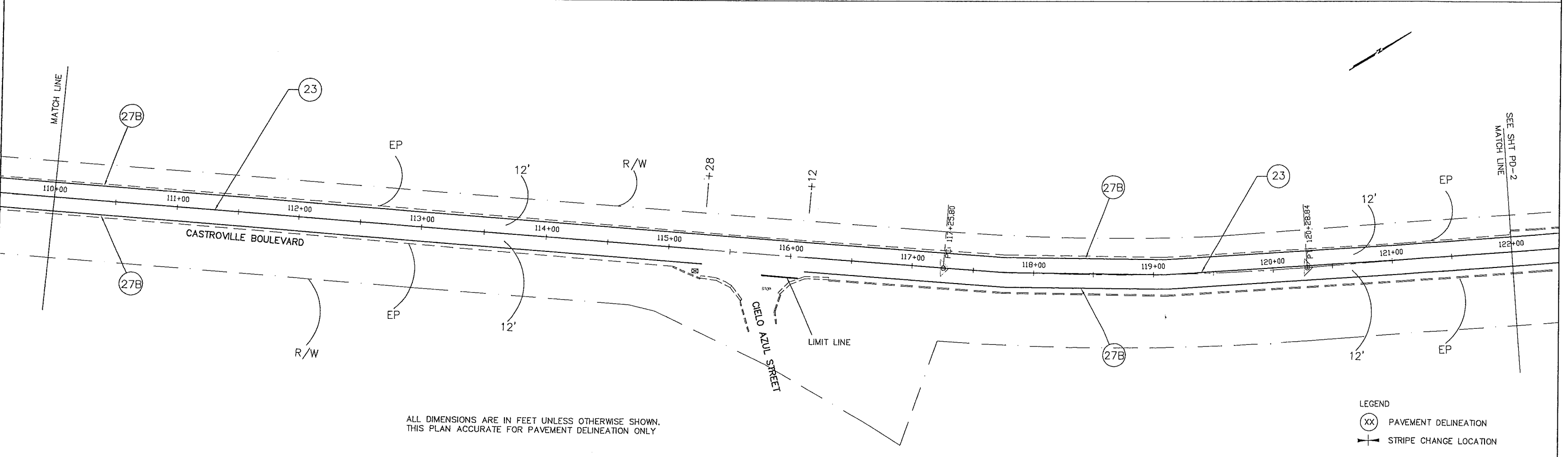
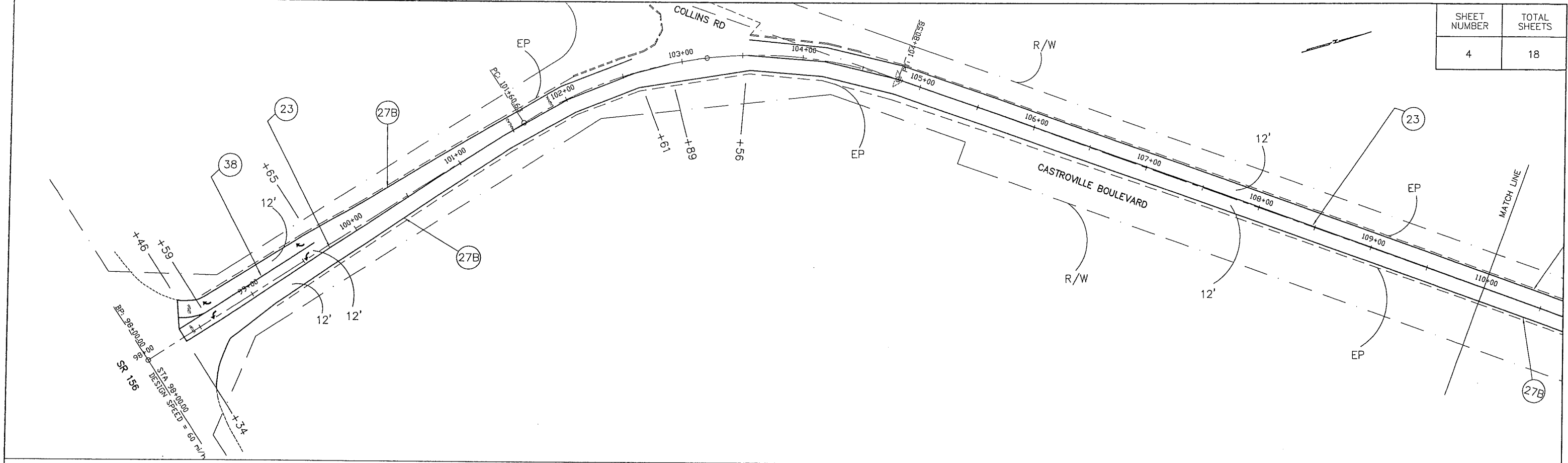


COUNTY OF MONTEREY
 RESOURCE MANAGEMENT AGENCY
 DEPARTMENT OF PUBLIC WORKS
 DESIGN SECTION
 168 WEST ALISAL STREET, 2nd FLOOR
 SALINAS, CALIFORNIA 93901
 (831)755-4800/FAX (831)755-4958

CASTROVILLE BOULEVARD
 PAVEMENT DELINEATION PROJECT
 PROJECT NO. 14-142765

CONSTRUCTION AREA SIGNS

DATE 02/03/14	RELATIVE BORDER SCALE: IN INCHES 0 1 2 3	SHEET CS-1
SCALE NTS	VIEW CS-1	



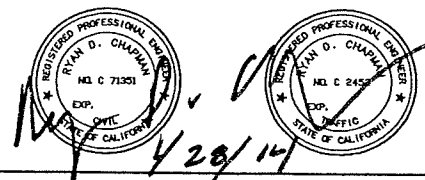
LEGEND
 (XX) PAVEMENT DELINEATION
 STRIPE CHANGE LOCATION

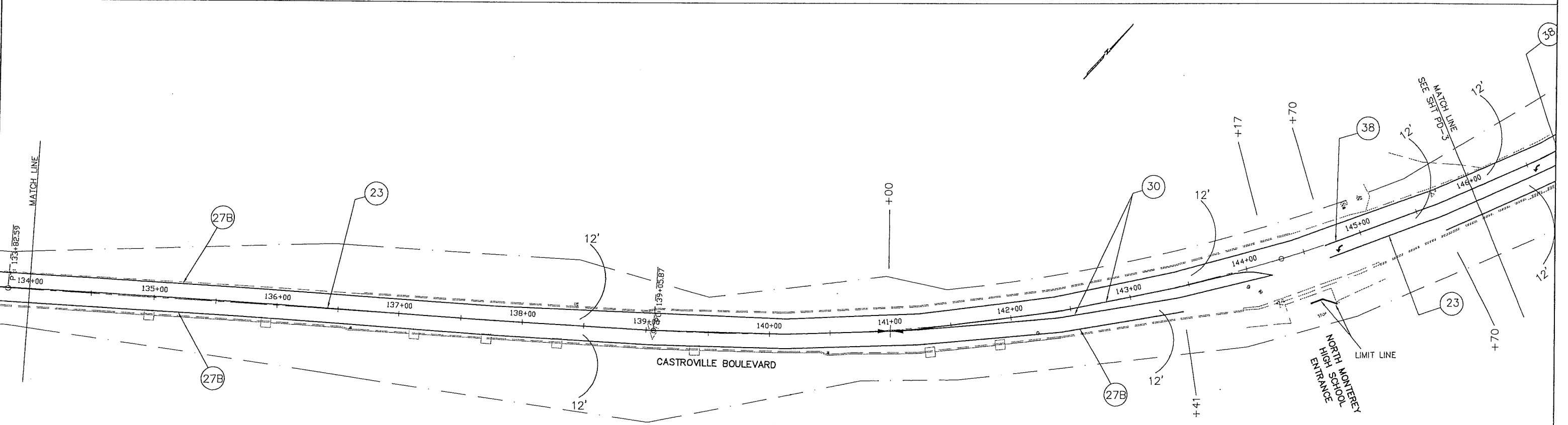
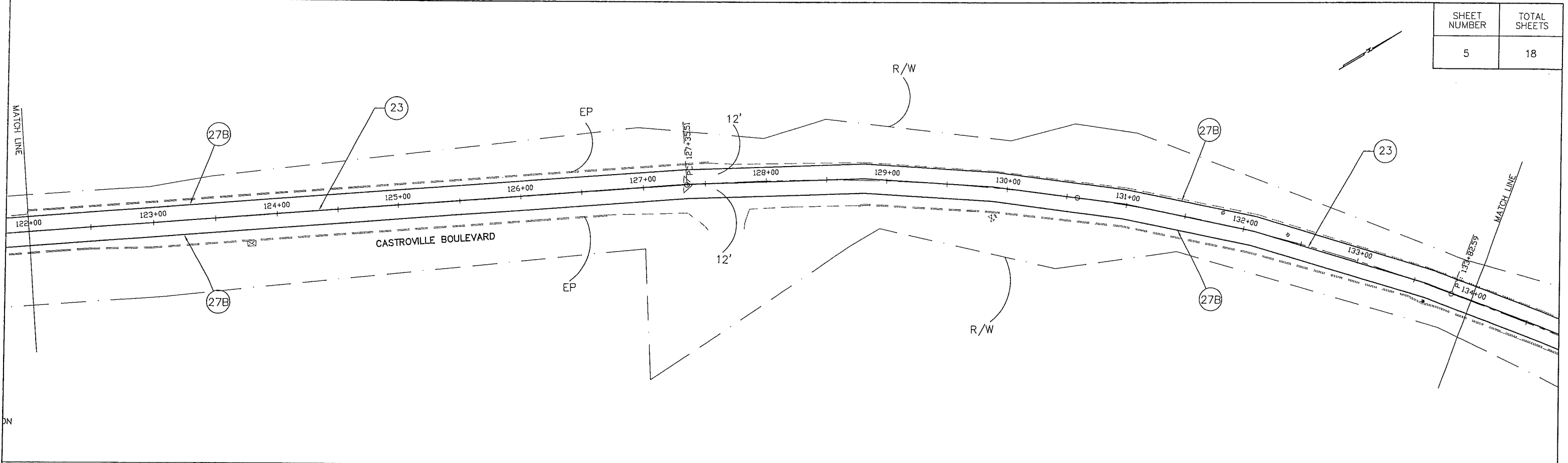
SUBMITTED BY JONATHAN L. PASCUA, P.E.
 DESIGN BY RYAN D. CHAPMAN, P.E., T.E. CHKD BY .R.C./J.P.
 DRAWN BY JESUS GUICO CHKD BY .R.C./J.P.
 SPECIFICATIONS WRITTEN BY ISABELO DELA MERCED CHKD BY .J.P.
 APPROVAL RECOMMENDED BY PAUL H. GREENWAY, P.E. ASSISTANT DIRECTOR OF PUBLIC WORKS

NO.	DATE	REVISION	APPROVED
▲			
▲			
▲			
▲			

COUNTY OF MONTEREY
 RESOURCE MANAGEMENT AGENCY
 DEPARTMENT OF PUBLIC WORKS
 DESIGN SECTION
 168 WEST ALISAL STREET, 2nd FLOOR
 SALINAS, CALIFORNIA 93901
 (831)755-4800/FAX (831)755-4958

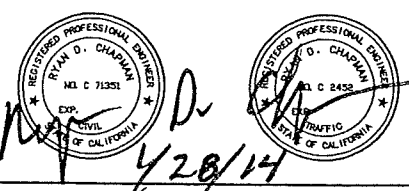
CASTROVILLE BOULEVARD
 PAVEMENT DELINEATION PROJECT
 PROJECT NO. 14-142765
PAVEMENT DELINEATION PLAN
 DATE 12/19/13 RELATIVE BORDER SCALE: IN INCHES
 SCALE 1"=40' SHEET PD-1





ALL DIMENSIONS ARE IN FEET UNLESS OTHERWISE SHOWN.
THIS PLAN ACCURATE FOR PAVEMENT DELINEATION ONLY

SUBMITTED BY: JONATHAN L. PASCUA, P.E.
 DESIGN BY: RYAN D. CHAPMAN, P.E., T.E. CHKD BY: .R.C./J.P.
 DRAWN BY: JESUS GUICO CHKD BY: .R.C./J.P.
 SPECIFICATIONS WRITTEN BY: ISABELO DELA MERCED CHKD BY: J.P.
 APPROVAL RECOMMENDED BY: PAUL H. GREENWAY, P.E., ASSISTANT DIRECTOR OF PUBLIC WORKS



NO.	DATE	REVISION	APPROVED
▲			
▲			
▲			
▲			

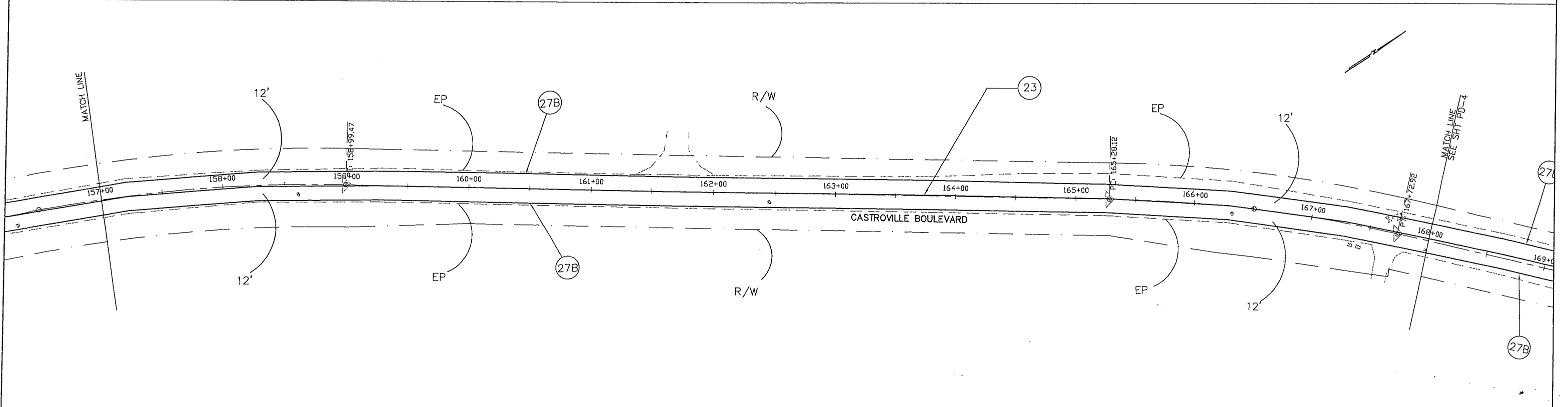
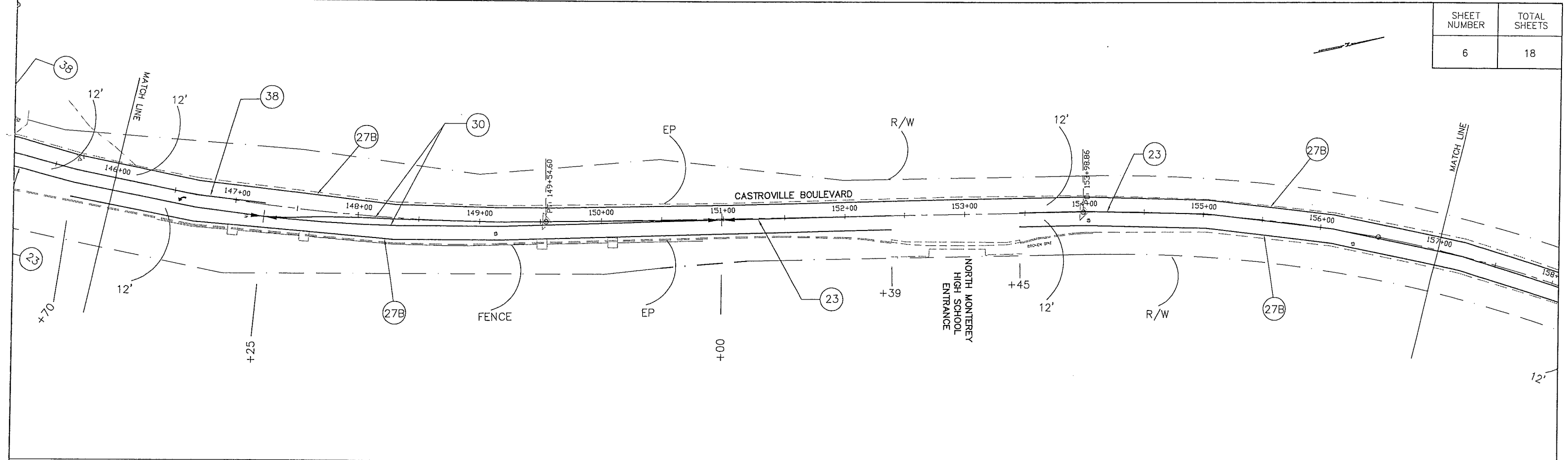


COUNTY OF MONTEREY
 RESOURCE MANAGEMENT AGENCY
 DEPARTMENT OF PUBLIC WORKS
 DESIGN SECTION
 168 WEST ALISAL STREET, 2nd FLOOR
 SALINAS, CALIFORNIA 93901
 (831)755-4800/FAX (831)755-4958

CASTROVILLE BOULEVARD
 PAVEMENT DELINEATION PROJECT
 PROJECT NO. 14-142765

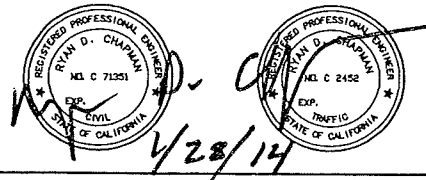
PAVEMENT DELINEATION PLAN

DATE 12/19/13	RELATIVE BORDER SCALE: IN INCHES 0 1 2 3	SHEET PD-2
SCALE 1"=40'	VIEW PD-2	



ALL DIMENSIONS ARE IN FEET UNLESS OTHERWISE SHOWN.
THIS PLAN ACCURATE FOR PAVEMENT DELINEATION ONLY

SUBMITTED BY, JONATHAN L. PASCUA, P.E.
 DESIGN BY, RYAN D. CHAPMAN, P.E., T.E. CHKD BY .R.C./J.P.
 DRAWN BY, JESUS GUICO CHKD BY .R.C./J.P.
 SPECIFICATIONS WRITTEN BY, ISABELO DELA MERCED CHKD BY .J.P.
 APPROVAL RECOMMENDED BY, PAUL H. GREENWAY, P.E. ASSISTANT DIRECTOR OF PUBLIC WORKS



NO.	DATE	REVISION	APPROVED
▲			
▲			
▲			
▲			

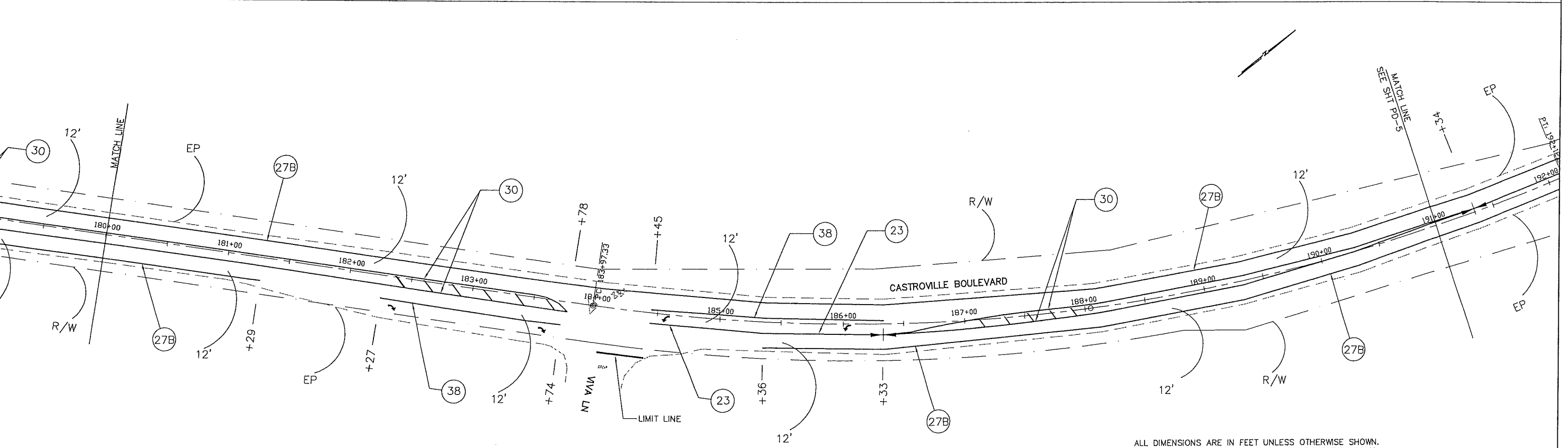
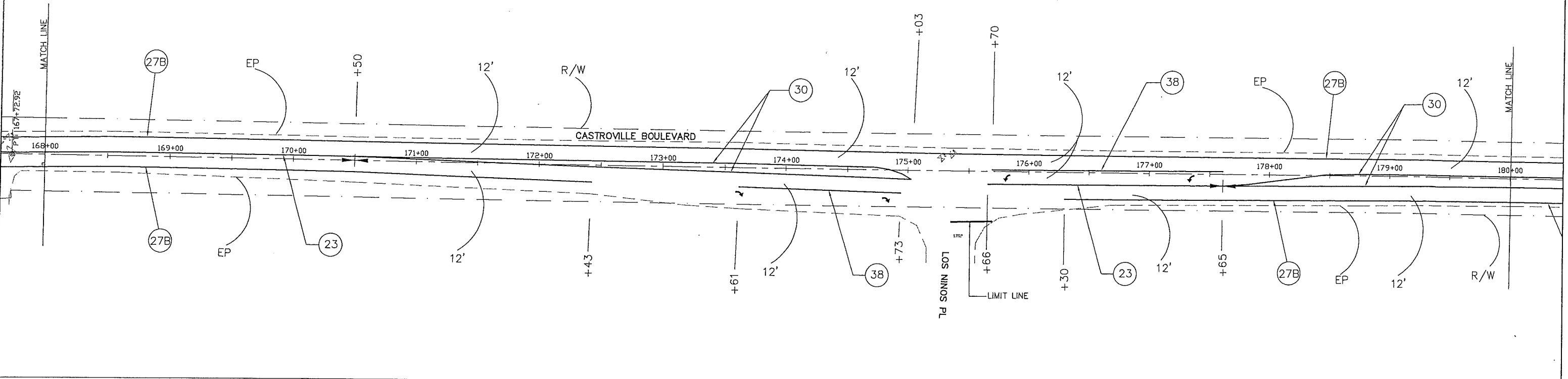


COUNTY OF MONTEREY
 RESOURCE MANAGEMENT AGENCY
 DEPARTMENT OF PUBLIC WORKS
 DESIGN SECTION
 168 WEST ALISAL STREET, 2nd FLOOR
 SALINAS, CALIFORNIA 93901
 (831)755-4800/FAX (831)755-4958

CASTROVILLE BOULEVARD
 PAVEMENT DELINEATION PROJECT
 PROJECT NO. 14-142765

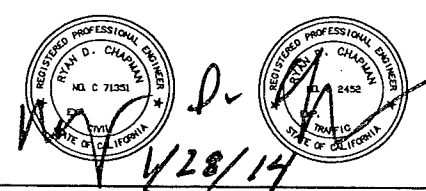
PAVEMENT DELINEATION PLAN

DATE 12/19/13	RELATIVE BORDER SCALE: IN INCHES 0 1 2 3	SHEET PD-3
SCALE 1"=40'	VIEW PD-3	



ALL DIMENSIONS ARE IN FEET UNLESS OTHERWISE SHOWN.
THIS PLAN ACCURATE FOR PAVEMENT DELINEATION ONLY

SUBMITTED BY, JONATHAN L. PASCUA, P.E.
 DESIGN BY, RYAN D. CHAPMAN, P.E., T.E. CHKD BY .R.C./J.P.
 DRAWN BY, JESUS GUICO CHKD BY .R.C./J.P.
 SPECIFICATIONS WRITTEN BY, ISABELO DELA MERCED CHKD BY .J.P.
 APPROVAL RECOMMENDED BY, PAUL H. GREENWAY, P.E. ASSISTANT DIRECTOR OF PUBLIC WORKS



NO.	DATE	REVISION	APPROVED
▲			
▲			
▲			
▲			

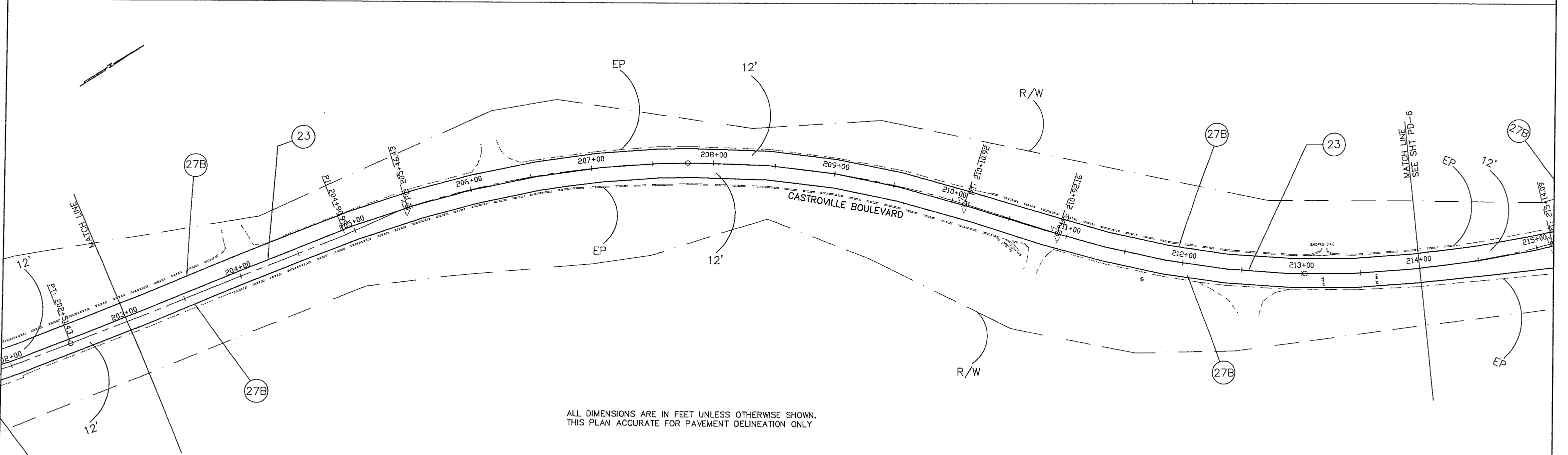
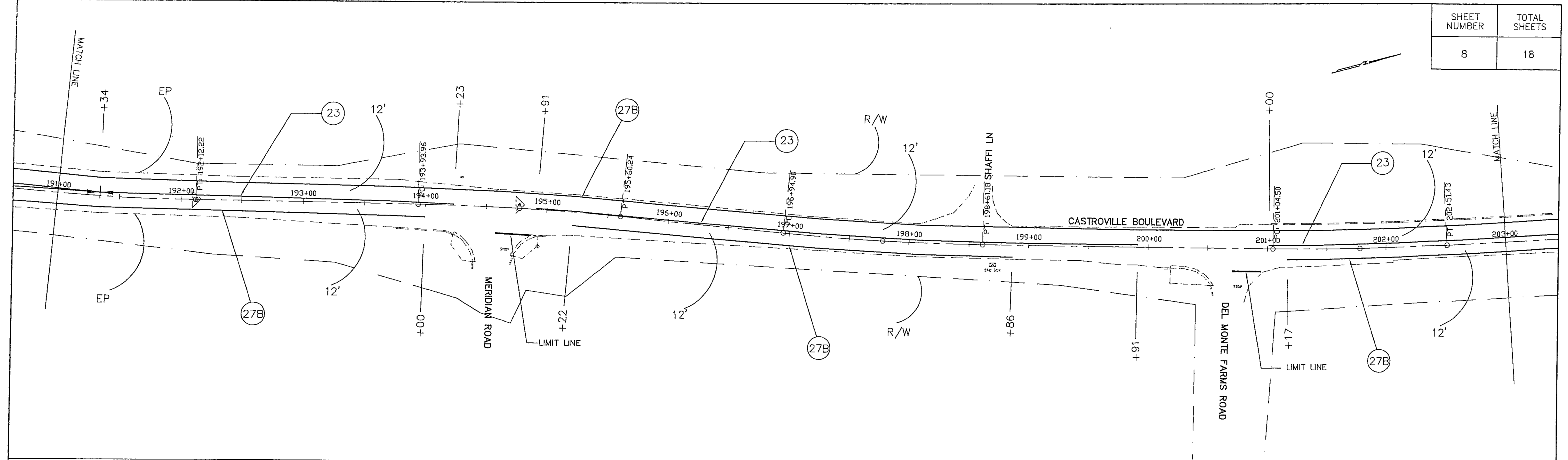


COUNTY OF MONTEREY
 RESOURCE MANAGEMENT AGENCY
 DEPARTMENT OF PUBLIC WORKS
 DESIGN SECTION
 168 WEST ALISAL STREET, 2nd FLOOR
 SALINAS, CALIFORNIA 93901
 (831)755-4800/FAX (831)755-4958

CASTROVILLE BOULEVARD
 PAVEMENT DELINEATION PROJECT
 PROJECT NO. 14-142765

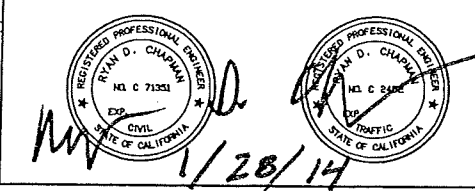
PAVEMENT DELINEATION PLAN

DATE 12/19/13	RELATIVE BORDER SCALE: IN INCHES 0 1 2 3	SHEET PD-4
SCALE 1"=40'	VIEW PD-4	



ALL DIMENSIONS ARE IN FEET UNLESS OTHERWISE SHOWN.
THIS PLAN ACCURATE FOR PAVEMENT DELINEATION ONLY

SUBMITTED BY, JONATHAN L. PASCUA, P.E.
 DESIGN BY, RYAN D. CHAPMAN, P.E./T.E. CHKD BY, R.C./J.P.
 DRAWN BY, JESUS GUICO CHKD BY, R.C./J.P.
 SPECIFICATIONS WRITTEN BY, ISABELO DELA MERCED CHKD BY, J.P.
 APPROVAL RECOMMENDED BY, PAUL H. GREENWAY, P.E.
ASSISTANT DIRECTOR OF PUBLIC WORKS



NO.	DATE	REVISION	APPROVED
▲			
▲			
▲			
▲			



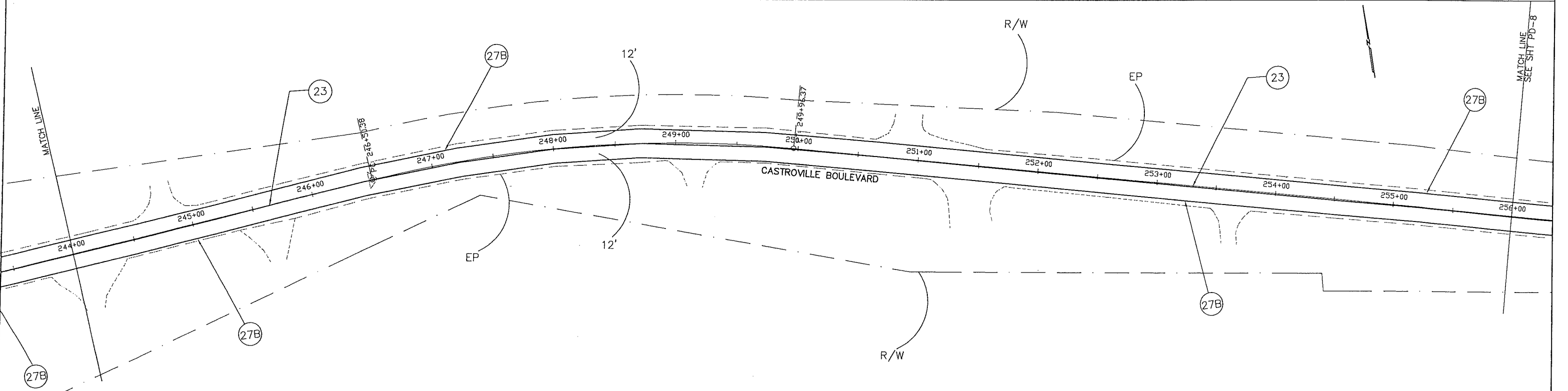
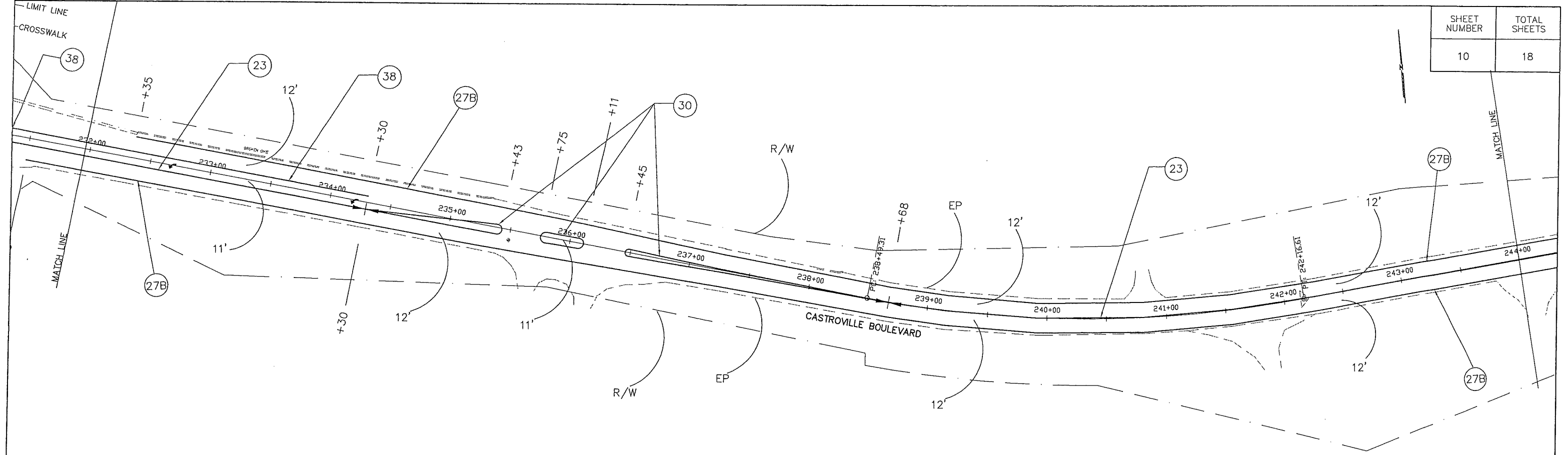
COUNTY OF MONTEREY
 RESOURCE MANAGEMENT AGENCY
 DEPARTMENT OF PUBLIC WORKS
 DESIGN SECTION
 168 WEST ALISAL STREET, 2nd FLOOR
 SALINAS, CALIFORNIA 93901
 (831)755-4800/FAX (831)755-4958

CASTROVILLE BOULEVARD
 PAVEMENT DELINEATION PROJECT
 PROJECT NO. 14-142765

PAVEMENT DELINEATION PLAN

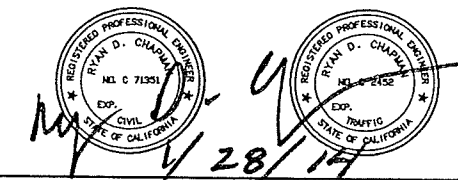
DATE 12/19/13	RELATIVE BORDER SCALE: IN INCHES 0 1 2 3	SHEET PD-5
SCALE 1" = 40'	VIEW PD-5	

SHEET NUMBER	TOTAL SHEETS
10	18



ALL DIMENSIONS ARE IN FEET UNLESS OTHERWISE SHOWN.
THIS PLAN ACCURATE FOR PAVEMENT DELINEATION ONLY

SUBMITTED BY, JONATHAN L. PASCUA, P.E.
 DESIGN BY, RYAN D. CHAPMAN, P.E., T.E. CHKD BY .R.C./J.P.
 DRAWN BY, JESUS GUICO CHKD BY .R.C./J.P.
 SPECIFICATIONS WRITTEN BY, ISABELO DELA MERCED CHKD BY .J.P.
 APPROVAL RECOMMENDED BY, PAUL H. GREENWAY, P.E. ASSISTANT DIRECTOR OF PUBLIC WORKS



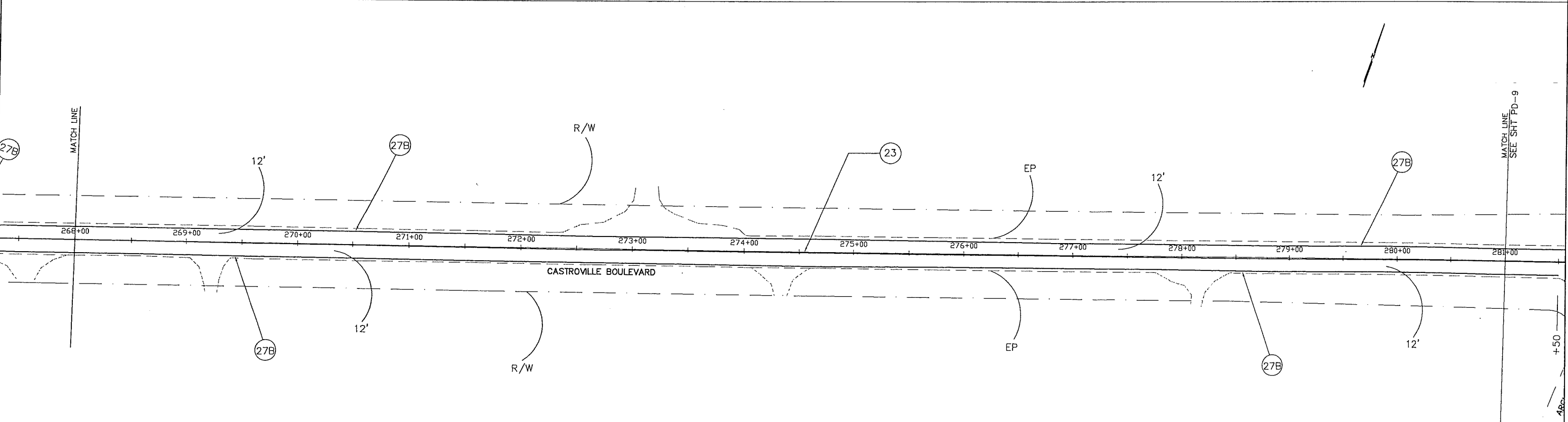
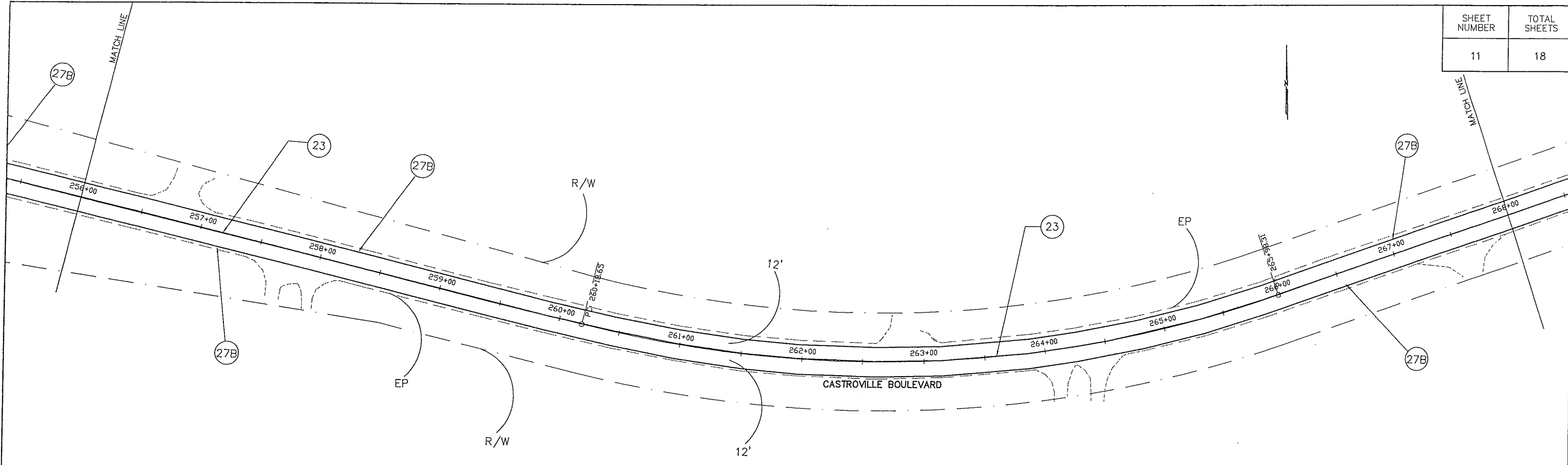
NO.	DATE	REVISION	APPROVED
▲			
▲			
▲			



COUNTY OF MONTEREY
 RESOURCE MANAGEMENT AGENCY
 DEPARTMENT OF PUBLIC WORKS
 DESIGN SECTION
 168 WEST ALISAL STREET, 2nd FLOOR
 SALINAS, CALIFORNIA 93901
 (831)755-4800/FAX (831)755-4958

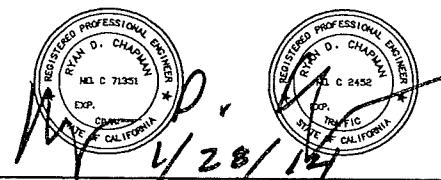
CASTROVILLE BOULEVARD
 PAVEMENT DELINEATION PROJECT
 PROJECT NO. 14-142765
PAVEMENT DELINEATION PLAN
 DATE 12/19/13 RELATIVE BORDER SCALE: IN INCHES
 SCALE 1" = 40' VIEW PD-7 SHEET PD-7

SHEET NUMBER	TOTAL SHEETS
11	18



ALL DIMENSIONS ARE IN FEET UNLESS OTHERWISE SHOWN.
THIS PLAN ACCURATE FOR PAVEMENT DELINEATION ONLY

SUBMITTED BY, JONATHAN L. PASCUA, P.E.
 DESIGN BY, RYAN D. CHAPMAN, P.E., T.E. CHKD BY .R.C./J.P.
 DRAWN BY, JESUS GUICO CHKD BY .R.C./J.P.
 SPECIFICATIONS WRITTEN BY, ISABELO DELA MERCED CHKD BY .J.P.
 APPROVAL RECOMMENDED BY, PAUL H. GREENWAY, P.E. ASSISTANT DIRECTOR OF PUBLIC WORKS



NO.	DATE	REVISION	APPROVED
▲			
▲			
▲			
▲			



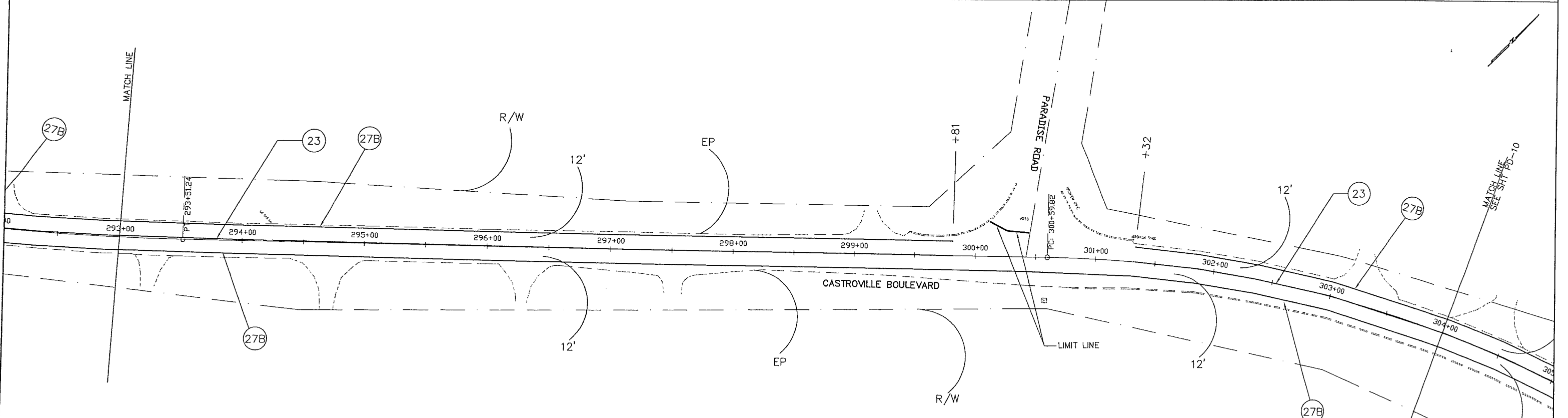
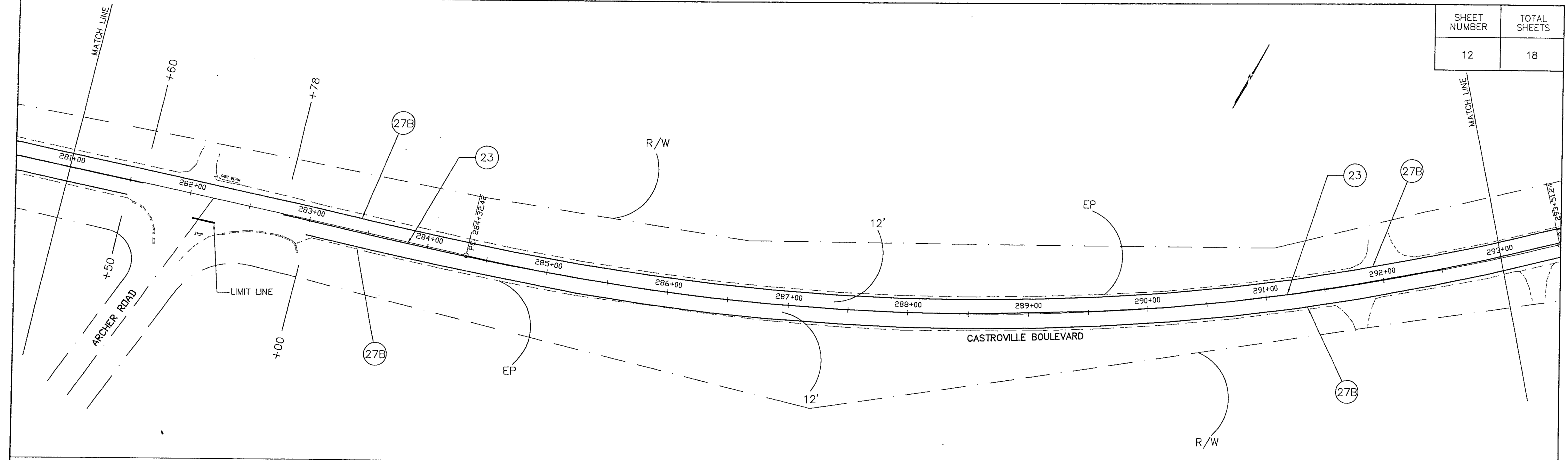
COUNTY OF MONTEREY
 RESOURCE MANAGEMENT AGENCY
 DEPARTMENT OF PUBLIC WORKS
 DESIGN SECTION
 168 WEST ALISAL STREET, 2nd FLOOR
 SALINAS, CALIFORNIA 93901
 (831)755-4800/FAX (831)755-4958

CASTROVILLE BOULEVARD
 PAVEMENT DELINEATION PROJECT
 PROJECT NO. 14-142765

PAVEMENT DELINEATION PLAN

DATE 12/19/13	RELATIVE BORDER SCALE: IN INCHES 0 1 2 3	SHEET PD-8
SCALE 1" = 40'	VIEW PD-8	

SHEET NUMBER	TOTAL SHEETS
12	18



ALL DIMENSIONS ARE IN FEET UNLESS OTHERWISE SHOWN.
THIS PLAN ACCURATE FOR PAVEMENT DELINEATION ONLY

SUBMITTED BY, JONATHAN L. PASCUA, P.E.
 DESIGN BY, RYAN D. CHAPMAN, P.E., T.E. CHKD BY .R.C./J.P.
 DRAWN BY, JESUS GUICO CHKD BY .R.C./J.P.
 SPECIFICATIONS WRITTEN BY, ISABELO DELA MERCED CHKD BY .J.P.
 APPROVAL RECOMMENDED BY, PAUL H. GREENWAY, P.E. ASSISTANT DIRECTOR OF PUBLIC WORKS

NO.	DATE	REVISION	APPROVED
▲			
▲			
▲			
▲			



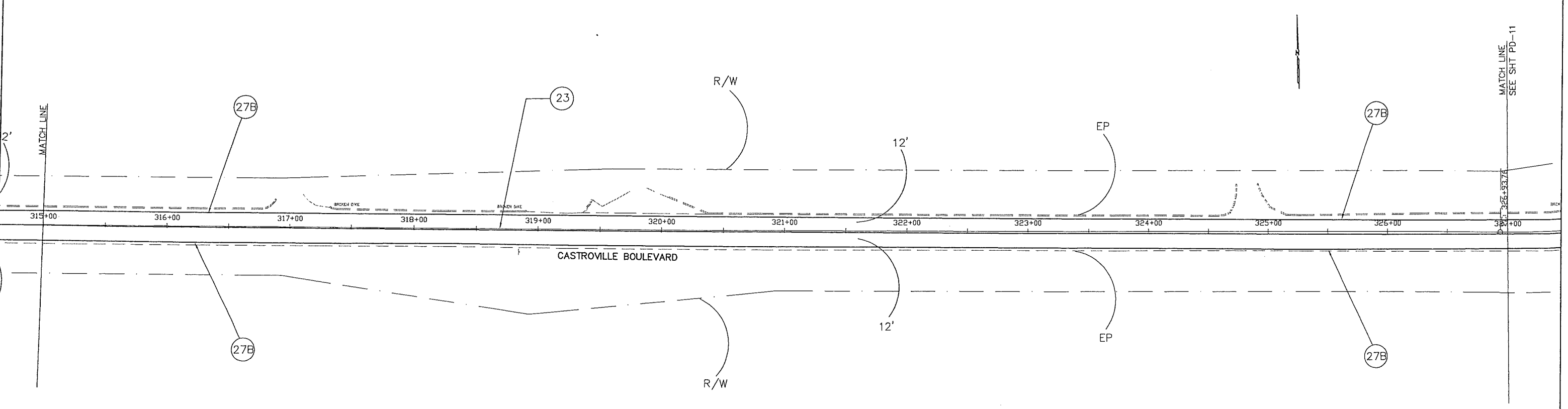
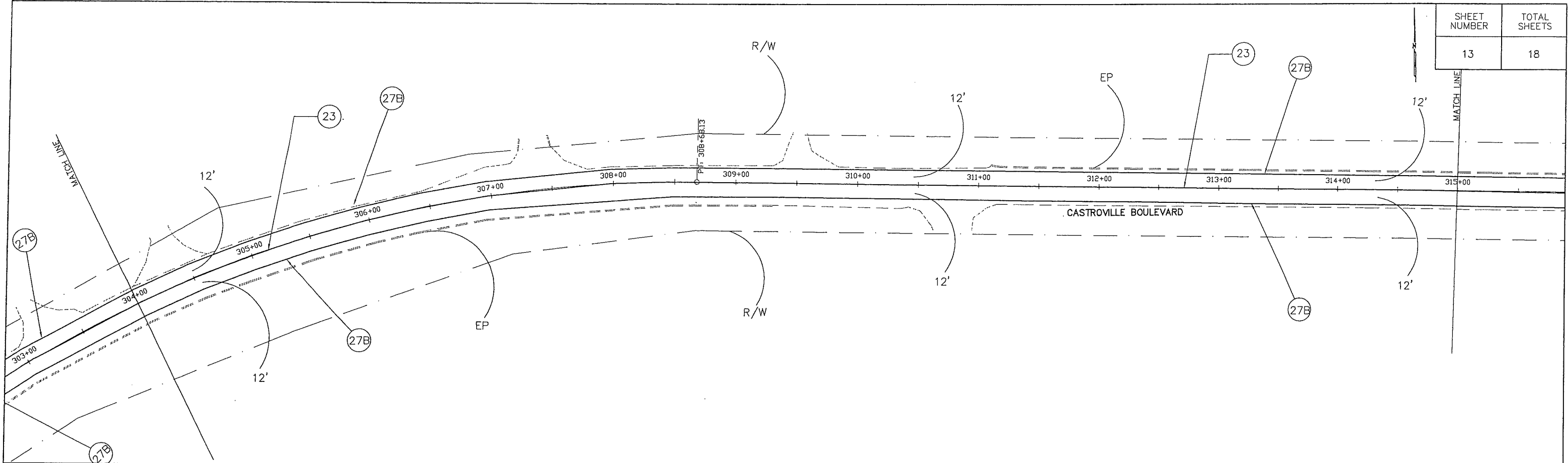
COUNTY OF MONTEREY
 RESOURCE MANAGEMENT AGENCY
 DEPARTMENT OF PUBLIC WORKS
 DESIGN SECTION
 168 WEST ALISAL STREET, 2nd FLOOR
 SALINAS, CALIFORNIA 93901
 (831)755-4800/FAX (831)755-4958

CASTROVILLE BOULEVARD
 PAVEMENT DELINEATION PROJECT
 PROJECT NO. 14-142765

PAVEMENT DELINEATION PLAN

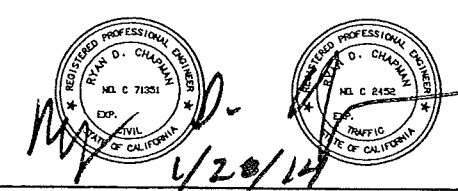
DATE 12/19/13	RELATIVE BORDER SCALE: IN INCHES 0 1 2 3	SHEET PD-9
SCALE 1" = 40'	NEW PD-9	

SHEET NUMBER	TOTAL SHEETS
13	18



ALL DIMENSIONS ARE IN FEET UNLESS OTHERWISE SHOWN.
THIS PLAN ACCURATE FOR PAVEMENT DELINEATION ONLY

SUBMITTED BY, JONATHAN L. PASCUA, P.E.
 DESIGN BY, RYAN D. CHAPMAN, P.E., T.E. CHKD BY .R.C./J.P.
 DRAWN BY, JESUS GUICO CHKD BY .R.C./J.P.
 SPECIFICATIONS WRITTEN BY, ISABELO DELA MERCED CHKD BY .J.P.
 APPROVAL RECOMMENDED BY, PAUL H. GREENWAY, P.E. ASSISTANT DIRECTOR OF PUBLIC WORKS



NO.	DATE	REVISION	APPROVED
▲			
▲			
▲			
▲			



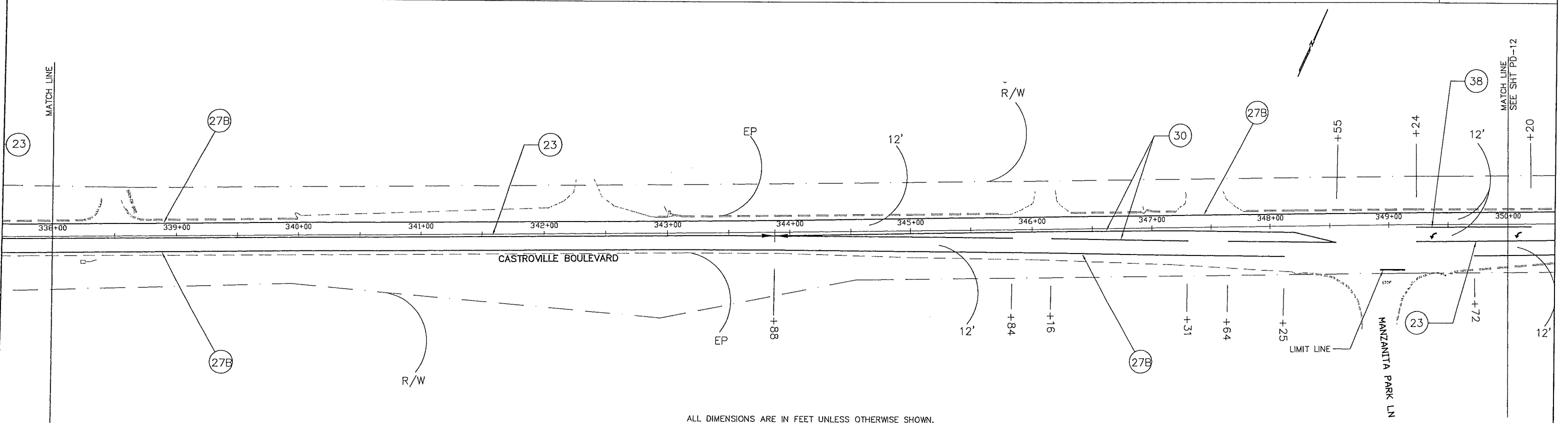
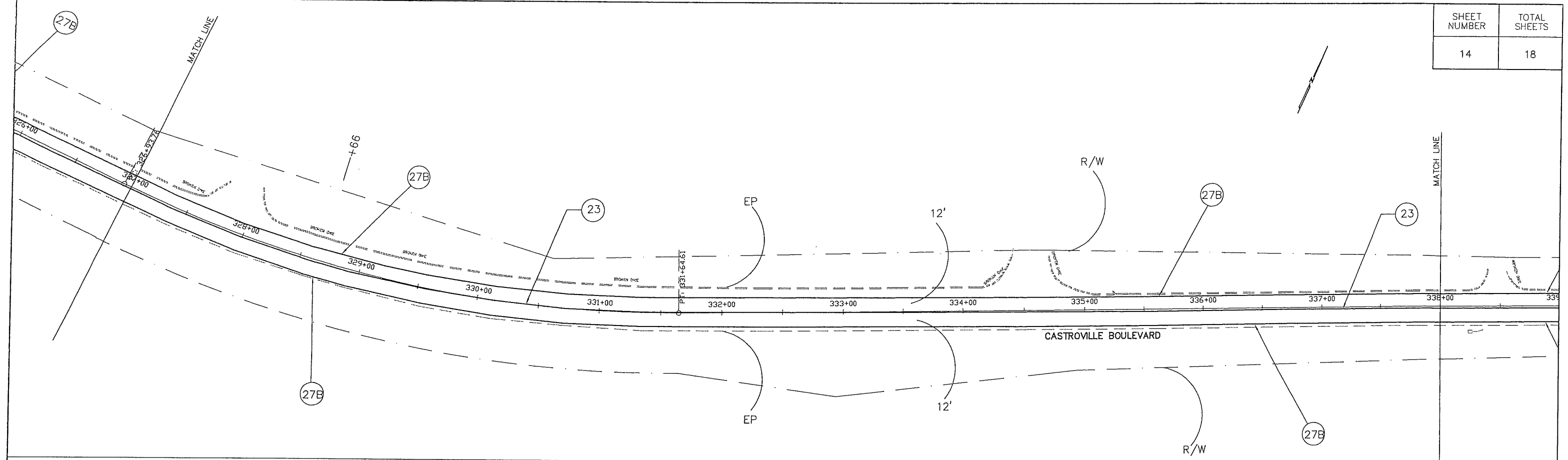
COUNTY OF MONTEREY
 RESOURCE MANAGEMENT AGENCY
 DEPARTMENT OF PUBLIC WORKS
 DESIGN SECTION
 168 WEST ALISAL STREET, 2nd FLOOR
 SALINAS, CALIFORNIA 93901
 (831)755-4800/FAX (831)755-4958

CASTROVILLE BOULEVARD
 PAVEMENT DELINEATION PROJECT
 PROJECT NO. 14-142765

PAVEMENT DELINEATION PLAN

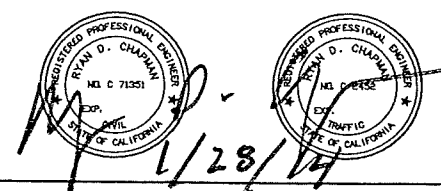
DATE 12/19/13	RELATIVE BORDER SCALE: IN INCHES 0 1 2 3	SHEET PD-10
SCALE 1"=40'	VIEW PD-10	

SHEET NUMBER	TOTAL SHEETS
14	18



ALL DIMENSIONS ARE IN FEET UNLESS OTHERWISE SHOWN.
THIS PLAN ACCURATE FOR PAVEMENT DELINEATION ONLY

SUBMITTED BY JONATHAN L. PASCUA, P.E.
 DESIGN BY RYAN D. CHAPMAN, P.E., T.E. CHKD BY R.C./J.P.
 DRAWN BY JESUS GUICO CHKD BY R.C./J.P.
 SPECIFICATIONS WRITTEN BY ISABELO DELA MERCED CHKD BY J.P.
 APPROVAL RECOMMENDED BY PAUL H. GREENWAY, P.E. ASSISTANT DIRECTOR OF PUBLIC WORKS



NO.	DATE	REVISION	APPROVED
▲			
▲			
▲			
▲			

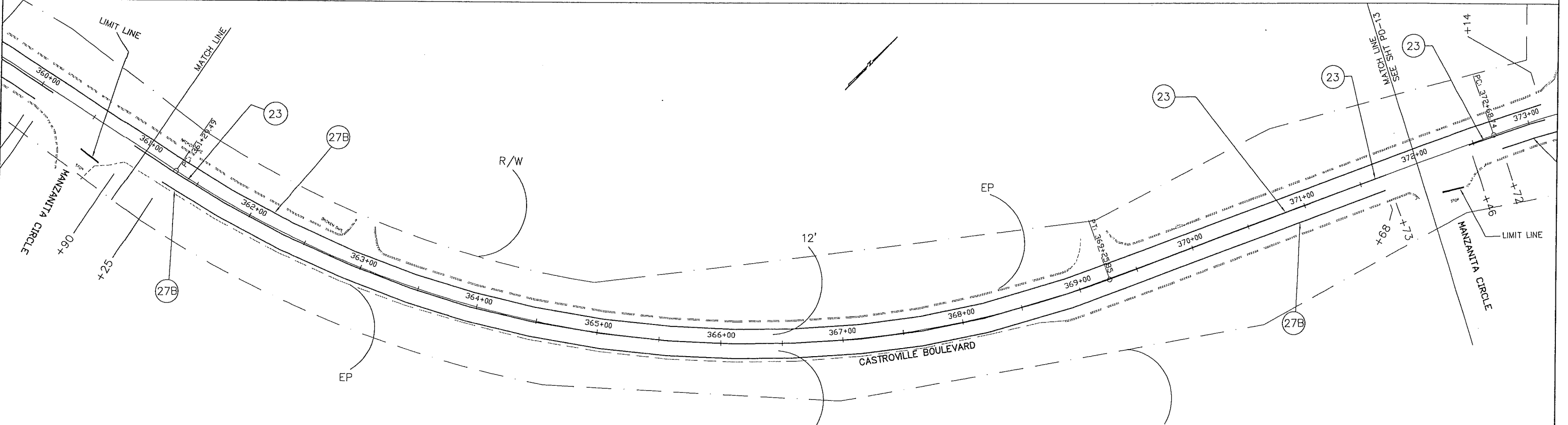
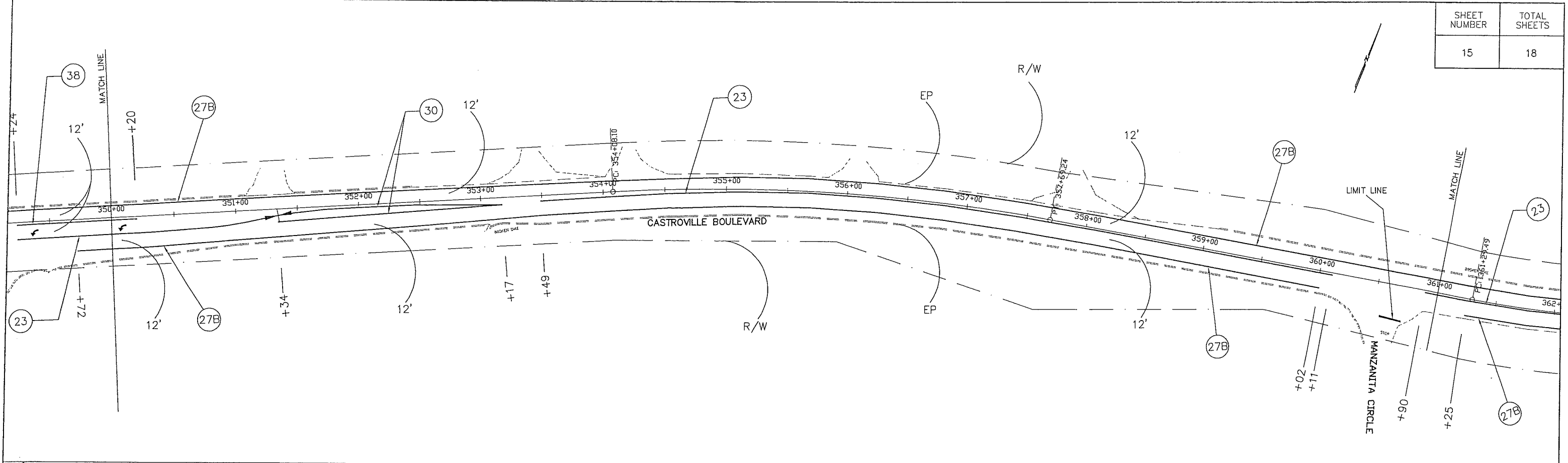


COUNTY OF MONTEREY
 RESOURCE MANAGEMENT AGENCY
 DEPARTMENT OF PUBLIC WORKS
 DESIGN SECTION
 168 WEST ALISAL STREET, 2nd FLOOR
 SALINAS, CALIFORNIA 93901
 (831)755-4800/FAX (831)755-4958

CASTROVILLE BOULEVARD
 PAVEMENT DELINEATION PROJECT
 PROJECT NO. 14-142765

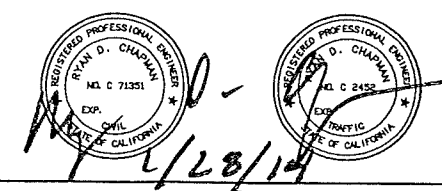
PAVEMENT DELINEATION PLAN

DATE 12/19/13	RELATIVE BORDER SCALE: IN INCHES 0 1 2 3	SHEET PD-11
SCALE 1" = 40'	VIEW PD-11	



ALL DIMENSIONS ARE IN FEET UNLESS OTHERWISE SHOWN.
THIS PLAN ACCURATE FOR PAVEMENT DELINEATION ONLY

SUBMITTED BY: JONATHAN L. PASCUA, P.E.
 DESIGN BY: RYAN D. CHAPMAN, P.E., T.E. CHKD BY: .R.C./J.P.
 DRAWN BY: JEUS GUICO CHKD BY: .R.C./J.P.
 SPECIFICATIONS WRITTEN BY: ISABELO DELA MERCED CHKD BY: J.P.
 APPROVAL RECOMMENDED BY: PAUL H. GREENWAY, P.E. ASSISTANT DIRECTOR OF PUBLIC WORKS



NO.	DATE	REVISION	APPROVED
▲			
▲			
▲			
▲			

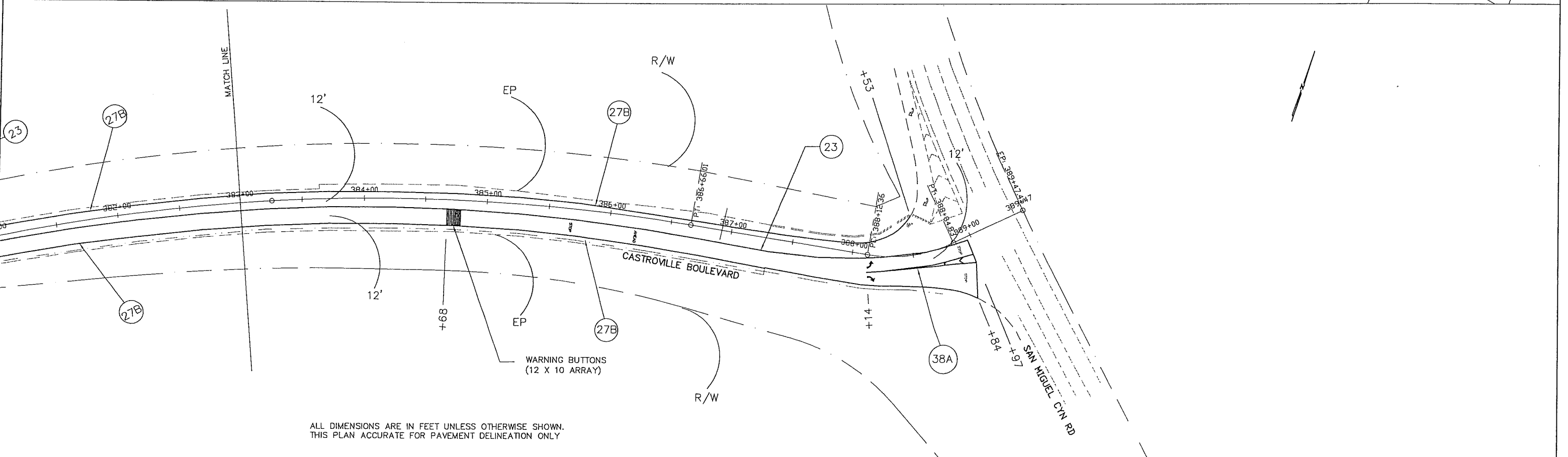
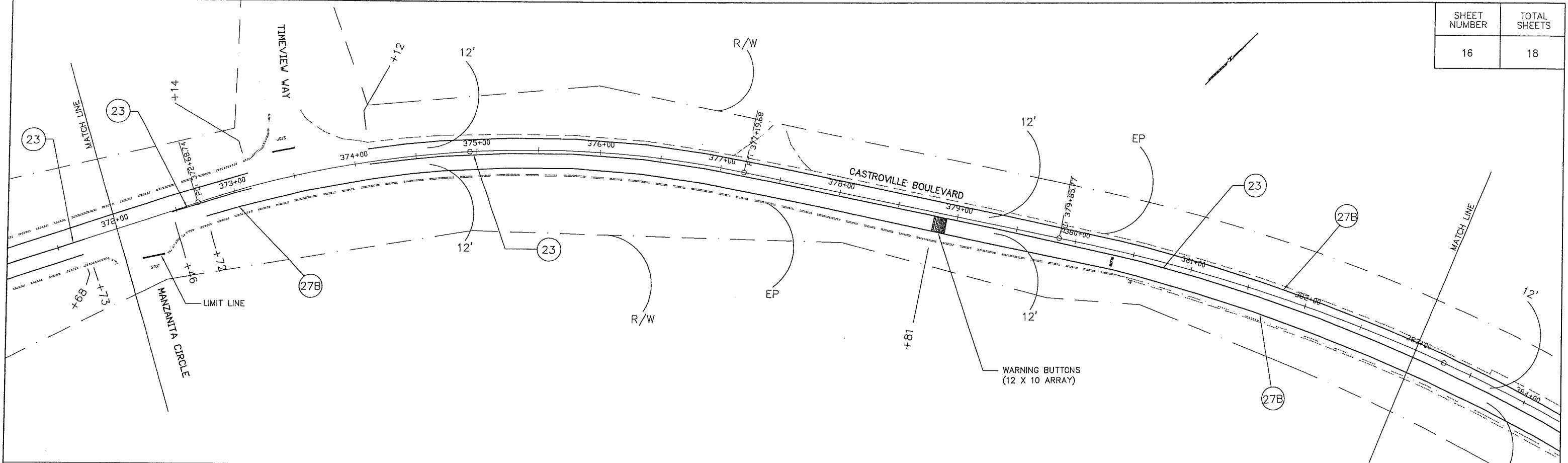


COUNTY OF MONTEREY
 RESOURCE MANAGEMENT AGENCY
 DEPARTMENT OF PUBLIC WORKS
 DESIGN SECTION
 168 WEST ALISAL STREET, 2nd FLOOR
 SALINAS, CALIFORNIA 93901
 (831)755-4800/FAX (831)755-4958

CASTROVILLE BOULEVARD
 PAVEMENT DELINEATION PROJECT
 PROJECT NO. 14-142765

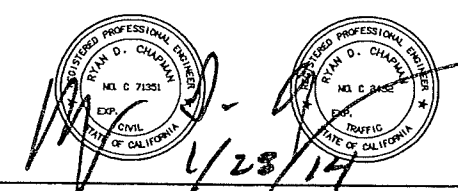
PAVEMENT DELINEATION PLAN

DATE 12/19/13	RELATIVE BORDER SCALE: IN INCHES 0 1 2 3	SHEET PD-12
SCALE 1" = 40'	VIEW PD-12	



ALL DIMENSIONS ARE IN FEET UNLESS OTHERWISE SHOWN.
THIS PLAN ACCURATE FOR PAVEMENT DELINEATION ONLY

SUBMITTED BY, JONATHAN L. PASCUA, P.E.
 DESIGN BY, RYAN D. CHAPMAN, P.E., T.E. CHKD BY .R.C./J.P.
 DRAWN BY, JESUS GUICO CHKD BY .R.C./J.P.
 SPECIFICATIONS WRITTEN BY, ISABELO DELA MERCED CHKD BY .J.P.
 APPROVAL RECOMMENDED BY, PAUL H. GREENWAY, P.E. ASSISTANT DIRECTOR OF PUBLIC WORKS



NO.	DATE	REVISION	APPROVED
▲			
▲			
▲			
▲			



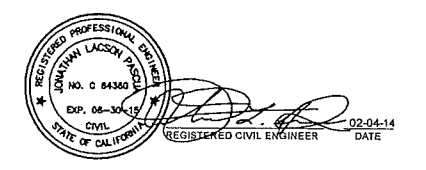
COUNTY OF MONTEREY
 RESOURCE MANAGEMENT AGENCY
 DEPARTMENT OF PUBLIC WORKS
 DESIGN SECTION
 168 WEST ALISAL STREET, 2nd FLOOR
 SALINAS, CALIFORNIA 93901
 (831)755-4800/FAX (831)755-4958

CASTROVILLE BOULEVARD PAVEMENT DELINEATION PROJECT PROJECT NO. 14-142765		
PAVEMENT DELINEATION PLAN		
DATE 12/19/13	RELATIVE BORDER SCALE: IN INCHES 0 1 2 3	SHEET PD-13
SCALE 1" = 40'	VIEW PD-13	

PAVEMENT DELINEATION QUANTITIES

LOCATION	DETAIL No. OR PAVEMENT MARKING	REMOVE PAVEMENT MARKER	REMOVE THERMOPLASTIC PAVEMENT MARKING	REMOVE THERMOPLASTIC TRAFFIC STRIPE		THERMOPLASTIC TRAFFIC STRIPE					THERMOPLASTIC PAVEMENT MARKING	PAVEMENT MARKER							
				4" WHITE	4" YELLOW	4" WHITE (SOLID)	4" YELLOW (SOLID)	4" YELLOW (BROKEN 36-12)	4" WHITE (BROKEN 17-7)	8" WHITE (SOLID)		RETROREFLECTIVE		NON-REFLECTIVE					
												EA	SQFT	LF	LF	SQFT	EA	TYPE D	TYPE G
SR 156 TO DOLAN RD	22	4			65														
	23 MODIFIED							18,082					756			3,768			
	27B			150		22,546													
	30 MODIFIED							9,156					406			1,918			
	38A										614								
	38	3		106							1,050			46					
	SCHOOL AHEAD SIGNAL											35							
	TYPE IV LEFT ARROW			120								120							
	TYPE IV RIGHT ARROW			90								90							
	MISC ISLAND/CHEVRON			160								160							
	STOP			198								198							
	LIMIT LINE			215								215							
	DOLAN RD TO ELKHORN RD	8			44														
9														4					
22		48			1,084														
23 MODIFIED								1,084					48			226			
27B				2,098		2,098													
32		150			1,730														
33 MODIFIED							1,382	1,382					150			404			
38		17		768							384			17					
SLOW				23								23							
SCHOOL				35								35							
TYPE IV LEFT ARROW				90								90							
XING				21								21							
TYPE VI ARROW				252								252							
STOP			44								44								
LIMIT LINE			50								50								
ELKHORN RD TO PARADISE RD	22	48			1,062														
	23 MODIFIED							12,624					529			2,636			
	27B			1,779		13,655													
	29	40			1,604														
	30 MODIFIED							1,604					76			338			
	38	16		634							317			16					
	SLOW			23								23							
	SCHOOL			35								35							
	XING			21								21							
	TYPE IV LEFT ARROW			45								45							
	LIMIT LINE			54								54							
	STOP			44								44							
	CROSS WALK											484							
SHEET SUB-TOTAL		326	1,520	5,579	5,545	38,299	43,932	1,382	145	2,365	2,133	1,965	83	9,290	0				
SHEET TOTAL (PDQ-1)		326	1,520	11,124		82,231	1,382	145	2,365	2,133	2,048		9,290						

SUBMITTED BY, JONATHAN L. PASCUA, P.E.
 DESIGN BY, ISABELO DELA MERCED
 DRAWN BY, JESUS GUICO/ J. DELA MERCED
 SPECIFICATIONS WRITTEN BY, ISABELO DELA MERCED
 APPROVAL RECOMMENDED BY, PAUL, H. GREENWAY, P.E.
 ASSISTANT DIRECTOR OF PUBLIC WORKS



NO.	DATE	REVISION	APPROVED
△			
△			
△			
△			
△			



COUNTY OF MONTEREY
 RESOURCE MANAGEMENT AGENCY
 DEPARTMENT OF PUBLIC WORKS
 DESIGN SECTION
 168 WEST ALISAL STREET, 2nd FLOOR
 SALINAS, CALIFORNIA 93901
 (831)755-4800/FAX (831)755-4958

CASTROVILLE BOULEVARD
 PAVEMENT DELINEATION PROJECT
 PROJECT NO. 14-142765

SUMMARY OF QUANTITIES

DATE 02/03/14	RELATIVE BORDER SCALE: IN INCHES 0 1 2 3	SHEET Q-1
SCALE NTS	VIEW Q-1	

PAVEMENT DELINEATION QUANTITIES

LOCATION	DETAIL No. OR PAVEMENT MARKING	REMOVE PAVEMENT MARKER	REMOVE THERMOPLASTIC PAVEMENT MARKING	REMOVE THERMOPLASTIC TRAFFIC STRIPE		THERMOPLASTIC TRAFFIC STRIPE					THERMOPLASTIC PAVEMENT MARKING	PAVEMENT MARKER					
				4" WHITE	4" YELLOW	4" WHITE (SOLID)	4" YELLOW (SOLID)	4" YELLOW (BROKEN 36-12)	4" WHITE (BROKEN 17-7)	8" WHITE (SOLID)		RETROREFLECTIVE		NON-REFLECTIVE			
												4" WHITE	4" YELLOW	TYPE D	TYPE G	TYPE AY	TYPE A
		EA	SQFT	LF		LF					SQFT	EA					
PARADISE RD TO MANZANITA CIRCLE (WEST ENTRANCE)	23 MODIFIED						10,028						420		2,090		
	27B					11,754											
	30 MODIFIED						2,970						128		620		
	38										96			5			
	TYPE IV LEFT ARROW			30								30					
	STOP			44								44					
MANZANITA CIRCLE (WEST ENTRANCE) TO SAN MIGUEL CANYON RD	LIMIT LINE		40								40						
	22	6			88												
	23 MODIFIED						5,272						223		1,101		
	27B			62		5,352											
	38A			182						169							
	STOP		88								110						
	AHEAD										31						
	TYPE IV LEFT ARROW										15						
	TYPE IV RIGHT ARROW										15						
	MISC ISLAND/CHEVRON										16						
WARNING BUTTONS (ARRAY)																240	
LIMIT LINE		70								70							
SHEET SUB-TOTAL		6	272	244	88	17,106	18,270				265	371	771	5	3,811	240	
SHEET TOTAL (PDQ-2)		6	272	332		35,376					265	371	776		4,051		
SHEET TOTAL (PDQ-1)		326	1,520	11,124		82,231	1,382	145	2,365	2,133	2,048				9,290		
TOTAL		332	1,792	11,456		117,607	1,382	145	2,630	2,504	2,824				13,341		

ASPHALTIC EMULSION (FOG SEAL COAT)

LOCATION	TONS
SR 156 TO DOLAN RD	8.3
1000 FT E/O ELKHORN RD TO PARADISE RD	2.4
PARADISE RD TO MANZANITA CIRCLE (WEST ENTRANCE)	3.2
MANZANITA CIRCLE (WEST ENTRANCE) TO SAN MIGUEL CYN RD	2.1
TOTAL	16

SUBMITTED BY JONATHAN L. PASCUA, P.E.
 DESIGN BY ISABELO DELA MERCED CHKD BY J.P.P.
 DRAWN BY JESUS, GUICO/ISABELO DELA MERCED CHKD BY J.P.P.
 SPECIFICATIONS WRITTEN BY ISABELO DELA MERCED CHKD BY J.P.P.
 APPROVAL RECOMMENDED BY PAUL, H. GREENWAY, P.E.
 ASSISTANT DIRECTOR OF PUBLIC WORKS



NO.	DATE	REVISION	APPROVED
△			
△			
△			
△			
△			



COUNTY OF MONTEREY
 RESOURCE MANAGEMENT AGENCY
 DEPARTMENT OF PUBLIC WORKS
 DESIGN SECTION
 168 WEST ALISAL STREET, 2nd FLOOR
 SALINAS, CALIFORNIA 93901
 (831)755-4800/FAX (831)755-4958

CASTROVILLE BOULEVARD
 PAVEMENT DELINEATION PROJECT
 PROJECT NO. 14-142765

SUMMARY OF QUANTITIES

DATE	RELATIVE BORDER SCALE: IN INCHES	SHEET Q-2
02/03/14	0 1 2 3	
SCALE NTS	VIEW Q-2	