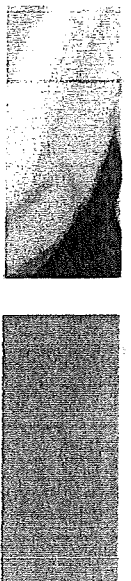
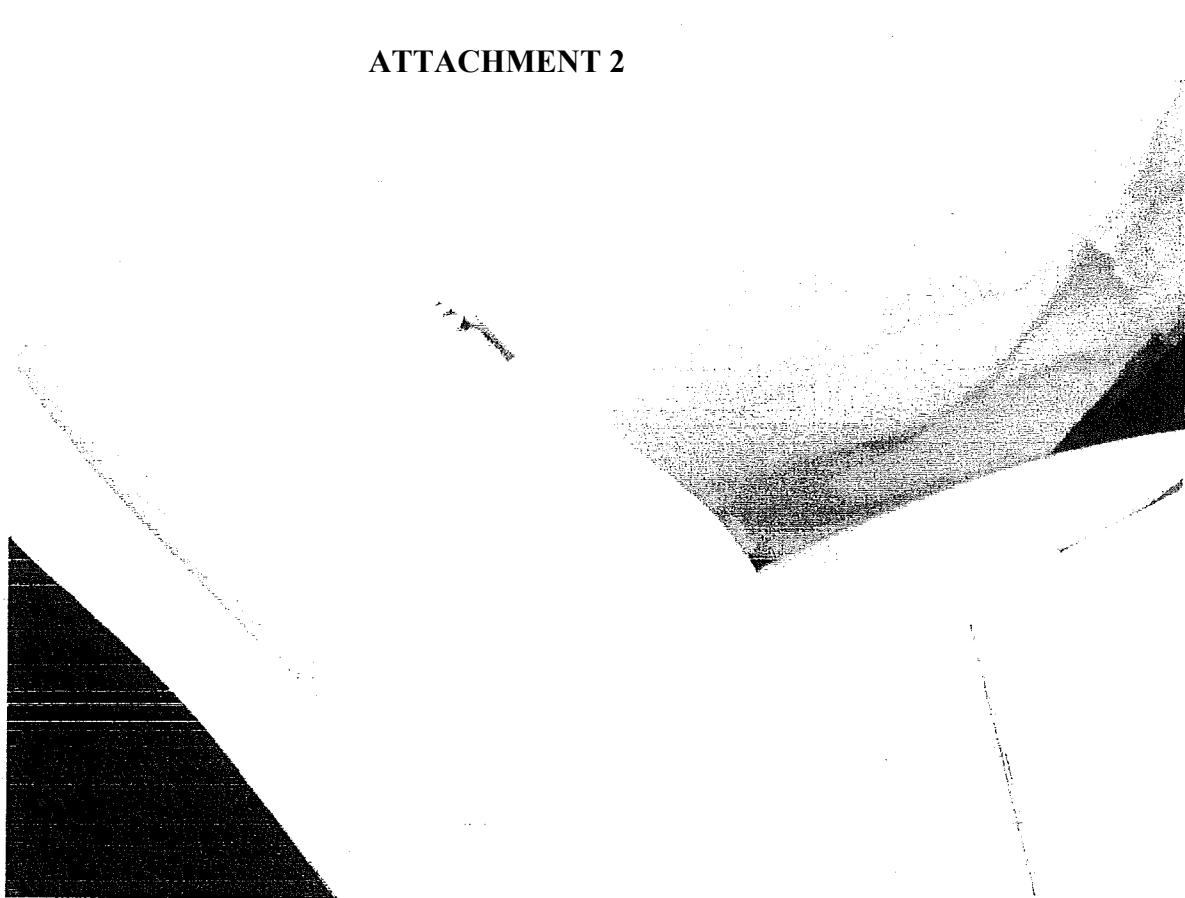
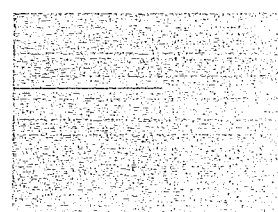
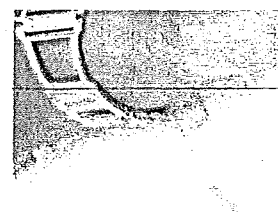
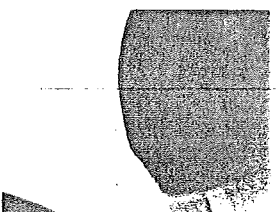
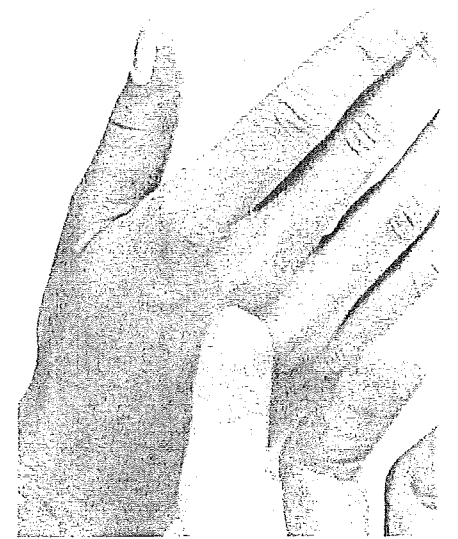
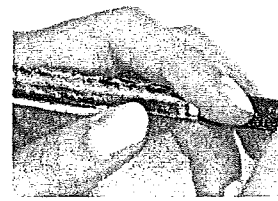
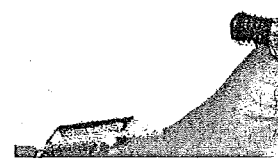
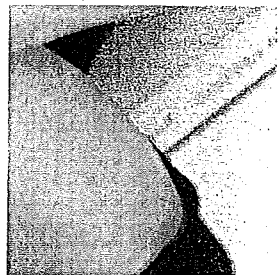
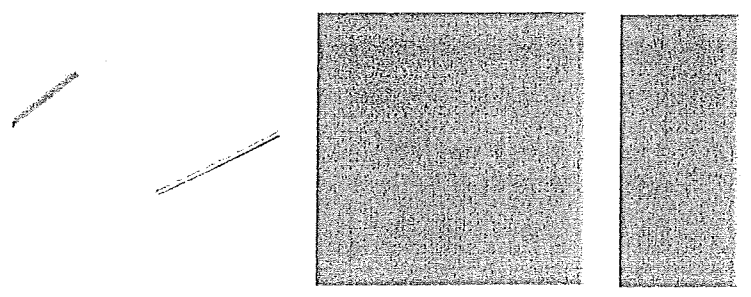


ATTACHMENT 2



County of Monterey
ARCHITECTURAL SERVICES FOR
SCHEMATIC DESIGN THROUGH
CONSTRUCTION SERVICES OF JAIL
HOUSING ADDITION PROJECT-
RFQ #10401
January 14, 2013



CE
LIONAKIS

SECTION ONE

COVER LETTER

SIGNATURE PAGE

RECEIPT OF SIGNED ADDENDA

TABLE OF CONTENTS

January 14, 2013

County of Monterey
Contracts/Purchasing Office
168 W. Alisal Street, 3rd Floor
Salinas, CA 93901-2439

Re: Architectural Services for Schematic Design Through Construction Services of Jail Housing Addition Project #10401

To Whom it May Concern:

For more than 100 years, Lionakis has provided design solutions that are unique and tailored to our clients' needs. We attribute our longevity to the number of successful long-term client relationships we have developed, which includes numerous public and government agency clients. Our qualifications package presents the many distinct advantages Lionakis offers your project, including:

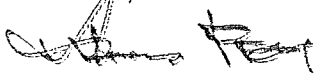
Specialized Correctional Expertise—Lionakis' proven track record of experience with Criminal Justice facilities provides us with the necessary planning and design expertise to assist the County with your new Jail Housing Addition project. Our in-house Criminal Justice Team has experience designing more than 2.1 million square feet and 3,600 beds for 31 correctional facilities in the last 20 years. Based on this proven experience, Lionakis has a specialized knowledge of how to integrate operational efficiencies, design flexible support and medical program spaces which foster rehabilitation and create normalized environments. Lionakis also offers extensive experience with AB900 and SB81 funding processes and understands the impacts of AB109 realignment to local County institutions. We also understand the challenges and budget constraints on daily operational issues such as rehabilitative programs, medical and mental health, longer sentences and average length of stay.

Efficient Design—Our team will work with you and with consultants from other disciplines to deliver an operationally based, efficient design that will incorporate sustainable solutions and result in the highest value for your investment. With more than 80 LEED Accredited Professionals on staff, Lionakis is a regional leader in sustainable design and technology. Additionally, Lionakis uses REVIT software to produce fully operational BIM models. Utilizing REVIT BIM we have recently designed the San Joaquin County Jail, Stanislaus County Juvenile and their Jail Bed Housing Replacement which contains multiple buildings all with several support functions. Our designers will work closely with your County to 3D model your project.

Trusted Agency Relationships—Lionakis values the relationships we have developed over the years with agencies such as the Board of State and Community Corrections (BSCC, formerly CSA) and the State Fire Marshal's (SFM) office. In fact, Richard Hoerner, Project Manager, and I, Principal-in-Charge, have both served in an advisory role on the SFM's Task Force for I-3 Occupancies Building Code changes and have also participated on the BSCC Standards Committee. These appointments demonstrate the trust and experience that Lionakis has earned with the above governing agencies.

Thank you for the opportunity to submit our qualifications to you. We are excited to propose and look forward to the opportunity to begin a strong relationship with your County and are eager to demonstrate our extensive abilities.

Sincerely,



Maynard Feist | AIA, LEED AP
Principal/Primary Contact

P: 916-558-1900 / F: 916-558-1919

1919 Nineteenth Street, Sacramento, CA 95811

Lionakis is an S Corporation and there are no planned changes in the organization.

Years in existence: 104

RFQ SIGNATURE PAGE

COUNTY OF MONTEREY
CONTRACTS/PURCHASING DIVISION

RFQ # 10401
ISSUE DATE: Nov. 30, 2012



**RFP TITLE: ARCHITECTURAL SERVICES FOR SCHEMATIC DESIGN THROUGH CONSTRUCTION
SERVICES OF JAIL HOUSING ADDITION PROJECT**

PROPOSALS ARE DUE IN THE OFFICE OF THE CONTRACTS/PURCHASING
OFFICER BY

3:00 P.M., LOCAL TIME, ON TUESDAY JANUARY 14, 2013

MAILING ADDRESS:

COUNTY OF MONTEREY
CONTRACTS/PURCHASING OFFICE
168 W. ALISAL STREET, 3rd FL.
SALINAS, CA 93901-2439

QUESTIONS ABOUT THIS RFQ SHOULD BE DIRECTED TO

Jaime Ayala via email: jayala@montereyca.gov

CONTRACTOR MUST INCLUDE THE FOLLOWING IN EACH PROPOSAL (1 original plus 6 copies):

☒ ALL REQUIRED CONTENT AS DEFINED PER SECTION 7.1 HEREIN

This Signature Page must be included with your submittal in order to validate your proposal.


Proposals submitted without this page will be deemed non-responsive.

☒ CHECK HERE IF YOU HAVE ANY EXCEPTIONS TO THIS SOLICITATION.

CONTRACTOR MUST COMPLETE THE FOLLOWING TO VALIDATE PROPOSAL

I hereby agree to furnish the articles and/or services stipulated in my proposal at the price quoted, subject to the instructions and conditions in the Request for Proposal package. I further attest that I am an official officer representing my firm and authorized with signatory authority to present this proposal package.

Company Name: Lionakis Date January 14, 2013

Signature:  Printed Name: Maynard Feist

Street Address: 1919 Nineteenth Street

City: Sacramento State: CA Zip: 95811

Phone: (916) 558-1900 Fax: (916) 558-1919 Email: Maynard.Feist@Lionakis.com

License No. (If applicable): C23115

License Classification (If applicable): Architect



ADDENDUM

COUNTY OF MONTEREY CONTRACTS/PURCHASING DEPARTMENT

Date: Tuesday December 11, 2012

To: All Contractors Submitting Qualifications for RFQ # 10401 ARCHITECTURAL SERVICES FOR SCHEMATIC DESIGN THROUGH CONSTRUCTION SERVICES OF JAIL HOUSING ADDITION FOR THE COUNTY OF MONTEREY

From: Jaime Ayala, Deputy Purchasing Agent

Subject: Addendum No. 1

This addendum consists of QUESTIONS AND ANSWERS, from walk-through for **RFQ # 10401 ARCHITECTURAL SERVICES FOR SCHEMATIC DESIGN THROUGH CONSTRUCTION SERVICES OF JAIL HOUSING ADDITION FOR THE COUNTY OF MONTEREY.**

- This acknowledgement signature page of Addendum No. # 1 must be submitted with your bid proposal.
- If this acknowledgement signature page is not submitted with your bid proposal, your entire bid package may be considered non-responsive.

RECEIPT IS HEREBY ACKNOWLEDGED OF ADDENDUM NO. 1, RFQ #10401



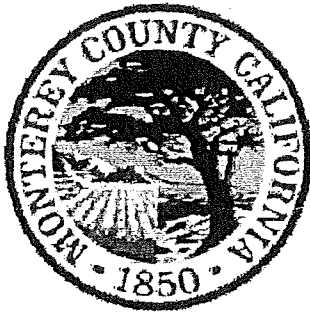
Authorized Company Signature

Maynard Feist

Printed Name

Lionakis
Company Name

January 14, 2013
Date



ADDENDUM

COUNTY OF MONTEREY CONTRACTS/PURCHASING DEPARTMENT

Date: Wednesday December 19, 2012

To: All Contractors Submitting Qualifications for RFQ # 10401 ARCHITECTURAL
SERVICES FOR SCHEMATIC DESIGN THROUGH CONSTRUCTION SERVICES OF
JAIL HOUSING ADDITION FOR THE COUNTY OF MONTEREY

From: Jaime Ayala, Deputy Purchasing Agent

Subject: Addendum No. 2

This addendum consists of written QUESTIONS AND ANSWERS, submitted for **RFQ # 10401 ARCHITECTURAL SERVICES FOR SCHEMATIC DESIGN THROUGH CONSTRUCTION SERVICES OF JAIL HOUSING ADDITION FOR THE COUNTY OF MONTEREY.**

- This acknowledgement signature page of Addendum No. # 2 must be submitted with your bid proposal.
- If this acknowledgement signature page is not submitted with your bid proposal, your entire bid package may be considered non-responsive.

RECEIPT IS HEREBY ACKNOWLEDGED OF ADDENDUM NO. 2, RFQ #10401


Authorized Company Signature

Maynard Feist
Printed Name

Lionakis
Company Name

January 14, 2013
Date

TABLE OF CONTENTS

Section 1

Cover Letter

Signature Page

Receipt of Signed Addenda

Table of Contents

Section 2

Qualifications and Staff Resumes

Section 3

Project Experience and References

Section 4

Project Specific Components

Section 5

Local Preference Declaration Form

Section 6

Environmentally Friendly Practices

Section 7

Fees (Seperately Sealed Envelope)

Section 8

Exceptions

Section 9

Appendix

Letters of Recommendation

SECTION TWO

QUALIFICATIONS AND STAFF RESUMES

QUALIFICATIONS AND STAFF RESUMES

QUALIFIED TEAM

Established in 1909, Lionakis is a multi-disciplined firm which provides services in architecture, structural engineering, interior design, sustainability, planning and graphic design. With a strong commitment to sustainability and a collaborative integrated approach, Lionakis excels at providing solutions for civic, education, healthcare and commercial clients. Our in-house correctional team, led by Maynard Feist, has extensive experience designing facilities similar to yours, including:

- 31 correctional facilities in the past 21 years
- Experience working for 17 California counties and on 18 CDCR sites on a variety of adult and juvenile projects
- More than 3,600 correctional beds and 2.1 million square feet of correctional facilities in the past 20 years
- Five recent AB900/SB81 funded projects and experience with numerous successful funding applications
- 22 years of experience working with the Board of State and Community Corrections (BSCC, formerly CSA) and the State Fire Marshal (SFM)

Our team understands that correctional facility architecture is unique and that the programs for these facilities demand design responses that are different than any other building type. These facilities are as individual as the agencies that operate them. There is one commonality however; each facility must meet the operational philosophy of the institution that administers them. Lionakis brings this understanding and expertise to the projects in combination with our trusted experience working successfully with the BSCC and SFM agencies to directly benefit your projects

UNIQUE AND OPERATIONALLY BASED

Lionakis' commitment is to design a facility with environments that support our client's philosophy. We understand the importance of providing a safe and secure place of confinement for both the inmates and the staff.

The design of detention facilities requires a unique perspective based on experience. Over the years, Lionakis has developed a thorough knowledge of detention facility design needs and issues through the planning, design and phasing of numerous additions, alterations and newly constructed detention facilities throughout California. With a dedicated, in-house Criminal Justice Team, we have a deep understanding of the industry and operational issues.



CORE MARKETS

Civic
Commercial
Healthcare
Education

SERVICES

Architecture
Structural Engineering
Interior Design
Planning
Sustainability

OFFICES

Sacramento
San Francisco
Newport Beach
Modesto
Reno
Honolulu

CAPACITY

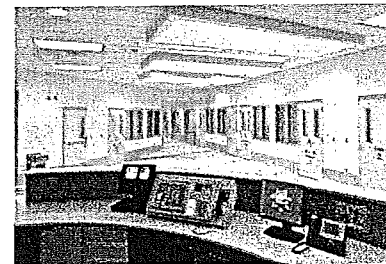
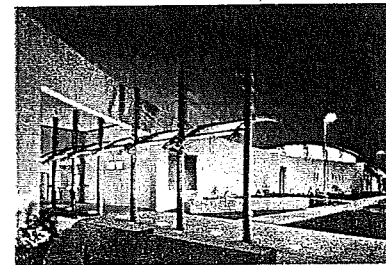
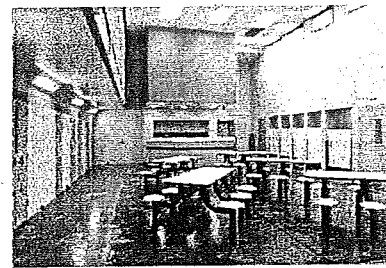
180 Professionals
80 LEED Accredited Professionals

UNIQUE AND OPERATIONALLY BASED CONTINUED

Our experience will benefit your project as follows:

- Identify and define the program and operational requirements to determine the required physical environments.
- Review the impacts at the facility site and coordinate with the various disciplines.
- Validate and coordinate the programmatic scope required through AB900 funding and subsequent submissions.
- Challenge the support service program opportunities to align with current and future AB109 Goals.
- Use progressive design approaches and scenarios to ensure that the end result is supported operationally, functionally and economically.

Our understanding in designing detention facilities allows us to provide solutions and phasing recommendations that not only meet functional and program requirements, but also create rehabilitative environments.



UNDERSTANDING COUNTY VS. CDCR DESIGN

One of the key differentiators Lionakis offers is our unique understanding and extensive primary experience working on county correctional projects versus California Department of Corrections and Rehabilitation (CDCR) projects. Each specific county has its own unique requirements, funding processes and issues that must be taken into account for County correctional projects. CDCR projects are typically a set of templates implemented across hundreds of facilities around the state. Thus, understanding correctional design from a county perspective is vital to the success and customization of your project. Some of the unique county requirements include:

- Limited Operational Costs
- Building Efficiencies
- Staff Efficiency
- Future Growth Planning
- Impacts of AB109 Realignment
- Specialized Security Levels
- Phasing and lack of Swing Space
- Adaptive Medical and Mental Programs for limited length of stay
- Creative Building Solutions

CAPACITY TO MEET YOUR NEEDS

Your projects will have the resources of a nearly 180 person firm with a dedicated Criminal Justice Team with the ability to augment your team with additional staff quickly if needed. Richard Hoerner, Project Manager, will be the single point of contact for your project, offering you a consistent voice and a strong project management approach to effectively deliver your project seamlessly. This approach is also supported by our ability to staff key consultants whom you have worked with, are comfortable with and can trust. This strong approach is a new level of capacity that Monterey County can trust.

COUNTY CORRECTIONAL CLIENTS

- San Joaquin County
- Placer County
- Tehama County
- Calaveras County
- Yolo County
- Nevada County
- Del Norte County
- Washoe County
- Butte County
- Sutter County
- Merced County
- Colusa County
- Sacramento County
- Stanislaus County
- Shasta County

COST SAVING SOLUTIONS

Operational Cost and Staff Efficiency

Detention facilities are often associated with extensive operational costs. Staffing these types of facilities can often contribute to the largest annual operational cost an agency can face. At Lionakis, we understand that the built environment can minimize staffing requirements by designing efficient housing, intake and support service spaces to minimize staff and inmate movement. We also provide the experience gained on past correctional projects to introduce a variety of different operational scenarios and methodologies that can be explored during the planning process.

Beyond staffing costs, we understand that correctional facilities operate 24/7 and require thoughtful planning and execution to reduce long term facility costs. We will work with you to discuss alternative design concepts such as building forms and orientation, site efficiencies, integrating daylighting and analyzing mechanical and electrical systems to minimize utility costs. With experience designing 31 correctional projects, Lionakis brings extensive lessons learned and solution-based ideas to minimize operational costs on your projects.

Planning for Future Growth

On every project, we design facilities to last 50 years or more. This requires careful planning to design spaces that are flexible and adaptable, choosing low maintenance and durable materials, selecting reliable mechanical and electrical systems and integrating technology systems that can be modified in the future as technological advances are developed.

Sustainability

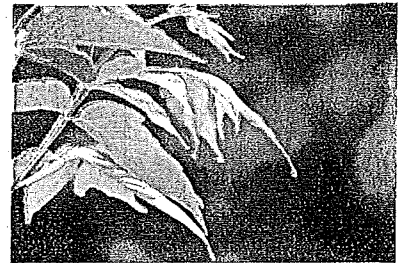
At Lionakis, we believe sustainable design is simply good design. Our in-house Sustainability Studio keeps up-to-date on the latest strategies and design methods associated with sustainability. At Lionakis, every project benefits from this Studio's expertise. We tailor our sustainable solutions to meet specific project goals. From improvements in material use and waste reduction to indoor air quality and sustainable construction practices, we have practical knowledge of what works. Application of this knowledge results in tangible benefits, such as reducing long-term maintenance and operations costs.

As a result of implementing sustainable designs you will experience several operational cost savings that will balance the initial cost premiums. Some of the substantial operational savings will be a result of a thermal building envelope, high efficiency mechanical and electrical systems/controls and daylighting to reduce lighting needs.



OUR IN-HOUSE EXPERT

Maynard Feist is the leader of Lionakis Criminal Justice Team. His 22 years of correctional experience have prepared him for your project. When it comes to detention facilities, knowledge of the physical building is just as important as the reason the building exists. Maynard understands operational requirements of these environments and is ready to work with Monterey County to come up with real solutions.



DID YOU KNOW?

- Our sustainable project portfolio includes nearly four million square feet of LEED Certified and Registered space.
- Lionakis currently has over 80 LEED Accredited Professionals on staff throughout our various disciplines.
- Lionakis has leaders sitting on sustainable committees recognized nationally and statewide in all of our markets.
- Lionakis is listed in ENR's Top Green Design Firms.

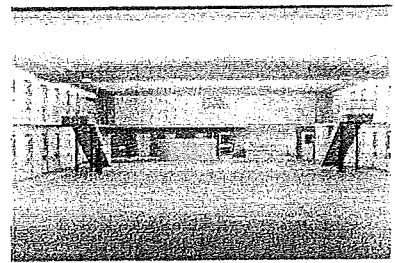
EXPERIENCE WITH AB900 AND SB81 FUNDING

When it comes to experience with the AB900 process, Lionakis has the background, experience and relationships that have resulted in successful funding of projects for our clients. For example, working with Stanislaus County and Shasta County, Lionakis was successful in having the first two juvenile projects approved through the SB81 process, which is the same as the AB900 process. In addition, Lionakis has assisted Yolo County with their successful submissions for AB900 Phase I and Phase II funding. Recently, Lionakis assisted Sutter County and Shasta County in their successful submissions for Phase II AB900 funding. This firsthand knowledge of both the program and the process will directly benefit Monterey County in meeting the critical schedule milestones and obtaining project approvals.

In developing the procedures for AB900 projects, the BSCC (formerly CSA) adopted procedures similar to those used by the Department of General Services (DGS) Project Management Branch for state-funded projects. Lionakis has had extensive experience working with DGS, which has allowed us to be successful in following the AB900 procedures.

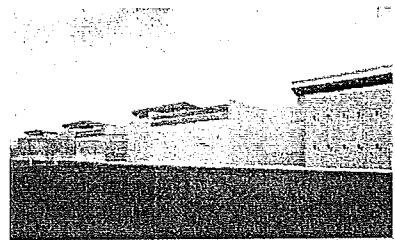
The AB900 process for a Design-Bid-Build project breaks a project down into six tasks, each of which requires approvals from the State Public Works Board (SPWB), the Department of Finance (DOF) and/or the Pooled Money Investment Board (PMIB). At each of these tasks, BSCC acts as the County's advocate and submits documents provided by the County. With our experience, Lionakis will provide the County with the detailed project scope descriptions, project schedules, cost estimates, and the plans and working drawings required at each of these tasks. Using our relationships with and our knowledge of the standards of both BSCC and the SFM office, we will assure that these documents receive the necessary regulatory approvals required by SPWB so that the County will receive the DOF approval to proceed to bid on schedule.

**Please refer to the following page for a case study on our AB900 and SB81 experience.*



AB900 & SB81 EXPERIENCE

- San Joaquin County Jail Expansion
- Sutter County Concept Study
- Yolo County Jail Expansion
- Stanislaus County Juvenile Commitment Center
- Shasta County Juvenile Rehabilitation Facility

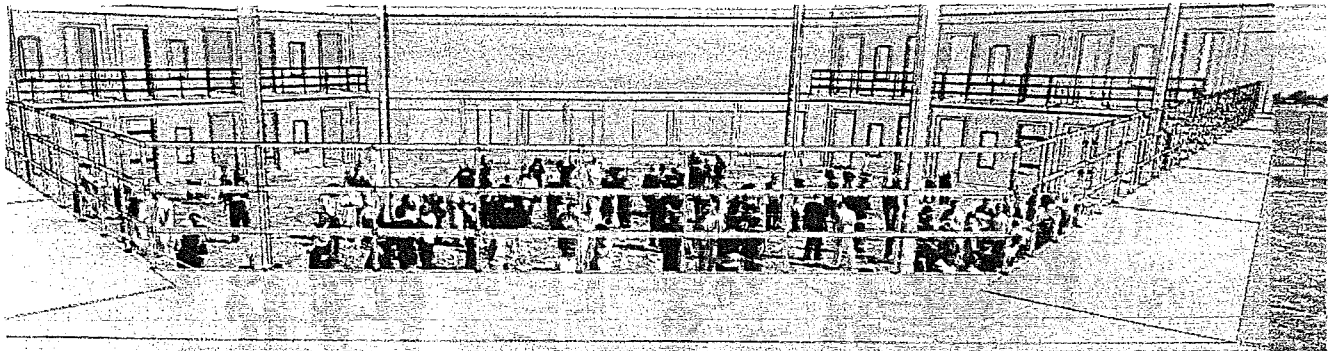


CORRECTIONAL EXPERTISE

- 31 correctional facilities in the past 21 years
- Experience working for 17 California counties and on 18 CDCR sites on a variety of adult and juvenile projects
- More than 3,600 correctional beds and 2.1 million square feet of correctional facilities in the past 20 years
- Five recent AB900/SB81 funded projects and experience with numerous successful funding applications

CASE STUDY

SAN JOAQUIN COUNTY JAIL EXPANSION



Creative Problem Solving

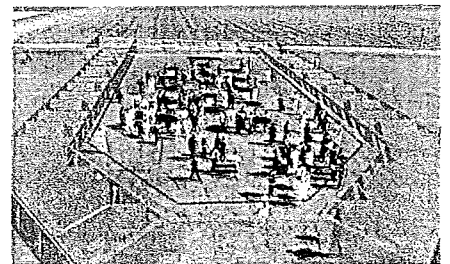
When the State of California issued the Request For Proposals for the Construction or Expansion of County Jail (AB 900 Local Jail Construction Funding Program) the County hired a consultant to help prepare the proposal, including a budget. After the County was successful in receiving funding, Lionakis was hired for design services.

During the pre-design phase, Lionakis and the Jail Team thoroughly reviewed the AB900 submission documents and determined that the prior assumptions and program were exceptionally inadequate to support the allocated budget. There were several items missing from the program, efficiencies were not discussed, the budget did not include any funds for site work and the concept that the Jail Transition Team had for the housing of 1,280 beds was costly to build, resulting in a project that was significantly over budget. Lionakis instituted a process that reevaluated all aspects of the project, including the program, extensive concept assumptions for the housing units, structural systems, HVAC and Plumbing systems and electrical systems. Since the Housing component was the largest portion of the program, Lionakis provided a multitude of housing concepts to review with the Transition Team. We were able to narrow the concept designs to three potential options, including one option that illustrated the AB900 programmed area.

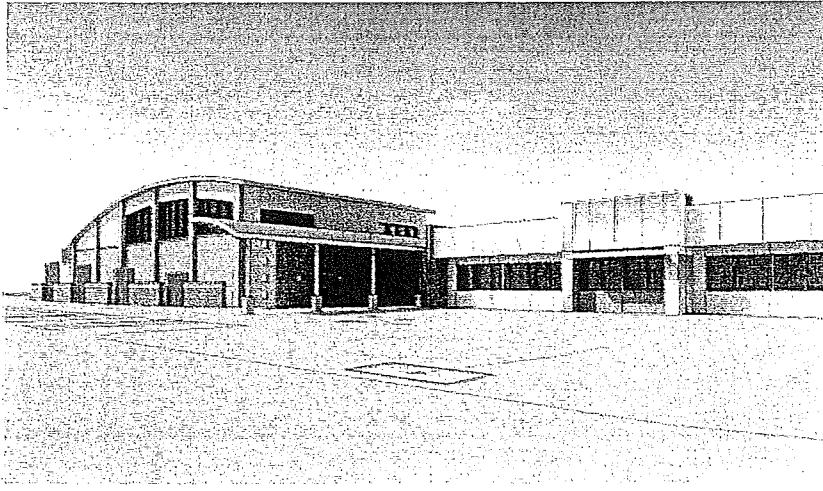
3D Visualization

To help visualize an actual housing unit, we recommended the County physically tape off these three potential concepts in a vacant field adjacent to their minimum security facility. The team then requested that the Sheriff's Department physically place 128 inmates within these taped off areas. We then photographed the inmates at various vertical heights. Utilizing 3-D technology, we superimposed the design of these Housing Units over the photographs and the Jail Transition Team was able to get a feel for the relationships to design concepts. It was obvious that the AB900 programmed area was not adequate to support the operational requirements of the facility.

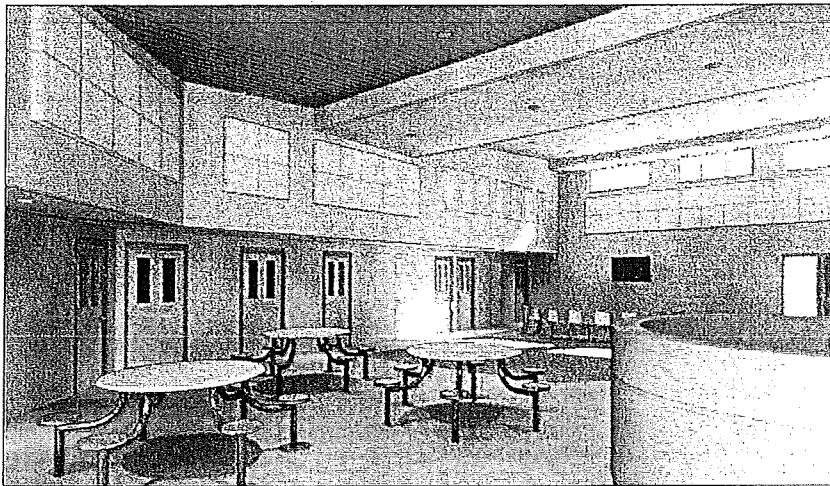
Working with the Jail Transition Team, the program was reevaluated and modified to reflect the intended jail operation while maintaining the number of beds required. The housing concept was modified to take advantage of much more efficient planning and construction methods. Lionakis worked collectively with all members of the design team to determine the most efficient structural systems and the most effective way of distributing HVAC, plumbing and electrical services. Working with County Capital Projects and the County's construction manager, Lionakis developed a project budget that reflected the reality of the economic downturn that had hit the State.



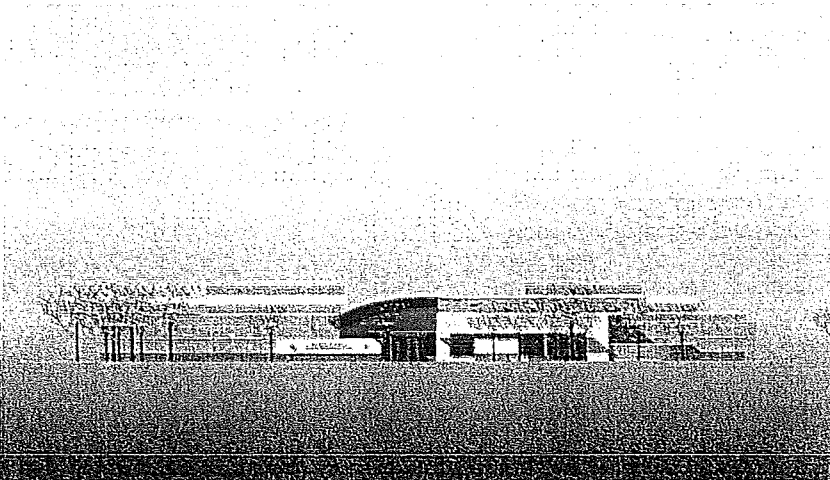
CASE STUDY FIRST TWO SB81 PROJECTS IN CALIFORNIA



Stanislaus County | Juvenile Commitment Center



Stanislaus County | Juvenile Commitment Center



Shasta County | Juvenile Rehabilitation Facility

LESSONS LEARNED

Lionakis is currently serving as the Architect of Record for the Stanislaus County Juvenile Commitment Center and as the Associate Architect for the Shasta County Juvenile Rehabilitation Facility. These two counties are the first two projects in the State to undergo the SB81 funding process. Maynard Feist, the Criminal Justice Director, and the Criminal Justice Team are walking each county through this process. Currently, Stanislaus County has full funding approval, bid under budget and construction is nearly completed. Shasta County's agreements have been fully approved and recently bid under budget. The project is and is currently in construction. We assisted these counties in submitting approval documentation to state agencies such as the Department of Finance and State Public Works Board. Both are approved with the State Fire Marshal and the BSCC.

In an effort to capitalize on the current, favorable bidding climate, the Counties understood that they could not wait for the State to finalize the SB81 agreements and needed to completed their documents.

It was apparent this process was new to a few of the agencies and there have been several changes made to Phase II AB900 bond funding requirements.

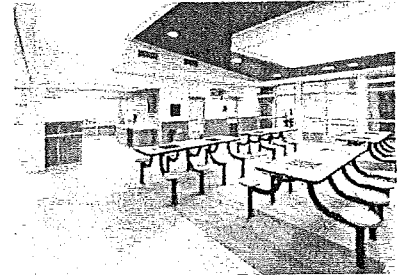
This current and applicable experience offers your county a unique head start in completing your AB900 funding process with limited delays. Your project will benefit from the Lionakis team's "lessons learned" to be directly applied to your project.

FIRST IN THE STATE

Led by Lionakis, the Stanislaus County Juvenile Commitment Center and the Shasta County Juvenile Rehabilitation Facility are the first two projects in the state to undergo the SB81 funding process.

CREATING SAFE WORKING ENVIRONMENTS

How the facility is designed and the environment left to manage can have a large impact in a positive or negative way. Staff and support areas need to be intuitive and easy to operate so individuals feel in control of the space in lieu of the space controlling how to operate. Providing functional staff amenities such as break areas, dining, training and recreation all help in retaining staff and keeping morale high. We have experience providing facilities with staff readiness rooms where staff can check-in for duty, retrieve daily assignments, obtain radios or personal alarm devices, finish reports, utilize electronic key cabinets that control and account for facility keys, etc. This all takes place from a single area and is proven to be highly efficient while adding value. By integrating line-staff with service providers, the benefits are a holistic approach to treatment and security.



CREATING A REHABILITATIVE ENVIRONMENT

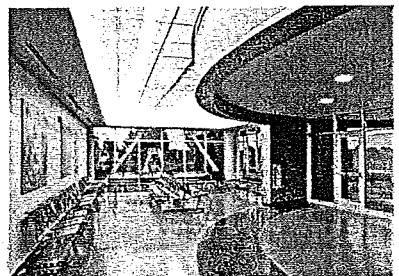
The design and construction of adult detention facilities requires a unique need for balance. There is the obvious necessity to create a safe and secure facility for both inmates and staff. However, this must be balanced with the importance of providing environments that promote rehabilitation where inmates can socialize, learn, get involved with programs and be productive. Lionakis understands this balance and has the correctional experience to accomplish the objectives set forth by the County.



Support Services and Programs

When designing correctional facilities, support services and programs play a tremendous role in creating rehabilitative environments. Proven best practices include involving community based support systems. Many successful programs use the support of paid and unpaid volunteers to create structured learning environments that help develop a safety net for troubled inmates and their families. Involving the support of faith-based organizations has also proven to be very successful as they often provide mentorship, structure and spiritual guidance which can play a significant role in rehabilitation.

Statistical data for types of programs that have a positive return on investment and reduce recidivism should also be utilized. With the introduction of ABI09, the average length of stay of the inmates will have a dramatic impact on the types of programs being implemented. The types of spaces designed to support a variety of functional programs is critical for the facility. Can the facility share multi-purpose rooms? Does each of the respective housing clusters require independent program areas? Will there be vocational training? These are all programmatic methodologies that need to be clearly vetted prior to designing the facility to encourage rehabilitation.



CREATING A REHABILITATIVE ENVIRONMENT CONTINUED

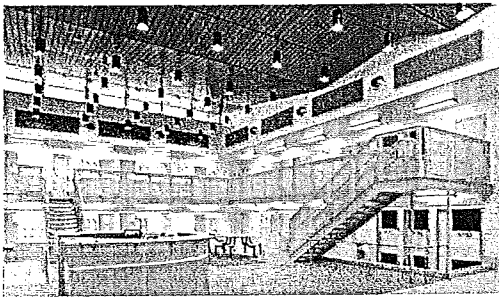
Appropriate Medical and Mental Health Services

The medical services required in these facilities are changing. Once designed for short period visits, correctional facilities are experiencing a growing trend of mental health issues requiring longer stays. Starting by listening to you, Lionakis will look at the growing trends and changes in your medical service programs and create spaces that consider and allow for these changing environments.

Creating a More Normalized Environment

Over the past few years, studies have shown that providing a more normalized environment in facilities with safe and durable products, has assisted in the management of inmates and promotes the opportunities for rehabilitation. Utilizing the correct color and size of furniture can be just as critical as the durability of the product. Studies have shown that the color utilized can have a profound effect on the management within a unit.

For example, normalized environments that consist of familiar materials like wood, familiar flooring materials, colors found in native surroundings such as earth tones and abundant natural light all contribute to calming behavior. Implementing these normalized environments have proven more conducive to supporting receptive change and influencing positive behaviors in inmates.



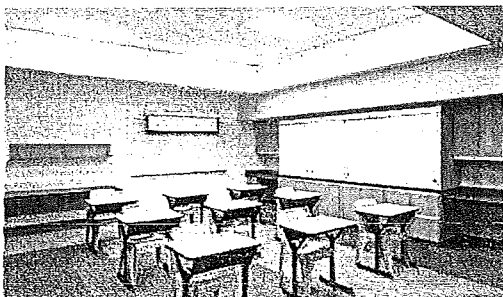
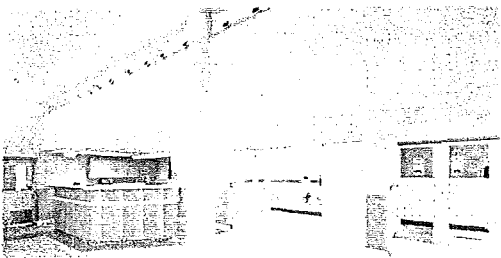
CASE STUDY REHABILITATIVE ENVIRONMENTS

YOUTH DETENTION FACILITY SACRAMENTO COUNTY

Sacramento County required a major expansion and renovation of their existing juvenile detention facility to relieve chronic overcrowding within the juvenile justice system and to provide for future population growth. The county utilized the direct supervision model and create a rehabilitative and normalized environment through familiar colors, textures and material selection so that the youth, the staff and the visiting public would feel more comfortable and secure in the facility.

Lionakis also assisted the County in programming to address the growing trend of special education and mental health needs in juvenile facilities. Lionakis met these needs by renovating an existing medical clinic to include a mental health and special needs unit and by creating a variety of classrooms and treatment spaces that are flexible to meet various programs.

Lionakis also designed flexible spaces appropriate for various support services and programs such as volunteer and faith-based groups to mentor, teach and encourage rehabilitation practices. All of these services were designed and constructed while keeping the facility fully functional during construction; the project was developed in four construction packages.



Staff Proposed: Submit resumes of staff within your firm will assign to the project described herein including: years with your firm, licensing, professional organizations, experience, past correctional projects and their role. County will be looking for confirmation that your firm has in its employment at least one full-time LEED Accredited professional who will be assigned to work on this project.

COLLABORATIVE TEAM

At Lionakis, your project team will remain consistent from the inception of the design through the completion of construction. Our approach to staffing is to identify the specific correctional experience and qualifications of each staff member. We pride ourselves on assigning experienced, higher level team members who can bring knowledge and leadership to your project.

Additionally, we have staffed your team based on the locality of the major subconsultants. We believe responsive service is important on a complex project like this. Our team is committed to being on-site quickly, providing your project with a team dedicated to personal, responsive service. The local mechanical and plumbing engineer, Axiom Engineers Inc., will also be supported by Capital Engineering, who will provide technical coordination, peer review, specifications and QA/QC backchecks. Capital Engineering has extensive experience designing large and complex correctional projects and is committed to supporting Axiom throughout the life of the project, ensuring your project has the resources and expertise needed to produce well designed, highly efficient systems.



FOSTERS TEAMWORK

"It is refreshing to work with an organization like yours that foster teamwork. I particularly wanted to point out and express my sincere appreciation for the professionalism that Maynard Feist has given to the project. Maynard has been the key contact person between the General Contractor, Probation and our department since the start of the programming phase of the project."

Marjorie Rist
Chief Probation Officer
Yolo County Probation

HANDS-ON PRINCIPAL EXPERTISE

Your project will benefit from our commitment to hands-on Principal expertise. Maynard Feist, Principal-in-Charge, will take an active role in designing and overseeing the success of your new jail facility. With more than 24 years of correctional experience, Maynard leads the Lionakis Correctional Team and is the go-to source for correctional expertise and advice.

From small juvenile renovation projects to large new jail facilities, Maynard offers his expertise and suggestions to enhance each project based on proven practices.

LEED ACCREDITED PROFESSIONALS TEAM

Lionakis and many of our selected consultants share your passion for sustainable design. In fact, the Lionakis team includes nine full time LEED Accredited Professionals. Recognizing your commitment to sustainable design, we have also included our Director of Sustainability, Jennifer Wehling, to serve as your Sustainability Specialist. She will assist you in meeting all of your sustainability and LEED goals.

TEAM COMMITTED TO SUSTAINABILITY

Nine of our team's full time team members are LEED Accredited Professionals!

**Please refer to the following pages for the requested project team resumes.*

LIONAKIS

MAYNARD FEIST

PRINCIPAL-IN-CHARGE/LEAD

CORRECTIONAL DESIGNER

As a Principal at Lionakis, Maynard Feist brings more than 31 years experience to your team. His expertise and practical knowledge of construction pairs with his deep understanding of correctional facility architecture to deliver projects that exceed our clients' expectations. As a stickler for quality control and adhering to schedules, Maynard is a hands-on leader who encourages innovative thinking from his team. His ability to work collaboratively with his clients, general contractors and construction managers will greatly help in the successful completion of the project.

RELEVANT PROJECT EXPERIENCE

San Joaquin County

AB900 - 1280 Bed Jail Expansion Project | French Camp, CA

Stanislaus County

192 Bed Jail Housing Replacement | Modesto, CA

Juvenile Commitment Facility Master Plan | Modesto, CA

60 Bed Juvenile Commitment Facility | Modesto, CA

Sacramento County

60 Bed Warren E. Thornton Youth Center | Sacramento, CA

428 Bed Sacramento County Youth Detention Facility Multi-Phased Expansion and Renovation | Sacramento, CA

Butte County

480 Bed Jail Addition | Oroville, CA

Jail Kitchen Renovation | Oroville, CA

Long-Range Jail Master Plan | Oroville, CA

Jail Renovations Intake and Release | Oroville, CA

Yolo County

Youth Detention Facility | Woodland, CA

Monroe Jail Expansion and Renovation | Woodland, CA

Probation Administration Building | Woodland, CA

Minimum Security Remodel | Woodland, CA

Nevada County

Wayne Brown Correctional Facility | Nevada City, CA

Placer County

Medium/Maximum Security Housing Addition | Auburn, CA

Cook-Chill Central Kitchen | Auburn, CA

Multiple Jail Renovation Projects

Tehama County

Main Jail Expansion and Renovation | Red Bluff, CA

Juvenile Justice Facility | Red Bluff, CA

Jail Nedds Assessment and Masterplan | Red Bluff, CA

California Department of Corrections and Rehabilitation

Emergency Bed Program—14 Different Sites | Various Cities, CA

Sutter County

Multiple Jail Expansion and Renovation Projects | Yuba City, CA

Long-Range Facilities Master Plan | Yuba City, CA

Jail Feasibility Study and Master Plan | Yuba City, CA

Shasta County

Juvenile Rehabilitation Facility | Redding, CA

YEARS WITH FIRM:

24

REGISTRATION

1992/Architect, California C23115

LEED Accredited Professional

EDUCATION

Associate of Science in Architectural
Drafting and Design, North Dakota State
School of Science, Wahpeton, ND, 1981

PROFESSIONAL ORGANIZATIONS

American Institute of Architects (AIA)

Coalition for Adequate School Housing
(CASH)

American Corrections Association (ACA)

LIONAKIS

RICHARD HOERNER PROJECT MANAGER

As an Associate at Lionakis, Richard Hoerner offers your project more than 27 years of architectural experience, five of which have been dedicated to managing correctional projects. He has a wide range of experience in specialized project management, architectural design and construction administration for various market sectors, with specialized expertise in correctional projects. This includes managing architecture and engineering teams through the design and construction documentation process, securing approvals from governing authorities, making presentations to government agencies and public groups, overseeing construction contract administration tasks and project close-out procedures.

RELEVANT PROJECT EXPERIENCE

San Joaquin County

AB900 - 1280 Bed Jail Expansion | French Camp, CA

Stanislaus County

192 Bed Jail Housing Replacement | Modesto, CA

Juvenile Commitment Facility Master Plan | Modesto, CA

60 Bed Juvenile Commitment Facility | Modesto, CA

Sacramento County

428 Bed Sacramento County Youth Detention Facility Multi-Phased Expansion and Renovation | Sacramento, CA

Sutter County

Phase II AB900 Concept Study | Yuba City, CA

Sutter County Jail Seismic Evaluation | Yuba City, CA

Yolo County

Monroe Jail Expansion and Renovation | Woodland, CA

AB900 Concept Study | Woodland, CA

Shasta County

Juvenile Rehabilitation Facility | Redding, CA

State of California, Department of Forestry and Fire Protection

Hollister Air Attack Base | Hollister, CA

Kaiser Permanente

Point West Medical Office Building | Sacramento, CA

U.S. Army Corps of Engineers

Repair Community Support Center, Bldg. 340 | Nellis AFB, NV*

**Indicates experience prior to joining Lionakis.*

YEARS WITH FIRM

5

REGISTRATION

1981/Architect, California C12358

National Council of Architectural
Registration Boards (NCARB) Certified

LEED Accredited Professional

EDUCATION

Bachelor of Architecture

University of Cincinnati, 1976

PROFESSIONAL AFFILIATIONS

American Institute of Architects (AIA)

LIONAKIS

TYRONE COATS PROJECT ARCHITECT

As a Project Architect with Lionakis, Tyrone Coats offers your project more than eight years of architectural experience. As a talented and highly skilled professional in the industry, Tyrone has focused his strengths in the correctional market sector and brings strong leadership skills and a passion for great design. His ability to organize and manage resources has developed a proven track record of projects that meet schedules and budgets.

RELEVANT PROJECT EXPERIENCE

Stanislaus County

192 Bed Jail Housing Replacement | Modesto, CA
60 Bed Juvenile Commitment Facility | Modesto, CA

Sacramento County

60 Bed Warren E. Thornton Youth Center | Sacramento, CA
428 Bed Sacramento County Youth Detention Facility Multi-Phased Expansion and Renovation | Sacramento, CA

Yolo County

Monroe Jail Expansion and Renovation | Woodland, CA
Probation Office Building | Woodland, CA

Shasta County

Juvenile Rehabilitation Facility | Redding, CA

Placer County

King's Beach Health Clinic Emergency Generator Addition | Kings Beach, CA
Health and Human Services—DeWitt Center | Auburn, CA

Nellis Air Force Base

Nellis Air Force Base Building 1100 | Las Vegas, NV

Solano County

Suisun Veterans Hall | Suisun City, CA

Sacramento Local Conservation Corps

SLCC Center Headquarters | Sacramento, CA
Beverage Container Recycling Sorting Facility | Sacramento, CA

Department of Motor Vehicles

Headquarters Sixth Floor Tenant Improvement | Sacramento, CA

Gregory Mountain Products

Office Tenant Improvements | Sacramento, CA

Buckley Community School

Additions & Free Standing Gymnasium | Buckley, MI*

Northwest Michigan Community College

Two Story Classroom Building | Traverse City, MI*

Church of Latter-Day Saints

Latter-Day Saints Church | Cadillac, MI*

Panera Breads

Facade and Tenant Improvement | Sacramento, CA*

Rotunda Office Building

Historical & Seismic Retrofit | Oakland, CA*

Rossmoor Senior Community

Administration Building & Theater | Walnut Creek, CA*

*Indicates experience prior to joining Lionakis.

YEARS WITH FRIM

7

REGISTRATION

2005/Architect, California C30440
LEED Accredited Professional BD+C
CAL-EMA Trained

EDUCATION

Associates in Architecture and Computer Aided Drafting, Phoenix Institute of Technology, 1992

PROFESSIONAL ORGANIZATIONS

American Institute of Architects (AIA)

LIONAKIS

DARRON HUNTINGDALE STRUCTURAL ENGINEER

As a Senior Project Manager at Lionakis, Darron Huntingdale brings more than 17 years of engineering experience to your team. His design experience includes Concrete Masonry Units (CMU), "waffle plate" and Double T's renovations and repairs, one to four story wood structures, multi-story steel structures, concrete tilt-up design and retrofit, as well as cast-in-place concrete. Additionally, Darron has direct experience with correctional housing, giving him knowledge of policies and procedures that apply to your project.

RELEVANT PROJECT EXPERIENCE

San Joaquin County

AB900 - 1280 Bed Jail Expansion | French Camp, CA

Stanislaus County

192 Bed Jail Housing Replacement | Modesto, CA

Juvenile Commitment Facility Master Plan | Modesto, CA

60 Bed Juvenile Commitment Facility | Modesto, CA

Shasta County

Juvenile Rehabilitation Facility | Redding, CA

County of Lassen

New Susanville Courthouse | Susanville, CA—*LEED Silver*

State of California, Department of General Services (DGS)

Department of Motor Vehicles Headquarters Third Floor Seismic Retrofit and Renovation
Sacramento, CA—*Registered with certification goal of LEED Silver*

Solano County

Suisun Veterans Hall | Suisun City, CA

Library Adaptive Reuse | Fairfield, CA

ADA Upgrades | Fairfield, CA

Sacramento Municipal Utilities District (SMUD)

Energy Management Center Upgrades | Sacramento, CA

PG&E

Grid Control Center | Vacaville, CA

Electric Operations Facility | Auburn, CA

Electric Operations Facility | Concord, CA

Kaiser Permanente South Sacramento Medical Center

Hospital Expansion | Sacramento, CA

Outpatient Trauma Clinic | Sacramento, CA

Hospital Tower Expansion | Sacramento, CA

Kaiser Permanente Stockton Medical Offices

Hammerton West Medical Offices—New Construction | Stockton, CA

Kaiser Permanente Sacramento Medical Offices

Wyndham Medical Office Building | Sacramento, CA

Kaiser Permanente Modesto Medical Offices

Bangs Avenue Medical Office Building—Tenant Improvement | Modesto, CA

Kaiser Permanente Modesto Medical Center

Modesto Medical Office Building | Modesto, CA

Feather River Community College District

Feather River College Learning Resource Center | Quincy, CA

YEARS WITH FIRM

10

REGISTRATION

1999/Civil Engineer California C59012

2005/Structural Engineer California 54788

Structural Engineering Certification Board
1229-0705

EDUCATION

Bachelor of Science in Civil Engineering,
California State University, Sacramento,
1995

PROFESSIONAL ORGANIZATIONS

Structural Engineers Association of
Central California (SEAOCC)

LIONAKIS

PAULA DESIDERI INTERIOR DESIGNER

As a Senior Associate at Lionakis, Paula Desideri brings more than 14 years of experience to your project. Paula's expertise includes a wide array of interior design services, including space planning, finish selection, institutional furniture layout, construction documents, construction administration and detailing primarily for local and federal government projects.

Paula ensures that design excellence, innovation, and sustainable practices are pursued on every project she leads. Additionally, she makes certain that full scope design strategies are developed to meet client's needs and budgets appropriately on all projects.

RELEVANT PROJECT EXPERIENCE

Building Solutions

Travis Air Force Base-Building 933 and 934 | Fairfield, CA

Naval Facilities Engineering Command (NAVFAC)

Bridgeport Mountain Warfare Training Center—Fitness Center Expansion

Bridgeport, CA

Bridgeport Mountain Warfare Training Center—Canopy Addition | Bridgeport, CA

Bridgeport Mountain Warfare Training Center—90-unit Storage Facility | Bridgeport, CA

Bridgeport Mountain Warfare Training Center—Modular Family Resource Building

Bridgeport, CA

County of Lassen

New Susanville Courthouse | Susanville, CA—*LEED Silver*

Tuolumne County

New Sonora Courthouse | Sonora, CA

Jones Lang LeSalle

IRS Headquarters Building | Sacramento, CA

City of Sacramento

North Natomas Fire Station #43 | Sacramento, CA—*Registered with certification goal of LEED Silver*

North Natomas Fire Station #43 Specifications | Sacramento, CA

Police Department General Services and Development Services

Division Building | Sacramento, CA

Placer County

Fulweiler Administrative Annex | Auburn, CA

State of California Department of General Services (DGS)

State Office Building at Butterfield Way | Sacramento, CA—*LEED Silver*

Department of Motor Vehicles Headquarter Sixth Floor Renovation | Sacramento, CA

Registered with certification goal of LEED Silver

Cornish & Carey State Contract

Department of Corrections Training Center | Sacramento, CA

Department of Food and Agriculture Food and Grain Inspection Station | Sacramento, CA

Department of Water Resources Lab/Warehouse | Sacramento, CA

Department of Consumer Affairs Headquarters Building | Sacramento, CA

Department of Consumer Affairs Bureau of Home Furnishings
and Thermal Insulation | Sacramento, CA

Office of Statewide Publishing | Sacramento, CA

Office of Administrative Law | Sacramento, CA

YEARS WITH FIRM

14

REGISTRATION

National Council for Interior Design
Qualification (NCIDQ) 018343

Certified Interior Designer (CID) 5991

LEED Accredited Professional

EDUCATION

Bachelor of Arts, Interior Design
California State University, Sacramento,
1998

PROFESSIONAL ORGANIZATIONS

Sacramento Building Owners and
Managers Association (BOMA)

Sacramento Metro Chamber of
Commerce, Leadership Sacramento,
Alumni 2006

Cottage Housing Inc.

– Board Member (2008-2010)

River City Food Bank

– Board Member (2011-Present)

LIONAKIS
PETER ROBINSON
SPECIFICATIONS WRITER

As a Project Manager at Lionakis, Peter Robinson brings more than 32 years of extensive experience in specification writing, project management, quality control and construction administration for significant California correctional projects. He brings your project technical expertise and a proven ability to integrate developed project design standards throughout your required documents.

Peter's extensive experience in writing specifications is extremely valuable to clients as he can recommend products and finishes best suited to the individual's specific project. As your Specification Writer, Peter utilized our specifications library to incorporate sustainable products and finishes. He is highly knowledgeable on the impacts of how these products exert on the environment.

RELEVANT PROJECT EXPERIENCE

San Joaquin County

AB900 - 1280 Bed Jail Expansion Project | French Camp, CA

Stanislaus County

60 Bed Juvenile Commitment Facility | Modesto, CA

192 Bed Jail Housing Replacement | Modesto, CA

Sacramento County

60 Bed Warren E. Thornton Youth Center | Sacramento, CA

428 Bed Sacramento County Youth Detention Facility Multi-Phased Expansion and Renovation | Sacramento, CA

Butte County

480 Bed Jail Addition | Oroville, CA

Jail Kitchen Renovation | Oroville, CA

Jail Renovations Intake and Release | Oroville, CA

Long-Range Jail Master Plan | Oroville, CA

Yolo County

Juvenile Detention Facility | Woodland, CA

Monroe Jail Expansion and Renovation | Woodland, CA

Probation Administration Building | Woodland, CA

Nevada County

Wayne Brown Correctional Facility | Nevada City, CA

California Department of Corrections and Rehabilitation (CDCR)

Emergency Bed Program | Various Sites, CA

Sutter County

Jail Expansion and Renovation | Yuba City, CA

Shasta County

Juvenile Rehabilitation Facility | Redding, CA

Del Norte County

Sheriff's Jail Expansion and Renovation | Crescent City, CA

YEARS WITH FIRM

22

REGISTRATION

1982/Architect, California C29508

LEED Accredited Professional

EDUCATION

Bachelor of Architecture, Kent State University with Honors, 1980

PROFESSIONAL ORGANIZATIONS

Construction Specifications Institute, Sacramento Chapter (CSI)

- President, 2006-2007
- President-elect, 2005-2006
- Board of Directors, 2002-2008
- Vice President, 2004-2005

LIONAKIS

JENNIFER WEHLING SUSTAINABILITY SPECIALIST

As the Director of Sustainability for Lionakis, Jennifer Wehling is the leader of the firm's sustainability efforts and primary resource for sustainable design knowledge. Her years of experience as a licensed architect in all phases of design and construction will result in tangible and positive impacts to your project. Her passion for sustainability pushes her to continually research the latest strategies and design methods in green building. She has been instrumental in implementing the concepts of sustainability into both the design and business philosophies at Lionakis.

Jennifer has extensive knowledge of the US Green Building Council's LEED rating system. She has overseen the process and documentation for nearly four million square feet of certified and registered projects at Lionakis. Her passion and expertise is stimulating to everyone involved; her leadership will be an asset on your project.

YEARS WITH FIRM

13

REGISTRATION

2002/Architect, California C29204

LEED AP BD+C

EDUCATION

Bachelor of Architecture,
California Polytechnic State University,
San Luis Obispo, 1999

Education Abroad, Florence Italy, 1998

PROFESSIONAL ORGANIZATIONS

American Institute of Architects (AIA)

United States Green Building Council
(USGBC), Northern California Chapter

RELEVANT PROJECT EXPERIENCE

County of Lassen

New Susanville Courthouse | Susanville, CA—*LEED Silver*

County of Los Angeles - Department of Health Services

High Desert Multi-service Ambulatory Care Center | Lancaster, CA—*Registered with the certification goal of LEED Gold*

City of Sacramento

North Natomas Fire Station #43 | Sacramento, CA—*LEED Silver*

University of California, San Francisco

Campus Data Center | San Francisco, CA—*LEED Silver*

Los Rios Community College District

Cosumnes River College Winn Center | Sacramento, CA—*Registered with the certification goal of LEED Platinum*

Lionakis

Lionakis 20th Street Building | Sacramento, CA—*LEED Certified*

State of California, Department of General Services

State Office Building at Butterfield Way | Sacramento, CA—*LEED Silver*

Department of Motor Vehicles Renovation and Reskin | Sacramento, CA—*Registered with the certification goal of LEED Silver*

LoftWorks

2600 Capitol Office Building | Sacramento, CA—*LEED Gold*

Sierra Joint Community College District

Tahoe Truckee Center | Truckee, CA—*LEED Gold*

AXIOM ENGINEERS

WILLIAM ESTES MECHANICAL ENGINEER

As a Mechanical Engineer with Axiom Engineers, William Estes has more than 31 years of extensive experience in HVAC design, computer based energy simulations and analysis, plumbing and process piping design, fire protection, refrigeration, water conservation, mechanical systems design, engineering economics and project management. As Manager of the Mechanical Systems Group, he oversees numerous projects, coordinates system configurations, coordinates with clients and engineering staff and provides overall direction and guidance for mechanical engineering services. He reviews drawings to ensure the client's project requirements are met and for compliance with the quality system, provides input in overall design concepts and follows the projects through construction.

YEARS WITH FIRM

28

REGISTRATION

1987/California, Mechanical Engineer
M24908

2002/Kansas, Professional Engineer 16881

EDUCATION

Bachelor of Science in Environmental
Engineering, California Polytechnic State
University, 1981

Graduate Studies, University of New
Mexico, 1984

RELEVANT PROJECT EXPERIENCE

County of Monterey

Main Jail Heating Piping Study | Salinas, CA

Main Jail Boiler Replacement | Salinas, CA

Adult Rehab Facility Heating and Ventilation Unit Replacement | Salinas, CA

Adult Rehab Facility—Domestic Water Boiler Replacement | Salinas, CA

Sheriff's Public Safety Building | Salinas, CA

Sheriff's Coroners Facility | Salinas, CA

Heath Department | Salinas, CA

Information Systems Building | Salinas, CA

AXIOM ENGINEERS

MARIO PEREZ

PLUMBING ENGINEER

As a Plumbing Engineer with Axiom Engineers, Mario has over 26 years of experience as a drafter and designer of plumbing and HVAC systems. He has extensive experience taking projects from initial concept through development of construction documents and into construction. Mario has designed a wide variety of projects including correctional facilities, multi-family residential, commercial offices buildings, churches, schools, wineries and healthcare facilities. He has designed numerous County of Monterey projects, including correctional facilities and offices.

RELEVANT PROJECT EXPERIENCE

County of Monterey

Main Jail (Adult Detention Facility)—Toilet/Shower Renovation Men's Pod | Salinas, CA

Main Jail (Adult Detention Facility)— Toilet/Shower Renovation Women's Pod | Salinas, CA

Main Jail Sewer System | Salinas, CA

Adult Rehab Facility—Rooftop Heating and Ventilating Units Replacement | Salinas, CA

Adult Rehab Facility—Domestic Hot Water Boilers, Flues and Storage Tanks Replacement|
Salinas, CA

Adult Rehab Facility—Water and Waste Piping for Men's and Women's Showers
Replacement | Salinas, CA

YEARS WITH FIRM

15

REGISTRATION

2004/ASPE Certified Plumbing Designer

EDUCATION

Hartnell College, 1986

PROFESSIONAL AFFILIATIONS

American Society of Plumbing Engineers

CAPITAL ENGINEERING CONSULTANTS, INC.

KEVIN STILLMAN MECHANICAL/PLUMBING ENGINEER PEER REVIEW

As a Project Manager for Capital Engineering Consultants, Kevin Stillman has served as Project Mechanical Engineer/ Project Manager for HVAC and plumbing on more than 100 projects since joining the firm in July of 2002. His responsibilities encompass providing day-to-day "hands-on" management for the mechanical engineering design team, development of design concepts, supervision and management of engineering and documentation including calculations and general project administration.

YEARS WITH FIRM

22

REGISTRATION

Mechanical Engineer/California M33498

EDUCATION

Bachelor of Science, Mechanical
Engineering, 2002, California State
Polytechnic University, San Luis Obispo

RELEVANT PROJECT EXPERIENCE

San Joaquin County

Jail Facility Expansion | French Camp, CA

Stanislaus County

Public Safety Center Expansion | Modesto, CA

Sacramento County

Juvenile Hall Renovation | Sacramento, CA

Rio Cosumnes Correctional Facility | Elk Grove, CA

California Department of Corrections and Rehabilitation

CMF Vacaville Mental Health Crisis Beds- 64-Bed Correctional Mental Health Facility
Vacaville, CA

California Institute for Women, 45 Bed Acute Intermediate Care Facility | Corona, CA

Lompoc Federal Correctional Complex

Energy Efficiency Upgrades | Lompoc, CA

PROFESSIONAL AFFILIATIONS

American Society of Heating, Refrigerating
and Air Conditioning Engineers

KEN RUBITSKY & ASSOCIATES

KEN RUBITSKY

ELECTRICAL ENGINEER

As Principal at Ken Rubitsky & Associates, Ken Rubitsky has 30 years of comprehensive electrical design and construction experience. His experience includes 28 years working on correctional projects and an extensive background in government, commercial office building, data center, retail center, and medical facilities design. Ken has worked with high-rise, mid-rise, and low-rise construction and is proficient with emergency power, power distribution systems, energy management and life safety. More than sixteen years of design and build field engineering experience attributes to Ken's ability to observe electrical construction and make affirmative field decisions while maintaining project schedules and budgets.

RELEVANT PROJECT EXPERIENCE

Stanislaus County

192 Bed Jail Housing Replacement | Modesto, CA
60 Bed Juvenile Commitment Facility | Modesto, CA

Sacramento County

60 Bed Warren E. Thornton Youth Center | Sacramento, CA
428 Bed Sacramento County Youth Detention Facility Multi-Phased Expansion and Renovation | Sacramento, CA
RCCC Roger Bauman Facility | Sacramento, CA

Butte County

Jail | Oroville, CA
Jail Laundry | Oroville, CA
Kitchen Replacement | Oroville, CA
Sheriff's Office Generator Replacement | Oroville, CA

Yolo County

Monroe Jail Expansion and Renovation | Woodland, CA
Youth Detention Facility | Woodland, CA

Placer County

District Attorney Office | Auburn, CA
Placer County Jail Intake/Release | Auburn, CA
Jail | Auburn, CA
Municipal Court Offices | Roseville, CA

Tehama County

Juvenile Detention Facility | Red Bluff, CA
Dorm Expansion | Red Bluff, CA

Marin County

San Quentin Prison Tower #4 | San Quentin, CA
San Quentin Prison Dumbwater | San Quentin, CA

Shasta County

Juvenile Rehabilitation Facility Campus Planning | Redding, CA
Building 8 | Placer County, CA

California Department of Corrections & Rehabilitation

Represa Management Yards | Folsom, CA
Folsom Prison Guard Towers | Folsom, CA
Prison Tower #4 | San Quentin, CA
San Quentin Prison Tower #4 | San Quentin, CA
San Quentin Prison Dumbwater | San Quentin, CA
Guard Towers | Folsom, CA

YEARS WITH FIRM

19

REGISTRATION

1984/Electrical Engineer, California 11798
Registered in 31 Additional States

EDUCATION

Bachelor of Science in Electrical and Electronic Engineering, California State University, Sacramento, 1981

PROFESSIONAL AFFILIATIONS

National Society of Professional Engineers (NSPE)
California Society of Professional Engineers (CSPC)
City of Sacramento Development Services, Electrical Code Advisory and Appeals Board Member

RBF CONSULTING

DONALD GALLAGHER CIVIL ENGINEER

As a Principal at RBF Consulting, Donald Gallagher bring over seven years of Civil Engineering experience. Donald is a LEED Accredited civil engineer with experience in a wide range of site development projects, including detention facilities, hospitals, and other public improvement projects. He is experienced in the use of both AutoCAD and Microstation for the layout and design of grading plans, underground utility systems, drainage plans and roadways.

He is also responsible for the implementation of LEED principles for site development projects, and providing Storm Water Pollution Prevention Plan (SWPPP) development services for institutional facilities, schools, commercial projects, solar developments and residential sites.

RELEVANT PROJECT EXPERIENCE

County of Calaveras

Calaveras County Adult Detention Center | San Andreas, CA

City of Marina

The Dunes on Monterey Bay Mixed-Use Site Development | Marina, CA

Hospital Expansion | Marin County, CA

County of El Dorado

El Dorado County Animal Shelter | El Dorado, CA

Monterey County

City of Salinas Police Department Preliminary Design | Salinas, CA

Salinas Valley Memorial Hospital Replacement and Expansion | Salinas, CA

County of Sacramento

South McClellan District Roadway Improvements | McClellan, CA

Vanir Construction Management

Sacramento Metropolitan Fire District Fire Training Center – Phase I

Rancho Cordova, CA

YEARS WITH FIRM

7

REGISTRATION

2010/ Civil Engineer California 76718

LEED Accredited Professional

Qualified SWPPP Developer/Practitioner
(QSD/QSP), CA, 23231

EDUCATION

Bachelor of Science, Civil Engineering,
University of California, Davis, 2007

PROFESSIONAL AFFILIATIONS

Member, American Society of Civil
Engineers (ASCE)

US Green Building Council, Northern
California Chapter, Capital Branch, Vice
Chair

RELIABLE COST ENGINEERING (RCE)

DAVID HINRICHS COST ESTIMATOR

As the Owner and Estimator of Reliable Cost Engineering, David Hinrichs established a reputation for providing fast, accurate cost estimates from conceptual stage through bid and award. David routinely develops and manages project budgets ranging from \$50,000 to \$50 million. His 25 years of experience was started by estimating correctional institutions for the State Prison System.

Over the years he has continued to perform many estimates on County jails and Juvenile facilities. His expertise in conceptual estimating and cost modeling makes David an asset to any project team and insures that projects get off to a good start with workable budgets

Working closely with architectural firms throughout the State, David prepares budget estimates on a variety of projects including correctional facilities, school modernization, hospitals and office buildings. David's expertise in conceptual estimating and knowledge of all CSI divisions is a real asset. David develops detailed project cost models at each project's inception and manages them through project bid and award.

YEARS WITH FIRM

13

REGISTRATION

LEED Accredited Professional

EDUCATION

Bachelor of Science in Construction
Engineering Management, California State
University at Sacramento, 1985

RELEVANT PROJECT EXPERIENCE

San Joaquin County

Juvenile Hall Expansion | Stockton, CA

Stanislaus County

192 Bed Jail Housing Replacement | Modesto, CA

60 Bed Juvenile Commitment Facility | Modesto, CA

Sacramento County

60 Bed Warren E. Thornton Youth Center | Sacramento, CA

428 Bed Sacramento County Youth Detention Facility Multi-Phased Expansion and
Renovation | Sacramento, CA

Yolo County

Youth Detention Facility | Woodland, CA

Monroe Jail Expansion | Woodland, CA

Shasta County

Juvenile Rehabilitation Facility | Redding, CA

El Dorado County

Juvenile Detention Facility | South Lake Tahoe, CA

California Department of Forestry

Coalinga Forest Fire Station | Coalinga, CA

California State Prison Madera Firehouse | Madera, CA

Paso Robles Air Attack Base | Paso Robles, CA

Campo CDF Camp | Campo, CA

State of California

Prison Madera Firehouse | Madera, CA

Paso Robles Air Attack Base | Paso Robles, CA

Campo CDF Camp | Campo, CA

Tehama County

Juvenile Detention Facility | Red Bluff, CA

AVS ENGINEERS, INC.

DANIEL LEUNG

SECURITY SYSTEMS SPECIALIST

As the President of AVS Engineers, Daniel Leung has devoted over 22 years of his professional career to the design, engineering and installation of security electronics and low voltage systems for adult detention, juvenile correctional, secure/unsecure healthcare and detention facilities within the court and law enforcement systems at local, county and federal levels. Daniel has focused in delivering the best quality design services and top quality production in every aspect of the project proactively handling all design, installation and system commissioning issues.

Daniel provides the necessary leadership that translates into design excellence and quality deliverables and his attention to detail and concern for his clients have helped him build long lasting relationships and have earned him a reputation of trusted advisor and consultant at different governmental levels.

YEAR WITH FIRM
12

REGISTRATION
Low Voltage, California C7
High Voltage, California C10

EDUCATION
California State University, Los Angeles,
Bachelor of Science, Electrical Engineering,
1988

PROFESSIONAL AFFILIATIONS
American Correctional Association
American Jail Association
National Fire Protection Association
Institute of Electrical and Electronics
Engineers

RELEVANT PROJECT EXPERIENCE

California Department of Corrections and Rehabilitation
Juvenile Correctional Facility Security System Replacement | Statewide, CA

San Bernardino County
High Desert Juvenile Detention Center | San Bernardino, CA
Central Juvenile Hall | San Bernardino, CA
Glen Helen Rehabilitation Center Security Master Plan & Dorm Expansion
San Bernardino, CA
On-call County-wide Low Voltage Security Design & Consulting | San Bernardino, CA

Sacramento County
On-call County-wide Low Voltage Security Design & Consulting | Sacramento, CA

Adelanto Detention Center Expansion
Full Design and Commissioning of Entire Security System for 1000 Bed Jail Facility
Adelanto, CA

West Valley Detention Center
Installed Security/Communication/Fire Alarm System for 1200 Cell Adult Detention Center
San Bernardino, CA

Sacramento County
Sacramento County Main Jail Security Upgrade | Sacramento, CA

Santa Barbara County
Santa Barbara Main Jail Security Upgrades | Santa Barbara, CA

Napa County
Napa County Jail Security Upgrades | Napa, California
County-wide Facilities Security Design and Consulting | San Bernardino, CA

Stanislaus County
Stanislaus Honor Farm Jail Housing Addition | Stanislaus, CA
Security Hall Upgrade | Stanislaus, CA
60 Bed New Commitment Center | Stanislaus, CA

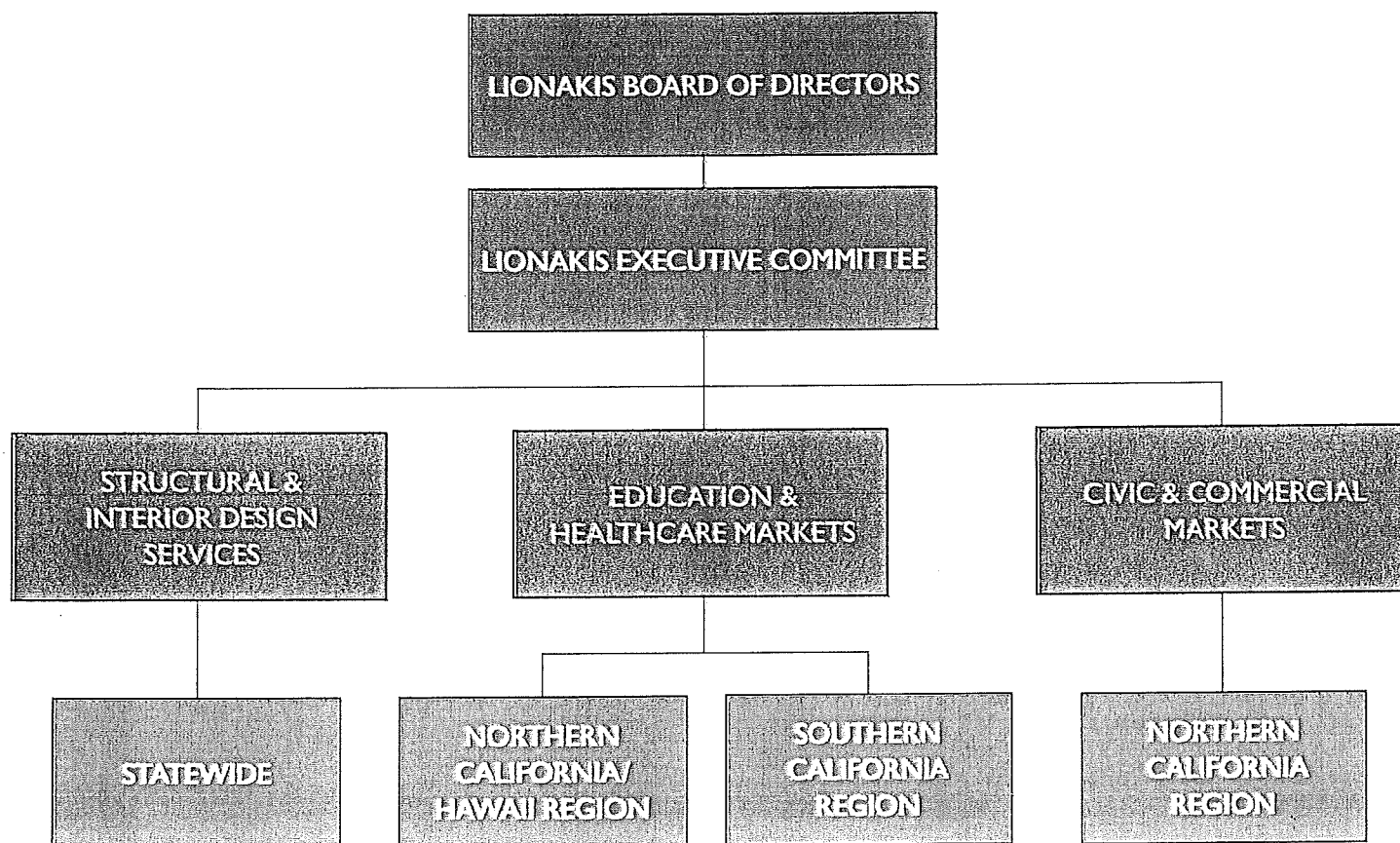
San Luis Obispo County
Juvenile Services Center | San Luis Obispo, CA

State of California
Folsom State Prison | Folsom, CA

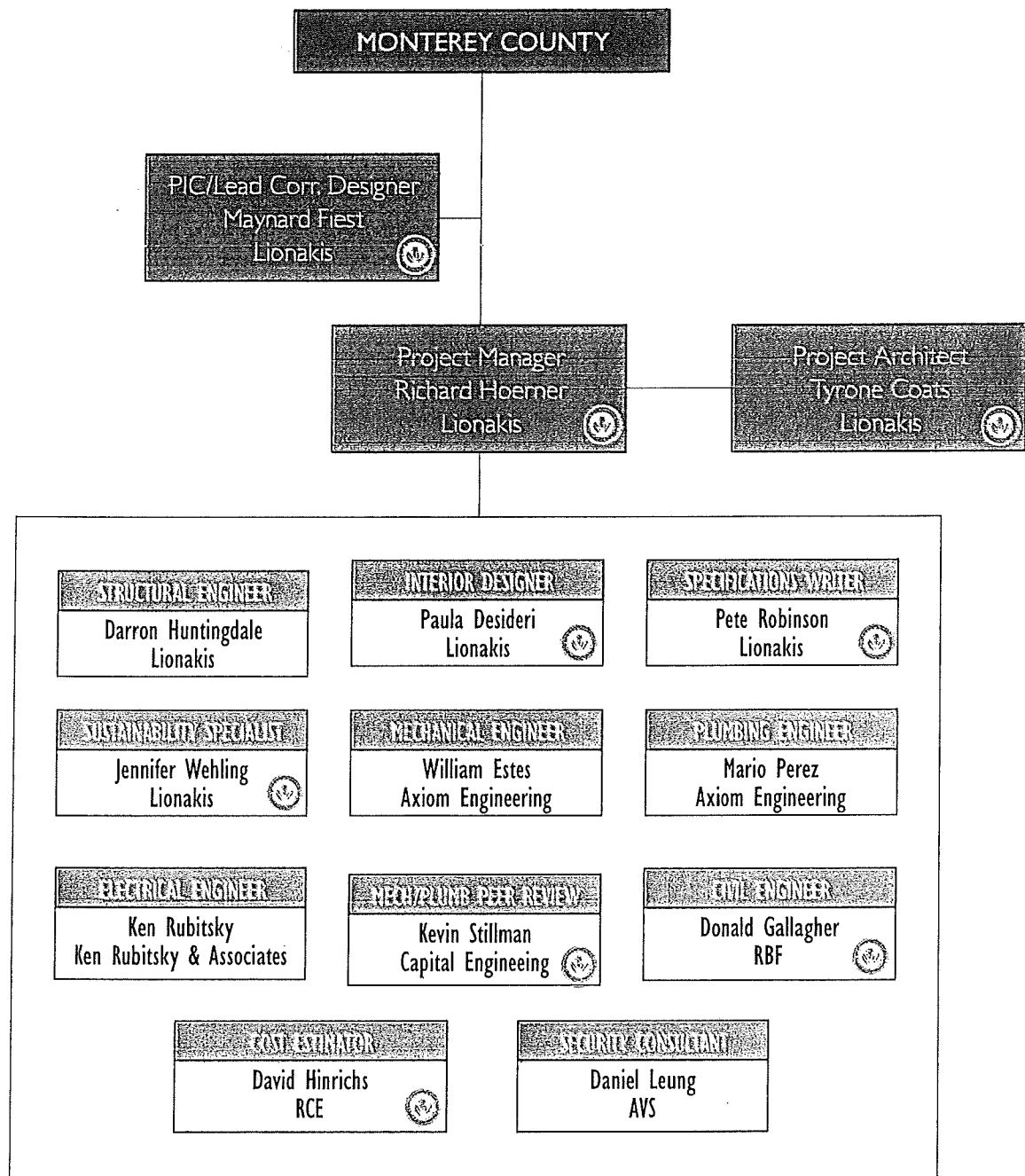
LIONAKIS

Org Chart: Submit your firm's organization chart.

FIRM ORGANIZATION



TEAM ORGANIZATION



 LEED Accredited Professional

Required Qualifications: Confirm that your firm has a minimum of (10) years experience leading and controlling the design and construction of correctional projects and that this experience was within the State of California with prisons of local community jails of similar size to this project. Provide a description of each project.

PROJECT NAME	DESCRIPTION	SQUARE FEET	START - COMPLETION DATES	SECURITY LEVEL	NO. OF BEDS	NO. OF SUPPORT & PROGRAM SPACES	SAME CONSULTANT TEAM MEMBERS
San Joaquin County Jail Expansion	New facility with ten 128 medium/max security adult detention housing units totaling 1,280 new beds. Scope includes in-custody administration facility, new support facilities, administration/staff services building, new Jail Central Control (JCC), a visitor's center and a new central plant.	293,200	2009 - On Hold (Funding)	<ul style="list-style-type: none"> • Medium Security Beds • Maximum Security Beds 	1,280	<ul style="list-style-type: none"> • Multiple Program Rooms, Housing, Medical and Mental Health spaces 	<ul style="list-style-type: none"> • Capital Engineering • Ken Rubitsky & Associates
Yolo County Monroe Jail Expansion	Major expansion and renovation to the existing county jail facility. Expansion includes new housing, a visitor's center, kitchen, laundry and site infrastructure. The facility also provides expansion and renovation to the intake, medical, mental health and staff support areas.	140,220	2009 - On Hold (Funding)	<ul style="list-style-type: none"> • Medium Security Beds • Maximum Security Beds 	318	<ul style="list-style-type: none"> • Mental Health Housing, Medical, Kitchen, and Multiple Program Rooms 	<ul style="list-style-type: none"> • Ken Rubitsky & Associates • RCE
Sacramento County Youth Detention Facility	Major expansion and renovation of the Sacramento County Youth Detention Facility in four phased projects. Scope includes new bed and housing units, intake and booking, medical and mental health suites, new central control, new administration area, staff support services, classrooms, outdoor recreation and kitchen and dining facilities.	204,360	2004-2011	<ul style="list-style-type: none"> • Medium Security Beds • Maximum Security Beds 	428	<ul style="list-style-type: none"> • Medical, Mental Health, Multi-purpose Rooms, Education, Vocational, Kitchen and Laundry spaces 	<ul style="list-style-type: none"> • Capital Engineering • Ken Rubitsky & Associates • RCE
Shasta County Juvenile Rehabilitation Facility	This SB81 funded, 43,368 square foot facility will provide 90 new beds in three housing units. Each housing unit will include screening, program and classroom space. The expansion also includes intake/release, central control, contact visiting, multi-purpose, medical services, a full-service kitchen and laundry. Support spaces for staff, including office, locker rooms and break rooms.	44,627	2010 - Estimated Completion 2013	<ul style="list-style-type: none"> • Medium Security Beds • Maximum Security Beds 	90	<ul style="list-style-type: none"> • Program Rooms, Multi-purpose Rooms, Medical, Kitchen, Laundry spaces and Intake Classifications 	<ul style="list-style-type: none"> • Ken Rubitsky & Associates • RCE

SIMILAR EXPERIENCE WITH IN 10 YEARS						
PROJECT NAME	DESCRIPTION	SQUARE FEET	START - COMPLETION DATES	SECURITY LEVEL	NO. OF BEDS	NO. OF SUPPORT & PROGRAM SPACES SAME CONSULTANT TEAM MEMBERS
Stanislaus County Honor Farm Barracks Replacement	A 28,900 square foot, 192 bed replacement facility will be a divided into three separate housing units with 4 secure dormitory rooms in each unit and an indirect supervision station and support spaces.	28,900	2011 - Estimated Completion 2013	<ul style="list-style-type: none"> Medium Security Beds 	192	<ul style="list-style-type: none"> Multi-purpose Program, Medical and Visitation spaces Ken Rubitsky & Associates RCE AVS
Stanislaus County Juvenile Commitment Center	The new commitment facility will be a 47,207 square foot 60-bed rehabilitation facility for court-committed minors. Housing includes 30-bed and 15-bed units for boys and a 15-bed housing unit for girls. The facility will also contain classrooms, a multi-purpose gymnasium, visitation area, full service kitchen, culinary instructional classroom, program rooms, administration and a secure recreation yard.	47,207	2007- Estimated Completion 2013	<ul style="list-style-type: none"> Medium Security Beds 	60	<ul style="list-style-type: none"> Education, Vocational, Multi-purpose, Culinary spaces Ken Rubitsky & Associates RCE AVS
Warren E. Thornton Youth Center	The 27,900 square foot addition increased the resident population from 50 beds to 110 beds. The addition includes housing units, school space, healthcare clinic, mental health offices, administration office, staff facilities, new kitchen, dining, visiting laundry, gymnasium and a renovation of existing housing and classrooms.	56,700	2003-2006	<ul style="list-style-type: none"> Medium Security Beds 	110	<ul style="list-style-type: none"> Education, Medical, Kitchen, Laundry, Multi-purpose and Mental Health spaces Capital Engineering Ken Rubitsky & Associates rce

Please refer to Section. 3 Project Experience & References for more detailed descriptions of each project.

Confirm that your firm has ten (10) years experience with direct contact with the Corrections Standards Authority (CSA), Board of State and Community Corrections (BSCC), California Department of Corrections and Rehabilitations (CDCR), and California State Fire Marshal (CSFM).

BSCC EXPERIENCE

Over the past 22 years, Lionakis has built an outstanding working relationship with both the Board of State and Community Corrections and the State Fire Marshal's office. We have worked closely with these unique State governing agencies on numerous juvenile and adult detention facilities. As you are aware, all correctional and I-3 occupancy projects require review and approval from BSCC from schematics through construction administration. Over the years, Lionakis has formed valued relationships with BSCC (formerly CSA) and have established professional respect for each other. Our comprehensive understanding and experience allows us to provide design solutions, as well as phasing recommendations, that meet all functional, programmatic and code related issues.

Throughout the design phase, a continual cross check of both physical and operational dialogue will occur with the stakeholders to address Title 15 and 24 requirements. Lionakis provides Monterey County the experience to address these relationships and assure that the developed programming requirements are incorporated into the built environment. While conceptual design scenarios are developed, it is imperative that your design team have the thorough knowledge and skills required to tackle these requirements at the onset of design.

CDCR EXPERIENCE

Lionakis has experience providing emergency bed replacements for more than 18 CDCR sites. This experience enabled us to work with the necessary agencies and learn CDCR's design requirements the principals of which can be directly related to your project. Additionally, in 2011 Lionakis led the design effort while participating in all three of the CDCR's Stockton California Healthcare Facility Design-Build competitions. Our team worked closely with CDCR for a year providing services such as: programming of existing infrastructure, providing recommendations for improvements, developing schematic drawings for facilities and assimilating the initial program data, site and operational information to ultimately establish preliminary conceptual planning for both site and buildings on new and renovated spaces for CDCR.



CDCR EXPERIENCE

Emergency Bed Replacement

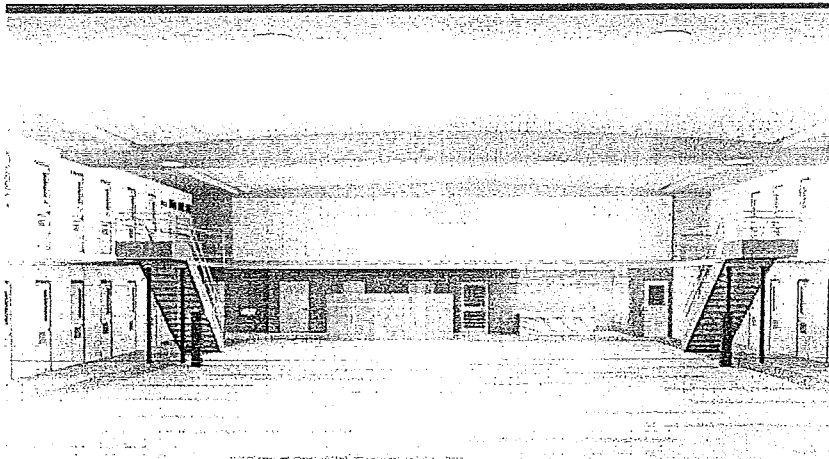
- Avenal State Prison | Avenal, CA
- California Institute for Men | Chino, CA
- California State Prison Corcoran, CA
- California State Prison Solano Vacaville, CA
- Chuckawalla Valley State Prison Blythe, CA
- Correctional Training Facility Soledad, CA
- Deuel Vocational Institute | Tracy, CA
- Ironwood State Prison | Blythe, CA
- Mule Creek State Prison | Lone, CA
- North Kern State Prison | Delano, CA
- Pleasant Valley State Prison Coalinga, CA
- Richard J. Donovan Correctional Facility | San Diego, CA
- Wasco State Prison | Wasco, CA
- California Correctional Institution Tehachapi | Tehachapi, CA
- Sierra Conservation Camp Budget Package | Jamestown, CA
- Pelican Bay State Prison Budget Package | Crescent City, CA
- San Quentin State Prison Budget Packages | San Quentin, CA

SECTION THREE

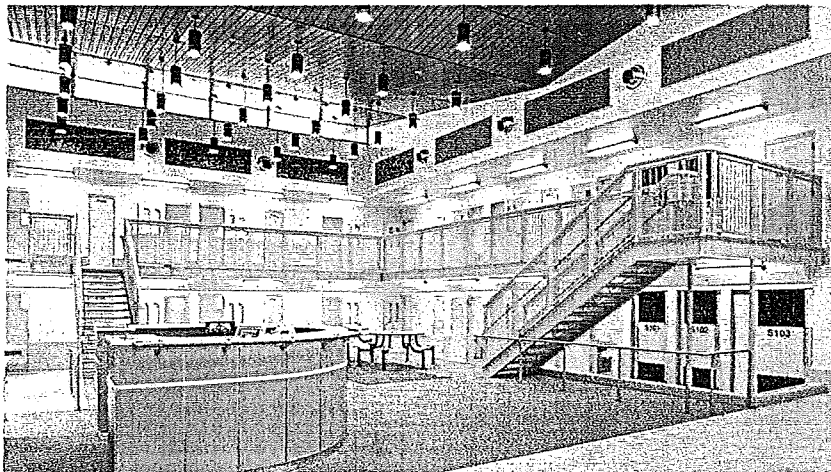
PROJECT EXPERIENCE AND REFERENCES

PROJECT EXPERIENCE & REFERENCES

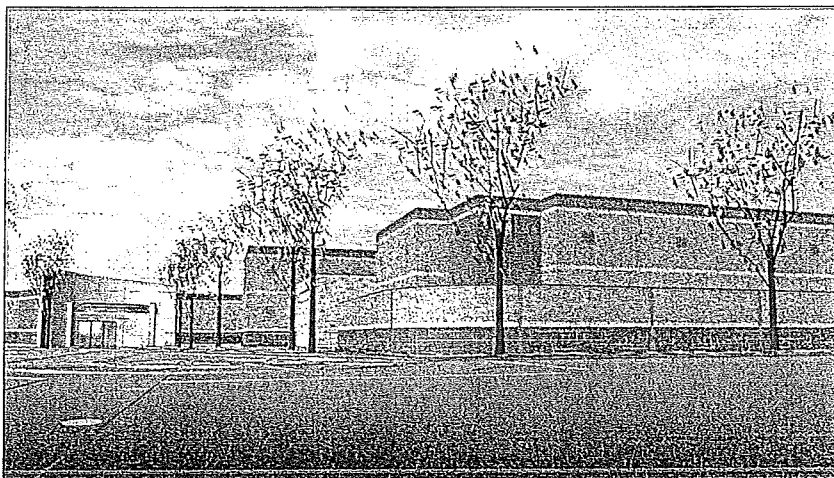
Experience: Provide a minimum of five (5) examples of past projects, of similar scope and size preferably. Include contact person(s) information including phone numbers, email address, and sites.



San Joaquin County | Jail Expansion



Sacramento County | Youth Detention Center



Yolo County | Monroe Jail Expansion and Renovation

ADULT DETENTION CENTERS

San Joaquin County

- Jail Expansion | French Camp, CA
- Jail Kitchen Project | French Camp, CA

Placer County

- Jail Addition and Remodel Phase I & II | Auburn, CA
- New Central Kitchen | Auburn, CA
- Minimum Security Housing Renovation Auburn, CA

Tehama County

- Women's Dorm Remodel Red Bluff, CA
- Jail Remodel and Additions Red Bluff, CA
- Sheriff's Department Front Entrance Security | Red Bluff, CA

Calaveras County

- Jail Addition and Master Plan San Andreas, CA

Yolo County

- Monroe Jail Expansion and Renovation | Woodland, CA
- Probation Administration Building Woodland, CA

Nevada County

- Wayne Brown Correctional Facility Nevada City, CA

Del Norte County

- Sheriff's Jail Renovation Sacramento, CA

Washoe County

- Jail Expansion | Reno, NV

Butte County

- Jail Kitchen Renovation | Oroville, CA
- Intake and Release Renovations Oroville, CA
- Housing Unit Addition | Oroville, CA
- Long Range Master Plan | Oroville, CA

Sutter County

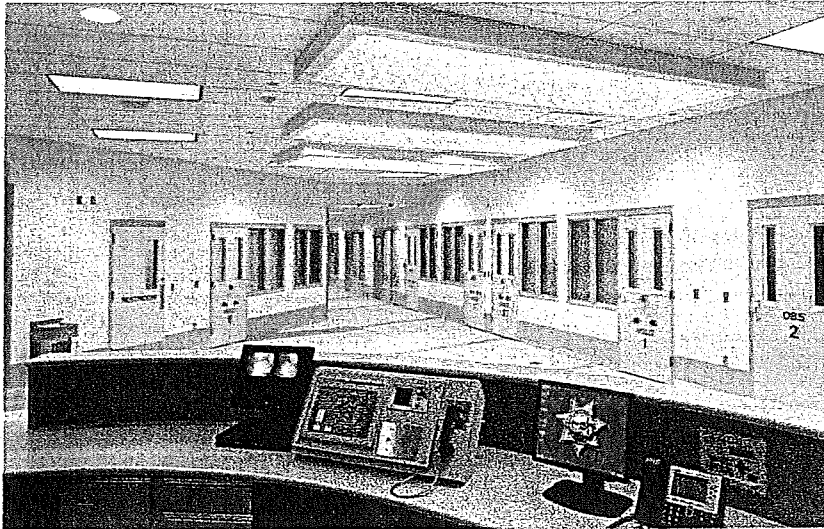
- Maximum Security Housing Addition Yuba City, CA
- Jail Needs Assessment | Yuba City, CA

Merced County

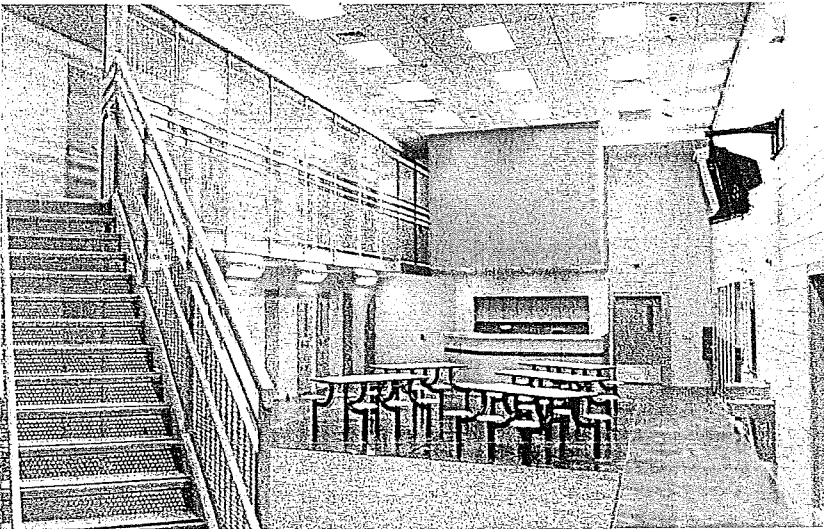
- Mental Health Facility | Merced, CA

Colusa County

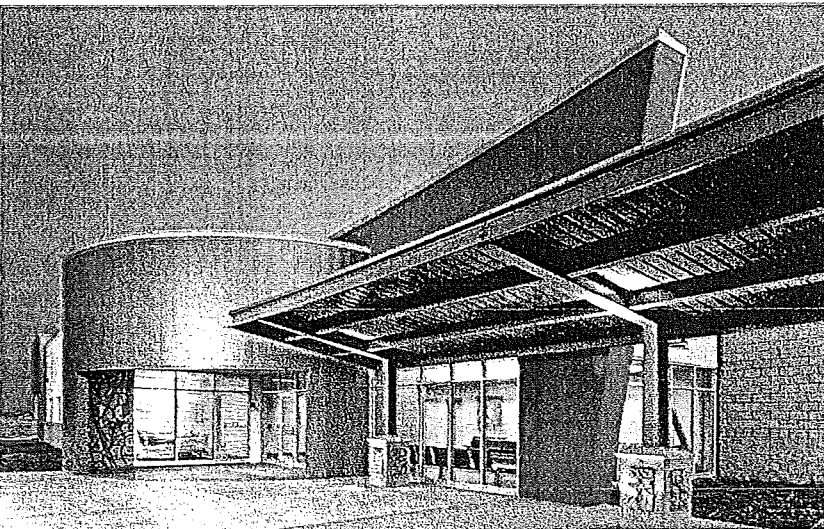
- Jail Renovation | Colusa, CA



Sacramento County | Juvenile Hall Expansion and Modifications



Yolo County | Youth Detention Facility



Yolo County | Youth Detention Facility

State of California, Department of Corrections & Rehabilitation Emergency Bed Program

- Avenal State Prison | Avenal, CA
- California Institute for Men | Chino, CA
- California State Prison Corcoran, CA
- California State Prison Solano
Vacaville, CA
- Chuckawalla Valley State Prison
Blythe, CA
- Correctional Training Facility
Soledad, CA
- Deuel Vocational Institute | Tracy, CA
- Ironwood State Prison | Blythe, CA
- Mule Creek State Prison | Ione, CA
- North Kern State Prison | Delano, CA
- Pleasant Valley State Prison
Coalinga, CA
- Richard J. Donovan Correctional
Facility | San Diego, CA
- Wasco State Prison | Wasco, CA
- California Correctional Institution
Tehachapi | Tehachapi, CA
- Sierra Conservation Camp Budget
Package | Jamestown, CA
- Pelican Bay State Prison Budget
Package | Crescent City, CA
- San Quentin State Prison Budget
Packages | San Quentin, CA

JUVENILE DETENTION CENTERS

Sacramento County

- Juvenile Hall Expansion and
Modifications | Sacramento, CA
- Warren E. Thornton Youth Center
Sacramento, CA
- Boys Ranch Study | Sacramento, CA

Stanislaus County

- Stanislaus County Juvenile Hall
Modesto, CA
- Stanislaus Juvenile Master Plan
Modesto, CA

Tehama County

- Tehama County Juvenile Hall
Red Bluff, CA

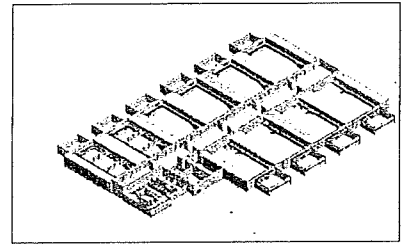
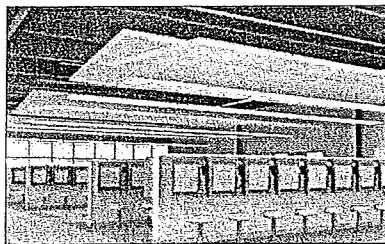
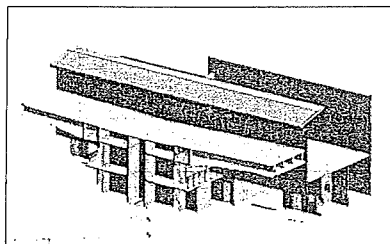
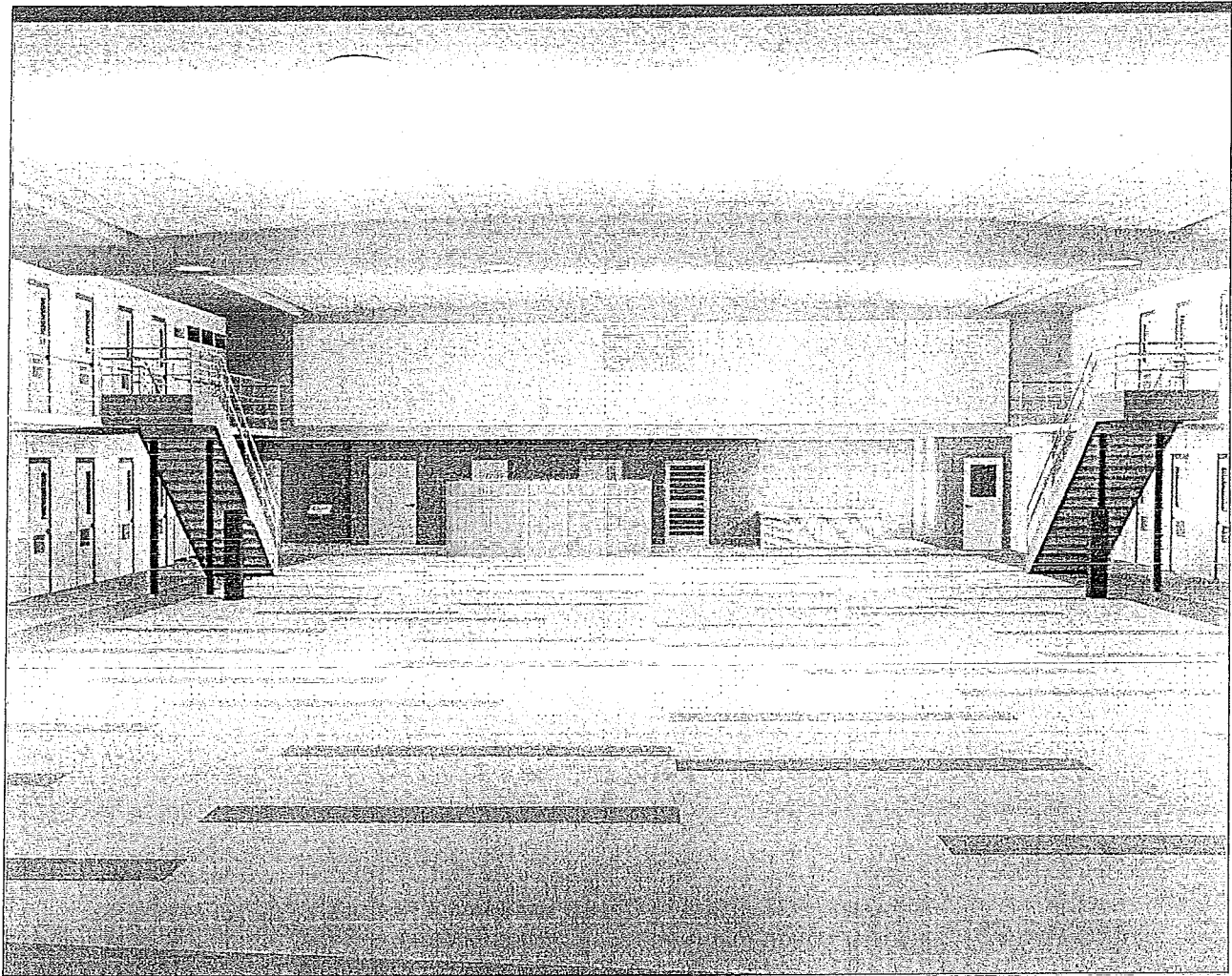
Yolo County

- Youth Detention Facility
Woodland, CA

Shasta County

- Juvenile Rehabilitation Facility
Redding, CA

**Please refer to the following pages
for related projects and the requested
information.*



SAN JOAQUIN COUNTY JAIL EXPANSION

CLIENT: San Joaquin County

SIZE: 293,200 square feet

LOCATION: French Camp, CA

SCOPE OF WORK:

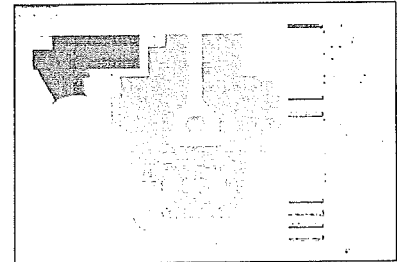
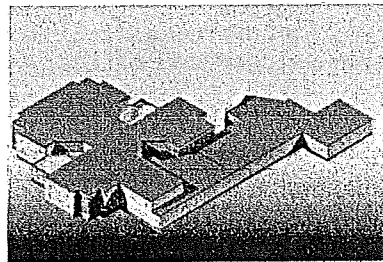
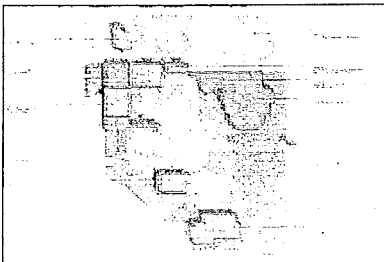
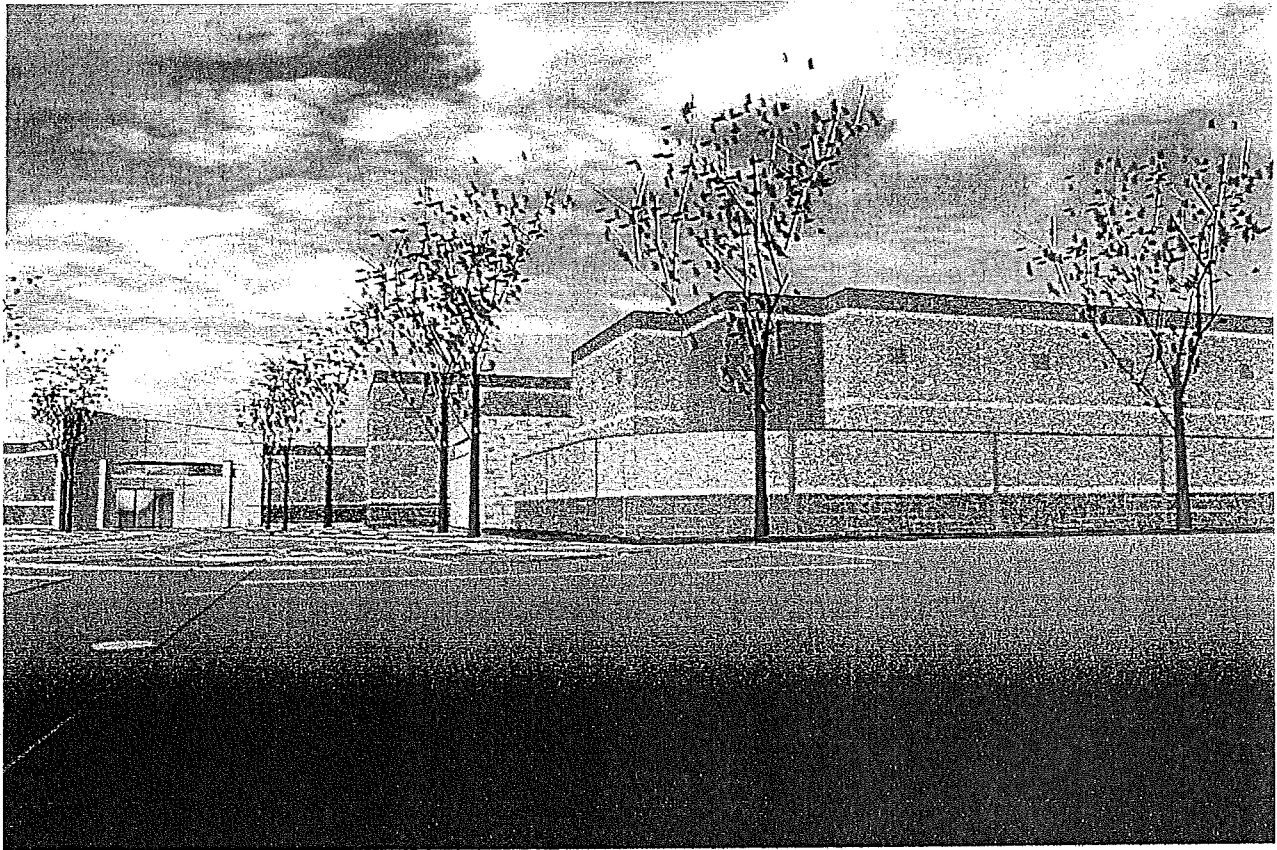
Lionakis is currently serving as the Architect of Record for the San Joaquin County Jail Expansion project. This new facility will include ten 128-bed medium/max security adult detention housing units. The project will provide a total of 1,280 new beds, in new, precast, modular maximum and medium housing components as well as in-custody administration facility and new support facilities. In addition, the project will include the Administration/Staff Services Building to accommodate the custody staff, the new Jail Central Control (JCC), a visitor's center to accommodate the new video visitation system and a central plant to house mechanical and electrical equipment necessary to support the expansion.

The county was successful in obtaining \$80 million bond funding through the first round of AB900 local jail funding awards.

REFERENCE:

County of San Joaquin
Gabe Karam, Director of Facilities
44 N. San Joaquin Street
Stockton, CA 95202
(209) 468-2181
gkaram@sjgov.org

LIONAKIS



MONROE JAIL EXPANSION

CLIENT: Yolo County

SIZE: 140,220 square feet

LOCATION: Woodland, CA

SCOPE OF WORK:

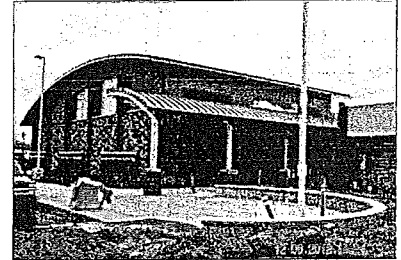
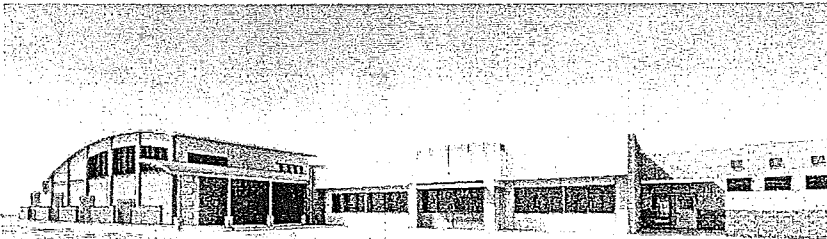
Yolo County's Monroe Jail faced severe overcrowding. Their outdated and inadequate facilities made the situation even more desperate. Lionakis was the architect of record for their major expansion and renovation to the existing county jail facility. Expansion includes new housing, visitor center, kitchen, laundry and site infrastructure. The facility also provides expansion and renovation to the intake, medical, mental health and staff support areas. The new mental health suite is located adjacent to the new medical area and is for more acute treatment. The existing adjacent housing unit will be converted to a step-down transitional mental health housing.

REFERENCE:

Terry Vernon, Deputy Director
625 Court Street, Room 203
Woodland CA, 95695
(530) 406-4870
terry.vernon@yolocounty.org

"I would like to express my appreciation to the Lionakis team for their professional and dedicated work."

Terry Vernon, Deputy Director
Yolo County Central Services Division



STANISLAUS COUNTY JUVENILE COMMITMENT FACILITY

CLIENT: Stanislaus County

SIZE: 47,207 square feet

LOCATION: Modesto, CA

SCOPE OF WORK:

As the Architect of Record, Lionakis is currently working with Stanislaus County to build its first Juvenile Commitment Facility. As one of several populous counties in California, Stanislaus was the only county without a commitment facility for minors. As a result, project funding was granted, including \$16 million from the state and an additional \$6 million in matching funds from the county. The commitment facility is one of the first of two SB 81 projects to be designed in California.

Expected to be complete in 2013, this new commitment facility will be a 47,207 square foot, 60-bed rehabilitation facility for court-committed minors. Housing includes a 30-bed and 15-bed unit for boys and a 15-bed housing unit for girls. The facility will also contain classrooms, a multi-purpose gymnasium, visitation area, full service kitchen, culinary instructional classroom, program rooms, administration and a secure recreation yard.

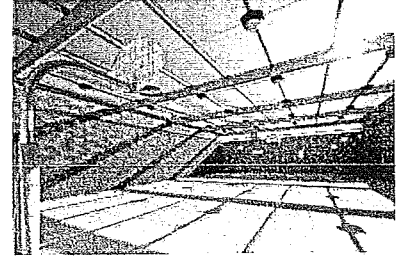
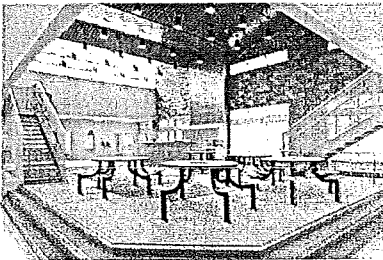
The new facility will help increase efficiency by reducing staff levels, reducing the annual operating costs of the main detention facility by \$7 million annually.

REFERENCE:

Patty Hill-Thomas, Assistant Chief
Executive Officer
1010 Tenth street, Suite 6800
Modesto, CA 95354
(209) 609-4334
ThomasP@stancounty.com

Jill Silva
Chief Probation Officer
2215 Blue Gum Avenue
Modesto, CA 95358
(209) 525-4503
SilvaJ@stancounty.com

LIONAKIS



SACRAMENTO COUNTY YOUTH DETENTION FACILITY

CLIENT: Sacramento County

LOCATION: Sacramento, CA

SIZE: 78,900 square feet (Expansion)
204,360 square feet (with
Renovation)

SCOPE OF WORK:

Lionakis served as the Lead Architect for the major expansion and renovation of the Sacramento County Youth Detention Facility. The project was split into four separate bid packages to accommodate phasing of occupied facility and eliminate the risk of losing grant funding.

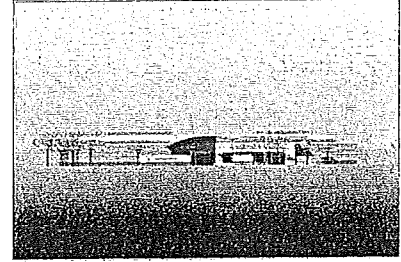
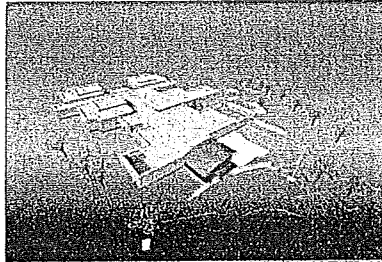
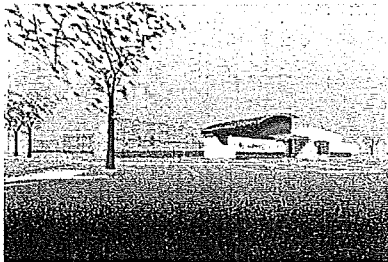
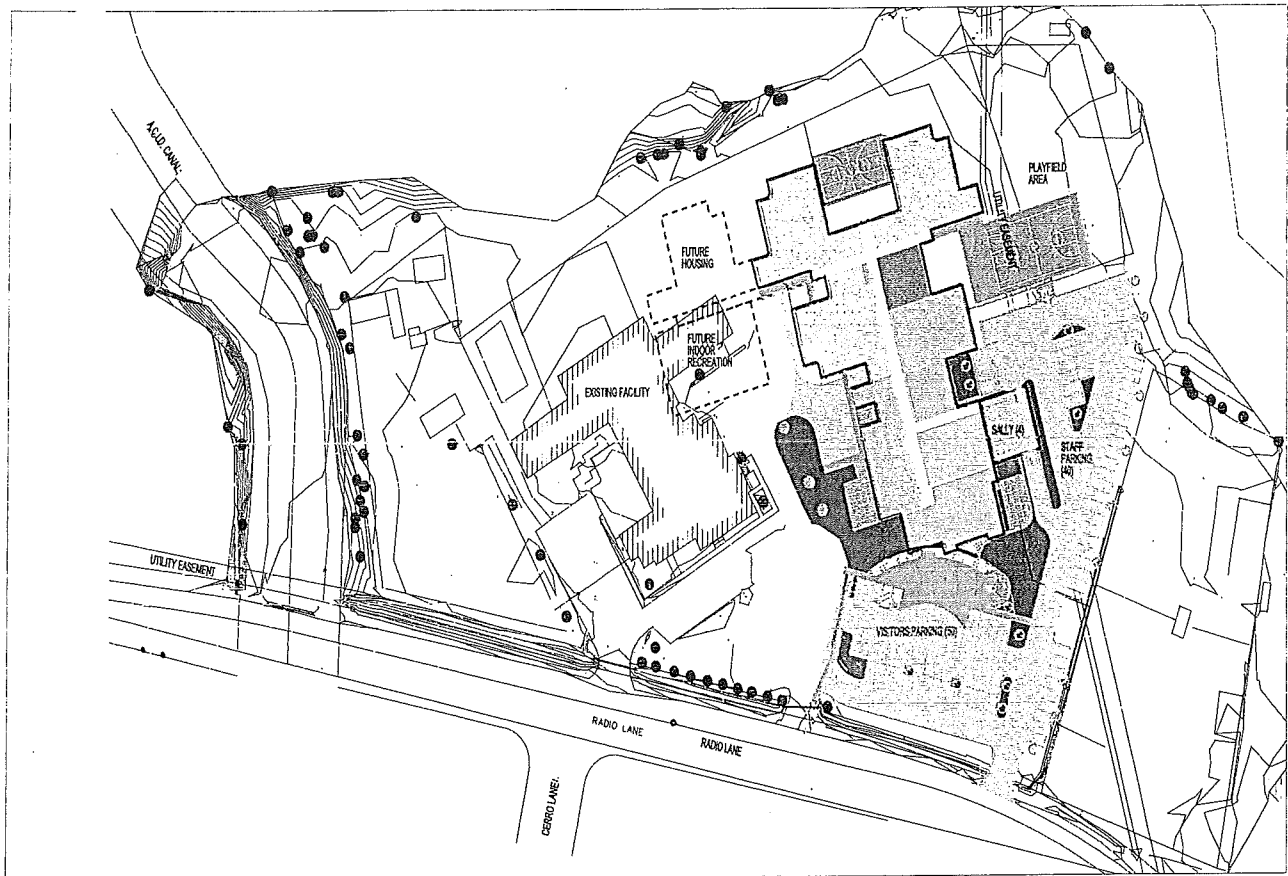
- **Package One:** three new secure podular-designed housing units, intake and booking, mental health suite, site improvements, infrastructure upgrades, vehicle sally port, central plant, public lobby and new central control.
- **Package Two:** new administration area, staff support services, training and warehouse addition
- **Package Three:** renovation and addition of classrooms to nine existing housing units, renovation of the kitchen, laundry and staff dining facilities, special-needs housing units, conversion of existing classrooms into offices and the addition of an infill medical services building.
- **Package Four:** detention facility consisting of 120 bed expansion to the four 30 bed high security housing units, utility tunnel extension and outdoor recreation yards and play field.

REFERENCE:

Chris Bryson, Project Manager
700 H Street
Sacramento, CA 95814
(916) 876-6304
brysonc@SacCounty.net

AWARDS:

2012 Justice Facility Review Award, The American Institute of Architects (AIA)
2012 AIA/AIA Justice Facilities Review
2007 Excellence in Structural Engineering Award, Structural Engineers Association of Central California (SEACCC)
2008 Justice Facility Review Award, The American Institute of Architects (AIA)



SHASTA COUNTY JUVENILE REHABILITATION FACILITY

CLIENT: Shasta County

SIZE: 44,627 square feet

LOCATION: Redding, CA

SCOPE OF WORK:

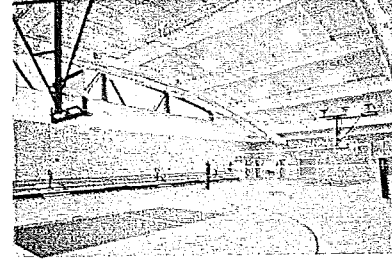
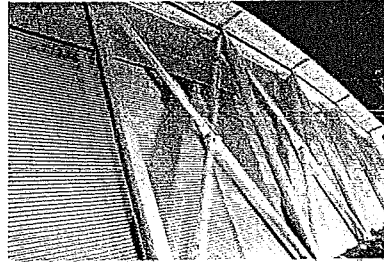
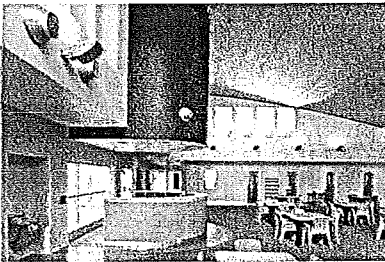
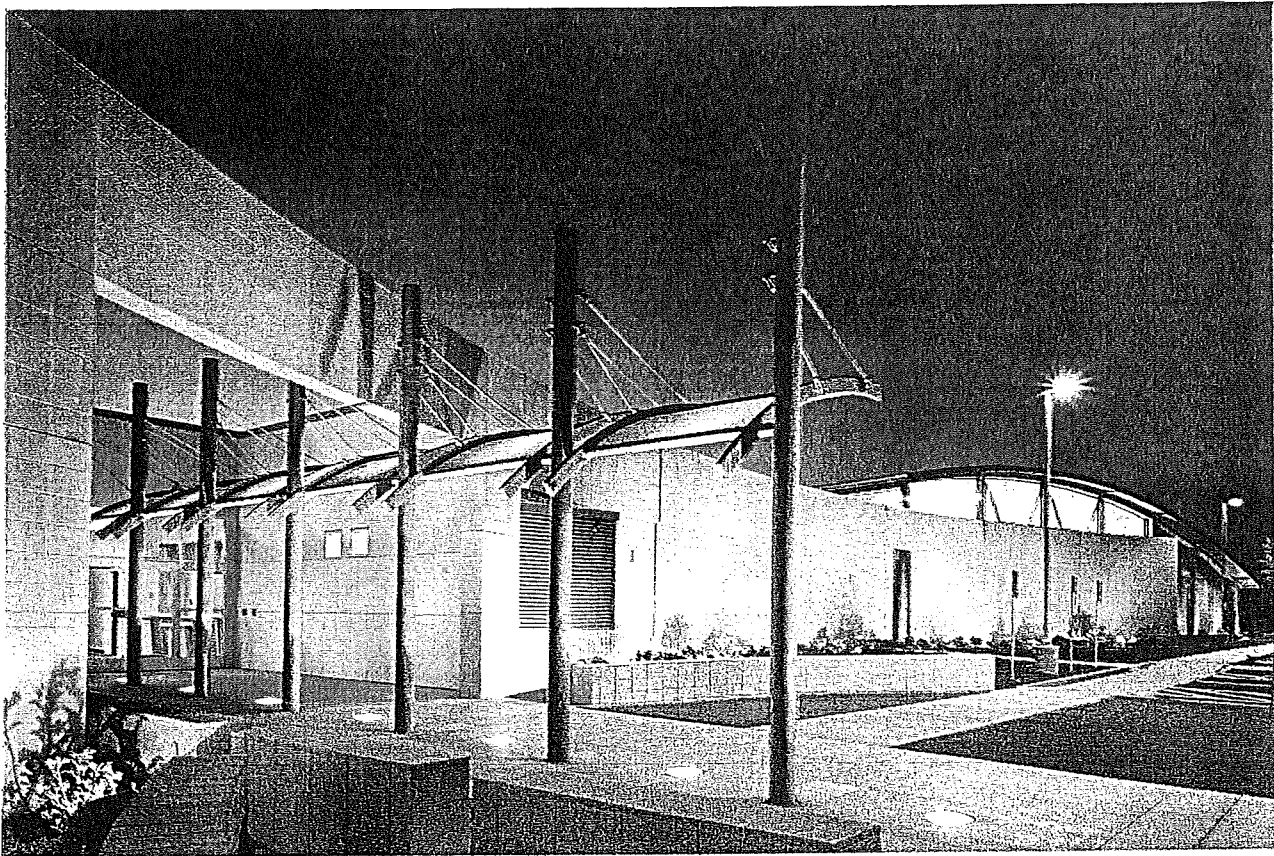
Lionakis is serving as the Associate Architect for the Shasta County Juvenile Rehabilitation Facility. The project is a replacement for the existing Shasta County Juvenile Hall. With the help of Lionakis, this is one of the first two California correctional facilities to be undergoing the SB 81 funding process.

This 44,627 square foot facility will provide 90 new beds in three housing units. Each housing unit will include screening, program and classroom space. In addition, the facility will include intake/release, central control, contact visiting, multi-purpose, medical services, a full-service kitchen and laundry. Support spaces for staff, including office, locker rooms and break room, are also included. The operational and program requirements established during the pre-design phase emphasizes rehabilitation of the minors in a safer and more normalized and non-threatening setting than the existing Juvenile Hall. Lionakis was the consulting architect that provided correctional programming, planning and design services.

REFERENCE:

Shawn Ankeny, Associate Engineer
1855 Placer Street
Redding, CA 96001-1759
(530) 245-6810
sanken@co.shasta.ca.us

LIONAKIS



WARREN E. THORNTON YOUTH CENTER

CLIENT: Sacramento County

SIZE: 56,700 square feet

LOCATION: Sacramento, CA

SCOPE OF WORK:

Warren E. Thornton Youth Center provides quicker placement of youths into the rehabilitation program. The project added approximately 27,900 square feet, increasing the resident population from 50 beds to 110 beds. The facility, which is one of only two such centers in the county, includes housing units, school space, healthcare clinic, mental health offices, administration office, staff facilities, new kitchen, dining, visiting, laundry, gymnasium and a renovation of existing housing and classrooms. The operational and program requirements established during the pre-design phase emphasize staff efficiency, a more normalized and non-threatening setting, minimizing ward movement, durability and support services. Lionakis was the Architect of Record that provided full-service, from programming through construction.

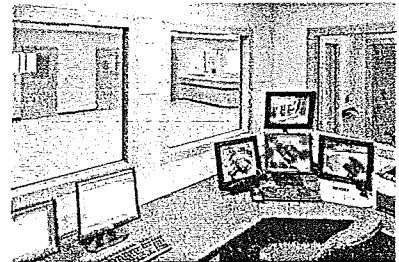
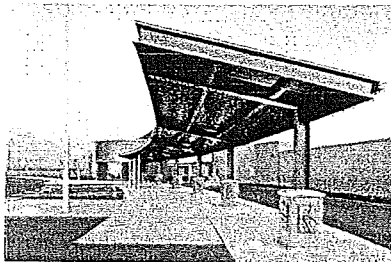
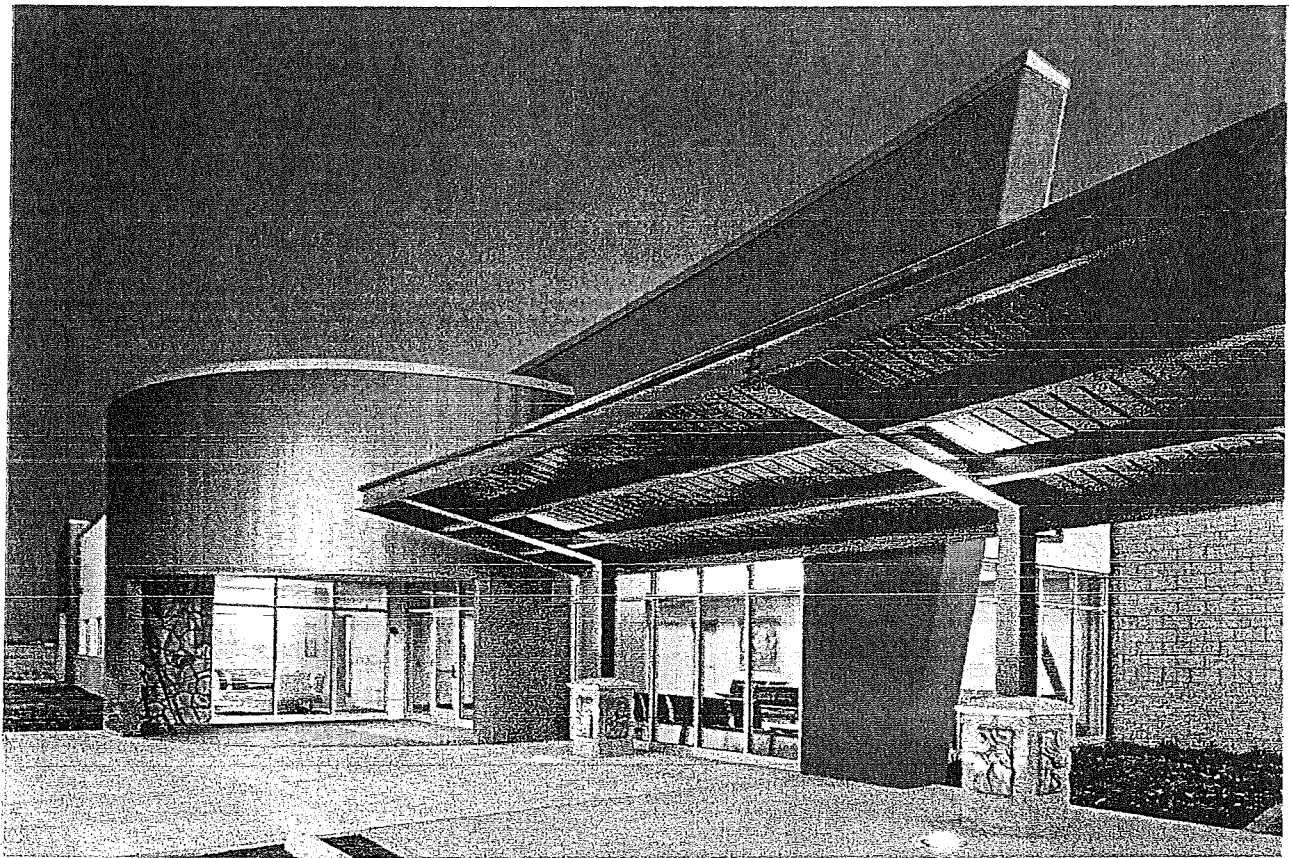
REFERENCE:

Chris Bryson, Project Manager
700 H Street
Sacramento, CA 95814
(916) 876-6304
brysonc@SacCounty.net

AWARDS

2004 Excellence in Structural Engineering -
Best Use of Conventional Technologies in New
Construction, Structural Engineers Association
of Central California (SEAOPC)

2006 A.A. Committee on Architecture for
Justice Award



YOLO COUNTY JUVENILE DETENTION FACILITY

CLIENT: Yolo County

SIZE: 38,900 square feet

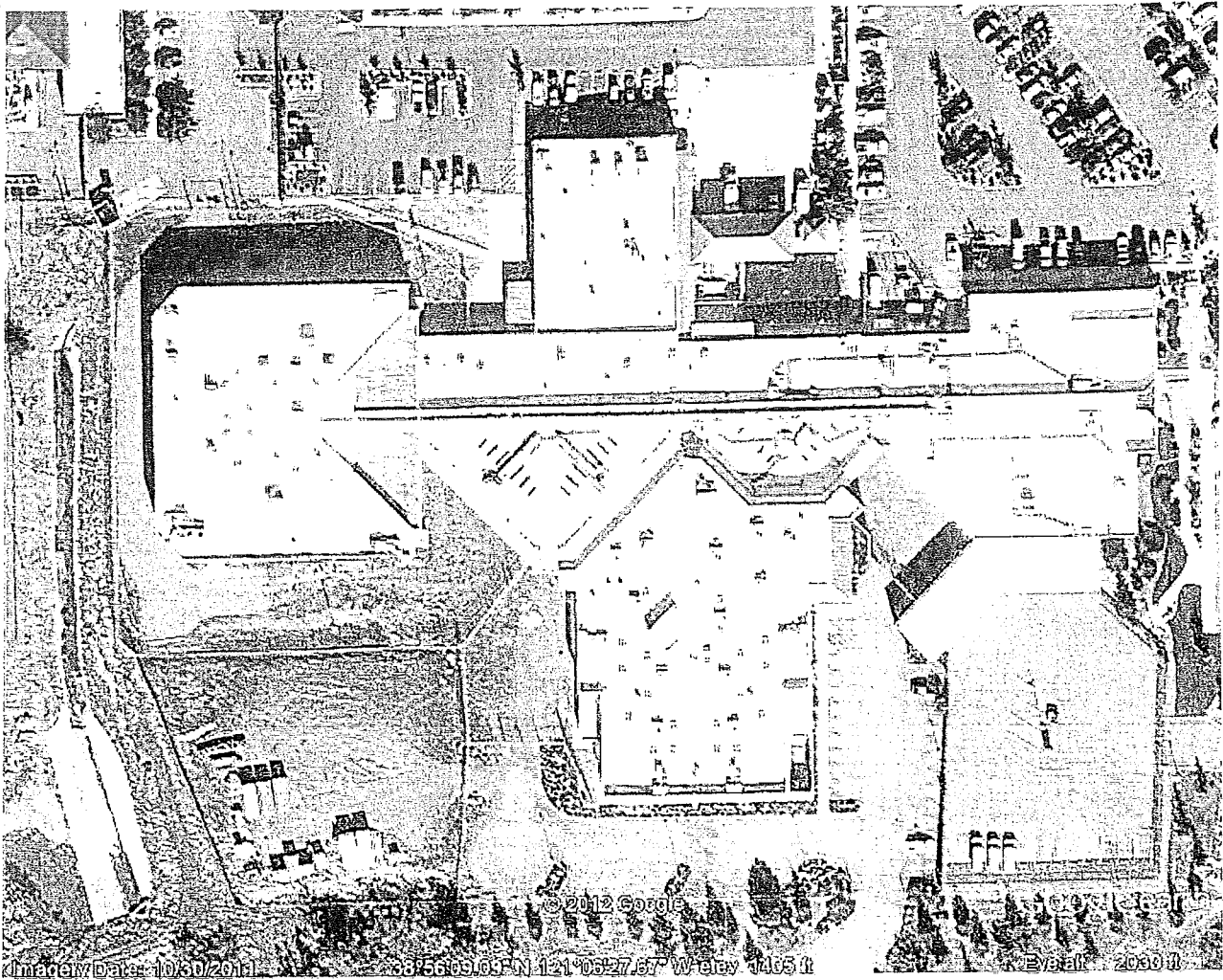
LOCATION: Woodland, CA

SCOPE OF WORK:

The Yolo County Juvenile Detention Facility provides essential juvenile detention services to the growing population of Yolo County. The structure primarily consists of two components—a 90 bed detention area and an administration area. The project provides much needed support and rehabilitative programs that serves the wards and community in a safe, secure and non-threatening environment.

REFERENCE:

Terry Vernon, Deputy Director
625 Court Street, Room 203
Woodland, CA 95695
(530) 406-4870
terry.vernon@yolocounty.org



PLACER COUNTY JAIL

CLIENT: Placer County

SIZE: 31,00 square feet

LOCATION: Auburn, CA

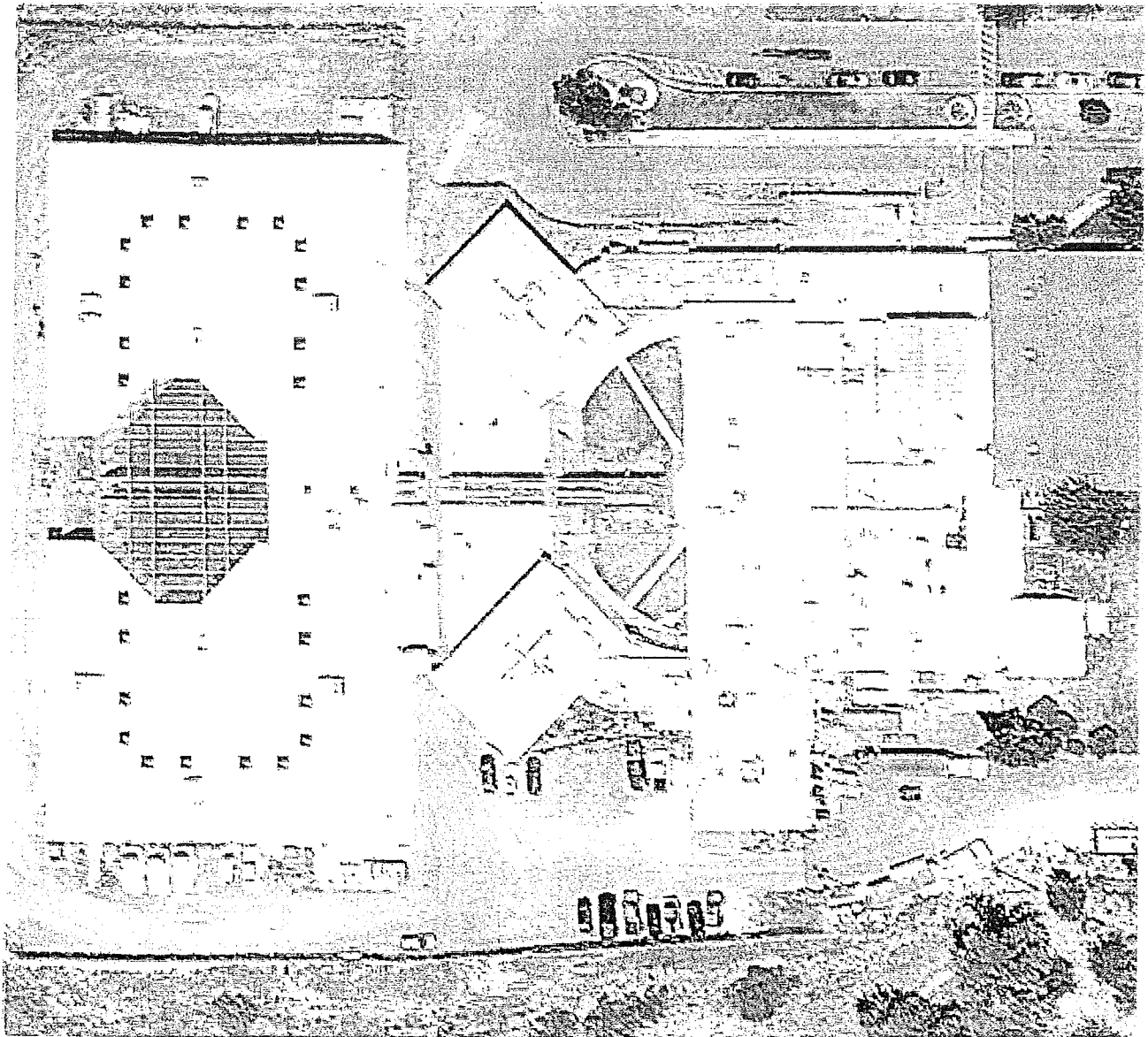
SCOPE OF WORK:

This project utilized the design-build process and included a 260-bed housing addition with single control center. Facility operation remained uninterrupted during construction. A subsequent central kitchen project was completed to service the justice facilities needs, as well as all county facilities requiring food service.

The cook-chill kitchen serves 19,000 meals per week with expansion capabilities of 38,000 meals a week. The kitchen design accommodates the cook-chill method of food service preparation. This method was chosen to facilitate the ease of food service to remote sites and to minimize staffing.

REFERENCE:

Rob Unholz, Facility Services
175 Fulweiler Avenue
Auburn, CA 95603
(530) 886-4946
runholz@placer.ca.gov



BUTTE COUNTY JAIL

CLIENT: Butte County

START/END DATE: 1996-1998

LOCATION: Oroville, CA

SCOPE OF WORK:

Lionakis was instrumental in assisting Butte County in a major expansion, several subsequent renovation projects and a short range Master Plan for the County's Jail system. In an effort to relieve chronic overcrowding, the County was successful in obtaining State Grant funding to expand its antiquated facility which was built in 1965. Their first major expansion was a 480 bed housing component with a mix of maximum, medium and minimum security beds, medical, visitation and security control areas. With the expansion of beds, several of the facility's support services were in need of expansion and renovation. Lionakis designed a new central kitchen, an expanded laundry facility, staff dining and break areas. Additionally, during a separate renovation phase, we provided a renovated Intake and Release, Medical Clinic and Infirmary and new facility Central Control.

REFERENCE:

Larry Vance, Superintendent
25 Country Center Drive
Oroville, CA 95965
(530) 538-7407
lvance@buttecountynet

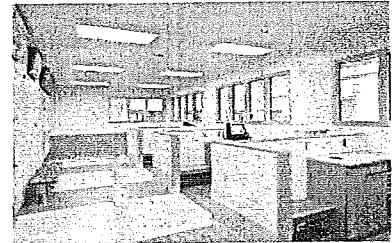
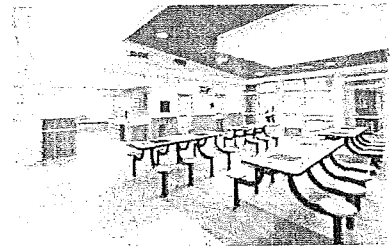
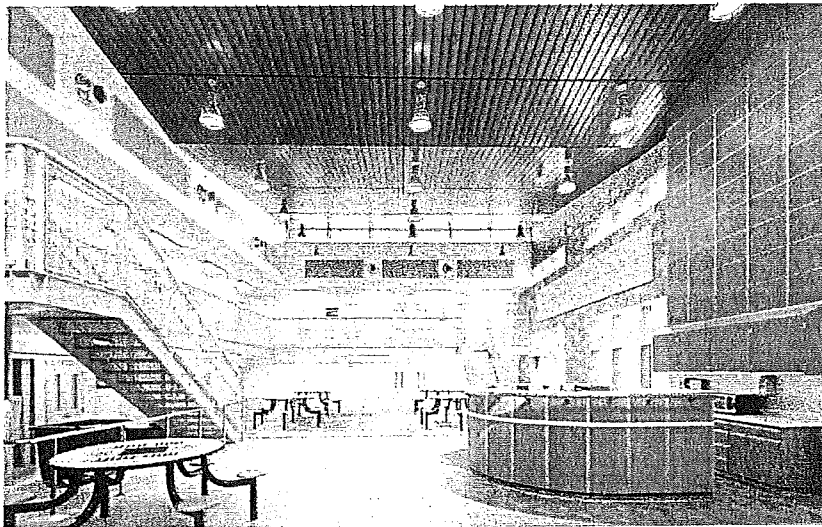


TABLE 1: NEED TO FILL PROGRAM

	PHASE DESIGN	SB 81 - AB900	GRANT FUNDED	SUPPORT /PROGRAM SPACES	ADDITION OR EXPANSION	VARIOUS HOUSING UNITS TYPES	MEDICAL & MENTAL HEALTH
San Joaquin County Jail Expansion	X	X		X			X
Monroe Jail Expansion	X	X		X	X	X	X
Placer County Jail	X		X	X	X	X	
Wayne Brown Correctional Facility	X		X	X		X	X
Butte County Jail	X		X		X		
Sacramento County Youth Detention Facility	X		X	X	X	X	X
Shasta County Juvenile Rehabilitation Facility	X	X		X		X	X
Stanislaus County Juvenile Commitment Facility		X		X			X
Warren E. Thornton Youth Center			X	X	X	X	X
Yolo County Juvenile Detention Facility	X		X	X		X	

County Experience: Provide a list of past experience/projects working for the County of Monterey and the role assigned with each project. If your firm has not worked for the County of Monterey previously, state as such.

LOCAL CONSULTING TEAM

Although Lionakis does not have direct experience working with Monterey County, we have teamed with consultants who not only have experience working with Monterey County but also experience working on your correctional projects. Their experience includes:

COUNTY OF MONTEREY PROJECT EXPERIENCE

Axiom Engineers Inc.

- Sheriff's Public Safety Building | Designed Building HVAC | Role: Plumbing and Fire Protection Systems for New Facility | Salinas, CA
- Sheriff's Coroners Facility | Designed HVAC | Role: Plumbing and Exhaust System for Morgue, Autopsy and Offices | Salinas, CA
- Adult Rehab Facility | Designed Replacement Rooftop Heating and Ventilating Units | Salinas, CA
- Adult Rehab Facility | Designed Replacement of Domestic Hot Water Boilers, Flues and Storage Tanks | Salinas, California
- Adult Rehab Facility | Designed Replacement of Water and Waste Piping for Men's and Women's Showers | Salinas, California
- Jail Boiler Replacement | Designed Replacement of Heating Water Boilers, Flues, Pumps and Controls | Salinas, CA
- Main Jail | Examined as-built Drawings and Installed Piping to Determine Cause of Recurring Heating Piping Failure at the Dining Facility | Salinas, CA
- Jail Control Room #1 | Designed new Air Conditioning System to Separate Control Room from Main Jail Air Stream | Salinas, CA
- Main Jail Shower Remodel | Designed New Plumbing System for Shower Facilities in the Men's and Women's Pods to Improve Access and Repair Leaks | Salinas, CA
- Main Jail Sewer System | Designed Grinder Pump System for Main Sewer Line Existing the Jail to Eliminate Downstream Clogging of at City Lift Station | Salinas, CA
- Juvenile Hall | Designed HVAC, Plumbing, and Fire Protection for New Addition and Renovation | Salinas, CA
- Heath Department | Designed HVAC, Plumbing and Fire Protection for New Facility, Including Specialized Negative Pressure Labs, High Purity Water Systems, Lift Stations and Building Management System | Salinas, CA
- Information Systems Building | Designed HVAC, Plumbing and Fire Protection System for New Facility Including Domestic Water Booster Pump System, Specialized Air Conditioning for 911 Call Center, Emergency Operations Center and Server Room | Salinas, CA

RBF

- County of Monterey | East Garrison Development Engineering Plan Review | Role: Civil Engineer | Fort Ord, CA
- Salinas Valley Healthcare System | Salinas Valley Memorial Hospital Replacement and Expansion | Role: Civil Engineer/Traffic Engineer | Salinas, CA
- City of Salinas | On Call Municipal Stormwater Technical Assistance | Role: Civil Engineer | Salinas, CA
- City of Salinas | On Call Traffic Engineering Services | Role: Traffic Engineer | Salinas, CA
- City of Salinas | East Bernal Drive Improvements | Role: Traffic Engineer | Salinas, CA
- City of Salinas | Rogge Road Off-Site Improvements | Role: Traffic Engineer | Salinas, CA
- Cooley Development Partners | City of Salinas Police Department Preliminary Design | Salinas, CA
- Shea Properties | City of Marina The Dunes on Monterey Bay Mixed-Use Development | Role: Civil Engineer/Surveyor | Marina, CA
- City of Monterey | On-Call Engineering | Role: Civil Engineer | Monterey, CA
- City of Marina | Imjin Road / 2nd Avenue Improvements | Role: Civil Engineer | Marina, CA
- Marina Coast Water District | Water System Planning and Storage Tank Design | Role: Civil Engineer | Marina, CA

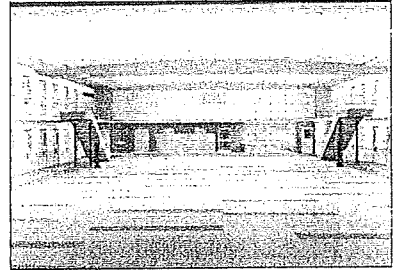
References: Provide a minimum of 3 references on past projects within the last five years. Include contact name, title and current phone number.

PROVEN TRACK RECORD

Lionakis values the long-term relationships we have developed with our clients and we encourage you to call our references, as they represent the truest assessment of our work.

San Joaquin County Jail Expansion

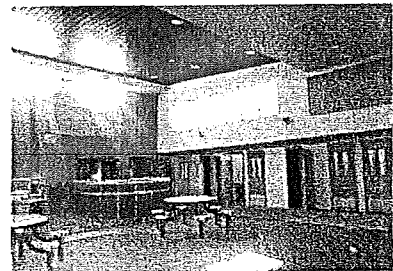
County of San Joaquin
Gabe Karam, Director of Facilities
44 N. San Joaquin Street
Stockton, CA 95202
(209) 468-2181



Stanislaus County Juvenile Commitment Facility

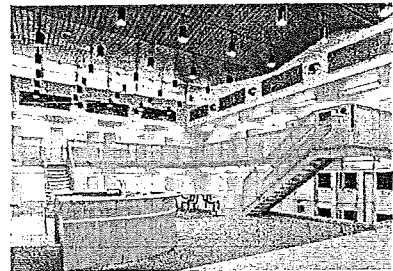
Patty Hill-Thomas, Assistant Chief
Executive Officer
1010 Tenth Street, Suite 6800
Modesto, CA 95354
(209) 609-4334

Jill Silva, Chief Probation Officer
1010 Tenth Street
Modesto, CA 95354
(209) 525-4503



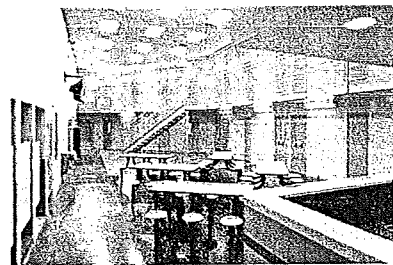
Sacramento County Youth Detention Facility

Chris Bryson, Project Manager
700 H Street
Sacramento, CA 95814
(916) 876-6304



Yolo County Juvenile Detention Facility and Monroe Jail

Terry Vernon, Deputy Director
625 Court Street, Room 203
Woodland, CA 95695
(530) 406-4870



Please refer to the project sheet pages for additional references.

Violations: Contractor shall disclose any and all past and present law suits resulting from its errors and omission. The outcome should be included.

TRUSTED TEAM

It is the prime goal of each of our team members to provide a high level of client service. Our policy of avoiding and resolving construction disputes is consistent with that goal. We address disputes immediately and resolve conflicts as early as possible. Moreover, regardless of the phase of work, we have an active commitment to working in a cooperative manner and resolving issues before they become disputes.

Following is a listing of our past and present lawsuits, as requested:

December 2010:

Parking Lot, Academy of Arts & Sciences, Sacramento

Lionakis, as the Architect of Record, has been named, along with a number of other defendants, in a claim stemming from an accident at Smythe Academy of Arts and Sciences in Sacramento, California, in which an unidentified hit and run driver exiting the premises parking lot struck and killed a pedestrian as the pedestrian crossed the driveway. The police determined the driver was at fault. The claim applicable to the Architect of Record includes general negligence and wrongful death. Although the suit is still in the discovery stage, a recent Grand Jury investigation into the school district's administration determined that unauthorized changes to the parking lot were made prior to the accident, but after the work of Lionakis. The driveway existed in this location in a virtually identical configuration before the work of Lionakis for at least 12 and likely 25 or more years without any problems

SECTION FOUR

PROJECT SPECIFIC COMPONENTS

PROJECT SPECIFIC COMPONENTS

Project Management Plan: Provide a Project Management Plan describing approach and the steps and methods used to manage the project from schematic design through construction including submittals and meeting with BSCC, CDCR and CSFM, staff roles and responsibilities for each step in the work process.

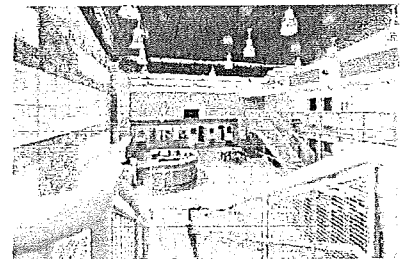
PROJECT MANAGEMENT PLAN

The design and construction of adult detention facilities requires a unique need for balance. There is the obvious necessity to create a safe and secure facility for both inmates and staff. However, this must be balanced with the importance of providing environments that promote rehabilitation where inmates can socialize, learn, implement specific programs and be productive. In addition the facility must support the operational program and philosophy of Monterey County. Lionakis understands this balance and has the correctional experience to accomplish the objectives set forth by the County.

To be successful, the project must have a comprehensive management plan that addresses the current and future needs of the facility. Lionakis has assisted other counties in their AB 900 and SB 81 funding applications and successfully managed the State process through construction. Monterey County has the opportunity to obtain additional AB 900 funding during the design process and requires a firm that can guide them through the process and be flexible to accommodate potential increase in scope should the County be successful in obtaining additional funds.

The overall focus of our efforts supporting your project is to add inherent value, as defined by you, to the project. To do this we combine our experience in correctional facilities with the lean project delivery approach we have been refining over the last four years at Lionakis. Some of the lean project delivery tools that we will utilize are discussed in this description of our Management Plan.

Given the scope, schedule, budget and nature of your project, collaboration is a key ingredient for success. Our team has been assembled not only for its collective expertise, but also for each team member's firm culture—a shared culture of collaboration and relationships. We recognize that reliance on each team member's expertise is essential and teamwork founded on relationships is the key to realizing success.



EXCEEDED EXPECTATIONS

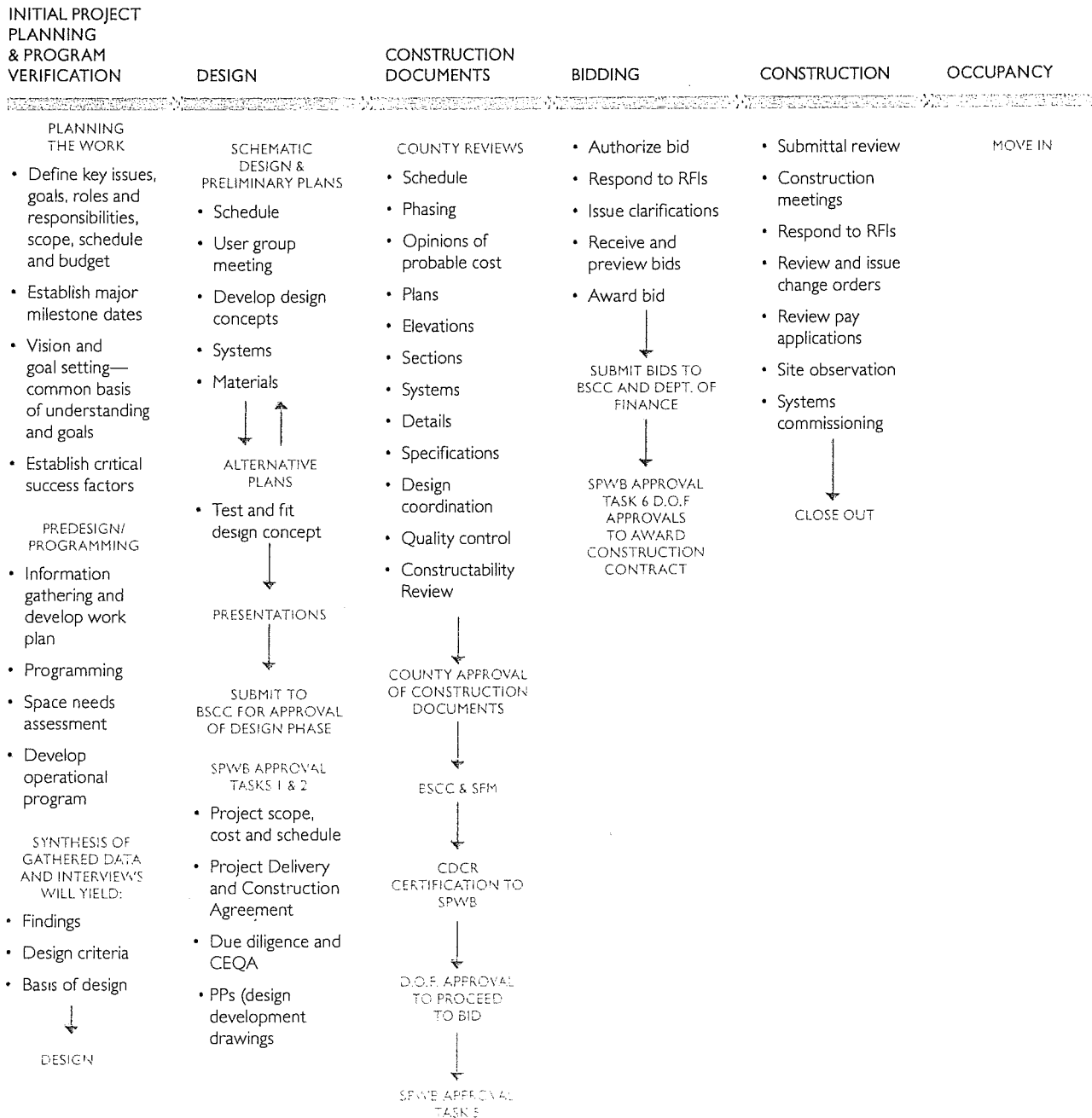
"Under the direction of Lionakis, our current Juvenile Hall 90-bed addition construction project is on schedule and under budget. The project emphasises natural light, landscape colors and direct line of supervision. These three design elements, introduced by Maynard, will greatly enhance staff's ability to safely and securely control the wards under their care and custody. With Maynard's expertise Lionakis has exceeded our expectations."

Gary Steele
Chief Deputy Probation Officer
County of Sacramento Probation
Department

WORK PLAN

Our Criminal Justice Team follows a detailed technical approach to providing services to the County. This design approach starts with a Work Plan. This Work Plan outlines the key phases of the project, from initial planning through the completion of construction documents and the construction of the project. The development of the work plan is done collaboratively, working with the County's team and the full A/E Team. During this step of the design process, key issues, goals, objectives and critical success factors are identified for the project as a whole, as well as for each phase of the project delivery process.

Our comprehensive Work Plan covers the following key phases:



INITIAL PROJECT PLANNING & PROGRAM VERIFICATION

During this phase, our focus is to identify the major tasks that are necessary to fully define, describe and budget the project. We will refine and further develop the space requirements and validate the project's program. We understand that a great deal of effort has already been expended to date with the current development with HMC-Beverly Prior. We've reviewed the available documentation and believe we can leverage and enhance the previous planning. There is a mutual respect between our two firms and we have provided successful peer review to other facilities of theirs. By applying our experience from preparing space requirements and programs for similar correctional facilities, we can set up the basis for the development of conceptual layouts for the project. The responsiveness and suitability of these conceptual designs will be assessed using programming criteria as well as site conditions and constraints.

Values Matrix

Before beginning any design work, Lionakis will ask every Monterey County stakeholder to answer this question; "What do I consider to be of value to me on the Jail Housing Project that will help make this project become successful?" We put all of the answers up on a board and as a group organize these values into categories that become the critical success factors for your project. It is by incorporating these values into the project during the design process that adds value, as defined by you, to your project.

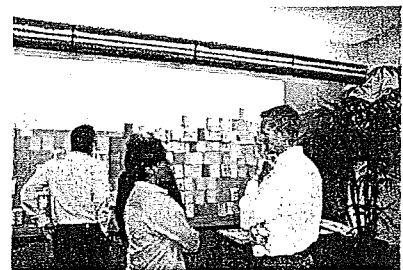
Pull Scheduling

Pull scheduling is done collaboratively between the design team and all of the Monterey County major stakeholders including Contracts/Purchasing Division, the Sheriff's Department, Construction Manager and Probation (if desired) to facilitate a deep understanding of the schedule requirements (what, to whom and when) as a team. The starting point for this process is the County's Milestone Schedule. In a collaborative meeting, each team member documents their discipline's deliverables and deadlines on the board so that everyone has a clear understanding of how these deliverables relate to the other team members. For example, at the SPWB Task 2 milestone, the County will be required to submit updated project schedules and cost summary. Working back from the date of the SPWB meeting, our pull schedule would identify which documents are needed, when the documents would be needed, who is responsible for those documents and how long it will take to prepare them. This assures that everyone has a clear understanding of the schedule, their individual scopes of work and their impact on the other team members. This process allows the team to coordinate each deliverable before the schedule is developed to efficiently determine coordination needs.

UNSURPASSED PERFORMANCE

"Lionakis' performance on our new County Jail project was excellent! The work coordination and documentation was unsurpassed from any project undertaking we've previously experienced. Their ideas and input were invaluable in making our jail a better building. They developed close working relationships with County staff, our consultants and the construction contractor representatives."

Mike Pyeatt
General Services Director
Chief Administrative Office County of
Butte



PULL SCHEDULING

Lionakis has found great success saving clients time and money by requiring direct coordination between the design team, subcontractors, owner and facilities directors—the project team—facilitating a deep understanding of schedule coordination between all members.

Pull Scheduling Continued

For your project, this pull schedule will include the following key tasks:

- Initial Project Planning and Program Confirmation
- Schematic Design
- Design Development
- Construction Documents
- Construction Bids
- Construction Administration Phase

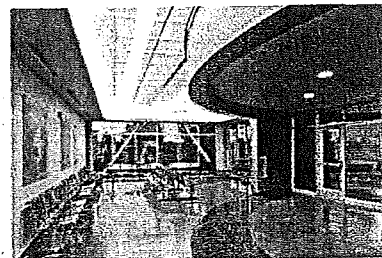
This pull schedule is then documented with Microsoft Project 2010 to produce the Master Project Schedule, which will be discussed in more detail later in this proposal.

Reviewing & Validating

The County's design criteria and guidelines, as well as applicable codes and regulations, will be reviewed and validated to establish a thorough understanding of these factors and how they will influence the design and development of the project. Based on the information established as part of this process, preliminary space lists and operational requirements will be developed. We fully understand what makes each of these facilities unique; it's the particular operational requirements and the staffing. Lionakis has successfully designed numerous correctional facilities for various California counties with long term development in mind. They need to be flexible and allow expansion in the future. Our team develops specific design criteria for each programmed space, produce adjacency diagrams and develop site plan options and circulation diagrams. This process will involve County staff to collaboratively establish a comprehensive basis of design. Also, concurrent with this phase of the work, geotechnical and topographical surveys of the project site will be reviewed and assessed.

Managing the Budget—At the heart of our design process is a collaborative and open dialogue between all parties who are vital to the success of the project. This collaboration forms the basis for the development of a project budget based on the program and site needs. The project budget establishes the basis of design for all project components. In our experience, the challenge will be to manage the budget to the program. To check the work as it proceeds, Lionakis will conduct a survey of contractors and material suppliers in the project's vicinity to validate findings and recommendations. The cost model is utilized by the full Project Team as the basis for making decisions throughout the design phase.

Sustainable Design Principles—A major part of the planning and programming process includes the identification of sustainable design principles that support each project's goals and objectives. In this respect, the full expertise of Lionakis' 80+ LEED Accredited Professionals will be utilized on your project. Our firm is a recognized leader in sustainability and green design in California. With nearly four million square feet of LEED Certified and Registered projects, we have a comprehensive understanding of how the LEED rating system will be applied to your projects.



OPEN, HONEST AND CANDID

"Each and every discussion with Lionakis staff was open, honest, and candid. I appreciated their ability to see the big picture and work with us. They definitely had their perspective on issues, but they were always willing to listen, willing to work to improve anything that needed it, and perhaps most of all, willing to explain things, issues, and questions as they came up."

Dwight Washbaugh
Sacramento Local Conservation Corps

SCHEMATIC DESIGN

The Design Phase consists of three phases, each corresponding to a submittal to BSCC and the SFM. The objective of the Schematic Design Phase (30% Submittal) is the translation of the program and site development plan into a building design, as well as meeting the goals, operational objectives and budget requirements established by the County.

A meeting is held with the BSCC Field Representative and Compliance Reviewer (Michael Bush) to confirm that the project documents prepared as part of the Planning and Program Verification phase are on track for the project to comply with Minimum Standards for Adult Detention Facilities as outlined in Title 24 of the California Code of Regulations (CCR).

Set Design

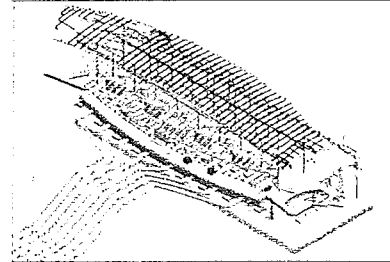
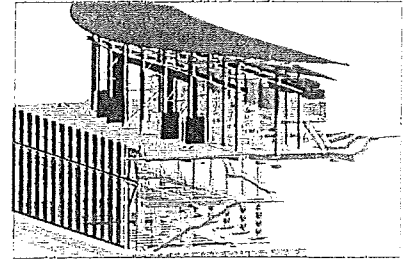
At the early stages of the design process, there are often multiple approaches (or "sets") that are developed that the team wants to study further to determine which will bring the most value to the County. These different sets are studied equally until reaching decision points that were identified during the pull scheduling effort. At these decision points, the critical success factors identified in the values matrix are applied to each set and those that are not meeting these criteria are dropped until there is consensus on one design approach.

Our team then prepares all necessary Schematic Design Documents including, but not limited to:

- Site Plan based on information from the County, indicating the proposed location of the buildings, major improvements such as proposed parking areas and location of exterior utilities and services lines.
- Floor Plans showing all rooms and areas, entrances, exits, circulation corridors, toilet rooms and major mechanical and electrical areas.
- Building Elevations showing the various building masses and how they coincide with the floor plans, including proposed materials and typical fenestration pattern.
- Building Sections showing floor-to-deck dimensions sufficient to indicate interface with structures.
- Preliminary general descriptions of systems such as paging, intercom, building security, lighting, telephone, cable TV, closed-circuit TV, computer cabling, HVAC, fire protection, plumbing, special systems, gas and the general type and scope of construction and the equipment required therein.

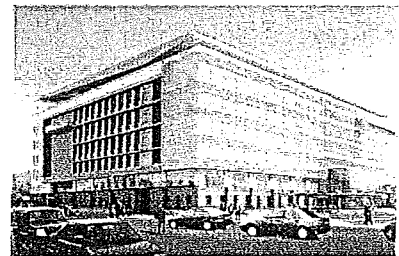
Value Engineering

Lionakis fully understands Monterey County's commitment to value engineering on every project. Using the set design process, cost is a critical success factor for determining whether a design moves forward. This assures that the County's budget is validated at each milestone. This process will be discussed in more detail in this proposal.



SCHEMATIC DESIGN AND BIM

Lionakis utilizes BIM as a 3D visualization tool to engage our clients in the design process offering you a greater level of understanding and ownership of the design.



QUALITY DESIGN

"As the project has evolved through the multiple years, Lionakis has provided a steady input of quality design and construction support for the scope and magnitude of the project."

Michael Haviland
Administrative Services Division,
Facilities Operations Branch

Lean QA/QC

At the appropriate milestones, we implement a collaborative interdisciplinary approach to QA/QC that includes all major consultants, representatives of the user groups and any other stakeholders the County identifies. All key team members meet collectively for a "Big Room" meeting to review the design documents for the project. This process allows multiple disciplines to review and share different perspectives for each discipline's design. The Stanislaus County Juvenile Commitment Center, now under construction, was among the first Lionakis projects to utilize this process. This important process has uncovered important issues that may not be apparent initially. By uncovering key issues early, Lionakis can build this knowledge into the project documents during the following phases.

DESIGN DEVELOPMENT

A well-developed schematic design that has the full support of all major stakeholders is the basis for the work in the Design Development phase of the project. Design Development of the County's approved schematic phase documents will include identification, selection and sizing of all major building systems and components. Once again our process is based on a collaborative process that actively solicits input from all members of the project team. As design criteria, codes and standards are applied to these systems and components, annual operating and life-cycle costs are evaluated. The cost model is updated and, if required, cost control recommendations are employed to maintain budget/scope alignment.

Design Development documents are reviewed by the same Lean QA/QC process described above to assure compliance with the County's scope of work and design criteria. Once this package is complete, it is submitted to your County for review and to BSCC/SFM. After approval from BSCC and the SFM, BSCC submits this package to the State Public Works Board (SPWB) for approval.

CONSTRUCTION DOCUMENTS

The Construction Documents (CD) phase of the project builds on the decisions made during the design development phase of the project and culminates in the preparation of a coordinated set of drawings and specifications that are submitted to all agencies having jurisdiction for review and approval of the work. The CD set will be fully coordinated across all design and engineering disciplines and will include any necessary applications, plans and/or reports for such issues as storm water pollution prevention plans and air quality management.

During the preparation of the CD's for the project, Lionakis will coordinate and integrate any/all of Monterey County's requested changes, including the specification of owner supplied General Conditions, equipment, furnishings and pre-purchased fixtures. Additionally, the cost model will be updated at scheduled milestones to ensure that the scope of the work is in alignment with the project budget. In addition, the Lean QA/QC process will be utilized at approximately 95% completion so that any revisions or corrections can be incorporated into the documents prior to submittal to BSCC and SFM. After approval from BSCC and the SFM, BSCC submits this package to CDCR Department of Finance in order to receive the approval to proceed to Bid.



QC PROCESS IN ACTION

Our QC process provides an interdisciplinary approach that ensures you have the broadest, most in-depth, timely range of input, and expertise reviewing your project. All disciplines take ownership of work on issues together.



CONFIDENCE IN LIONAKIS

"I enjoy our relationship with the Lionakis team. They use nice products but mostly we have tremendous confidence in them."

Donna Durham
Architect and Project Director II
Department of General Services

CONSTRUCTION SUPPORT SERVICES

The A/E team will assist and support the County in the bidding of the project, including attending pre-bid conferences and answering all bidder questions. We employ a rigorous and formalized process that ensures accountability during this critical part of the project. Lionakis' philosophy and practice of keeping project leadership and support team "on the job" from start to finish is vital and will be evident during the bidding and construction of the facility.

Our experience has proven that having key project personnel who were involved during the design and documentation phases of the project provide construction support services ensures continuity and the application of key design criteria as the project is built. Such perspective is especially important when contractors request substitutions. This continuity ensures that design and performance goals are achieved. This perspective is also invaluable for teaming and partnering. During construction, the A/E team will assist and support Monterey County as follows:

- Respond to all RFI's, memorandums of concern and other inquiries from the field
- Prepare design bulletins for changes to the work initiated by the County
- Review and approve submittals, shop drawings and substitution requests
- Attend on-site construction and team meetings
- Make site visits as requested by the County
- Prepare testing and inspection programs for structural systems and corrosively
- Review and comment on all requests for changes to the work, regardless of origin
- Provide final closeout services including punch list and coordination of O&M manuals

Our ability to track RFI's, submittals and shop drawings on in-house electronic logs and ensure that these submittals are answered in a timely fashion is a record of which we are proud. Our policy is to respond to construction situations as they arise. This is accomplished by building a rapport with the contractor, enabling problems to be cooperatively solved in an efficient and timely manner. Our goal is to maintain the same project management diligence and attention to detail present during the design and production phases of the project through the construction administration phase. It is during the construction phase that design efforts are realized and your vision becomes a reality.



EXCEEDING EXPECTATIONS

"Lionakis totally exceeded our expectations. They were exceptional in responding to RFI's and Submittals, which made this first truck job a success. I consider Lionakis as one of the best design teams I've ever worked with."

Jai Thangaraj
DPR Construction, Inc.

COLLABORATIVE OWNER'S ADVOCATE

"Lionakis continually balances progressive design practices with fundamental design principals, always acts as the owner's advocate, works collaboratively toward all project goals including budget and schedule, and aggressively pursues issues during construction to keep their projects on track. I highly recommend Lionakis."

Scott Schrieffer
Operations Manager
Buildings Division
Swinerton Builders, Inc.

Include your firm's process for schedule management, scheduling software used, and methods used to recover from a slippage in the scheduled milestones.

SCHEDULE MANAGEMENT

As noted above, after developing the pull schedule in collaboration with the County and all the stakeholders, we will create an electronic Master Project Schedule using Microsoft Project 2010. This schedule will identify all the tasks and milestones by phase.

During the course of the project the Master Project Schedule will be used by all stakeholders to gauge progress and to be aware of upcoming deadlines and milestones. This schedule can be updated as necessary.

Full Wall Schedule

Internally, Lionakis utilizes another lean delivery tool called the "Full Wall Schedule". Full Wall Scheduling utilizes a full wall on which vertical lines are drawn representing one work day or week, depending on the level of detail needed. Horizontal lines are used to separate the key individuals on the project team. To assemble the full wall schedule, the project manager utilizes the Master Project Schedule to identify the tasks, and key milestones.

The project manager then calls a meeting in the room and asks that all persons on the project team be present, including the client, any third-party agency representatives, and, if possible, the contractor. Each task is assigned to a member of the team, the relation to milestones and other tasks is discussed and the task is then placed on the wall where it fits into the schedule. Location on the schedule may be moved as other tasks are assigned and discussed. Additional tasks not anticipated may be added.

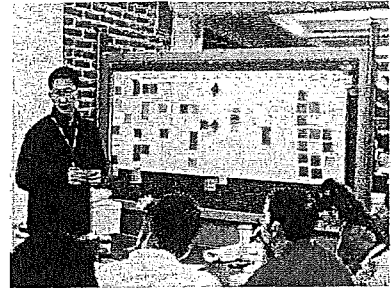
The key feature of the full wall scheduling procedure is the high degree of interaction that takes place during the scheduling meeting. Conflicts are identified early, discussed and resolved. This process enables the key project team members to make firm commitments to the project management as to their assigned activities. Full wall scheduling also allows the design team to quickly identify any slippage in the schedule and to make the adjustments necessary to keep the project on schedule.

Describe your firm's ability to meet the deadlines stated in the project Schedule listed in EXHIBIT I attached hereto.

MEETING YOUR SCHEDULE

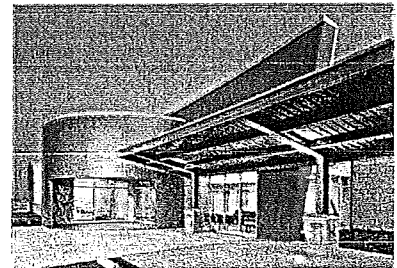
Lionakis has a proven track record of meeting tight deadline for our clients. This is based not only on our commitment to each project, but our integrated approach that encourages accountability from all team members. Based on the dates listed in Exhibit I, we have designed a preliminary schedule that outlines our ability to successfully meet your deadline.

Please refer to the following pages for a Master Project Schedule based on Exhibit I – Jail Housing Addition Project Schedule.



FULL WALL SCHEDULE IN ACTION

Full Wall Scheduling is a lean tool that requires a high degree of interaction that takes place during the team meeting. Conflicts are identified early, discussed, and resolved—ultimately avoiding unexpected delays!



MEETING FAST TRACK SCHEDULES

When Yolo County was threatened with the possibility of losing their grant funding for their new juvenile hall, due to committed completion deadlines. Because of Lionakis' highly organized staffing schedule, we were able to meet this surge workload and expedite the design development and construction documents. Lionakis worked closely with the Board of Corrections to gain approvals at each milestone and to meet this accelerated schedule.

With a bid schedule to start in January 2004, we obtained Board of Corrections approval and State Fire Marshal stamping of documents on December 23, 2003, during the holiday season.

Monterey County Jail Housing Addition Master Project Schedule

ID	Task Name	Duration	Start	Finish	2014	2015	2016	2017	2018	2019
1	PROGRAM VERIFICATION/SCHEMATIC DESIGN PHASE	128 days	Fri 8/8/13	Mon 2/10/14						
2	Notice to Proceed	0 days	Fri 8/8/13	Fri 8/8/13						
3	Project Kick-Off Meeting	1 day	Mon 8/26/13	Mon 8/26/13						
4	Site Investigation	2 days	Tue 8/27/13	Tue 8/27/13						
5	Program Verification	3 wks	Tue 9/17/13	Mon 11/25/13						
6	Schematic Design	45 days	Mon 9/16/13	Mon 11/25/13						
7	Develop Schematic Concepts	4 wks	Mon 9/16/13	Mon 11/25/13						
8	Design/Engineering Analysis	7 days	Thu 10/17/13	Fri 10/25/13						
9	Test & FTS	10 days	Mon 10/28/13	Mon 11/18/13						
10	Consultant Input	1 wk	Tue 11/12/13	Mon 11/18/13						
11	Develop Probable Cost Differential	1 wk	Thu 10/17/13	Mon 11/25/13						
12	Develop Schematic Concept	4 wks	Thu 10/24/13	Mon 11/25/13						
13	QA/QC Review	1 wk	Tue 11/19/13	Wed 11/27/13						
14	Cost Estimate	10 days	Tue 11/26/13	Mon 12/9/13						
15	Preliminary Information Distribution	1 day	Tue 11/26/13	Mon 12/9/13						
16	Cost Estimate Kick-off	1 day	Tue 11/26/13	Mon 12/9/13						
17	Cost Estimate Reconciliation	1 day	Wed 11/27/13	Mon 12/9/13						
18	Team Review of Cost Estimate	1 day	Wed 12/4/13	Mon 12/9/13						
19	Value Engineering	5 days	Wed 11/27/13	Tue 12/3/13						
20	Coordination/Revisions	1 wk	Wed 12/4/13	Tue 12/10/13						
21	Submit Documents for Review	0 days	Tue 12/10/13	Tue 12/10/13						
22	County Review	2 wks	Wed 12/11/13	Tue 12/24/13						
23	CSA/SFM Review	6 wks	Wed 12/11/13	Thu 1/23/14						
24	Incorporate Review Comments	2 wks	Thu 1/24/14	Thu 2/6/14						
25	Submit Final Schematic Design Package	0 days	Thu 2/6/14	Mon 2/10/14						
26	Schematic Design on BOS Agenda	2 days	Mon 2/10/14	Mon 2/10/14						
27	BOS Approval of Schematic Design	0 days	Mon 2/10/14	Mon 2/10/14						
28	Design Development Phase (PRELIMINARY PLANS)	205 days	Mon 2/10/14	Mon 11/24/14						
29	Notice to Proceed	0 days	Mon 2/10/14	Mon 2/10/14						
30	Kick-off Meeting	1 day	Thu 2/13/14	Thu 2/13/14						
31	Design Development Documents	65 days	Fri 2/14/14	Thu 5/15/14						
32	Energy Design Studies/Materials Research	1 wk	Fri 2/14/14	Thu 2/20/14						
33	Annual Operating Cost Estimating	1 wk	Fri 2/27/14	Thu 2/27/14						
34	Coordinate Bid Alternates	1 wk	Fri 2/27/14	Thu 2/27/14						
35	Design Development Documents	12 wks	Fri 2/27/14	Thu 5/15/14						
36	Outline Specification	2 wks	Fri 5/21/14	Thu 5/15/14						
37	QA/QC Review	1 wk	Fri 5/21/14	Thu 5/22/14						
38	Consultant Coordination	1 wk	Fri 5/23/14	Thu 5/29/14						
39	Cost Estimate	2 wks	Fri 5/30/14	Thu 6/12/14						
40	Value Engineering	2 wks	Fri 6/3/14	Thu 6/26/14						
41	Coordination/Revisions	2 wks	Fri 6/27/14	Thu 7/10/14						
42	Preliminary Staffing Plan and Operational Plan Support	2 wks	Fri 7/11/14	Thu 7/24/14						
43	Submit Documents for Review	4 wks	Fri 5/30/14	Thu 6/26/14						
44	County Review	0 days	Thu 7/24/14	Thu 7/24/14						
45	CSA/SFM Review	2 wks	Fri 7/25/14	Thu 8/7/14						
46	Incorporate Review Comments	6 wks	Fri 7/25/14	Thu 9/4/14						
47	Submit Final Design Development Documents	2 wks	Thu 9/4/14	Thu 9/18/14						
48	Project on SPWB Agenda (CSA)	0 days	Thu 9/18/14	Thu 9/18/14						
49	SPWB Meeting: Approval of Preliminary Plans	0 days	Fri 10/10/14	Fri 10/10/14						
50	Design Development on BOS Agenda	0 days	Fri 11/14/14	Mon 11/17/14						
51	BOS Approval of Design Development	0 days	Mon 11/24/14	Mon 11/24/14						
52	CONSTRUCTION DOCUMENTS PHASE	173 days	Wed 11/26/14	Wed 11/25/15						
53	Notice to Proceed	0 days	Wed 11/26/14	Wed 11/26/14						
54	Construction Documents	86 days	Thu 12/4/14	Thu 4/23/15						
55	Kick-off Meeting	1 day	Thu 12/4/14	Thu 12/4/14						
56	Validate and Coordinate Bid Alternates	1 day	Fri 12/5/14	Fri 12/5/14						
57	Construction Documents to 50%	8 wks	Fri 12/5/14	Thu 1/29/15						
58	Coordination/Review	1 wk	Fri 12/5/14	Thu 12/5/14						
59	County Review	10 days	Fri 12/5/14	Thu 12/5/14						
60	Task	Summary								
61	Split	Project Summary								
62	Milestone	External Tasks								
63	Task	Summary								
64	Split	Project Summary								
65	Milestone	External Tasks								

Monterey County Jail Housing Addition Master Project Schedule

ID	Task Name	Duration	Start	Finish	2014	2015	2016	2017
64	Construction Documents to 95% Specifications	8 wks	Fri 2/6/15	Thu 4/2/15				
65	QA/QC Review	10 days	Fri 3/20/15	Thu 4/2/15				
66	Consultant Coordination	5 days	Fri 4/3/15	Thu 4/9/15				
67	Coordination/Revisions	10 days	Fri 4/10/15	Thu 4/16/15				
68	100% Cost Estimate	5 days	Fri 4/17/15	Thu 4/30/15				
69	Architect Peer Review	10 days	Fri 5/1/15	Thu 5/7/15				
70	Staffing Plan/Operational and Staff Cost Estimate Support	4 wks	Fri 4/24/15	Thu 4/16/15				
71	Submit Construction Documents for Review	0 days	Fri 4/24/15	Thu 4/24/15				
72	County Code Review	10 days	Fri 4/24/15	Thu 4/30/15				
73	CSA/FSM and Local Building Jurisdiction Review	6 wks	Fri 4/24/15	Thu 5/14/15				
74	Secure Regulatory Approvals	0 days	Fri 5/15/15	Thu 5/21/15				
75	CDR/CSA Certification of Project	0 wks	Fri 5/22/15	Fri 5/22/15				
76	PMIB Approval	0 days	Tue 7/14/15	Tue 7/14/15				
77	CDR/CSA Certification to DOF	0 wks	Fri 6/12/15	Fri 6/12/15				
78	DOF Issues approval to proceed to Bid	0 days	Wed 7/15/15	Wed 7/15/15				
79	Construction Documents on BOS Agenda	0 days	Fri 7/17/15	Fri 7/17/15				
80	BOS Approval of Construction Documents	0 days	Mon 7/27/15	Mon 7/27/15				
81	CONSTRUCTION BIDS	62 days	Tue 7/28/15	Thu 10/22/15				
82	Notice to Proceed	1 day	Tue 7/28/15	Tue 7/28/15				
83	Prepare Bid Packages	0 days	Tue 7/28/15	Tue 7/28/15				
84	Bidding	1 wk	Tue 8/4/15	Tue 8/4/15				
85	Issue for Bidding	31 days	Tue 8/4/15	Wed 9/16/15				
86	Pre-Bid Conference	0 days	Wed 8/12/15	Tue 8/4/15				
87	Clarifications and Addenda	1 day	Wed 8/12/15	Wed 8/12/15				
88	Bids	25 days	Thu 8/13/15	Wed 9/16/15				
89	Evaluation of Bids/Issue Intent to Award	1 day	Wed 9/16/15	Wed 9/16/15				
90	Deadline for Bid Protest	5 days	Thu 9/17/15	Wed 9/23/15				
91	Prepare Contract and Board Agenda Item	10 days	Thu 9/24/15	Wed 10/14/15				
92	BOS Conditional Approval of Construction Contract	1 day	Thu 10/15/15	Mon 10/19/15				
93	Issue Cost Summary, Bid Tabulation, Schedule and BOS approval to CDC	0 days	Mon 10/19/15	Mon 10/19/15				
94	CDOR Approves Award of Construction Contract	5 days	Tue 10/20/15	Tue 10/20/15				
95	Approval of GC's Insurance and Bonds	0 days	Fri 10/16/15	Thu 10/22/15				
96	CONSTRUCTION ADMINISTRATION PHASE	525 days	Thu 10/22/15	Thu 10/22/17				
97	Sign Contract/Notice to Proceed with Planning	0 days	Thu 10/22/15	Thu 10/22/15				
98	Pre-Construction Meeting	1 day	Fri 10/30/15	Fri 10/30/15				
99	Construction Contract Administration	28 mons	Fri 10/30/15	Thu 10/19/17				
100	Construction Activities	22 mons	Fri 11/27/15	Thu 8/31/17				
101	Project Closeout	3 mons	Fri 8/4/17	Thu 10/26/17				
102	Staffing/Occupancy	1 mon	Fri 10/27/17	Thu 11/23/17				

Task	Split	Milestone	Summary	Project Summary	External Task	External Milestone	Inactive Summary	Manual Summary	Manual Summary Rollup	Finish-only	Progress	Deadline
Project: Monterey County Jail Housing												
Date: Wed 12/19/12												
Wed 12/19/12												

Describe Critical Path Method (CPM) experience your firm has had on similar projects.

CRITICAL PATH METHOD (CPM) EXPERIENCE

Critical Path Method (CPM) scheduling is typically used by general contractors on complex construction projects to track multiple tasks with multiple dependencies. For our correctional design projects, Lionakis utilizes Microsoft Project software to create project schedules that identify tasks and durations, milestones, dependencies, responsibilities and resources. These schedules can then be filtered to identify the critical path of the project. These schedules are then used internally by the project team to develop the Full Wall Schedules that are used by the project team to detail the tasks in more detail. The Lionakis correctional team also inserts each project schedule into a master project schedule that allows us to manage our internal resources while working on multiple projects.

For example, the Stanislaus County Juvenile Commitment Center, the fixed dates of State Public Works Board (SPWB) meetings were set into our schedule and used to identify critical milestones that needed to be met in order to have the project on the SPWB agenda for approval of the specific tasks. Using this tool, we were able to identify when critical decisions needed to be made and could also keep the County informed of when their documentation would be required. This process allowed us to cut one month out of the development of construction documents in order to have the project submitted before state funding problems would have delayed the project.

Cost Management: County has a tight budget for this Jail Housing Addition; Provide process for cost management, methods for tracking costs, methods used to recover from a budget/ estimated cost overrun.

COST MANAGEMENT

We understand the importance of adhering to the County's budget and understand the need to *design to a budget, not budget to a design*. We also strongly believe in controlling the project during the design phase where changes can be made with the least financial impact.

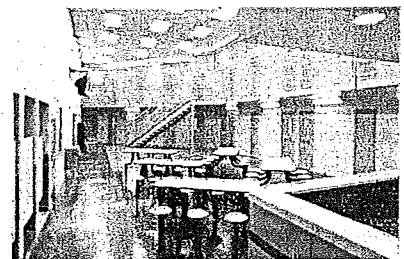
The first step in controlling cost for any construction project is to provide all parties and stakeholders with basic unit costs synthesized from recently built projects of similar size, scope and location. The next step is to clearly identify what the budget represents in terms of construction dollars, soft costs and contingencies. With this information, the design team can provide feedback in terms of prioritizing your scope. We begin each project by designing to your budget, rather than expecting you to budget to our design.

Managing your budget starts with identifying the critical success factors with you and all the stakeholders, and prioritizing them through a collaborative process. The next step is to finitely establish reasonable program requirements within the established budget. Using the set design process described earlier, we would then work to develop our collective vision for the project with involvement and feedback from the team, County and community.

CREATIVE PROBLEM SOLVERS

"We find Lionakis comfortable to work with and good listeners. They get along well with not only City staff but also other project consultants. They are creative problem solvers that became part of our family."

Jim Sequeira
Director, Department of Utilities
City of Sacramento



MINIMIZING COSTS

"Maynard Feist's understanding of construction, excellent construction documents, quality control, knowledge of facility design, material options, operational design efficiencies, proactive approach to potential conflicts and thoughtful recommendations have helped minimize potential change order costs the County might have incurred without his assistance.."

Terry Vernon
Deputy Director
Yolo County Central Services Division

LIONAKIS

COST MANAGEMENT CONTINUED

Opinions of Probable Cost—Throughout the various design stages of the project, and at periodic milestones, Opinions of Probable Cost are developed by the design team in collaboration with a highly experienced consultant, providing continuous validation of the work in progress. At Lionakis, we established a Design Crit that provides expertise in design, constructability, and code issues. The group also provides an independent review of each project to ensure that all your goals are being met.

Additional reviews of the project by our client's staff, as well as any construction or construction management firm are certainly considered beneficial and are always viewed as positive exchanges by our firm. Our commitment is to provide our clients with the greatest level of service and expertise possible for their projects.

Minimizing Operational Costs—Minimizing operational costs is at the heart of our green-oriented practice. Our staff of LEED Accredited Professionals comes to your project with the goal of minimizing the project's impact on the environment and efficient life-cycle costs are a primary tool in achieving that goal. We hold "ecocharettes" in our office for each project and invite our clients, consultants, and staff to attend in search of the best design response for each project.

Systems cost modeling, life cycle analysis and sustainability are just a few of the basic concepts that are exercised to help determine what operational/use costs or extended life opportunities exist for your headquarters. In addition, we employ periodic project team meetings throughout each design phase provide for an open forum for all members to express, debate and improve the project with their expertise.

Value Based Design vs. Value Engineering—At Lionakis, our approach is simple *design to your budget, not budget to our design*. This value based design approach benefits the Monterey Jail Housing Addition project in the event value engineering is necessary, it is a small process of fine tuning, not an extensive process of re-design. For a project to be successful, it requires a well-defined understanding among all team members, beginning in the earliest possible phase and extending throughout the life of your project. A careful analysis of all architectural and engineering systems by the entire project team must be made as the first crucial step in laying the foundation for project cost certainty. In addition, maintenance and operational performance is also analyzed to meet or exceed the expectations of both the user group and the stakeholders.

COST MANAGEMENT EXPENSE		
PROJECT NAME	PROJECT BUDGET	BID COST
San Joaquin Jail Expansion	\$85 million	Ongoing * - Currently on Budget
Elk Grove Medical Office Building Kaiser Permanente	\$19 million	\$19 million
Sac. County Youth Detention Facility Construction Package 1	\$27.2 million	\$25.4 million
Sac. County Youth Detention Facility Construction Package 4	\$14.2 million	\$13.85 million
Sac. County Youth Detention Facility Construction Package 3	\$34.3 million	\$32.6 million
South Sacramento Tower Kaiser Permanente	\$89 million	\$88.2 million
State Office at Butterfield Way	\$171 million	\$171 million

SECTION FIVE

LOCAL PREFERENCE DECLARATION FORM

LOCAL PREFERENCE

Local Business Declaration Form: Any firm who wishes to have the 5% local preference applied to is required to complete and submit with their qualifications package the Local Business Declaration Form attached hereto as ATTACHMENT A. See Section 10 herein for more information regarding County's Local Preference Policy.

Utilizing Small Local Businesses: Briefly summarize how firm would assure maximum participation from small local business in the event that outside services would be needed.

MAXIMIZING LOCAL PARTICIPATION

Lionakis is committed to teaming with local consultants to invest back into your community. Our team is currently comprised of two local consultants who also have experience working with Monterey County. We are committed to teaming with the best consultants for your project. Therefore, if awarded the project, we would like to discuss with you your experiences working with local consultants for the ancillary projects and bolster our local consultant team from there.



AXIOM ENGINEERS HIGHLIGHTS

- Trusted firm in Monterey County providing Mechanical services.
- 13 Projects for Monterey County, 10 of which are correctional projects



RBF HIGHLIGHTS

- Providing Civil Engineering services, RBF Consulting (RBF) has been consistently ranked by Engineering News Record (ENR) Magazine in the Top 100 Design firms in the nation.
- 11 Projects for Monterey County

SECTION SIX

ENVIRONMENTALLY FRIENDLY PRACTICES

ENVIRONMENTALLY FRIENDLY PRACTICES

Summarize all environmentally friendly practices your firm adheres to in the course of doing businesses as relevant to County's Climate-Friendly Purchasing Policy (www.co.monterey.ca.us/admin/policies.htm)

COMMITMENT TO SUSTAINABILITY

As a leader in LEED (Leadership in Environmental and Energy Design) expertise, Lionakis has 80+ LEED Accredited Professionals on staff. Our sustainable project experience includes nearly four million square feet of LEED certified and registered space. Our architects, engineers and designers sit on nationally recognized sustainability boards and commissions.

FIRM'S SUSTAINABLE PRACTICES

As an A/E Design firm we have the advantage to not only include environmentally friendly practices in our firm, but also in the projects we design. The following is a summary of our environmentally friendly practices as relevant to the County's Climate-Friendly Purchasing Policy:

Procure Products that Minimize Environmental Impact and do not have a Negative Effect on Human Health

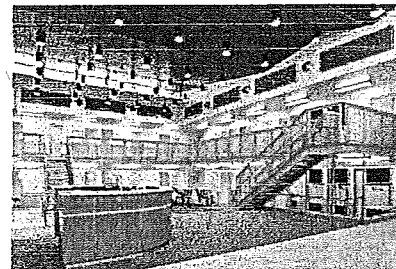
- GreenSeal cleaning products
- Green Power from our local utility company
- Energy Star electronic and computer equipment
- Refurbished office furniture

Promote Green Building

- Design sustainable buildings
- Specify sustainable building products
- Use our offices as laboratories for sustainable technologies and products

Reduce Waste, Reuse, Recycle

- Paper and other office products with high recycled content
- Minimize paper, use electronic documents
- Double sided printing is standard on most office printers
- Compost program at the office
- Disposable kitchen ware is very limited and employees are encouraged to bring their own reusable materials
- Recycling bins are located at all desks, conference rooms, kitchens and other locations throughout the offices
- CFL light bulbs and batteries are all recycled
- Dual flush toilets have been installed
- Air hand driers have been installed



CAN CORRECTIONAL PROJECTS BE SUSTAINABLE?

Yes they can! Although unique in design and operation, Lionakis has experience integrating sustainable solutions on correctional projects. From improvements in material use and waste reduction to indoor air quality and sustainable construction practices, we have practical knowledge of what works. Application of this knowledge results in tangible benefits, such as reducing long-term maintenance and operations costs.

*Sacramento County
Youth Detention Facility*

Lionakis utilized sustainable principles by integrating daylighting and high efficiency chillers and boilers to the new central utility plant to significantly increase energy savings.

Promote Renewable Energy and Low Carbon Fuels:

- Reserved parking for employee carpools
- Reimbursement policy for employees that take public transportation
- Encourage Zip Car rental or Amtrak to travel
- Encourage virtual meetings when possible
- Office location in an urban area offer many options for public transportation and nearby resources (restaurants, grocery store, banks, dry cleaning, etc.) for employees to use when at work

Indicate whether or not your firm is a 'Green Certified' Business and state which governing authority administered the certification.



GREEN CERTIFIED FIRM

Lionakis is certified by the Sacramento Area Sustainable Business program assists businesses and public agencies in taking steps to prevent pollution and conserve resources.

A GREEN CERTIFIED FIRM

Lionakis shares your commitment to sustainability in design and in practice. We are a Green Certified firm through the The Business Environment Resource Center (BERC) through a program called the Sacramento Area Sustainable Business (SASB).

SECTION SEVEN

FEES

FEES.

Sealed Submittal: Contractor shall submit its fees in a separate sealed envelope. Fees should consist of hourly rates for all key personnel assigned to this project and shall also include a list of all expected reimbursable expenses (excluding travel expenses which are not reimbursable for this Agreement), and also all necessary equipment to support associated activities and office space requirements.

FEES

Please refer to separately sealed envelope.

SECTION EIGHT

EXCEPTIONS

EXCEPTIONS

Submit any and all exceptions to this solicitation on separate pages, and clearly identify the top of each page with "EXCEPTION TO MONTEREY COUNTY SOLICITATION #" (indicate the applicable solicitation number). Each Exception shall reference the page number and section number, as appropriate. Contractor should note the submittal of Exception does not obligate the County to revise the terms of the RFP or Agreement.

EXCEPTIONS TO MONTEREY COUNTY SOLICITATION #10401

Lionakis has reviewed the County of Monterey's Request for Qualifications including the County's Sample Agreement and is confident that we will be able to agree to mutually acceptable terms. We believe resolution of minor language changes can be easily attained and have not had difficulty resolving terms with clients similar in nature to the County of Monterey.

Lionakis' comments and recommended changes are identified by page number and section as required. *Please note that these recommended changes are presented for purposes of further discussions with the County and are not intended to be viewed as non-negotiable contract requirements of Lionakis.*

Page 11, Article 6.2.22 – Using Cost Estimate to Establish Project Budget

Due to our lack of control over the cost or availability of labor, equipment or materials, Lionakis recommends minor modification of this article to read as follows:

CONTRACTOR shall be advised that the Construction Cost Estimate developed at the completion of Design Development Phase will be used to establish the overall budget for the Project. Accordingly, this estimate is required to be ~~very~~ accurate to ~~ensure~~ support proper funding. *In providing the Construction Cost Estimate, the County understands that the CONTRACTOR has no control over the cost or availability of labor, equipment or materials, or over market conditions or the General Contractor's method of pricing, and that the CONTRACTOR's Construction Cost Estimate costs are made on the basis of the CONTRACTOR's professional judgment and experience. The CONTRACTOR makes no warranty, express or implied, that the bids or the negotiated cost of the Work will not vary from the CONTRACTOR's Construction Cost Estimate cost.*

EXCEPTIONS TO MONTEREY COUNTY SOLICITATION #10401

Page 23, Article SI.0 Performance of the Agreement, Sub Article SI.3

When providing professional design services, architectural/engineering firms cannot "warrant" a product and is therefore an uninsurable provision as stated. Lionakis recommends the following minor modification of this article in order to provide for a more measurable standard of care related to the performance of services that would be provided:

~~CONTRACTOR warrants that CONTRACTOR and CONTRACTOR's~~
~~agents, employees, and subcontractors performing~~ *shall perform*
~~services under this AGREEMENT are specially trained, experienced,~~
~~competent in a manner consistent with that degree of care and skill~~
~~ordinarily exercised by members of the same profession currently practicing~~
~~under similar circumstances at the same time and in same or similar~~
~~locality, and shall be~~ appropriately licensed *as required by law*, to perform
the work and deliver the services required under this AGREEMENT and
are not employees of the County, or immediate family of an employee
of the County.

EXCEPTIONS TO MONTEREY COUNTY SOLICITATION #10401

Page 30, Article S12.0 Compliance With Applicable Laws, Sub Article S12.1

Lionakis requests clarification to the terms "permits" and "all charges and fees" as stated in the last sentence of this sub article. Typically permits, charges and fees are to be paid for by the Owner or General Contractor; therefore Lionakis suggests modification of the last sentence as follows, based on our interpretation:

CONTRACTOR shall *assist the County in procure* ~~procuring~~ all permits and licenses, ~~pay all charges and fees and~~ *in* give all notices required by law in the performance of the services.

EXCEPTIONS TO MONTEREY COUNTY
SOLICITATION #10401

Page 32, Article S21.0 Warranty by Contractor, Sub Article S21.1

Because the language as stated is typical of those requirements of a General Contractor and design professional are not constructing, Lionakis request deletion/strike out of the following language in this article.

~~CONTRACTOR shall fully warrant all services it performs against poor and inferior quality or workmanship for a period of not less than one (1) year from date of final acceptance by the County. Contractor shall repair or replace any inoperable materials or equipment in a timely manner during warranty period.~~

EXCEPTIONS TO MONTEREY COUNTY SOLICITATION #10401

Page 33, Article S23.0 Legal Disputes, Sub Article S23.4

As is both customary in the architectural and engineering industry and strongly suggested by Lionakis' Professional Liability insurance carrier, Lionakis requests modification of this sub article to allow for a stepped alternate dispute resolution process prior to trial by jury. Recommended language to be added as follows:

~~The parties agree to waive their separate rights to a trial by jury. This waiver means that the trial will be before a judge.~~

In the event of a dispute arising out of or relating to this Agreement or the services to be rendered hereunder, the County and the CONTRACTOR agree to attempt to resolve such disputes in the following manner:

First, the parties agree to attempt to resolve such disputes through direct negotiations between the appropriate representatives of each party.

Second, if such negotiations are not fully successful, the parties agree to attempt to resolve any remaining disputes by formal nonbinding mediation conducted in accordance with rules and procedures to be agreed upon by the parties. Both parties agree that the expenses associated with nonbinding mediation shall be shared equally.

Third, if the dispute or any issues remain unresolved after the above steps, the parties agree to a trial by judge.

APPENDIX

Appendix: Contractor may provide any additional information that it believes to be applicable to this qualifications package and include such information in an Appendix section.

EXEMPLARY SERVICE

Lionakis understands that the quality of our work is often the sole basis for how our performance is evaluated. We deliver high quality professional services and design projects of lasting value through the teaming of qualified, experienced and talented professionals. The following pages are some examples of our teams' exemplary service as written by our clients.



STEPHEN L. DeROSS
ASST. CHIEF PROBATION OFFICER
ASST. PAROLE OFFICER

COUNTY OF SACRAMENTO
Probation Department
CONSTRUCTION SPACE PLANNING
9555 KIEFER BLVD, SACRAMENTO, CALIFORNIA 95826
FAX (916) 875-4206

VERNE L. SPEIRS
CHIEF PROBATION OFFICER
COUNTY PAROLE OFFICER



SUZANNE COLLINS
ASST. CHIEF PROBATION OFFICER
ASST. PAROLE OFFICER

Bruce Starkweather
President
Lionakis Beaumont Design Group Inc.

Dear Bruce:

As the Sacramento County Probation Department is nearing the completion of the Warren E. Thornton Youth Center, 60-bed addition and renovation project, I wanted to take a few moments to express my appreciation for the outstanding job your firm has provided from programming to design through construction. There is no doubt in my mind that this facility when completed will receive national design recognition. I would be remiss if I did not mention the outstanding leadership and direction Maynard Feist, Associate, has provided for the duration of this project. With Maynard's expertise your firm has exceeded our expectations.

Sincerely,

Gary Steele
Chief Deputy Probation Officer



COUNTY OF SACRAMENTO Probation Department

3201 FLORIN-PERKINS ROAD, SACRAMENTO, CALIFORNIA 95826
TELEPHONE (916) 875-0273
FAX (916) 875-0347



SUZANNE M. COLLINS
INTERIM CHIEF PROBATION OFFICER
INTERIM COUNTY PAROLE OFFICER

April 21, 2009

Maynard Feist
Lionakis Design Group
1919 19th Street
Sacramento, CA 95811-6714

I would like to personally convey my appreciation for your dedication and exceptional work with the recent construction project at the Warren E. Thornton Youth Center, which established compliance with California Code of Regulations Title 24 regarding 36" bed clearance.

A complex construction project of this magnitude, which required demolishing portions of rooms, retrofitting walls, anchoring standardized beds and scheduling materials and furnishings, is a daunting assignment under any circumstance. The construction team not only successfully accomplished this project, but they did so ahead of an already demanding deadline without disrupting activities and programming within the institution. Your attention to detail and efficiency were key elements to the success of this construction project.

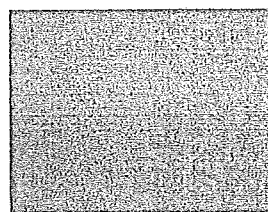
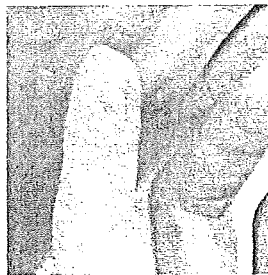
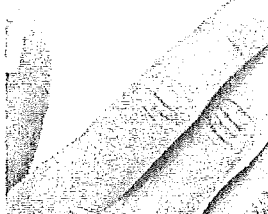
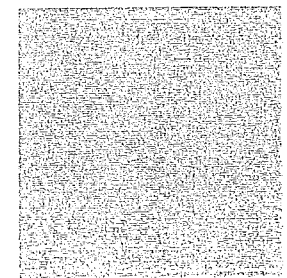
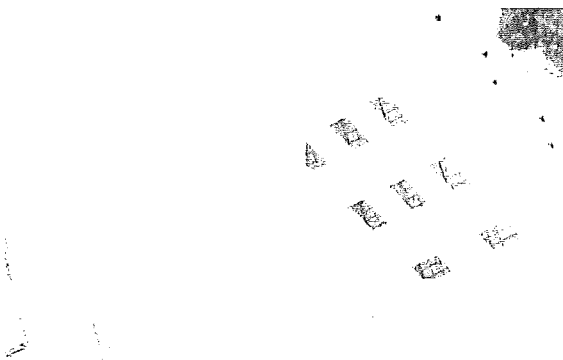
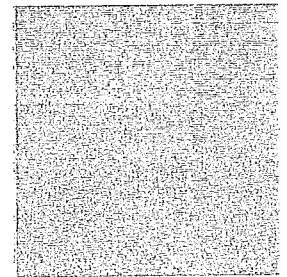
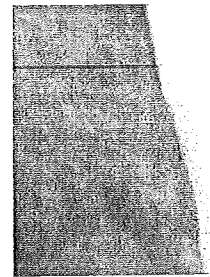
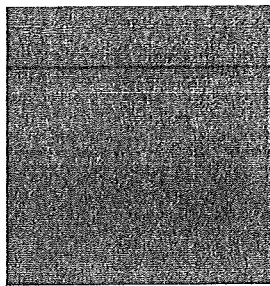
Furthermore, your cooperation, coordination and effective communication with probation staff helped ensure that vital information was available when needed, which expedited the entire process.

Once again, I truly appreciate your tireless effort, professionalism and hard work.

Sincerely,

A handwritten signature in cursive script, appearing to read "Suzanne M. Collins".

Suzanne M. Collins
Interim Chief Probation Officer



LIONAKIS HOURLY RATES

CLASSIFICATION	HOURLY RATES
----------------	--------------

LEADERSHIP

Managing Principal	\$218
Principal	\$207
Associate Principal	\$190
Senior Associate/Director of Health Care Planning	\$179
Associate/Senior Project Director	\$174

ARCHITECTURAL SERVICES

Senior Project Director	\$174
Project Director	\$157
Senior Project Manager	\$146
Specifications Writer	\$146
Architectural Rendering Specialist	\$140
Senior Architect	\$129
Project Manager	\$129
Project Architect	\$123
Senior Designer	\$118
Staff Architect	\$112
Project Designer	\$101
Staff Designer	\$90
Designer	\$84
Senior Drafter	\$84
Specification Technician	\$84
Drafter	\$73

INTERIOR DESIGN SERVICES

Project Director	\$146
Project Manager	\$129
Senior Designer	\$118
Project Designer	\$95
Staff Designer	\$78
Designer	\$67

PLANNING SERVICES

Senior Planner	\$123
Staff Planner	\$84

CLASSIFICATION	HOURLY RATES
----------------	--------------

STRUCTURAL ENGINEERING SERVICES

Project Director	\$151
Senior Project Manager	\$151
Senior Engineer/Project Manager	\$146
Project Engineer	\$140
Staff Engineer	\$123
Senior Designer	\$118
Senior Drafter	\$118
Project Designer	\$112
Staff Designer	\$106
Project Drafter	\$101
Designer	\$95
Staff Drafter	\$90
Drafter	\$73

PROJECT SUPPORT SERVICES

Graphics Creative Director	\$134
Visualization Specialist	\$110
Graphic Designer	\$101
Senior Project Coordinator	\$78
Project Coordinator	\$67
Staff Technician	\$56
Office Assistant	\$50
Consultants	Direct Cost + 10%

REIMBURSABLES

The following is a breakdown of anticipated reimbursables for the project (excluding mileage) by phase.

Program Validation*	\$3,250
Schematic Design*	\$6,920
Design Development*	\$7,550
Construction Documents*	\$13,280
Bidding*	\$2,150
Construction Administration*	\$20,580

*The above noted reimbursables do not include the costs associated with the printing of plans and specification for distribution to contractors and/or builders exchanges. Upon meeting with Monterey County to discuss your needs and the scope of work in detail, we will then have a better understanding of the project and deliverables to create a more comprehensive proposal.

CONSULTANT HOURLY RATES

CLASSIFICATION	HOURLY RATES
----------------	--------------

AXIOM ENGINEERING - MECHANICAL/PLUMBING ENGINEERING

Principal	\$185
Department/Branch Manager	\$175
Associate	\$170
Senior Project Engineer	\$160
Commissioning Agent II	\$165
Commissioning Agent I	\$140
Senior Engineer	\$155
Project Engineer	\$150
Project Manager	\$150
Life Safety Specialist	\$150
Engineer III	\$135
Engineer II	\$130
Engineer I	\$125
Senior Designer	\$130
Commissioning Technician	\$125
Designer III	\$125
Designer II	\$120
Designer I	\$115
CADD Network Consulting	\$135
Engineering Technician	\$110
CADD III	\$100
CADD II	\$95
CADD I	\$90
Administration	\$90

CLASSIFICATION	HOURLY RATES
----------------	--------------

KEN RUBITSKY & ASSOCIATES - ELECTRICAL ENGINEERING

Principal	\$165
Engineer	\$135
Project Manager	\$110
Designer	\$95
Drafter	\$80
Clerical	\$60

CAPITAL ENGINEERING - MECH./PLUMB. ENG. PEER REVIEW

Mechanical Engineer Peer Review	\$220
Plumbing Engineer Peer Review	\$165
Senior Principal	\$220
Principal	\$200
Director	\$190
Senior Project Manager	\$175
Project Manager	\$165
Field Services	\$160
Senior Engineer	\$145
Engineer	\$135
Senior Designer	\$125
Designer	\$115
Technician/CADD	\$105
Project Administrator	\$90
Senior Administrator	\$60
Clerical/D.DE. Administrator	\$40

Reimbursable expenses include: Postage other than for general correspondence; plan check permit and inspection fees required by governing bodies; plotting of CADD originals; printing and reproduction costs applicable to project submissions to client or review agencies; toll calls; Overnight or daily delivery service when required to meet a need of the client not the fault of the Engineer or to meet a previously agreed to submission date.

Reimbursable expenses will be billed at actual cost plus a service charge of 10%.

CONSULTANT HOURLY RATES

CLASSIFICATION	HOURLY RATES
----------------	--------------

RBF CONSULTING - CIVIL ENGINEERING

Principal	\$225
Senior Project Manager	\$200
Project Manager	\$195
Technical Manager	\$180
Senior Engineer	\$163
Project Engineer III	\$148
Project Engineer II	\$135
Project Engineer I	\$120
Design Technician	\$97
Assistant Engineer	\$93
2 Person Survey Crew	\$245
1 Person Survey Crew	\$165
Licensed Surveyor	\$175
Field Supervisor	\$172

RELIABLE COST ENGINEERING - COST ESTIMATOR

Cost Estimator	\$120
----------------	-------

AVS ENGINEERS

Principal/Project Manager	\$166
Senior Engineer	\$152
Systems Engineer	\$148
Senior Designer	\$115
Designer/Technician	\$92
Administrative	\$73
