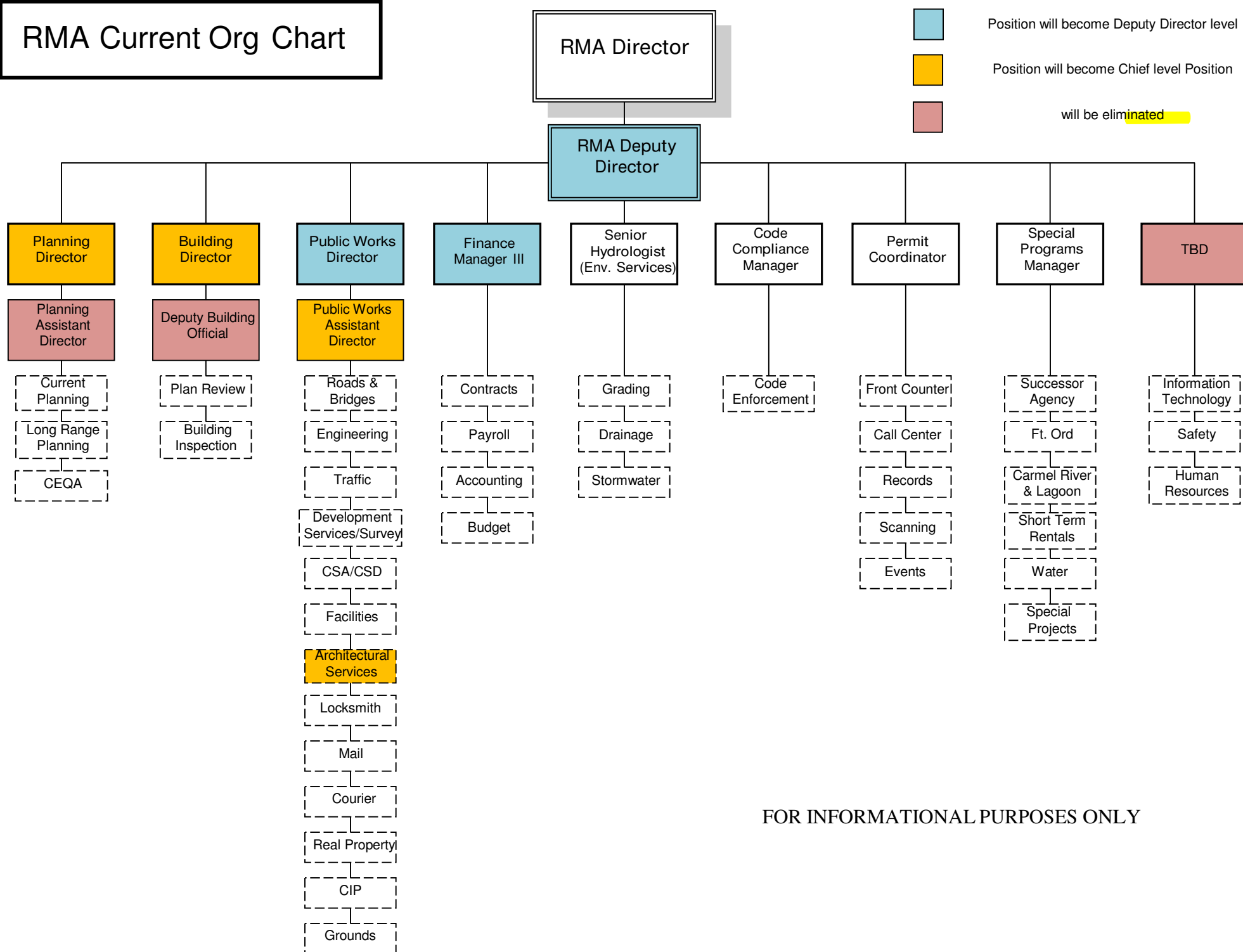


RMA Current Org Chart



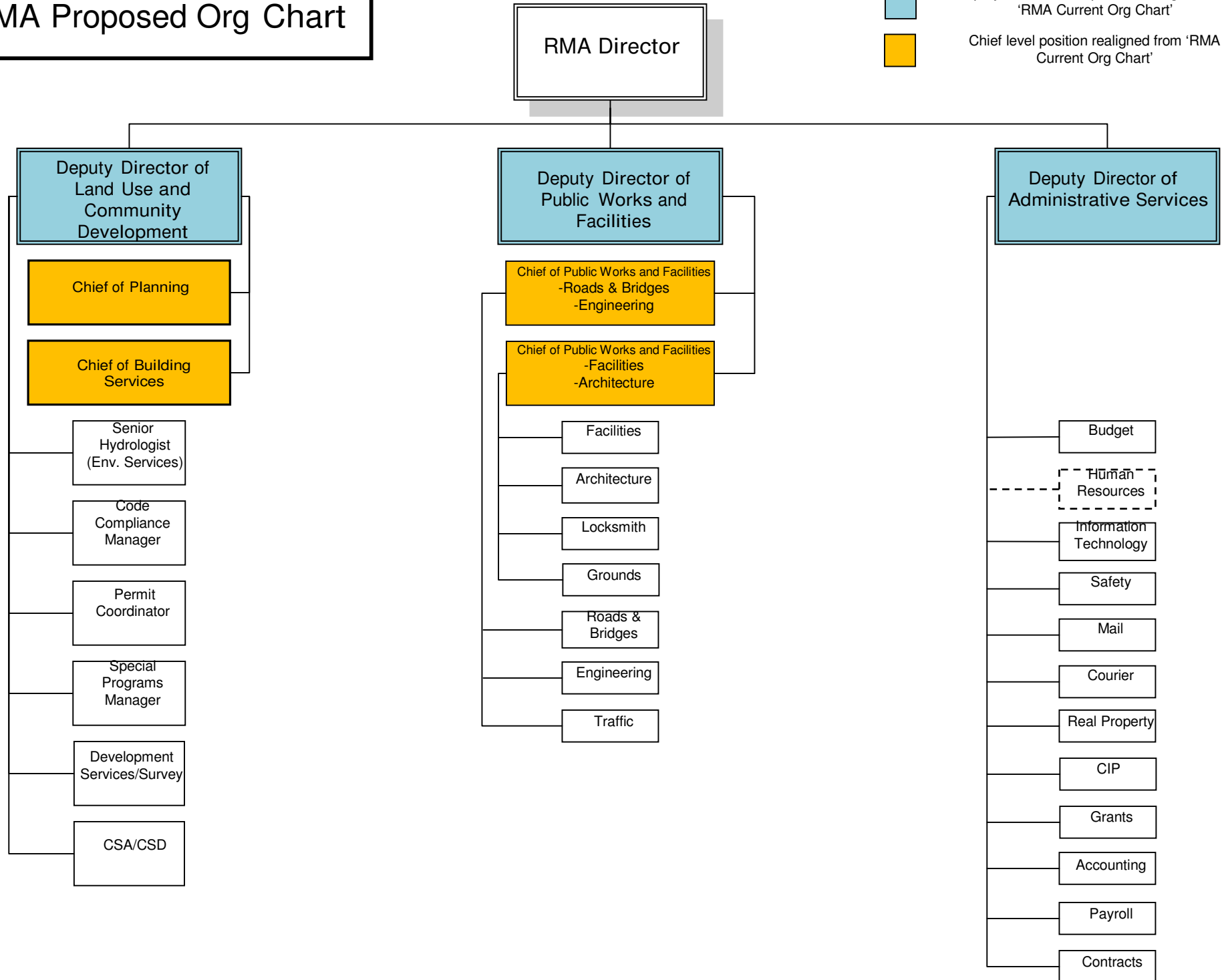
RMA Proposed Org Chart



Deputy Director level position realigned from 'RMA Current Org Chart'



Chief level position realigned from 'RMA Current Org Chart'



PHASE I									
EXISTING					PROPOSED				CHANGE
12C40 - Deputy Director Resource Management Agency	181,500	Y	to		Deputy Director of Land Use and Community Development	181,500	Y		0%
11A29 - Director of Planning	181,500	Y	to		Chief of Planning	147,504	X		-19%
11A28 - Director of Building Services	163,356	Y	to		Chief of Building Services	142,116	X		-13%
11A19 - Public Works Director	212,808	Y	to		Deputy Director of Public Works and Facilities	193,464	Y		-9%
12C41 - Assistant Public Works Director	158,292	Y	to		Chief of Public Works and Facilities	161,832	X		2%
20B94 - Finance Manager III	139,379	X	to		Deputy Director of Administrative Services	145,716	Y		5%
XXXXX - Allocation to be Determined	146,338	Y	Del						-100%
12C19 - Assistant Director of Planning	147,504	Y	Del		Currently Unfunded - not included in cost saving				
14K68 - RMA Administrative Director	120,660	X	Del		Currently Unfunded - not included in cost saving				
11A03 – Director of General Services	197,796	Y	Del						
TOTAL Phase I		1,183,173				972,132			-18%
						SAVINGS - PHASE I			
						(211,041)			

EXISTING	
Y	8
X	2
TOTAL	10

PROPOSED		CHANGE
Y	3	-5
X	3	1
TOTAL	6	-4

PHASE 2							
EXISTING				PROPOSED			CHANGE
14K63 - Architectural Services Manager	144,804	X	to	Chief of Public Works and Facilities	161,832	X	12%
30D30 - Deputy Building Official	126,060	X	Del				-100%
TOTAL Phase 2	270,864				161,832		-40%
					SAVINGS - PHASE II		
					(109,032)		

EXISTING	
Y	0
X	2
TOTAL	2

PROPOSED		CHANGE
Y	0	0
X	1	-1
TOTAL	1	-1

SUMMARY							
EXISTING				PROPOSED			CHANGE
Phase 1	1,183,173		to	Phase 1	972,132		-18%
Phase 2	270,864		to	Phase 2	161,832		-40%
TOTAL Phase I	1,454,037				1,133,964		-22%
					TOTAL SAVINGS		
					(320,073)		

EXISTING	
Y	8
X	4
TOTAL	12

PROPOSED		CHANGE
Y	3	-5
X	4	0
TOTAL	7	-5