

LAGUNA SECA RACETRACK EROSION CONTROL PROJECT IN THE FORT ORD NATIONAL MONUMENT

- **Erosion Issue:** Monterey County has worked with the Bureau of Land Management (BLM) for several years to address a significant erosion problem caused in part by runoff emanating from the County-owned Laguna Seca Raceway and impacting adjacent lands in the Fort Ord National Monument (Monument).
- **Identifying Potential Solutions:** The County retained an engineering firm to investigate the scope of the erosion problem and identify potential mitigation measures and associated cost estimates for the affected area. Since most of the mitigation would occur on lands currently within the Monument, the County seeks to work cooperatively with BLM to identify a long term solution to the erosion problem that minimizes administrative burdens and costs to both entities.
- **History 1957-2006:** The U.S. Army built Laguna Seca Racetrack in 1957 with no formal drainage system, and watershed runoff flowed naturally down slope and into the gully below. In 1974, the race track was dedicated to the County, and at some point a storm drain inlet was installed at Turn 6 to collect surface water flowing from Turn 7 to Turn 6. The water collected in the inlet was initially discharged via an 18-inch diameter pipe into the head of the drainage swale located below and east of Turn 6. Significant erosion soon occurred in this swale below the outlet.
- **History 2006-2012:** In 2006, Turn 6 was widened, and new lines of storm drain inlets were constructed along the sides of the track near Turn 6 and the water was re-routed to a dispersion trench constructed along the existing bike path to the south. This detention/dispersion system suffered from clogging/siltation and overflow, and in 2008 or 2009 the system was bypassed with a temporary pipe that created a secondary erosion ravine to the south. The bypass pipe currently extends downslope approximately 600 feet, and discharges into the main ravine.
- **Current Status:** Prior to 2012, BLM interfaced directly with the Sports Car Racing Association of the Monterey Peninsula (SCRAMP) – the racetrack operator – on the issuance of Right of Way (ROW) permits needed to perform remediation work on BLM land. In 2012, the Monument was established, SCRAMP was unable to meet its ROW permit obligations, and BLM reassigned the ROW to the County. In 2014, the County, with guidance from BLM's local field manager and staff geologist, selected a geotechnical engineering firm to develop a long term solution to the drainage and erosion issue. The County received a preliminary report in January 2016. The final report with specific mitigation and remediation alternatives is expected later this year.
- **Economic Impact:** It is estimated that Laguna Seca Raceway generated in excess of \$80 million in direct spending on hotels, restaurants, retail goods and the like during the 2015 season.

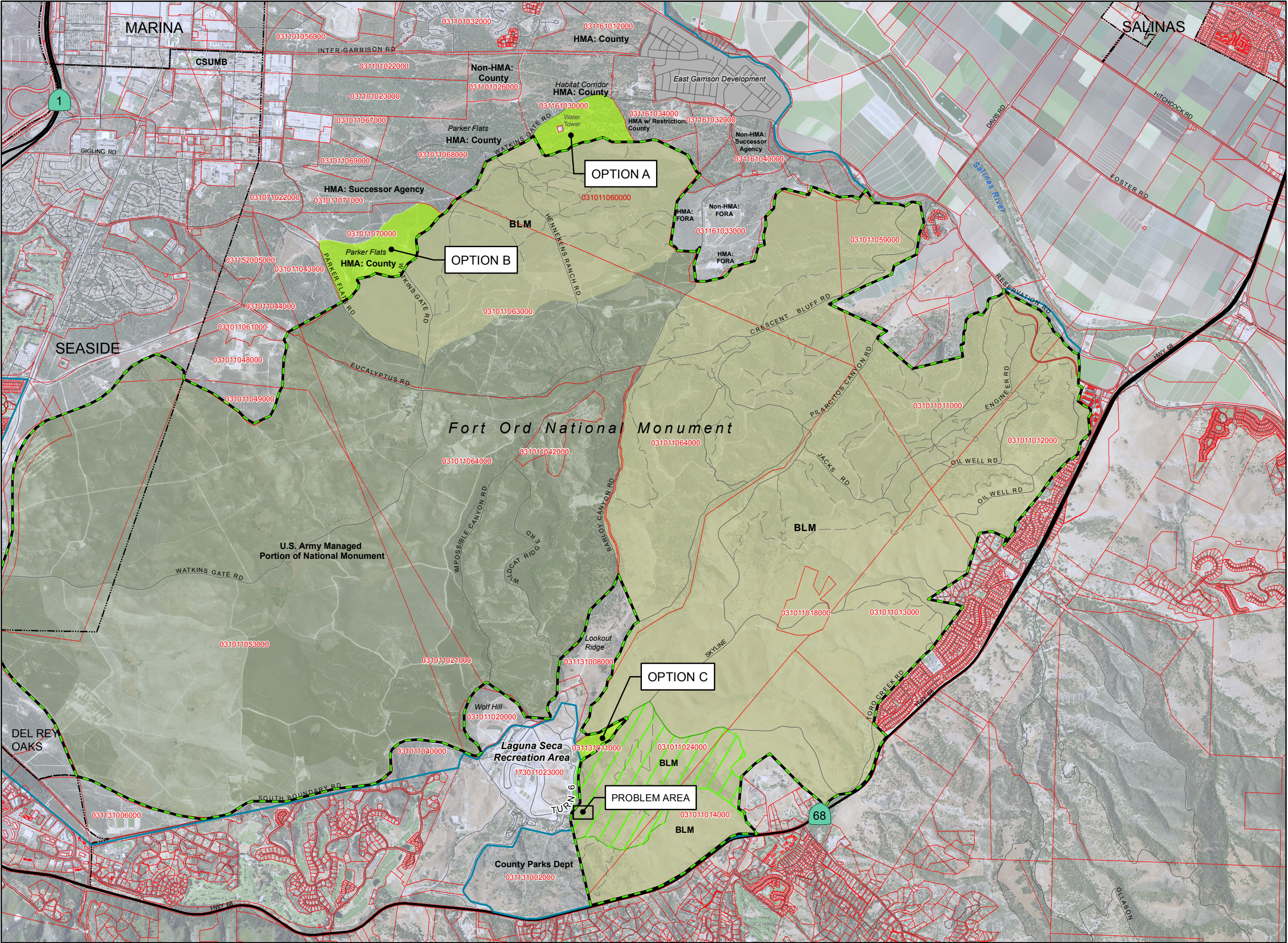
REQUESTED ACTION/STRATEGY

- **Determine Authorities:** The County is interested in learning whether and to what extent the BLM has the authority to convey certain lands in the Monument to the County for the purpose of remediating the erosion issue discussed above.
- **Possible Solution:** The County has had preliminary discussions with local BLM officials, and would like to further explore, the transfer of certain federal lands to the County, through a land exchange or boundary adjustment, to help facilitate the remediation and mitigation measures deemed necessary to protect the property from further erosion and landslides.

CONTACT: Nicholas E. Chiulos

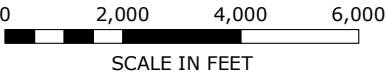
Assistant County Administrative Officer, Monterey County
(831) 755-5145 / chiulosn@co.monterey.ca.us



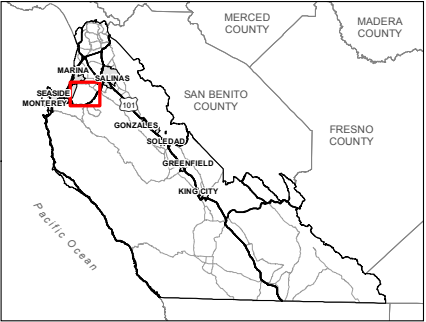


VICINITY MAP
LAGUNA SECA
RECREATION AREA
& FORMER FORT ORD

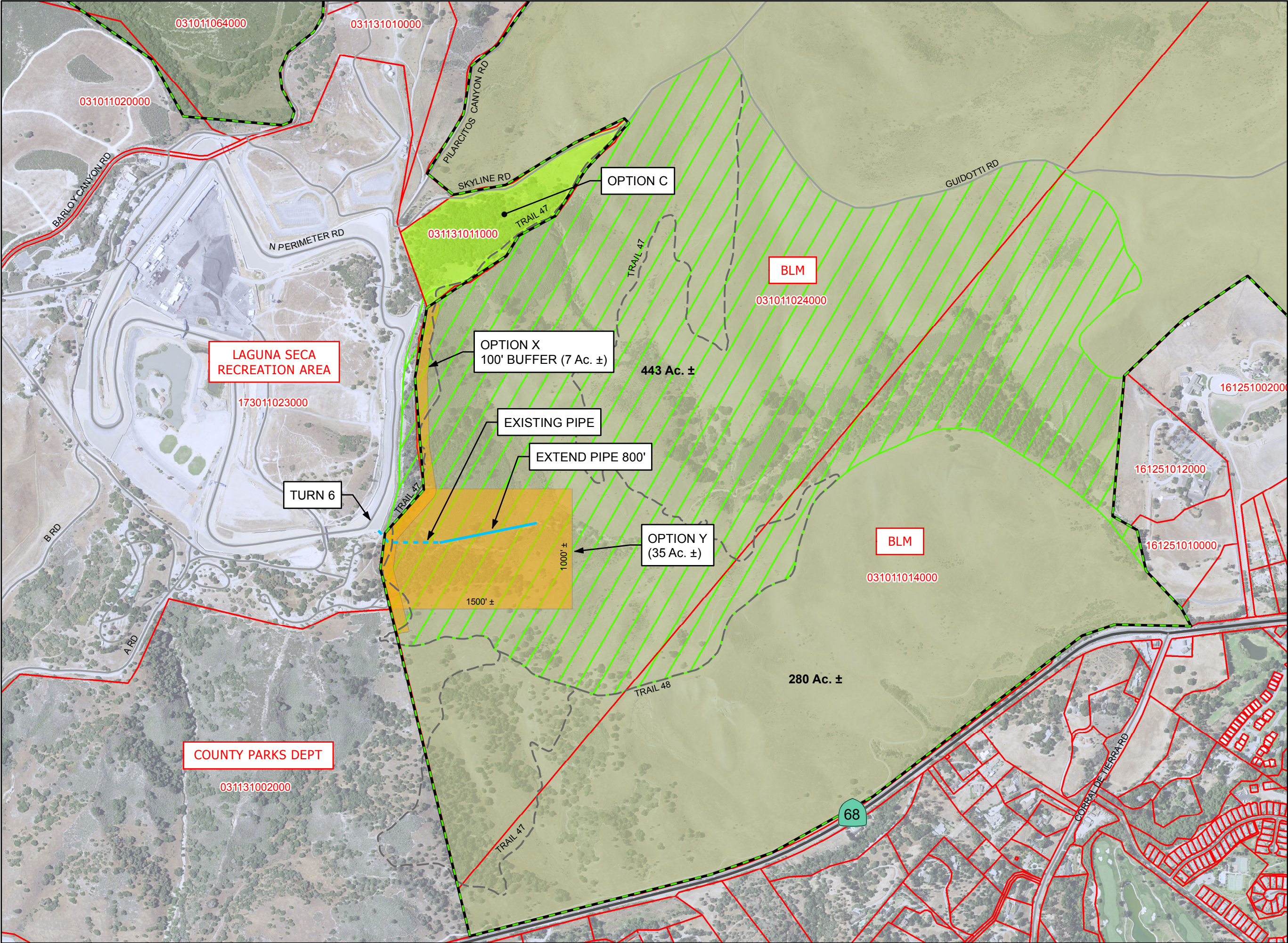
- LEGEND
- COUNTY TO BLM OPTIONS
 - BLM LAND
 - FEDERAL LAND
 - FORMER FORT ORD
 - FORT ORD NAT. MONUMENT
 - PARCEL
 - WATERSHED
 - CITY LIMITS
 - HIGHWAY
 - ROAD CENTERLINE
 - BLM TRAIL



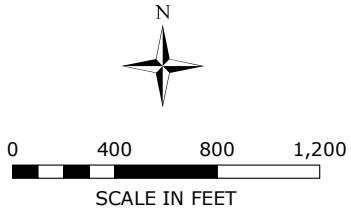
LOCATION MAP



FORT ORD
NATIONAL MONUMENT
LAGUNA SECA RECREATION
AREA BOUNDARY



- LEGEND
- BLM TO COUNTY OPTIONS
 - COUNTY TO BLM OPTIONS
 - BLM LAND
 - FEDERAL LAND
 - FORT ORD NAT. MONUMENT
 - WATERSHED
 - PARCEL
 - PROPOSED PIPE
 - EXISTING PIPE
 - ROAD CENTERLINE
 - HIGHWAY
 - BLM TRAIL



FORD ORD
NATIONAL MONUMENT
NORTHERN BOUNDARY

- LEGEND
- COUNTY TO BLM OPTIONS
 - BLM LAND
 - FEDERAL LAND
 - FORMER FORT ORD
 - FORT ORD NAT. MONUMENT
 - PARCEL
 - CITY LIMITS
 - HIGHWAY
 - ROAD CENTERLINE
 - BLM TRAIL

