

Exhibit G

This page intentionally left blank.

I, Leon Baling, hereby certify that this map correctly represents a survey made by me during the month of August, 1939, that the survey is true and complete as shown, that the monuments are of the proper size and material, and that the measurements and calculations are correct and sufficient to enable the survey to be retraced.

Salinas, California
September 5, 1939
Leon Baling
Registered Civil Engineer
Registration Certificate No. 1215

I, H. C. Casper, County Surveyor of the County of Monterey, State of California, hereby certify that the above mentioned map is a true and correct copy of the original map as it appeared on the tentative map approved by the Monterey County Planning Commission on August 28, 1939, that all provisions of the California Subdivision Map Act of Monterey County Ordinance No. 374 and all other applicable laws and ordinances have been complied with, and that a true and correct copy of the map is technically correct.

Salinas, California
September 5, 1939
H. C. Casper
County Surveyor

I, C. J. Jay, Clerk of the Board of Supervisors of the County of Monterey, State of California, do hereby certify that said Board approved the within map for Subdivision of the land shown thereon, and that the same is a true and correct copy of the original map as it appeared on the tentative map approved by the Monterey County Planning Commission on August 28, 1939, that all provisions of the California Subdivision Map Act of Monterey County Ordinance No. 374 and all other applicable laws and ordinances have been complied with, and that a true and correct copy of the map is technically correct.

Salinas, California
September 5, 1939
C. J. Jay
Clerk of the Board of Supervisors

Filed for Record at the request of
this map of the County of Monterey, State of California, in Volume 4 of the Records of Monterey County, California, at Page 3.

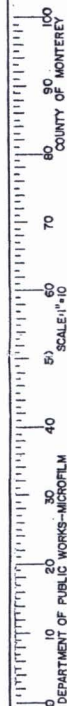
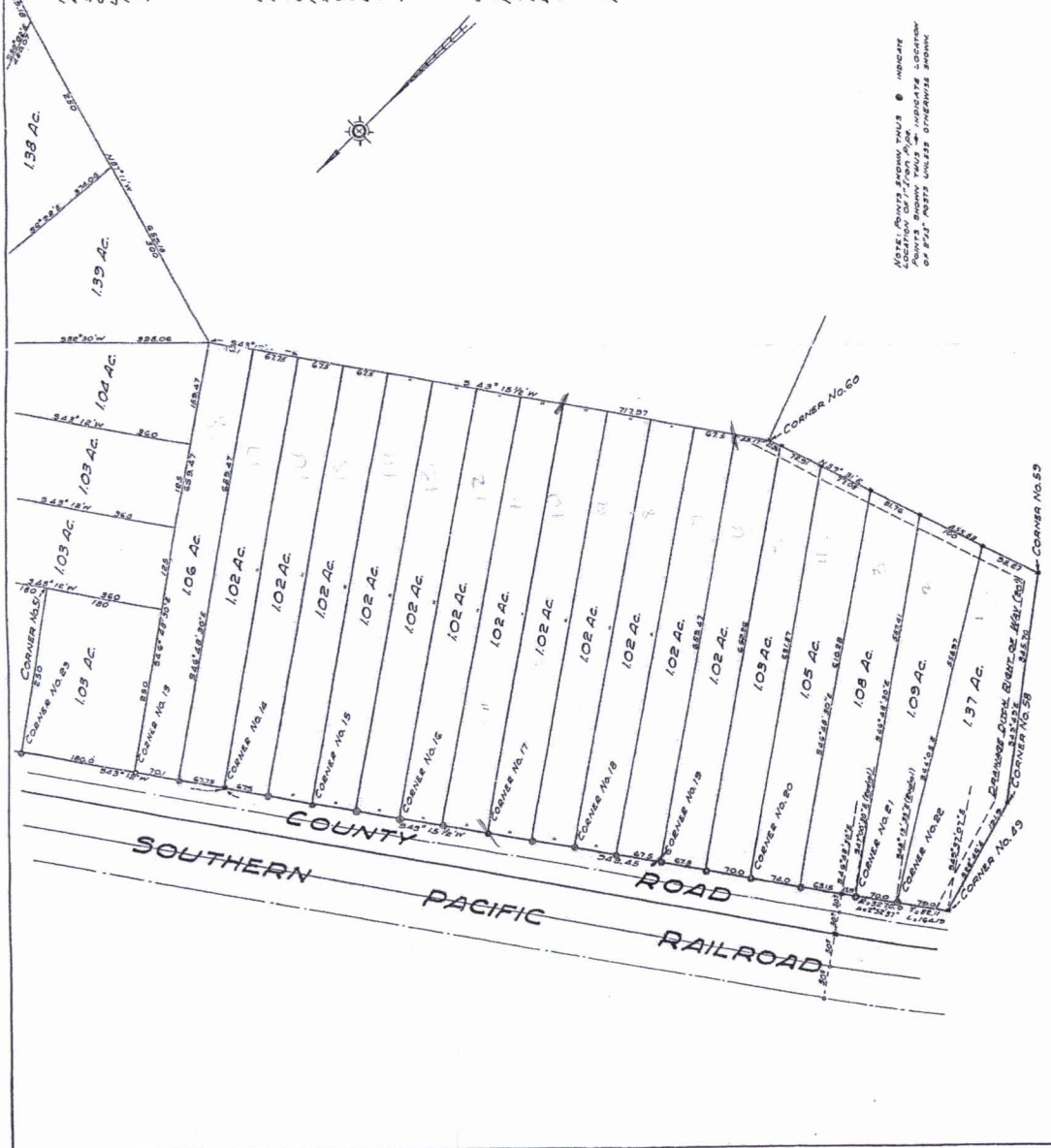
John E. Wallace
County Recorder
by *Robert L. Jay*
Deputy
Fee D.H. 6

SHEET 1 OF 4 SHEETS
MUNTEREY COUNTY SURVEYORS, INC.
REGISTERED CIVIL ENGINEERS
SALINAS, CALIF.

LICENSED SURVEYORS MAP
LAS LOMAS TRACT NO. 6.

LOCATION RANCHO BOLSA DE SAN
CARLOS MONTEREY COUNTY, CALIF.
MADE FOR JOHN T. PORTER CO.
SCALE 1"=100 FT. DATE SEPT. 1939
SURVEYED BY L.B. DRAWN BY C.H. JOB NO. 2425

NOTE: POINTS SHOWN WITH * INDICATE
POINTS SHOWN WITH + INDICATE LOCATION
OF 50' POSTS UNLESS OTHERWISE SHOWN



DEPARTMENT OF PUBLIC WORKS-MICROFILM

This page intentionally left blank.