

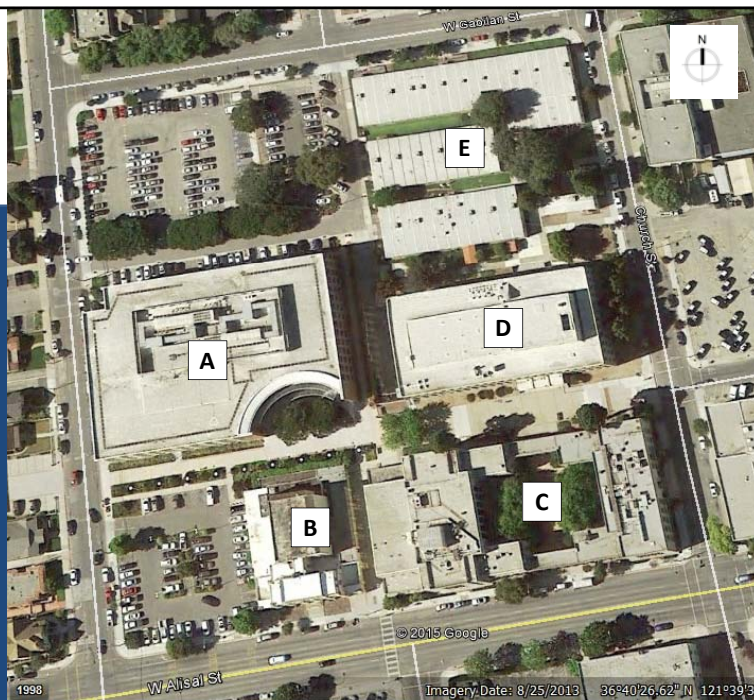


## OLD MONTEREY COUNTY JAIL 168 W. ALISAL STREET SALINAS



### PLAN LEGEND

- A. GOVERNMENT CENTER
- B. OLD JAIL
- C. EAST/WEST WING
- D. COURTHOUSE
- E. GOVERNMENT CENTER MODULAR COMPLEX

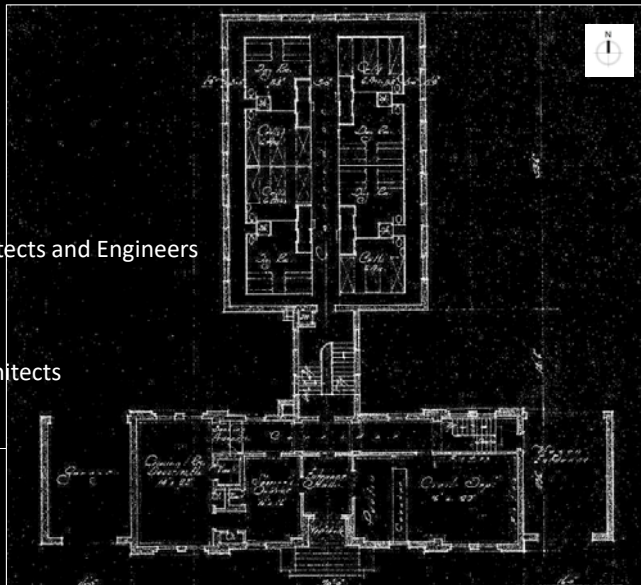


MONTEREY COUNTY GOVERNMENT CENTER CAMPUS



Original Building (c. 1930)  
Reed & Corlett, Architects and Engineers  
Oakland, CA

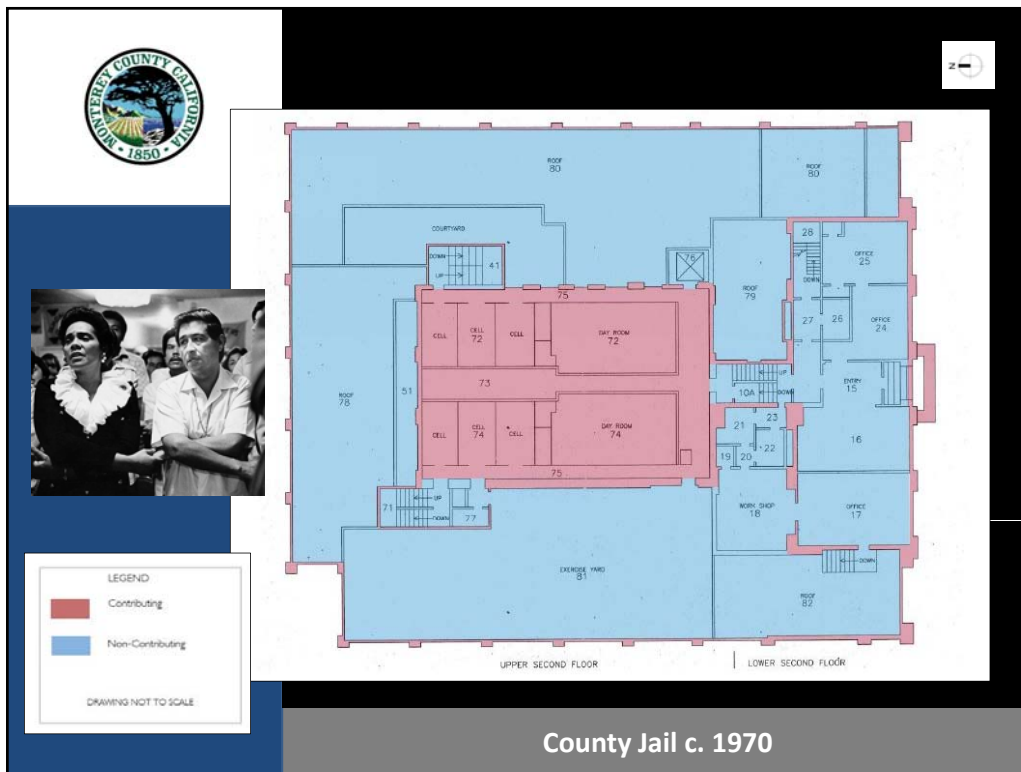

Additions (c. 1950)  
Belli, Fox & Kuska Architects  
Salinas, CA



County Jail c. 1930




County Jail c. 1970


**MOTHBALLING HISTORIC BUILDINGS**  
 PRESERVATION BRIEF 31; SEPTEMBER 1993  
 U.S. DEPARTMENT OF THE INTERIOR  
 NATIONAL PARKS SERVICE (NPS)

- Documentation Phase
  - September 1998 - March 2014
    - Hazardous Materials Inspection Reports issued
    - Dept. of Parks and Rec. Historic Inventory conducted
    - Condition Reports Issued
    - Microbial Evaluation Reports Issued
    - Historical Monograph Published
    - Historic Resources Evaluation Supplement conducted
    - Historic Analysis and Reuse Studies conducted
- Stabilization Phase
  - September 2002- January 2013
    - Hazardous Materials Abatement conducted
    - Weatherization, Cleanup and Encapsulation conducted
- Mothballing Phase
  - Pre-2007 – April 2014
    - Utility services terminated
    - Closure of all openings/penetrations
    - Intermittent surveillance monitoring


**Past Activities**




	<u>APPROX. AREA</u>
Scheme 1 – Remove Jail/Convert to parking or landscaped area	17,700 GSF
Scheme 2 - Save Historic Alisal Facade with New Building behind	20,550 GSF
Scheme 3 - Retain Admin Wing with New Building behind	20,550 GSF
Scheme 4 - Rehab Original 1930 Construction with New First Floor	22,650 GSF
Scheme 5 - Full Rehabilitation of Entire Jail	23,325 GSF
Scheme 6 - Full Preservation (Mothballing) Facility	30,095 GSF
Scheme 7 - Alisal Façade Preservation with Park	N/A
Scheme 8 - 1930 Restoration of Original Jail	20,000 GSF
Scheme 9 – Remove Jail/Expand site into Park	N/A




Scheme 1




Scheme 2




Scheme 3



Scheme 4




Scheme 5



Scheme 6

Recent Activity

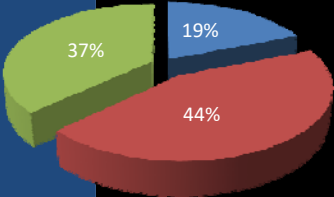


### COMMUNITY STAKEHOLDERS

SUMMER 2015-SPRING 2016

SURVEY CONDUCTED BY RMA-ARCHITECTURAL SERVICES

Community Stakeholders included Preservationists, Historians, Neighbors, Salinas Residents, Educators, Municipal Officials, Business Groups, and State Politicians.



Response	Percentage
Opposed to Demolition	19%
In Favor of Replacement	44%
Failed to Respond	37%

Caesar Chavez Foundation indicated “interest in replacement with a space for civic engagement.”

Senator Bill Monning acknowledged that “some type of commemorative use of the Old Jail Site is warranted.”

Community Outreach



September 13, 2016

The Board of Supervisors selected a Preferred Option for a project at the Old Jail Site to establish a Project Description needed as part of the California Environmental Quality Act (CEQA) review process.

The Preferred Option for a project at the Old Site is:

- To demolish the Old Jail;
- Remove the existing Alisal/Capital Street Parking Lot;
- Create a new urban space for civic engagement while commemorating the historicity of the site;
- Relocate and/or expand parking.

**Future Activity**