

Studying Threats Using Satellite GPS

- Locate Nests
- Locate Feeding Sites
- Identify Flight Patterns



2009 Report



California Condors and the Potential for Wind Power in Monterey County



"Along a narrow strip on the Salinas Valley floor between north of King City and south of Gonzales appears to be one location where the risk to condors is probably lowest and a sufficient wind resource exists."

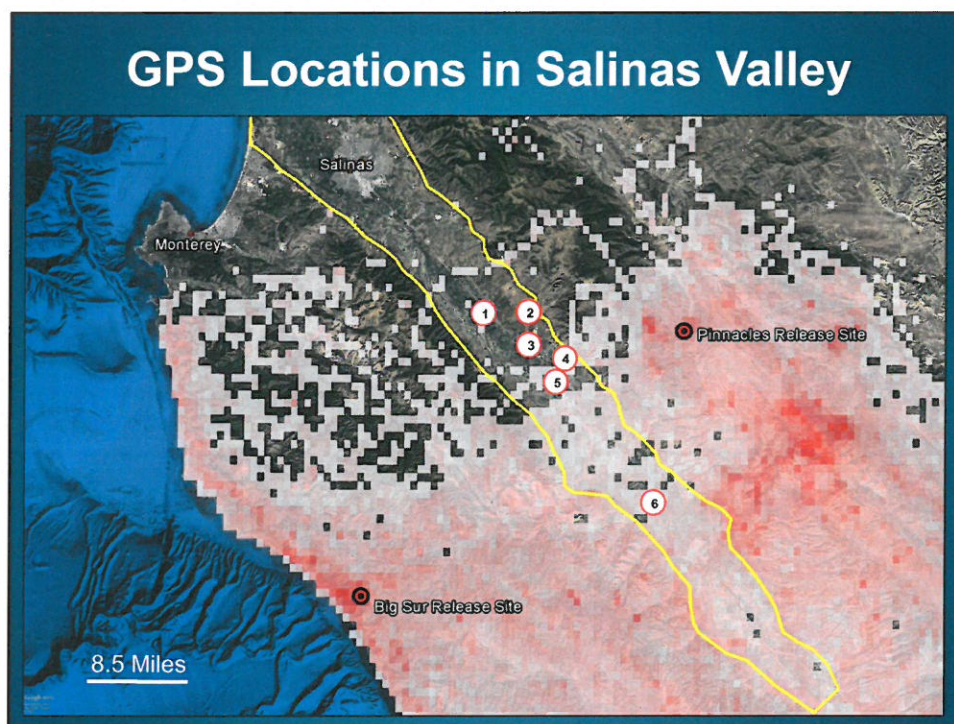
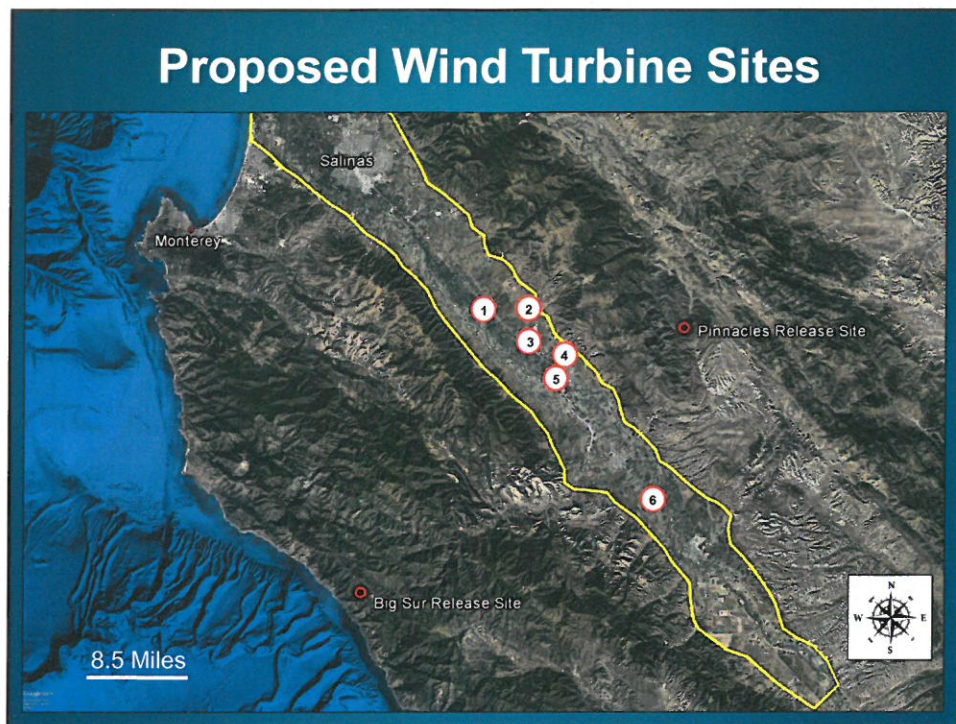
-Ventana Wildlife Society and Stanford University Solar and Wind Energy Project, 2009

Much More Information Since 2009

	2009	2017
Population Size	About 50	86
Data Records	132,701	About 2 Million
Transmitter Type	Argos	Argos + GSM

GPS Transmitters

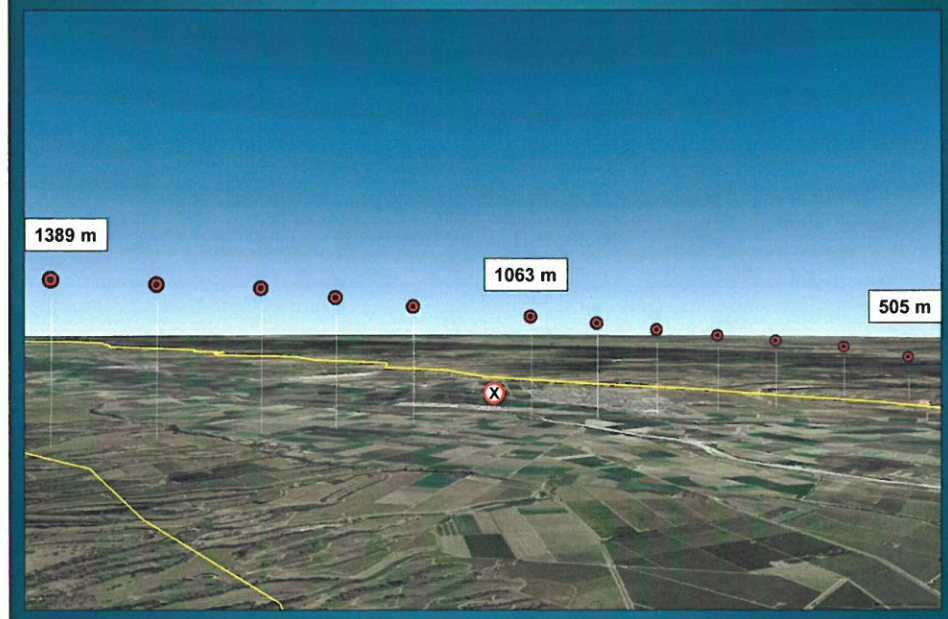




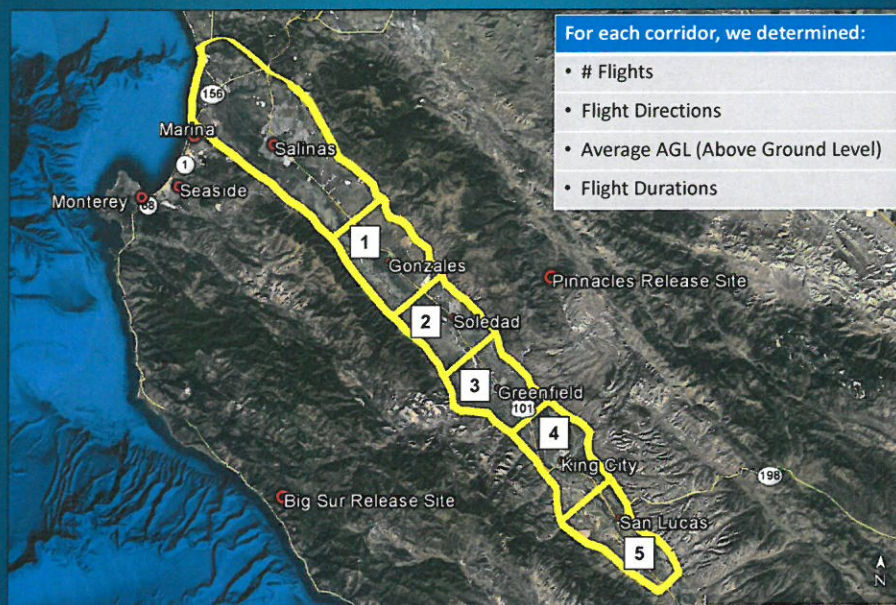
Typical Flight



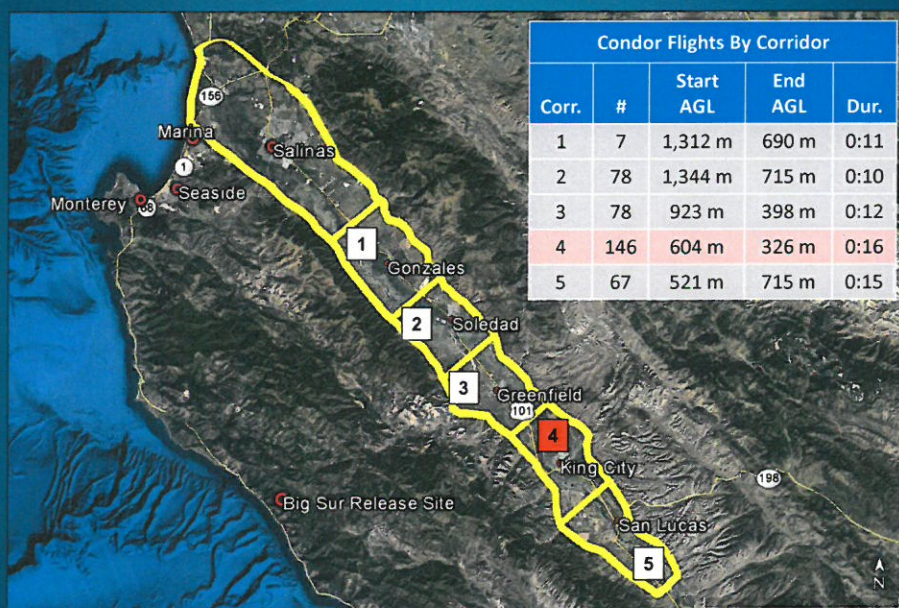
Typical Flight



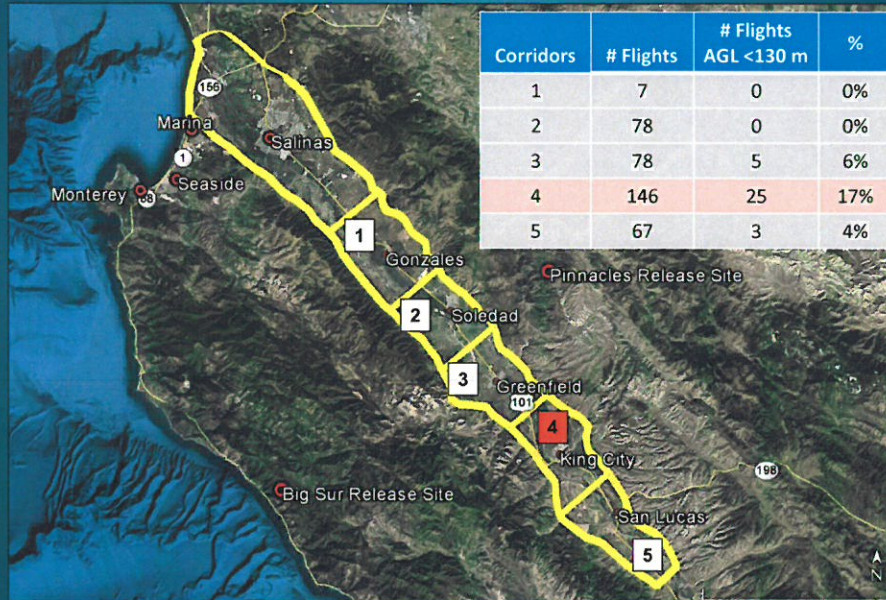
Condor Flight Corridors



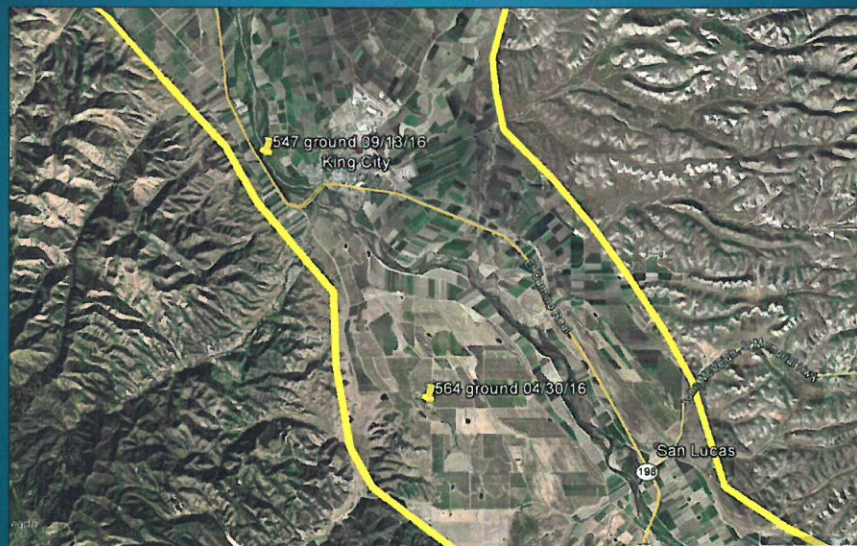
Condor Flight Corridors



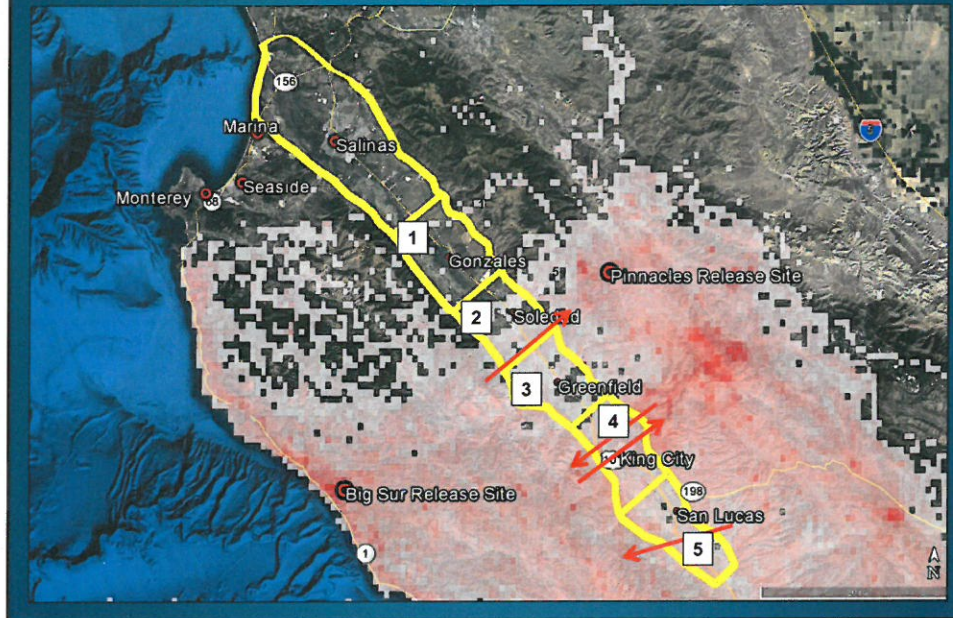
Condor Flight Corridors



Could Condors Land in the Valley?



Current Wind Turbine Sites



Conclusions



- Flights generally higher than turbine height
- Flights more numerous and lower in southern portion of valley (King City)
- Edges and foothills are of concern

