



# New Inclusive, Accessible Playground at Toro County Park:

Design Concept and Renderings

Presented by:

The Tatum's Garden Foundation







## **The Tatum's Garden Foundation is pleased to update you on the following progress we've made:**

---

-Earlier this Spring, we began some preliminary work to gather information on our site at Quail Meadows. We had all of our utilities located and marked, found and evaluated the existing septic system, and have completed a full site survey. We are planning for our soils drilling and reports to be completed by the end of June.

-From May 16-19, we completed our Community Design Days, visiting with students in local schools across Monterey County. The Design Team from Leathers and Associates ran these brainstorming sessions, and compiled their input, along with over 1500 hand-drawn pictures submitted from children all over the county.

-This invaluable community-driven input guided the design team towards our initial Preliminary Design, which was revealed privately to our Board on Friday, May 19<sup>th</sup>. Since that time, we have worked closely with the team at Leathers to hone and refine that Preliminary Design, in order to present our Design Concept and Renderings to the County of Monterey.

# Our Objective:

---

- We seek approval of the proposed Concept, so that we can move forward with our fundraising efforts, alongside necessary engineering, site planning and final Design and Working Drawings, in conjunction with the Staff of Monterey County Parks Department, and feedback from the Board of Supervisors and Parks Commission, ultimately resulting in applying for needed building permits and the goal of building the playground in the summer of 2018.



**The following presentation includes our proposed plan for renovating the Quail Meadows area in Toro County Park:**

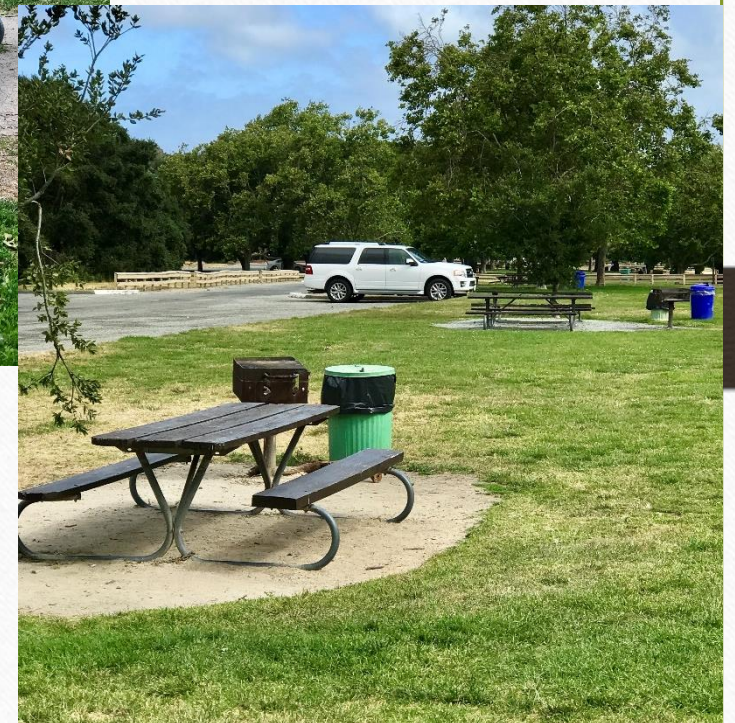
---

- Overview of proposed improvements to the Quail Meadows use area
- Schematic Design Concept and Rendering of the new inclusive and accessible playground
- Pictures and brief descriptions of some of the specific prefabricated components within the Rendering





Road to Quail Meadows to be repaved.



Small BBQ/picnic areas along access road to be renovated, including wheelchair accessible picnic tables, and accessible paths connecting to the parking lot, restrooms and use area.





Parking lot to be resurfaced and restriped, with additional handicap parking spaces



Restrooms to be renovated for added accessibility, with new fixtures, and a changing station for children of all ages and abilities.





Picnic Areas near the BBQ, which may be reserved by groups. Picnic tables will be refurbished and/or replaced, including adding some wheelchair accessible tables. The current ground surface here will be replaced with permeable paving bricks, for added accessibility, bringing the surface level and flush with BBQ area.



Also included in our proposed plan is to create an accessible walking path surrounding the playground and use area, beginning near the restroom building, staying within the existing fence which borders the road, and circling the playground near the picnic area.



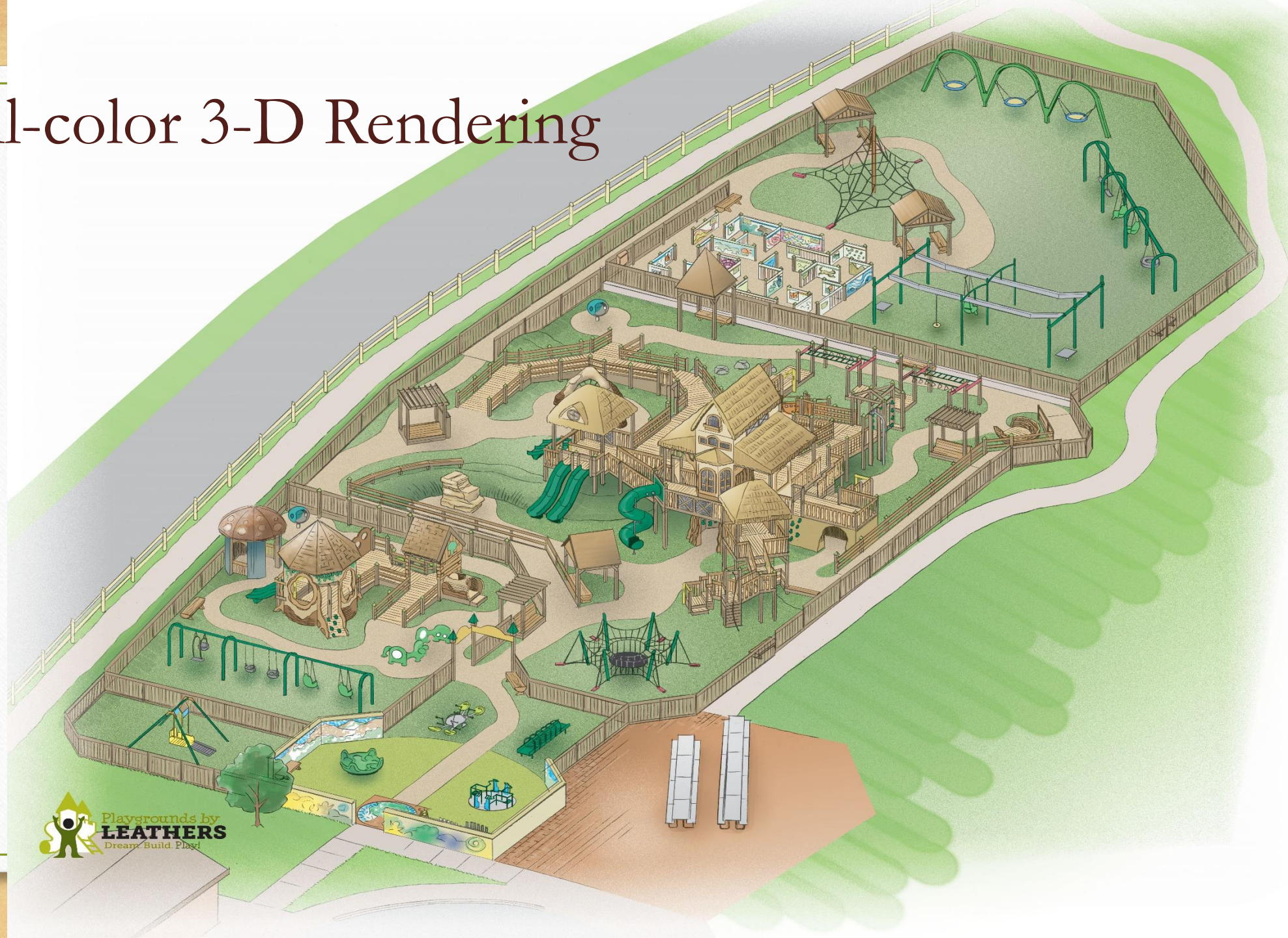




For your reference, in the above Google Earth image, we have sketched a rough outline of the space within Quail Meadows that will be utilized for the footprint of the new inclusive playground.



# Full-color 3-D Rendering







Proposed Name of the new playground: "Tatum's Treehouse" seen with new logo



# Concept Rendering with Numbered Bullets



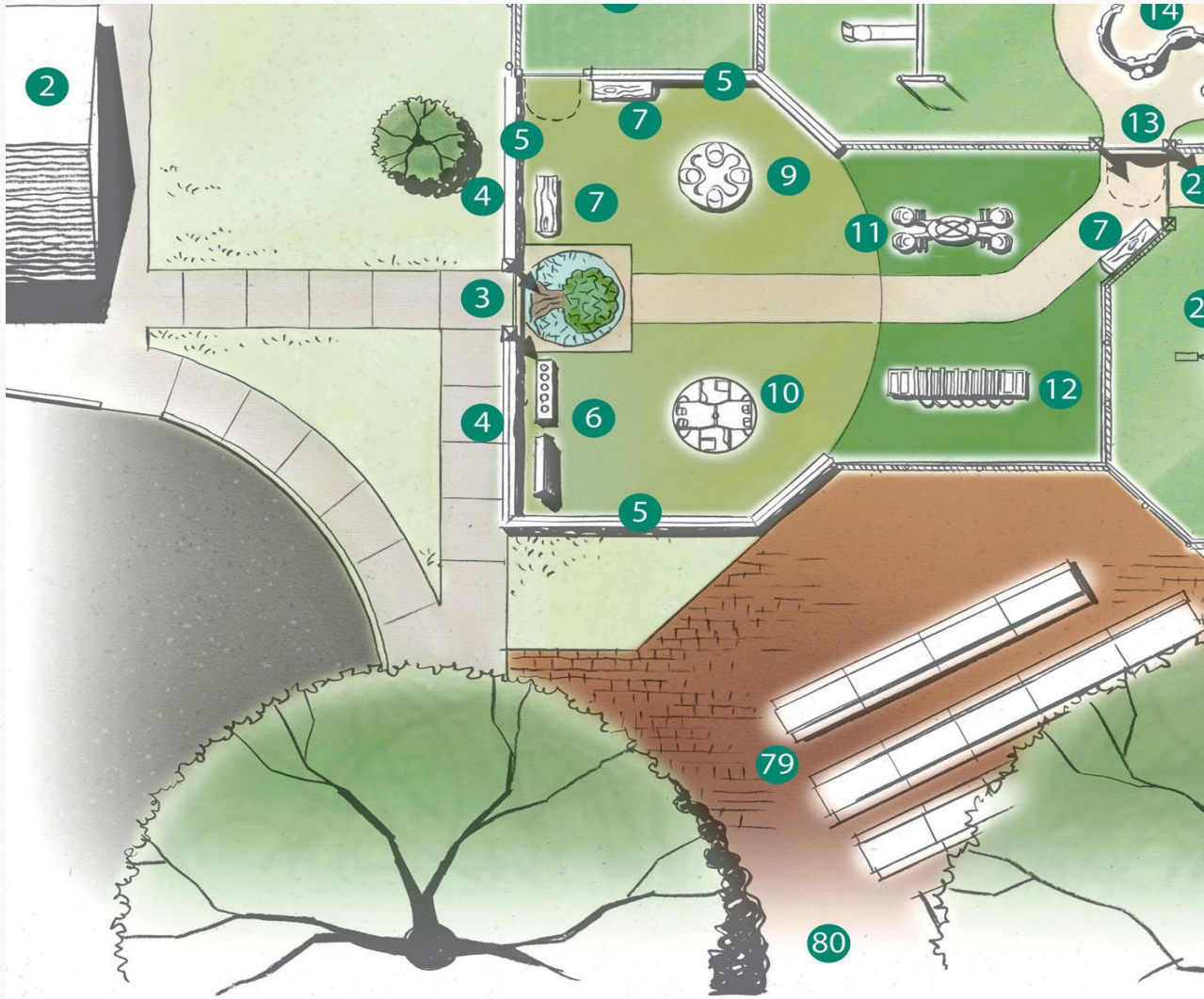
Estimated Square Footage  
within playground perimeter:  
26,200 sq ft.



# Bullet Key:

- |                                |                                 |                               |
|--------------------------------|---------------------------------|-------------------------------|
| 1 WALKING PATH                 | 29 SPIDER BOUNCER               | 57 ROCK WALL                  |
| 2 RENOVATED BATHROOMS          | 30 COVERED SEATING AREA         | 58 LADDER                     |
| 3 MAIN ENTRY                   | 31 ROPE CLIMB                   | 59 CHALLENGE BRIDGE           |
| 4 MURAL WALLS                  | 32 TREEHOUSE STEPS              | 60 ROCK STEPPERS              |
| 5 MOSAIC WALLS                 | 33 PHONE                        | 61 HIGH MONKEY BARS           |
| 6 MUSIC AREA                   | 34 TREEHOUSE WEST               | 62 LOW RINGS                  |
| 7 LOG BENCHES                  | 35 SWINGING BRIDGE              | 63 FLIP BAR                   |
| 8 LIBERTY SWING                | 36 BENCHES                      | 64 LOG BALANCE                |
| 9 OMNI SPINNER                 | 37 BEAR CAVE                    | 65 HIGH RINGS                 |
| 10 ABILITY WHIRL               | 38 ARCHED ROCK CLIMBER          | 66 LOW MONKEY BARS            |
| 11 WE-SAW                      | 39 TREETRUNK TUNNEL             | 67 BIRD'S NEST QUIET SPACE    |
| 12 ROLLER TABLE                | 40 TREEHOUSE LOFT               | 68 ACCESSIBLE RACING ZIP LINE |
| 13 TOT AREA ENTRY              | 41 MAIN TREEHOUSE W/BIRD SOUNDS | 69 SENSORY MAZE               |
| 14 SENSORY PANELS              | 42 TREETRUNK CLIMBER            | 70 ANIMAL SOUNDS PANEL        |
| 15 THERAPEUTIC SWINGS          | 43 GIANT TWISTY SLIDE           | 71 SCAVENGER HUNT SHEETS      |
| 16 TOT SWINGS                  | 44 ACCESSIBLE GROUNDS ROUTES    | 72 SPACE NET                  |
| 17 EXPRESSION SWING            | 45 FIRE POLE                    | 73 TRIPLE DISC SWINGS         |
| 18 TREE ROOT CLIMBER           | 46 CLIMBINATOR                  | 74 SWINGS                     |
| 19 WOODLAND GNOME HOME         | 47 ACCESSIBLE CLIMBER           | 75 THERAPEUTIC SWINGS         |
| 20 TOT SLIDE                   | 48 TREE STEPPERS                | 76 TIRE SWING                 |
| 21 MUSHROOM PLAYHOUSE          | 49 RAIN WHEEL                   | 77 ROCK GARDEN/NATURE AREA    |
| 22 COZY COCCOON                | 50 TREEHOUSE EAST               | 78 BERM                       |
| 23 ANIMAL'S FACE WALL W/SOUNDS | 51 HIGH RACING SLIDES           | 79 RENOVATED PICNIC AREA      |
| 24 MUSHROOM STEPPERS           | 52 CLIMBING ROCK                | 80 ROUTE TO BRIDGE            |
| 25 LOG CABIN                   | 53 LOW RACING SLIDES            |                               |
| 26 LOG TUNNEL                  | 54 COBWEB HOLLOW ROCK           |                               |
| 27 5-12 AREA ENTRY             | 55 ANIMAL FACE WALL             |                               |
| 28 TRELLISED SEATING           | 56 ANIMAL TRACK FINDER          |                               |





A closer look  
at the  
Entrance Area



## The components you will find in the Main Entrance Area:



Omni Spinner (9)\* -  
seated merry-go-round



We-Saw (11)\* –  
4-seated see saw



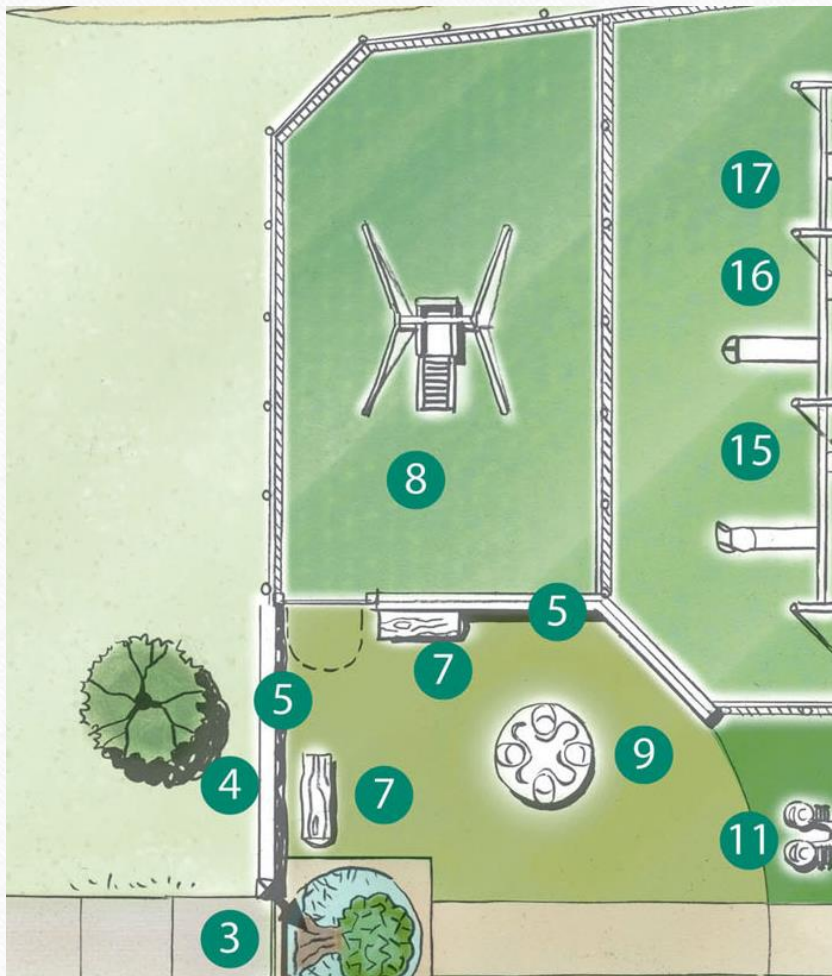
Ability Whirl (10)\* –  
ground-flush wheelchair accessible merry-go-round



Roller Table (12) –  
child uses upper body to pull across rolling bars

\*Note: components shown are examples only, colors will vary.





Just off the Main Entrance Area:

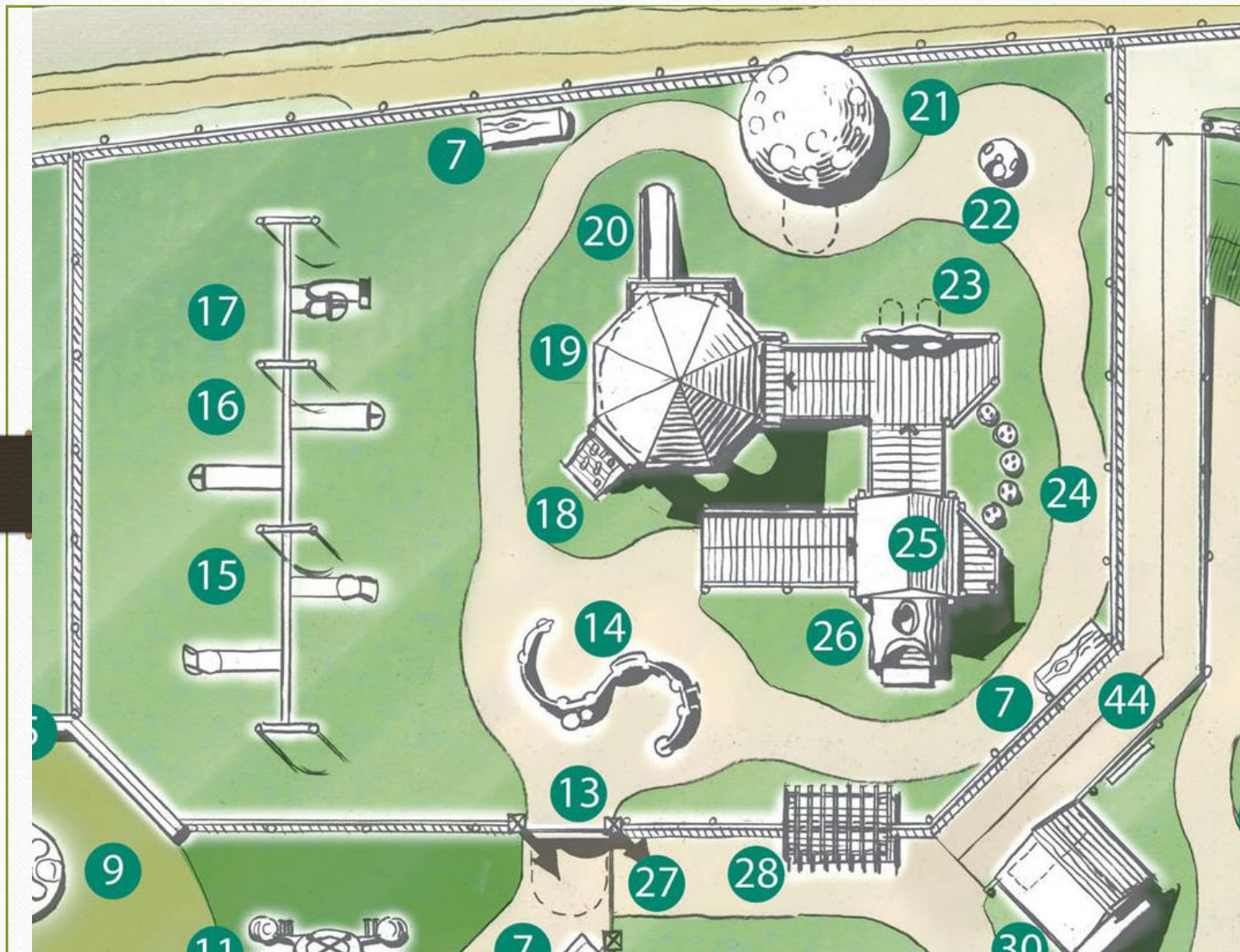
Liberty Swing – (8)\*

Wheelchair Accessible  
Swing System



\*Note: components shown are examples only, colors will vary.





A closer look  
at the  
“Tot” Area  
(designed for  
ages 0-5)



## Some of the components you will find in the “Tot Lot”:



Sensory Panels (13) -  
toddler play panels for all 5 senses



Tot and Therapeutic Swings (15 & 16)\* -  
swings for toddlers of all abilities



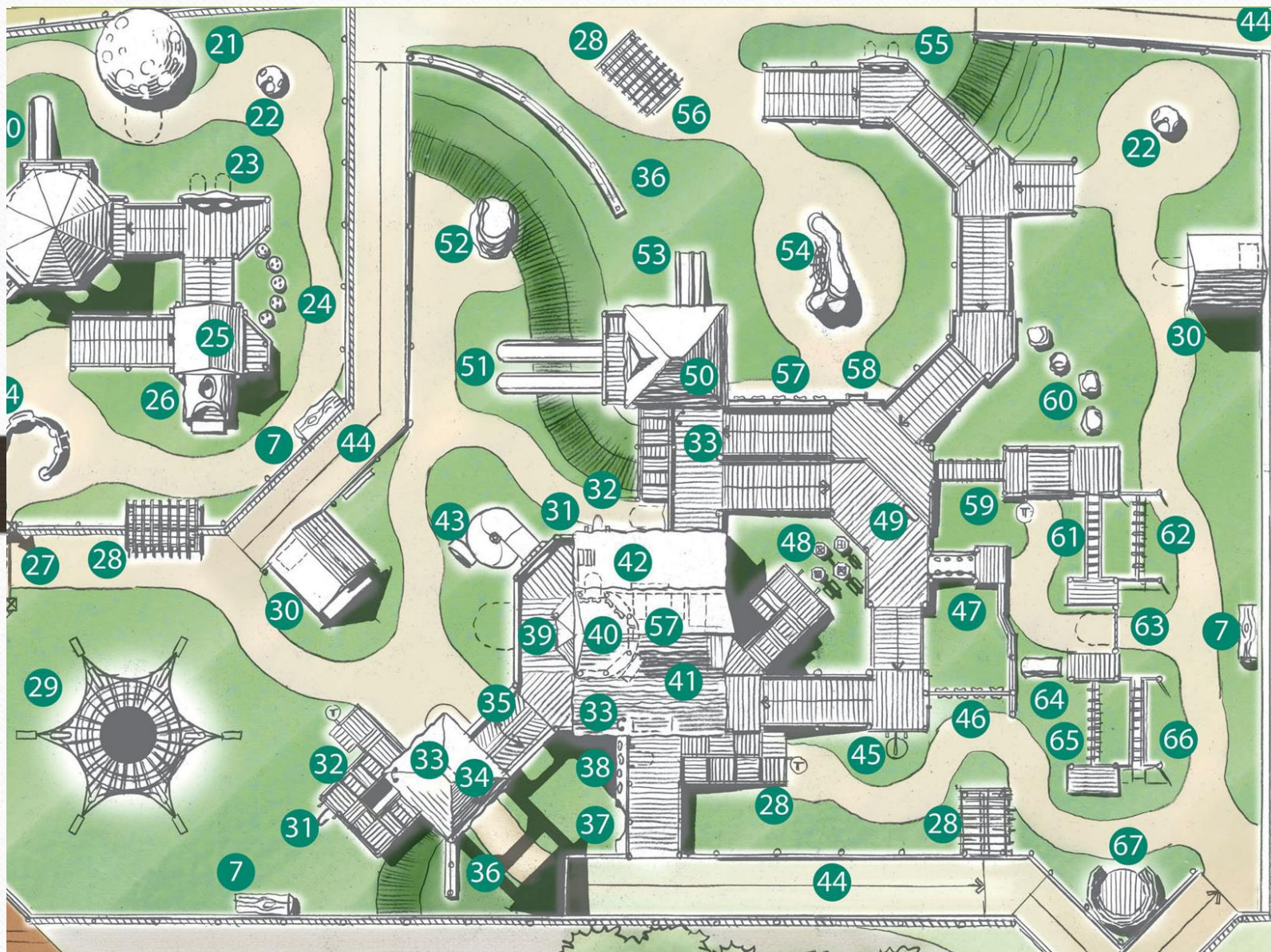
Expression Swing (17) –  
Companion swing for toddler and adult



Cozy Cocoon (22) –  
specialty swing/quiet space, comforting to children with  
autism spectrum disorder

\*Note: components shown are examples only, colors will vary.

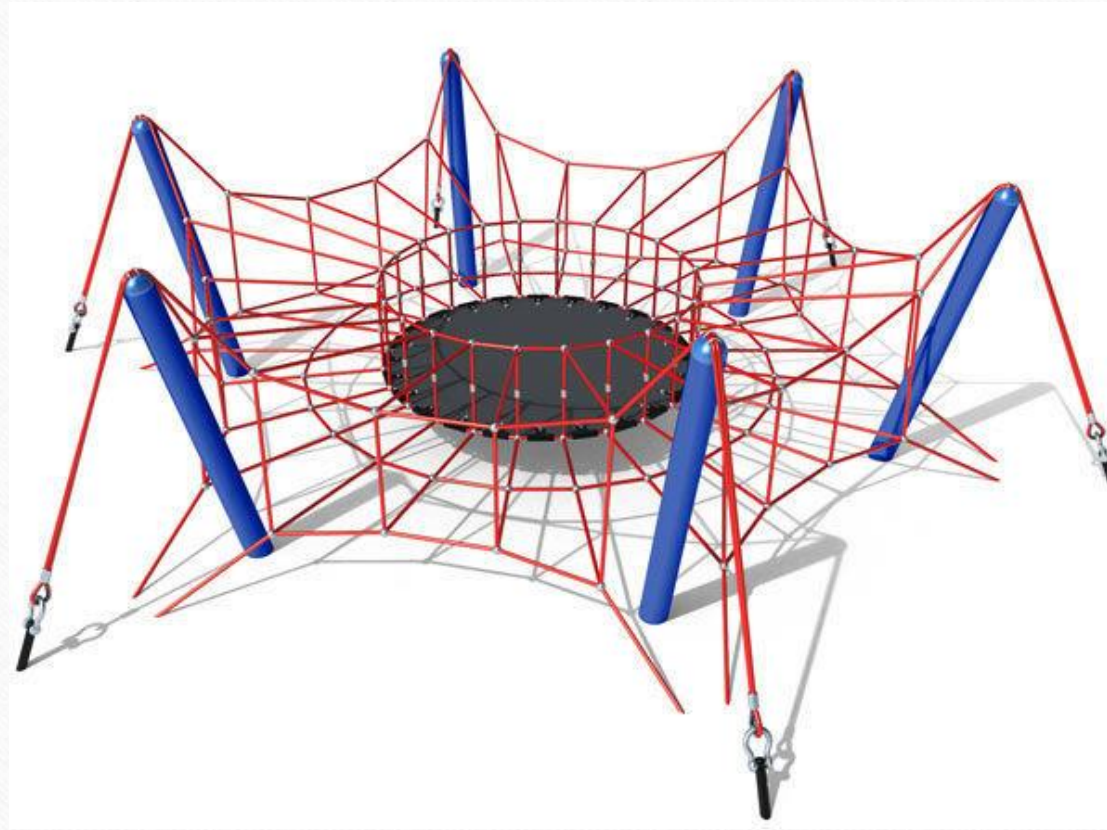




A closer look  
at the  
“Big Kid” Area  
(designed for  
ages 5-12)



## Some of the components you will find in the “Big Kid Area”:



Spider Bouncer (29)\* -  
Climbing system with rigid bouncer in center

\*Note: components shown are examples only, colors will vary.



## Some of the components you will find in the “Big Kid Area”:

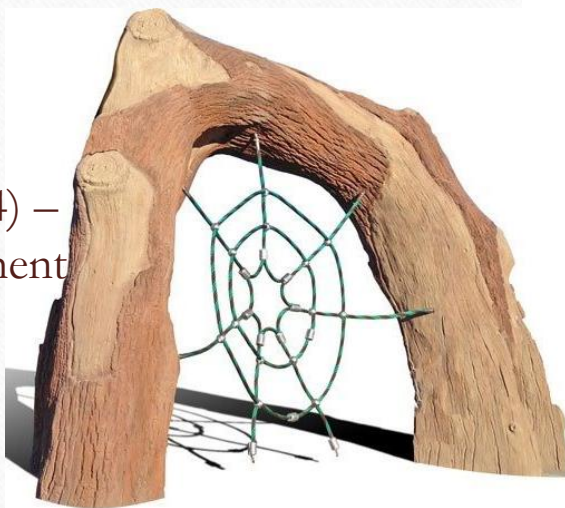


Climbinator (46) –  
suspended vertical  
climbing element



Accessible “Drag Race” Climber (47)\* -  
challenging upward climb with ropes  
and handholds, with smooth center  
surface for legs/torso to drag if needed.  
Wheelchair transfer stations  
at bottom and top.

Cobweb Hollow Rock (54) –  
web-shaped climbing element  
inside faux rock base



Cozy Cocoon (22) –  
specialty swing/quiet space, comforting to children with  
autism spectrum disorder

\*Note: components shown are examples only, colors will vary.







## Some of the components you will find in the Rear “Big Kid” Area:



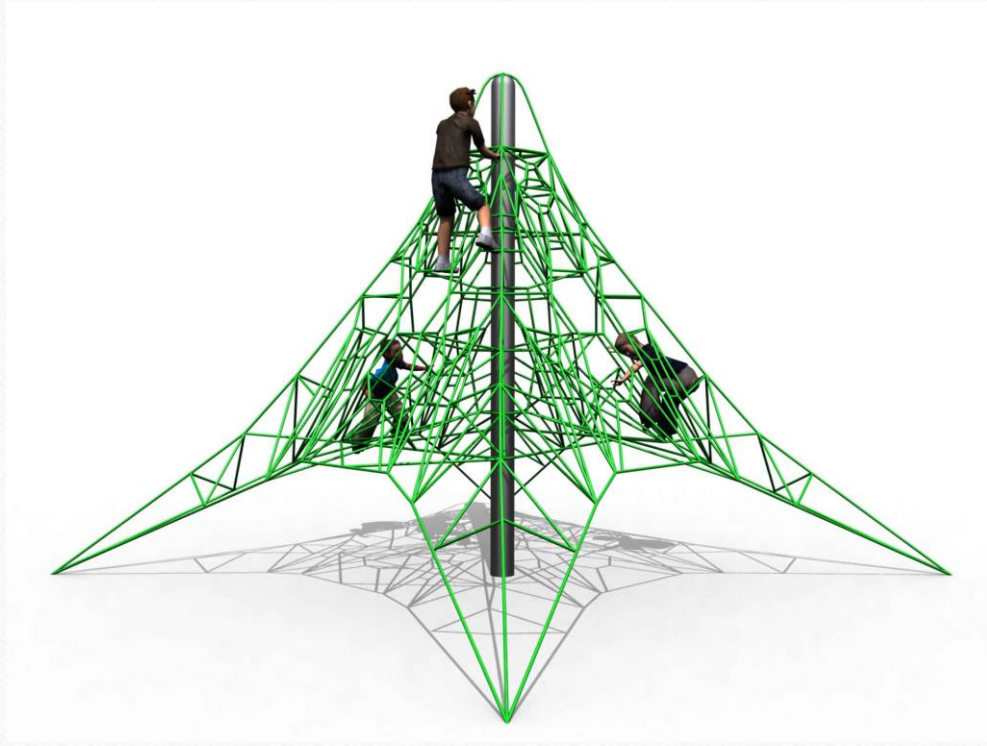
Accessible Racing Zipline (68)\* - one lane has a secure, accessible seat, while the other has a disc seat.

Loading/transfer platforms are at both ends, and children can race side by side.

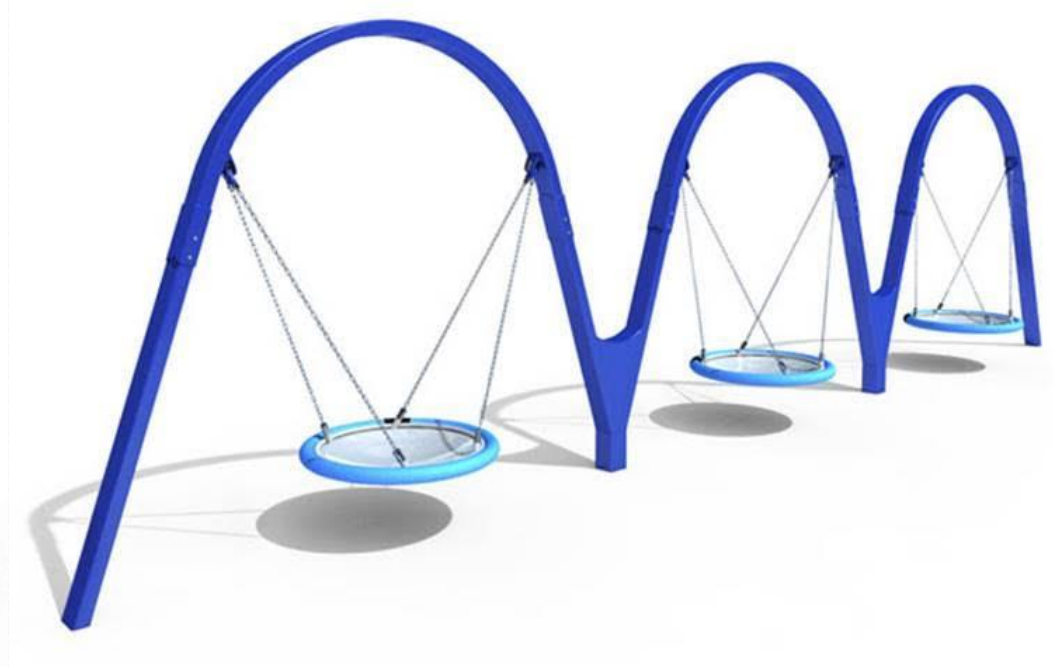
\*Note: components shown are examples only, colors will vary.



## Some of the components you will find in the Rear “Big Kid” Area:



Space Net (72) –  
large, pyramid-shaped climber



Triple Disk Swings (73)\* -  
Three large disk-shaped swings for  
sitting or laying down

\*Note: components shown are examples only, colors will vary.



## “Woodland, Nature-Inspired Theme”

As you can see in our concept drawings, there are also numerous components that are not pre-fabricated—they will be constructed on-site by staff and volunteers, such as several “treehouses”, playhouses, tunnels, caves, etc.

We will maintain a “woodland, nature-inspired” theme in all areas, and in our color schemes.

These are a few visual examples of other nature-inspired structures Leathers has designed in other playgrounds.



Custom-built with highly-durable structural and composite recycled plastic (more than 95% recycled).



## More nature-inspired elements...



All components, whether pre-fab, or custom built, will adhere to the highest levels of National Safety Standards.



- ASTM (American Society for Testing and Materials) & CPSC (Consumer Product Safety Commission) standards
- NPSI (National Playground Safety Institute) – Nationally certified
- Meets and exceeds ADA





These two images show you the “picket fence” which surrounds Tatum’s Garden, and will also be at the new Toro playground, as shown in our Concept Drawings. It is made of highly durable, recycled plastic lumber. It serves several purposes. First, it contains children for safety, so there is only one entry/exit point for the entire playground. It also divides the “Tot Lot” from the “Big Kid” areas of the playground, for added safety. Finally, each of these hundreds of fence pickets was sponsored for \$50, and contributed thousands of dollars to our fundraising campaign, and now will forever remain as a thank you to those generous donors. (Note, pickets can be engraved and filled with white or black lettering, or engraved and left “natural” with no fill.)



## **Conclusion and Next Steps:**

In conclusion, The Tatum's Garden Foundation asks for approval of this Proposed Design Concept, so that we can move forward with our Community-Driven efforts.

Upon approval this summer, TGF will be able to launch Community and Capital Fundraising Campaigns, including a combination of community events, grant writing, and seeking public and private sponsorship of “components” within the footprint of the playground, such as brick pavers, fence pickets, and playground structures, etc. We intend to follow these same proven, successful strategies for fundraising for the new playground in Toro County Park.







