

AMENDMENT #3 TO AGREEMENT

AMENDMENT #3 TO PROFESSIONAL SERVICES AGREEMENT COUNTY OF MONTEREY & AND PRISONER TRANSPORT SERVICES OF AMERICA, LLC

THIS AMENDMENT is made to the AGREEMENT for transportation of extradited prisoners by and between PRISONER TRANSPORT SERVICES OF AMERICA, LLC, hereinafter "CONTRACTOR", and the County of Monterey, a political subdivision of the State of California, hereinafter referred to as "County".

WHEREAS, the County and CONTRACTOR entered into the AGREEMENT on July 1st, 2014 and subsequently amended the AGREEMENT with Amendment #1 on July 28, 2015 and with Amendment #2 on December 2, 2016; and

WHEREAS, the County and CONTRACTOR wish to further amend the AGREEMENT to extend its length, update Exhibits and to increase the total amount of the AGREEMENT due to the addition of time and pricing changes to the contract.

NOW THEREFORE, the County and CONTRACTOR hereby agree to amend the AGREEMENT in the following manner:

1. Section 2., "PAYMENT PROVISIONS" shall be amended by removing, *"The total amount payable by County to CONTRACTOR under this Agreement shall not exceed the sum of \$99,000."* and replacing it with *"The total amount payable by County to CONTRACTOR under this AGREEMENT shall not exceed the sum of \$151,000."*
2. Section 3., "TERM OF AGREEMENT" shall be amended by removing, *"The term of the AGREEMENT is from July 1, 2014 to June 30, 2018"* and replacing it with, *"The term of the AGREEMENT is from July 1, 2014 to June 30, 2019"*.
3. EXHIBIT A – Scope of Services shall be amended by updating service delivery information as per EXHIBIT A3 Revised per Amendment #3 attached hereto.
4. Except as provided herein, all remaining terms, conditions and provisions of the AGREEMENT are unchanged and unaffected by this AMENDMENT and shall continue in full force and effect as set forth in the AGREEMENT.
5. A copy of the AMENDMENT shall be attached to the original AGREEMENT executed by the County on July 1, 2014.

AMENDMENT #3 TO AGREEMENT

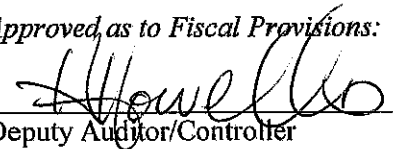
IN WITNESS WHEREOF, the parties have executed this AMENDMENT on the day and year written below.

MONTEREY COUNTY

Contracts/Purchasing Officer

Dated: _____

Approved as to Fiscal Provisions:



Deputy Auditor/Controller

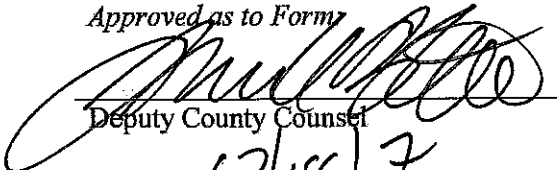
Dated: 12/18/17

Approved as to Liability Provisions:

Risk Management

Dated: _____

Approved as to Form:



Deputy County Counsel

Dated: 12/18/17

CONTRACTOR

By: 

Signature of Chair, President, or
Vice-President

Joel Brasfield

Printed Name and Title

Dated: 10/30/2017

By: 

(Signature of Secretary, Asst. Secretary, CFO,
Treasurer or Asst. Treasurer) *

Tanisha Cheek

Printed Name and Title

Dated: 10/30/17

*INSTRUCTIONS: If CONTRACTOR is a corporation, including limited liability and non-profit corporations, the full legal name of the corporation shall be set forth above together with the signatures of two specified officers. If CONTRACTOR is a partnership, the name of the partnership shall be set forth above together with the signature of a partner who has authority to execute this Agreement on behalf of the partnership. If CONTRACTOR is contracting in an individual capacity, the individual shall set forth the name of the business, if any, and shall personally sign the Agreement.

Prisoner Transport Services of America, LLC

Amount: \$151,000.00

Term: 07/01/2014 to 06/30/2019

EXHIBIT-A-3

EXHIBIT-A-3

To Agreement by and between
Monterey County Sheriff's Office, hereinafter referred to as "County"
AND
Prisoner Transport of America, LLC, hereinafter referred to as "CONTRACTOR"

Scope of Services / Payment Provisions

A. SCOPE OF SERVICES

- A.1 CONTRACTOR shall provide services and staff, and otherwise do all things necessary for or incidental to the performance of work, as set forth below:

Transport of extradited prisoners, as per detailed scope of work and prisoner transport procedures attached. Procedures have been reviewed and agreed to by the Monterey County Sheriff's Office, Transportation Unit.

- A.2 CONTRACTOR shall produce the following deliverables, as indicated below:

Completed and executed Oath of Office paperwork
All items as outlined under Compensation/Payment

B. PAYMENT PROVISIONS

B.1 COMPENSATION/ PAYMENT

County shall pay an amount not to exceed \$151,000.00 for the performance of all things necessary for or incidental to the performance of work as set forth in the Scope of Work. CONTRACTOR'S compensation for services rendered shall be based on the following rates or in accordance with the following terms:

All cases must have pricing quote submitted to the Monterey County Sheriff's Office Transportation Unit for approval prior to pick up.

EXHIBIT-A-3

PRISONER TRANSPORTATION PER MILE FEES:

| | |
|-----------------------------|----------------------------|
| Males | \$1.50 per mile |
| Females | \$1.50 per mile |
| Minimum Price per Transport | \$800.00 |
| Special Needs Prisoners | Quoted on a per case basis |

Above rates subject to a 25% discount for more than one prisoner per pick-up/drop off at the same location at the same time (out of state transports).

Limited Service Areas: Are priced on a case by case basis. Limited Service Areas are the states of Idaho, Montana, North Dakota, South Dakota, Oregon, Washington and Wyoming.

ALL TAXABLE ITEMS SHOULD BE CLEARLY IDENTIFIED. It is preferable to state the tax rate applied in parenthesis and all taxes should be listed as a separate line item.

There shall be no travel reimbursement, other than Per Mile rate above, allowed during this Agreement.

CONTRACTOR warrants that the cost charged for services under the terms of this contract are not greater than those charged any other client for the same services performed by the same individuals.

B.2 CONTRACTORS BILLING PROCEDURES

Invoicing shall occur monthly. It is preferable to submit invoices and statements electronically to the County's invoice tracking system at:

MCSOSheriff.Fiscal@co.monterey.ca.us

If CONTRACTOR lacks the ability to use this system, hard copy invoices will be accepted via mail addressed to the following location:

Monterey County Sheriff/Coroner's Office
Attention: Fiscal Unit Accounts Payable
1414 Natividad Road
Salinas, CA 93906

EXHIBIT-A-3

All invoices shall list the following:

- Date and time of Pick up, and location prisoner picked up at
- Date and time delivered, and location delivered to
- Miles Traveled
- Method of transport
- Name of Prisoner, Date of Birth
- Must provide Oath of Office to Transportation Unit to allow for 3rd party billing

County may, in its sole discretion, terminate the contract or withhold payments claimed by CONTRACTOR for services rendered if CONTRACTOR fails to satisfactorily comply with any term or condition of this Agreement.

No payments in advance or in anticipation of services or supplies to be provided under this Agreement shall be made by County.

County shall not pay any claims for payment for services submitted more than twelve (12) months after the calendar month in which the services were completed.

DISALLOWED COSTS: CONTRACTOR is responsible for any audit exceptions or disallowed costs incurred by its own organization or that of its subcontractors.

Prisoner Transport of America, LLC

Amount: \$151,000.00

Term: 07/01/2014 to 06/30/2019

Page 3

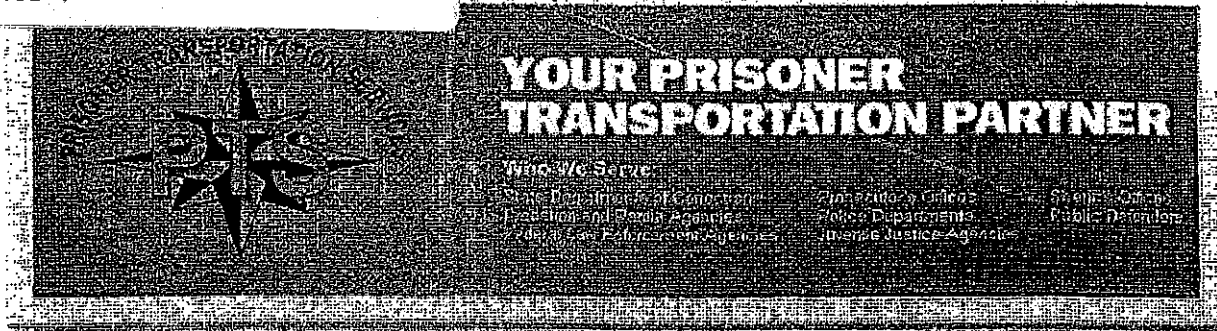


Exhibit A3

Prisoner Transportation Services of America Overview

PTS of America's goal is to provide safe, secure and reliable prisoner transportation services. From the comprehensive training we provide our agents to the meticulous attention we give to the maintenance of our vehicles, PTS makes every effort to reach this goal. We continue to refine our operations, vehicle fleet configuration and training programs to ensure we remain not just the largest prisoner transportation company in the U.S, but also the best in quality and reputation.

About the Company

PTS of America is the largest provider of prisoner transportation and extradition services in the U.S. PTS is headquartered in Nashville, TN and was founded in 2001. Over the past thirteen years, PTS has transported over 250,000 detainees at all security levels. PTS currently services 22 of the 25 DOCs that outsource their extraditions. We also service 47.5% of the entire population of the United States. PTS has experience in transporting males and females, adults and juveniles, by both ground and commercial aircraft.

PTS employs more than 80 transportation personnel, including specially trained extradition agents, logistics professionals, mechanics, training staff and trip planners. Operating a fleet of over 30 specially-modified and equipped vehicles, PTS uses a nationwide ground network to move prisoners from coast to coast.

PTS handles all types of extraditions, including court appearances, Form VI and Governor's Warrants. We transport adults and juvenile offenders of all classifications, including high-risk security moves, special needs medical transports, and mass moves.

Prices for ground transportation services provided by PTS are based on the direct mileage between pick-up and drop-off points. Mileage for moves within the nationwide network is determined by the computer program PC*MILER/STREETS.



PTS transports prisoners nationwide under the authority of the United States Department of Transportation, Federal Motor Carrier Safety Administration (FMCSA) and has received a SATISFACTORY RATING. PTS' USDOT number is 1106950, PTS' MC Number is 689407. PTS complies with all requirements for limits of travel, hours and miles as governed by the Department of Transportation. PTS also complies with all regulations governed by the Interstate of Dangerous Criminal Acts of 2000 (Jenna's Act).

Transportation Equipment

All prisoners are restrained with standard restraining devices to include, double locking handcuffs, waist chains, and double locking leg restraints. Prisoners are interconnected for additional security. PTS agents are also trained in the application of Hobble Restraints for special situations.



PTS agents are completely trained in the use and application of restraints. Agents are also instructed on proper escort procedures. Restraints are utilized immediately upon acceptance of an inmate into PTS' custody. All prisoners remain completely restrained during their transport. Agents are instructed in the proper handling and utilization of the chemical agent, Vexor (Oleoresin/Capsicum Spray), in accordance with PTS policy.

Documentation

When PTS Agents take custody of an inmate a Prisoner Status Form is completed. This form includes demographics, description, medical status, and property inventory. Updated reports of medications distributed, meals, restroom breaks and housing status are also recorded on this form.



Property

Prisoner property will be transported with the prisoner and delivered to the destination point. Property is logged on the Prisoner Status Form and it is signed by the prisoner at time of pick up and drop off. Property no larger than 12 x 12 is accepted. Electronic equipment such as televisions, radios, cell phones, etc., will not be transported with inmate.

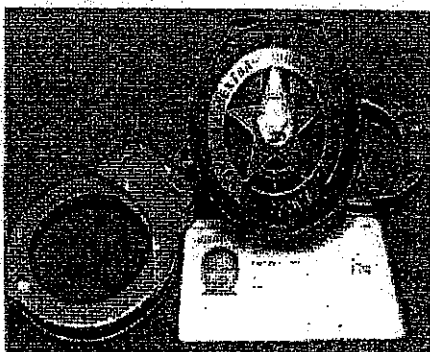
Meals, Housing, Restroom Breaks

As mandated by the American Correctional Association Standard 4-44328, prisoners are provided three nutritionally adequate meals each day during transport. Each meal is consumed in the vehicle. All efforts are made to insure meals meet dietary needs and / or religious preference. PTS agents record each meal provided on the Prisoner Status Form.

The periodic housing of inmates while in transit is part of our nationwide, ground network. Prisoners are housed in a secure detention facility and are provided a bed, shower and meals during the time they are in the facility.

Restroom breaks are taken at secure locations, mainly local jails. Restroom breaks are also provided at locations where PTS agents are picking up or dropping off prisoners.

Employee Uniforms and Identification



All PTS employees involved in the transport of prisoners are required by PTS policy to wear company-issued uniforms bearing the company logo and to carry identification that includes company name, employee name, photograph, and signature. This identification must be displayed properly when requested by the law enforcement agency prior to release of an inmate.



Security, Control, and Acceptance

PTS' standard policy and procedure for agent to prisoner ratio is two (2) agents for every one (1) to twelve (12) prisoners. PTS policy requires that every effort be made to transport female inmates with a female agent on board.

PTS shall assume custody of prisoners from authorized agents of the State and shall surrender custody of such prisoners to the law enforcement agency designated by the Department.

In the event of unusual incidents, emergencies, medical or controversial situations, PTS of America's standard policy is to immediately notify appropriate Department personnel. The unusual incident, emergency, or controversial situation may include any act of violence by prisoners or other passengers, any escape or attempted escape, breach of security, any use of excessive force, excessive delay in the transportation of a prisoner, any medical condition, any prisoner requiring medical treatment, mechanical failure, or any refusal of law enforcement agencies to release a prisoner to PTS as authorized or directed by the Department.

PTS reserves the right to refuse to transport any individual whose condition or behavior would be detrimental to the safety of the vehicle or aircraft, or to other passengers. Once this behavior or condition has been deemed dangerous and routine ground transportation has been prohibited, PTS will notify the Department immediately.

Air Transports

PTS maintains a comprehensive nationwide ground network, although we do offer special transport alternatives. These alternatives include dedicated ground transports and transports via commercial air. Transports outside the normal ground system will be discussed with the Department and the decision to utilize air or dedicated ground services will be made with the Department's approval.





Medical Criteria and Emergencies

Medical



PTS reserves the right to refuse to transport prisoners with medical conditions when there is a risk of the medical condition worsening as a result of motor vehicle transport. PTS provides safe and effective methods of travel for inmates with special needs/ medical conditions and communicable diseases. Certain diseases will not allow the inmate to be transported with other inmates and can also pose a problem in housing that inmate throughout their transport. In the event this occurs, the inmate may be transported via commercial air or transported alone in a special needs vehicle. If this is needed, the various options and costs associated with the special move will be discussed with the Department first. These transports may present a greater exposure to medical expenses and other related costs which PTS attempts to minimize as much as possible. These transports are quoted on a case-by-case basis.

Medical conditions which exclude prisoners from PTS ground transport eligibility include, but shall not be limited to the following:

- Cardiovascular problems requiring medication or prescribed procedures
- Diabetics whereby prescribed medication shall be injected and/or refrigerated
- Epilepsy whereby seizure activity is not adequately controlled.
- Pregnancy
- Fractured bones requiring casts/braces designed to immobilize injured areas
- Critical Wounds
- Communicable diseases or any other medical conditions which have the potential to place the prisoner, transport personnel or other passengers at risk

All prisoner medical costs, including but not limited to, the costs of transportation from the location of the on-set of the emergency to the nearest medical facility shall be paid by the Department. PTS shall be authorized to obtain emergency and/or routine medical treatment for prisoners whenever deemed necessary. The circumstances, to include time, location, costs, etc., surrounding such expenditures shall be itemized and reported immediately to the Department in written form.



Employment, Training, and Staff



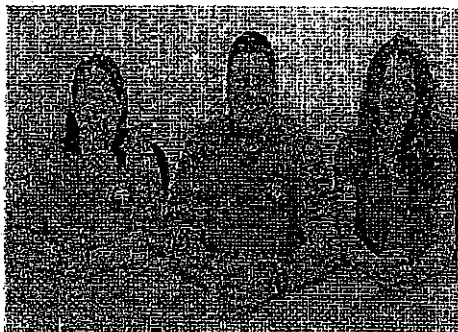
PTS employs more than 80 transportation personnel, including specially trained extradition agents, logistics professionals, mechanics, training staff and trip planners.

All PTS agents are properly trained to lawfully and effectively perform the duties required. Agent candidates must meet established age, education and literacy requirements. Candidates are preferred to have two (2) years previous military, corrections, security or law enforcement experience, and must undergo and pass a comprehensive background check, vehicle records check, fingerprint-based search, credit report check, physical examination, controlled substance test and personal interview. In addition candidates must pass an initial drug test and are subject to random drug screening throughout their employment with PTS.

The primary function of PTS is to transport prisoners in the most safe and secure environment possible. We achieve this by providing a comprehensive training program that includes classroom instruction, as well as extensive hands on application.

Following is an outline of the areas of emphasis covered in the Initial Basic Agent Training:

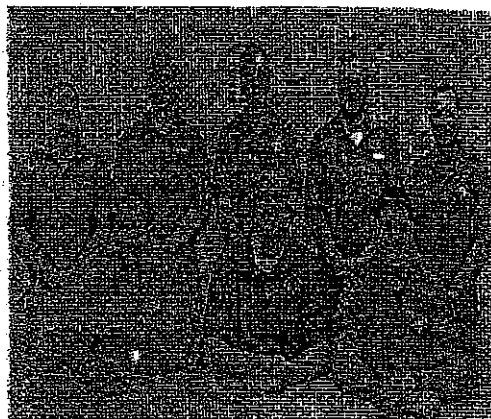
- Proper use and application of restraints
- Search of Prisoners
- Use of Force
- CPR and First Aid
- Driver Safety
- Harassment/EEOC/Sexual Harassment
- Professionalism/Code of Conduct
- Map Reading
- Defensive Driving
- PTS Policy and Procedures
- PREA (Prison Rape Elimination Act)
- Blood/Airborne Pathogens
- Chemical Agents



The Customer Service department is responsible for taking orders and verifying the information received. In addition they commute any issues that may develop with a prisoner, to the customer.

Special Needs staff help communicate and oversee any medical issues that develop while a prisoner is in our network.

Trip Managers provide around the clock oversight and support to PTS agents on the road. They ensure that pick up, housing and destination facilities receive appropriate notice of arrivals and activities. PTS employees are available 24 hours a day, 7 days a week, and 365 days a year to customers with any questions regarding prisoner tracking.



Accounting staff reconcile manifests and accurately bill customers for transport service rendered. Additional office staff supports these functions and the day to day operations of the company.

Transport Vehicles

PTS maintains a fleet of over 20 specially equipped vehicles. All vehicles are in excellent operating condition. PTS meets all DOT requirements for pre- and post-trip inspections.

Each PTS vehicle is fully equipped for each transport trip. All vehicles are equipped with restraints, First Aid kits, CPR shields, fire extinguishers, disposable gloves, emergency roadside triangles, prisoner clothing, and blankets.

Secure transportation is our expertise at PTS. All vehicles are modified to provide the maximum amount of security possible while keeping comfort and safety in mind.



Extra steps we take

- Compartmentalized – Maximum security and safety
- Segregation seats – Added security for females and disruptive prisoners
- Maintained by ASE- Certified mechanics
- Protected Windows – Provide added visibility for agents and comfort for prisoners
- Flame-retardant, foam seats
- Teletrac GPS systems
- Transporters and Buses are equipped with flat screen televisions for inmates



Types of Vehicles

- MCI Buses: 35-Person Capacity
- Transporters: 21-Person Capacity
- Full-Size Vans: 12-Person Capacity
- Mini-Vans: 5 Person Capacity
- Cars: 2-Person Capacity



Each PTS vehicle is custom built in our facility to accommodate our needs. All vehicles are equipped with a dual air conditioning system. Our vans will seat eight (8) inmates in the back and four (4) inmates in the front. In addition, the front has a segregation gate to isolate a disruptive or high-risk inmate. Having separate compartments allows for the transportation of male and female inmates in the same vehicle.

PTS also utilizes Transporters and Buses. The Transporters can carry (15) males, (6) females and (4) agents. The Buses can carry (30) males, (5) females and (5) agents. Both are equipped with a bathroom, two flat screen televisions, iPads, printer/faxes and bunks for the agents to rest while not on duty.





Online Ordering

PTS features a component that brings benefit and convenience to customers. Through our website (www.prisonertransport.net) registered customers can access the online system to get quotes and to place orders. This secure online ordering system is a convenient way for PTS customers to place orders and email different departments throughout PTS.



You have reached a secure area of this website. Please login to continue.

E-mail Address:

Password:

Login

Forgot your password? [Click here to reset it.](#)

Don't have an account? [Click here to register](#)