

# Attachment F

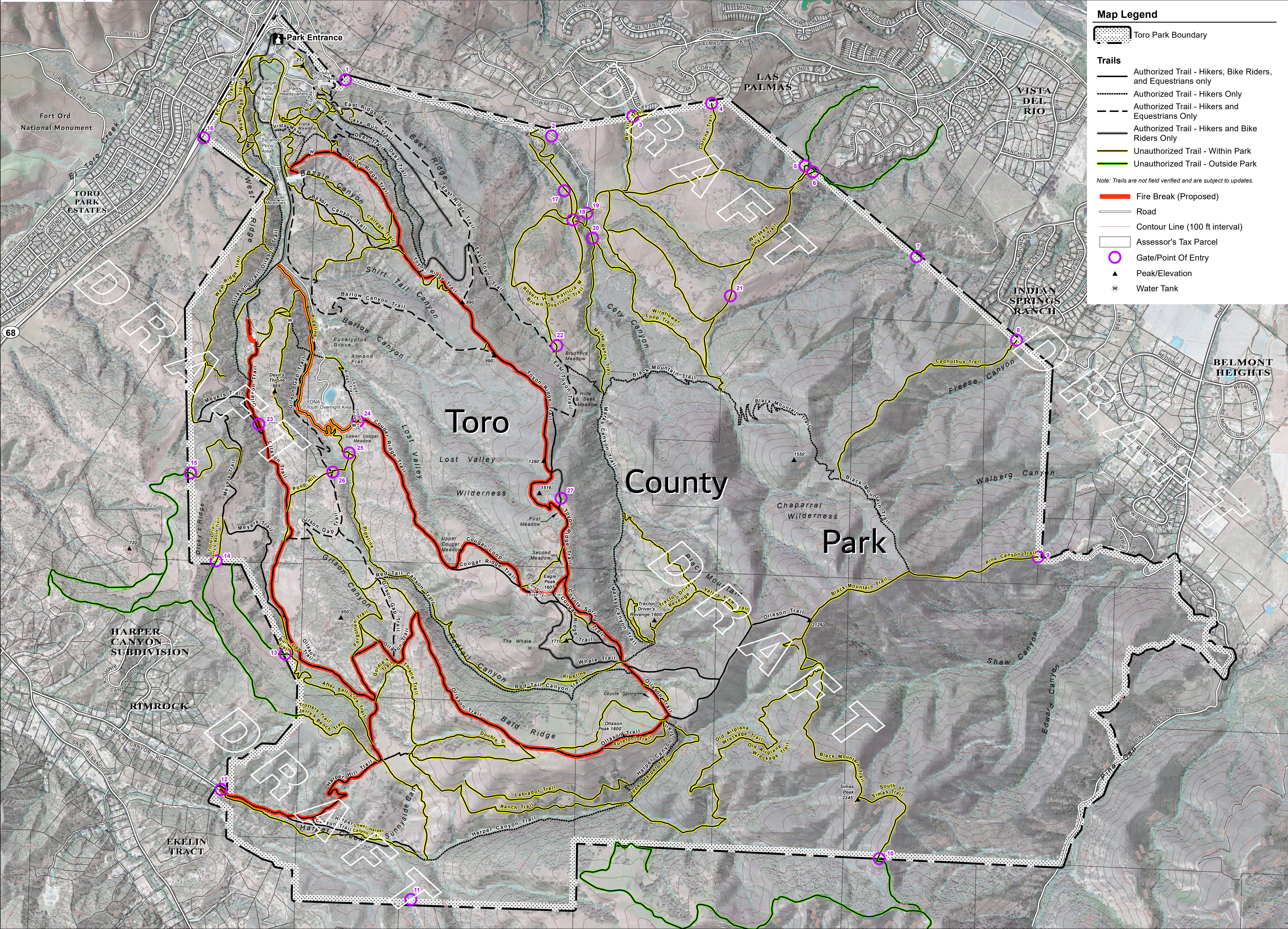
This page intentionally left blank.





# Toro County Park Trails

County of Monterey Resource Management Agency Parks



## Map Legend

- Toro Park Boundary
- Trails**
- Authorized Trail - Hikers, Bike Riders, and Equestrians only
  - Authorized Trail - Hikers Only
  - Authorized Trail - Hikers and Equestrians Only
  - Authorized Trail - Hikers and Bike Riders Only
  - Unauthorized Trail - Within Park
  - Unauthorized Trail - Outside Park
- Fire Break (Proposed)
- Road
- Contour Line (100 ft interval)
- Assessor's Tax Parcel
- Gate/Point Of Entry
- Peak/Elevation
- Water Tank

## Trail Summary

Authorized Trail	Trail Use Type	Length (Miles)
1 Barlow Canyon Trail	Hikers and Equestrians Only	0.88
2 Bessie Canyon Trail	Hikers, Bike Riders, and Equestrians only	0.52
3 Black Mountain Trail	Hikers Only	3.72
4 Cave Run Trail	Hikers and Bike Riders Only	0.68
5 Cougar Loop	Hikers, Bike Riders, and Equestrians only	0.41
6 Cougar Ridge Trail	Hikers, Bike Riders, and Equestrians only	1.98
7 Coyote Spring Trail	Hikers, Bike Riders, and Equestrians only	0.35
8 Deer Trail	Hikers Only	1.31
9 East Ridge Trail	Hikers and Equestrians Only	1.18
10 East Toyon Trail	Hikers and Equestrians Only	0.95
11 Gilson Gap Trail	Hikers and Equestrians Only	1.93
12 Harper Canyon Trail	Hikers Only	1.84
13 Harper Hill Trail	Hikers, Bike Riders, and Equestrians only	0.85
14 Marks Canyon Trail	Hikers Only	1.43
15 Meyers Trail	Hikers, Bike Riders, and Equestrians only	1.58
16 Ollason Trail	Hikers and Bike Riders Only	5.61
17 Red Tail Canyon Trail	Hikers Only	1.26
18 Toyon Ridge Trail	Hikers, Bike Riders, and Equestrians only	2.49
19 Vista Mesa Trail	Hikers Only	0.17
20 Whale Trail	Hikers and Bike Riders Only	0.59
Total Length		29.74

Unauthorized Trail	Inside/ Outside Park	Length (Miles)
1 After Salt Lick Trail	Inside	0.78
2 Black Mountain Trail	Inside	1.36
3 Bovella Trail	Inside	0.37
4 Bull Tree Trail	Inside	0.47
5 Ceonothus Trail	Inside	0.99
6 College Trail	Inside	0.49
7 Cortina Trail	Inside	0.29
8 Double D	Inside	0.39
9 Forgotten Trail	Inside	0.40
10 Goldie's Trail	Inside	0.18
11 Labrador Trail	Inside	0.75
12 Lower Harper Canyon Trail	Inside	0.80
13 Marks Ranch Trail	Inside	0.75
14 Old Airplane Wreckage Trail	Inside	1.69
15 Pine Canyon Trail	Inside	0.51
16 Pipeline	Inside	2.74
17 Poop Hill	Inside	0.37
18 Ranch Trail	Inside	1.03
19 Robert V. & Patricia M. Brown Overlook Trail	Inside	1.43
20 South of Simas Trail	Inside	1.06
21 Surefoot Trail	Inside	0.31
22 Thistle Trail	Inside	0.36
23 Tractor Driver's Revenge	Inside	0.25
24 Trotters Trail Jerry's Bench Trail	Inside	1.35
25 Upper Harper Trail	Inside	0.46
26 Valley View Trail	Inside	0.75
27 West Ridge Trail	Inside	1.62
28 Whiskey Shack Trail	Inside	1.05
29 Wildflower Loop Trail	Inside	0.89
30 XC Run Trail	Inside	0.50
Unnamed Trails	Inside	15.37
31 Bull Tree Trail	Outside	0.47
32 South of Simas Trail	Outside	1.06
33 Swimming Pool Trail	Outside	0.47
34 Trotters Trail Jerry's Bench Trail	Outside	1.35
35 Whiskey Shack Trail	Outside	1.05
Unnamed Trails	Outside	5.25
Total Length		49.40

**DRAFT**  
REVISED 4/23/2018

THIS IS A WORKING DOCUMENT AND IS NOT  
INTENDED FOR PUBLICATION OR PUBLIC USE.



SCALE 1:10 200

Coordinate System: NAD83 State Plane Zone IV Units: Feet

Contour Interval: 100 ft (USGS), Vertical Datum: NAD1988



Map produced by Monterey County Resource Management Agency, 4/23/2018  
Imagery Basemap: 2015 Google orthoimagery, 6 in resolution.

Trail Sources:  
1) Monterey County RMA-Parks (rev 2009) "Toro Park Trails" [map]. 1"=600'.  
2) Monterey County RMA-Parks (2016) "Toro Park Trails" [map].  
3) Scanned maps with comments by Trails Working Group. 1"=1000'.  
4) Childers, S. (1986) "Toro Park Riding & Hiking Guide to the Backcountry Trails" [map]. Scale unknown.  
5) Watson, F. (2016) "A Trail Map of Toro County Park, Monterey County, California, Draft". [map]. Scale Unknown.  
6) Google Earth imagery (1998 - 2018).

Note: The data used in this map is representational only and is not intended for public use, publication, survey, or project planning work. This draft map/data is for Monterey County workshop purposes only. Monterey County makes no warranties as to the validity or accuracy of this map/data, and assumes no liability associated with the use or misuse of this information.



This page intentionally left blank.