

MONTEREY COUNTY
SHERIFF'S OFFICE
BUDGET AUGMENTATION
REQUEST

APRIL 10, 2018

CORE MANDATES (ABRIDGED)

- ENFORCEMENT OPERATIONS
- **26600.** THE SHERIFF **SHALL PRESERVE PEACE**, AND TO ACCOMPLISH THIS OBJECT MAY SPONSOR, SUPERVISE, OR PARTICIPATE IN ANY PROJECT OF **CRIME PREVENTION, REHABILITATION OF PERSONS PREVIOUSLY CONVICTED OF CRIME, OR THE SUPPRESSION OF DELINQUENCY.**
- **26601.** THE SHERIFF **SHALL ARREST** AND TAKE BEFORE THE NEAREST MAGISTRATE FOR EXAMINATION ALL PERSONS WHO ATTEMPT TO COMMIT OR WHO HAVE **COMMITTED A PUBLIC OFFENSE.**
- **26602.** THE SHERIFF **SHALL PREVENT AND SUPPRESS ANY AFFRAYS, BREACHES OF THE PEACE, RIOTS, AND INSURRECTIONS THAT COME TO HIS OR HER KNOWLEDGE, AND INVESTIGATE PUBLIC OFFENSES WHICH HAVE BEEN COMMITTED.** THE SHERIFF MAY EXECUTE ALL ORDERS OF THE LOCAL HEALTH OFFICER ISSUED FOR THE PURPOSE OF PREVENTING THE SPREAD OF ANY CONTAGIOUS OR COMMUNICABLE DISEASE.

ENFORCEMENT OPERATIONS BUREAU CENTRAL STATION

Day Shift

2 Sergeants
12 Deputies

4 working per day

Swing Shift

3 Sgts 17 Deputies

8 per shift
Countywide

Midnights

3 Sgts 16 Deputies

6 per shift M-F, 8 weekend
Countywide

8 Sergeants and 45 Deputies assigned to Central Station, with an average of 4 Deputies working per shift (3 shifts per day) covering 10 patrol beats and 4168 street miles.

ENFORCEMENT OPERATIONS BUREAU COASTAL STATION

Day Shift

**2 Sergeants
7 Deputies**

Swing Shift

**None Assigned
Covered from
Central**

Midnights

**None Assigned
Covered from
Central**

2 Sergeants and 7 Deputies assigned to Coastal Station, with a minimum of 2 Deputies working per shift (1 shifts per day) covering 5 patrol beats and 2885 street miles.

ENFORCEMENT OPERATIONS BUREAU SOUTH COUNTY STATION

Day Shift

**1 Sergeants
8 Deputies**

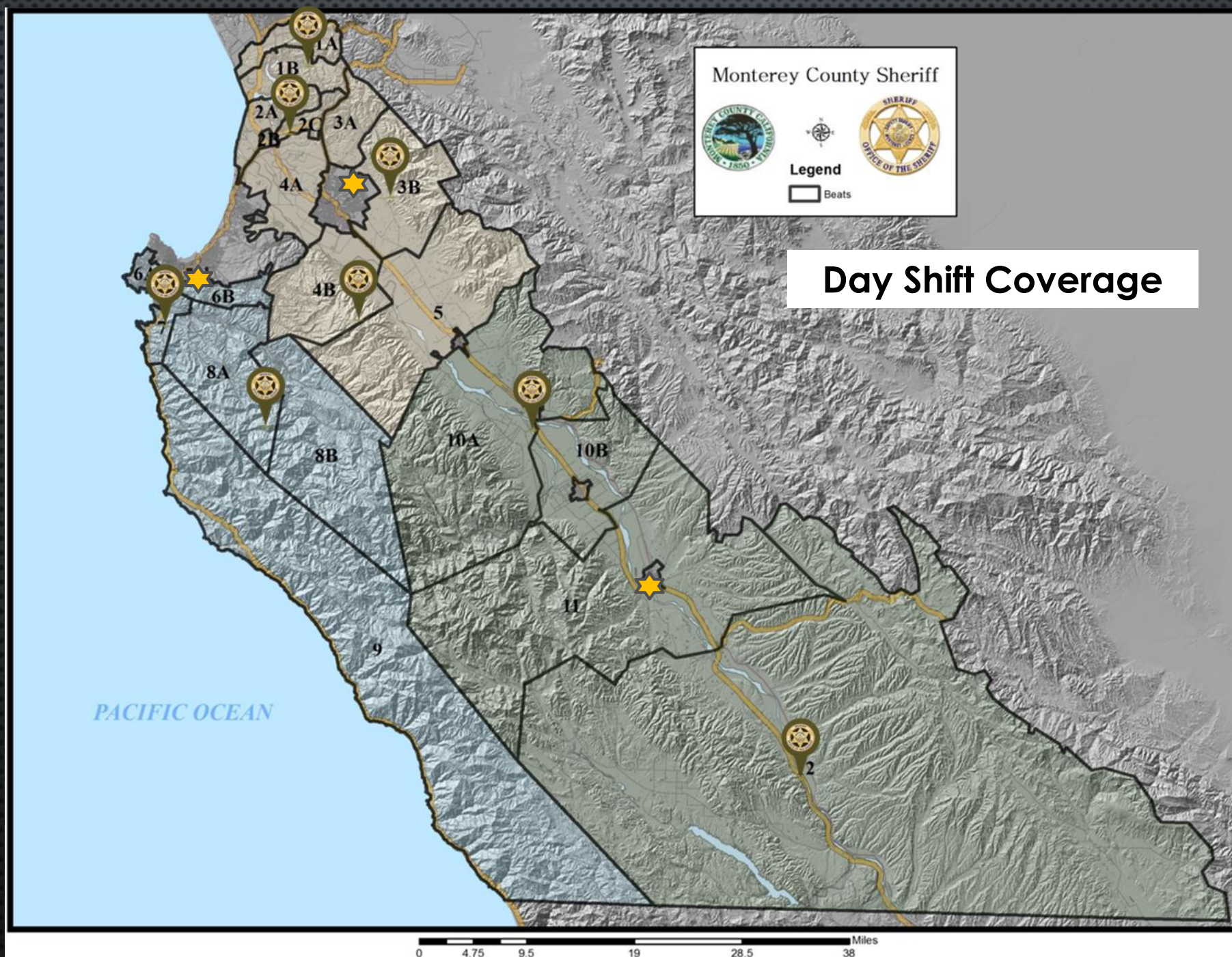
Swing Shift

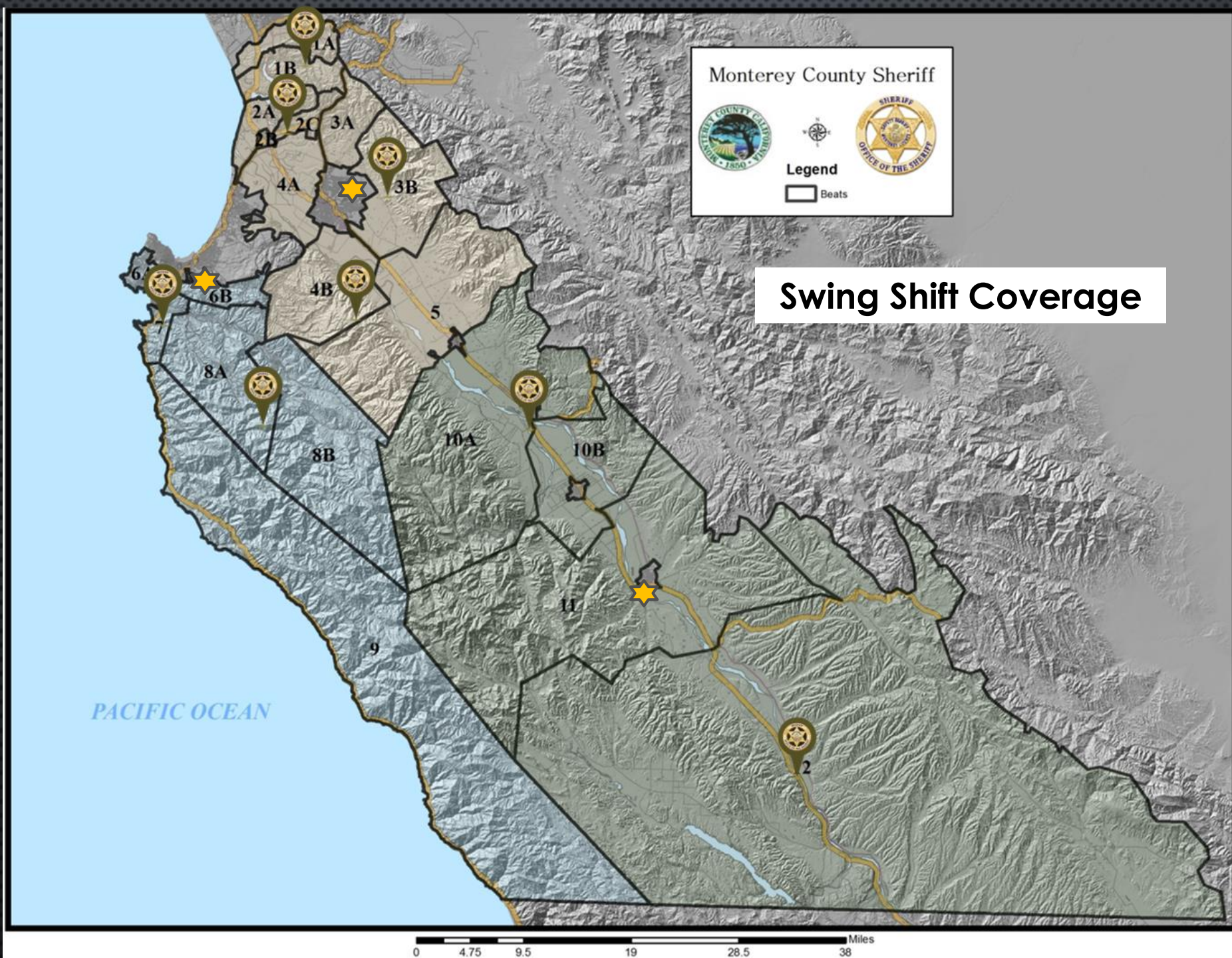
**None Assigned
Covered from
Central**

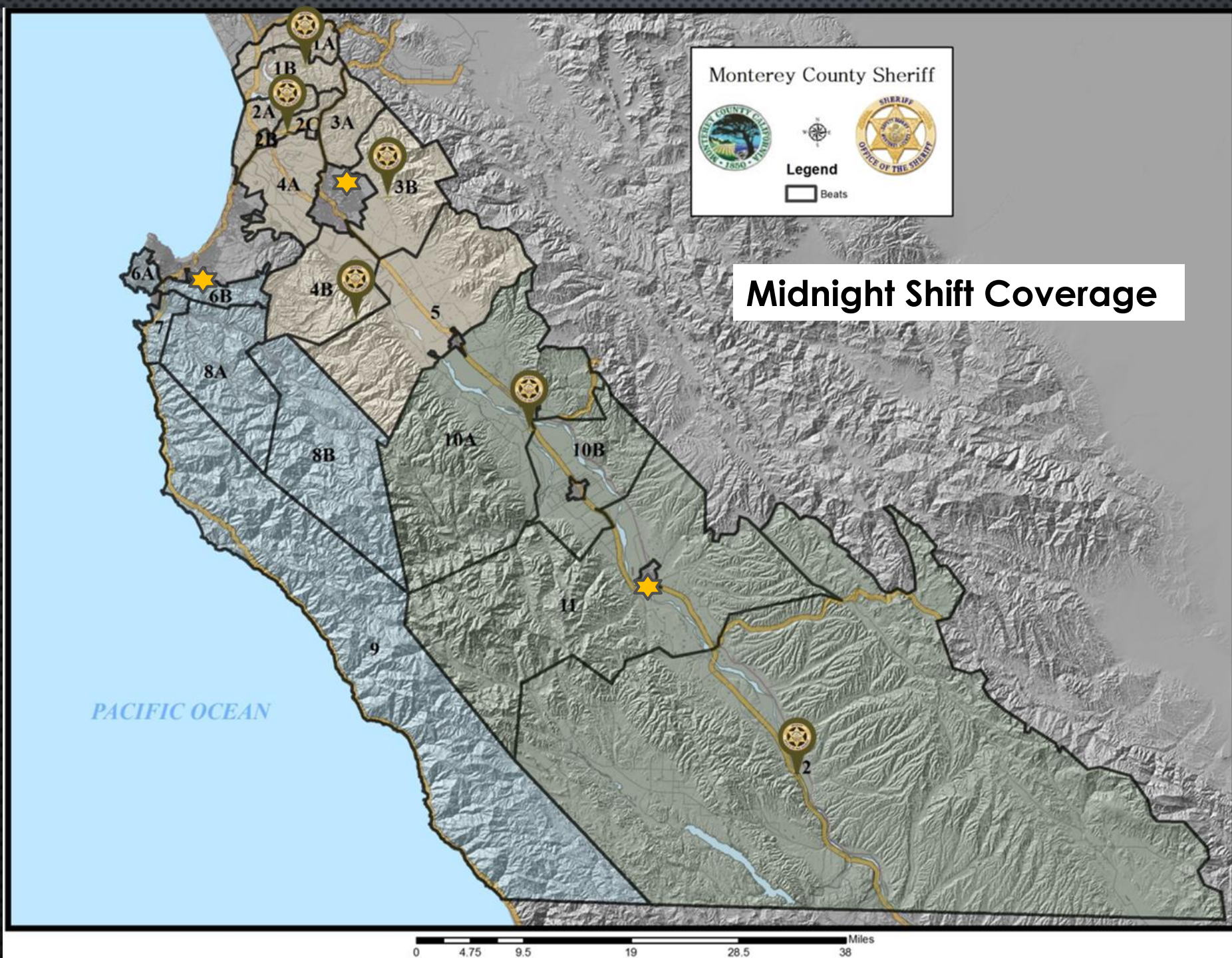
Midnights

**None Assigned
Covered from
Central**

1 Sergeant and 8 Deputies assigned to South County Station, with an average of 3 Deputies working per day covering 4 patrol beats and 2919 street miles.







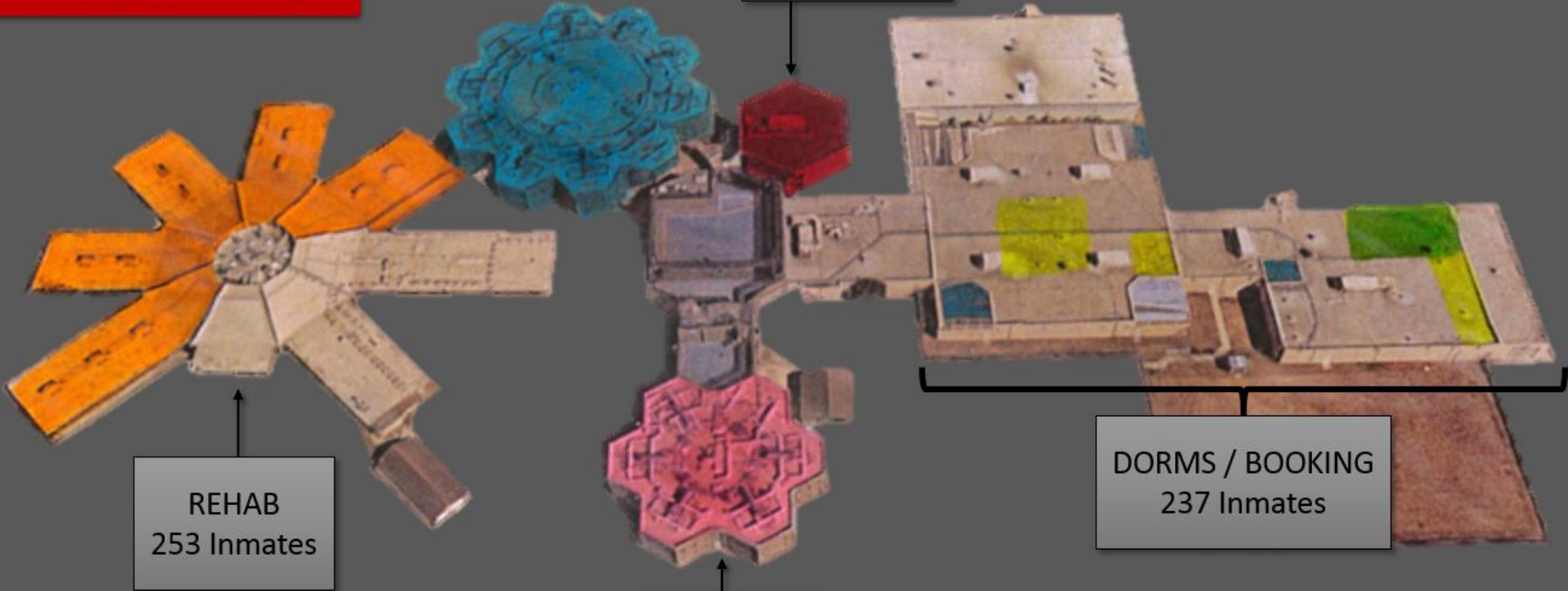
CORE MANDATES (ABRIDGED)

- CORRECTIONS
- **26605 CA Gov Code.** NOTWITHSTANDING ANY OTHER PROVISION OF LAW, EXCEPT IN COUNTIES IN WHICH THE SHERIFF, AS OF JULY 1, 1993, IS NOT IN CHARGE OF AND THE SOLE AND EXCLUSIVE AUTHORITY TO KEEP THE COUNTY JAIL AND THE PRISONERS IN IT, **THE SHERIFF SHALL TAKE CHARGE OF AND BE THE SOLE AND EXCLUSIVE AUTHORITY TO KEEP THE COUNTY JAIL AND THE PRISONERS IN IT.**
- **6030 CA PENAL CODE.** (A) THE BOARD OF STATE AND COMMUNITY CORRECTIONS **SHALL ESTABLISH MINIMUM STANDARDS FOR LOCAL CORRECTIONAL FACILITIES.**
- (B) THE STANDARDS SHALL INCLUDE, BUT NOT BE LIMITED TO, THE FOLLOWING AREAS: **HEALTH AND SANITARY CONDITIONS, FIRE AND LIFE SAFETY, SECURITY, REHABILITATION PROGRAMS, RECREATION, TREATMENT OF PERSONS CONFINED IN LOCAL CORRECTIONAL FACILITIES, AND PERSONNEL TRAINING.**
- **HERNANDEZ LITIGATION** — SETS A HIGHER BAR FOR SAFETY CELL, SOBERING CELL, SAFETY CHECKS, AND STAFFING PLANS.

TOTAL
INMATES – 910
DEPUTIES – 108

PODS
198 Inmates

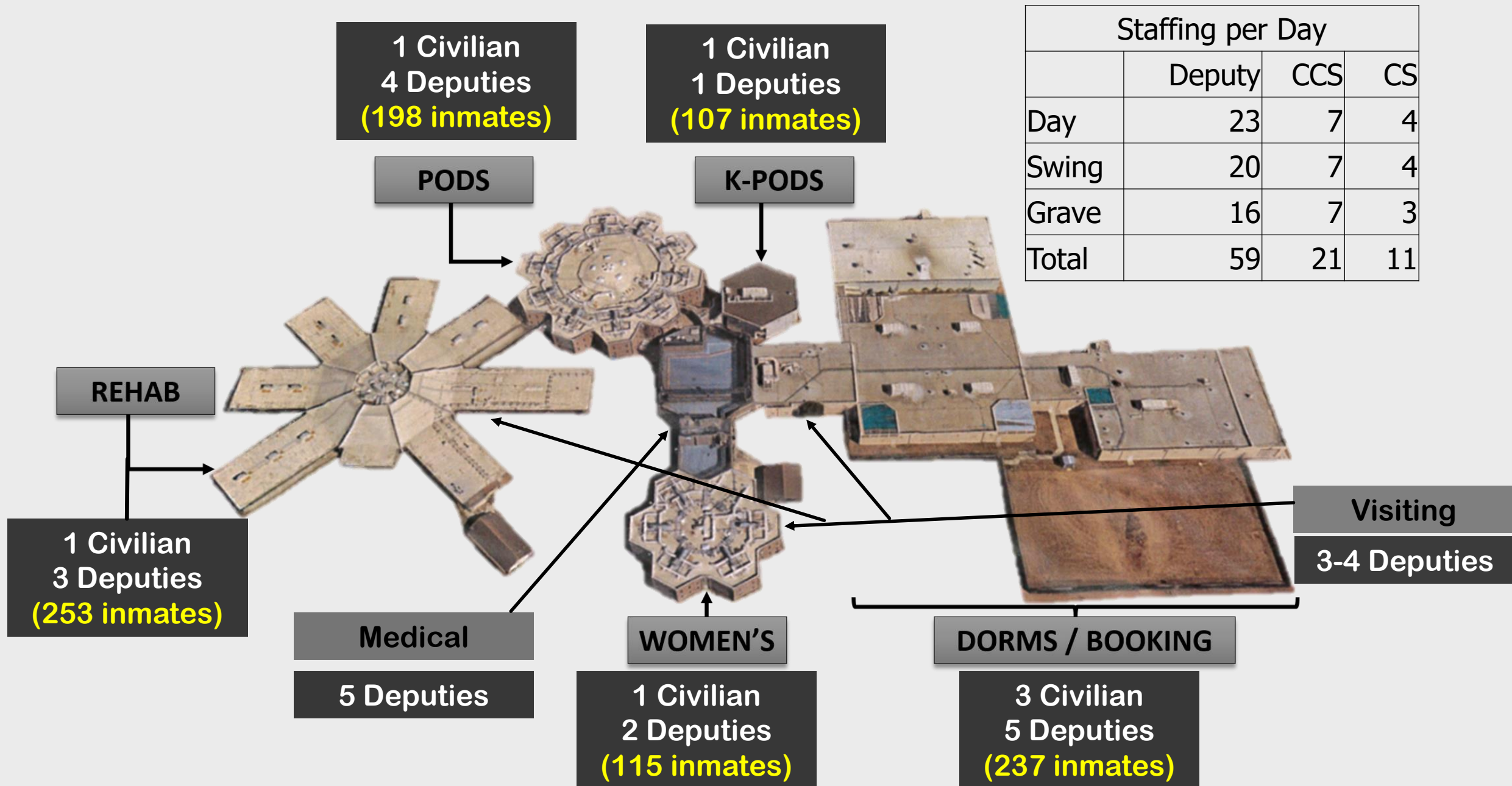
K-PODS
107 Inmates



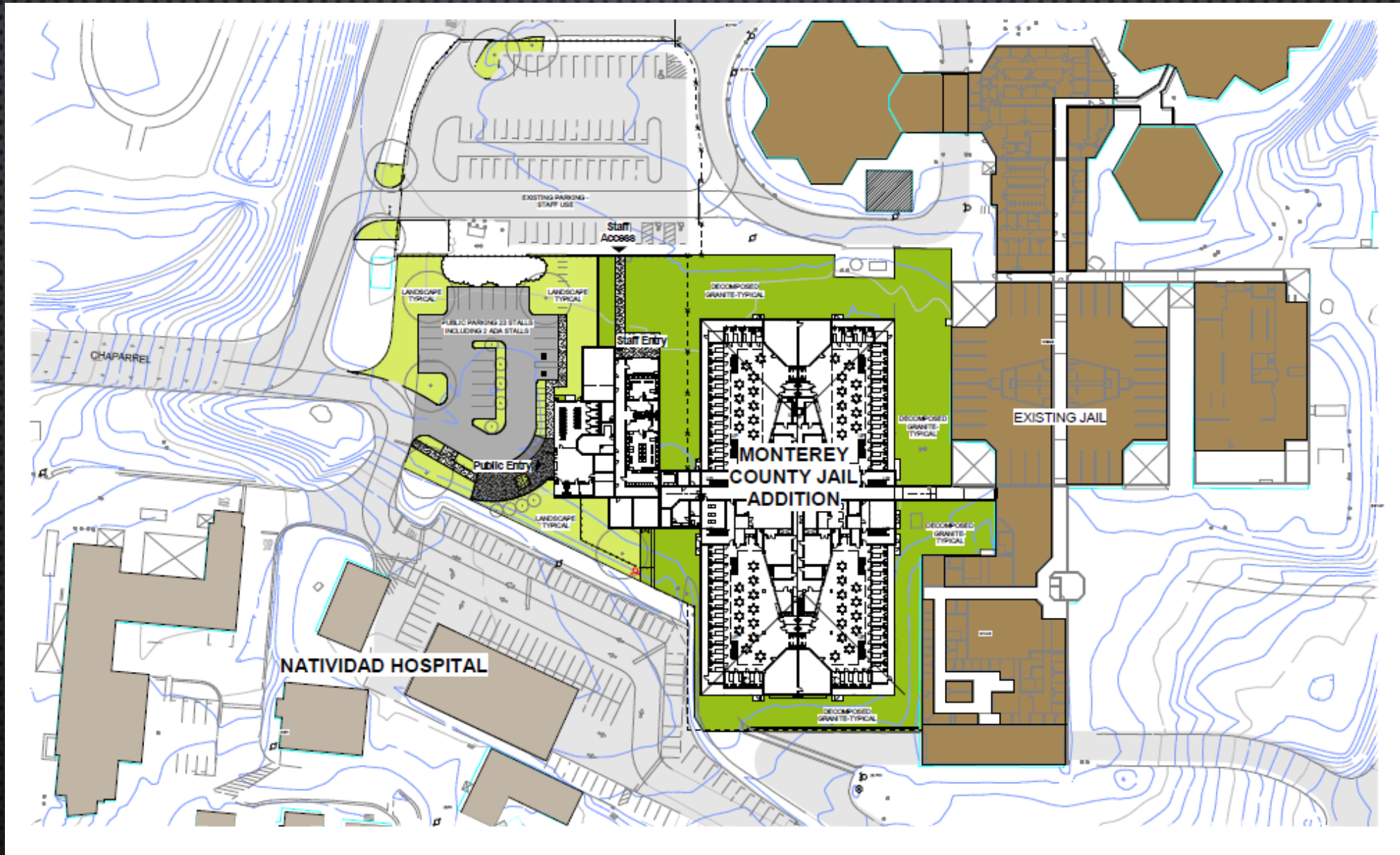
REHAB
253 Inmates

WOMEN'S
115 Inmates

DORMS / BOOKING
237 Inmates

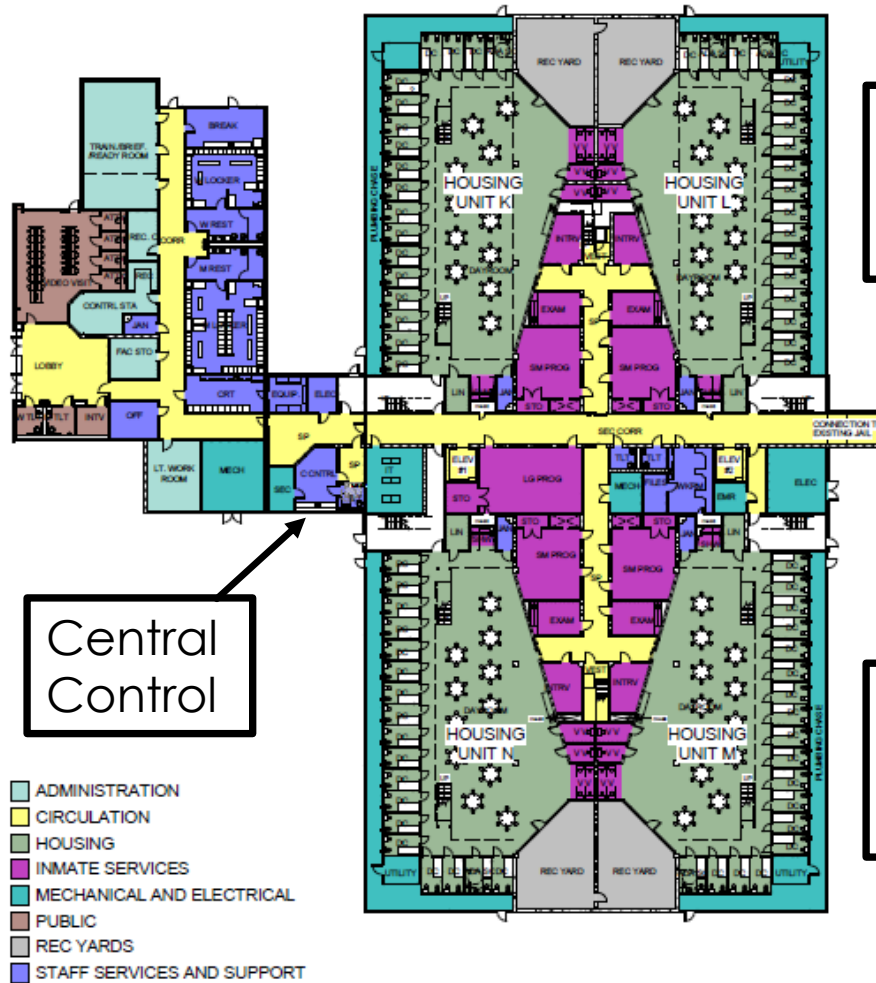


EXPANSION (JULY 2019)



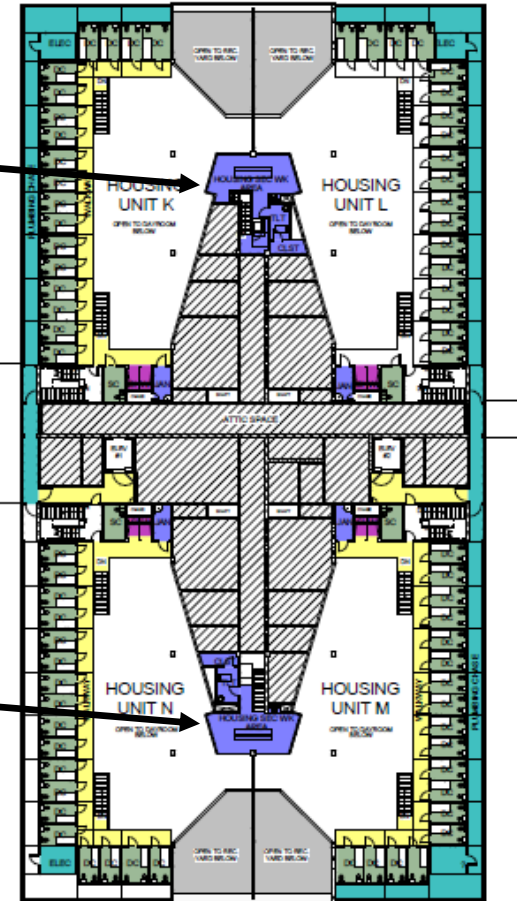
EXPANSION HOUSING – 8 UNITS @36 CELLS

288 DOUBLE CELLS – 576 BEDS



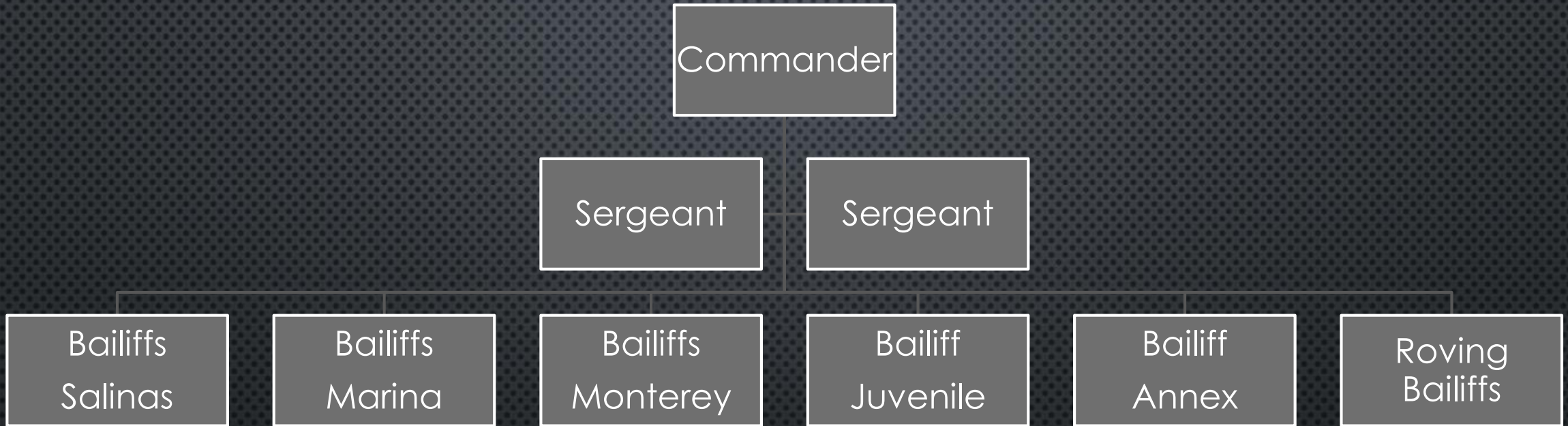
1 HOUSING FLOOR PLAN - LEVEL 1
SCALE 1/8" = 1'-0"

Housing Controls 2



2 HOUSING FLOOR PLAN - LEVEL 1 TIER
SCALE 1/8" = 1'-0"

CUSTODY OPERATIONS BUREAU COURT SERVICES



CA Gov Code 69922. (a) Except as otherwise provided by law, whenever required, **the sheriff shall attend all superior court sessions held within his or her county.**

The Court Services Division is responsible for the security of 20 Court Rooms spread throughout five court house locations in Salinas, Monterey, and Marina

CORE MANDATES (ABRIDGED)

CORONER

- **27491.** IT **SHALL BE THE DUTY OF THE CORONER TO INQUIRE INTO AND DETERMINE THE CIRCUMSTANCES, MANNER, AND CAUSE OF ALL VIOLENT, SUDDEN, OR UNUSUAL DEATHS; UNATTENDED DEATHS;** DEATHS WHERE THE DECEASED HAS NOT BEEN ATTENDED BY EITHER A PHYSICIAN OR A REGISTERED NURSE, WHO IS A MEMBER OF A HOSPICE CARE INTERDISCIPLINARY TEAM, AS DEFINED BY SUBDIVISION (G) OF SECTION 1746 OF THE HEALTH AND SAFETY CODE IN THE 20 DAYS BEFORE DEATH; DEATHS RELATED TO OR FOLLOWING KNOWN OR SUSPECTED SELF-INDUCED OR CRIMINAL ABORTION; KNOWN OR SUSPECTED **HOMICIDE, SUICIDE, OR ACCIDENTAL POISONING;** DEATHS KNOWN OR SUSPECTED AS RESULTING IN WHOLE OR IN PART FROM OR RELATED TO ACCIDENT OR INJURY EITHER OLD OR RECENT; DEATHS DUE TO **DROWNING, FIRE, HANGING, GUNSHOT, STABBING, CUTTING, EXPOSURE, STARVATION, ACUTE ALCOHOLISM, DRUG ADDICTION, STRANGULATION, ASPIRATION, OR WHERE THE SUSPECTED CAUSE OF DEATH IS SUDDEN INFANT DEATH SYNDROME; DEATH IN WHOLE OR IN PART OCCASIONED BY CRIMINAL MEANS; DEATHS ASSOCIATED WITH A KNOWN OR ALLEGED RAPE OR CRIME AGAINST NATURE; DEATHS IN PRISON OR WHILE UNDER SENTENCE;** DEATHS KNOWN OR SUSPECTED AS DUE TO CONTAGIOUS DISEASE AND CONSTITUTING A PUBLIC HAZARD; DEATHS FROM OCCUPATIONAL DISEASES OR OCCUPATIONAL HAZARDS; DEATHS OF PATIENTS IN STATE MENTAL HOSPITALS SERVING THE MENTALLY DISABLED AND OPERATED BY THE STATE DEPARTMENT OF STATE HOSPITALS; DEATHS OF PATIENTS IN STATE HOSPITALS SERVING THE DEVELOPMENTALLY DISABLED AND OPERATED BY THE STATE DEPARTMENT OF DEVELOPMENTAL SERVICES; DEATHS UNDER SUCH CIRCUMSTANCES AS TO AFFORD A REASONABLE GROUND TO SUSPECT THAT THE DEATH WAS CAUSED BY THE CRIMINAL ACT OF ANOTHER; AND ANY DEATHS REPORTED BY PHYSICIANS OR OTHER PERSONS HAVING KNOWLEDGE OF DEATH FOR INQUIRY BY CORONER. INQUIRY PURSUANT TO THIS SECTION DOES NOT INCLUDE THOSE INVESTIGATIVE FUNCTIONS USUALLY PERFORMED BY OTHER LAW ENFORCEMENT AGENCIES.
- (A) IN ANY CASE IN WHICH THE CORONER CONDUCTS AN INQUIRY PURSUANT TO THIS SECTION, THE **CORONER OR A DEPUTY SHALL PERSONALLY SIGN THE CERTIFICATE OF DEATH.** IF THE DEATH OCCURRED IN A STATE HOSPITAL, THE CORONER SHALL FORWARD A COPY OF HIS OR HER REPORT TO THE STATE AGENCY RESPONSIBLE FOR THE STATE HOSPITAL.

CORE MANDATES (ABRIDGED)

- RECORDS
- **15152 CA Gov Code.** THE DEPARTMENT OF JUSTICE SHALL MAINTAIN A **STATEWIDE TELECOMMUNICATIONS SYSTEM OF COMMUNICATION FOR THE USE OF LAW ENFORCEMENT**
- **15153 CA Gov Code.** **THE SYSTEM SHALL BE UNDER THE DIRECTION OF THE ATTORNEY GENERAL**, AND SHALL BE USED EXCLUSIVELY FOR THE OFFICIAL BUSINESS OF THE STATE, AND THE OFFICIAL BUSINESS OF ANY CITY, COUNTY, CITY AND COUNTY, OR OTHER PUBLIC AGENCY.
- **15165 CA Gov Code.** ANY SUBSCRIBER TO THE SYSTEM SHALL FILE WITH THE ATTORNEY GENERAL AN **AGREEMENT TO CONFORM TO THE OPERATING POLICIES, PRACTICES AND PROCEDURES APPROVED BY THE COMMITTEE UNDER PENALTY OF SUSPENSION OF SERVICE** OR OTHER APPROPRIATE DISCIPLINE BY THE COMMITTEE.
- **14211 CA Penal Code**(a) ALL LOCAL POLICE AND SHERIFFS' DEPARTMENTS SHALL ACCEPT ANY REPORT, BY ANY PARTY, INCLUDING ANY TELEPHONIC REPORT, OF A MISSING PERSON, INCLUDING RUNAWAYS, WITHOUT DELAY AND SHALL GIVE PRIORITY TO THE HANDLING OF THESE REPORTS OVER THE HANDLING OF REPORTS RELATING TO CRIMES INVOLVING PROPERTY.
- (E) IF THE PERSON REPORTED MISSING IS UNDER 21 YEARS OF AGE, OR IF THERE IS EVIDENCE THAT THE PERSON IS AT RISK, THE LAW ENFORCEMENT AGENCY RECEIVING THE REPORT SHALL, WITHIN TWO HOURS AFTER THE RECEIPT OF THE REPORT, ELECTRONICALLY TRANSMIT THE REPORT TO THE DEPARTMENT OF JUSTICE **VIA THE CALIFORNIA LAW ENFORCEMENT TELECOMMUNICATIONS SYSTEM** FOR INCLUSION IN THE VIOLENT CRIME INFORMATION CENTER AND THE NATIONAL CRIME INFORMATION CENTER DATABASES.

FEWER EMPLOYEES = INCREASED OVERTIME

EMPLOYEE BURNOUT, INCREASED SICK LEAVE, SAFETY CLAIMS, WORK COMP, ETC.

- AS SHOWN IN THE PROCEEDING SLIDES, MANY OF THE SHERIFF'S RESPONSIBILITIES ARE DRAWN FROM STATUTORY OR CASE DECISION MANDATES. ACCORDINGLY, MANY POSITIONS ARE REQUIRED TO BE FILLED. THE FOLLOWING POSITIONS MUST BE FILLED ON A 24 X 7 BASIS
 - DEPUTY SHERIFF (PATROL & CORRECTIONS)
 - CUSTODY AND CONTROL SPECIALIST
 - RECORDS SPECIALIST
 - CORRECTIONS SPECIALIST.
- THE FOLLOWING POSITIONS MUST BE COVERED EVERY DAY COURT IS IN SESSION
 - DEPUTY SHERIFF (BAILIFF)
- THE FOLLOWING POSITIONS MUST BE COVERED ANY TIME WHEN NEEDED 24 X 7
 - DEPUTY CORONER

POTENTIAL CUTS

<u>Priority #</u>	<u>Aug #</u>	<u>EE #</u>	<u>Description</u>	<u>Impact</u>
1	AUG 6	15	Filled Deputy-Patrol	Inadequate Patrol Coverage, increased O.T.
2	AUG 4	4	Filled Deputy-Corrections	Inadequate Jail Coverage, Increased O.T.
3	AUG 12	1	Vacant Chief Deputy	Inadequate oversight of Jail / Hernandez
4	AUG 3	1	Filled Jail Commander	Lose manager over inmate programs
5	AUG 18	1	Vacant Patrol Commander	Lose manager over SWAT, BOMB, K9
6	AUG 15	5	Vacant Custody & Control Spc	Increased O.T. to fill control stations
7	AUG 5	1	Filled Patrol Sergeant	Increased O.T. for Sergeant Coverage
8	AUG 2	1	Filled Jail Sergeant	Increased O.T. for Sergeant Coverage
9	AUG 23	1	Filled Deputy-Corrections	Inadequate Jail Coverage, Increased O.T.
10	AUG 9	1	Vacant Accounting Clerical Spr	Delinquent Payments to Vendors, Late billings, decreased revenues
11	AUG 14	1	Vacant Deputy-Corrections	Inadequate Jail Coverage, Increased O.T.

POTENTIAL CUTS (2)

<u>Priority #</u>	<u>Aug #</u>	<u>EE #</u>	<u>Description</u>	<u>Impact</u>
12	AUG 20	3	Vacant Investigations Detectives	Continued diminished Investigations Capacity
13	AUG 11	2	Vacant Records Specialist I	Inadequate Coverage, DOJ, Increased O.T.
14	AUG 7	1	Filled Vehicle Abatement Officer	50% cut. Lost enforcement
15	AUG 17	1	Vacant Patrol Sergeant	Increased O.T. for Sergeant Coverage
16	AUG 19	1	Vacant Investigative Sergeant	Diminished supervision in investigations
17	AUG 16	2	Filled Corrections Specialist	Increased O.T. to fill shifts, work comp
18	AUG 8	1	Vacant Senior Account Clerk	Delinquent Payments to Vendors, Late billings, decreased revenues
19	AUG 10	1	Vacant Senior Civil Clerk	Decreased Services and Revenues
20	AUG 21	1	Vacant CPS -> MA II	Loss of dedicated PIO / community outreach
21	AUG 1	1	Filled Bailiff	Increased O.T. to fill court
22	AUG 13	1	Vacant Bailiff	Increased O.T. to fill court

ADDITIONAL AUGMENTATION REQUESTS

<u>Additional</u>				
23	AUG 32		Windows 10 Upgrade	Windows 7 is unsupported and must be upgraded
24	AUG 24	9	Deputy-Corrections for Jail Expansion	The Deputies, CCSs, and ISSs were all developed
25	AUG 25	9	Custody & Control Specialist for Jail Exp	For the BSCC staffing plan for the jail expansion. The
26	AUG 26	3	Inmate Services Specialist for Jail Exp.	Lack of these positions will jeopardize opening
27	AUG 27	1	Accounting Technician for Inmate med.	The loss of Inmate Medi-Cal reimbursements
28	AUG 22	2	Records Specailist II-Warrants/ACJIS	Will continue to pay overtime to be in compliance with warrant entries, validations, verifications, and cross checks for DOJ.
29	AUG 29	7	1 Patrol Sgt.& 6 Dep. 4 vehicles, new EE equip. for Marijuana Program	The inability to investigate and enforce provisions of the county cannabis ordinance.
30	AUG 28	1	Records Specialist I-Patrol	No data collection / entry for cannabis enforcement
31	AUG 30		60 Mobile Computers	As old systems fail, This will eliminate in field reporting
32	AUG 31		Jail Identification System	No impact to existing operation. New program

PROTECT OUR INVESTMENT

- **THE CURRENT AUGMENTATION REQUEST ASKS TO RESTORE 24 FILLED PEACE OFFICER POSITIONS. THE FOLLOWING CHART SHOWS THE COST TO GET ONE RECRUIT HIRED AND GRADUATED FROM A BASIC LAW ENFORCEMENT ACADEMY AND THE COST ASSOCIATED WITH CUTTING 24 POSITIONS. THIS IS MONEY ALREADY EXPENDED.**
- **THESE EXPENDITURES ARE “NON REFUNDABLE”**
- **WE WILL SPEND THIS MONEY AGAIN TO REFILL BEHIND FUTURE VACANCIES AS THEY ARISE**

Costs for a New Sworn

Recruit cost	2,500
Academy Tuition	4,301
Initial Uniform	960
Portable Radio	5,000
Taser	1,200
Basic Equipment	1,200
Total	<u>15,161</u>

Cost Per Recruit at Graduation

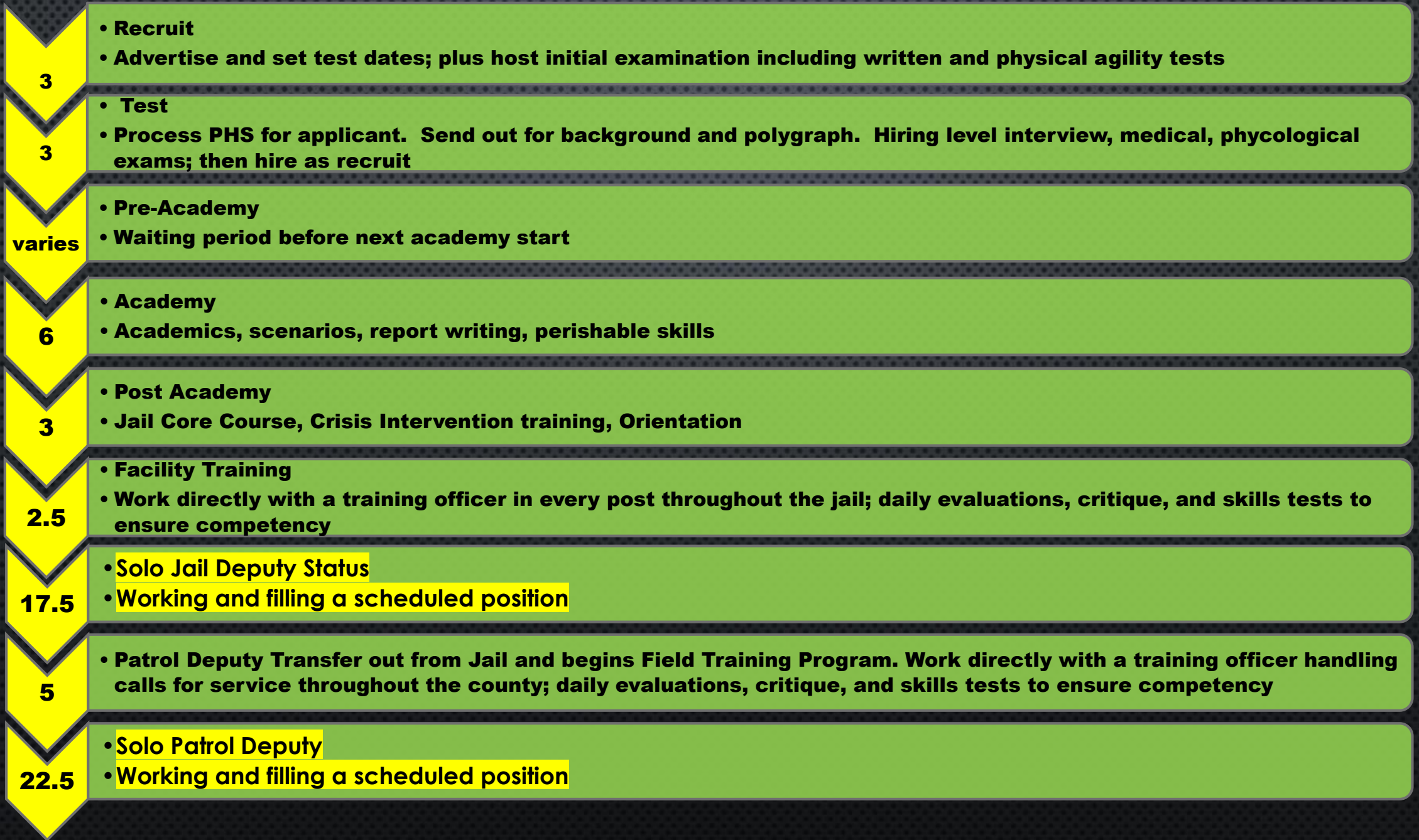
Initial Costs	8,961
S & B in Academy	46,306
	<u>55,267</u>
24 Positions	<u>1,326,414</u>

It Will Take Years to Recover from Losing Filled Safety Positions

T
i
m
e
l
i
n
e

i
n

m
o
n
t
h
s



CONCLUSION

- 3 YEARS AGO, THE SHERIFF'S OFFICE PRIORITIZED FILLING VACANCIES
- WE ARE JUST BEGINNING TO SEE THE BENEFITS OF ALL THIS WORK
 - VACANCIES ARE DOWN
 - OVERTIME USE IS SLOWING
 - WORK COMP CLAIMS ARE DOWN
- WE NEED OUR AUGMENTATION REQUESTS TO FILL PEACE OFFICER POSITIONS, PROVIDE CRITICAL CIVILIAN SUPPORT, AND TO PROPERLY STAFF AND OPEN OUR JAIL EXPANSION.