



Hornbeck Collection – Historical Land Use in California

*Ruben Mendoza, Ph.D., Chair, School of Social, Behavioral & Global Studies
before the Monterey County Board of Supervisors on May 15, 2018*

Origin of the Hornbeck Collection Special Project

Beginning in the Spring of 2014, efforts were initiated to bring to life a vision of the well-known, innovative grower and philanthropist Robert V. (Bob) Antle. A generous donation to CSUMB from Bob led to the establishment of the Tanimura & Antle Family Memorial Library. His dream was that CSUMB become a center for the study of agriculture and water application, as well as a repository for resources bearing on the history, historical geography, climatology and environmental history of the drought-vulnerable region. He understood the historical importance of land and water use in the Salinas River Valley given that this was where the Nation's modern agricultural industry and use of irrigation were first developed by the indigenous population and missionaries.

The relationship between Bob Antle and Dr. David Hornbeck has its roots in the Monterey County farm fields where as teenagers they worked together. Bob learned the agricultural business and went on to develop and expand the Antle enterprises. Dave, in the meantime, served in the U.S. Air Force and then proceeded to earn his BA and MA from Fresno State University in 1968 and 1969, and his Ph.D. from the University of Nebraska in 1974. He became a noted historical geographer at California State University-Northridge where he lectured and wrote for the next 35 years. Much of Dave's research and writing focused on the California missions and populations, as well as agricultural and water resources throughout California with a special interest in the Salinas Valley region.

Initial Emphasis

of the Hornbeck Collection has been on the *Salinas Valley and Carmel Valley Groundwater Basins*, historically a vibrant agricultural region and remaining so today, and on the *American Period* with a substantial focus on the California State and Federal documents.

HORNBECK COLLECTION—HISTORICAL LAND USE IN CALIFORNIA

| <u><i>American Period</i></u> | <u><i>Groundwater Basins</i></u> |
|---|---|
| <u>American Period Maps</u> | <u>Salinas River and Carmel River Groundwater Basins</u> |
| <u>California Land Patents Collection</u> | <u>Groundwater Basin Maps</u> |
| <u>Overview of California Land Claims and the Public Domain</u> | <u>Historical and Contemporary Comparison Maps</u> |
| <u>Private Land Claims by County</u> | <u>Land Distribution in Monterey and San Luis Obispo Counties After California Became a State</u> |
| <u>California Land Pamphlets</u> | <u>GLO Land Patent Maps in Salinas Valley Groundwater Basin</u> |
| <u>California Land Pamphlet Inventory</u> | <u>Individual Ranches in Monterey and SLO Counties</u> |
| <u>Land Pamphlets</u> | <u>Miscellaneous Monterey and San Luis Obispo County Documents & Reports</u> |
| <u>Federal Government Documents</u> | <u>Monterey County Crop Reports 1929 - 2014</u> |
| <u>California Indians and USA</u> | <u>Monterey County Water Resources Agency</u> |
| <u>Miscellaneous Federal Documents & Reports</u> | <u>Engineering Reports</u> |
| <u>National Archives Documents</u> | <u>Water Reports</u> |
| <u>US and Indian Relations</u> | <u>Post-1871 Land Patents in the Basin</u> |
| <u>US Government Legislation and Statutes</u> | <u>Post-1872 State Water Claims</u> |
| <u>US Treaties and Reports</u> | <u>Pre-1872 Land Patents in the Basin</u> |
| <u>State of California Documents</u> | <u>San Luis Obispo Crop Reports</u> |
| <u>California Board of Equalization Reports</u> | <u>San Luis Obispo Public Works</u> |
| <u>California Legislation and Statutes</u> | <u>Engineering Reports</u> |
| <u>Indian Statutes</u> | <u>Water Reports</u> |
| <u>Swamp and Overflow Lands Statutes</u> | <u>State and Federal Documents Relating to Monterey and San Luis Obispo Counties</u> |
| <u>Water Statutes</u> | <u>Summaries of Data Relating to the Basins</u> |
| <u>Miscellaneous Documents and Reports</u> | |
| <u>Surveyor General Reports</u> | |

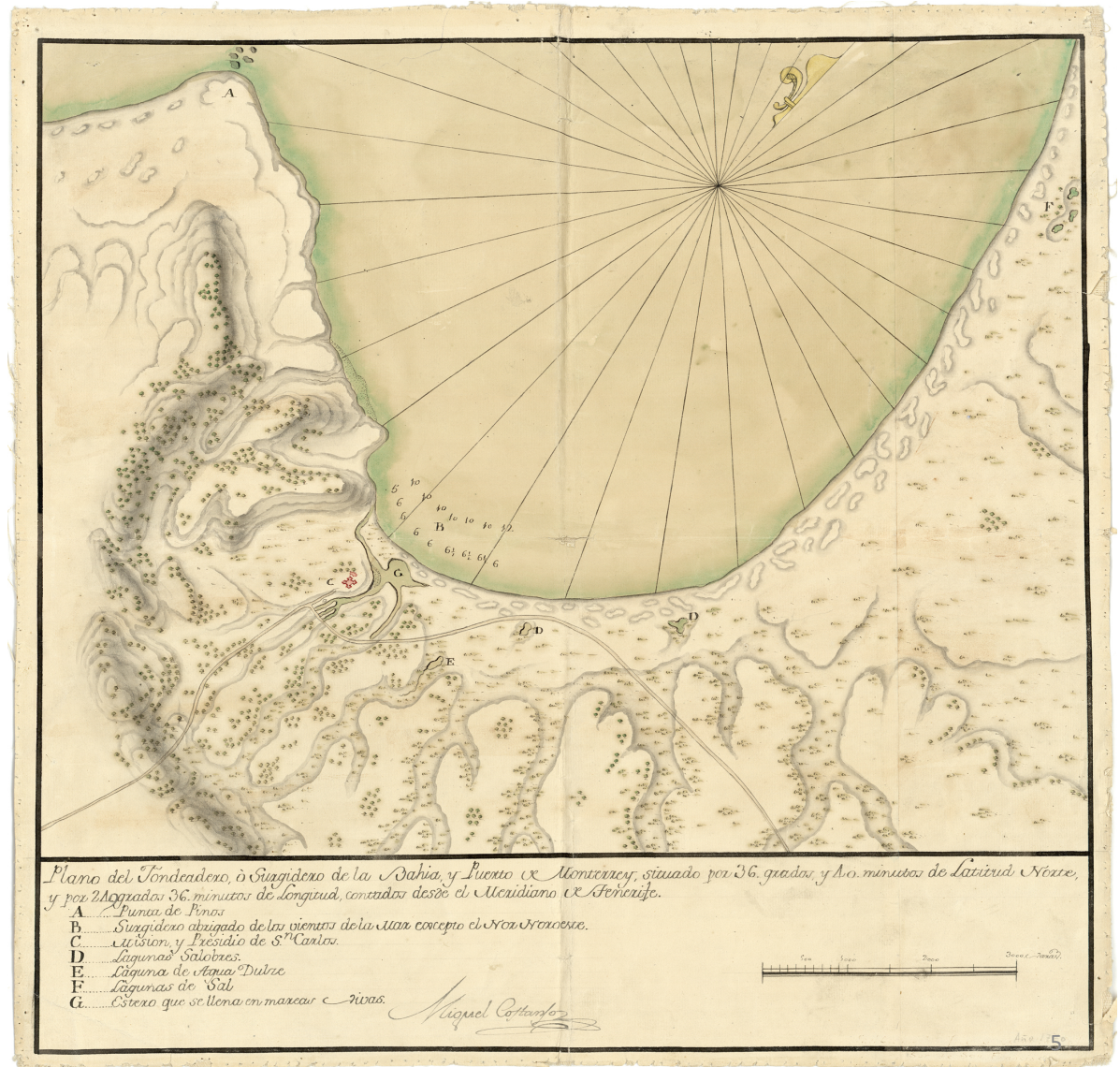
The Hornbeck Collection is a Unique Resource

For scholars, students, community planners, water resource managers, and legislators, the Hornbeck Collection provides online access to a broad range of historic and contemporary documents and maps pertaining to land use and water development.

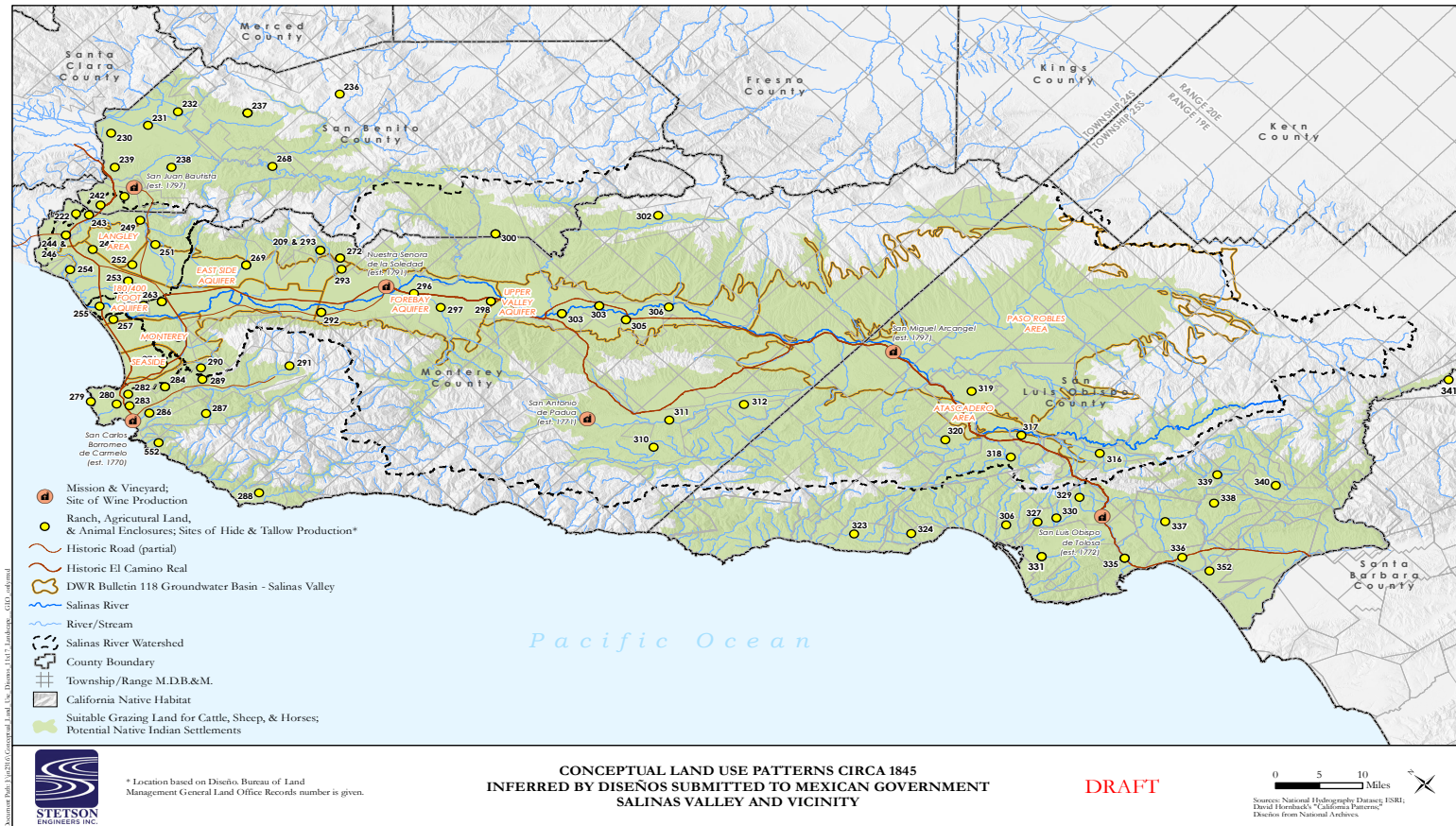
The collection connects historical maps, data, documents and publications about past land use to present-day challenges facing communities across the State. With this information and the lessons learned, solutions to problems can be developed. For example:

- Monterey County -- this nexus of information is particularly relevant because of the problems facing residents today due to critically over-drafted parts of the groundwater basin – tied directly to past and current land use.
- Sustainable Groundwater Management plans requirements for groundwater basins. The historical and present-day land use information in the Salinas Valley and Carmel Valley Groundwater Basins is critical in developing a sustainable plan that will work for the community far into the future.
- Compare historic 1770 map of the Monterey Bay area with current conditions

1770 Map
of the Tondeadero or
Surgidero de la Bahía
and Puerto de
Monterrey - located by
36 degrees and 40
minutes of North
latitude



1845 - Conceptual Land Use Patterns Circa 1845 Inferred by Diseños Submitted to Mexican Government, Salinas Valley and Vicinity [Draft 2017]

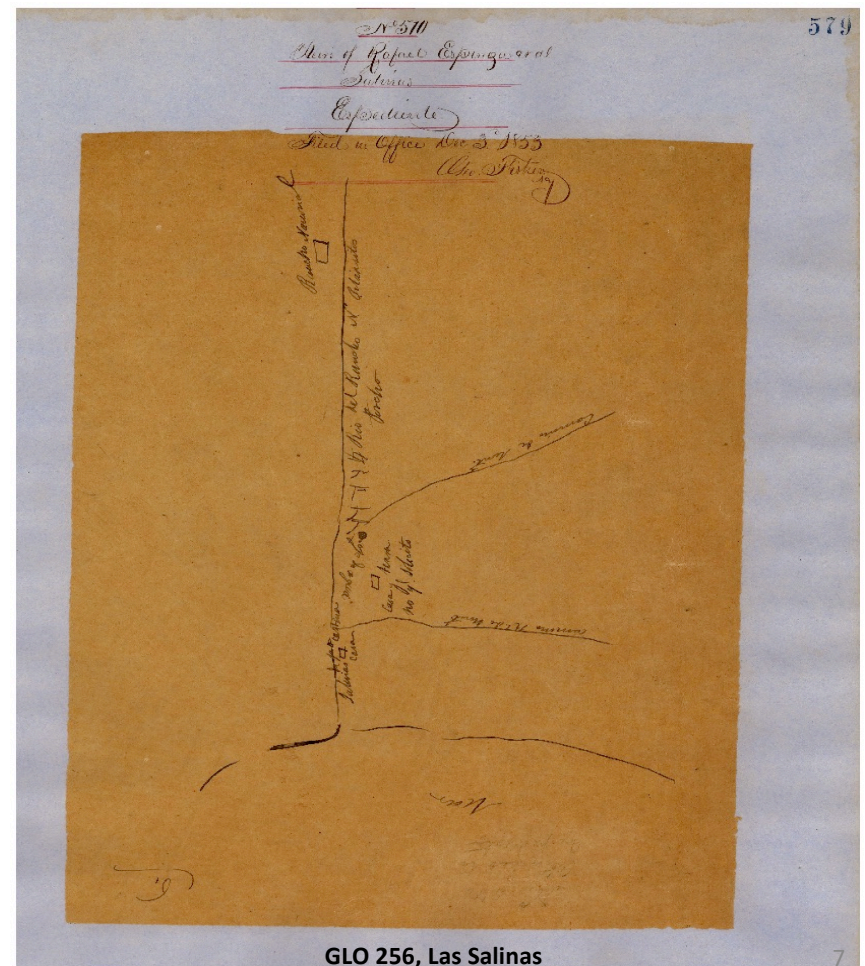


Diseños

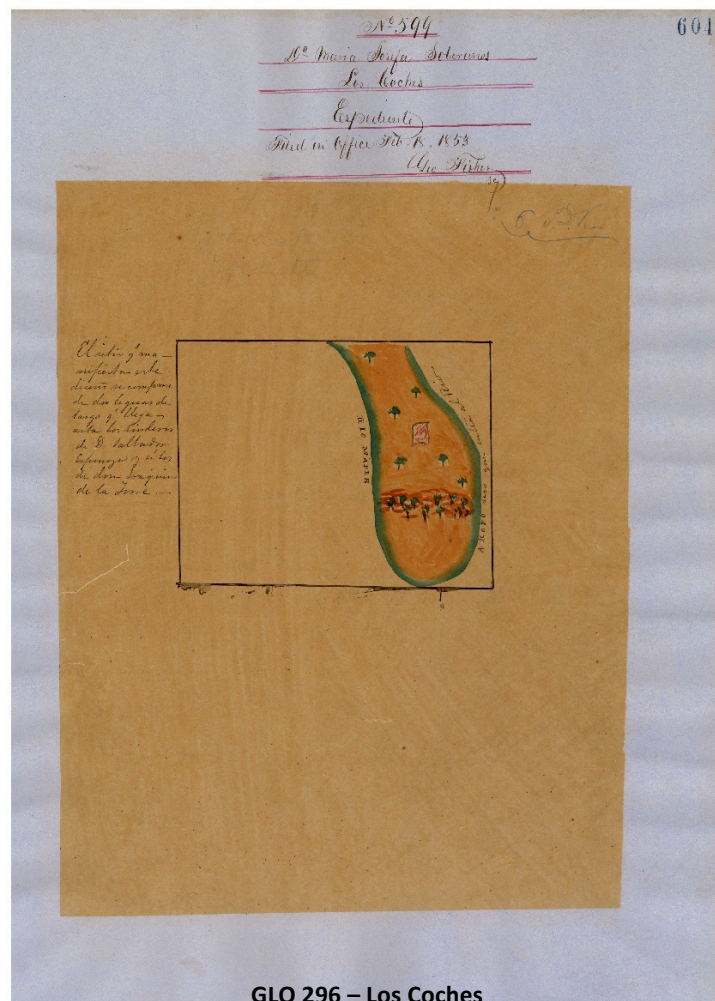
Diseños are simple sketches of rancho areas that accompanied petitions to the Mexican government for grants in Alta California after 1828.



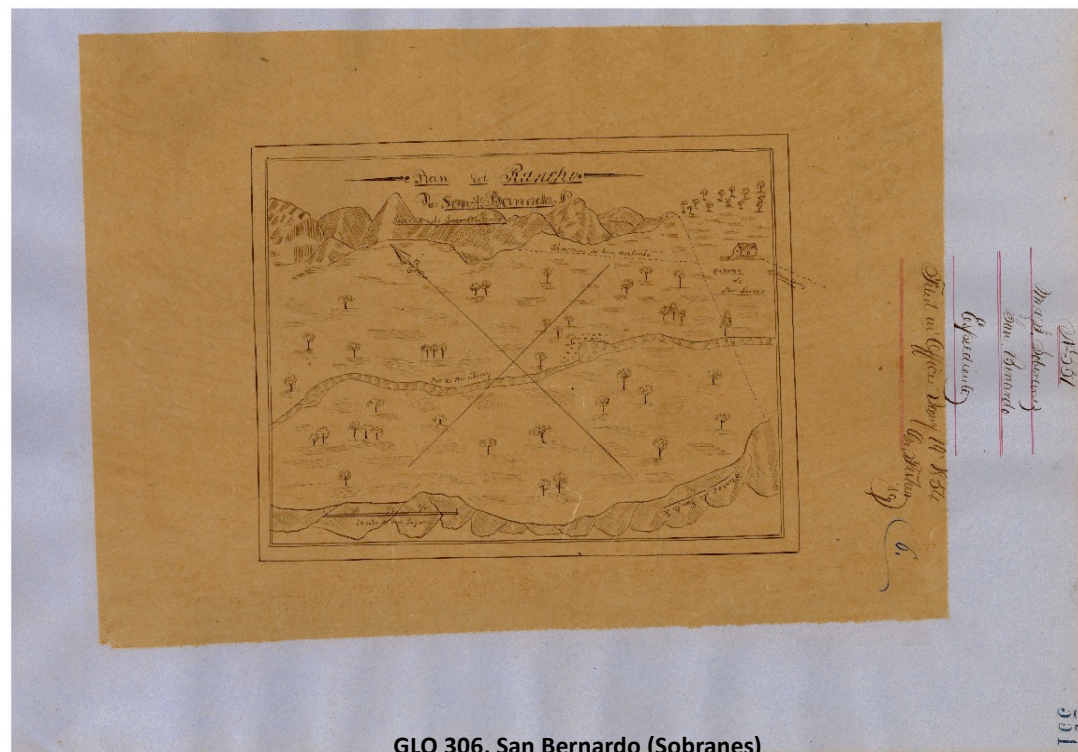
GLO 255, Rincon de las Salinas
Monterey Bay Area



GLO 256, Las Salinas
Monterey Bay Area



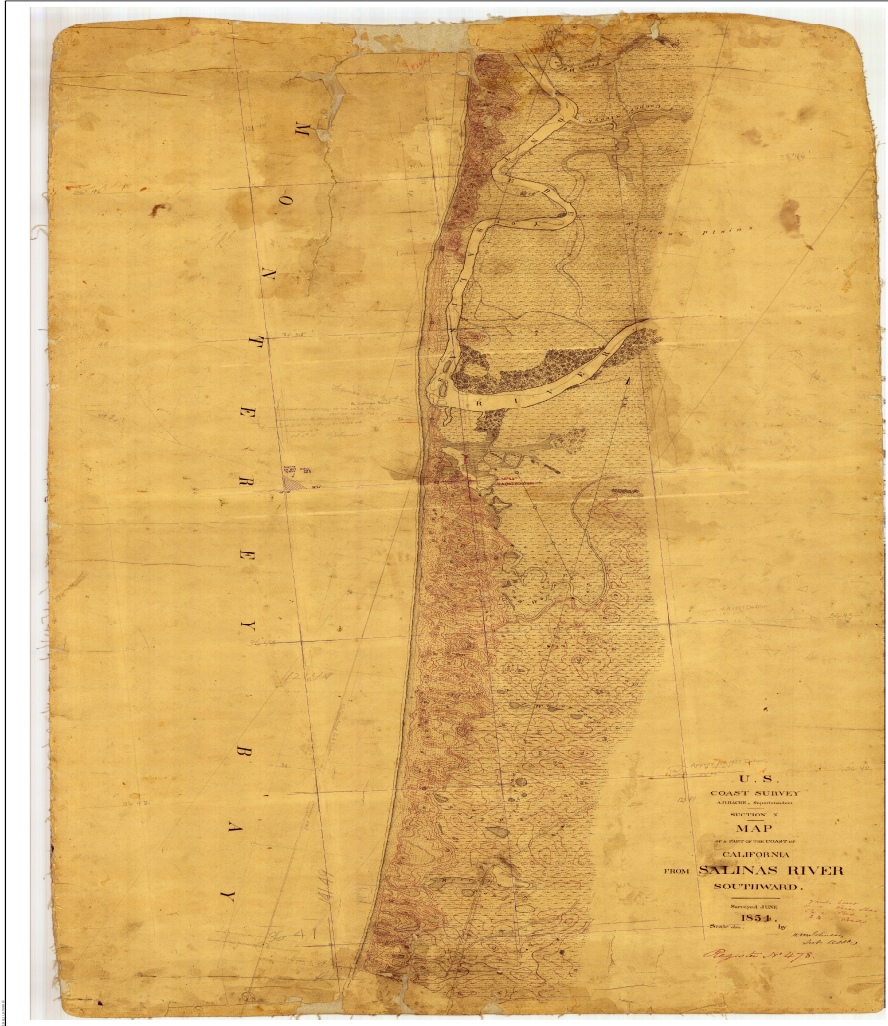
GLO 296 – Los Coches
Soledad Area



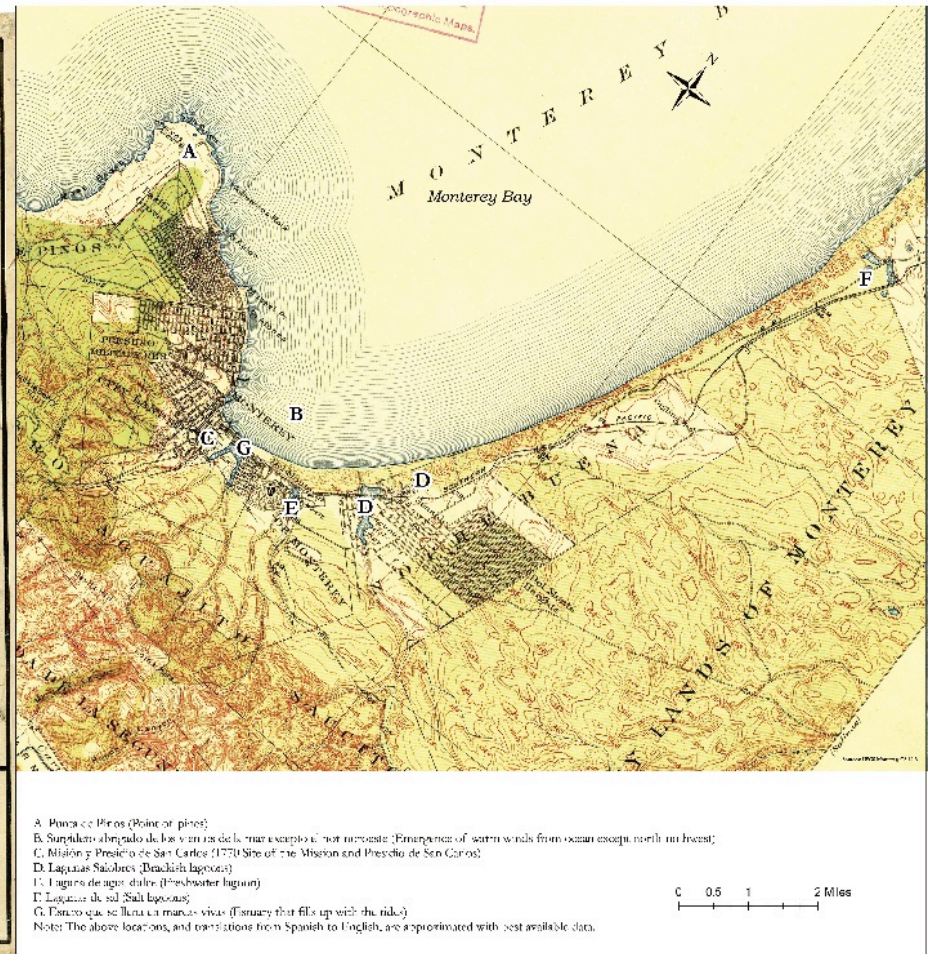
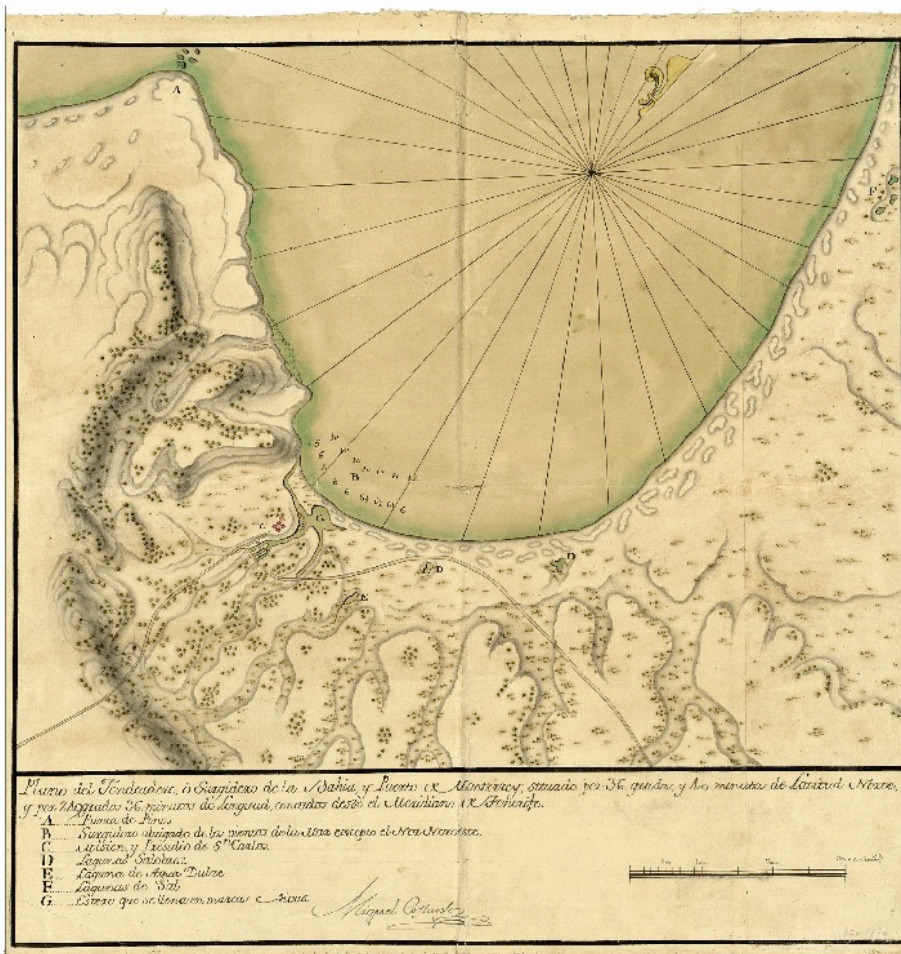
GLO 306, San Bernardo (Sobranes)
North of Upper Valley Aquifer



GLO 319, Santa Ysabel (Arce)
Atascadero Area

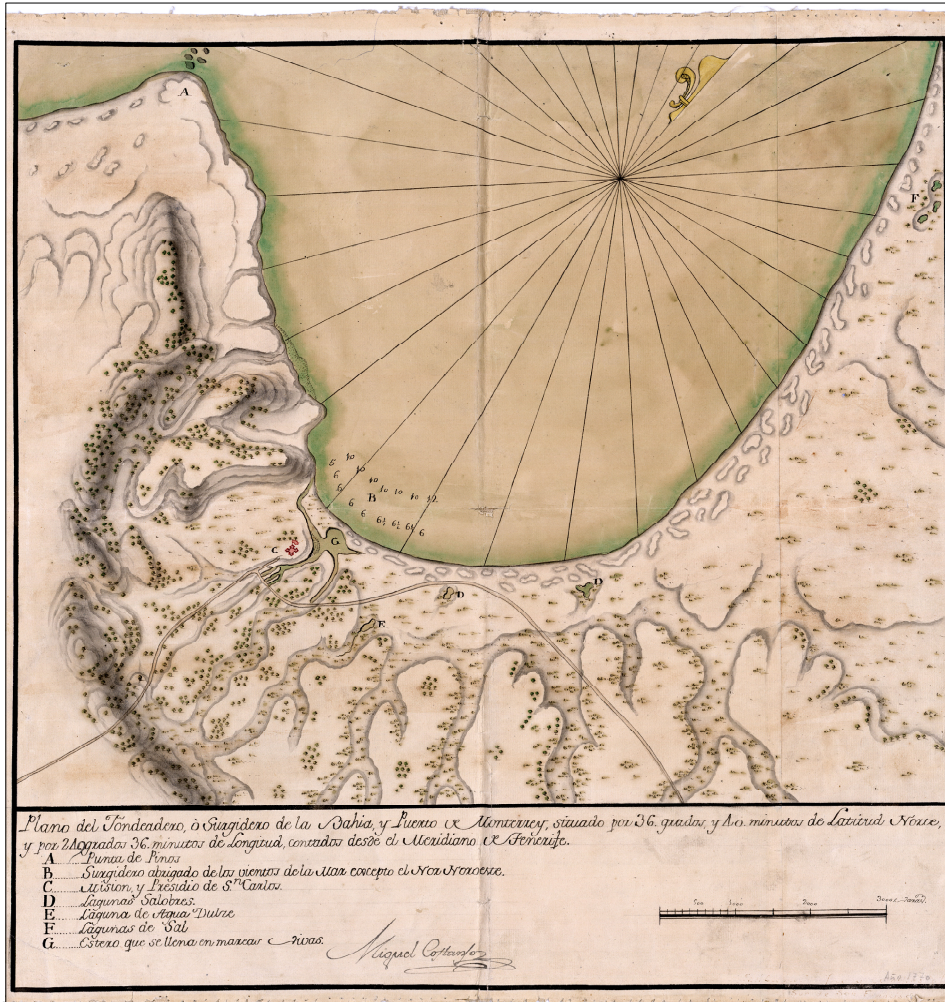


DRAFT COMPARISON OF 1854 U.S. COAST SURVEY MAP WITH 2016 SATELLITE IMAGERY OF THE MONTEREY BAY AREA



COMPARISON OF 1770 MAP WITH 1913 U.S.G.S. MAP OF THE MONTEREY BAY AREA

Comparison of 1770 Map with 2016 Satellite Imagery of the Monterey Bay Area



Website Activity Since Its Inception

- Over 9,500 downloads around the world (approximately 7,300 throughout the US and over 3,500 in California alone)
- At least 679 institutions have downloaded documents from the website with the following breakdown as to types of organizations:
 - 39% Education
 - 38% Commercial
 - 15% Governmental agencies at local, state and federal level
 - 7% Misc. organizations, military, law firms, libraries, and individuals

Hornbeck Collection Contributors

Dr. David and Mrs. Virginia Hornbeck

- ***Work Progress Administration Abstracts*** (WPA Abstracts) for each patented Spanish and Mexican land grant located in California (A summary document prepared in 1938 under the U.S. Work Progress Administration program detailing the history of a rancho beginning with the Spanish-American land through the U.S. patenting process.)
- ***Books*** (50 boxes – 1400)
- ***Academic Research*** (25 boxes)
- ***Microfilm Collection*** (112 rolls)

U.S. National Archives (785 Diseños; 26 Expediente)

Spanish Army and Navy Archives through the assistance of the DAR (40 historical maps ranging from 1587 to 1828)

Bancroft Archives (links to diseños not found at National Archives and related case history notes)

U.S. Bureau of Land Management (land patents, surveys and related documents)

Monterey County Water Resources Agency (water and engineering reports)

Monterey County Recorder's Office (State water claims)

Monterey County, Office of Agricultural Commissioner (crop reports)

Monterey County Assessor's Office (rancho plats)

Thank you for your continuing interest in and support of the Hornbeck Project.

Presented by Ruben Mendoza, Ph.D.
Department Chair
School of Social, Behavioral & Global Studies
California State University – Monterey Bay
rumendoza@csumb.edu
(831) 582-3760

Visit the **Hornbeck Collection – Historical Land Use in California** at:
<https://digitalcommons.csumb.edu/hornbeck/>
https://digitalcommons.csumb.edu/hornbeck/navigational_chart.pdf (Navigational Chart)