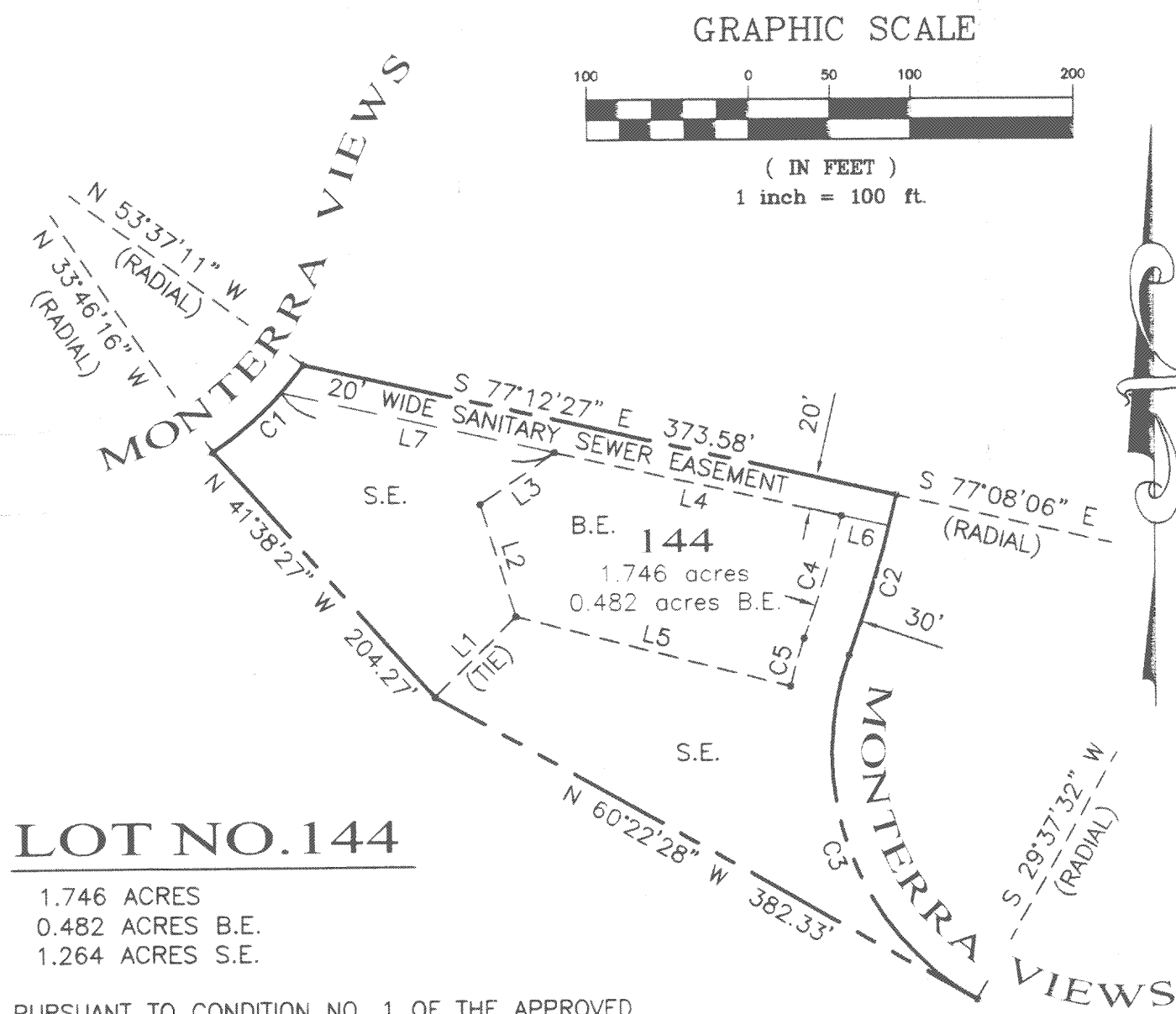


Exhibit F

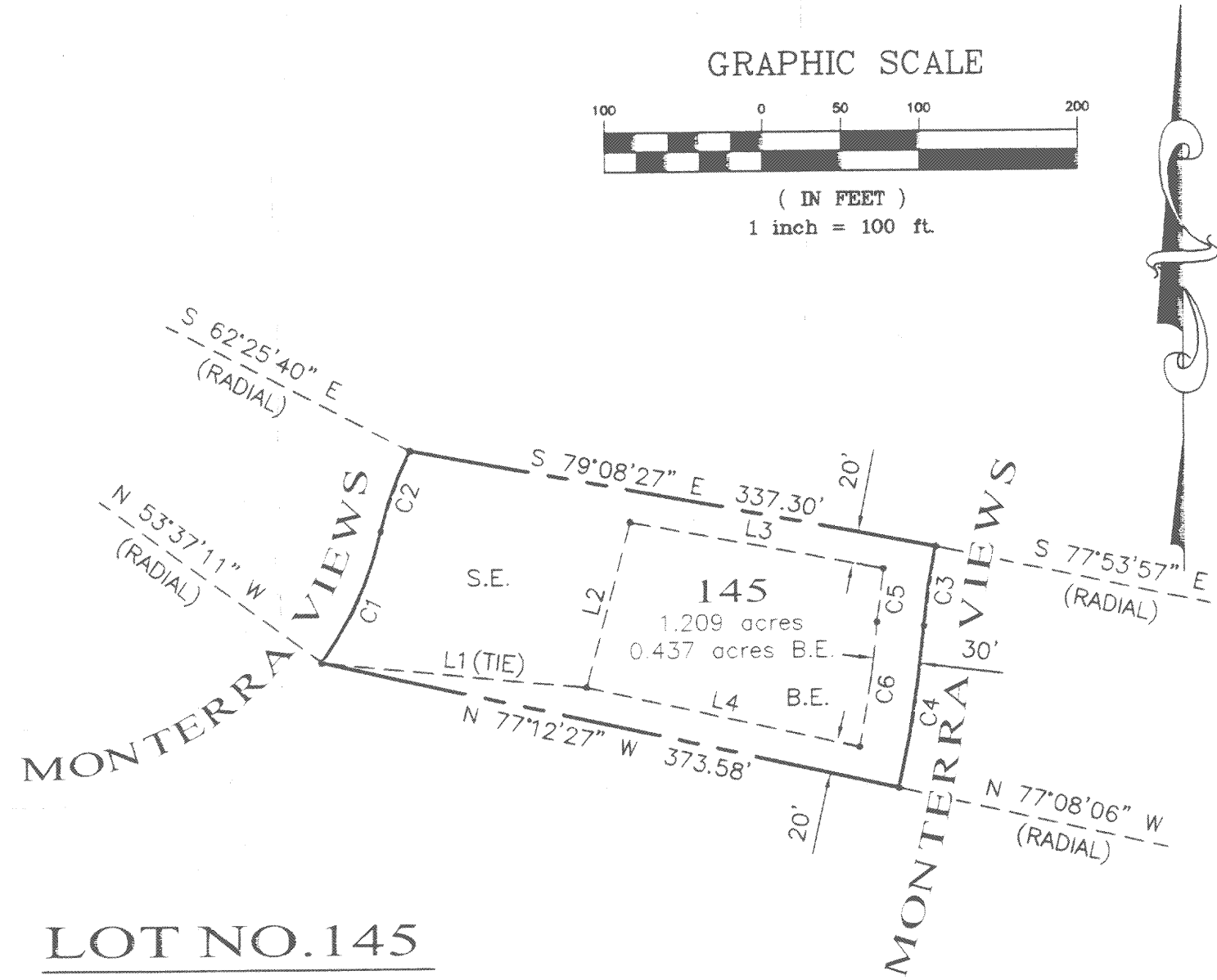
This page intentionally left blank.



PURSUANT TO CONDITION NO. 1 OF THE APPROVED TENTATIVE SUBDIVISION MAP (B/S RESOLUTION NUMBER 87-527), THIS BUILDING ENVELOPE REPRESENTS THE MAXIMUM POTENTIAL BUILDING AREA AS DIRECTED BY THE DIRECTOR OF PLANNING AND BUILDING INSPECTION, AFTER TAKING INTO ACCOUNT FRONT, REAR, AND SIDE YARD SETBACKS, 30% SLOPE AREAS, PUBLIC VIEWSHED, DRAINAGE EASEMENTS, AND EXISTING VEGETATION. ANY CONSTRUCTION WILL REQUIRE A SITE SPECIFIC EVALUATION AS RECOMMENDED IN THE PRELIMINARY GEOLOGICAL REPORT, MONTERRA RANCH SUBDIVISION BY ROGERS JOHNSON & ASSOCIATES, 22 DEC 1986. PAGES 64 & 65 OF THAT REPORT FURTHER DENOTE THAT A "GENERAL SETBACK OF 50 FEET FROM ALL SLOPES OVER 30% GRADE" WILL BE REQUIRED UNLESS THE SITE SPECIFIC INVESTIGATION SHOWS THAT A SMALLER SETBACK IS ACCEPTABLE.

LINE TABLE		
LINE	BEARING	LENGTH
L1	N 44°53'20" E	70.06
L2	N 16°56'47" W	72.56
L3	N 55°07'03" E	55.63
L4	S 77°12'27" E	181.26
L5	N 75°18'06" W	174.52
L6	N 77°12'27" W	30.01
L7	N 77°12'27" W	171.97

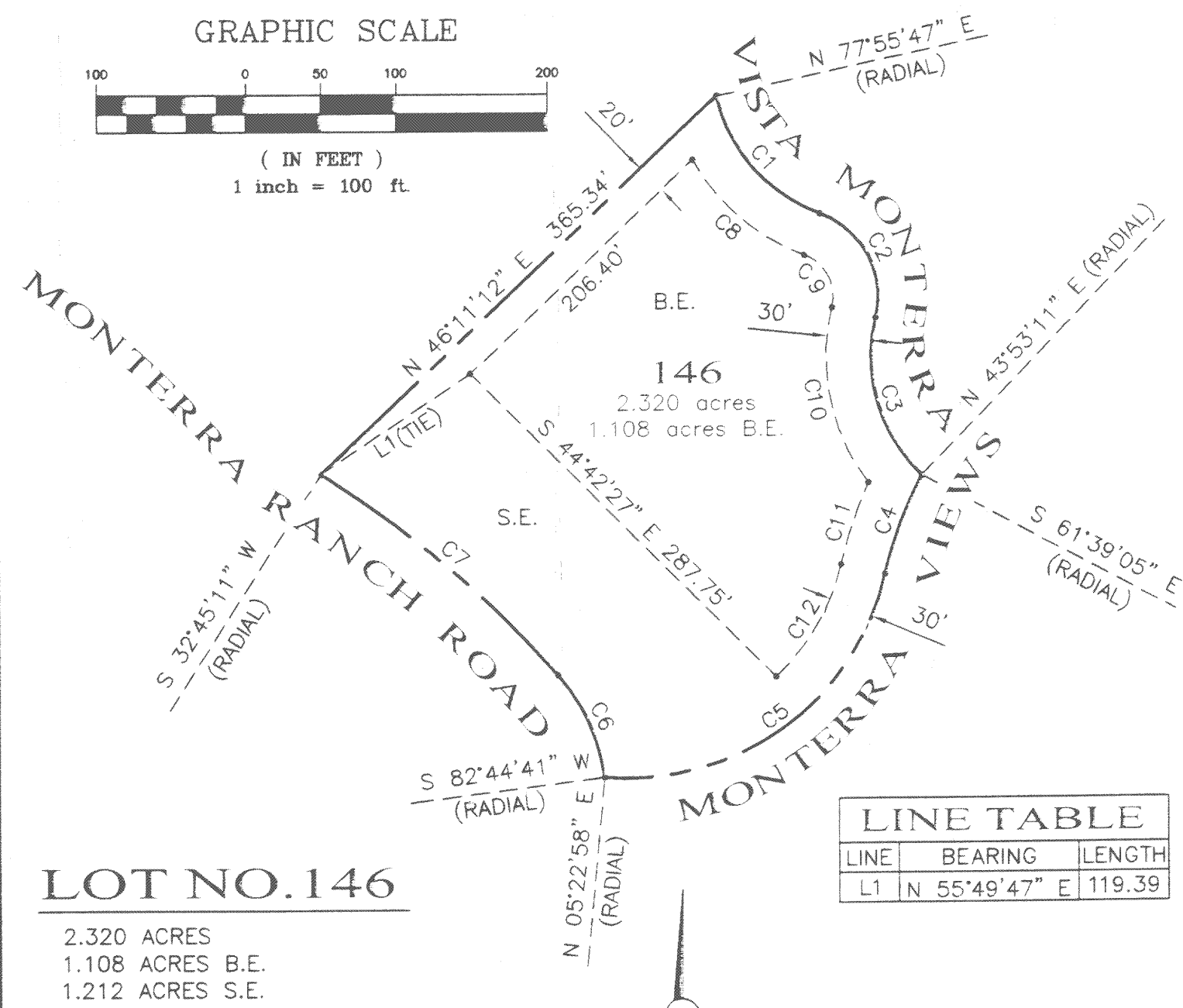
CURVE TABLE			
CURVE	DELTA	LENGTH	RADIUS
C1	19°50'55"	77.94	225.00
C2	7°39'03"	103.49	775.00
C3	80°53'25"	247.06	175.00
C4	6°06'35"	79.44	745.00
C5	8°37'46"	30.88	205.00



PURSUANT TO CONDITION NO. 1 OF THE APPROVED TENTATIVE SUBDIVISION MAP (B/S RESOLUTION NUMBER 87-527), THIS BUILDING ENVELOPE REPRESENTS THE MAXIMUM POTENTIAL BUILDING AREA AS DIRECTED BY THE DIRECTOR OF PLANNING AND BUILDING INSPECTION, AFTER TAKING INTO ACCOUNT FRONT, REAR, AND SIDE YARD SETBACKS, 30% SLOPE AREAS, PUBLIC VIEWSHED, DRAINAGE EASEMENTS, AND EXISTING VEGETATION. ANY CONSTRUCTION WILL REQUIRE A SITE SPECIFIC EVALUATION AS RECOMMENDED IN THE PRELIMINARY GEOLOGICAL REPORT, MONTERRA RANCH SUBDIVISION BY ROGERS JOHNSON & ASSOCIATES, 22 DEC 1986. PAGES 64 & 65 OF THAT REPORT FURTHER DENOTE THAT A "GENERAL SETBACK OF 50 FEET FROM ALL SLOPES OVER 30% GRADE" WILL BE REQUIRED UNLESS THE SITE SPECIFIC INVESTIGATION SHOWS THAT A SMALLER SETBACK IS ACCEPTABLE.

LINE TABLE		
LINE	BEARING	LENGTH
L1	S 84°04'55" E	167.09
L2	S 14°57'57" W	108.47
L3	N 79°08'27" W	163.83
L4	S 77°12'27" E	177.45

CURVE TABLE			
CURVE	DELTA	LENGTH	RADIUS
C1	23°24'46"	91.94	225.00
C2	14°36'18"	54.80	215.00
C3	6°55'33"	51.37	425.00
C4	7°41'24"	104.02	775.00
C5	4°19'31"	34.35	455.00
C6	6°09'16"	80.03	745.00



PURSUANT TO CONDITION NO. 1 OF THE APPROVED TENTATIVE SUBDIVISION MAP (B/S RESOLUTION NUMBER 87-527), THIS BUILDING ENVELOPE REPRESENTS THE MAXIMUM POTENTIAL BUILDING AREA AS DIRECTED BY THE DIRECTOR OF PLANNING AND BUILDING INSPECTION, AFTER TAKING INTO ACCOUNT FRONT, REAR, AND SIDE YARD SETBACKS, 30% SLOPE AREAS, PUBLIC VIEWSHED, DRAINAGE EASEMENTS, AND EXISTING VEGETATION. ANY CONSTRUCTION WILL REQUIRE A SITE SPECIFIC EVALUATION AS RECOMMENDED IN THE PRELIMINARY GEOLOGICAL REPORT, MONTERRA RANCH SUBDIVISION BY ROGERS JOHNSON & ASSOCIATES, 22 DEC 1986. PAGES 64 & 65 OF THAT REPORT FURTHER DENOTE THAT A "GENERAL SETBACK OF 50 FEET FROM ALL SLOPES OVER 30% GRADE" WILL BE REQUIRED UNLESS THE SITE SPECIFIC INVESTIGATION SHOWS THAT A SMALLER SETBACK IS ACCEPTABLE.

LINE TABLE		
LINE	BEARING	LENGTH
L1	N 55°49'47" E	119.39

CURVE TABLE			
CURVE	DELTA	LENGTH	RADIUS
C1	57°00'35"	109.45	110.00
C2	83°00'22"	86.92	60.00
C3	60°02'23"	115.27	110.00
C4	15°22'52"	71.14	265.00
C5	82°24'55"	251.72	175.00
C6	33°40'57"	76.42	130.00
C7	16°18'34"	207.80	730.00
C8	40°57'42"	100.09	140.00
C9	83°00'22"	43.46	30.00
C10	50°47'02"	124.09	140.00
C11	11°16'36"	58.06	295.00
C12	34°45'51"	87.98	145.00

TRACT NO. 1419
MONTERRA RANCH, PHASE 6
A PRIVATE ROAD SUBDIVISION
IN THE COUNTY OF MONTEREY, STATE OF CALIFORNIA
SHOWING THE SUBDIVISION OF A PORTION OF THE 157.70 ACRE
ADJ-LOT 44 REMAINDER AS SHOWN ON THAT MAP FILED IN
VOLUME 22, CITIES AND TOWNS, PAGE 39, OFFICIAL RECORDS OF
MONTEREY COUNTY, CALIFORNIA
JANUARY 2004

PREPARED BY:
WWD CORPORATION
2801 MONTEREY-SALINAS HIGHWAY
MONTEREY, CALIFORNIA 93940
(831) 655-2723
FAX: (831) 655-3425

PREPARED FOR:
MONTERRA RANCH
PROPERTIES, LLC
C/O CARMEL DEVELOPMENT COMPANY
POST OFFICE BOX 450
CARMEL, CALIFORNIA 93921

SHEET 6 OF 9

This page intentionally left blank