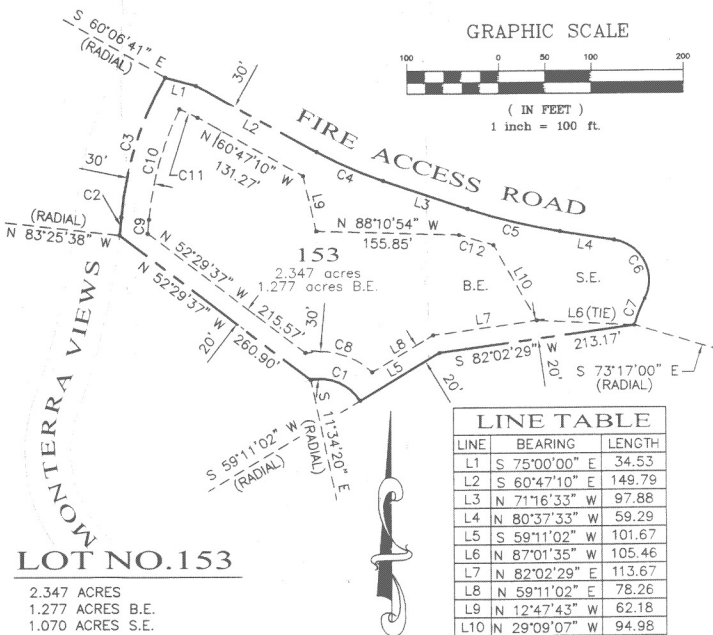


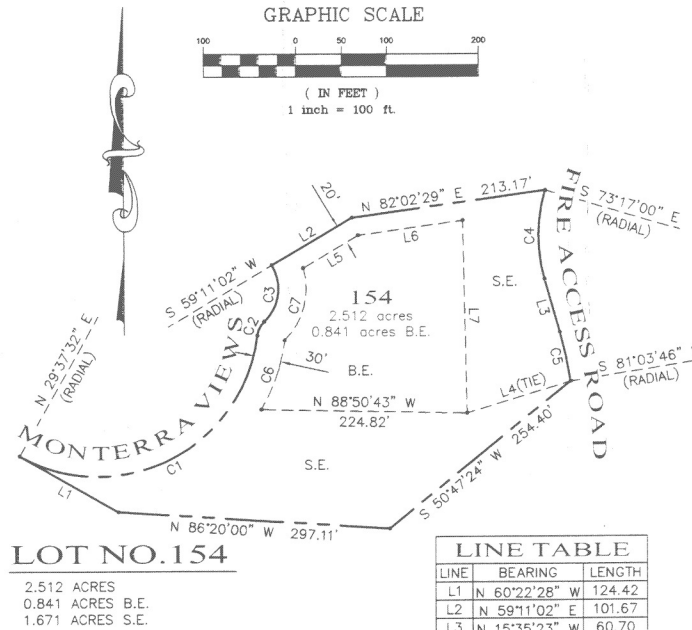
# Exhibit E

This page intentionally left blank.



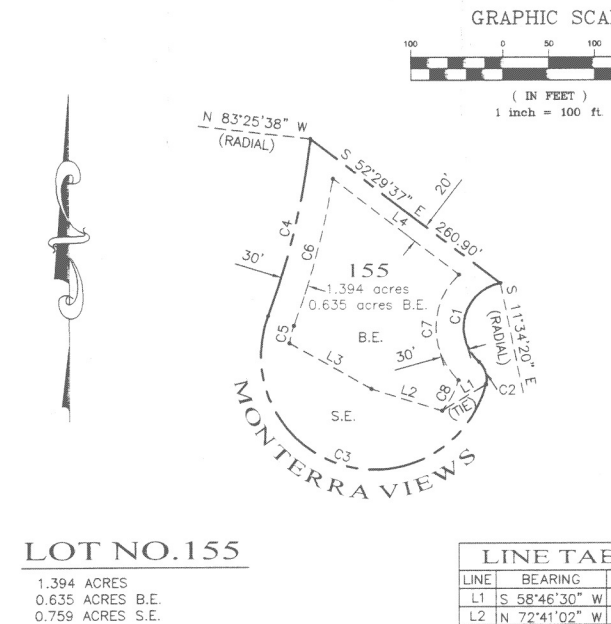
PURSUANT TO CONDITION NO. 1 OF THE APPROVED TENTATIVE SUBDIVISION MAP (B/S RESOLUTION NUMBER 87-527), THIS BUILDING ENVELOPE REPRESENTS THE MAXIMUM POTENTIAL BUILDING AREA AS DIRECTED BY THE DIRECTOR OF PLANNING AND BUILDING INSPECTION, AFTER TAKING INTO ACCOUNT FRONT, REAR, AND SIDE YARD SETBACKS, 30% SLOPE AREAS, PUBLIC VIEWSHED, DRAINAGE EASEMENTS, AND EXISTING VEGETATION. ANY CONSTRUCTION WILL REQUIRE A SITE SPECIFIC EVALUATION AS RECOMMENDED IN THE PRELIMINARY GEOLOGICAL REPORT, MONTERRA RANCH SUBDIVISION BY ROGERS JOHNSON & ASSOCIATES, 22 DEC 1986. PAGES 64 & 65 OF THAT REPORT FURTHER DENOTE THAT A "GENERAL SETBACK OF 50 FEET FROM ALL SLOPES OVER 30% GRADE" WILL BE REQUIRED UNLESS THE SITE SPECIFIC INVESTIGATION SHOWS THAT A SMALLER SETBACK IS ACCEPTABLE.

CURVE	DELTA	LENGTH	RADIUS
C1	70°45'22"	61.75	50.00
C2	1°23'52"	20.13	825.00
C3	24°42'49"	161.75	375.00
C4	10°29'23"	78.72	430.00
C5	9°21'00"	102.81	630.00
C6	107°33'10"	84.47	45.00
C7	10°12'38"	31.19	175.00
C8	55°56'48"	78.12	80.00
C9	1°02'22"	15.51	855.00
C10	20°55'48"	126.03	345.00
C11	8°31'54"	21.59	145.00
C12	3°23'42"	39.11	660.00



PURSUANT TO CONDITION NO. 1 OF THE APPROVED TENTATIVE SUBDIVISION MAP (B/S RESOLUTION NUMBER 87-527), THIS BUILDING ENVELOPE REPRESENTS THE MAXIMUM POTENTIAL BUILDING AREA AS DIRECTED BY THE DIRECTOR OF PLANNING AND BUILDING INSPECTION, AFTER TAKING INTO ACCOUNT FRONT, REAR, AND SIDE YARD SETBACKS, 30% SLOPE AREAS, PUBLIC VIEWSHED, DRAINAGE EASEMENTS, AND EXISTING VEGETATION. ANY CONSTRUCTION WILL REQUIRE A SITE SPECIFIC EVALUATION AS RECOMMENDED IN THE PRELIMINARY GEOLOGICAL REPORT, MONTERRA RANCH SUBDIVISION BY ROGERS JOHNSON & ASSOCIATES, 22 DEC 1986. PAGES 64 & 65 OF THAT REPORT FURTHER DENOTE THAT A "GENERAL SETBACK OF 50 FEET FROM ALL SLOPES OVER 30% GRADE" WILL BE REQUIRED UNLESS THE SITE SPECIFIC INVESTIGATION SHOWS THAT A SMALLER SETBACK IS ACCEPTABLE.

CURVE	DELTA	LENGTH	RADIUS
C1	112°51'11"	344.69	175.00
C2	39°34'16"	17.27	25.00
C3	77°09'36"	67.33	50.00
C4	32°18'23"	98.67	175.00
C5	6°39'09"	55.15	475.00
C6	22°29'20"	80.46	205.00
C7	61°23'06"	85.71	80.00



PURSUANT TO CONDITION NO. 1 OF THE APPROVED TENTATIVE SUBDIVISION MAP (B/S RESOLUTION NUMBER 87-527), THIS BUILDING ENVELOPE REPRESENTS THE MAXIMUM POTENTIAL BUILDING AREA AS DIRECTED BY THE DIRECTOR OF PLANNING AND BUILDING INSPECTION, AFTER TAKING INTO ACCOUNT FRONT, REAR, AND SIDE YARD SETBACKS, 30% SLOPE AREAS, PUBLIC VIEWSHED, DRAINAGE EASEMENTS, AND EXISTING VEGETATION. ANY CONSTRUCTION WILL REQUIRE A SITE SPECIFIC EVALUATION AS RECOMMENDED IN THE PRELIMINARY GEOLOGICAL REPORT, MONTERRA RANCH SUBDIVISION BY ROGERS JOHNSON & ASSOCIATES, 22 DEC 1986. PAGES 64 & 65 OF THAT REPORT FURTHER DENOTE THAT A "GENERAL SETBACK OF 50 FEET FROM ALL SLOPES OVER 30% GRADE" WILL BE REQUIRED UNLESS THE SITE SPECIFIC INVESTIGATION SHOWS THAT A SMALLER SETBACK IS ACCEPTABLE.

CURVE	DELTA	LENGTH
C1	126°33'52"	110.45
C2	62°43'13"	27.37
C3	185°55'56"	405.64
C4	13°56'35"	200.77
C5	11°53'39"	19.72
C6	11°12'49"	167.34
C7	92°34'19"	129.25
C8	23°02'49"	38.21

TRACT NO. 149  
MONTERRA RANCH, PHASE  
A PRIVATE ROAD SUBDIVISION  
IN THE COUNTY OF MONTEREY, STATE OF CALIFORNIA  
SHOWING THE SUBDIVISION OF A PORTION OF THE 151  
ADJ-LOT 44 REMAINDER AS SHOWN ON THAT MAP  
VOLUME 22, CITIES AND TOWNS, PAGE 39, OFFICIAL RECORD  
MONTEREY COUNTY, CALIFORNIA

JANUARY 2004

PREPARED BY:

**WWD CORPORATION**

2801 MONTEREY-SALINAS HIGHWAY  
MONTEREY, CALIFORNIA 93940  
(831) 655-2723  
FAX: (831) 655-3425

PREPARED FOR:

MONTERRA  
PROPERTIES  
C/O CARMEL DEVELOPMENT  
POST OFFICE BOX  
CARMEL, CALIFORNIA

SHEET 9

This page intentionally left blank