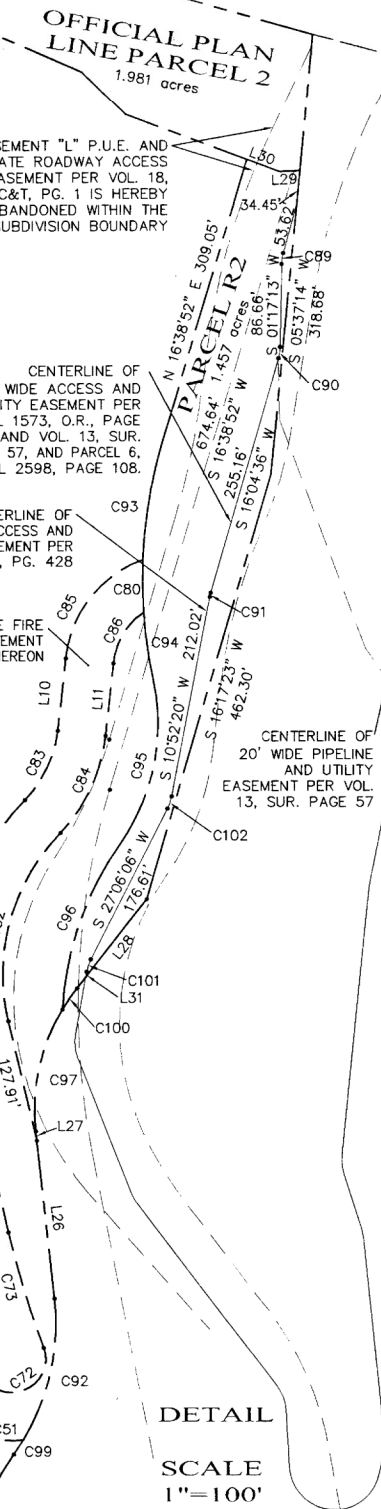


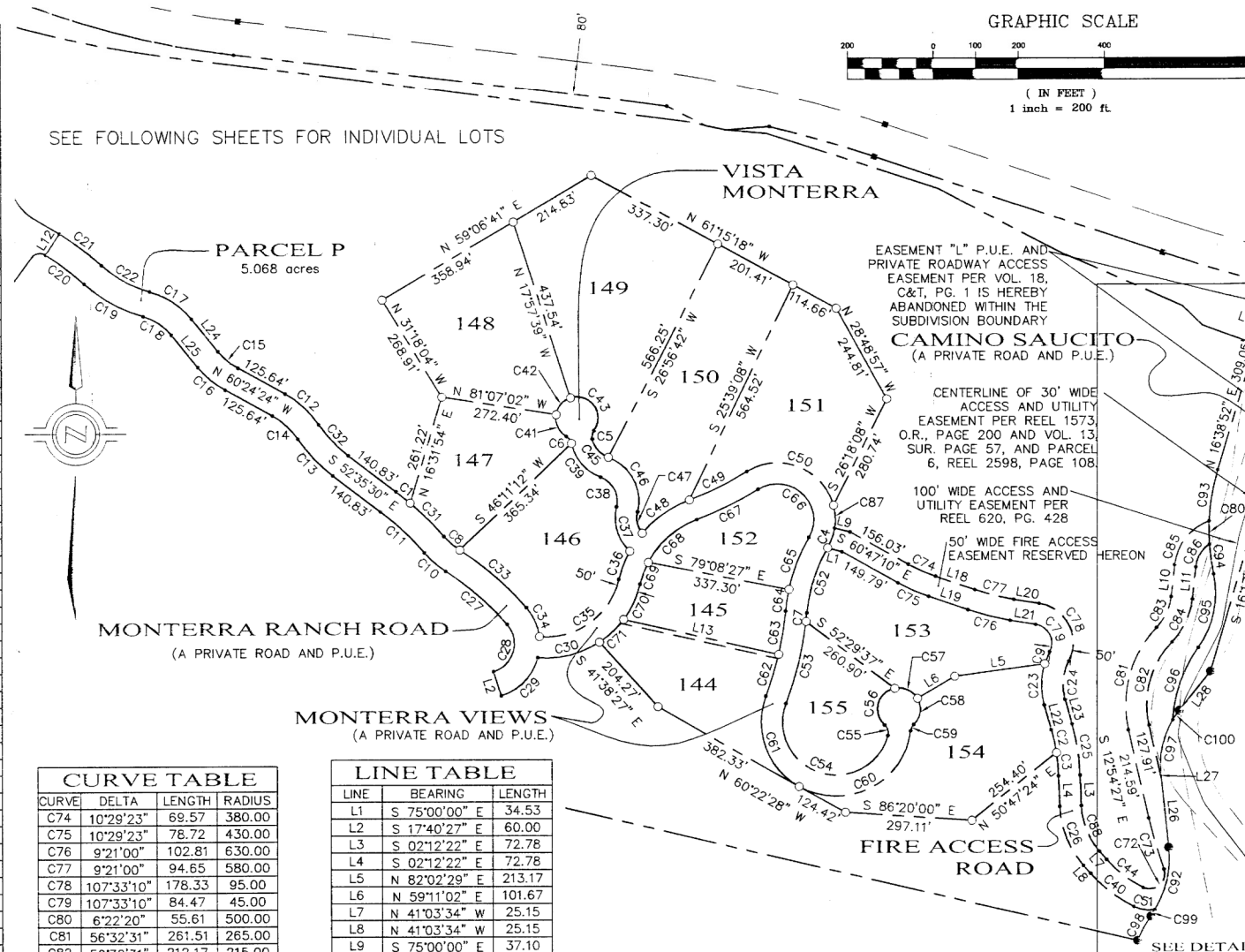
# Exhibit G

This page intentionally left blank.



CURVE	DELTA	LENGTH	RADIUS
C1	3°21'33"	42.80	730.00
C2	6°39'09"	55.15	475.00
C3	6°43'52"	55.80	475.00
C4	21°24'06"	50.43	135.00
C5	48°30'56"	21.17	25.00
C6	48°06'18"	20.99	25.00
C7	1°23'52"	20.13	825.00
C8	16°48'45"	49.88	170.00
C9	10°12'38"	31.19	175.00
C10	16°48'45"	67.49	230.00
C11	12°09'26"	142.16	670.00
C12	26°01'20"	109.00	240.00
C13	18°12'26"	120.75	380.00
C14	26°01'20"	81.75	180.00
C15	21°43'16"	60.66	160.00
C16	21°43'16"	83.40	220.00
C17	35°45'53"	118.60	190.00
C18	35°45'53"	81.15	130.00
C19	26°48'28"	159.08	340.00
C20	9°45'54"	114.19	670.00
C21	9°45'54"	124.42	730.00
C22	26°48'28"	131.01	280.00
C23	32°18'23"	98.67	175.00
C24	42°31'00"	92.76	125.00
C25	13°23'01"	122.63	525.00
C26	38°51'12"	152.58	225.00
C27	16°18'34"	190.72	670.00
C28	113°15'48"	138.38	70.00
C29	57°23'59"	130.24	130.00
C30	38°48'36"	152.41	225.00
C31	8°47'54"	112.10	730.00
C32	18°12'26"	101.69	320.00
C33	16°18'34"	207.80	730.00
C34	33°40'57"	76.42	130.00
C35	82°24'55"	251.72	175.00
C36	15°22'52"	71.14	265.00
C37	60°02'23"	115.27	110.00
C38	83°00'22"	86.92	60.00
C39	57°00'35"	109.45	110.00
C40	22°54'39"	129.96	325.00
C41	69°03'29"	60.26	50.00
C42	63°18'24"	55.25	50.00
C43	144°00'52"	125.68	50.00
C44	22°54'39"	109.96	275.00
C45	56°46'05"	59.45	60.00
C46	83°00'22"	159.36	110.00
C47	51°29'51"	53.94	60.01
C48	29°45'34"	137.64	265.00
C49	11°16'24"	152.49	775.00
C50	107°16'58"	252.78	135.00
C51	33°58'36"	50.41	85.00
C52	24°42'49"	161.75	375.00
C53	13°56'35"	200.77	825.00
C54	185°55'56"	405.64	125.00
C55	62°43'13"	27.37	25.00
C56	126°33'52"	110.45	50.00
C57	70°45'22"	61.75	50.00
C58	77°09'36"	67.33	50.00
C59	39°34'16"	17.27	25.00
C60	112°51'11"	344.69	175.00
C61	80°53'25"	247.06	175.00
C62	7°39'03"	103.49	775.00
C63	7°41'24"	104.02	775.00
C64	6°55'33"	51.37	425.00
C65	17°47'16"	131.94	425.00
C66	151°54'51"	225.37	85.00
C67	11°16'24"	162.32	825.00
C68	41°40'31"	156.38	215.00
C69	14°36'18"	54.80	215.00
C70	23°24'46"	91.94	225.00
C71	19°50'55"	77.94	225.00
C72	135°58'19"	83.06	35.00
C73	7°02'05"	125.85	1025.00

TABLES ARE FOR LABELS ON THIS SHEET ONLY

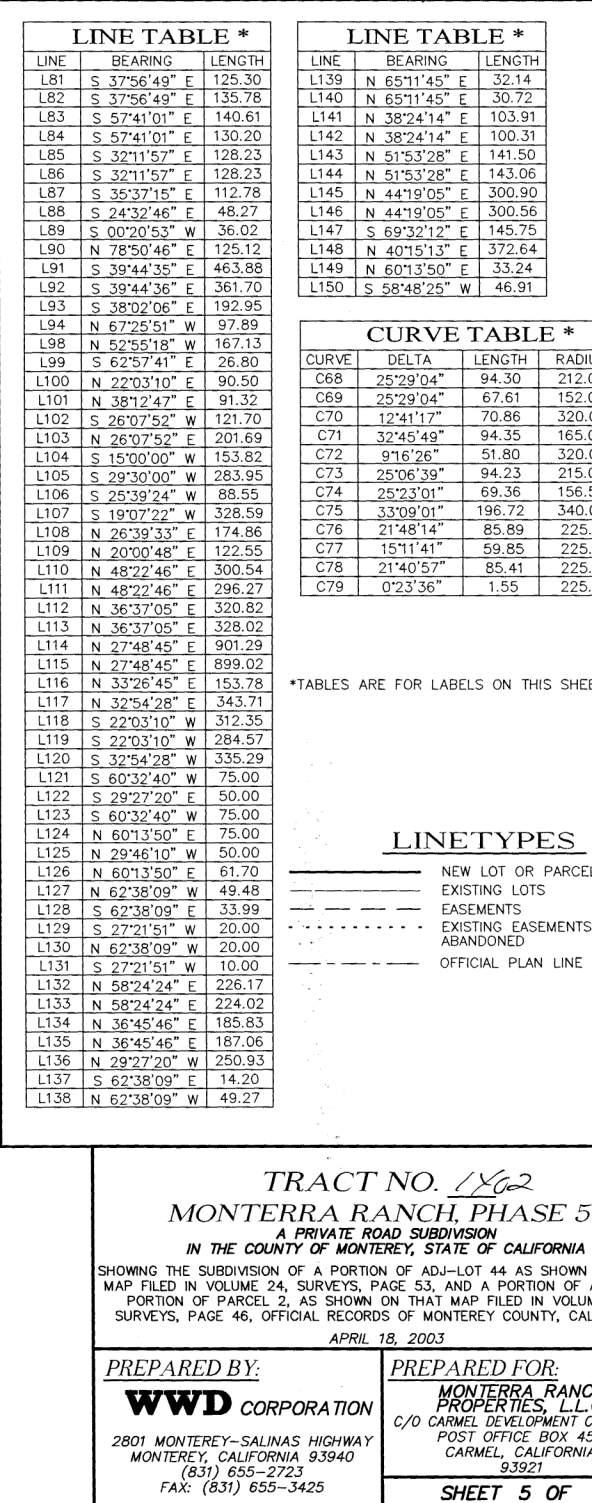


CURVE	DELTA	LENGTH	RADIUS
C74	10°29'23"	69.57	380.00
C75	10°29'23"	78.72	430.00
C76	9°21'00"	102.81	630.00
C77	9°21'00"	94.65	580.00
C78	10°7'33'10"	178.33	95.00
C79	10°7'33'10"	84.47	45.00
C80	6°22'20"	55.61	500.00
C81	56°32'31"	261.51	265.00
C82	56°32'31"	212.17	215.00
C83	37°13'34"	81.21	125.00
C84	37°13'34"	113.70	175.00
C85	73°56'21"	161.31	125.00
C86	52°36'26"	68.86	75.00
C87	23°13'47"	54.73	135.00
C88	38°51'12"	118.67	175.00
C89	13°56'43"	11.56	47.50
C90	14°47'23"	12.26	47.50
C91	5°12'16"	4.31	47.50
C92	36°43'18"	153.82	240.00
C93	14°10'57"	123.76	500.00
C94	8°06'25"	70.75	500.00
C95	47°19'43"	181.73	220.00
C96	31°55'41"	183.89	330.00
C97	36°49'19"	132.29	205.84
C98	13°41'17"	65.70	275.00
C99	4°22'27"	18.32	240.00
C100	7°26'52"	26.76	205.84
C101	16°42'05"	13.85	47.50
C102	16°13'46"	13.45	47.50

LINE	BEARING	LENGTH
L1	S 75°00'00" E	34.53
L2	S 17°40'27" E	60.00
L3	S 02°12'22" E	72.78
L4	S 02°12'22" E	72.78
L5	N 82°02'29" E	213.17
L6	N 59°11'02" E	101.67
L7	N 41°03'34" W	25.15
L8	N 41°03'34" W	25.15
L9	S 75°00'00" E	37.10
L10	S 06°24'30" W	75.86
L11	S 06°24'30" W	75.86
L12	N 32°35'33" E	60.00
L13	N 77°12'27" W	373.58
L14	N 74°48'06" W	4.51
L15	S 74°48'06" E	17.46
L16	S 74°48'06" E	7.96
L17	N 30°49'01" E	13.09
L18	N 71°16'33" W	97.88
L19	N 71°16'33" W	97.88
L20	N 80°37'33" W	59.29
L21	N 80°37'33" W	59.29
L22	N 15°35'23" W	60.70
L23	N 15°35'23" W	60.70
L24	S 38°41'08" E	98.57
L25	S 38°41'08" E	98.57
L26	N 06°01'03" W	165.63
L27	N 06°01'03" W	9.77
L28	N 38°15'08" E	118.33
L29	S 87°17'18" W	21.07
L30	N 69°18'02" W	36.24
L31	S 10°24'01" W	5.89

PREPARED BY:  
**WWD CORPORATION**  
2801 MONTEREY-SALINAS HIGHWAY  
MONTEREY, CALIFORNIA 93940  
(831) 655-2723  
FAX: (831) 655-3425

PREPARED FOR:  
**MONTEREY RANCH PROPERTIES, INC.**  
C/O CARMEL DEVELOPMENT  
POST OFFICE BOX 100  
CARMEL, CALIFORNIA 93921  
SHEET 5 OF 5

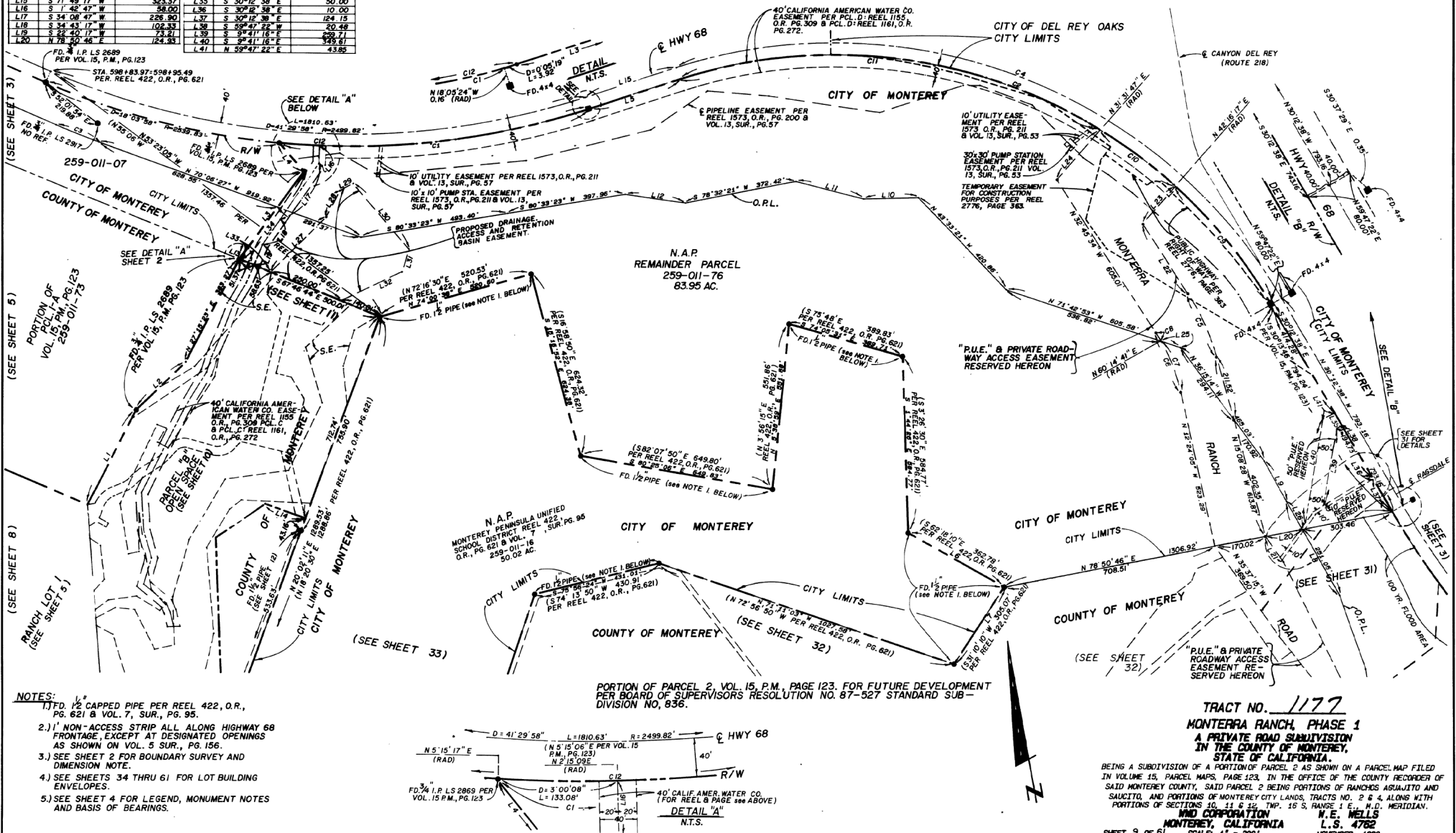


LINE	BEARING	DISTANCE	LINE	BEARING	DISTANCE
L1	N 27° 22' 15" E	324.70	L21	N 35° 48' 21" W	102.34
L2	N 45° 32' 33" E	228.42	L22	N 32° 45' 34" W	275.79
L3	N 35° 43' 10" E	361.19	L23	N 40° 50' 47" E	184.10
L4	N 40° 50' 47" E	124.80	L24	N 40° 50' 47" E	218.29
L5	N 71° 49' 17" E	323.37	L25	S 71° 42' 33" E	68.76
L6	S 60° 36' 37" E	362.80	L26	N 29° 26' 43" W	104.83
L7	S 35° 31' 43" W	308.18	L27	N 44° 29' 04" E	253.50
L8	N 29° 26' 43" W	353.98	L28	N 27° 23' 49" E	99.50
L9	N 22° 03' 16" W	154.45	L29	N 60° 12' 26" E	51.00
L10	S 68° 24' 32" W	180.07	L30	S 40° 57' 17" E	286.30
L11	N 75° 47' 03" W	232.11	L31	S 15° 15' 56" W	77.50
L12	N 81° 59' 18" W	202.70	L32	S 64° 03' 44" W	224.00
L13	N 35° 57' 48" E	140.25	L33	S 67° 48' 44" E	110.00
L14	N 69° 56' 45" W	323.37	L34	S 35° 57' 48" E	361.88
L15	S 71° 49' 17" W	323.37	L35	S 30° 12' 38" E	50.00
L16	S 1° 42' 47" W	58.00	L36	S 30° 12' 38" E	10.00
L17	S 34° 08' 47" W	228.90	L37	S 30° 12' 38" E	124.15
L18	S 34° 43' 17" W	102.33	L38	S 59° 47' 22" W	20.49
L19	S 24° 40' 17" W	124.31	L39	S 59° 47' 22" W	20.49
L20	S 24° 40' 17" W	124.31	L40	S 59° 47' 22" W	20.49
			L41	N 59° 47' 22" E	43.85

CURVE	ARC	DELTA	RADIUS
C1	103.78	23° 28' 00"	2530.83
C2	228.77	77° 58' 00"	1889.89
C3	183.36	3° 24' 21"	2880.00
C4	233.51	77° 58' 00"	1889.89
C5	233.70	17° 37' 06"	760.00
C6	233.19	20° 21' 28"	600.00
C7	181.73	17° 31' 13"	600.00
C8	31.46	3° 00' 15"	600.00
C9	307.51	17° 31' 05"	1659.89
C10	311.19	10° 44' 50"	1659.89
C11	1440.08	49° 42' 50"	1659.89
C12	1839.61	41° 29' 58"	2539.83

(D=77° 57' 22" R=1659.9' L=2258.77' PER VOL.15, P.M., PG.123)

(D=41° 30' 20" R=2539.85' L=1839.89' PER VOL.15, P.M., PG.123)



- NOTES:
- 1) FD. 1/2 CAPPED PIPE PER REEL 422, O.R., PG. 621 & VOL. 7, SUR., PG. 95.
  - 2) 1' NON-ACCESS STRIP ALL ALONG HIGHWAY 68 FRONTAGE, EXCEPT AT DESIGNATED OPENINGS AS SHOWN ON VOL. 5, SUR., PG. 156.
  - 3) SEE SHEET 2 FOR BOUNDARY SURVEY AND DIMENSION NOTE.
  - 4) SEE SHEETS 34 THRU 61 FOR LOT BUILDING ENVELOPES.
  - 5) SEE SHEET 4 FOR LEGEND, MONUMENT NOTES AND BASIS OF BEARINGS.

TRACT NO. 1177  
**MONTEREA RANCH, PHASE 1**  
**A PRIVATE ROAD SUBDIVISION**  
**IN THE COUNTY OF MONTEREY,**  
**STATE OF CALIFORNIA.**  
 BEING A SUBDIVISION OF A PORTION OF PARCEL 2 AS SHOWN ON A PARCEL MAP FILED IN VOLUME 15, PARCEL MAPS, PAGE 123, IN THE OFFICE OF THE COUNTY RECORDER OF SAID MONTEREY COUNTY, SAID PARCEL 2 BEING PORTIONS OF RANCHES ARJAJITO AND SAUCITO, AND PORTIONS OF MONTEREY CITY LANDS, TRACTS NO. 2 & 4, ALONG WITH PORTIONS OF SECTIONS 10, 11 & 14, TWP. 15 S., RANGE 1 E., M.D. MERIDIAN.  
**W.D. CORPORATION**  
**MONTEREY, CALIFORNIA**  
 SCALE 1" = 200'  
**N.E. NELLIS**  
**L.S. 4782**  
**NOVEMBER, 1989**

This page intentionally left blank