



# Carmel Lagoon SRPS/EPB Project Update

Capital Improvement Committee  
July 9, 2018

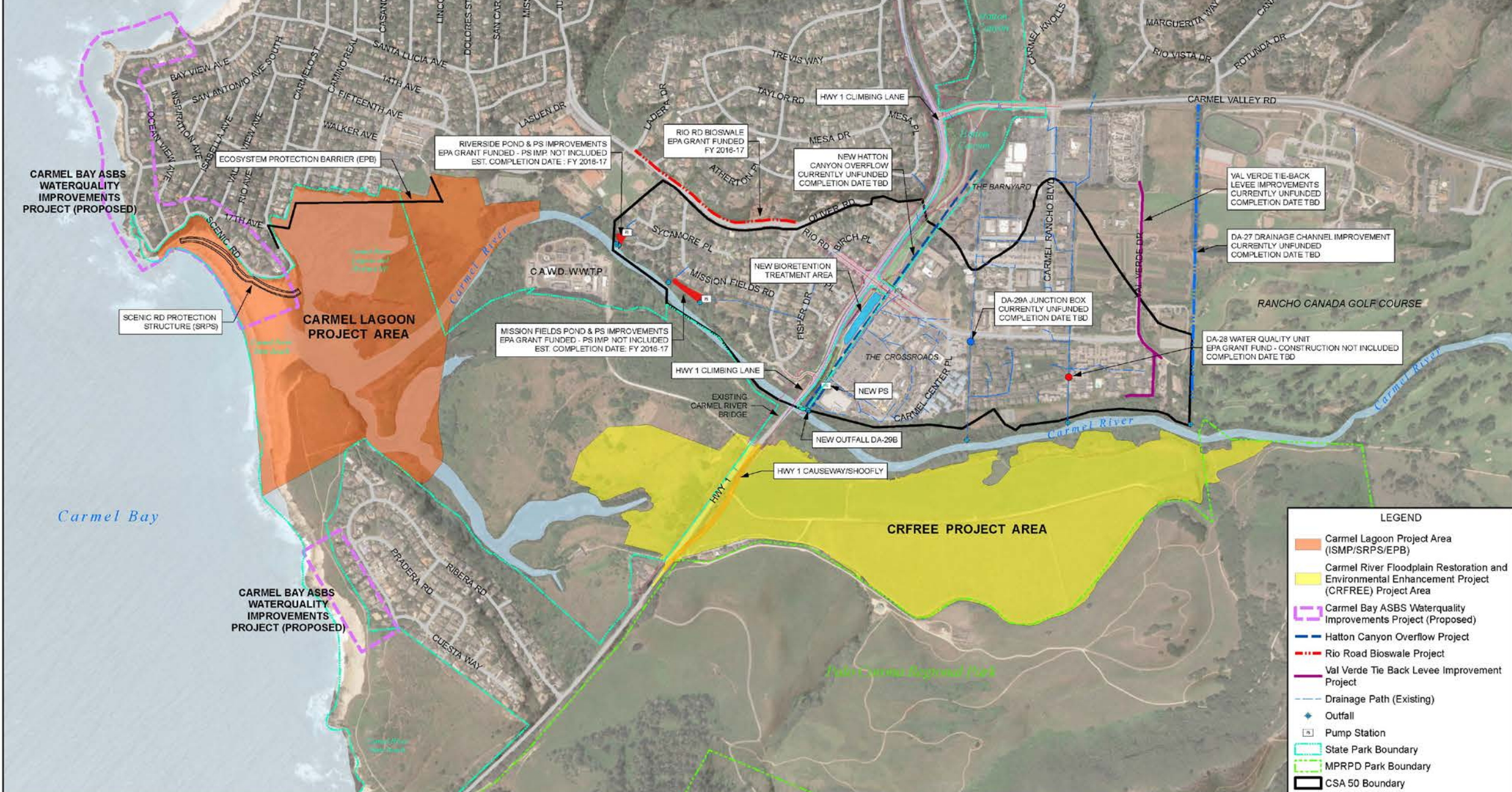
Melanie Beretti  
RMA Property Administration/Special Programs Manager



# Overview

- Project Description
- Background
- Status Update
- Next steps





# COUNTY PROJECT OVERVIEW AT LOWER CARMEL RIVER AREA

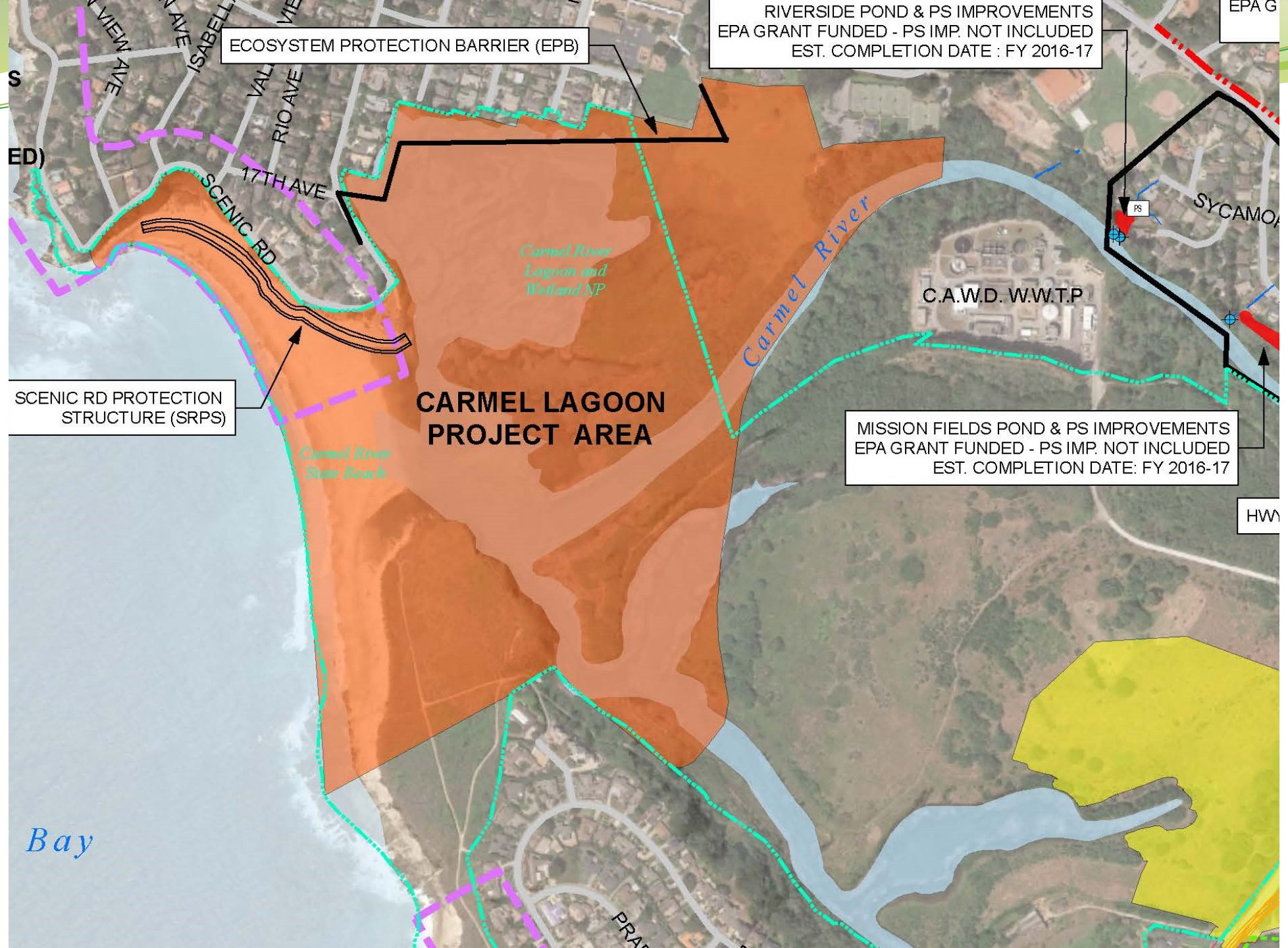


COUNTY OF MONTEREY  
RESOURCE MANAGEMENT AGENCY  
MAP PREPARED: 9/26/16  
IMAGERY DATE: 4/13/15  
THIS MAP SUPERSEDES AND REPLACES ANY PREVIOUS VERSION.



# Project Components

- **Scenic Road Protection Structure (SRPS)** – a wall to protect Scenic Road from erosive forces caused when lagoon open and is flowing to Carmel Bay/Ocean;
- **Ecosystem Protective Barrier (EPB)** – a wall to provide current flood protection with natural sandbar function; and
- **Interim Sandbar Management Plan (ISMP)** – various management activities to reduce flood risk, including sandbar management, until structural components are complete.



# History

- **Since Early 1900's**- History of agriculture operations, mechanical breaching of sandbar, and subsequent development
- **1930's** – State Route 1 from Carmel to San Simeon opened and Carmel Area Wastewater District treatment plant constructed
- **1953** – Carmel River State Beach established
- **1970's** – CEQA and CCC
- **1980's** – Monterey County Floodplain Regulations (MCC 16.16)
- **1995** –Carmel River Lagoon and Wetlands Natural Preserve established
- **1995 & 1998** – Significant flood events in lower Carmel River



# Background

- **1970's to 2011** - Emergency sandbar management carried out first by State Parks, then by County under direction from WRA
- **1992** – USACE and NOAA decide sandbar management does not qualify as emergency action
- **2005 - 2007** – Various agencies come together to develop long-term solution and do baseline studies
- **2010** – County develops the EPB/SRPS w/ ISMP project as an alternative to issuance of Jeopardy Opinion by NOAA Fisheries (to WRA application)
- **2013** – County enters into MOU with USACE and NMFS to demonstrate commitment to long-term solution

# Background

- Per the 2013 MOU and as a condition of receiving permits for sandbar management, the RMA continues advance the EPB/SRPS project through the planning stages.
  - 30% Designs for EPB and three SRPS alternatives
  - Draft EIR Public Review Dec 2, 2016 – Jan 31, 2017
    - Considers Alternative Projects include SRPS and ISMP with: 1) EPB; 2) Delayed EPB; and 3) No EPB
    - Significant public comment
    - Identified additional technical studies for SRPS



# Status - EPB

- Technical, institutional and policy challenges identified through comments to DEIR related to EPB
  - State Parks - Carmel Lagoon State Natural Preserve
  - Private property/Public right-of-way
  - CAWD concerns
  - Regulatory – California Coastal Commission

# Status - SRPS

- Additional technical studies for:
  - Coastal processes
  - Sediment transport
  - Additional design & geotechnical recommendations
- NOAA Fisheries would consider SRPS with on-going species-friendly sandbar management
- State Parks opposes SRPS on State-owned lands
  - Would consider viable like-for-like land swap
  - Full-Height wall

# Status - ISMP

- County obtained all permits to conduct sandbar management for the 2017-2018 rainy season
  - Some conditioned on advancing long-term solution
- Managed sandbar on January 8<sup>th</sup> and 20<sup>th</sup>
- Summer closure naturally in June
- County in the process of obtaining permits for 2018-2019 season



# Status - Financial

- \$779,099 spent from FY13 -FY17 on planning and analyzing project
- Remaining activities and associated costs:
  - Technical studies \$ 360,470
  - Recirculate and Final EIR \$ 160,000
  - Design \$ 500,000
  - Permitting \$ 190,000
  - Construction \$ 15,500,000
- Total estimated remaining costs: \$ 16,710,470
- \$81,833 spend to date for FY18 sandbar management

# Status - Financial

- General Fund augmentation request for FY2018-19 not supported in Recommended Budget
  - Technical Studies
- County's Strategic Grant Program
  - Identify and apply for est \$15.5 million to complete planning, construction and post construction monitoring

# Options for Consideration

- **Option 1** - Continue long-term project and conduct full-height SRPS technical study; complete EIR review process
- **Option 2** - Continue long-term project and conduct full-height SRPS technical study; explore EPB alternatives from EIR



# Options for Consideration

- **Option 3** – Discontinue long-term project (SRPS/EPB) and sandbar management; continue sand bag flood protection
- **Option 4** - Discontinue long-term project and sandbar management
- **Option 5** - Discontinue long-term project and pursue options to elevate private homes out of the floodplain
- Other alternatives?

# Next Steps

- Recommendation to Board from Capital Improvement Committee