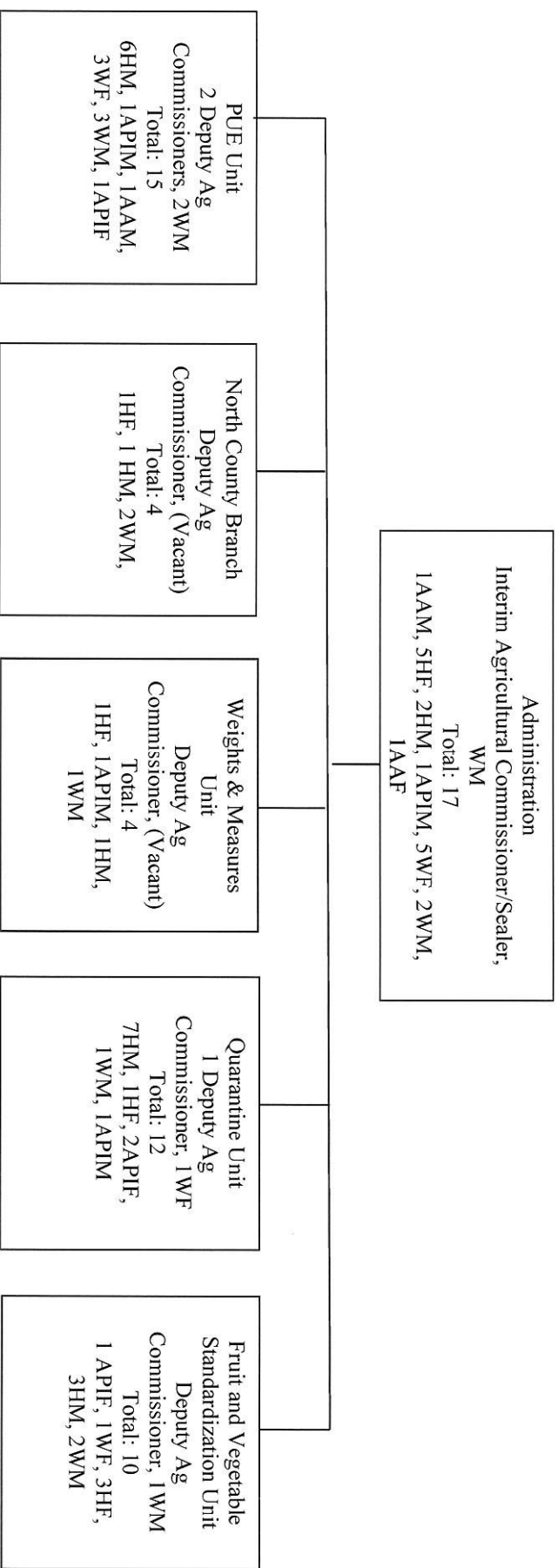


Section 2

Organizational Profile Agricultural Commissioner's Office

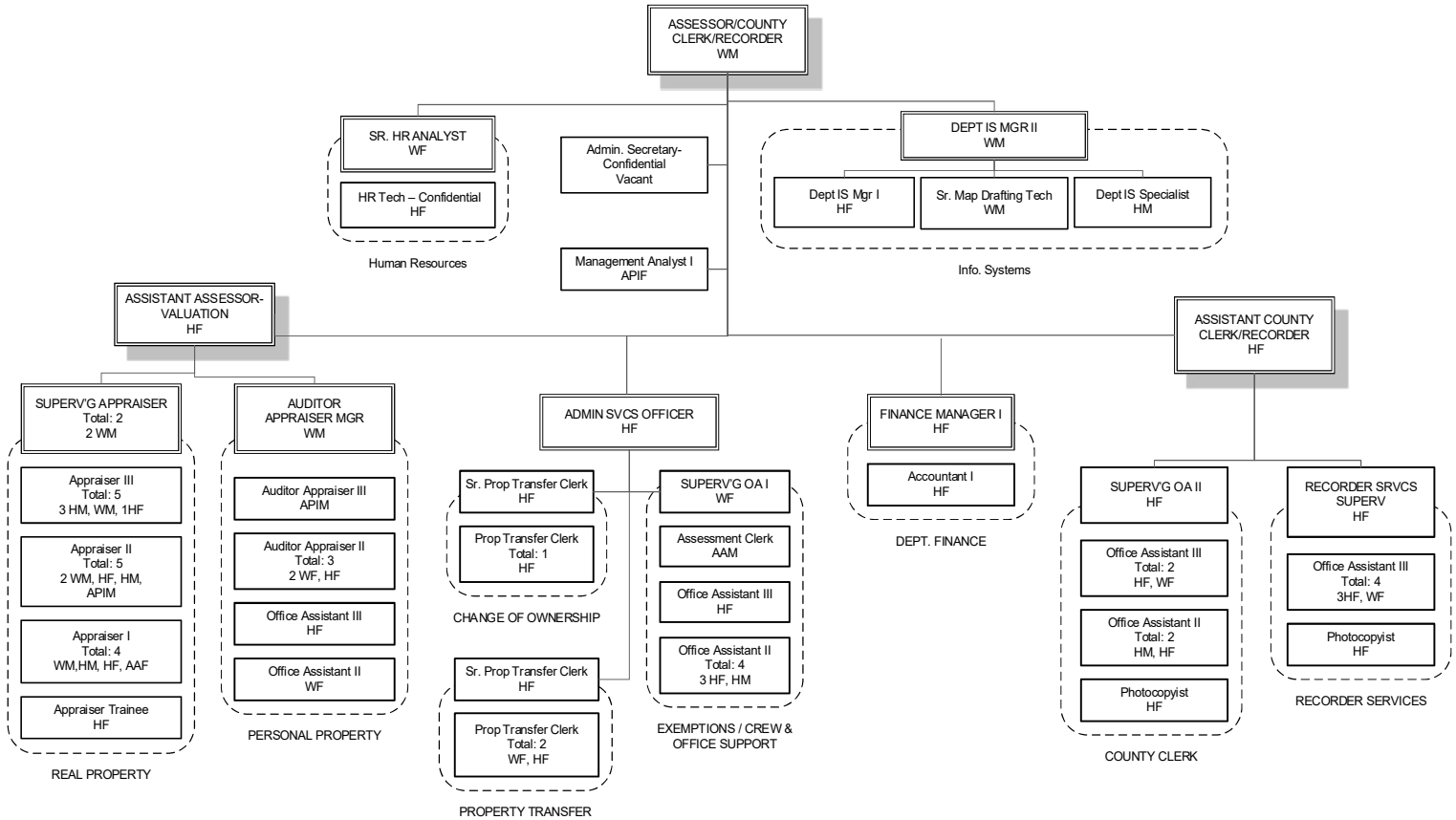


M – Male F – Female

AA - African American; H – Hispanic; API – Asian/Pacific Islander; W - White other than Hispanic; AI – American Indian/Alaskan Native

Section 2

Organizational Profile Assessor, County Clerk-Recorder



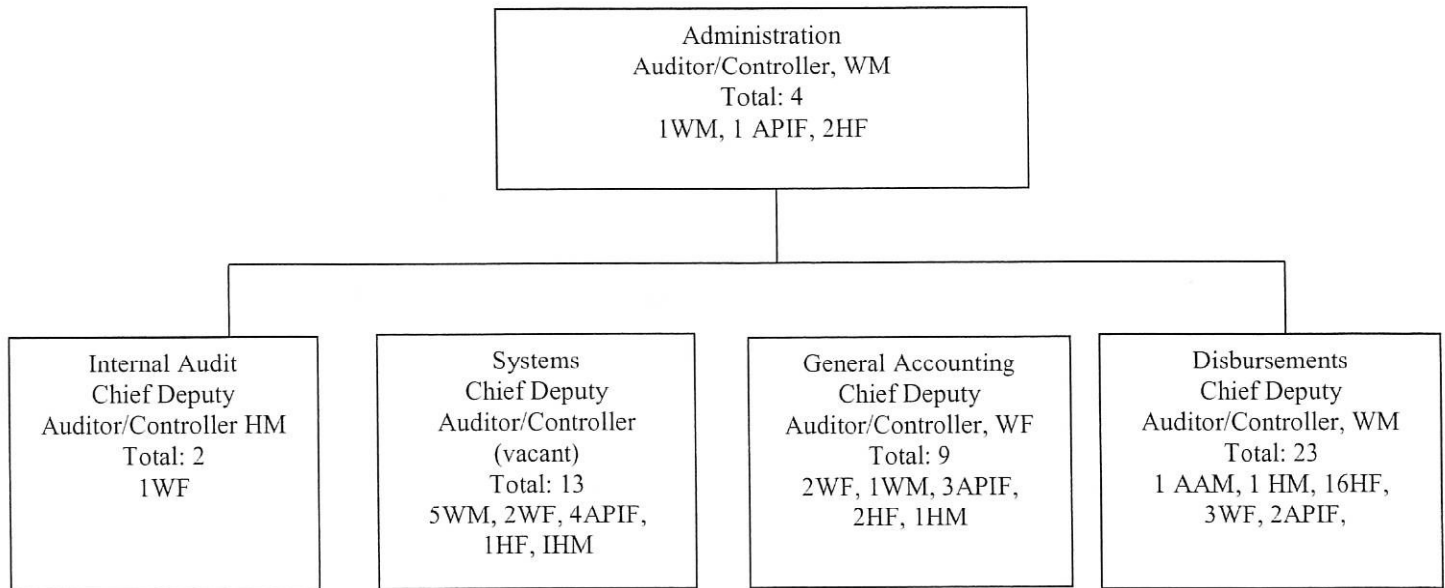
M – Male F – Female

AA - African American; H – Hispanic; API – Asian/Pacific Islander; W - White other than Hispanic;
AI – American Indian/Alaskan Native

Data as of 12/31/17

Section 2

Organizational Profile Auditor-Controller

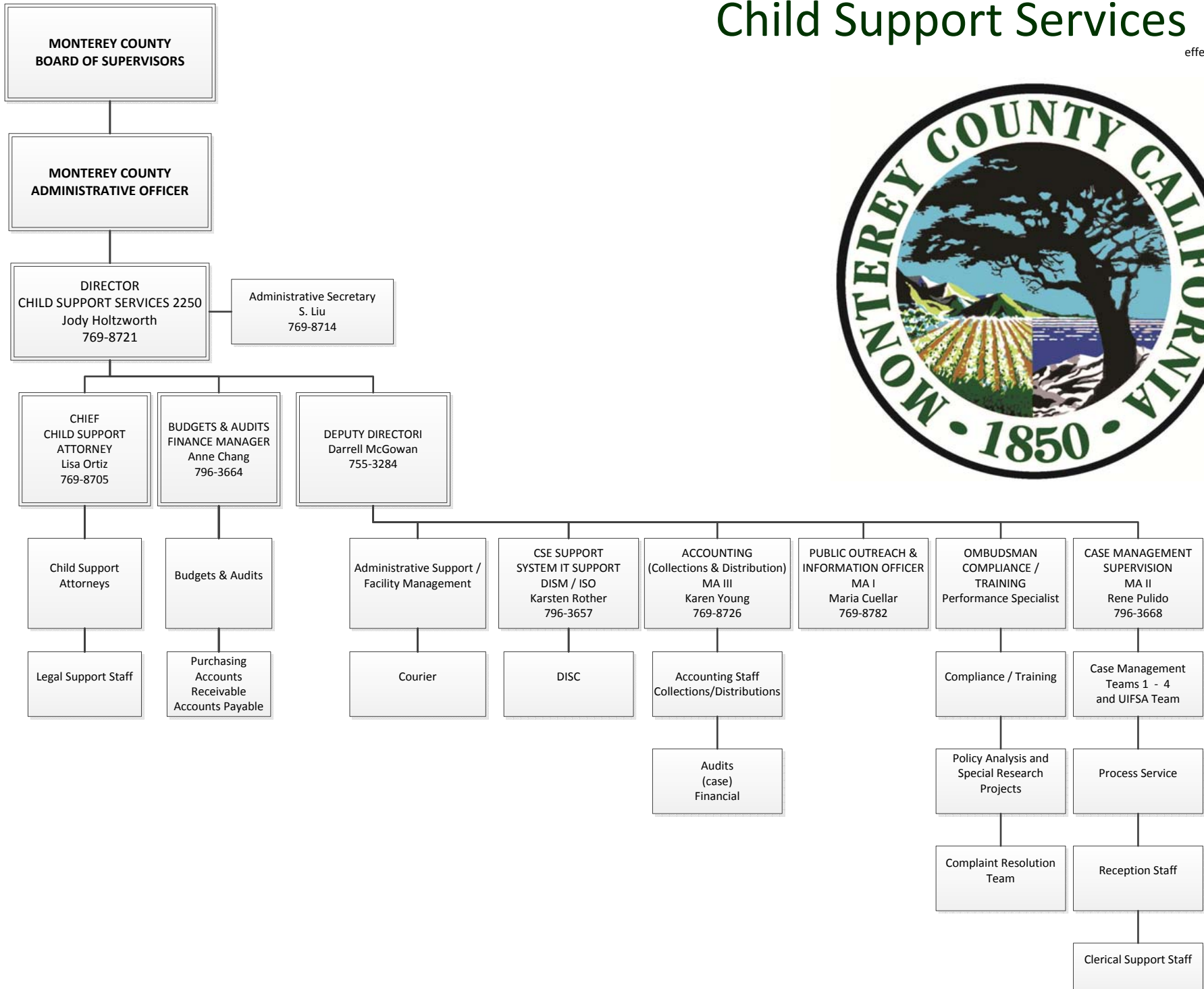


M – Male F – Female

AA - African American; H – Hispanic; API – Asian/Pacific Islander; W - White other than Hispanic; AI – American Indian/Alaskan Native

Child Support Services 2250

effective March 21, 2017



District Attorney

District Attorney, WM

Total = 4

2 – WM

2 – WF

Chief Asst DA,
WM

Total = 10

3 WM

1 APIF

4 WF

2 HF

Finance
Mngr – WM

Total = 3

1 HF

1 WF

1 WM

Asst DA #1, WF

Total = 12

2 WM

7 WF

1 HF

1 HM

1 AAF

Victims
Mngr – WF

Total = 11

9 HF

1 APIF

1 AAF

Clerical
Supv – 2 HF

Total = 26

2 HM

6 WF

16 HF

2 APIF

Mngr DA #1, WM

Total = 8

4 WF

4 WM

Retired-

Total: 6

2- WM

2 WF

1- HM

1-API

Asst DA #2- WF

Total = 17

7 WM

7WF

3 HF

Asst DA #3- WM

Total = 10

5 WF

3 WM

1 APIF

1 AIM

Investigators

Chief, WM

Total = 34

13 WM

8 WF

1 APIM

1 APIF

5 HF

6 HM

Total = 141

Dec. 31, 2017

**ECONOMIC DEVELOPMENT
DEPARTMENT**

**Director of Economic Development
W/M**

**Senior Secretary
H/F**

HOUSING

**Housing Program Manager
(Vacant)**

**Redevelopment & Housing
Project Analyst II
W/M**

**Redevelopment & Housing
Project Analyst I
H/F**

**Administrative Services
Assistant
W/F**

ECONOMIC DEVELOPMENT

**Management Analyst III
W/F**

**Redevelopment & Housing
Project Analyst II
H/M**

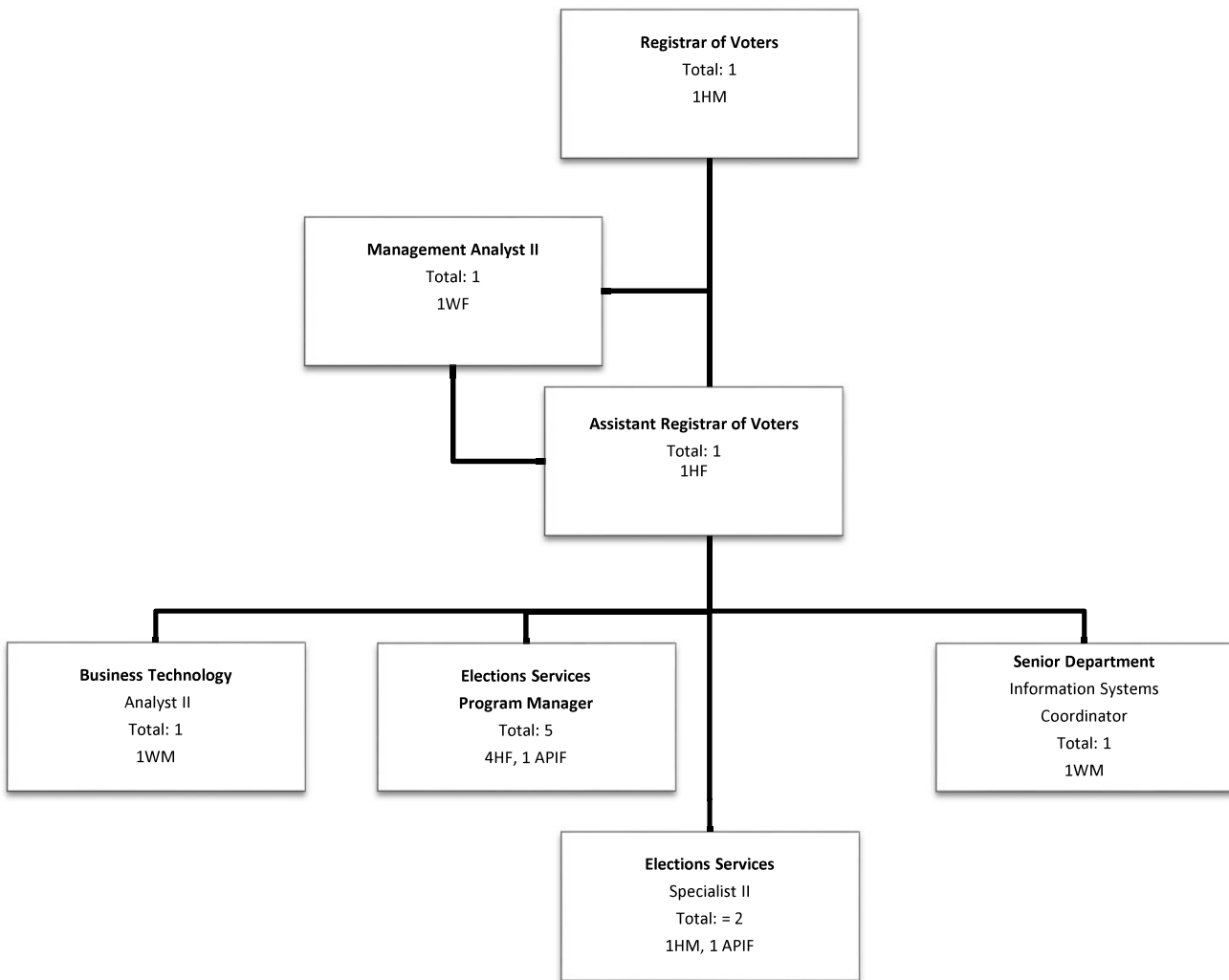
FINANCIAL SUPPORT

**Management Analyst II
A/F**

January 25, 2018

Section 2

Organizational Profile (Elections Department)



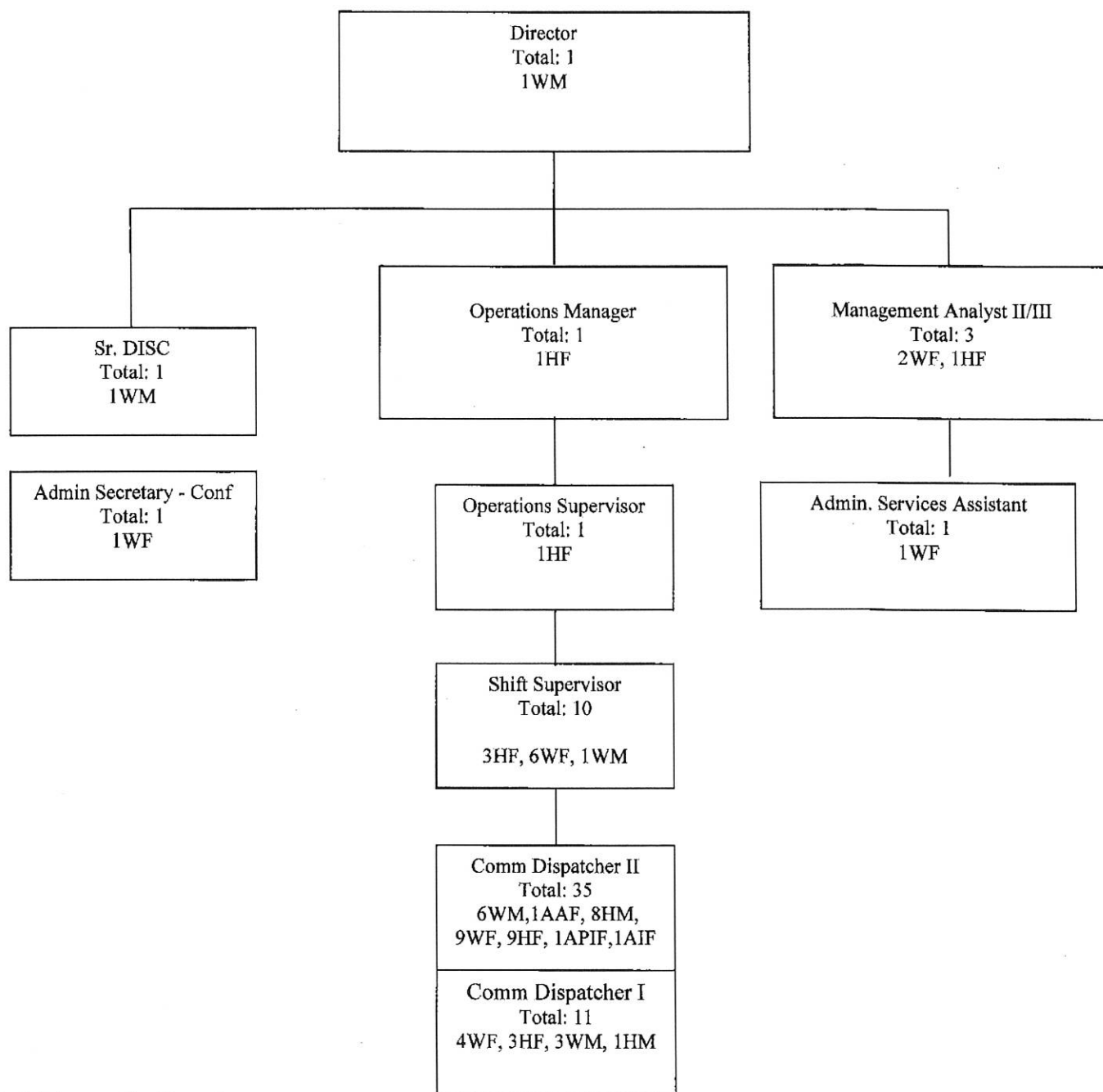
M – Male F – Female

AA - African American; H – Hispanic; API – Asian/Pacific Islander; W - White other than Hispanic;

AI – American Indian/Alaskan Native

Section 2

Organizational Profile (Emergency Communications Center)



M – Male F – Female

AA - African American; H – Hispanic; API – Asian/Pacific Islander; W - White other than Hispanic; AI – American Indian/Alaskan Native



Department of Health Organizational Chart

Assistant CAO
Manny Gonzalez

DIRECTOR OF HEALTH
Elsa Jimenez 755-4525 or 755-4526

COMMUNITY HEALTH CENTER BOARD

Planning, Evaluation, and Policy
Krista Hamt 755-4556
Public Health Program Manager II

Health Equity and Community Planning
Health Equity Coordination
Community Engagement
Med-Cal Outreach and Enrollment
Data and Epidemiology Analytics
Accreditation, Evaluation & Grant Writing

Communications

Public Information Officer
Karen Smith

PEP - Total 6
1AIPM, 4HF, 1 (OF)

Administration Bureau
Ezequiel Vega Health
Bureau Chief

Finance
Accounts Payable & Receivable
Budget Coordination & Oversight
Central Purchasing
Financial Compliance – Guidance & Oversight
General Accounting
Fixed Assets
Facilities Management
Information Technology
Automated Information Systems
PC Technical Support
Procurement & Accounting

ADMIN - Total 19
9HF, 3HM, 3WM, 3VF, 1 (OF)

IT - Total 10
1AIPM, 1AIPM, 1HF, 3HM, 1MF, 3WM

Behavioral Health Bureau
Anis Miller 755-4580 (Sr. Sec.)
Bureau Chief

Mental Health
Adoption Prevention
Case Management
Community Housing
Crisis Services
Criminal Justice Services
Day Treatment
Dual Diagnosis Programs
Inpatient
Outpatient
Early Intervention Services
Family Preservation & Reunification
Homeless Services
Institutions of Mental Disease
Intensive Home Based Services
Mental Health Court
Outpatient
Peer Counseling
Prevention
School-Based Counseling

State Hospital
Supportive Employment
Support Groups
Wellness Center
Workforce Education & Training

Alcohol & Drug
First Offender
Drug Court
Drug Diversion
Narcotic Treatment Programs
Outpatient Services Prevention
Pueblo del Mar – Transitional Housing
Residential
Residential Health Promotion
Alcohol & Other Drug Abuse
Mental Illness Prevention

BEHAVIORAL HEALTH - Total 367
21AIPF, 5AIPM, 9AAF, 2AAM, 166HF, 40HM, 3AIF, 95VF, 25WM

Health Officer/Public Health Bureau
Dr. Edward Moreno 755-4385
Health Officer/Director of Public Health
Bureau Chief

Children's Medical Services
California Children's Services
Medical Therapy Unit Child Health & Disability Program
Child Lead Poisoning Prevention
Community Health Regional Teams
Epidemiology & Surveillance
HIV/AIDS Prevention
TB Investigation and Control
STD Partner Services
Syringe Exchange

Health Promotion Services
Employee Wellness Program
Safe Routes to School
Teen Pregnancy and STD Prevention
Tobacco Control and Cessation
Violence and Injury Prevention
Maternal and Perinatal Health
Contraception
Sudden Infant Death Syndrome Program
Nutrition Services
Nutrition Education and Obesity Prevention
Special Supplemental Food Program for Women, Infants, and Children
Public Health Emergency Preparedness
Hospital Preparedness
Public Health Emergency Preparedness
Public Health Laboratory
Clinical Testing
Environmental Testing
Vital Records
Birth and Death Certificates
Medical Marijuana Cards

PUBLIC HEALTH - Total 147
14AIPF, 2AIPM, 8AAF, 73HF, 8HM, 35WMF, 7WM

Clinic Services Bureau
Julie Edgcomb 796-3770 –
(Sr. Sec. San Pedro 796-1386)
Bureau Chief

Clinic Administration, Fiscal & IS Mgmt.
Federally Qualified Health Center Look-Alike (FQHC-LA) Administration Budget, Billing
Contracts and Credentialing Receivable Info
System Management & Reporting **Quality Improvement**
FQHC-LA Clinics
Alisal Health Center
Laurel Family Practice
Laurel Internal Medicine
Laurel Pediatric Clinic
Monterey County Clinic at Marina Monterey
County Integrated Care Seaside Family Health
Center Bismarck Public Health Clinics
Immunizations for Children and Adults Latent TB Infection
Sexually Transmitted Infection

CLINIC SERVICES - Total 271
13AIPF, 3AIPM, 4AAF, 204HF, 18HM, 1AIF, 1 (OM), 23VF, 4VM

Emergency Medical Services Agency
Michael Petrie – 755-4964
EMS Director
Bureau Chief

EMS Systems Administration
Advisory Committees
Local EMS Agency/Local EMS Plan
**Maddy Funding ** EMS Fund
Medical Control
Certificate & Training Standards
Approval & Monitoring of Training
Early Responder
Emergency Medical Technician
First Responder
Paramedics Accreditation
Mobile Intensive Care Nurse
Authorization
EMS Communications
Emergency Medical Plan
Ambulance Contracting/Licensing
Special Event Coordination/Liaison
Specialty Care Center Designation
Paramedic Base/Receiving Hospitals
Tracking of Hospital Ambulance
Diversion

Quality Assurance & Data Collection
Data Collection and Analysis
Mainland County-Wide Quality Assurance Program
Public Information & Education
CPR
Complaint Investigation & Resolution
Emergency Medical
Medical Disaster
Coordination of Countywide Medical
Disaster Planning
Regional Medical Disaster
Planning
Special Event Coordination/Liaison
Automated External Responder
Paramedic Base/Receiving Hospitals
Tracking of Hospital Ambulance
Diversion

EMERGENCY MEDICAL SERVICES
Total 9
1AAE, 1HF, 2WF, 3WM

Environmental Health Bureau
John Ramirez – 755-4539
Director of Environmental Health
Bureau Chief

Drinking Water Source Assessment
Local Small, LPA Small and State
WRS Sampling & Inspection
Water Risk Construction, Repair & Well Water Construction, Repair & Destruction Inspection
Hazardous Materials Management Services
Aboveground Petroleum Storage Tank Inspection
Chemical Waste Prevention
Emergency Response
Hazardous Waste Generator
Monitoring Wells/Sol Borings
Outreach & Education
Pesticide Exposure
Site Mitigation
Underground and Above Storage Tanks
Remediation & Resource Recovery
Central Coast & Recycling Market
Development Zone
Commercial Waste Reduction
Green Business
Outreach & Education
Residential Recycling

Refuse Collection Franchise
Administration
Recycling
Solid Waste Management Services
Body Art Facility & Operator
Inspection
Illegal Dumping Enforcement
Liquid Waste Hauler Inspection
Medical Waste Generator
Solid Waste Facility Inspection
Waste Transfer Station
Environmental Health Review Services
Building Permit Reviews
General Plan & Regional Planning
Greywater Disposal
Onsite Wastewater Treatment
Pharmaceuticals
Subdivision & Lot-Line Adjustment
Reviews
Waste Water Treatment Reclamation
& Nitrate Monitoring
Wine/Waste Water Disposal

Animal Services
Field Services
Bait Traps
Complaint Investigation
Community Education
Nuisance/Dangerous
Shelter Program
Adoption
Animal Behavioral Education & Licensing
Owner Returns
Quarantine Services
Stray Animal Sheltering
Spay/Neuter Clinic
Dog & Cat Spays and Neuters

Human Resources
Cindy Girard-Berry-755-4547
HR Manager

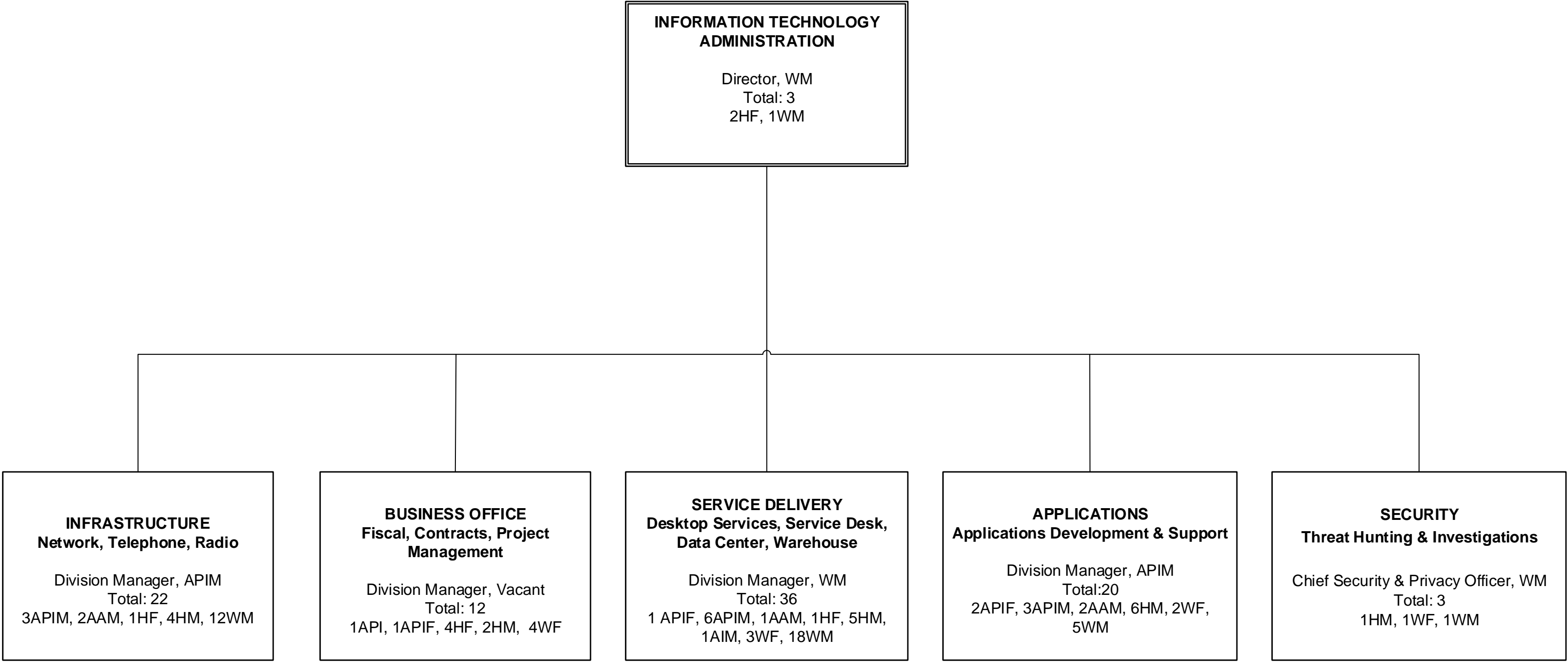
American with Disabilities Act
Benefits Administration
Compensation
Classifications & Organizational Development
Compliance
DFH/EEOC
Employee Orientation
Employee Relations
Ergonomics & Procedures
Labor Memoranda of Understanding
Onboarding/Offboarding
Payroll Processing
Performance Evaluations
Personnel Action Forms
Recruitment Action Forms
Retention Programs
Safety Coordination
Training & Development
Worker's Compensation
Coordinator

Public Administrator/
Public Guardian
Elsa Jimenez
Public Administrator
Conservatorships
Decedent estate
Investigation
Information and Referral
Investigation
LPS Conservatorships
Probate
Public Administrator
Public Representative
Payers
PUBLIC GUARDIAN - Total 9
1AIPM, 1HF, 4WF, 3WM

SART Program
Sherie Goldman,
Nurse Practitioner II
SART - Total 3
3WF

HR - Total 9
2AIPF, 1HF, 3HM, 2WF, 1WM

1/20/17



Section 2

Organizational Profile Natividad Medical Center

NMC CEO

1WM

ADMINISTRATION SUPPORT

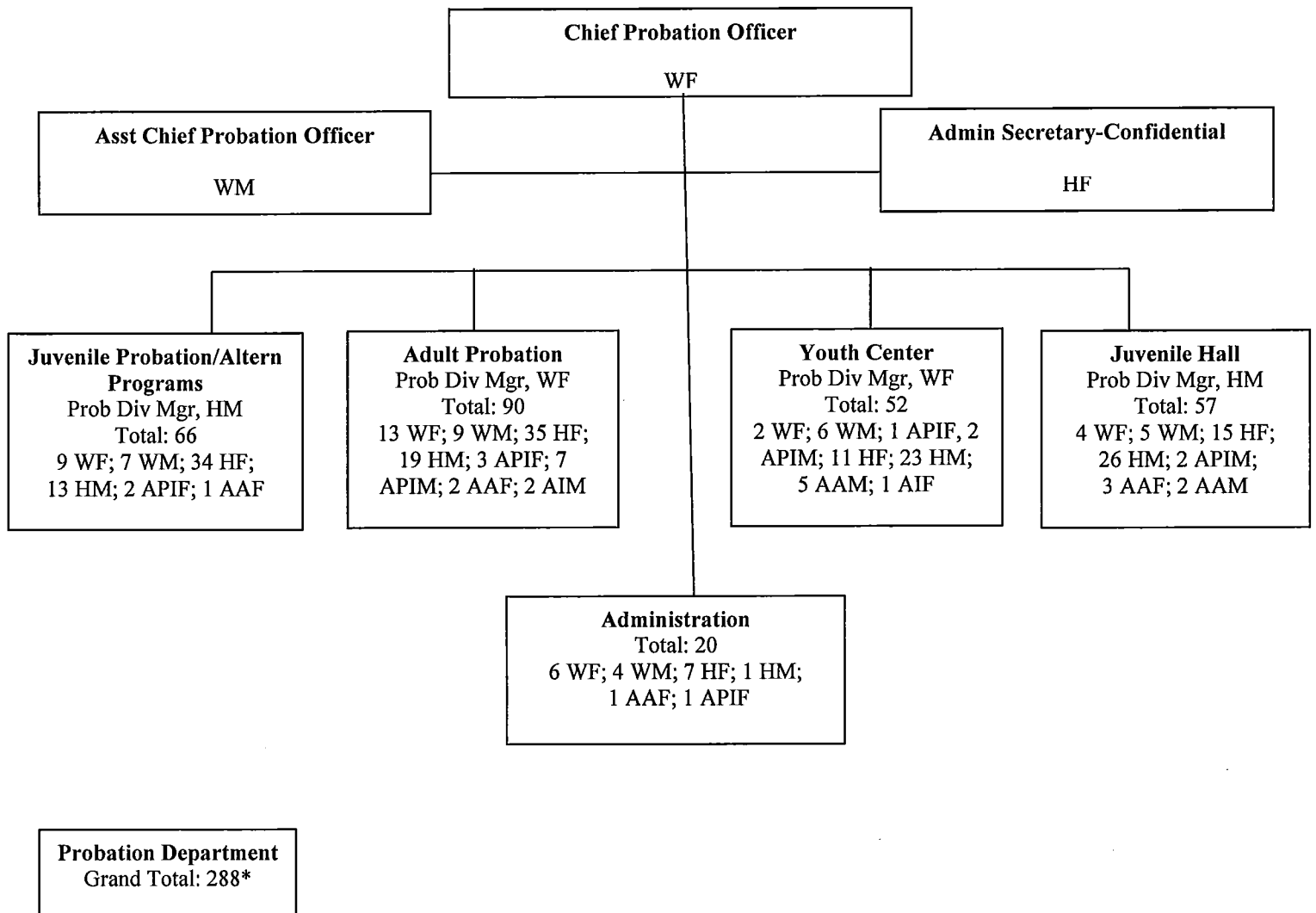
TOTAL 3

3HF

CHIEF NURSING OFFICER	CHIEF MEDICAL OFFICER	CHIEF FINANCIAL OFFICER	CHIEF INFORMATION OFFICER	ASSISTANT ADMINISTRATOR- OPERATIONS & SUPPORT	ASSISTANT ADMINISTRATOR- COMMUNITY & ORG. RELATIONS	HUMAN RESOURCES ADMINISTRATOR
1WF	1WM	1AM	1WM	1WF	1WF	1AAF
INTENSIVE CARE UNIT TOTAL 41 11AF, 3AM, 2AAF, 1AAM 10HF, 1HM, 12WF, 1WM	PHYSICIANS TOTAL 36 3HF, 1AF, 10WF, 6AM, 3HM, 11WM, 1UM, 1AAM	PURCHASING & MATERIALS MANAGEMENT TOTAL 16 1AF, 1AM, 1AAM, 4HF, 5HM, 1UF, 2WF, 1WM	INFORMATION TECHNOLOGY TOTAL 18 1AAM, 3HF, 4HM, 1AIM, 2WF, 7WM	DIETARY & CLINICAL NUTRITION TOTAL 38 7AF, 4AM, 1AAF, 18HF, 5HM, 3WF		HUMAN RESOURCES TOTAL 11 1AAF, 1AM, 4HF, 5WF
NEONATAL INTENSIVE CARE UNIT TOTAL 24 8AF, 5HF, 11WF	FAMILY PRACTICE RESIDENCY TOTAL 35 4AF, 4AM, 2AAF, 4HF, 2HM, 3UF, 1UM, 11WF, 4WM	GENERAL ACCOUNTING TOTAL 6 1AF, 1HF, 2HM, 2WF	HEALTH INFORMATION MANAGEMENT TOTAL 22 3AAF, 1AAM, 12HF, 1HM, 1AIF, 4WF	ENVIRONMENTAL SERVICES TOTAL 63 4AF, 3AM, 1AAF, 2AAM, 30HF, 20HM, 1WF, 2WM		EMPLOYEE HEALTH TOTAL 2 1AF, 1HM
MEDICAL SURGICAL UNIT TOTAL 78 32AF, 4AM, 2AAM, 1AAF, 18HF, 5HM, 12WF, 4WM	PHARMACY TOTAL 25 5AF, 3AM, 2AAF, 8HF, 2HM, 3WF, 2WM	PATIENT ACCOUNTING TOTAL 23 18HF, 4WF, 1WM		ENGINEERING & SAFETY TOTAL 17 1AF, 1HF, 6HM, 1AIF, 7WM, 1WF		RECORDS & RETENTION TOTAL 3 1AAF, 2HF
PEDIATRIC UNIT TOTAL 13 2AF, 2HF, 9WF	NATIVIDAD MEDICAL GROUP TOTAL 7 6HF, 1WF	PHYSICIAN BILLING TOTAL 3 3HF		LABORATORY TOTAL 42 14AF, 2AM, 1AAF, 1AAM, 9HF, 4HM, 2AIF, 8WF, 1WM		HOSPITAL EDUCATION TOTAL 1 1HF
MENTAL HEALTH UNIT TOTAL 31 1AF, 2AAF, 1AAF, 1AAM, 10HF, 3HM, 9WF, 4WM	NIDO CLINIC TOTAL 5 4HF, 1HM	ADMITTING & REGISTRATION TOTAL 35 28HF, 4HM, 3WF		RADIOLOGY TOTAL 42 1AF, 2AM, 12HF, 5HM, 15WF, 7WM		CENTRAL TRANSPORTATION TOTAL 8 1AM, 2HF, 3HM, 1WM, 1WF
MATERNAL INFANT & LACTATION/NINOS CLINICS TOTAL 41 14AF, 20HF, 7WF	SPECIALTY CLINIC TOTAL 22 3AF, 14HF, 2HM, 1WF, 1WM, 1AAM	MANAGED CARE/FINANCIAL COUNSELING TOTAL 10 6HF, 1 HM, 3WF		ULTRASOUND TOTAL 10 5WF, 1HF, 1AM, 1HM, 1WM, 1UM		STAFFING RESOURCES TOTAL 3 1HF, 1HM, 1WF
ACUTE REHABILITATION UNIT TOTAL 49 14AF, 3AM, 16HF, 3IF, 6HM, 7WF	INTERPRETER SERVICES TOTAL 4 2HF, 2HM	DECISION SUPPORT TOTAL 2 1HF, 1HM		COMMUNICATIONS TOTAL 8 6HF, 2HM		
EMERGENCY DEPARTMENT TOTAL 62 7AF, 6AM, 2AAF, 1AAM, 18HF, 7HM, 18WF, 3WM	MEDICAL STAFF OFFICE / LIBRARY TOTAL 11 1AF, 3HF, 1HM, 6WF			THERAPY SERVICES TOTAL 18 1AM, 4HF, 1HM, 8WF, 3WM, 1UM		
LABOR & DELIVERY / ANTENATAL TOTAL 60 9AF, 2AAF, 29HF, 20WF	DIABETIC CLINIC TOTAL 2 2HF					
SURGERY & RECOVERY TOTAL 21 7AF, 1AAF, 1AAM, 2HF, 2HM, 4WF, 4WM	QUALITY MANAGEMENT TOTAL 9 1AF, 1HF, 1HM, 6WF					

Section 2

Organizational Profile Probation Department



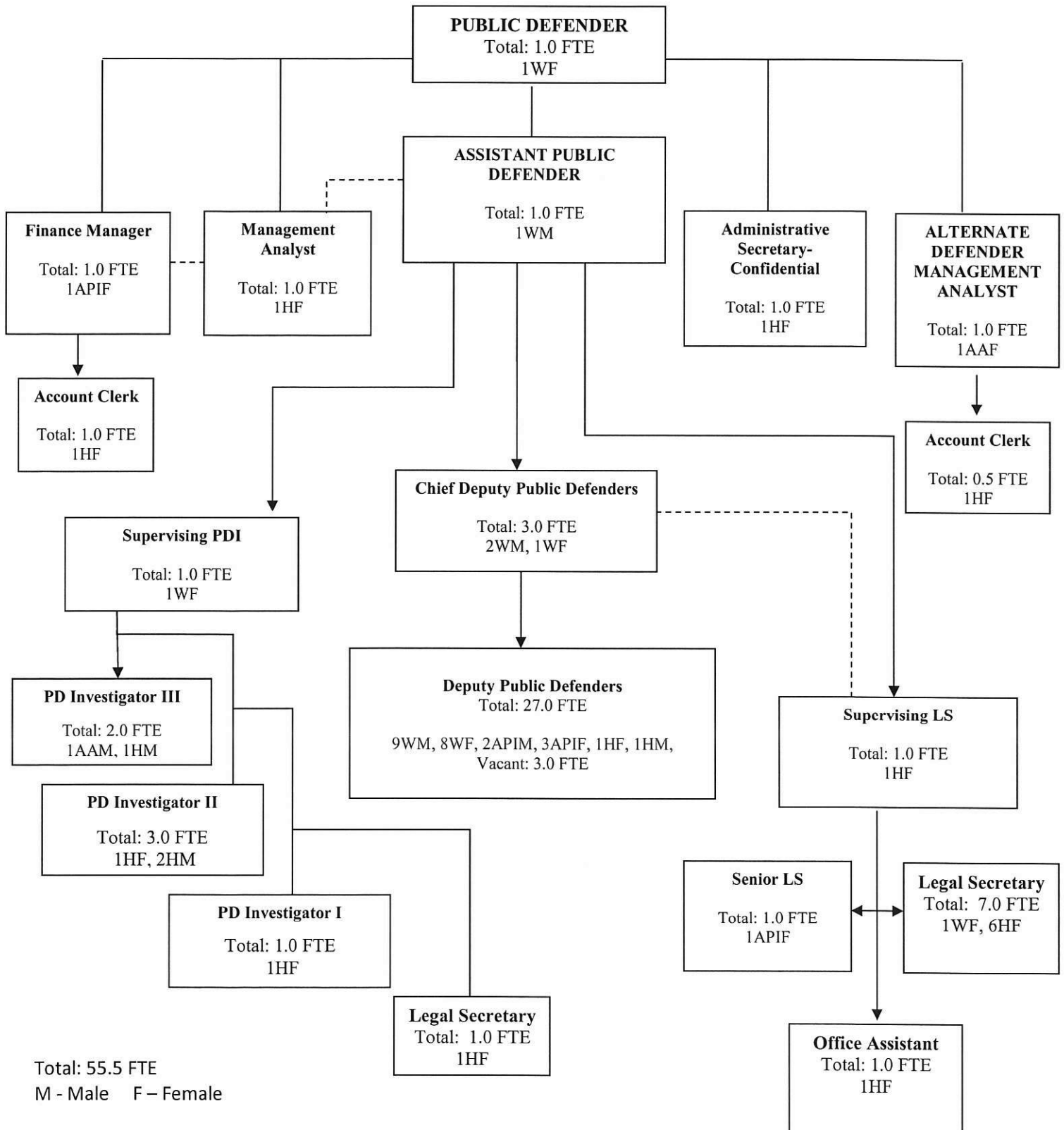
*Total includes all employee separations listed on Section 4 - Personnel Activity

M – Male F – Female

AA - African American; H – Hispanic; API – Asian/Pacific Islander; W - White other than Hispanic; AI – American Indian/Alaskan Native

Section 2

Organizational Profile Public Defender

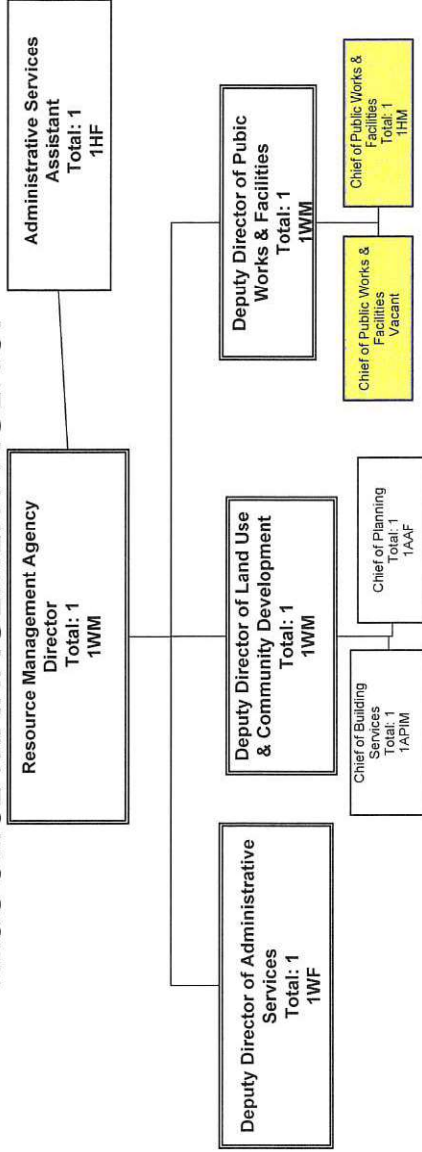


Total: 55.5 FTE

M - Male F - Female

AA- African American; H- Hispanic; API- Asian/Pacific Islander;
W- White Other Than Hispanic; AI- American Indian/Alaskan Native

RESOURCE MANAGEMENT AGENCY



12-23-2017

RESOURCE MANAGEMENT AGENCY

Land Use & Community Development Division

Development Services/Surveys

~~Deputy Director Land~~

Use & Community
Development
Total: 1
1WM

Chief of Surveys
Total: 1
1WM

Surveys - Crew 331

Assistant Engineer
Total: 1
1HM

Engineering Technician
Total: 1
1HM

GIS Analyst I
Total: 1
1WM

Student Intern
Total: 1
1WF

Development Services - Crew 550

Civil Engineer
Underfill RMA Srvs Mgr
Total: 1
1AM

Encroachments

Assistant Engineer
Vacant
819641A100001

Engineering Technician
Total: 3
2HM
1AM

Engineering Aide III
Total: 1
1HF

Special Projects - Crew 325

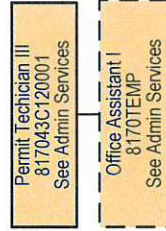
Civil Engineer
Total: 1
1WM

Legend

Permanent Allocation Vacant	Permanent Allocation Budgeted in another Div.	Matrix Support
Employee WOC/ Special Assignment	Permanent Allocation UNFUNDED	Matrix Support Budgeted in another Division
Temporary Employee/Consultant	Permanent Allocation sitting in another Organizational Chart	

11/06/2017

Deputy Director of Land Use & Community
Development Division
Total 1
1WM



12/18/2017

RESOURCE MANAGEMENT AGENCY

Land Use & Community Development Division

Environmental Services

Deputy Director Land Use & Community Development
Total: 1
1WMM

Senior Water Resources Hydrologist
Total: 1
1WMM

Crew 575

Civil Engineer
Total: 1
1WMM

Water Resources Hydrologist
Total: 1
1WMM

Student Intern
Total: 2
1HF
1WF

Development Review

Water Resources Technician
Total: 4
1HF
1HM
1WF
1Vacant

RMA Services Manager
Total: 1
1WF

Management Analyst I
Total: 1
1WF

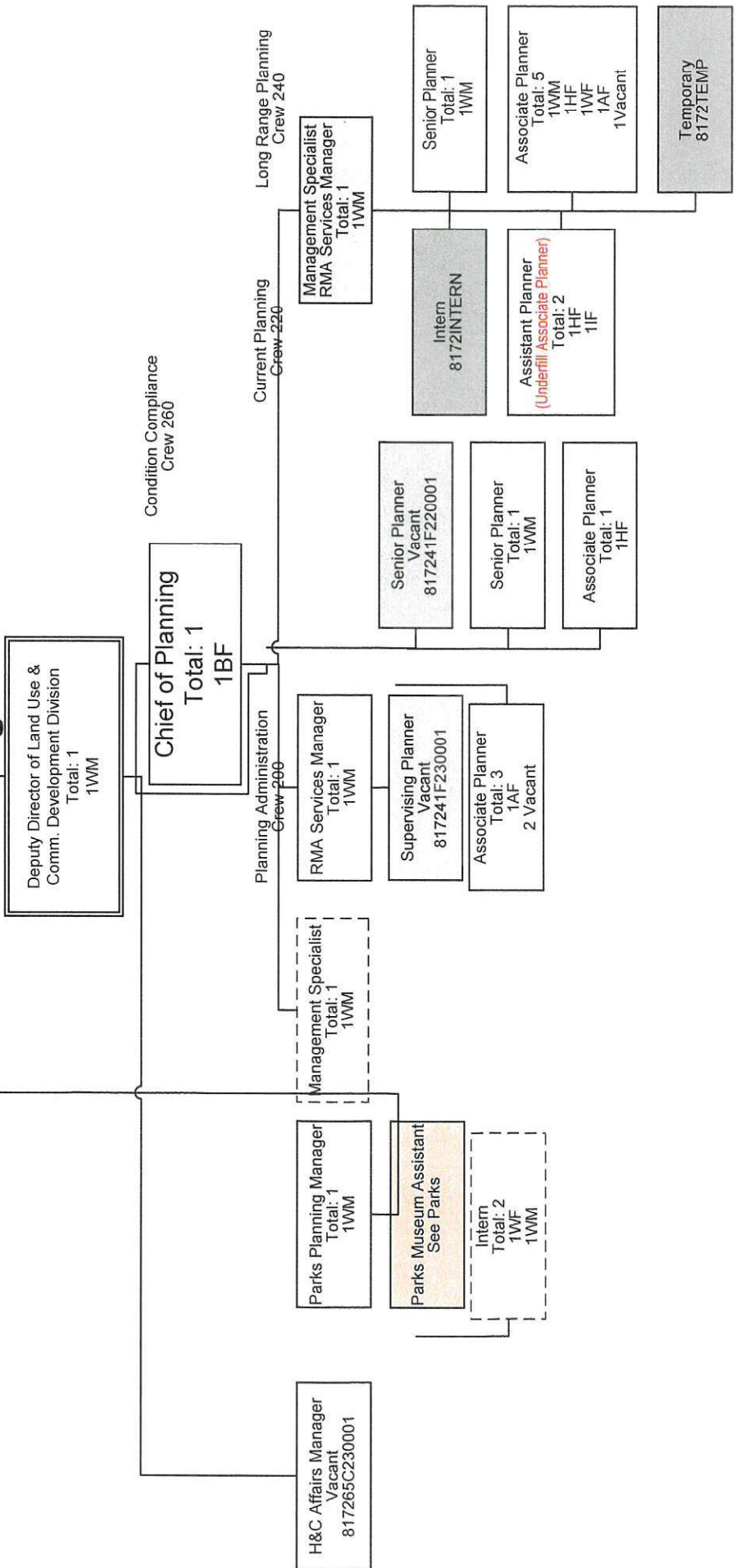
Legend

Permanent Allocation Vacant	Permanent Allocation Budgeted in another Div.	Matrix Support
Employee WOC/ Special Assignment	Permanent Allocation UNFUNDED	Matrix Support Budgeted in another Division
Temporary Employee/Consultant	Permanent Allocation sitting in another Organizational Chart	

11/20/17

RESOURCE MANAGEMENT AGENCY
Land Use & Community Development Division

Planning



11/22/2017

Management Analyst III
817214C310001
See Environmental Services

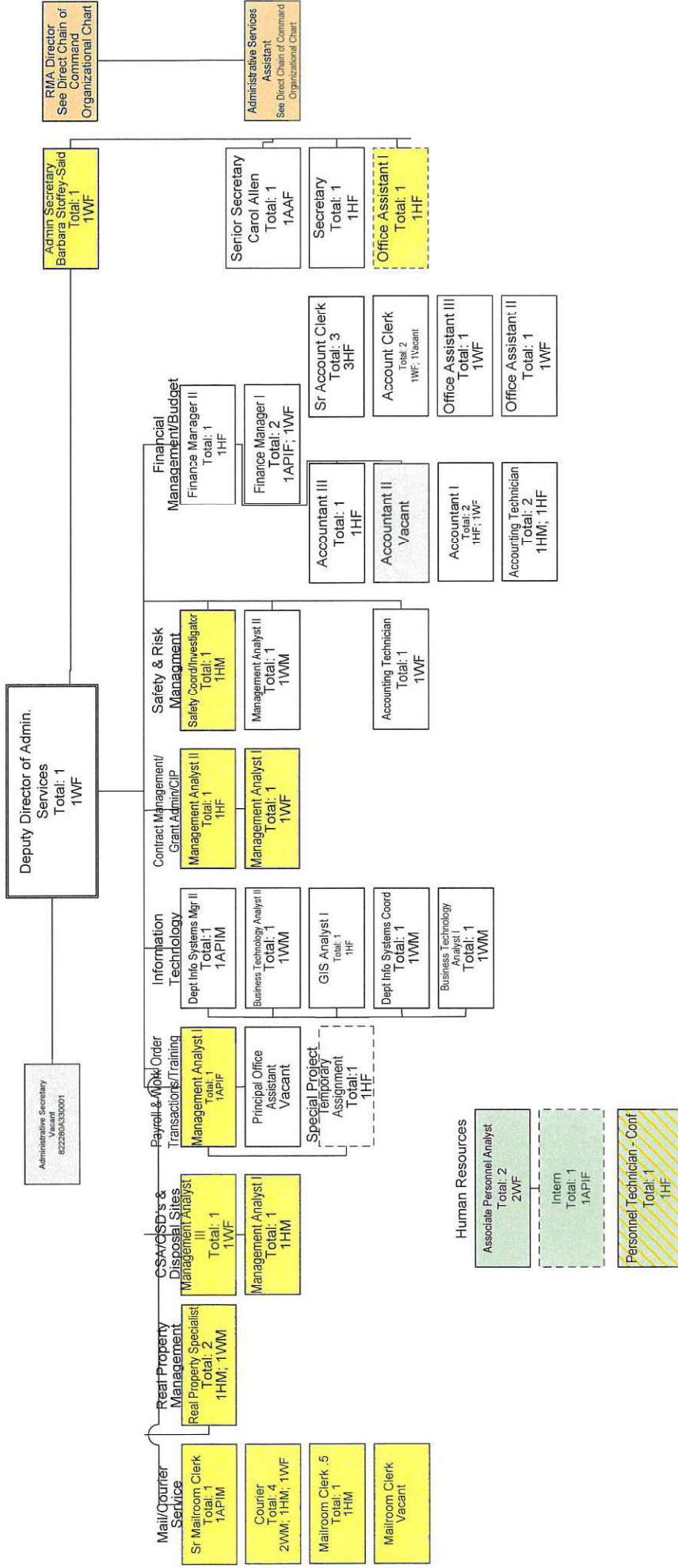
Sr. Secretary
817280A320001
See Building Services

Legend

Permanent Allocation Vacant	Permanent Allocation Budgeted in another Div.	Matrix Support
Employee WOC/ Special Assignment	Permanent Allocation UNFUNDED	Matrix Support Budgeted in another Division
Temporary Employee/Consultant	Permanent Allocation sitting in another Organizational Chart	

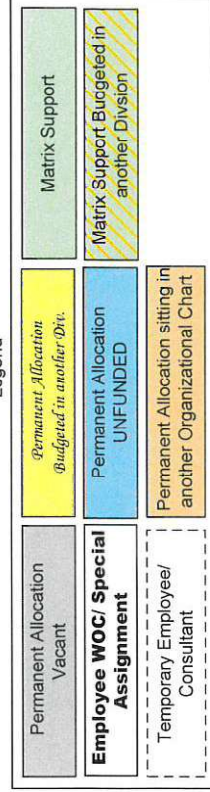
RESOURCE MANAGEMENT AGENCY

Administrative Services



12/23/2017

Legend



PARK OPERATIONS

Deputy Director of Public Works
& Facilities
Total: 1
1WM

Acting Chief of Parks
Total: 1
1HM

Admin Operations Manager
Total: 1
1WF

Crew 910

Parks Bld&Grd Wrk Super
Total: 1
1HM

Park B&G Worker II
Total: 4
3HM; 1WM

Park Services Aide I
Total: 3
1HF; 1WF; 1HM

Crew 920

Senior Parks U&W Systems
Specialist
Total: 1
1WM

ParkU&W Systems Specialist
Vacant
84752B400001

ParkU&W Systems Specialist
Vacant
847572B400002

Parks Bld&Grd Wrk Super
Total: 1
1HM

WOC Park B&G Worker II
Total: 2
2HM

Park B&G Worker II
Vacant
847572B310003

Park Services Aide II
Total: 2
1WF; 1WM

Crew 200

Parks Museum Assistant
Total: 1
1WF

Mechanic II
Total: 1
1WM

Park Services Aide III
Total: 1
1WM

Park Services Aide III
Total: 1
1WM

Park Services Aide I
Total: 1
1WF

Temp
Total: 1
1WF

County Park Ranger Supervisor
Total: 1
1WM

Crew 920

Range Master
Total: 1
1HM

Range Aide
Total: 1
1WF

Park Services Aide II
Total: 3
3WF

County Park Ranger III
Matt Sweet
847568A430001

County Park Ranger II
Total: 4
4WM

12/15/2017

Legend

Permanent Allocation Budgeted in another Div.	Permanent Allocation UNFUNDED	Temporary Employee Season Over - Off
Permanent Allocation Vacant	Permanent Allocation sitting in another Organizational Chart	Matrix Support
Employee WOC/ Special Assignment	Temporary Employee/Consultant	Matrix Support Budgeted in another Division

County Park Ranger Manager
Vacant
847568E010001

County Park Ranger III
Vacant
847568A420002

Deputy Director of Public Works & Facilities Total: 1 1WM
--



12-23-2017

RESOURCE MANAGEMENT PLAN Public Works, Parks & Facilities Division Road & Bridge Maintenance Unit

**Deputy Director of Public Works,
 Parks & Facilities**
 Total: 1
 1WM

Chief of Public Works
 Total: 1
 1HM

Management Analyst II
 Total: 1
 1WF

Assistant Engineer
 Underfill Project Mgr I
 Total: 1
 1HM

Maintenance Manager
 Total: 1
 1WM

Road Maint Superintendent
 Total: 1
 1WM

Admin. Services Assistant
 Total: 1
 1WF

Administrative Secretary
 Total: 1
 1HF

Secretary
 Total: 1
 1HF

Office Assistant II
 Total: 2
 2HF

Prmt Ctr

San Miguel Dist – Crew 301
 Road Superintendent
 Total: 1
 1WM

Maintenance Yard Clerk
 Total: 1
 1HM

Assist Rd Superintendent
 Total: 1
 1WM

Senior Road Maint. Worker
 Total: 2
 1HM
 1WM

Road Maint. Worker
 Total: 6
 2WM
 3HM
 1Vacant

Monterey Rd Dist – Crew 302
 Road Superintendent
 Total: 1
 1HM

Maint Yd & Invent Clerk
 Total: 1
 1HF

Assist Rd Superintendent
 Total: 1
 1HM

Senior Road Maint. Worker
 Total: 2
 2HM

Road Maint. Worker
 Senior Road Maint. Worker
 Total: 5
 4HM
 1AM

Road Maint. Helper
 Underfill Rd Maint. Wkr
 Total: 1
 1WM

Greenfield Rd Dist – Crew 303
 Assist. Rd Superintendent
 Total: 1
 1WM

Maintenance Yard Clerk
 Total: 1
 1WF

Senior Road Maint. Worker
 Total: 2
 1HM
 1WM

Road Maint. Worker
 Total: 4
 2HM
 2WM

San Ardo Rd Dist – Crew 304
 Road Superintendent
 Total: 1
 1WM

Maintenance Yard Clerk
 Total: 1
 1WF

Assist Rd Superintendent
 Total: 1
 1WM

Senior Road Maint. Worker
 Total: 2
 1HM
 1WM

Road Maint. Wkr
 Total: 3
 2WM
 1HM

Traffic Maintenance – Crew 305
 Traffic Maint. Superintendent
 Total: 1
 1HM

Traffic Maint. Worker
 Total: 4
 4HM

Bridge Maintenance – Crew 306
 Bridge Superintendent
 Total: 1
 1HM

Maintenance Yard Clerk
 Total: 1
 1HF

Assistant Bridge Superintendent
 Vacant
 844374E800001

Senior Tree Trimmer
 Total: 3
 3HM

Sr. Bridge Maint. Worker
 Total: 1
 1HM

Bridge Maint. Worker
 Total: 4
 4HM

Guard
 Total: 2
 2HM

Crew 525

Legend

Matrix Support

Permanent Allocation Vacant

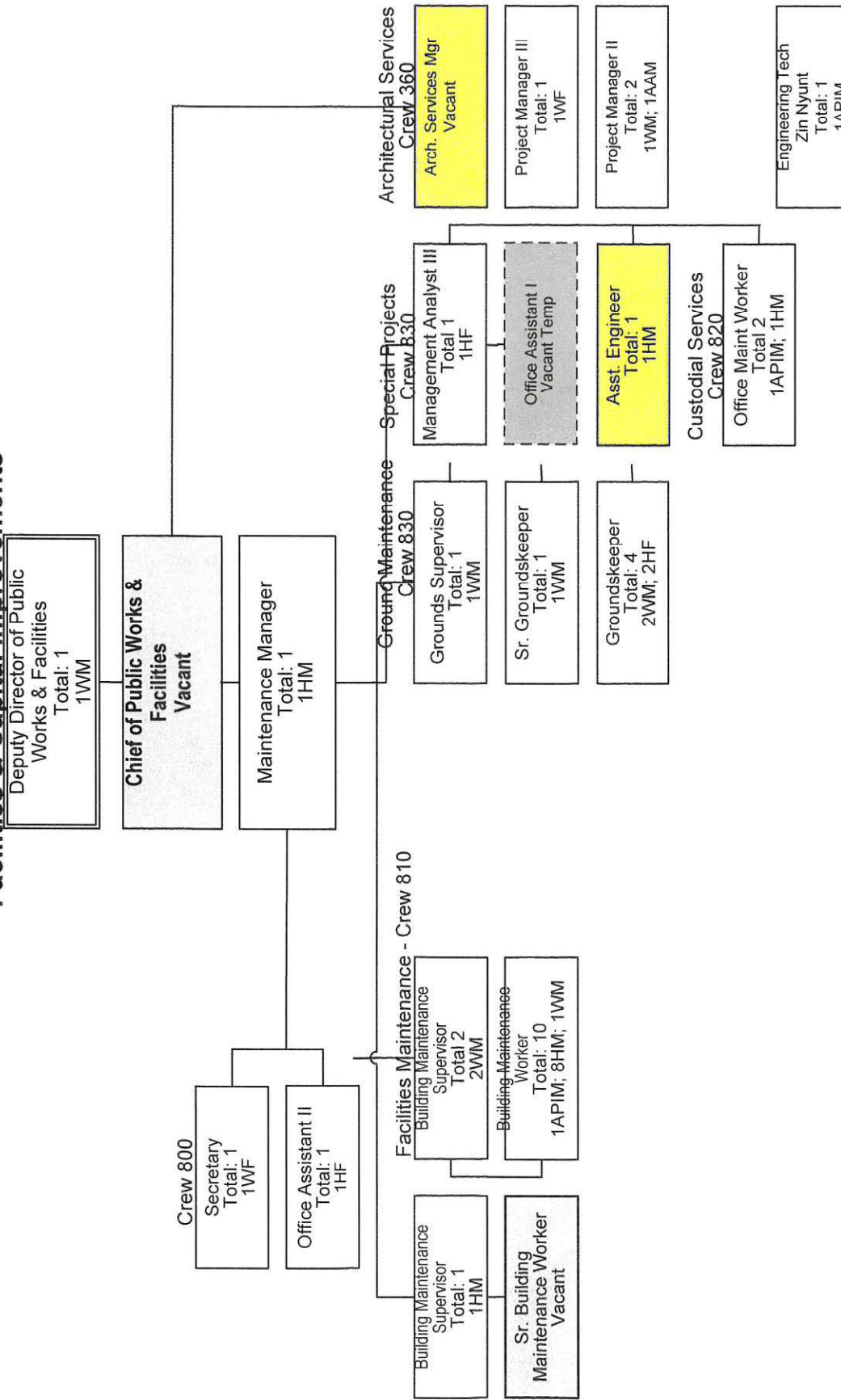
Temporary Employee/Consultant

Updated 03-12-18

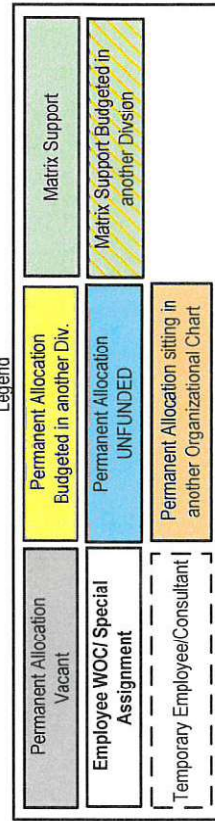
RESOURCE MANAGEMENT AGENCY

Public Works & Facilities Division

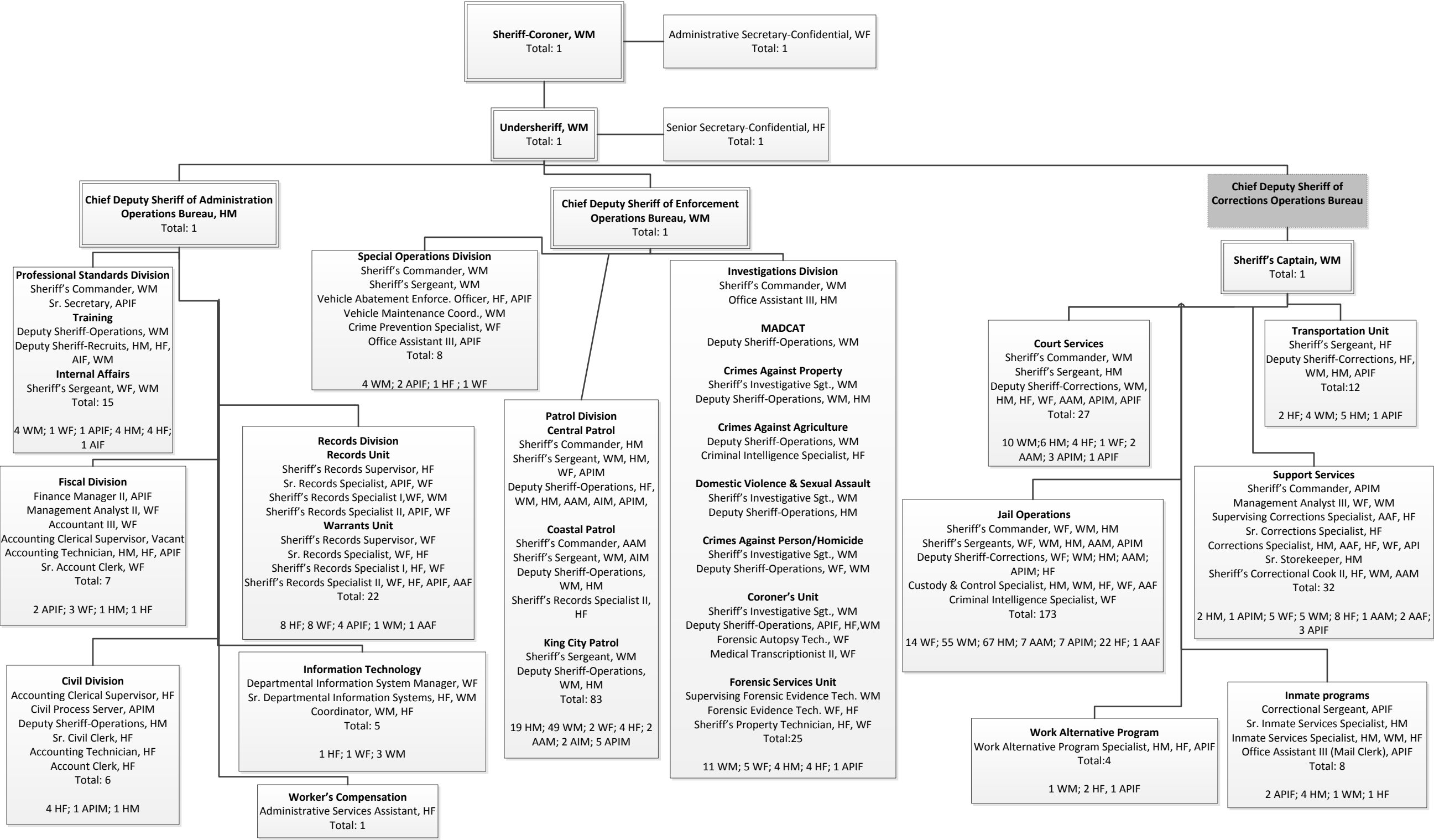
Facilities & Capital Improvements



Legend

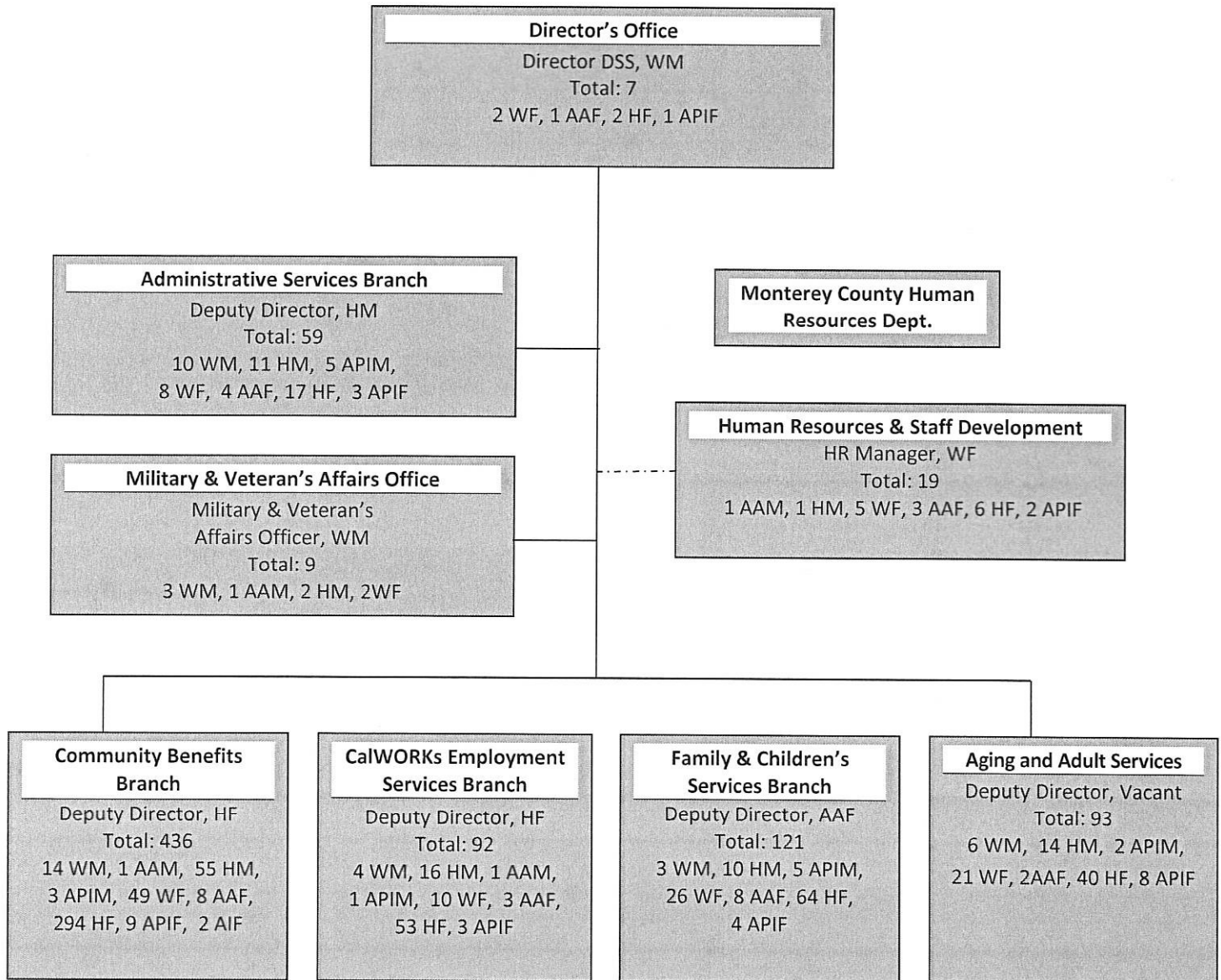


12-23-2017



Section 2

Organizational Profile Department of Social Services

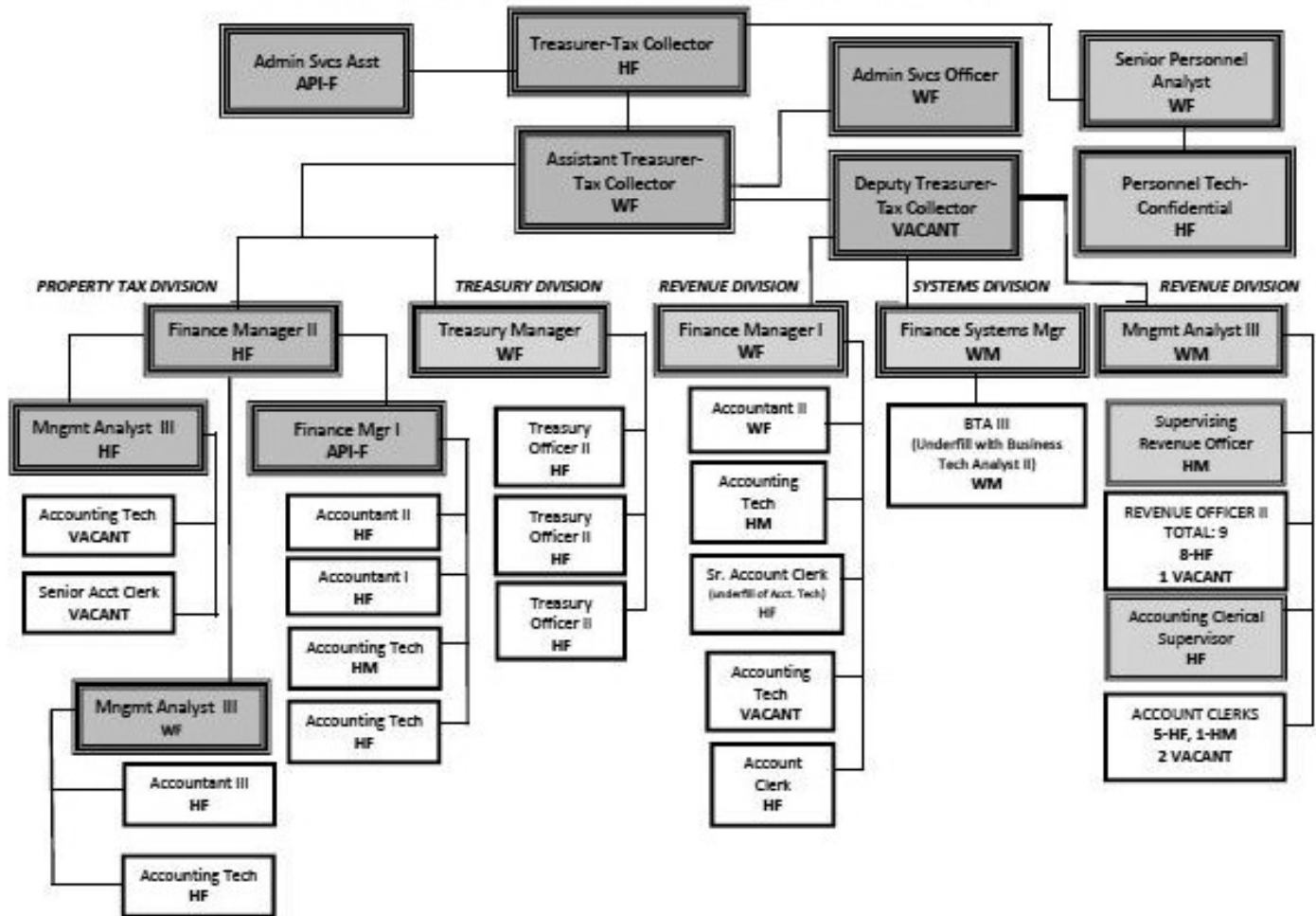


M – Male F – Female

AA - African American; H – Hispanic; API – Asian/Pacific Islander; W – White, Other; AI – American Indian/Alaskan Native

Organizational Profile

TREASURER-TAX COLLECTOR ORGANIZATION CHART (January-December 2017)



M – Male F – Female

AA - African American

W - White other than Hispanic

H – Hispanic

AI – American Indian/Alaskan Native

API – Asian/Pacific Islander