

Table 1. Upstream Adult Migration Historical Passage Days at Salinas River near Spreckels USGS Stream Flow Gage (1949-1994).

Hydrologic Year-Type	Median No. of Upstream Passage Days Jan 1-Mar 31	10% Variance (Passage Days)
All Year Types*	27	3
Dry Normal	16	2
Normal	47	5
Wet Normal	73	7

*All year types include dry, dry-normal, normal, wet-normal, and wet

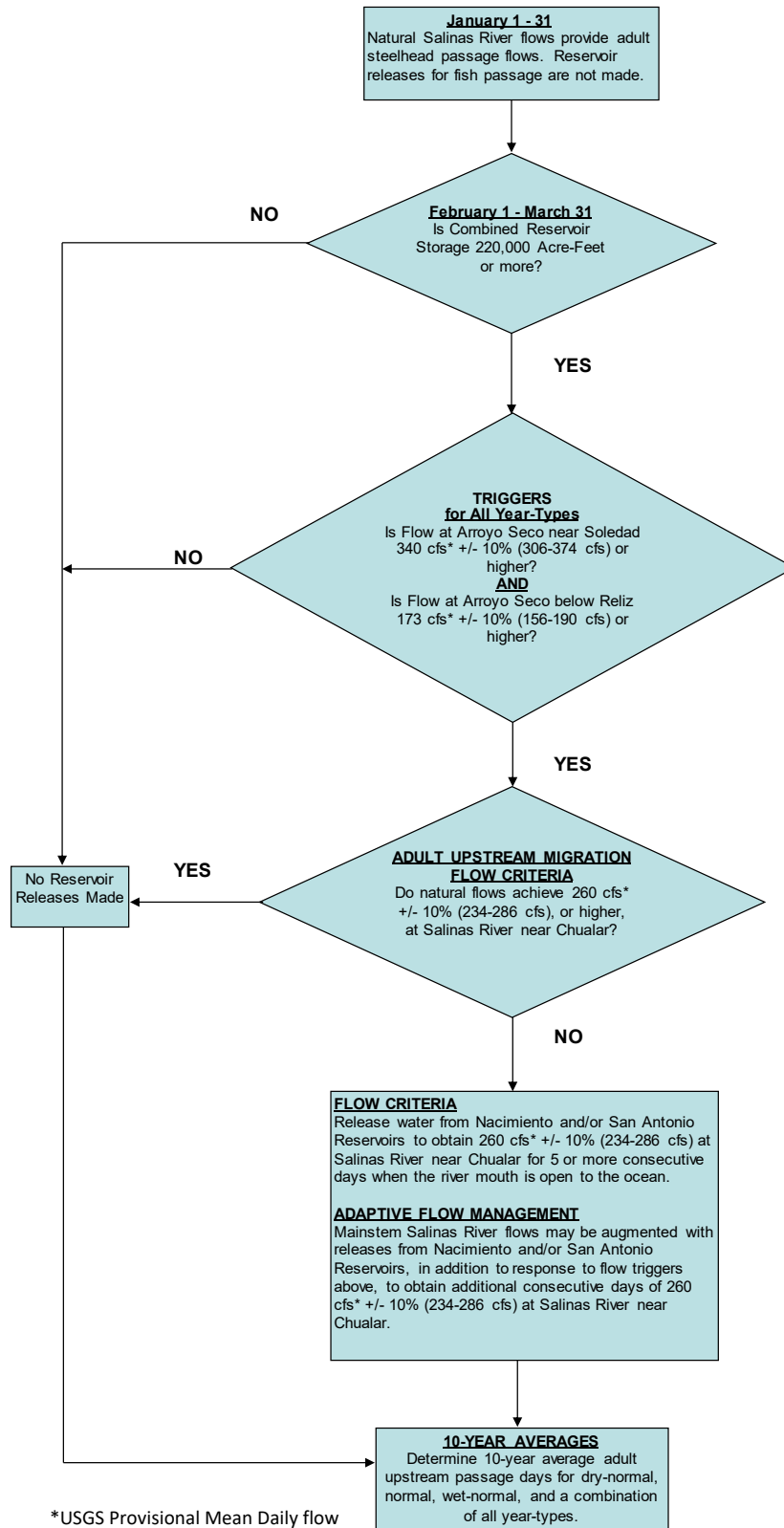
Table 2. Adult Steelhead Upstream Passage Days by Operational Year

Operational Year	Year Type Calculated from Approved USGS Streamflow	Number of Passage Days Required on a 10-year Average (Normal Year Types)	Number of Passage Days Achieved	Reservoir Releases Required to Augment Natural Flows
2010	Wet	N/A	70	No
2011	Wet	N/A	69	No
2012	Dry	N/A	0	No
2013	Dry-Normal	16	0	No
2014	Dry	N/A	0	No
2015	Dry	N/A	0	No
2016	Dry-Normal	16	0	No
2017	Wet	N/A	72	Yes

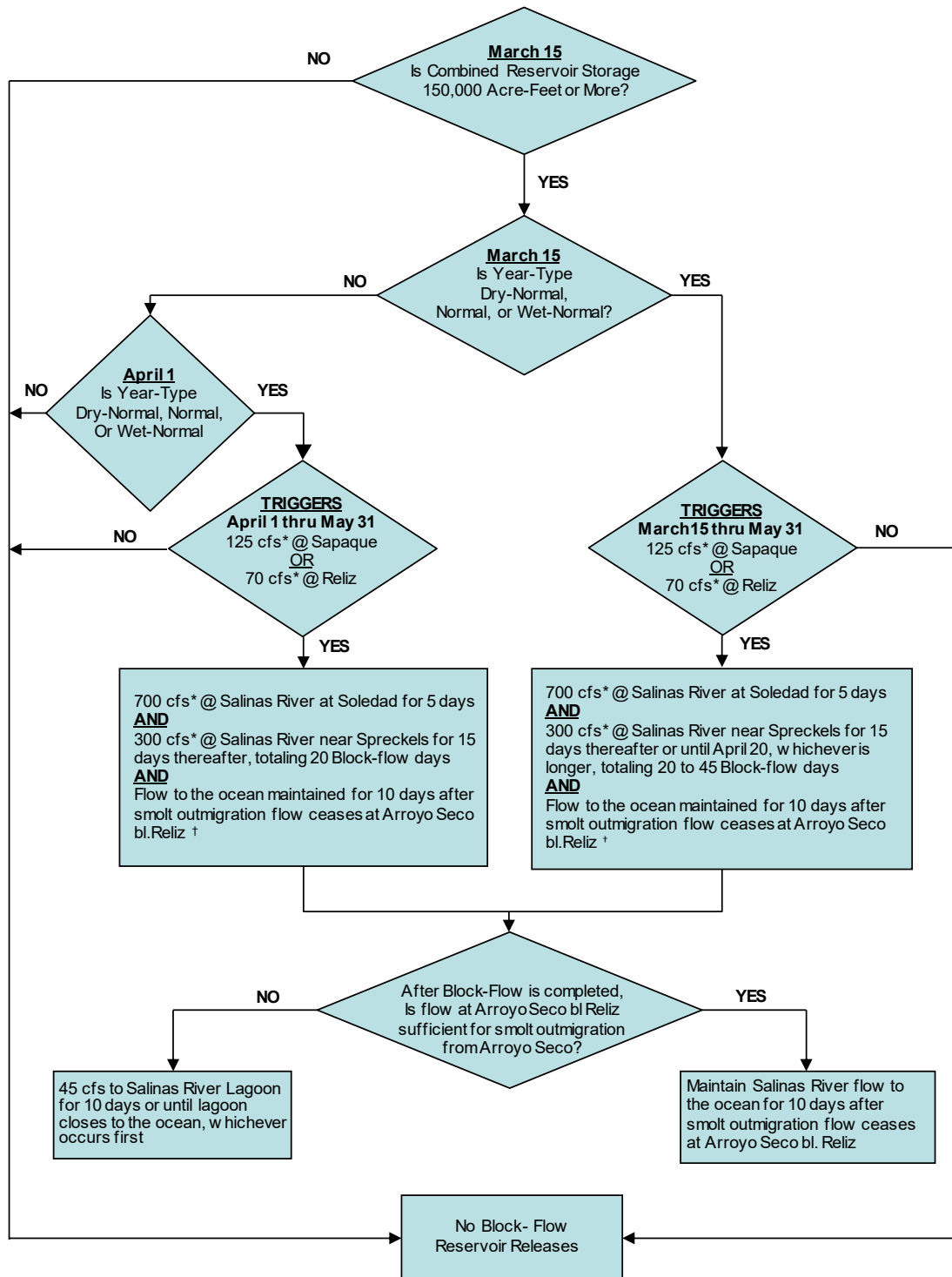
Table 3. Adult Steelhead Upstream Passage Days by Year Type

Year Type	Number of Years per Category	Number of Passage Days Required on a 10-year Average	Average Number of Passage Days Achieved (2010-2017)
Wet	3	N/A	70
Wet-Normal	0	73	N/A
Normal	0	47	N/A
Dry-Normal	2	16	0
Dry	3	N/A	0
All Year Types	8	27	26

Adult Upstream Migration Action Flow Chart



Smolt Outmigration Block Flow Action Flow Chart



*USGS Provisional Mean Daily Flow

†1 cfs USGS Provisional Mean Daily Flow at Arroyo Seco bl. Reliz stream gage will be used until further study indicates otherwise

Juvenile Downstream Passage Action Flow Chart

