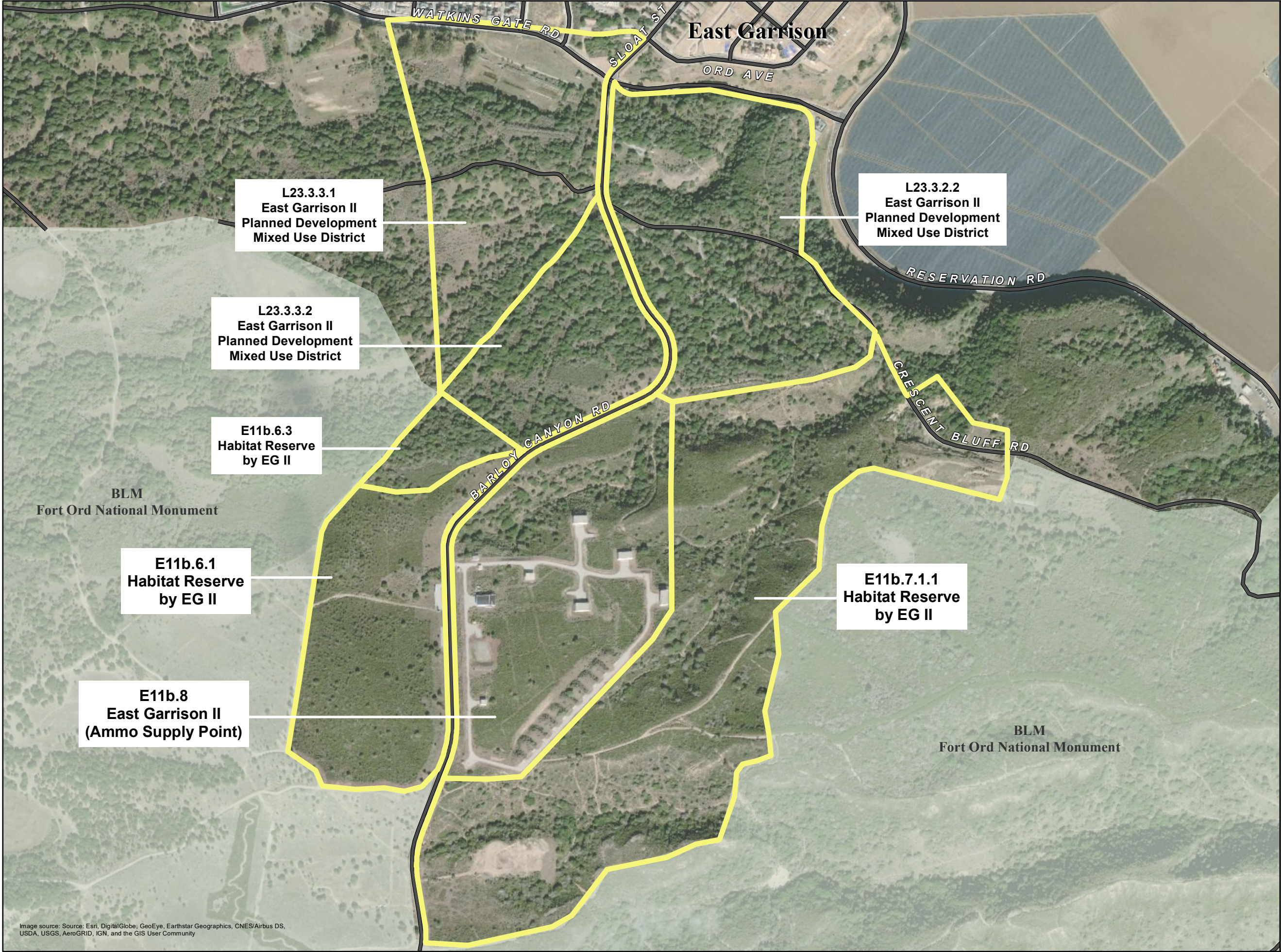


Attachment 3

This page intentionally left blank.



**Building Removal
Remaining for County**

in vicinity of East Garrison II
Former Fort Ord

August 2019

- Army Parcel with Building Removal
- Road

L23.3.3.1
East Garrison II
Planned Development
Mixed Use District

L23.3.2.2
East Garrison II
Planned Development
Mixed Use District

L23.3.3.2
East Garrison II
Planned Development
Mixed Use District

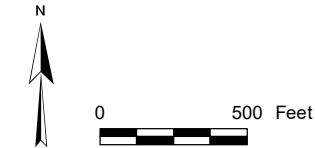
E11b.6.3
Habitat Reserve
by EG II

E11b.6.1
Habitat Reserve
by EG II

E11b.8
East Garrison II
(Ammo Supply Point)

E11b.7.1.1
Habitat Reserve
by EG II

Image source: Source: Esri, DigitalGlobe, GeoEye, Earthstar Geographics, CNES/Airbus DS, USDA, USGS, AeroGRID, IGN, and the GIS User Community



COUNTY OF MONTEREY
RESOURCE MANAGEMENT AGENCY
1441 SCHILLING PLACE 2ND FLOOR
SALINAS CA 93901
MAP PREPARED: 8/28/2019

This page intentionally left blank.