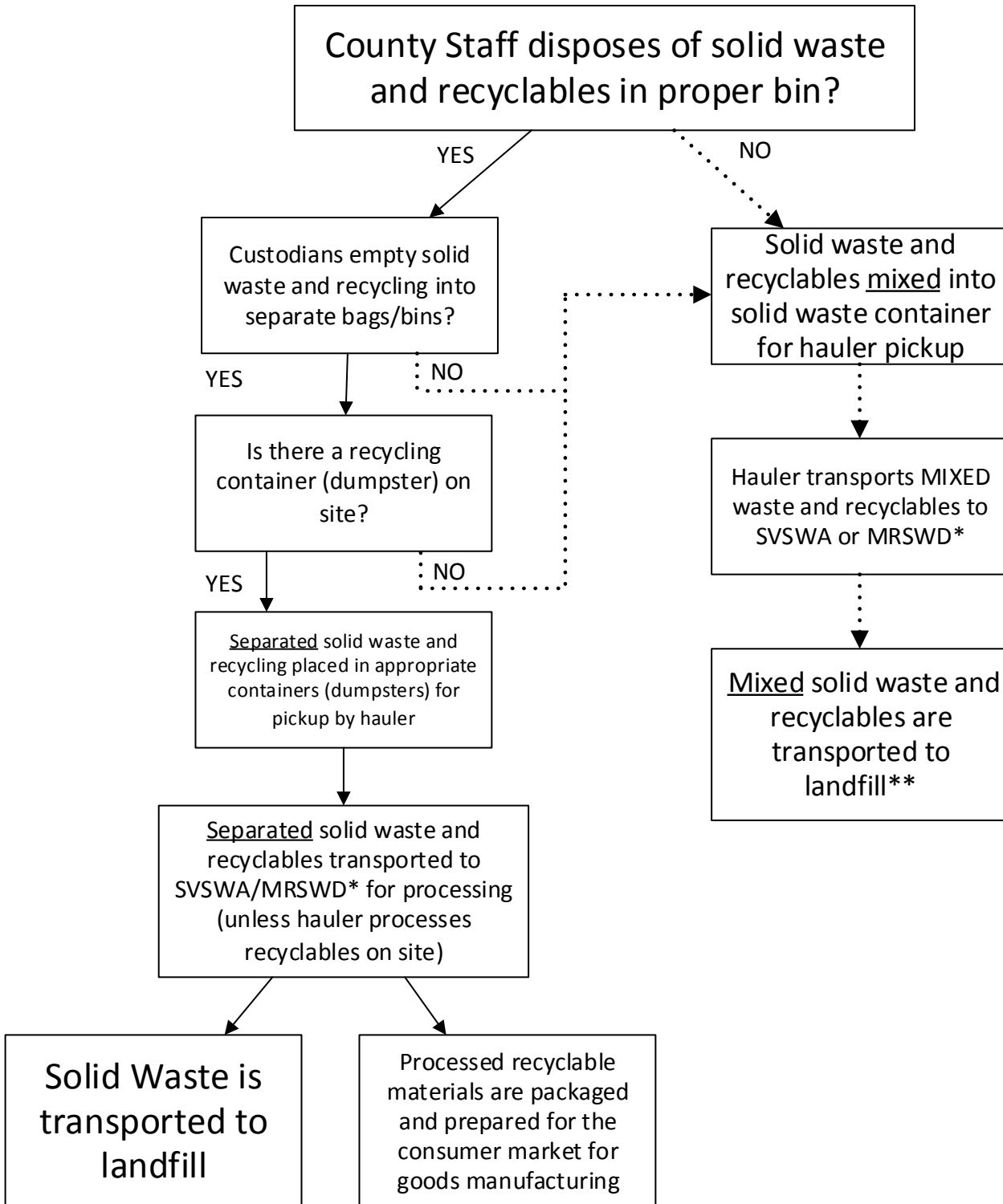


Solid Waste and Recyclable Materials Flow Chart



Description: The figure above shows the flow of solid waste and recyclable materials generated from County facilities . There are three ways recyclable materials can be transported to a landfill:

- 1) County staff doesn't sort waste
- 2) Custodial services does not keep waste separate
- 3) County facility does not have a recycling container (dumpster)

* SVSWA = Salinas Valley Solid Waste Authority; MRSWD = Monterey Waste Management District

**A low percentage of recyclable materials are separated from solid waste at after arrival at transfer station.