

# Exhibit E

This page intentionally left blank.

# Moss Landing Community Coastal Climate Change Vulnerability Report



Photo: Don Debold

JUNE 2017

CENTRAL COAST WETLANDS GROUP

MOSS LANDING MARINE LABS | 8272 MOSS LANDING RD, MOSS LANDING

Table 6. Vulnerability of Assets due to Combined Effects of Coastal Climate Change

ASSET	UNITS	TOTAL	2030 (WITH ARMOR)	2030 (NOARMOR)	2060 (NO ARMOR)	2100 (NO ARMOR)
Land Use and Buildings						
Total Buildings	Count	6,642	96	139	198	272
Residential	Count	5,815	17	21	59	113
Commercial	Count	71	25	25	28	32
Public	Count	52	3	3	6	8
Visitor Serving	Count	3	3	3	3	3
Other	Count	701	48	87	102	116
Schools	Count	5	0	1	1	1
Post Offices	Count	1	1	1	1	1
Emergency Services	Count	1	0	0	0	0
Farmland	Acres	15,393	1,991	4,731	5,290	5,532
Transportation						
Roads	Feet	687,784	20,279	50,746	73,286	95,284
Rail	Feet	45,730	7,855	11,280	15,901	24,728
Highway 1	Feet	62,949	3,894	14,464	22,780	29,040
Parks, Recreation, and Public Access						
Parks	Acres	6,513	2,547	2,584	2,746	2,834
Beaches	Acres	161	143	143	160	161
Coastal Access Points	Count	17	5	5	11	13
Parking Lots	Acres	9	2	2	5	9
Water and Utility Infrastructure						
Storm Drains	Feet	29,201	0	80	100	172
Culverts and Tide Gates	Count	29	19	20	22	24
Natural Resources						
Dunes	Acres	1,227	636	736	894	969
Critical Habitat	Acres	2,306	1,048	1,126	1,361	1,629
National Wetlands	Acres	5,889	3,382	4,074	4,387	4,495

Figure 11. Buildings within the Moss Landing Community Plan Area vulnerable to Rising Tides (Extreme Monthly High Water)

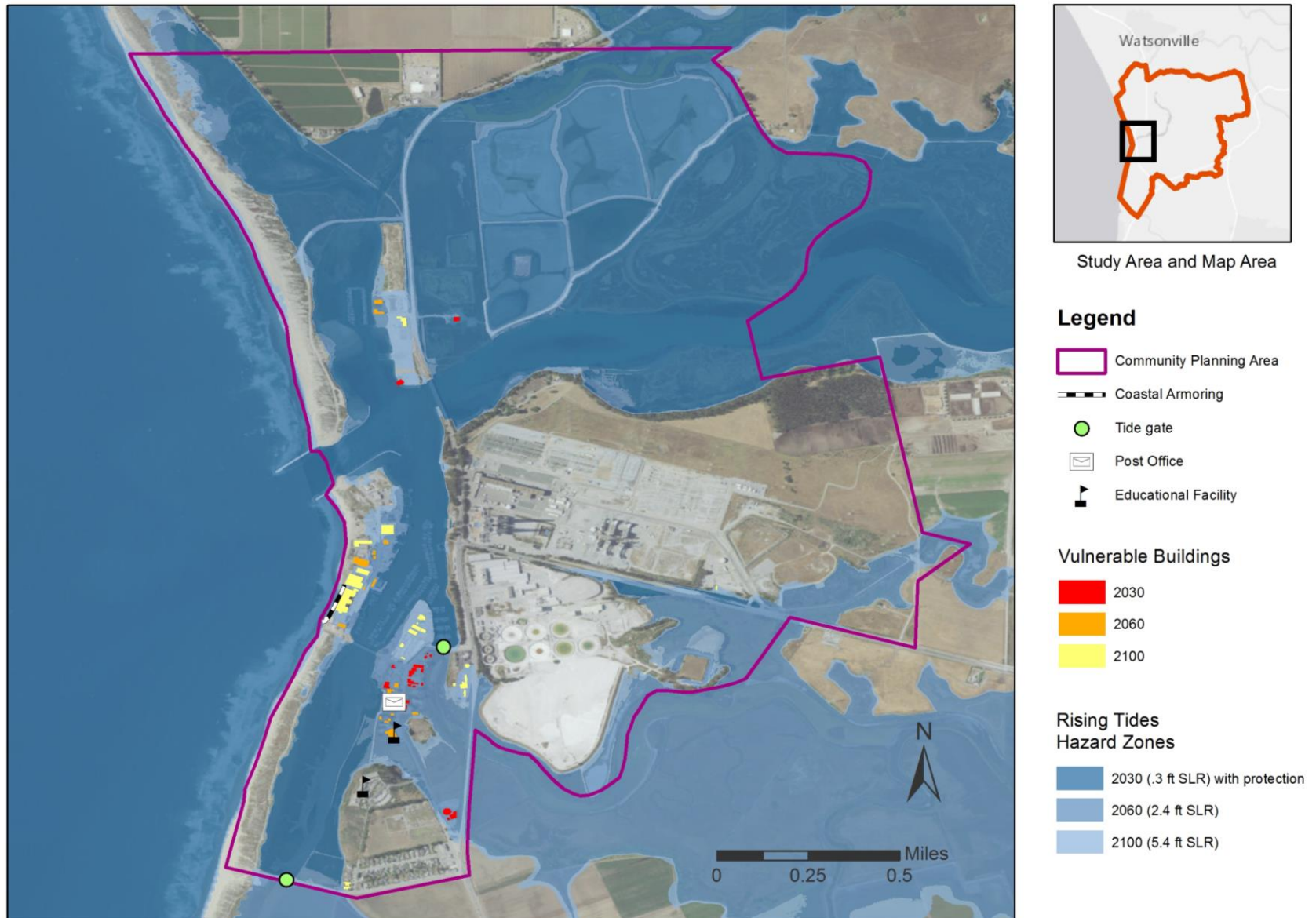


Figure 13. Buildings within the Moss Landing Community Plan Area vulnerable to Coastal Storm flooding

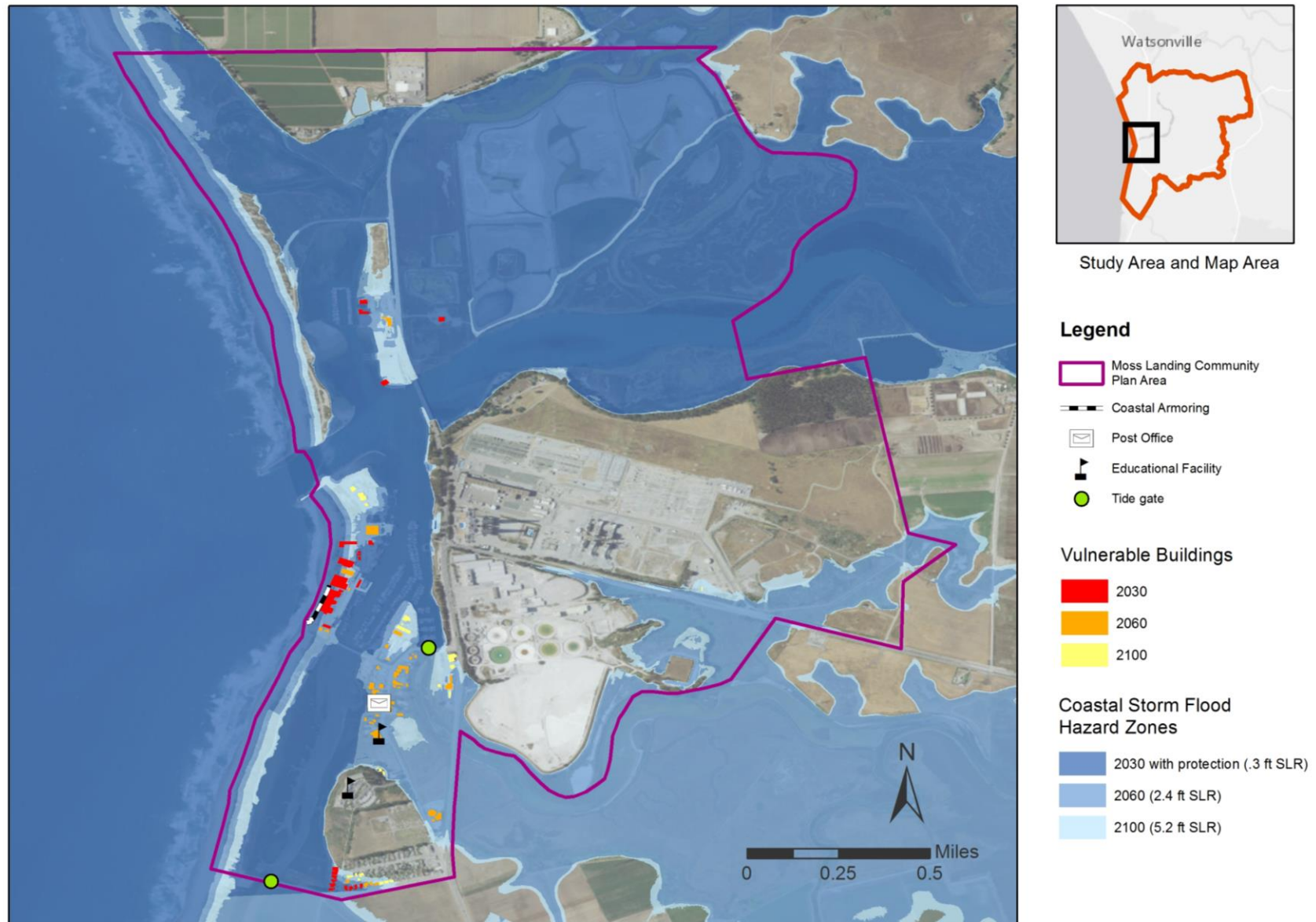




Figure 17. Buildings within the Moss Landing Community Plan Area vulnerable to Fluvial Flooding from the Reclamation Ditch

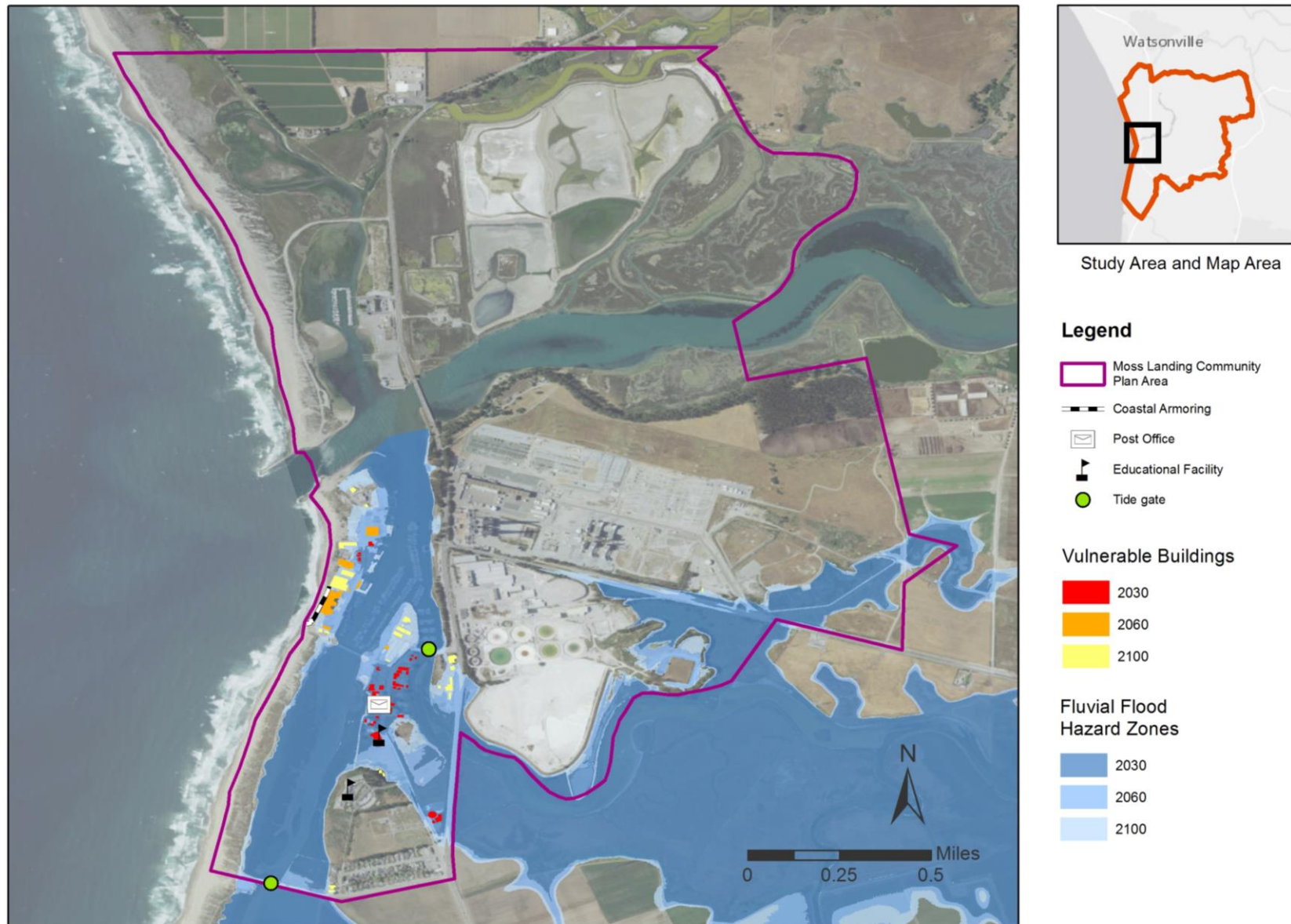


Figure 19. Buildings projected to be vulnerable to erosion within the Moss Landing Community Plan Area and Monterey Dunes Colony

