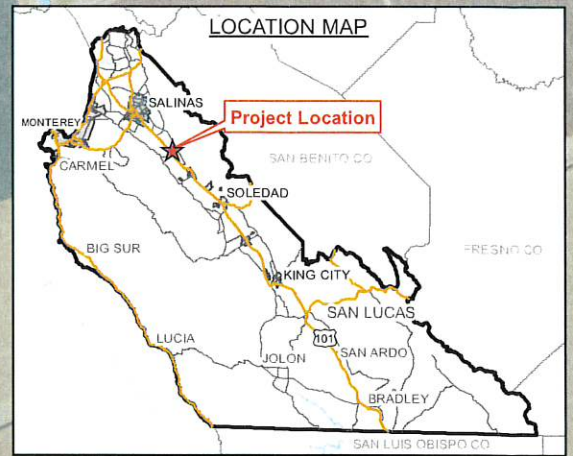
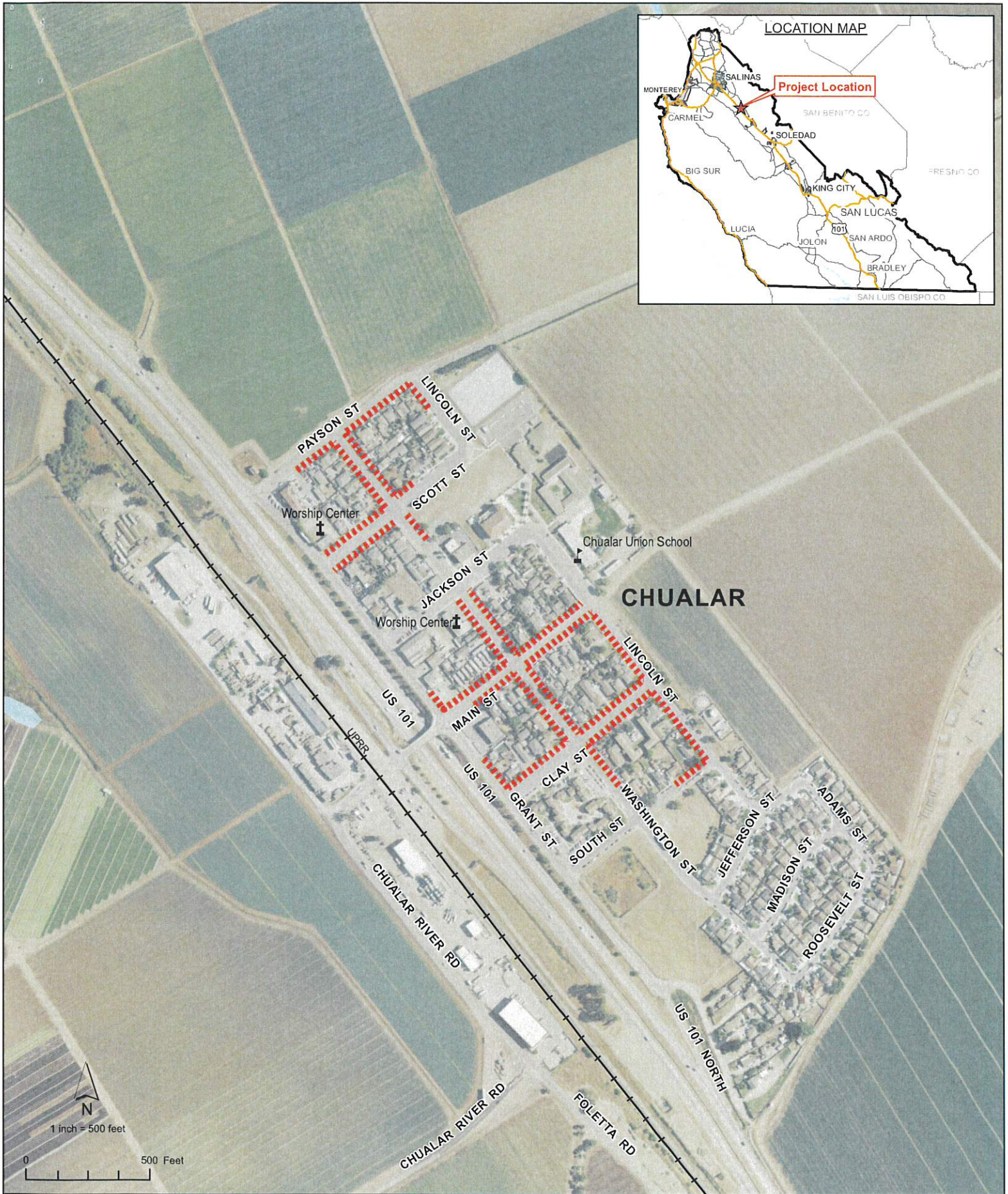


Attachment A

This page intentionally left blank.



LOCATION MAP

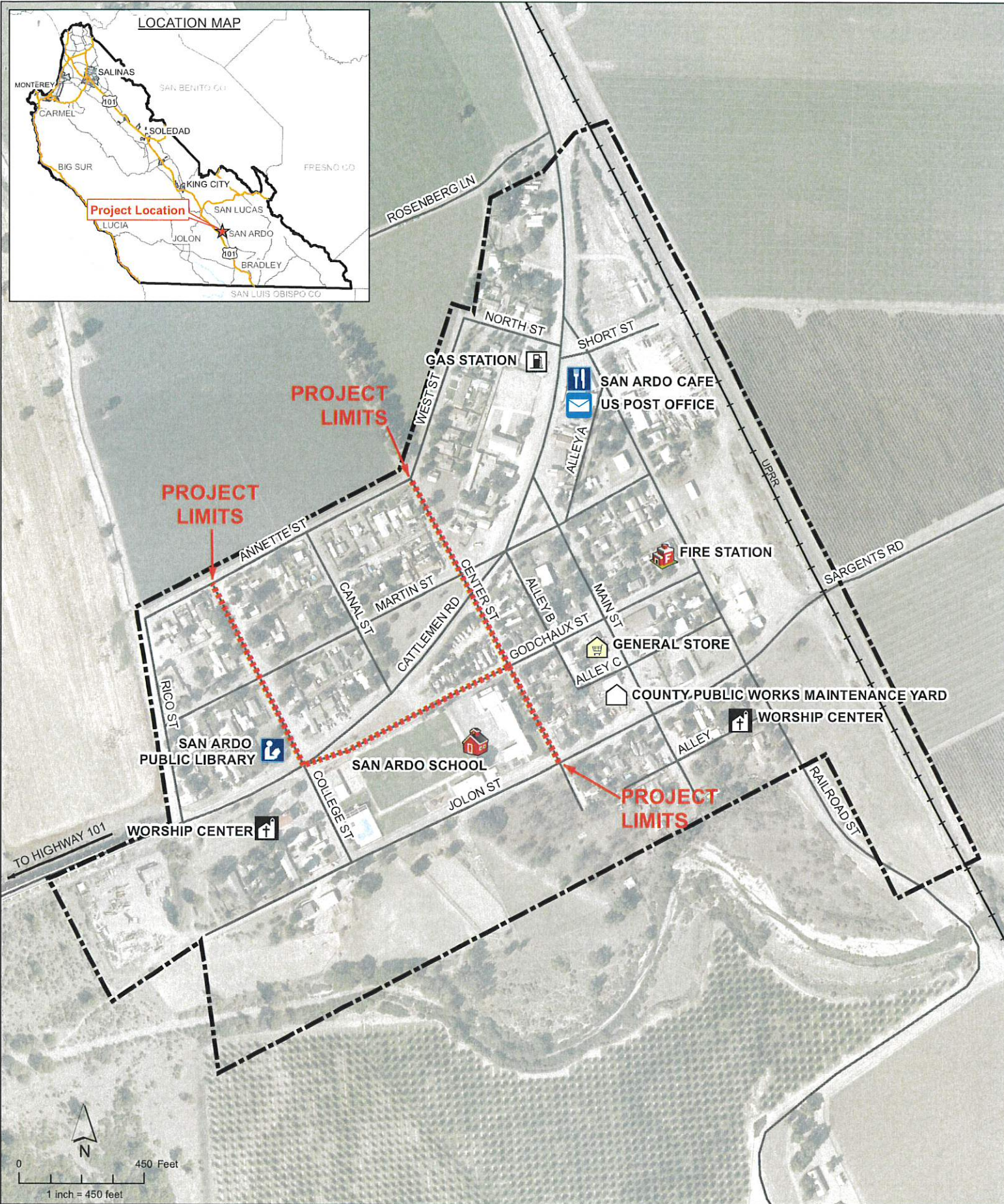
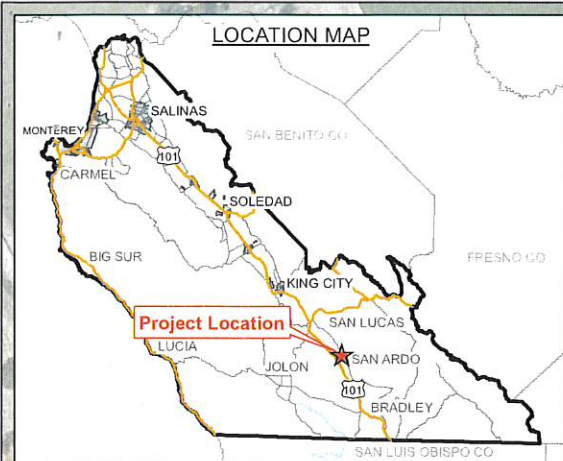
CHUALAR PEDESTRIAN IMPROVEMENT PROJECT,
AT CHUALAR COMMUNITY, UNINCORPORATED MONTEREY COUNTY, CA

Legend

Proposed Pedestrian
Improvements - Sidewalk

Imagery date: 2016





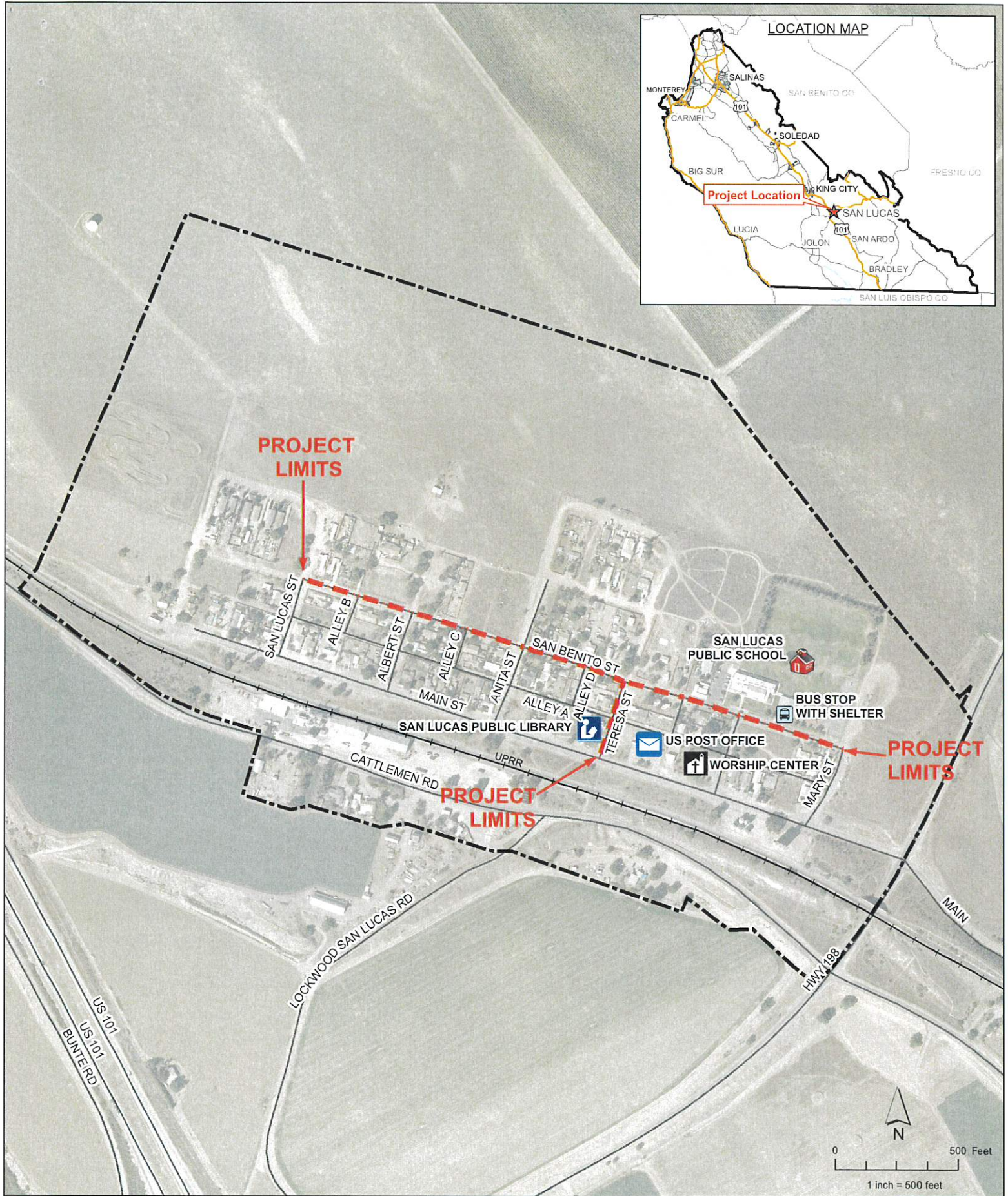
ATTACHMENT C1 LOCATION MAP

SAN ARDO PEDESTRIAN IMPROVEMENT PROJECT,
AT SAN ARDO COMMUNITY, UNINCORPORATED MONTEREY COUNTY, CA

Legend

- Proposed San Ardo Pedestrian Improvement
- San Ardo Rural Center





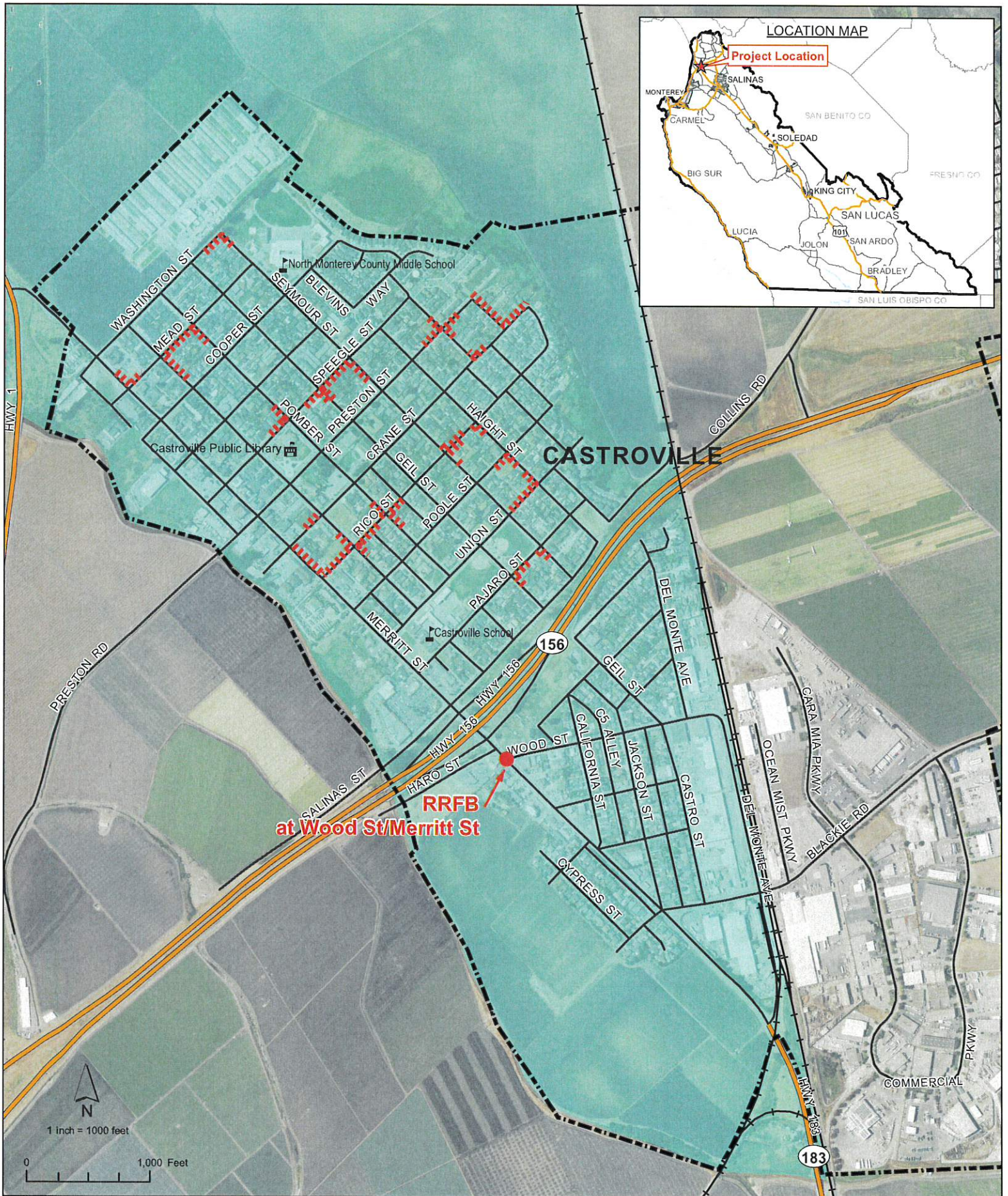
ATTACHMENT C2 LOCATION MAP

SAN LUCAS PEDESTRIAN IMPROVEMENT PROJECT,
AT SAN LUCAS COMMUNITY, UNINCORPORATED MONTEREY COUNTY, CA

Legend

- — — Proposed San Lucas Pedestrian Improvement
- - - - - San Lucas Rural Center





LOCATION MAP

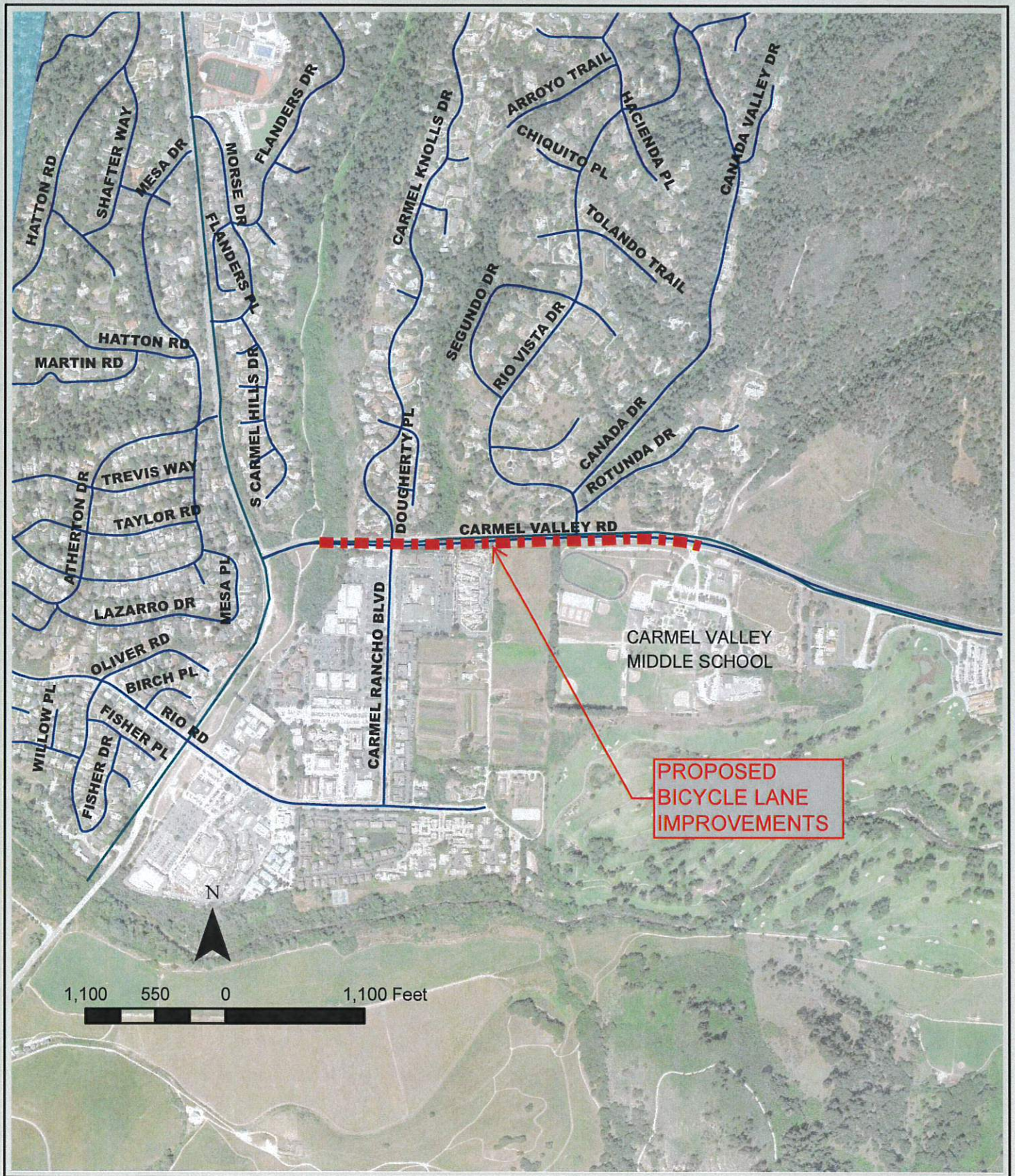
CASTROVILLE PEDESTRIAN IMPROVEMENT PROJECT,
AT CASTROVILLE COMMUNITY, UNINCORPORATED MONTEREY COUNTY, CA

Legend

- - - - - Proposed Pedestrian Improvements
- Castroville Community Area
- Disadvantaged Community



Imagery date: 2016

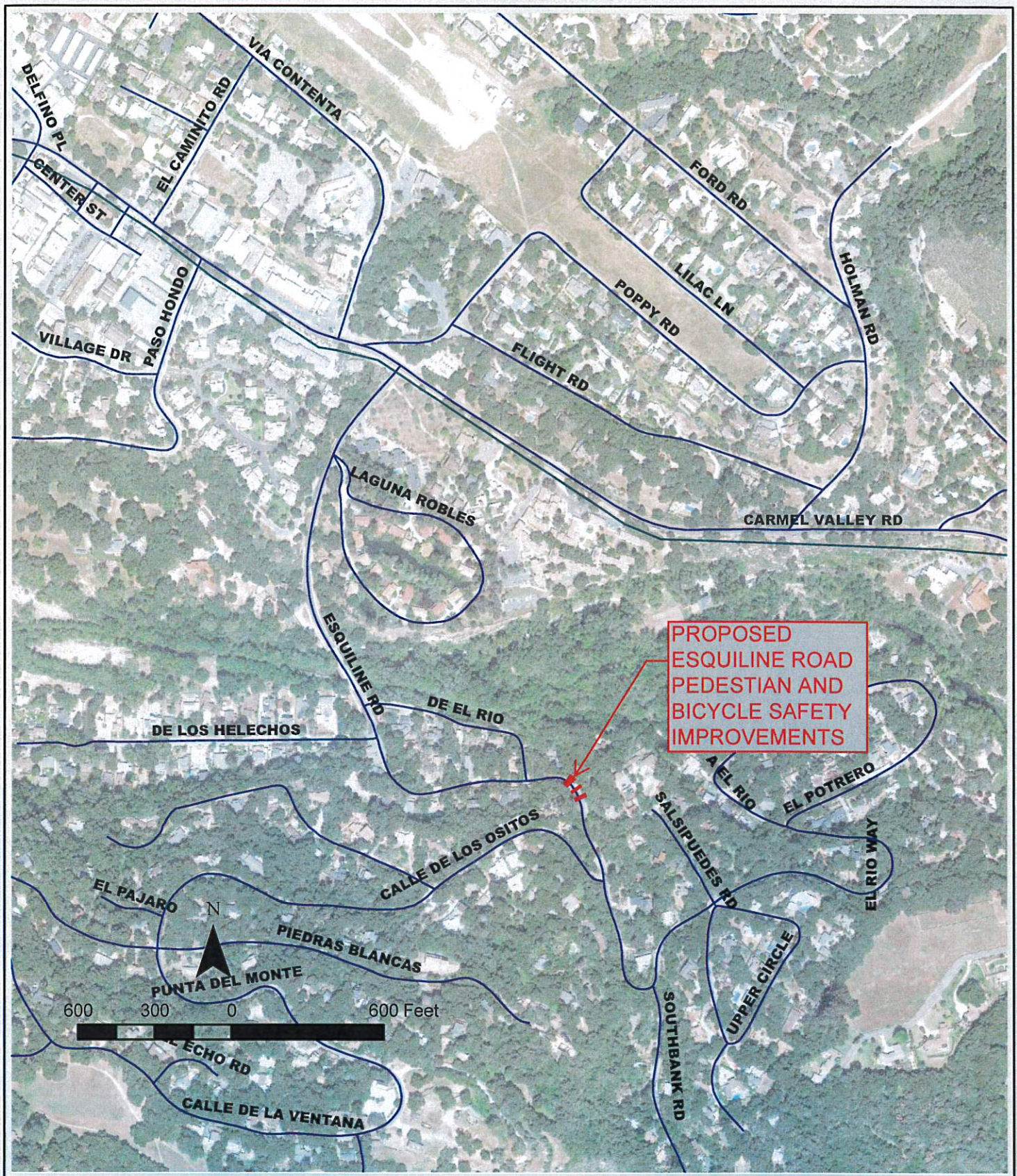


LOCATION MAP BICYCLE LANE IMPROVEMENTS CARMEL VALLEY ROAD

Legend

■■■■■ Bicycle Lane Improvements





**PROPOSED
ESQUILINE ROAD
PEDESTIAN AND
BICYCLE SAFETY
IMPROVEMENTS**

LOCATION MAP
ESQUILINE ROAD PEDESTIAN
AND BICYCLE SAFETY
IMPROVEMENTS

Legend

■■■■■ Esquiline Road Bridge Replacement

