

Exhibit C

This page intentionally left blank.

MEMORANDUM

From: Frederik Venter, PE, and Brandon Kenery, EIT | Kimley-Horn and Associates

To: Carl Pacheco | Monterey County Sheriff's Posse Inc.

Date: May 7, 2024

Re: Monterey County Sheriff's Posse Grounds - Permit PLN220125 - Mo. Co. Sheriff's Posse Response to Comments

1. Introduction

This memorandum presents a response to the comments received from the County of Monterey for Permit PLN220125 of the Monterey County Sheriff's Posse located at 395 Old Natividad Road, Salinas, CA 93906.

2. Response to Comments

PLN220125 – Mo. Co. Sheriff's Posse, dated April 19, 2024

2.1 Mo. Co. Comment: The Operations Plan for the Monterey County Sheriff's Posse Grounds Event Summary is inconsistent with the Traffic Study; the guest count and number of events do not match. The Traffic Study should use the worst-case scenario to determine the impact on the roadway system along with the Trip Generation, Distribution and Assignment, and VMT Analysis (Vehicle Miles Traveled).

2.1 KH Response: The Operations Plan Project Description and Traffic Study Project Description have been updated, so Attachment 1 and Attachment 3 are now consistent (Attachment 1. Permit PLN220125 - 2024 Operations Plan for Monterey County Sheriff's Posse, Kimley-Horn, May 7, 2024; Attachment 3. Monterey County Sheriff's Posse Grounds – Vehicle Miles Traveled and Local Transportation Analysis, Kimley-Horn, May 7, 2024). The Trip Generation, Distribution, and Assignment, and VMT Analysis assume the worst-case scenario of 2,500 attendees attending a weekend concert event (see pages 4-5 of Attachment 3).

PLN220125 Application Status and SPECIAL EVENT - 24SE00014 - SUPER BANDA FEST permit request (Email), dated February 6, 2024

The responses below and the included materials includes a resubmittal of the application for Permit PLN220125.

2.2 Mo. Co. Comment: Clarifications on the numbers of attendees at events so the Operations Plan and Traffic Study are on the same Project Description

2.2 KH Response: See KH Response 2.1 above about the Operations Plan and Traffic Study.

2.3 Mo. Co. Comment: Logistics for on-site parking and shuttles, in the form of an Onsite Traffic and Parking Management Plan, including proposed parking and/or vehicle prohibitions

2.3 KH Response: The Onsite Traffic and Parking Management Plan is on page 3 of the Operations Plan (Attachment 1), and on-site traffic management figures are included in the Traffic and Evacuation Plan included in Appendix A of Attachment 1 (Attachment 1. Permit PLN220125 - 2024 Operations Plan for Monterey County Sheriff's Posse, Kimley-Horn, May 7, 2024). The Traffic Study also details parking and traffic management under the "Event Parking Management" and "Event Traffic Management" sections on pages 7-10 of Attachment 3 (Attachment 3. Monterey County Sheriff's Posse Grounds – Vehicle Miles Traveled and Local Transportation Analysis, Kimley-Horn, May 7, 2024).

2.4 Mo. Co. Comment: Emergency Evacuation Plan prepared by a professional in the field

2.4 KH Response: The Emergency Evacuation Plan is on page 3 of the Operations Plan (Attachment 1) and emergency evacuation point figures are included in the Traffic and Evacuation Plan in Appendix A of Attachment 1 (Attachment 1. Permit PLN220125 - 2024 Operations Plan for Monterey County Sheriff's Posse, Kimley-Horn, May 7, 2024).

2.5 Mo. Co. Comment: Event Plan typical layout, like a site map, that corresponds to the Operation Plan and the Onsite Traffic and Parking Management Plan, and demonstrates how 400+ people are accommodated for an event

2.5 KH Response: See KH Response 2.3 above about the Onsite Traffic and Parking Management plan and Traffic and Evacuation Plan figures. The Large Event Plan for accommodating 400+ attendees on-site is also included on page 3 of the Operations Plan (Attachment 1. Permit PLN220125 - 2024 Operations Plan for Monterey County Sheriff's Posse, Kimley-Horn, May 7, 2024).

2.6 Mo. Co. Comment: A set of records to indicate the size and type of events that have transpired and the number of attendees, staff count and roles, and any issues that occurred/how the issues were resolved for the events that have been held at the site over time. Right now, we have a set of event permits and your "2023 event schedule." If you can fill in the gaps based off of those, it will be a good start toward the CEQA analysis of the project. Since it is now 2024, the next submittal should include a projected 2024 event schedule. Again, the 2024 event schedule should conform with the Traffic Report, Operations Plan, Event Plan typical layout, Emergency Evacuation Plan, and the Onsite Traffic and Parking Management Plan

2.6 KH Response: See the Past Event Records for data on events held from 2017 to 2023 and projected 2024 events (Attachment 2. Past Event Records (2017-2024), Monterey County Sheriff's Posse, 2024). The Operations Plan and Traffic Study event schedules are addressed in KH Response 2.1 above. A Conflict Resolution Plan is included on page 4 of the Operations Plan (Attachment 1) and an Incident Action Plan for events over 400 people is included in Appendix B of the Operations Plan (Attachment 1. Permit PLN220125 - 2024 Operations Plan for Monterey County Sheriff's Posse, Kimley-Horn, May 7, 2024).

3. Attachments

Attachment 1. Permit PLN220125 - 2024 Operations Plan for Monterey County Sheriff's Posse

Attachment 2. Past Event Records (2017-2024)

Attachment 3. Monterey County Sheriff's Posse Grounds – Vehicle Miles Traveled and Local Transportation Analysis



Attachment 1. Permit PLN220125 - 2024 Operations Plan for Monterey County Sheriff's Posse

MEMORANDUM

From: Frederik Venter, PE, and Brandon Kenery, EIT | Kimley-Horn and Associates

To: Carl Pacheco | Monterey County Sheriff's Posse Inc.

Date: May 7, 2024

Re: Permit PLN220125 - 2024 Operations Plan for Monterey County Sheriff's Posse Grounds

1. Introduction

This memorandum presents the 2024 Operations Plan for Permit PLN220125 for the Monterey County Sheriff's Posse located at 395 Old Natividad Road, Salinas, CA 93906.

2. 2024 Operations Plan

Typical Posse Grounds Events

The Sheriff's Posse grounds host a variety of events throughout the year including events such as Weddings, Baby Showers, Celebration of Life's, Fundraisers, County Parties and Meetings, Sheriff's Mounted Unit Training, Sheriff's Narcotic Classes, Salinas Police Department K-9 Unit Training, Gymkhana, Quinceanera's, Ameca Concerts, Annual Posse Big Hat BBQ, Annual Posse Car Show, Annual Jr Rodeo, Picnics, Team Building events and more.

Anticipated annual events are listed below in Table 1 for 2024.

Table 1 – Summary of Anticipated 2024 Sheriff’s Posse Events

2024 Event Description	Frequency (events per year)	Number of guests per event	Typical Day of Week	Event Hours	Event Crew	Before/After
Rental Events						
Salinas Rodeo Over-flow Camping	1	50 - 80	Weekend	24 hrs	4	--
Sherriff's Dept./ Agencies	1	30 - 100	Weekday	12 - 5	2	11-12 / 5-6
4-H	12	30 - 50	Weekday	5 - 9	--	--
Family Parties	3	100 - 150	Weekday	12 - 8	1 - 3	9-12 / 8-9
Equestrian Arena Events	43	100 - 200	Weekend	4 - 9	6	12-5
Baby Showers/ Birthdays/Reunions	8	50 - 200	Weekend	12 - 7	11 - 14	12-2 / 8-9
Fund Raisers	4	100 - 2,000	Weekend	11 - 8	12 - 30	7-9 / 5-7
Celebration Of Life	6	80 - 250	Weekday	10 - 6	10	8-10 / 6-7
Retirement Parties	2	80 - 200	Weekday	1 - 5	10	12-1 / 6-7
Quinceanera	4	150 - 300	Weekend	2 - 9	24 - 26	7-2 / 10-12
Weddings	5	100 - 200	Weekend	2 - 9	27 - 29	7-2 / 10-12
Company Picnic's	4	400 - 2,000	Weekend	11 - 5	30	8-12 / 5-7
Concerts	6	1,200 - 2,500	Weekend	12 - 7	38 - 45	6-12 / 6-9
Sheriff’s Posse Events						
Trash/Other services	52	--	Weekday	10 AM	--	--
Posse stall traffic	365	--	Weekly	24 hrs	--	--
Meetings	23	16 - 30	Weekdays	6 - 9	2	3-5
Dances	2	100 - 250	Weekend	2 - 9	4	12-4
Car Show	1	80 - 150	Weekend	10 - 4	6	Day before 8hrs
Jr Rodeo	1	100 - 250	Weekend	7A - 8P	8	Day before 8hrs
Big Hat	1	400 - 600	Weekend	5 - 10	30	8-5/10-12

Event Attendance

Events range from 25 to 2500 guests, depending on the type of event held. See Table 1 above.

Onsite Traffic and Parking Management Plan

Onsite Traffic is primarily managed at designated Traffic Control (TC) points throughout the site (Appendix A. 2024 Traffic and Evacuation Plan for Monterey County Sheriff's Posse). Each TC shall be always staffed with two personnel during the event. Depending on the number of guests, only parking lots needed to accommodate the number of cars will be opened. For most events this will be Parking Lot 1, which is accessed through TC 2. Larger events, like concerts may use both Parking Lot 1 and Parking Lot 2 depending on ticket sales.

To facilitate parking management, cones and caution tape is used at the fence line of the site to insure no one parks on the roadside. Parking lots are chalked, and several parking staff are assigned to help vehicles park in each active parking lot.

All parking lots will accommodate cars, pickup trucks, and RV's. Parking Lots 2, 3, and 4 will additionally accommodate Horse Trailers and Tractor Trailer rigs.

Outside of the Posse Grounds, no major arterials are affected by any event held at the Posse Grounds.

Large Event (400+ Attendees) Plan

Detailed event plans are submitted for each event for more than 400 people. Special events permits as well as ABC and law enforcement permits must be approved and submitted to the administration office prior to any events being held at the Posse Grounds.

Events larger than 400 people will require event organizers to staff the Traffic Control points with at least two qualified personnel at all times. These qualified personnel shall consist of either private security, MCSP members, MCSO Explorers, or event volunteers. A pre-event briefing shall be required of the event organizer to fully instruct those manning the TC points as to their duties and responsibilities with emphasis on emergency evacuation through gates at TC 3A, TC 3B, and TC 4.

Emergency Evacuation Plan

There are four primary egress evacuation points on Old Natividad Road (TC 2, 3A, 3B, and 4). TC 3A and TC 3B will be utilized for emergency egress purposes only. They provide the fastest and smoothest exit points for safe evacuations in the event of an emergency. Two personnel will be staffed at each exit point to facilitate evacuation. Attendees in Parking Lot 1 will be directed to evacuate through TC 2. If Parking Lots 2, 3, or 4 are used, personnel staffing these posts shall be instructed to direct evacuees through the gate at TC 4.

Live Music and Audible Noise Program Schedule

Celebration of Life, Fundraisers and Car Shows may have music, Weddings, and Quinceanera's may have a DJ or singer at their event. Ameca Concerts and Big Hat BBQ have live bands. Music is monitored at every event with onsite equipment so that levels do not exceed 85 decibels at 50 feet from the source. Any violations are brought to the attention of the promoter and are immediately dealt with.

Conflict Resolution Plan

Problems which have typically occurred in the past include noise complaints from one specific individual who has an aversion to Latino Music. We have spoken with this person on numerous occasions however they are adamant regarding their concerns even though our noise readings are within specified legal limits.

Other concerns have included community complaints regarding not allowing minors into events where alcohol is sold. Large event problems such as public intoxication requiring professional security or law enforcement on site have always been handled by security or contracted law enforcement. Traffic and parking issues are always handled by event promoters or posse members to ensure smooth ingress and egress.

Security Plan

Each event that requires a special events permit is required to provide an approved security plan. Events less than 100 guests do not require a security plan. The facility is self-contained with only two access points open to the public. The primary access point for major events to the main parking lot (Parking Lot 1) will be staffed by parking personnel and at least one security person at TC 2. From the main parking lot to the facility, an additional entry point for tickets is staffed with security. Outside security companies are used for any event over 50 guests, and our rule is to have at least 1 guard per 50 attendees. See Incident Action Plan (Appendix B. Incident Action Plan) for major events over 400 people.

Alcohol Policy

All events where alcohol is served will be approved first with ABC and the Sheriff's Office who will review and require either private security or law enforcement presence. The exact number of required law enforcement or private security officers will vary by event depending on the type of event and numbers expected. Any event held at the Posse Grounds that sells alcohol is required by the Posse to get a permit from ABC or no alcohol will be sold.

Lighting and Signage Plan

Most events are held during the day and do not require additional lighting. However, when additional lighting is needed for events extending beyond sunset ample lighting already exists in and around the club house. Generators in the parking lots are required when events extend beyond sunset. The number of generators will vary depending on the number of cars, but we require one lighting system per 50 cars.

Restroom Plan

Posse Grounds has flush toilets, but with any event over 200 guests, portable toilets are provided to accommodate the crowd.

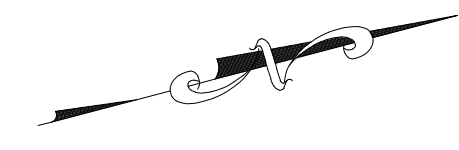


3. Appendix

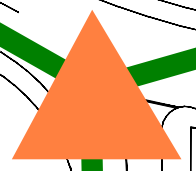
Appendix A. 2024 Traffic and Evacuation Plan for Monterey County Sheriff's Posse

Appendix B. Incident Action Plan

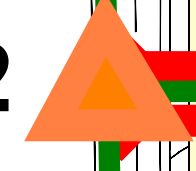
Appendix A. 2024 Traffic and Evacuation Plan for Monterey County Sheriff's Posse



TC 1



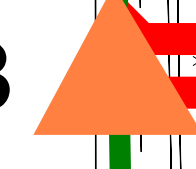
TC 2



TC 3A



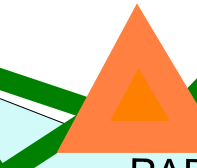
TC 3B



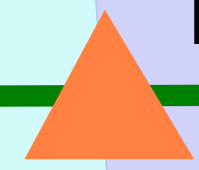
TC 4



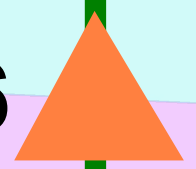
TC 5



TC 7



TC 6



OLD NATIVIDAD ROAD

NATIVIDAD ROAD

OLD STAGE ROAD

ENTRANCE
EXIT

PARKING LOT 1
TOTAL NUMBER OF VEHICLES = 1152
PARKING LOT # 1 = 441,000 SF

ENTRANCE
EXIT

ADA PARKING STALLS

FIRE LANE

EMERGENCY ENTRANCE

DRINKS VENDER

FOOD VENDERS

TICKET OFFICE

SANITARY FACILITIES

GA

VIP AREA

STAGE

MONTEREY COUNTY HALL

GA

STAGE

ENTRANCE
EXIT

PARKING LOT 2
TOTAL NUMBER OF VEHICLES = 432
PARKING LOT # 2 = 252,000 SF

211061028000

211061021000

211061020000

211061018000

211061019000

211061013000

211061012000

211071001000

211071002000

21107101000

211071008000

211071004000

211061026000

211061002000

211061003000

211061023000

211061024000

PARKING LOT 4
TOTAL NUMBER OF VEHICLES = 770
PARKING LOT # 4 = 303,000 SF

PARKING LOT 3
TOTAL NUMBER OF VEHICLES = 770
PARKING LOT # 3 = 306,000 SF

RODEO STANDS
1700 Seats Approx.

EMERGENCY ENTRANCE

PEDESTRIAN GATE

GATE

GATE

FIRE LANE

GATE

GATE

GATE

GATE

GATE

GATE

GATE

GATE

GATE

GATE

GATE

GATE

GATE

GATE

GATE

EMERGENCY ENTRANCE

PEDESTRIAN GATE

GATE

GATE

FIRE LANE

GATE

GATE

GATE

GATE

GATE

GATE

GATE

GATE

GATE

GATE

GATE

GATE

GATE

GATE

GATE

SITE LAYOUT
SCALE = 1" = 100'

Traffic Control Plan

Site Overview

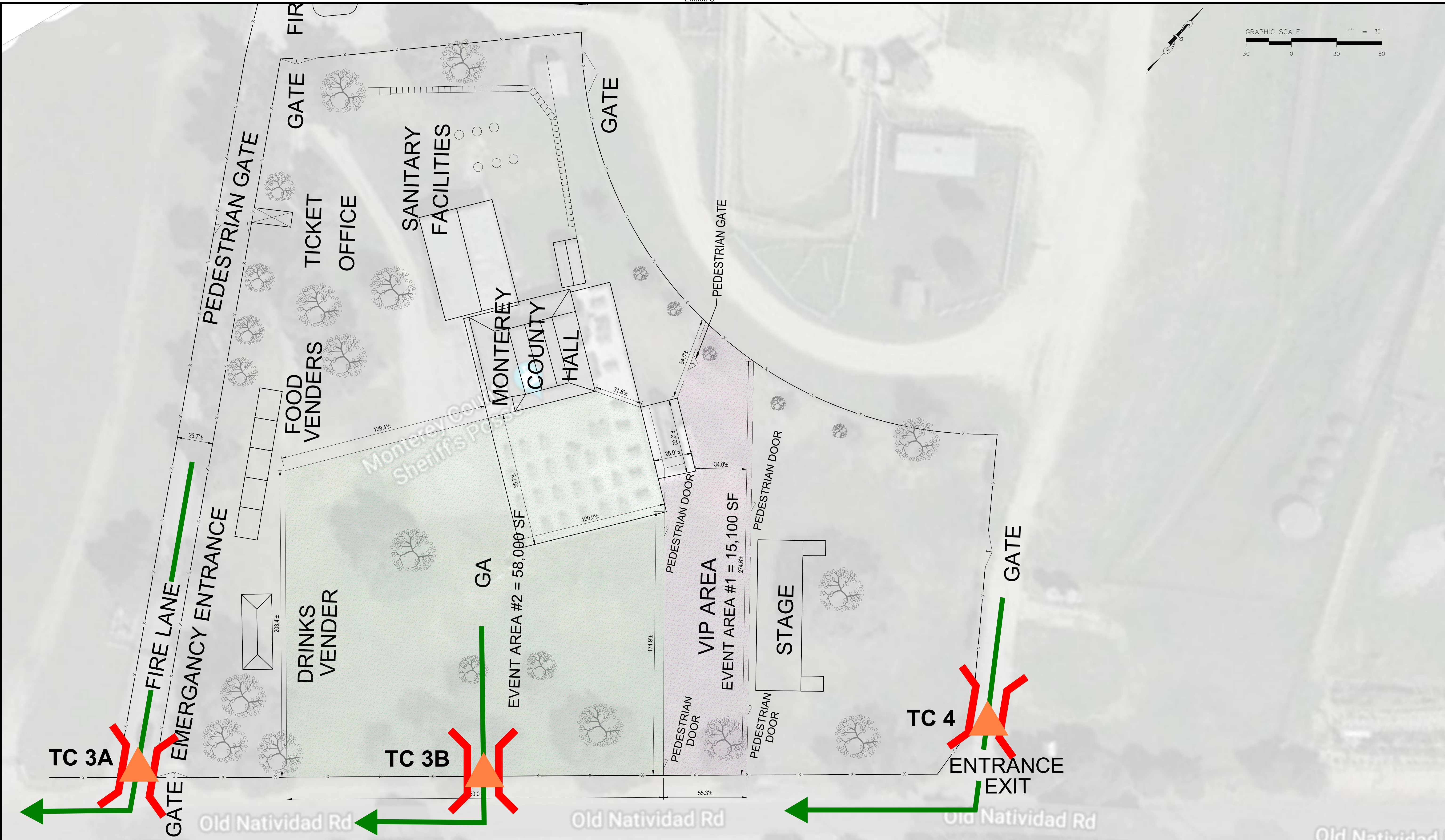
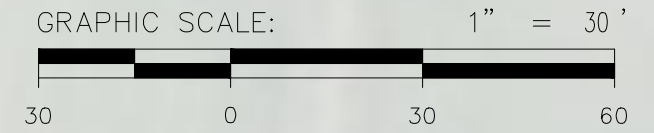
- Key**
- Traffic Control Point
 - Emergency Egress Point

DESIGNED BY:	NO.	DATE	REVISION
E. RIZO			
DRAWN BY:			
E. RIZO			
CHECKED BY:			
E. RIZO			
CAD DWG NAME:			
XXX			

**MONTEREY COUNTY SHERIFF'S POSSE
GROUNDS**

SITE LAYOUT PLANS

SCALE: AS NOTED
DATE: OCTOBER 15, 2021
SHEET: SHEET 1
SHEET 1 OF 2



EVENT LAYOUT
SCALE = 1" = 30'

C:\Users\rizo\Desktop\Edgard\GF Layout.dwg, 10/16/2021 11:19:58 AM, DWG To PDF.pc3

MONTEREY COUNTY SHERIFF'S POSSE GROUNDS REV 6/2/21

<h2>Traffic Control Plan</h2> <h3>Events Area</h3>	<p>Key</p> <ul style="list-style-type: none"> ▲ Traffic Control Point ⌋⌋ Emergency Egress Point 	<table border="1" style="width: 100%; border-collapse: collapse;"> <thead> <tr> <th>DESIGNED BY:</th> <th>NO.</th> <th>DATE</th> <th>REVISION</th> </tr> </thead> <tbody> <tr> <td>E. RIZO</td> <td></td> <td></td> <td></td> </tr> <tr> <td>DRAWN BY:</td> <td></td> <td></td> <td></td> </tr> <tr> <td>E. RIZO</td> <td></td> <td></td> <td></td> </tr> <tr> <td>CHECKED BY:</td> <td></td> <td></td> <td></td> </tr> <tr> <td>E. RIZO</td> <td></td> <td></td> <td></td> </tr> <tr> <td>CAD DWG NAME:</td> <td></td> <td></td> <td></td> </tr> <tr> <td>XXX</td> <td></td> <td></td> <td></td> </tr> </tbody> </table>	DESIGNED BY:	NO.	DATE	REVISION	E. RIZO				DRAWN BY:				E. RIZO				CHECKED BY:				E. RIZO				CAD DWG NAME:				XXX				<p>MONTEREY COUNTY SHERIFF'S POSSE GROUNDS</p>	<p>SCALE: AS NOTED</p> <p>DATE: OCTOBER 15, 2021</p> <p>SHEET: SHEET 2 OF 2</p>
			DESIGNED BY:	NO.	DATE	REVISION																														
E. RIZO																																				
DRAWN BY:																																				
E. RIZO																																				
CHECKED BY:																																				
E. RIZO																																				
CAD DWG NAME:																																				
XXX																																				
			<p>EVENT LAYOUT PLANS</p>																																	

Appendix B. Incident Action Plan

INCIDENT ACTION PLAN (IAP)

VENUE

Monterey County Sheriff Posse Grounds

395 Old Natividad Rd, Salinas, CA 93902

(831)444-6267

Monterey County

Exhibit C
PRIMARY OBJECTIVES

- Protecting the safety and health of all guests, staff, volunteers, and the general public.
- Protecting the property, resources, and mission of the organizations that we work with.

EVENT COORDINATORS - KEY INDIVIDUALS – ASSISTING ORGANIZATIONS

Event Director- TBD

Security Director-TDB

Local Law Enforcement-Monterey County Sheriff Department

Emergency Medical Services-TBD

ENTRY TO VENUE

Entry to the venue for the public will be through the venue's main entrance on the west side of the property. Emergency vehicles can enter the venue through here. Labeled on map as Main Entry/Exit. Access by Old Natividad Road.

Entry to the venue by individuals assisting, planning, operating, managing, any part of the event, will be through the main entrance and or through the East entrance. Access by Old Natividad Road.

EXIT FROM VENUE

Egress from the venue for the public will be through the venue's main exit on the west side of the property. Labeled on map as Main Exit. Egress from the venue by individuals assisting in, planning, operating, managing, any part of the event, will be through the Main or East exit.

PARKING

Parking will be designated and maintained by event coordinator and be located to the west of the venue. Vehicles will exit onto Old Natividad Road and then onto Natividad Road.

COMMUNICATIONS PLAN

Event staff and management will primarily communicate through radio. Secondary will be cell phones.

Security staff will use channel - TDB

Management Staff will use channel - TDB

EMS Staff will use the same channel as the security staff

Law enforcement will be contacted on site directly or through 911

Emergency Contingencies

In the case of a general evacuation all attendees are encouraged to move directly away from the event area. Event staff will assist in directing guests through the proper exits in an orderly as possible manner. During a general evacuation, all guests will be asked to leave the property and only coordinators, event staff and emergency services will be allowed within the inner, fenced in part of the venue. The central meeting point will be at the entrance by the ticket booth.

Medical Call (911):

If an emergency medical call is placed by a member of the event team, event staff and security will assist in moving, if possible, the affected person to the main exit of the venue. At the same time a message will be sent to security leads and event coordinators to meet at the main exit to assist with triage management. Security shall then move closest attendees away from the situation and flag down on site EMS and/or support resources. If the medical call is minor (as determined by on-site certified EMT and EMS company) it will be handled by on-site medical. If the medical call is beyond the scope of on-site medical, treatment is started by medical company. Security shall then assist in crowd control, move closest attendees away from the situation and assist in egress of EMS and/or support resources.

Medical Call (via internal request)

If a medical call comes into security team by guest or staff, on-site medical team will be dispatched to triage the situation. If the medical call is minor (as determined by on-site certified EMT and EMS company) it will be handled by on-site medical. If the medical call is beyond the scope of on-site medical, treatment is started by medical company. Security shall then assist in crowd control, move closest attendees away from the situation and assist in egress of EMS and/or support resources.

Fire Call (911 or via internal request)

Security lead will dispatch closest security officer to locate the incident and report on conditions. Security and event staff shall then move closest attendees away from the situation and flag down additional resources. Depending on scope of incident, all security will be notified with directions which can include pausing event, limited evacuation of attendees in affected area and rapid evacuation of participants proximal to the incident.

Attendee Altercation

Once a call comes in of an altercation, security lead will dispatch closest security officer to locate the incident, affected persons and then report on conditions. The closest security officer will also be notified to visually find the incident but NOT engage. Depending on scope of incident, all security and event staff will be notified with directions which can include pausing event, limited evacuation of attendees in affected area and rapid evacuation of participants proximal to the incident. Additional security will also be dispatched to the area for additional support. If it can be safely done, security shall remove affected persons from the venue and call 911 for additional resources if needed.

Intoxicated Adult

Once a call comes in of an intoxicated adult, security lead will dispatch closest security officer to locate the incident, the affected persons and then report to the security director on conditions. The closest security officer will also be notified to visually find the incident but NOT engage. Additional security will be dispatched to the area for additional support. If it can be safely done, security shall remove affected persons from the venue and call 911 for additional resources if needed.

Exhibit C

Intoxicated Minor

Once a call comes in of an intoxicated minor, security lead will dispatch closest security officer to locate the incident, the affected persons and then report to the security director on conditions. The closest security officer will also be notified to visually find the incident but NOT engage. Additional security will be dispatched to the area for additional support. If it can be safely done, security shall remove all affected persons from the venue and call 911 for additional resources.

Lost Child

An immediate call will be made to the security director that there is a missing child. The reporting party stays with the parent/guardian and gets following information:

Name, Age, Clothing description, Hair color, Ethnicity, Last known location

The security director will dispatch security, event staff and request onsite law enforcement resources to blanket the area to search for the child. The reporting party stays with the parent until the security director arrives or local law enforcement assumes command.

Found Child

The reporting party will notify the security director that a child has been found and identify their location. Security will be dispatched to the location and bring the child to the main entrance of the venue. A security director or security lead will stay with the child until that child is physical re-united with parent. The security director will notify security and event staff that a child was found and to report if anyone is looking for their child. This is NOT a critical incident as the child is in a safe environment.

Suspicious Item

If a participant or attendee identifies a suspicious item inside the venue, event staff will immediately call security director who will then dispatch security to the location to investigate the situation further. The closest security will also be notified to visually find the item but NOT tamper with it. If appropriate staff member should ask members of the public to step away WITHOUT alarming the public. If further investigation of the item is needed, local law enforcement will be requested.

Potential/Confirmed Active Shooter

If there is notice by anyone that there is an active shooter, security staff is to immediately contact security director and report their location and that there is POTENTIAL of an active shooter (unless staff member has eyes on shooter and/or definitive proof of shooter, i.e. victims,). If confirmed see-Confirmed Active Shooter. If NOT confirmed, then an all-clear will be given and then event staff is to calm attendees who might have been alarmed by initial calls. Security will also be dispatched to help address questions or calm attendees.

Confirmed Active Shooter:

If there is a confirmed active shooting incident, all staff is to immediately listen for directions. ONLY if you have direct eyes on the shooter should you speak on the radio, all others simply LISTEN for directions. Once the security director or local law enforcement can confirm the location of the shooter, a general evacuation order will be sounded with directions on which way to evacuate the public to ensure they do not go toward the incident. Security director will call 911 to request support. Additional security will be dispatched to the area for support.

Exhibit C

GUEST SAFETY RULES

We believe that the safety of our staff, guests and vendors is the most important thing we share. To help with that safety, below are some guidelines based on courtesy, common sense, state and municipal laws as well as some rules that we enforce to ensure that everyone remains safe during their visit.

- Service animals and any other types of animals must be continuously restrained so that they are under the immediate physical control of their escort at all times.
- No pets.
- Food or drink from outside the venue is not allowed.
- You may not ride bicycles, skateboards, hover boards, roller skates or any other mechanical device except for those medically approved for the physically limited and children's strollers.
- Smoking of any sort and vaping are prohibited by law except in designated areas.
- Distribution of fliers and handbills is not permitted.
- Alcohol not purchased on site from licensed vendors is not permitted per state law.
- Coolers, bags, strollers or items that could be used for storage are subject to search.
- Amplified sound devices that are not part of planned shows are not permitted.
- There are backstage areas of the festival where guests are not permitted.
- Vendors who are not registered and approved by the event coordinators and management are forbidden on the property. Law enforcement will be contacted to remove unwanted individuals from the property if they fail to leave.
- All persons are subject to search.
- Weapons, firearms, knives or sharp objects are prohibited.
- There are no exit and re-entry privileges.
- Pepper spray or mace of any kind is prohibited.

A sign with rules will be stationed at the entrance of the venue

Attachment 2. Past Event Records (2017-2024)

Exhibit C

Monterey County Sheriff's Posse Grounds Past Event Records (2017-2024)

	Projeition								Guests	Event Hours	Security	Event Crew
	2024	2023	2022	2021	2020	2019	2018	2017				
Rentals/Donation Events												
Salinas Rodeo Overflow Parking/Camping	1	1	1	0	0	1	1	1	50 - 80	24 hrs	0	0
Sheriffs Dept /Agencies	1	2	3	0	1	4	10	5	30 - 100	12 to 5	0	2
4-H	12	11	12	0	0	3	12	12	30 - 50	5 to 9	0	0
Family Parties	3	2	4	0	0	4	8	6	100 -150	12 to 8	1 to 3	0
Equestrians Arena Events	43	43	46	0	0	30	58	52	100 -200	4 to 9	0	6
Baby shower/Birthday/Reuions	8	5	3	0	0	4	6	4	50 - 200	12 to 7	1 to 4	10
Fundraiser	4	2	2	0	0	3	2	1	100 - 2,000	11 to 8	2 to20	10
Celebration of Life	6	8	4	1	0	6	2	5	80 - 250	10 to 6	0	10
Retirement Parties	2	1	1	0	0	1	3	2	80 - 200	1 to 5	0	10
Quinceanera	4	3	3	0	0	3	2	2	150 - 300	2 to 9	4 to 6	20
Weddings	5	6	4	1	0	6	4	2	100 - 200	2 to 9	2 to 4	25
Company Parties	4	4	2	0	0	8	8	8	400 - 2,000	11 to 5	0	30
Concerts/Dance	6	4	5	1	0	6	8	6	1200-2500	12 to 7	18 to 25	20

No event issues

Applified Noise time changed 7:00 am to 9:00 pm

Posse Events

Trash/Other Services	52	52	52	52	52	52	52	52				
Posse Stall Traffic	365	365	365	365	365	365	365	365				
Meetings	23	23	23	2	0	23	23	23	16 to 30	6 to 9	0	
Dances	2	2	2	0	0	2	2	2	100 to 250	2 to 9	0	
Car Show	1	1	1	0	0	1	1	1	80 to 150	10 to 4	0	
Jr Rodeo	1	1	1	0	0	1	1	1	100 to 250	7 to 8	0	
Big Hat BBQ	1	1	1	0	0	1	1	1	400 to 600	5 to 10	0	



Attachment 3. Monterey County Sheriff's Posse Grounds – Vehicle Miles Traveled and Local
Transportation Analysis

Memorandum

To: Carl Pacheco
Monterey County Sheriff's Posse Inc.

From: Frederik Venter, P.E.
Chris Gregerson, P.E., T.E., PTOE, PTP
Brandon Kenery, EIT

Re: *Monterey County Sheriff's Posse Grounds –Vehicle Miles Traveled and Local Transportation Analysis*
Monterey County, California

Date: May 7, 2024

In accordance with our Scope of Services, we have prepared this memorandum to document the findings of the local transportation analysis (LTA) and vehicle miles traveled (VMT) study completed to address the amendment to an existing use permit at the Monterey County Sheriff's Posse Grounds to allow concerts and large gatherings up to five times per year in excess of the current maximum attendance ("Project" or "Proposed Project") in Monterey County, California. Our proposed scope of services specifically addresses the following:

- Review of the existing 1983 conditional use permit
- Review of 2024 event calendar for the Project
- Trip Generation, Distribution, and Assignment of Proposed Project
- Congestion and Safety evaluation
- Event Parking Management
- Event Traffic Management
- CEQA SB 743 VMT Analysis

Project Description

Kimley-Horn understands that the project applicant is being required by Monterey County to process an amendment to an existing use permit to allow concerts and large gatherings in excess of the current maximum attendance of permitted uses on the Monterey County Sheriff's Posse Grounds. This amendment processing requires an LTA and VMT study be completed to determine the impact of the amendment to the existing use permit on the surrounding roadway network. Specifically, this study looks at the difference in VMT and traffic operations between a weekend concert event of 500 attendees (existing conditions, currently permitted) and a weekend concert event of 2,500 attendees (Proposed Project) occurring up to 5 times per year. The project location and study area are shown in **Exhibit 1**.

The Sheriff's Posse grounds host a variety of events throughout the year including events such as Weddings, Baby Showers, Celebration of Life's, Fundraisers, County Parties and Meetings, Sheriff's Mounted Unit Training, Sheriff's Narcotic Classes, Salinas Police Department K-9 Unit Training, Gymkhana, Quinceanera's, Ameca Concerts, Annual Posse Big Hat BBQ, Annual Posse Car Show, Annual Jr Rodeo, Picnics, Team Building events and more. The Project site plan is shown in **Exhibit 2**.

Existing Conditions

Based on the information provided by the Sheriff's Posse an understanding of existing permitted conditions and existing (2024) operations was analyzed.



Existing 1983 Conditional Use Permit

The most recent land use permit, *Coast Counties Mini-Bike Club (PC-4727)*, was issued as a conditional use permit to allow for min-bike racing activities in addition to the already existing uses on site. Based on the existing uses description of this permit, Kimley-Horn has defined the existing permitted uses as described below. A copy of the original use permit is provided in **Attachment A**.

Structures/Land (1983):

- Sheriff's Posse Grounds
- Clubhouse
- Parking
- Caretakers Quarters
- Stables
- Arena
- Grandstand
- Restrooms

Past and Present Uses (1983):

- Rodeo's
- BBQs
- Roping Events
- Motorcycle Racing
- Bicycle Racing
- Horse-Play-days

The permit discusses parking and attendance in specific reference to the mini-bike racing activities which are the subject of the conditional use permit application. Of this, the application states that the property has 100± uncovered parking spaces for spectators and another 90 uncovered parking spaces for Pit Parking. In addition, the application mentions bleachers seating up to 150 people and attendance ranging from 100 to 150 people.

We propose that permitted attendance and parking under the original permit cover any Posse and Rental events that can be accommodated by a 190-stall parking supply, consistent with supply described in the permit and summarized above. Parking of up to 190 vehicles would accommodate attendance ranging from 380 to 570 people based on an average vehicle occupancy of 2-3 persons per vehicle. Therefore, attendance at any Posse, or rental events in excess of approximately 500 people would begin to exceed permitted use depending on vehicle occupancy, assuming a maximum parking supply of 190 stalls.

2024 Sheriff Posse Events

To help characterize land use and traffic for the project, the activities anticipated to be hosted by the project in 2024 were analyzed. The number and type of events anticipated in 2024 at the project site are summarized in **Table 1**.

The events hosted by the project fall under two categories: rental events where the use of the project facilities is rented out for use by third parties and Sheriff's Posse events which are hosted and coordinated by Monterey Sheriff's Posse directly. It is understood that some of the rental events anticipated by the project in 2024 may exceed limits of permitted use established in the original conditional use permit. The project is proposing to continue to host events similar to those that anticipated in 2024 and is seeking a new conditional use permit that allows for a maximum attendance of up to 2,500 people.

Table 1 – Summary of Anticipated 2024 Sheriff's Posse Events

2024 Event Description	Frequency (events per year)	Number of guests per event	Typical Day of Week	Event Hours	Event Crew	Before/After
Rental Events						
Salinas Rodeo Over-flow Camping	1	50 - 80	Weekend	24 hrs	4	--
Sherriff's Dept./ Agencies	1	30 - 100	Weekday	12 - 5	2	11-12 / 5-6
4-H	12	30 - 50	Weekday	5 - 9	--	--
Family Parties	3	100 - 150	Weekday	12 - 8	1 - 3	9-12 / 8-9
Equestrian Arena Events	43	100 - 200	Weekend	4 - 9	6	12-5
Baby Showers/ Birthdays/Reunions	8	50 - 200	Weekend	12 - 7	11 - 14	12-2 / 8-9
Fund Raisers	4	100 - 2,000	Weekend	11 - 8	12 - 30	7-9 / 5-7
Celebration Of Life	6	80 - 250	Weekday	10 - 6	10	8-10 / 6-7
Retirement Parties	2	80 - 200	Weekday	1 - 5	10	12-1 / 6-7
Quinceanera	4	150 - 300	Weekend	2 - 9	24 - 26	7-2 / 10-12
Weddings	5	100 - 200	Weekend	2 - 9	27 - 29	7-2 / 10-12
Company Picnic's	4	400 - 2,000	Weekend	11 - 5	30	8-12 / 5-7
Concerts	6	1,200 - 2,500	Weekend	12 - 7	38 - 45	6-12 / 6-9
Sheriff's Posse Events						
Trash/Other services	52	--	Weekday	10 AM	--	--
Posse stall traffic	365	--	Weekly	24 hrs	--	--
Meetings	23	16 - 30	Weekdays	6 - 9	2	3-5
Dances	2	100 - 250	Weekend	2 - 9	4	12-4
Car Show	1	80 - 150	Weekend	10 - 4	6	Day before 8hrs
Jr Rodeo	1	100 - 250	Weekend	7A - 8P	8	Day before 8hrs
Big Hat	1	400 - 600	Weekend	5 - 10	30	8-5/10-12

Trip Generation, Distribution, and Assignment

Trip Generation

The approximate number of Project trips caused by an increase to 2,000 attendees during a weekend concert were estimated. The increase is based on vehicle occupancy and drop-off rates observed at an event counted on Sunday April 16, 2023. Count summaries are provided in **Attachment B**. Vehicle occupancy at the event was observed as an average of 4 persons per vehicle with a drop-off vs parking rate of 5%. Because the event venue is outside of town carpooling is preferential to drop-offs, and parking is paid per vehicle thus carpooling is common and vehicle occupancy is high for attendees of events at the Sheriff’s Posse. **Table 2** shows the proposed Project trip generation. The Project is anticipated to add 1,000 net new daily trips in the study area on the day of a maximum attendance concert with 300 net new trips arriving within an hour of concert start, and 475 net new trips departing within an hour of concert ending. Project approval would result in a total of 1,250 daily trips in the study area on the day of a maximum attendance concert with 375 arriving trips within an hour of concert start, and 594 departing trips within an hour of concert ending.

Table 2 – Proposed Project Trip Generation

Event Type	Annual Frequency	Max Attendance	Average Vehicle Occupancy ¹	Total Annual Trips ²	Day of Event Trips ³	Peak Hour Trips	
						Arrival (IN) ⁴	Departure (Out) ⁵
New Proposed Concert (max occupancy)	5	2,500	4.0	6,250	1,250	375	594
Existing Permitted Concert	5	500	4.0	1,250	250	75	119
Net New Trips				5,000	1,000	300	475

1. Based on vehicle occupancy observed at event on Sunday April 16, 2023.
2. Calculated as Annual Frequency*Day of Event Trips
3. Calculated as 2*Max Attendance/Average Vehicle Occupancy
4. Based on counts from an event on Sunday April 16, 2023; 60% of attendees arrive within an hour of event start.
5. Assumed 95% of attendees would leave within an hour of event ending.

Trip Distribution

Access to the Project site is provided via Old Natividad Road with separate driveways for attendees, event staff, and emergency vehicles. Trip distribution and assignment as shown in **Exhibit 3**, was developed based on knowledge of the study area existing traffic patterns:

- 5% North via Natividad Road
- 5% East via Old Natividad Road
- 90% South via Natividad Road

Trip Assignment

Project generated traffic was assigned to the local roadway network based on the trip generation and distribution percentages described above. Arriving Peak Hour trips represent the hour leading up to event start with the highest percentage of total event traffic arriving at the Project. Departing peak hour trips represent the hour following the event with the highest percentage of total traffic departing the Project. As shown in **Exhibit 3** there are up to 428 westbound left trips anticipated leaving the Project during the departing peak hour. Existing ADT counts collected on Natividad Road and Old Natividad Road Sunday April 16, 2023, indicate that cross traffic on Natividad Road during the departing peak hour will provide adequate gaps for multiple westbound left turning vehicles to turn onto Natividad Road at one time. While minor congestion and queueing may occur on Old Natividad Road during the departing peak

hour, these queues are anticipated to dissipate within 20-30 minutes following a maximum occupancy event.

Qualitative Level of Service Assessment

Intersection #1 Crazy Horse Canyon Road @ San Juan Grade Road – This intersection is all way stop controlled in a rural area of the County. Field observations indicate that it operates at a Level of Service (LOS) D or better during peak periods. On weekends when events would occur at the project site the LOS would be improved over the weekday peak period. Approximately 5 percent of event traffic is distributed to and from the north through this intersection. During arrival and departure of a special event the LOS may deteriorate to slight congestion for maximum occupancy. However, the queues would dissipate within 20-30 minutes and traffic conditions would return to normal. This congestion may occur under the proposed project up to 5 times per year. No improvements are warranted or recommended at this intersection due to the low frequency of the traffic events.

Intersection #2 Old Natividad Road @ Natividad Road – all project traffic will utilize this intersection to gain access during an event. This intersection is most likely to experience increased adverse LOS/congestion. Event staff on-site actively monitors congestion at this intersection during events and if queues form on any of the approaches, experienced staff would manage the traffic flow that would allow vehicles to make turns similar to signal operations. Queues would dissipate within 20-30 minutes and operations would return to normal. No improvements are warranted or recommended at this intersection due to the low frequency of the traffic events.

Intersection #3 Rogge Road @ Natividad Road – this intersection is side street stop controlled on Rogge Road. If vehicle flows on Natividad increase due to a special event, access from Rogge Road would be constrained and vehicles would have to wait for gaps in the traffic stream on Natividad Road. These gaps would be created by the signal at Boronda Road or by the manual control at Old Natividad Road. Queues would dissipate within 20-30 minutes and operations would return to normal. No improvements are warranted or recommended at this intersection due to the low frequency of the traffic events.

Beyond these intersections, event traffic starts to dissipate on the area road network to negligible levels.

Congestion and Safety Evaluation

Kimley-Horn understands that there are no existing issues with sight distance and congestion on Natividad Road during past Sheriff's Posse events. In addition, the project does not propose any physical changes to the project site resulting in decreased site distance or adjust lane geometries. Therefore, no sight distance issues are identified as a part of the proposed Project.

Kimley-Horn analyzed 3 years of historical collision data (2017-2019) at the intersection of Natividad and Old Natividad Road. **Table 3** shows a list of east crash location, type, severity, and the primary collision factor contributing to the crash as listed on the crash report. **Table 4** shows crash summary totals for the intersection of Natividad Road with Old Natividad Road by year, severity, and type. There were no fatal crashes within the three years reviewed at the intersection adjacent to the Proposed Project. Of the total 11 crashes between 2017 and 2019 there were 7 property damage only crashes and 4 crashes resulting in injury. The most common crash type is rear-end collisions (5) and broadsides (3) with sideswipes, hit objects, and pedestrian/auto collisions each occurring once over the three-year period.

The proposed Project would alter operations at the intersection of Natividad Road with Old Natividad Road as needed when queues attempting to enter the Project site spill back from the Project driveway

onto Natividad Road (via Old Natividad Road). Experience has shown that this extreme queueing scenario does not occur for events with attendance up to 500 people. Therefore, queue spillback is anticipated to only occur on Natividad Road up to 5 times a year during high attendance concert events. In this scenario, trained Project staff would direct the flow of traffic at the intersection of Natividad Road with Old Natividad Road to help disperse queues and prevent rear-end collisions from stopped queued vehicles on Natividad Road. As shown in **Table 3** assignment of vehicle right-of-way and unsafe speeding combine to account for 73 percent of all crashes at the intersection. The presence of project staff directing traffic and assigning right-of-way to dissipate queues would help to curb speeding and avoid right-of-way confusion during peak congested periods.

Table 3 – Crash History at the Intersection of Natividad Road with Old Natividad Road

Year	Direction	Distance	Type	Severity	Primary Collision Factor
2017	S	50	Rear End	PDO	ROW Auto
2017	--	0	Broadside	PDO	ROW Auto
2018	W	800	Sideswipe	PDO	Improper Passing
2018	S	1109	Rear End	PDO	Unsafe Speed
2018	N	200	Broadside	PDO	ROW Auto
2018	--	0	Broadside	Injury	ROW Auto
2018	E	40	Rear End	PDO	Unsafe Speed
2019	--	0	Auto/Ped	Injury	--
2019	S	500	Rear End	Injury	Unsafe Speed
2019	N	1584	Hit Object	Injury	Not Driver
2019	N	30	Rear End	PDO	Unsafe Speed

Table 4 – Crash Summary and Totals by Year at the Intersection of Natividad Road with Old Natividad Road.

Year	Total Crashes	Severity			Type				
		PDO	Injury	Fatal	Rear End	Broad-side	Side-swipe	Hit Object	Ped-Auto
2017	2	2	0	0	1	1	0	0	0
2018	5	4	1	0	2	2	1	0	0
2019	4	1	3	0	2	0	0	1	1
Total	11	7	4	0	5	3	1	1	1

Event Parking Management

Assuming an event with 2,500 attendees and an average vehicle occupancy of 4.0, the event parking demand would increase from 125 (for up to 500 attendees) to 625 (for up to 2,500 attendees) and summarized in **Table 5**. Detailed Parking layouts are provided in **Attachment C. Exhibit 4** shows the parking management measures planned for the Project venue which include:

- 4 dirt parking lots striped with chalk for large events to maximize parking efficiency
- Entrance signs
- Separate staff and patron access driveways
- Caution tape and orange cones to prohibit parking on Old Natividad Road
- Parking Staff to assist vehicles in Project access and parking
- Emergency vehicle access (EVA)
- Drop-off/Pickup zone along project frontage
- Reversible driveways in Parking Lot 1 to assist ingress/egress

Table 5 – Event Day Peak Parking Demand

Event Type	Annual Frequency	Max Attendance	Average Vehicle Occupancy ¹	Event Parking Demand ²	Parking Lot 1 Supply ³	Parking Surplus ⁴
New Proposed Concert (max occupancy)	5	2,500	4.0	625	1,152	527
Existing Permitted Concert	5	500	4.0	125	1,152	1,027

1. Based on vehicle occupancy observed at event on Sunday April 16, 2023.
2. Calculated as Max Attendance/Average Vehicle Occupancy
3. Based on site layout provided by Monterey Sheriff’s Posse. Three additional parking lots with an added 1,900 stalls available as needed.
4. Calculated as Parking Lot 1 Supply - Event Parking Demand

Event Traffic Management

Event traffic management is depicted in the photos in this section. The project proposes many active traffic management interventions to help minimize congestion during large events hosted by the site including the following:

- As vehicles arrive, they are immediately directed onto site property in Parking Lot 1 without gate check or stopping on Old Natividad Road whenever possible to help minimize queues on public roads.
- Project Staff are equipped with orange flags to direct traffic efficiently within the parking lot and eventually direct each vehicle to the next available parking stall.
- If queues form on Old Natividad Road, project staff will direct queued vehicles to move out of line and park in Parking Lot 2 helping to efficiently move vehicles out of the public roadway.
- If these efforts are still not enough to contain event queues to the Project site property, an addition trained staff member will provide traffic control at the intersection of Natividad Road and Old Natividad Road to prevent queues from building up on this roadway. The controller will allow gaps in the traffic stream to enable vehicles to turn onto Old Natividad Road.
- Vehicles dropping off or picking up are directed to project frontage adjacent the venue green. This provides shortest distance access for pedestrians to walk into the venue.



Vehicles are directed by flaggers as they enter the property and directed to a parking aisle



Multiple vehicles can be assisted at once, minimizing backups or queues on Old Natividad Road.



After being directed to a parking aisle, additional parking staff are positioned near the next available stall to direct vehicle to efficiently park and unload.



Gated entry with Entrance sign posted for approaching vehicles.



Traffic cones with caution tape prevent parking on Old Natividad Road. A-frame and other signs indicate traffic flow directions and location of parking.



Pedestrian Drop-Off location just outside of Parking Lot 1 on Old Natividad Road.

CEQA SB 743 Vehicle Miles Traveled Assessment

Kimley horn has identified the project as an event facility. A wedding venue, winter sports venue, boat rental facility, or concert venue may all be considered event facilities as their main hours of operation are dependent on the time of events or holidays and typically do not fall during the conventional weekday commute traffic peaks.

To qualify for screening under VMT, an event facility must fall below the annualized VMT of the small project screening criteria by producing fewer than 110 daily trips on average of the course of the year. The Proposed Project focuses only on the uses or events that will exceed currently permitted uses with attendance up to 500 people. The only events the project proposes that will exceed this are concerts held 5 times a year with attendance up to 2,500 people (or 2,000 people more than what is currently permitted). **Table 6** shows that in the case of the project, the annualized average daily trip increase attributed to the project is 13.7 trips per day. As the annualized average daily trip increase attributed to the project of 13.7 is below the 110 daily trip threshold for screening criteria of small projects, the Project screens-out from quantitative VMT analysis with the presumption of a less than significant impact on VMT.

Table 6 – Proposed Project Annualized VMT Screening

Trip Generation Metrics	Quantity
Proposed Project Net New Daily Trip Generation (day of event)	1,000
Proposed permitted events per year	5
Total Proposed Project Net New Annual Trip Generation	5,000
Days in a Year	365
Proposed Project Annualized Daily Trips	13.7
Daily Trips Small Project Screening Criteria Threshold	110
Does the Proposed Project Screen-Out under Small Project Criteria?	Yes

Findings

- Existing Project operations are permitted for events up to 500 attendees. The Project proposes expanding maximum permitted attendance up to 2,500 people for concert events up to 5 times per year.
- The Project is anticipated to add 1,000 net new daily trips in the study area on the day of a maximum attendance concert with 300 net new trips arriving within an hour of concert start, and 475 net new trips departing within an hour of concert ending.
- Cross traffic on Natividad Road during the departing peak hour will provide adequate gaps for multiple westbound left turning vehicles to turn onto Natividad Road at one time. While minor congestion and queueing may occur on Old Natividad Road during the departing peak hour, these queues are anticipated to dissipate within 20-30 minutes following a maximum occupancy event.
- There is adequate sight distance for project generated traffic to ingress and egress the project site. Crash history near the project site shows rear-end collisions and speeding account for 75% of collisions between 2017 and 2019. The proposed Project is not anticipated to create any new safety concerns due to project traffic.
- The proposed Project event parking management plan provides adequate parking supply and management to accommodate parking on site, with measures in place to prohibit parking on public roads.

- The proposed Project event traffic management plan is adequate to manage queues and prevent unsafe queuing at project driveways or adjacent County intersections.
- The proposed project screens out from quantitative VMT analysis on the basis on being an event facility with the annualized equivalent of less than the small project screening threshold of 110 daily trips.

Exhibits:

Exhibit 1 – Project Location and Study Area

Exhibit 2 – Project Site Plan

Exhibit 3 – Project Trip Distribution and Assignment

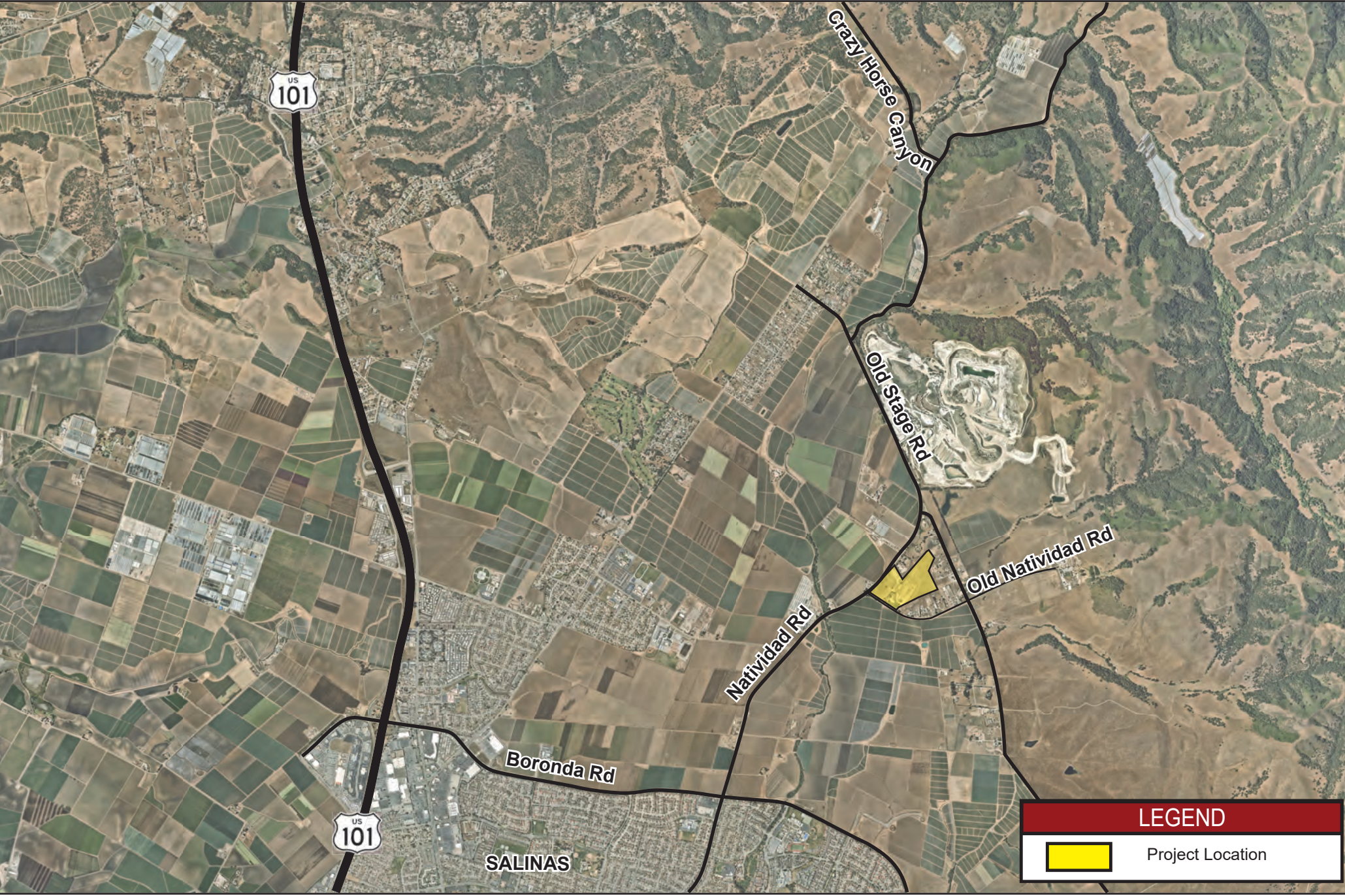
Exhibit 4 – Project Parking Management

Attachments:

Attachment A – Original 1983 Conditional Use Permit

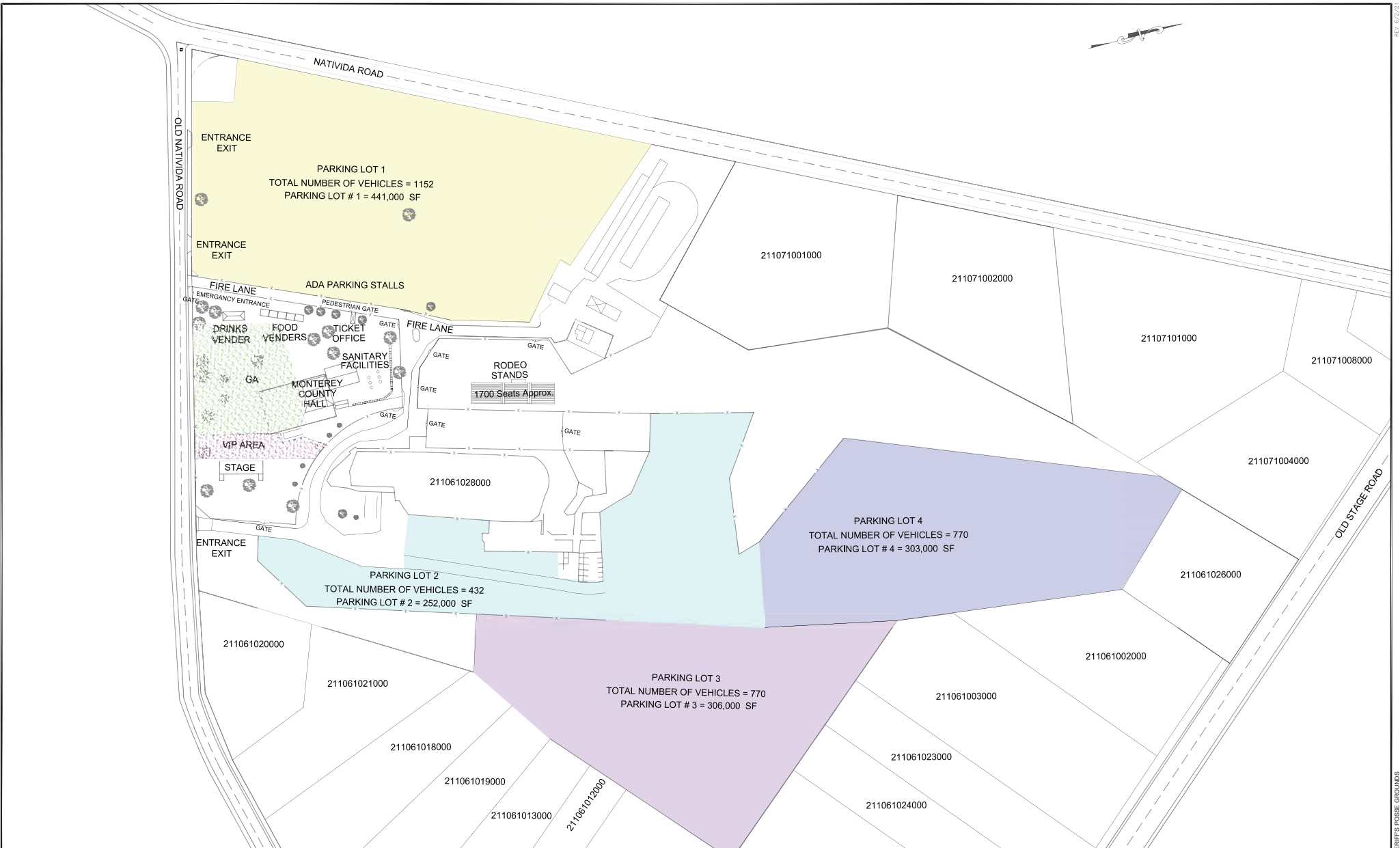
Attachment B – Vehicle Occupancy Survey and Roadway ADT Counts

Attachment C – Detailed On-Site Parking Layout



Monterey County, Monterey Sheriff's Posse Grounds - Vehicle Miles Traveled and Local Transportation Analysis
Exhibit C

REV: 07/21



EMPRESAS AMECA

NO.	DATE	REVISION

DESIGNED BY:
E. RIZO
DRAWN BY:
E. RIZO
CHECKED BY:
E. RIZO
CAD DWG NAME:
306

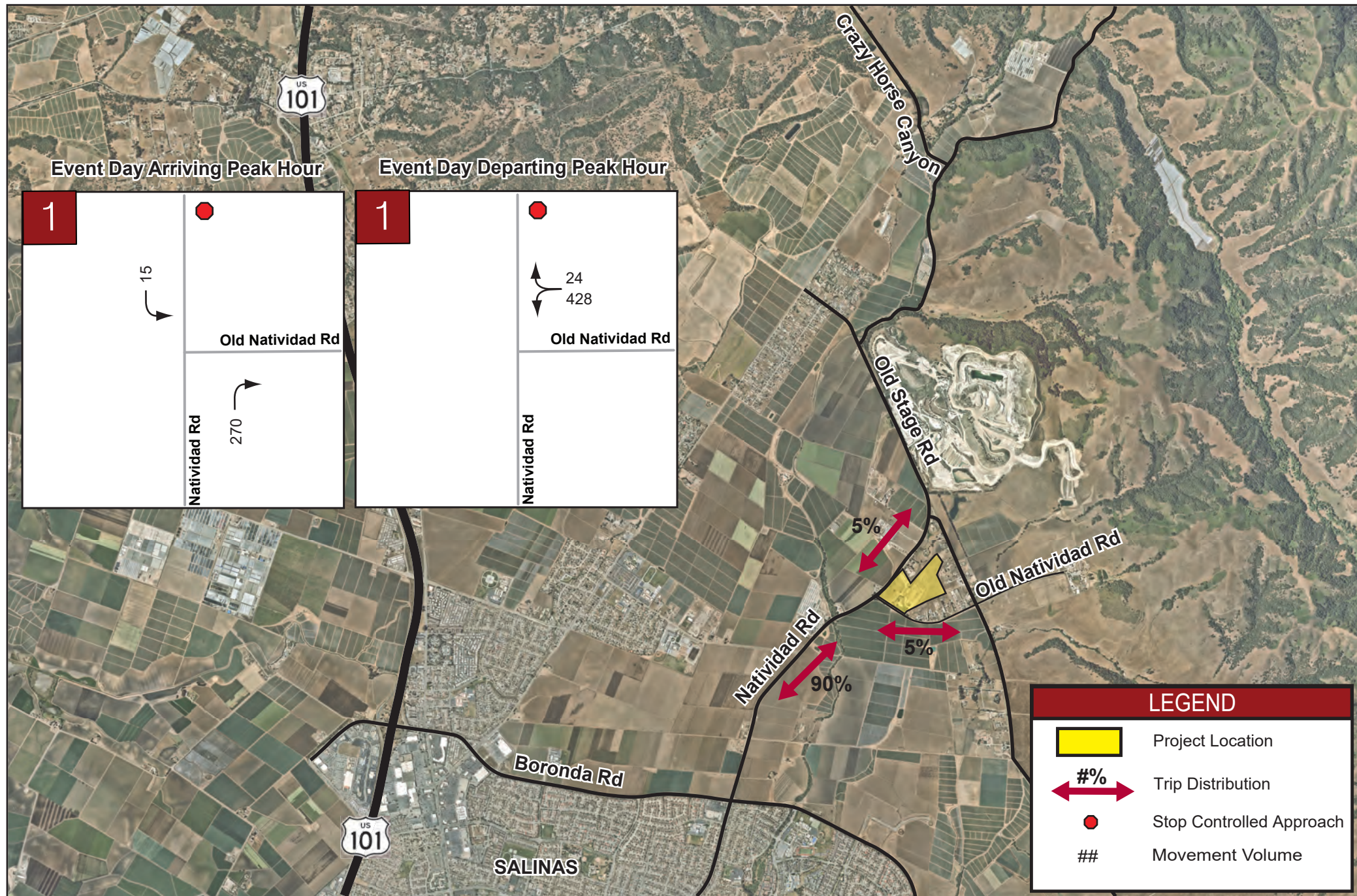
**MONTEREY COUNTY SHERIFF'S POSSE
GROUNDS**

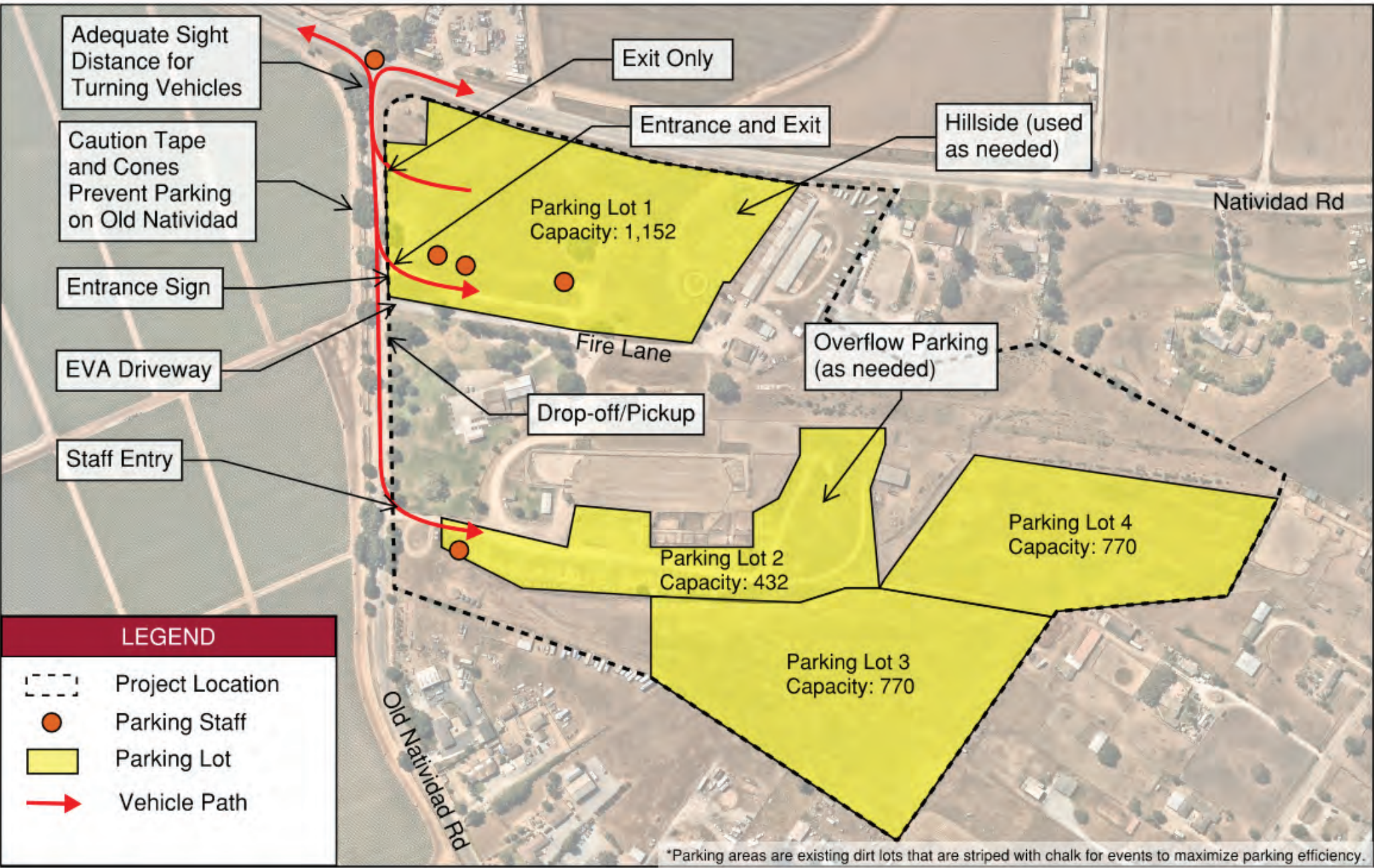
SITE LAYOUT PLANS

SCALE: AS NOTED
DATE: OCTOBER 15, 2021
SHEET:
SHEET 1
SHEET 1 OF 2

FULL SCALE PLOT SIZE: 22" X 34"

MONTEREY COUNTY SHERIFF'S POSSE GROUNDS





Attachment A

Original 1983 Conditional Use Permit

Exhibit C

Agenda # 2

PC-4727

ENVIRONMENTAL RECOMMENDATION AND INITIAL STUDY

MEETING: PLANNING COMMISSION OF MAR. 16, 1983

PROJECT: COAST COUNTIES MINI-BIKE CLUB FILE NO. PC-4727

APPLICATION TYPE: USE PERMIT

LOCATION: NATIVIDAD AREA, SHERIFF'S POSSE GROUNDS

PRESENT: 47.391 ACRES, SHERIFF'S POSSE GROUNDS, EXISTING CLIPHOUSE, PARKING AREAS, CARETAKERS' QUARTERS, STABLES, ARENA, GRANDSTAND, RESTROOMS;

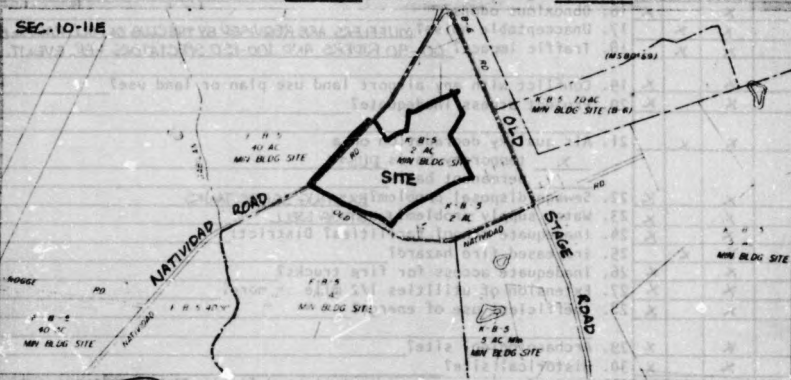
PROPOSED: ALLOW MINI-BIKE RACING EVENTS. THE COAST COUNTIES MINI-BIKE CLUB PROPOSES 6 EVENTS FOR 1983.

PLAN: MONTEREY COUNTY GENERAL PLAN

PLAN DESIGNATION: PUBLIC - QUASI-PUBLIC

PROJECT CONSISTENCY STATUS: X CONSISTENT INCONSISTENT

SEC. 10-11E



THE STAFF PLANNING COMMISSION OTHER MAKES

THE FOLLOWING ENVIRONMENTAL RECOMMENDATION: FROM AN INITIAL STUDY (SEE REVERSE)

IT HAS BEEN DETERMINED THAT THIS PROJECT MAY, WILL NOT HAVE A SIGNIFICANT IMPACT(S) UPON THE ENVIRONMENT AND IT IS RECOMMENDED THAT A

X NEGATIVE DECLARATION, OR OK. Staff
NEGATIVE DECLARATION WITH MITIGATION MEASURES (attached),

OR

ENVIRONMENTAL IMPACT REPORT (EIR), BE PREPARED.

PREPARER CATNY STEW TITLE PLANNER II DATE MAR 4, 1983

IF YOU HAVE ANY QUESTIONS ABOUT THE MEANING OF THIS INFORMATION PLEASE CONTACT THE ENVIRONMENTAL SECTION OF THE COUNTY PLANNING DEPARTMENT PRIOR TO THE MEETING DATE AT THE TOP OF THIS PAGE BY CALLING 422-9018.

TO: FILE PG 4727

Exhibit C

DATE: MAR. 8, 1983

FROM: ENVIRONMENTAL SECTION

AREAS NEEDING CONDITIONS FOR COAST COUNTIES MINI-BIKE CLUB

BASED UPON INITIAL STUDY/EIR.

ENVIRONMENTAL DETERMINATION: NEG. DEC.

DATE OF INITIAL STUDY: MAR. 4, 1983

DATE OF DETERMINATION: MAR. 16, 1983

CERTIFICATION DATE, IF EIR: —

PROJECT HEARING DATE: _____

AREAS OF CONCERN:

1. WATER TRACK BEFORE AND AFTER EVENTS TO MINIMIZE DUST.
2. EVENTS SHOULD BE LIMITED TO THE HOURS OF 10 AM TO 5 PM.
3. THERE SHOULD BE A LIMITED NUMBER OF EVENTS ALLOWED PER YEAR.
4. ALL MOTORCYCLES MUST BE MUFFLED SO AS NOT TO EXCEED THE COUNTY NOISE ORDINANCE.

ADDITIONAL SHEETS TO FOLLOW, IF NECESSARY.

SHEET 1 OF 1

Exhibit C

MONTEREY COUNTY PLANNING DEPARTMENT

APPLICATION FOR:
 USE PERMIT, VARIANCE, SPECIAL PERMIT, ZONING PERMIT, REZONING, "SC" PERMIT

p.m. of lot 11 & Map of Retained

1. Applicant's Name: Coast Counties Mini-Bike Club (Barry C. Ballow)
 Address: 313 MEDBURY AVE City: SALINAS
 Telephone: 499-1966 ZIP: 93906
2. Applicant's interest in property (Owner, Buyer, etc.): C.C.M.B.C.
Rents Property for Motorcycle Events
3. Person(s) to be notified of hearings:
 Name: MIKE DEQUAISE
 Address: 5 LAQUITA RD City: SALINAS
 Telephone: 499-5059 ZIP: 93906
4. Property Owner's Name: MONTEREY COUNTY SHERIFFS POSSE
 Address: P.O. Box 1547 City: SALINAS
 Telephone: _____ ZIP: 93902
5. Property address and general location: _____
6. Assessor's Parcel Number: 211-061-25 27 and 28
7. Zoning: 4-J
3. Property area (acres or square feet): 47.391 ACRES
3. Present and past use of project site and adjoining properties: RODEO'S,
A.B.'S, ROPING EVENTS, MOTORCYCLE RACING, BICYCLE RACING,
HORSE-PLAY-DAYS, ADJOINING PROPERTY IS RESIDENTIAL.
10. What is this request for (the use, etc.): COUNTY USE PERMIT TO HOLD
FURTHER RACING ACTIVITIES AND MINI-BIKE PLAY DAYS.
11. a) Variance requested: _____
 b) Why is the Variance necessary, explain hardship (use extra paper, if needed): _____
12. REZONING OR AMENDMENT ONLY: The applicant wishes to amend Section _____
 Title 20 (Zoning), Section 20.06070 (Sectional District Maps) of the Monterey
 County Code, from a _____ Zoning District to a _____
 _____ Zoning District to allow _____
13. If new construction is proposed:
 a) Residential: Type and total number of units (one-story single family,
 six two-story duplexes, etc.): _____
 b) Commercial or Industrial (Retail, Office, Warehouse, etc.), square footage,
 number of employees: _____
 c) Height of structure(s): _____
14. Parking: Number of covered spaces: _____
 Number of uncovered spaces: 100±
 Number of loading spaces: _____
15. Will grading or filling be required: Yes No _____ Cubic yards GRADING OF TRACK
SURFACE
16. Will trees be removed: Yes _____ No If yes, how many, how large, what
 type: _____
17. Will other vegetation be removed: Yes No _____ If yes, what type: SOME
GRASS OR OTHER VEGETATION MAY BE MOVED TO SMOOTH AREA.
18. Describe the property as viewed, including all natural and man-made features
 (use extra paper, if needed): GENERALLY FLAT AND LOW-LYING IN
A SMALL VALLEY. TRACK AREA IS WALLED ON SOUTH
SIDE BY A STEEP BLUFF APPROX 20' ± HIGH.

Exhibit C

- 19. How will water be supplied: Drinking and track water is supplied from existing well on the property.
- 20. How will sewage or other wastes be disposed: THE EXISTING PERMANENT TOILET FACILITIES HAVE THEIR OWN SEPTIC TANKS
- 21. Will the project require placement of structures, roads, cuts or fills on cross slopes of 30% or greater: Yes ___ No ✓
- 22. Will any persons be displaced as a result of this project: Yes ___ No ✓
If yes, how many: _____
- 23. Is this land being farmed: Yes ___ No ✓
- 24. Is this land used for grazing: Yes ✓ No ___ DURING 20% OF SEASON SOME STOCK IS ALLOWED TO GRAZE.
- 25. Discuss any mitigation measures that are proposed to reduce environmental impacts that might result from this project (use extra paper if needed): WE HAVE REDUCED MUFFLERS ON ALL RACING BIKES, AND THE TRACK IS WATERED TO REDUCE OR ELIMINATE DUST DURING RACING EVENTS.

Monterey County Sheriff's Posse
OWNER'S NAME (PLEASE PRINT)

Jerry A. Withering, President
OWNER'S SIGNATURE

I certify under penalty of perjury that I am authorized by the owner(s) of the described property to make this application:

Dated: _____ at _____, California.

AGENT'S NAME (PLEASE PRINT)

AGENT'S SIGNATURE

FOR DEPARTMENT USE ONLY

DATE RECEIVED: 1/7/83 RECEIPT NO. 28783
 FILING FEE: \$125.- ENVIRONMENTAL FEE: \$125.-
 JAN 7 1983

- HEALTH DEPARTMENT SEWAGE LETTER
- ADEQUACY OF ACCESS REPORT
- ADVISORY COMMITTEE
- WELL LOG

County Planning Dept.	
Initial	Date
Member	
Return	

MONTEREY COUNTY PLANNING DEPARTMENT
 P. O. BOX 1208
 SAN JUAN, CA 93902
 (408) 422-9018

Exhibit C

FILE NO. PC-4727 TYPE OF APPLICATION Use Permit DATE 1-12-83
 APPLICANT: Cost County Munic. Dist. Ct.
 NAME Mike De Quaise
 ADDRESS 5 Laguna Rd CITY Selma
 TELEPHONE 449-5054 ZIP 95906

RECEIVED 1-2-83 FEE \$ 125.00 RECEIPT # 28783
125.00 use
125.00 fee

ZONING REVIEW FOR COMPLETENESS FEB 23 1983

TO ENVIRONMENTAL STAFF 1/18/83

"88A" NOTICE TO APPLICANT 1/28/83 (NC) FEB 23 1983 (C)

APPLICATION DETERMINED COMPLETE AND PLACED ON AGENDA FEB 23 1983

REFERRALS SENT _____

ENVIRONMENTAL DETERMINATION AND DATE

Categorical Exemption: Section _____ Class _____ Item _____

Exempt Status _____

Determination by Z.A. _____ Date _____

Determination by P.C. _____ Date _____

Determination by B. of S. _____ Date _____

NOTICES TO ADJOINING PROPERTY OWNERS _____

NOTICES TO NEWSPAPER 3-18-83 NEWSPAPER BCalif

POSTING SENT 3-16-83 AFFIDAVIT RETURNED 3-18-83

FINAL ACTION

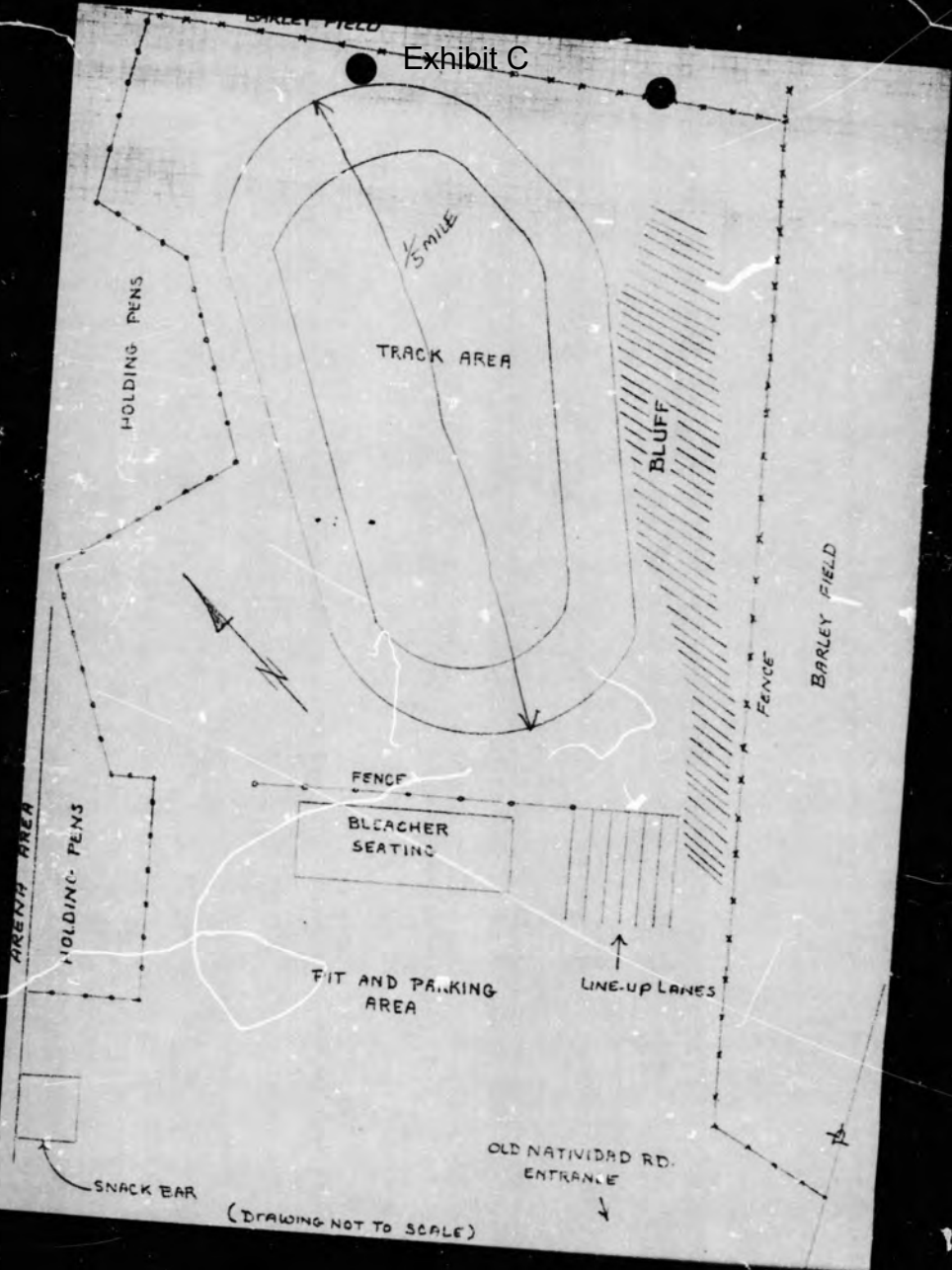
Z.A. Approved Denied Date _____ Appealed _____

P.C. Approved Denied Date 5/5/83 Res. No. 83-121 Appealed _____

B. of S. Approved Denied Date _____

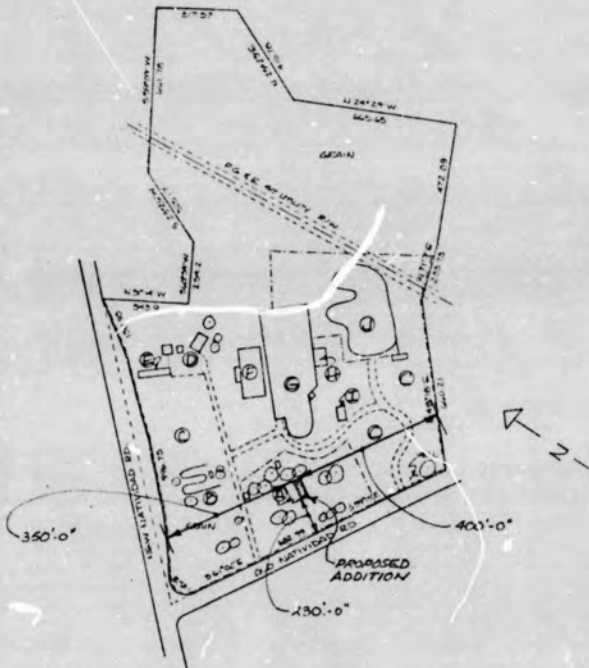
Public/Quasi-Public

Exhibit C



(DRAWING NOT TO SCALE)

Exhibit C

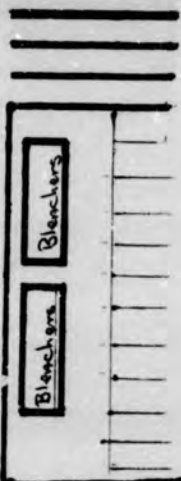


Z FENCE ———
 LOT#6 - I DRIVEWAY ACCESS

J	PROPOSED HAZARDOUS WASTE TRACK
I	PARKWAYS
H	CONCRETE PAVEMENT DRIVE
G	CONCRETE PAVEMENT DRIVE
F	GRASS STANDBY & BLENDED WITH FERTILIZER
E	STAPLES
D	CADYAKERS QUARTERS
C	PARKING AREA
B	PROPOSED B.C.N. TRAIL
A	EXISTING DRIVE
MONTESKEY COUNTY	
SHERIFFS OFFICE GROUNDS	
DATE	SCALE
DRAWN BY	CHECKED BY
APPROVED BY	DATE

201

COAST COUNTIES MINI BIKE CLUB
PARKING LAYOUT
MONTEREY CO. SHERIFFS POSSE GROUNDS



Line up
area

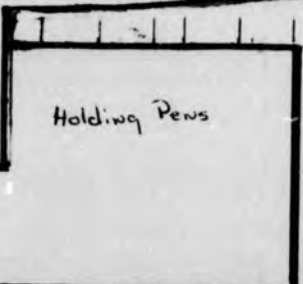
Exhibit C

6383
Parking Layout
Date

NOT TO SCALE

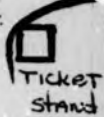
PARKING SHALL NOT BE ALLOWED
WITHIN 50' OF SOUTH PROPERTY LINE.

← TO TRACK



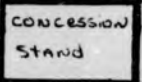
ACCESS ROAD

Pedestrian
type



(A)

(B)



ARENA FENCE



(A) P+ Parking Approx 33,120sqft 90 cars (B) Spectator Parking 57,600sqft 100 cars

**PROOF OF
PUBLICATION**

(2015.5 C.C.P.)

Exhibit C This space is for the County Clerk's Filing Stamp

431-60

STATE OF CALIFORNIA

County of Monterey

I am a citizen of the United States and a resident of the County aforesaid; I am over the age of eighteen years, and not a party to or interested in the above-entitled matter. I am the principal clerk of the printer of the *Salinas Californian*, a newspaper of general circulation, printed and published daily except Sunday in the City of Salinas, County of Monterey, and this newspaper has been adjudged a newspaper of general circulation by the Superior Court of the County of Monterey, State of California; that the notice, of which the annexed is a printed copy (set in type not smaller than nonpareil), has been published in each regular and entire issue of said newspaper and not in any supplement thereof on the following dates, to-wit:

March 19, 1983

I certify (or declare) under penalty of perjury that the foregoing is true and correct.

Executed on March 19, 1983

at Salinas, California.

Jule A. Johnson
Signature

No. _____
Coast Counties Mini-Bike Club
Natividad Area
Use Permit

NOTICE OF PUBLIC HEARING
CONCERNING THE
NATIVIDAD AREA
NOTICE IS HEREBY GIVEN
that the Planning Commission
of the County of Monterey
will hold a public hearing on the application
of the COAST COUNTIES MINI-BIKE CLUB
for a use permit to operate with their
Mini-Bike Club on 2000 1/2 West
Natividad Avenue, Natividad Area,
County of Monterey, California.
The hearing will be held on
Monday, March 21, 1983, at 7:00 p.m.
in the Board Room, Monterey
County Administration Center,
1000 North Main Street, Monterey,
California. Any person desiring
to appear at the hearing should
contact the Planning Department,
Monterey County Administration
Center, 1000 North Main Street,
Monterey, California 93940, at
least 72 hours before the hearing.

Exhibit C

AFFIDAVIT

PC- 4727 (COAST. COUNTIES MINI-BIKE CLUB)

I hereby certify under penalty of perjury that the appropriate notices were posted by me on 3-16-83 at the locations described below:

- 1) CORNER OF Natividad Rd. & Old Natividad Rd
- 2) CORNER OF Old Natividad Rd & Old Stage Rd.
- 3) CORNER OF Natividad Rd & Old Stage Rd.

Signature: Michael DeQuasie

Executed at Natividad Area

Name: Michael J. DeQuasie

Date 3-16-83

Address: 5 Lagunita Rd

Telephone: 449-5054

Dear Sir:

This is to notify you that Coast Counties Mini-Bike Club has applied for a Use Permit Permit in accordance with Monterey County Code, Title 20 (Zoning Ordinance), which would allow recreational activities

on the following described property:

Home Tract of Mary Coy Ranch

portion of lot 90 Parcel "2"

This matter will be considered by the PLANNING COMMISSION at 11:30 AM on MAR 30 1983 in the Supervisors' Chambers, Courthouse, Salinas, California

MONTEREY COUNTY PLANNING DEPARTMENT
P. O. Box 1208 - Phone 422-9018
Courthouse, Salinas, California

23

21 0707

NOTICE OF PUBLIC HEARING

MONTEREY
COUNTY

PLANNING
DEPARTMENT

NOTICE OF PUBLIC HEARING

(NATIVIDAD AREA)

ZONING NOTICE

NOTICE IS HEREBY GIVEN that the Planning Commission of the County of Monterey, State of California, will hold a public hearing on the application of COAST COUNTIES MINI-BIKE CLUB (PC-4727) for a Use Permit in accordance with Title 20 (Zoning) Chapter 20.96 (Use Permits) of the Monterey County Code, which would allow racing activities, located on portion of Lot 11A Map of Natividad, Natividad area, fronting on Natividad Road and Old Natividad Road.

NOTICE IS HEREBY FURTHER GIVEN that said hearing will be held on the following date: March 30, 1983

at the hour of 11:30 a.m. in the Supervisors' Chambers, Court House, Salinas, California, at which time and place any and all interested persons may appear and be heard thereon.

MONTEREY COUNTY PLANNING COMMISSION

California
3/16/83
jr

E. W. DE MARS
Secretary

For Additional Information Contact:
Monterey County Planning Department
Court House, Salinas, Phone 422-9018

Exhibit C

MONTEREY COUNTY PLANNING DEPARTMENT RECOMMENDATION SHEET
P. O. BOX 1208 SALINAS, CA 93901

TO: Health Department
Division of Highways
Air Pollution Control Board

Department of Public Works
Water Quality Control Board

FROM: SHARON BENINI

DATE: FEBRUARY 28, 1983

We would appreciate your Department's recommendations on the following application prior to ENVIRONMENTAL 3/16/83 PUBLIC HEARING 4/13/83.

APPLICANT : COAST COUNTIES MINI BIKE PC-4727

TYPE : USE PERMIT

REQUEST : RACING ACTIVITIES

LOCATION : NATIVIDAD AREA

DEPARTMENT COMMENTS:

DEPARTMENT RECOMMENDATIONS:

1. Conform to the requirements of Monterey County Code, Title 10.6 (Noise Ordinance).
2. Obtain all necessary permits from the County Health Department.

SIGNATURE

Sharon Benini

DATE

3/29/83

PC 4727

Exhibit C

MONTEREY COUNTY PLANNING DEPARTMENT RECOMMENDATION SHEET
P. O. BOX 1208 SALINAS, CA 93901

TO: Health Department
Division of Highways
Air Pollution Control Board

Department of Public Works
Water Quality Control Board

Salinas Rural FPD

FROM: SHARON BENINI

DATE: FEBRUARY 28, 1983

We would appreciate your Department's recommendations on the following application prior to ENVIRONMENTAL 3/16/83 PUBLIC HEARING 4/13/83.

APPLICANT : COAST COUNTIES MINI BIKE PC-4727

TYPE : USE PERMIT

REQUEST : RACING ACTIVITIES

LOCATION : NATIVIDAD AREA

DEPARTMENT COMMENTS:

DEPARTMENT RECOMMENDATIONS:

1. Provide fire extinguishers at starting line, pit area and finish line during racing activities. Fire extinguishers should be 10BC type for flammable liquid type fires and electrical fires.
2. Fire department to be notified when any racing activities occur.

Walt Days *Walt Days*

SIGNATURE

March 10, 1983

DATE

Exhibit C

MONTEREY COUNTY PLANNING DEPARTMENT RECOMMENDATION SHEET
P. O. BOX 1208 SALINAS, CA 93901

TO: Health Department
Division of Highways
Air Pollution Control Board

Department of Public Works
Water Quality Control Board

Sheriff Dept

FROM: SHARON BENINI

DATE: FEBRUARY 28, 1983

We would appreciate your Department's recommendations on the following application prior to ENVIRONMENTAL 3/16/83 PUBLIC HEARING 4/13/83.

APPLICANT : COAST COUNTIES MINI BIKE PC-4727

TYPE : USE PERMIT

REQUEST : RACING ACTIVITIES

LOCATION : NATIVIDAD AREA

DEPARTMENT COMMENTS:

The department has no objection to granting of use permit.

DEPARTMENT RECOMMENDATIONS:

That special care be exercised with regard to noise levels that can affect relationship with neighboring residents.

Traffic flow and parking during racing events be carefully planned in an effort to create the least disturbance possible to area residents also.

SIGNATURE

D. B. Cook
D. B. Cook
Sheriff-Marshal-Coroner-Public Administrator

DATE March 8, 1983

MONTEREY COUNTY PLANNING DEPARTMENT RECOMMENDATION SHEET
 P. O. BOX 1206 SALINAS, CA 93901

TO: Health Department
 Division of Highways
 Air Pollution Control Board

Department of Public Works
 Water Quality Control Board

FROM: SHARON BENINI

DATE: FEBRUARY 28, 1983

We would appreciate your Department's recommendations on the following application prior to ENVIRONMENTAL 3/16/83 PUBLIC HEARING 4/13/83.

APPLICANT : COAST COUNTIES MINI BIKE PC-4727

TYPE : USE PERMIT

REQUEST : RACING ACTIVITIES

LOCATION : MATIVIDAD AREA

DEPARTMENT COMMENTS:

Consider time limit for review purposes.

DEPARTMENT RECOMMENDATIONS:

1. Provide off street parking. Layout to be approved by Director of Planning.

SIGNATURE



DATE

3-7-83

To Monterey County Planning Dept:

Re: Mini Bike Races in Posse
Grounds

I am a resident of 376 Natividad Road
adjacent to the posse grounds
and disapprove of a noisy activity
at the posse grounds because
we moved here originally because
it was quiet and wish to maintain
our domestic tranquility for
ourselves and our posterity.

John Sinclair

RECEIVED
3/30/82
RS

Exhibit C

January 7, 1983

Mr. Robert Slimmon,
We are submitting our application
for a Use Permit today. We are a
Non-Profit Club, chartered by the
American Motorcycle Association.
The AMA required that we submit
race dates and fees for 1983 last
December.

Our first race date is sanctioned
for February 27. Is there any
possibility of obtaining a temporary
Use Permit while our application
is being reviewed?

Any help and/or consideration
you can give us in this matter would
be most appreciated.

Thank you,
Gale Sushrigo

Coast Counties
Mini-Bike Club

2/11/83
Exhibit C

To;

Monterey County Planning Commission

Here is the information you requested concerning the Coast Counties Mini Bike Clubb track at the Monterey County Sheriffs Posses Grounds.

The track area as used is located on the Eastern one third of the parking area for rodeo events. This area is still used for over flow parking during large rodeo events such as the annual Junior Rodeo, High School Rodeo ect. The rough boundries of the track are as follows; on the East by a 15 to 25' high bluff which shields the track from the private property in that direction, on the North by a cross fence which separates the main rodeo area from a barley field, on the West by corral and holding pen fencing, and on the South by a spectator fence.

The track itself is 'D' or egg shaped with the widest turn of the flat track surface on the North end. Total length of the track is 1/5 mile measured at the center of the track. The width of the track surface varies from 25' on the straights to 35' in the corners. Inside the flat track we have laid out a rough scrambles type track which is used for scrambles events during the early Spring. We hold our rough scrambles early in the year to avoid track preparation problems which might occur if heavy rain fell to close to our race dates.

Parking for spectators and the pit area is behind the spectators fence to the South/West of the track. On race days the pit area for participants is marked off with lathes and pedestrian tape to separate the pits from the general parking area. During events no riding of any type of motorcycle is allowed outside of the pits. This is a club safety rule and is strictly enforced.

In the past seating for spectators has been very limited and we had advised them to bring their own lawn chairs. This winter however the club purchased a set of bleachers which will be set up behind the spectator fence and will seat up to 150 people.

The club has planned for 6 race dates in 1983. We will be having 3 rough scrambles and 3 flat track events. The dates for these events have been sanctioned by Dist. 36 of the A.M.A. and are as follows; the rough scrambles Feb. 27, Mar. 27 April 24, the flat tracks June 12, Aug. 21, and Oct. 16. Events start at 10:00 am and usually end before 5:00 pm.

At any of these races our average rider turn out is from 60 to 90 including mini bikes, sportsmen, and 3 wheelers. The number of our spectators will vary depending on the weather and conflicting events in the area but usually average s from about 100 to 150 people per race.

I hope this letter will cover the points we missed in our filing plan. If more information is needed please let me know if there is any further information you might require.

Thank you,

Barry C. Ballew
313 Medbury Ave.
Salinas Calif.
93906

Bob Lindero, Treasurer

1320 E. Market St.
Salinas, CA 93905
May, 20, 1983

Monterey County Planning Department
Monterey County Courthouse
Salinas, CA 93901

RE: Coast Counties Minibike Club Race Dates

Dear Sirs:

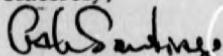
As requested in your decision to grant our Use Permit (#2936), we are notifying you of our scheduled race dates which are as follows:

June 12, 1983
Aug. 21, 1983
Oct. 16, 1983

In addition, we have three dates which were canceled at the beginning of the year. These dates are being rescheduled upon approval of our sanctioning body, The American Motorcycling Association, District 36. We will notify the Planning Department at the earliest date possible.

Thank you.

Sincerely,



Gale Santiago, Treasurer
Coast Counties Minibike Club



FILE COPY
DO NOT REMOVE

THIS PLAN IS HEREBY APPROVED IN CONFORMANCE
WITH CONDITION 5

1320 E. Market St.
Salinas, CA 93905
June 1, 1983

of PC-RES, 93-101 (PC-4727)
by Gale Santiago L. No. 7/5/83
Director of Planning

Monterey County Planning Commission
Monterey County Courthouse
Salinas, CA 93901

RE: COAST COUNTIES MINI BIKE CLUB PARKING LAYOUT

Dear Sirs:

All parking will be on Monterey County Sheriff's Posse Grounds property. The area used is unpaved, relatively flat ground. It is used primarily for parking during the roping events held by the Posse Association.

The area the Minibike Club would be using is divided into two parts. Referring to the enclosed map please note:

Section A is used as Pit Parking, being divided by the access road.

Section B is used for spectator parking, again divided by the access road.

Section A is separated from Section B by a pedestrian ribbon whose location can be changed as the need arises.

Using a parking stall measurement of 19 feet by 9 feet and allowing 25 feet aisle space, we figure each section can accommodate the following:

Section A - 90 vehicles
Section B - 100 plus vehicles.

As each of our events draw 200-300 individuals which includes about 65 riders and their families, this space has proved adequate.

Hoping this meets your requirements. If there are any further questions, please feel free to contact me at 424-6990.

Sincerely,
Gale Santiago
Gale Santiago
Coast Counties Minibike Club

Enc.

MONTEREY COUNTY

PLANNING DEPARTMENT



14881 422-8016 - P.O. BOX 1286 - SALINAS, CALIFORNIA 93902

E. W. DeMARS
DIRECTOR OF PLANNING

1/20/83

Coast Counties Mini-Bike Club
Mike DeQuaise
5 Lagunita Road
Salinas, CA 93506

Dear Applicant:

This is to notify you that a staff review of your Use Permit PC-9727 application finds it to be:

- incomplete, and more information is necessary. A list of the additional information required is attached.
- complete and has been placed on an agenda to determine environmental effect for _____. A copy of the staff's "Environmental Assessment and Recommendation" including date and time of your application will be sent to you prior to that meeting.
- complete and has been placed on an agenda to determine environmental effect and has been set for public hearing for _____.
- complete and has a categorically exempt environmental status. The application has been set for public hearing for _____.
- complete. The application has been set for public hearing for _____.

Feel free to contact us for any additional information you may require.

Sincerely,

MONTEREY COUNTY PLANNING DEPARTMENT

Francis Hunter

Exhibit C

PC-4727

COAST COUNTIES PC-4727

1. Approximately how many people (riders and spectators) do you anticipate during a single event?
2. How often will mini-bike events be held? What hours of the day?
3. Submit a plot plan of the mini-bike track, showing the dimensions of the track, setbacks from the property lines and topography.
4. Submit one copy of the schedule that was submitted to the American Motorcycle Association.

Exhibit C

MONTEREY COUNTY

PLANNING DEPARTMENT

14081 422-9010 - P.O. BOX 1200 - SALINAS, CALIFORNIA 93902

E. W. DeMARS
DIRECTOR OF PLANNING



2/23/83

Coast Counties Mini-Bike Club
Mike DeGuaise
5 Lagunita Road
Salinas, CA 93906

Dear Applicant:

This is to notify you that a staff review of your Use Permit No. 4727 application finds it to be:

Incomplete, and more information is necessary. A list of the additional information required is attached.

complete and has been placed on an agenda to determine environmental effect for 3/16/83. A copy of the staff's "Environmental Assessment and Recommendation" including date and time of your application will be sent to you prior to that meeting.

complete and has been placed on an agenda to determine environmental effect and has been set for public hearing for _____.

complete and has a categorically exempt environmental status. The application has been set for public hearing for _____.

complete. The application has been set for public hearing for _____.

Feel free to contact us for any additional information you may require.

Sincerely,

MONTEREY COUNTY PLANNING DEPARTMENT

[Signature]

Exhibit C

2. APPLICANT	<u>Coast Counties Mini-Bike Club (PC-4727)</u>
APPLICATION	Use Permit
EXISTING ZONING	"R-R-5 2 Ac. Min. Bldg. Site" District (Agricultural Residential)
GENERAL PLAN DESIGNATION	Public/Quasi-Public
PROPERTY DESCRIPTION	Located on portion Lot 11A Map of Natividad, Natividad area, fronting on Natividad Road and Old Natividad Road.
ASSESSOR'S PARCEL #	211-061-27 & 28
USE REQUESTED	To allow racing activities
APPEARANCES	Dave Carger, applicant
DISCUSSION	Carger inquired as to the reason that they could not race now when they had done it in the past. Stimmon replied that they were racing illegally because they did not have a use permit. He explained that this activity was brought to the department's attention by a complaint they had received.

3/16/83

pg 23

Carger explained that they hold these races once a month on the weekends from the hours of 9:00 a.m. to 3:30 p.m. six months out of the year. He stated that since he has been required to obtain a use permit he has lost a few months racing time and asked if the public hearing could be moved up so as not to loose any more time.

DeMars explained that it could be done even though it is not a common practice of the Commission.

Riddle inquired as where the proceeds go from this activity.

Carger replied that all proceeds go back into the bike club. He explained that this is a non-profit organization and they depend on various businesses that donate time and money for the bike club.

Jimenez felt that if it took three years for the complaints to reach the department that the races could not be much of a nuisance.

ACTION

Moved by Jimenez, seconded by Hendrick, and carried by unanimous vote of Commission present that Resolution No. 83-87 be adopted, finding that this project will not have a significant effect on the environment, directing that a Negative Declaration be prepared and that this matter be set for March 30, 1983 for public hearing.

19. APPLICANT

Coast Counties Mini-Bike Club (PC-4727)

APPLICATION

Public hearing for a Use Permit

EXISTING ZONING

"K-B-5 2 Ac. Min. Bldg. Site" District
(Agricultural Residential)

GENERAL PLAN DESIGNATION

Public/Quasi-Public

PROPERTY DESCRIPTION

Located on portion Lot 11A Map of
Natividad, Natividad area, fronting on
Natividad Road and Old Natividad
Road.

ASSESSOR'S PARCEL #

211-061-27 & 28

USE REQUESTED

To allow racing activities

ENVIRONMENTAL STATUS

Negative Declaration prepared.

APPEARANCES

Dave Crager, on behalf of applicant
Art Beecher, in support
Jerry Paul, in opposition
Amelia Harris, in opposition

DISCUSSION

5/30/83

Pg. 17, 18, 19

Slimmon read correspondence from the
Sheriff's Department, Public Works
Department, Salinas Rural Fire District
and the Health Department who all
recommended conditional approval.

Mr. Crager briefed the Commission as
to the club's activities and it's existence
in the area.

Mr. Paul was concerned with the on
going noise, no adequate parking and
the track being used without any
supervision.

Mrs. Harris read a letter from Mr. &
Mrs. Sinclair who opposed to the use
permit application and stated the
mini-bikes were a nuisance to the
residents of the area and also irritated
their horses.

Commissioner Varga suggested the
applicant contact the Parks Department
as to the possibility of using the
Laguna Seca Park race track for
future races.

ACTION

(1062)

The Chairman stated that a Negative
Declaration has been prepared on the
project and noted that no objections
have been received.

Moved by Jimenez, seconded by Calcagno,
and carried by the following vote of
Commission present that the prepared
Negative Declaration be adopted.

Exhibit C

Further moved by Jimenez, seconded by Calcagno, and carried by the following vote of Commission present that Resolution No. 83-121 be adopted, granting Use Permit No. 2936, subject to the following conditions:

Ayes: Caiotto, Calcagno, Glau, Jimenez, Varga

Noes: Riddle

Absent: Hendrick, Reaves

Abstain: Mill

1. Conform to the requirements of Monterey County Code, Title 10.6 (Noise Ordinance).
2. Obtain all necessary permits from the County Health Department.
3. Provide fire extinguishers at starting line, pit area and finish line during racing activities. Fire extinguishers should be 10BC type for flammable liquid type fires and electrical fires.
4. Fire Department to be notified when any racing activities occur.
5. Provide off street parking. Layout to be approved by Director of Planning.
6. That this permit allows a maximum of six days racing per year.
7. That the applicant notify the Monterey County Planning department of the scheduled race dates.
8. That the hours of operation shall be limited to 9:00 to 4:00 p.m. only.
9. That there be no unsupervised use of the tracks and no practice runs.
10. That this permit expire on March 30, 1984.

page 19
Item #19
5-30-83

(272)

Exhibit C

FILED

NEGATIVE DECLARATION

Mar 18 10 42 AM 1983

ERNEST A. MAGGIN,
MONTEREY COUNTY CLERK

RESPONSIBLE AGENCY COUNTY OF MONTEREY	DECISION MAKING BODY Planning Commission	DEPUTY	
PROJECT TITLE Coast Counties Mini-dike Club			
ADDRESS	CITY	STATE	ZIP CODE
Mike DeQuaise 5 Lagunita Road	Salinas	CA	93906
CONTACT PERSON	AREA CODE	PHONE	EXTENSION
LYNNE MOUNDAY, SENIOR PLANNER	408	422-9018	30

THIS PROPOSED PROJECT WILL NOT HAVE A SIGNIFICANT EFFECT ON THE ENVIRONMENT AS IT HAS BEEN FOUND:

- (a) That said project will not have the potential to significantly degrade the quality of the environment.
- (b) That said project will have no significant impact on long term environmental goals.
- (c) That said project will have no significant cumulative effect upon the environment.
- (d) That said project will not cause substantial adverse effects on human beings, either directly or indirectly.

PROJECT DESCRIPTION OF NATURE, PURPOSE, AND BENEFICIARIES

Use Permit to allow racing activities, located on portion Lot 11A Map of Natividad, Natividad area, fronting on Natividad Road and Old Natividad Road.

PROJECT LOCATION

Natividad Area

TIME PERIOD PROVIDED FOR REVIEW

March 30, 1983

ADDRESS WHERE COPY OF APPLICATION AND INITIAL STUDY IS AVAILABLE

- Monterey County Planning Department
- Monterey County Department of Building Inspection
P. O. Box 1208/Courthouse, Salinas, CA 93902

TO BE FILED WITH COUNTY CLERK WHEN NO SIGNIFICANT EFFECT IS FOUND.

Mar 18, 1983
DATE FILED

DC-4727
FILE REFERENCE #



RESOLUTION NO. 83-121

USE PERMIT NO. 2936

A.P. # 211-061-27 & 28

FINDINGS AND DECISION

In the matter of the application of

COAST COUNTIES MINI-BIKE CLUB (PC-4727)

for a Use Permit in accordance with Title 20 (Zoning) Chapter 20.96 (Use Permits) of the Monterey County Code, to allow racing activities, located on portion of Lot 11A Map of Natividad, Natividad area, fronting on Natividad Road and Old Natividad Road.

came on regularly for hearing before the Planning Commission on March 30, 1983

Said Planning Commission, having considered the application and the evidence presented relating thereto,

FINDINGS OF FACT

That the establishment, maintenance, or operation of the use or building applied for will not under the circumstances of the particular case, be detrimental to health, safety, peace, morals, comfort, and general welfare of persons residing or working in the neighborhood of such proposed use or be detrimental or injurious to property and improvements in the neighborhood or to the general welfare of the County.

DECISION

THEREFORE, It is the decision of said Planning Commission that said application for a Use Permit be granted as shown on the attached sketch and subject to the following conditions:

1. Conform to the requirements of Monterey County Code, Title 10.6 (Noise Ordinance).
2. Obtain all necessary permits from the County Health Department.
3. Provide fire extinguishers at starting line, pit area and finish line during racing activities. Fire extinguishers should be 10PC type for flammable liquid type fires and electrical fires.
4. Fire department to be notified when any racing activities occur.
5. Provide off street parking. Layout to be approved by Director of Planning.
6. That this permit allows a maximum of six days racing per year.
7. That the applicant notify the Monterey County Planning Department of the scheduled race dates.
8. That the hours of operation shall be limited to 9:00 a.m. to 4:00 p.m. only.
9. That there be no unsupervised use of the tracks and no practice runs.
10. That this permit expire on March 30, 1984.

PASSED AND ADOPTED this _____ day of _____ March _____, 1983, by the following vote:

Ayes: Callotto, Calcagno, Glau, Jimenez, Varga

Noes: Riddle

Absent: Hendric, Reeves

ABSTAIN: Hill

E. W. DeMARS
Secretary of the Planning Commission

Copy of this decision was mailed to the applicant on April 8, 1983

IF ANYONE WISHES TO APPEAL THIS DECISION, AN APPEAL FORM MUST BE COMPLETED AND SUBMITTED TO THE CLERK OF THE BOARD OF SUPERVISORS ALONG WITH THE APPROPRIATE FILING FEE ON OR BEFORE April 18, 1983

Exhibit C

COUNTY OF MONTEREY
STATE OF CALIFORNIA

FILED

APR 4 2 58 PM 1983

NOTICE OF DETERMINATION

The EIR or Negative Declaration and record of project approval may be examined at the Monterey County Planning Department/240 Church Street, Room 218, Salinas, California.

RESPONSIBLE AGENCY _____ DECISION-MAKING BODY _____

COUNTY OF MONTEREY _____ PLANNING COMMISSION _____

PROJECT TITLE _____ BOARD OF SUPERVISORS _____

Coast Counties Mini-Bike Club _____

ADDRESS _____

Mike DeQuaise 5 Lugunita Road Salinas, _____

CONTACT PERSON _____ TELEPHONE _____

LANCE H. MOUNEY, SENIOR PLANNER (409)422-9018 _____

PROJECT DESCRIPTION OF NATURE, PURPOSE, AND BENEFICIARIES _____

Use Permit to allow racing activities, located on portion Lot 11A Map of Natividad, Natividad area, fronting on Natividad Road and Old Natividad Road.

PROJECT LOCATION _____

Natividad Area _____

DATE APPROVAL _____ CONDITIONAL APPROVAL _____

March 30, 1983 _____

NEGATIVE DECLARATION FILED _____ DATE _____

YES NO

March 18, 1983 _____

LEAD PREPARED _____ NOTICE OF COMPLETION FILED _____

YES NO

DRAFT HEARING

SIGNIFICANT IMPACT _____ EXTERMINATING FACTORS _____

YES NO

*Public Resources Code Section 21181(a) requires local agencies to submit this information to the County Clerk. The filing of the notice starts a 30-day statute of limitations on court challenges to the approval of the project under Public Resources Code Section 21167. Failure to file the notice results in the statute of limitations being extended to 180 days.

FC-4/27
FILE REFERENCE

April 4, 1983

Exhibit C

PC-4727

RESOLUTION NO. 89-87
MONTEREY COUNTY PLANNING COMMISSION
STATE OF CALIFORNIA

WHEREAS: The Planning Commission of the County of Monterey, State of California, is considering the Use Permit application of Coast Counties Mini-Bike Club, to allow racing activities, located on portion of Lot 11A Map of Natividad, Natividad area, fronting on Natividad Road and Old Natividad Road.

WHEREAS: Said Planning Commission has considered the Assessment of Environmental Effect filed by JERRY WILKENSAN, and

WHEREAS: Said Planning Commission has considered the comments of the Planning Department of the County of Monterey,

NOW, THEREFORE, BE IT RESOLVED:

1. That the Planning Commission of the County of Monterey finds:
 - (a) That said project will not have the potential to degrade the quality of the environment.
 - (b) That said project will have no impact on long term environmental goals.
 - (c) That said project will have no cumulative effect upon the environment.
 - (d) That said project will not cause substantial adverse effects on human beings, either directly or indirectly.
2. That said Planning Commission finds that said project will have no significant effect upon the environment.
3. That the Secretary of this Planning Commission be and he is hereby directed to execute and file with the County Clerk of the County of Monterey a duplicate copy of the attached Negative Declaration.

Regularly passed and adopted by the Planning Commission of the County of Monterey, State of California, on the 16th day of March 19 89, by the following vote:

Ayes: Cailotto, Caloagno, Jimenez, Hendrick, Riddle, Reeves

Noes: None

Absent: Glau, Mill, Varga

ATTEST:

E. W. DeMARS, SECRETARY

PETER CAILOTTO, CHAIRMAN

INSPECTION CHECKLIST

FILE NUMBER:


PC-4727

Exhibit C

TOTAL NUMBER OF CONDITIONS: _____

Condition Number	Cleared by, and/or coordinated with: (Dept./Agency and name of contact)	Cleared (Bldg. Permit) Date & Initial	Cleared (Final) Date & Initial
1			
2			
3			
4			
5	EAD	7-5-83 D997	
6			
7			
8			
9			
10			
11			
12			
13			
14			
15			
16			
17			
18			
19			
20			

Exhibit C



Attachment B

Vehicle Occupancy Survey and Roadway ADT Counts

Exhibit C

Prepared by NDS/ATD

VOLUME

Natividad Rd W/O Old Natividad Rd

Day: Sunday
Date: 4/16/2023

City: Salinas
Project #: CA23_080102_001

DAILY TOTALS					NB	SB	EB		WB		Total			
					0	0					2,669	2,655	5,324	
AM Period	NB	SB	EB	WB	TOTAL	PM Period	NB	SB	EB	WB	TOTAL			
00:00					0	12:00			54	41	95			
00:15					0	12:15			55	49	104			
00:30					0	12:30			53	45	98			
00:45					0	12:45			67	229	38	173	105	402
01:00					0	13:00			83	40	123			
01:15					0	13:15			71	52	123			
01:30					0	13:30			80	47	127			
01:45					0	13:45			65	299	57	196	122	495
02:00					0	14:00			60	61	121			
02:15					0	14:15			67	38	105			
02:30					0	14:30			59	73	132			
02:45					0	14:45			57	243	56	228	113	471
03:00					0	15:00			56	67	123			
03:15					0	15:15			55	41	96			
03:30					0	15:30			50	63	113			
03:45					0	15:45			53	214	55	226	108	440
04:00					0	16:00			52	66	118			
04:15					0	16:15			46	56	102			
04:30					0	16:30			49	41	90			
04:45					0	16:45			40	187	45	208	85	395
05:00					0	17:00			46	62	108			
05:15					0	17:15			30	70	100			
05:30					0	17:30			35	57	92			
05:45					0	17:45			41	152	63	252	104	404
06:00			15	5	20	18:00			31	60	91			
06:15			10	5	15	18:15			34	72	106			
06:30			14	15	29	18:30			40	88	128			
06:45			15	54	7	32	22	86	32	137	69	289	101	426
07:00			15	10	25	19:00			22	100	122			
07:15			26	9	35	19:15			40	89	129			
07:30			16	11	27	19:30			26	45	71			
07:45			17	74	15	45	32	119	34	122	45	279	79	401
08:00			22	8	30	20:00			32	46	78			
08:15			31	20	51	20:15			22	38	60			
08:30			41	23	64	20:30			17	43	60			
08:45			44	138	13	64	57	202	27	98	29	156	56	254
09:00			45	22	67	21:00			21	30	51			
09:15			54	18	72	21:15			18	27	45			
09:30			39	17	56	21:30			17	22	39			
09:45			48	186	30	87	78	273	10	66	13	92	23	158
10:00			55	29	84	22:00			7	12	19			
10:15			48	23	71	22:15			8	18	26			
10:30			48	28	76	22:30			4	10	14			
10:45			43	194	28	108	71	302	8	27	13	53	21	80
11:00			47	28	75	23:00			6	5	11			
11:15			61	35	96	23:15			9	9	18			
11:30			62	45	107	23:30			3	8	11			
11:45			58	228	31	139	89	367	3	21	6	28	9	49
TOTALS				874	475	1349	TOTALS			1795	2180	3975		
SPLIT %				64.8%	35.2%	25.3%	SPLIT %			45.2%	54.8%	74.7%		

DAILY TOTALS					NB	SB	EB		WB		Total
					0	0					2,669
AM Peak Hour			11:15	11:30	11:30	PM Peak Hour			12:45	18:30	13:00
AM Pk Volume			235	166	395	PM Pk Volume			301	346	495
Pk Hr Factor			0.948	0.847	0.923	Pk Hr Factor			0.907	0.865	0.974
7 - 9 Volume	0	0	212	109	321	4 - 6 Volume	0	0	339	460	799
7 - 9 Peak Hour			08:00	07:45	08:00	4 - 6 Peak Hour			16:00	17:00	17:00
7 - 9 Pk Volume	0	0	138	66	202	4 - 6 Pk Volume	0	0	187	252	404
Pk Hr Factor	0.000	0.000	0.784	0.717	0.789	Pk Hr Factor	0.000	0.000	0.899	0.900	0.935

Exhibit C

Prepared by NDS/ATD

VOLUME

Natividad Rd W/O Old Natividad Rd

Day: Monday
Date: 4/17/2023

City: Salinas
Project #: CA23_080102_001

DAILY TOTALS					NB	SB	EB		WB		Total
					0	0					457
AM Period	NB	SB	EB	WB	TOTAL	PM Period	NB	SB	EB	WB	TOTAL
00:00			2	7	9	12:00					0
00:15			2	3	5	12:15					0
00:30			3	2	5	12:30					0
00:45			2	9	7	12:45					0
					19						
01:00			3	6	9	13:00					0
01:15			1	3	4	13:15					0
01:30			2	8	10	13:30					0
01:45			4	10	2	13:45					0
					19						
02:00			5	1	6	14:00					0
02:15			6	3	9	14:15					0
02:30			5	0	5	14:30					0
02:45			4	20	0	14:45					0
					4						
03:00			10	3	13	15:00					0
03:15			9	1	10	15:15					0
03:30			13	3	16	15:30					0
03:45			20	52	2	15:45					0
					9						
04:00			16	3	19	16:00					0
04:15			29	3	32	16:15					0
04:30			45	5	50	16:30					0
04:45			39	129	6	16:45					0
					17						
05:00			46	5	51	17:00					0
05:15			58	8	66	17:15					0
05:30			62	9	71	17:30					0
05:45			71	237	8	17:45					0
					30						
06:00					0	18:00					0
06:15					0	18:15					0
06:30					0	18:30					0
06:45					0	18:45					0
07:00					0	19:00					0
07:15					0	19:15					0
07:30					0	19:30					0
07:45					0	19:45					0
08:00					0	20:00					0
08:15					0	20:15					0
08:30					0	20:30					0
08:45					0	20:45					0
09:00					0	21:00					0
09:15					0	21:15					0
09:30					0	21:30					0
09:45					0	21:45					0
10:00					0	22:00					0
10:15					0	22:15					0
10:30					0	22:30					0
10:45					0	22:45					0
11:00					0	23:00					0
11:15					0	23:15					0
11:30					0	23:30					0
11:45					0	23:45					0
TOTALS			457	98	555	TOTALS					0
SPLIT %			82.3%	17.7%	100.0%	SPLIT %					0.0%

DAILY TOTALS					NB	SB	EB		WB		Total
					0	0					457
AM Peak Hour			05:00	05:00	05:00	PM Peak Hour					
AM Pk Volume			237	30	267	PM Pk Volume					
Pk Hr Factor			0.835	0.833	0.845	Pk Hr Factor					
7 - 9 Volume	0	0	0	0	0	4 - 6 Volume	0	0	0	0	0
7 - 9 Peak Hour						4 - 6 Peak Hour					
7 - 9 Pk Volume	0	0	0	0	0	4 - 6 Pk Volume	0	0	0	0	0
Pk Hr Factor	0.000	0.000	0.000	0.000	0.000	Pk Hr Factor	0.000	0.000	0.000	0.000	0.000

Exhibit C

Prepared by NDS/ATD

VOLUME

Old Natividad Rd S/O Natividad Rd

Day: Sunday
Date: 4/16/2023

City: Salinas
Project #: CA23_080102_002

DAILY TOTALS						NB	SB					Total
						889	831					0
AM Period	NB	SB	EB	WB	TOTAL	PM Period	NB	SB	EB	WB	TOTAL	
00:00					0	12:00	18	18			36	
00:15					0	12:15	17	8			25	
00:30					0	12:30	21	8			29	
00:45					0	12:45	28	84	6	40	34	
01:00					0	13:00	37	9			46	
01:15					0	13:15	27	13			40	
01:30					0	13:30	39	8			47	
01:45					0	13:45	38	141	15	45	53	
02:00					0	14:00	27	12			39	
02:15					0	14:15	29	10			39	
02:30					0	14:30	29	27			56	
02:45					0	14:45	32	117	11	60	43	
03:00					0	15:00	35	15			50	
03:15					0	15:15	25	12			37	
03:30					0	15:30	20	10			30	
03:45					0	15:45	25	105	6	43	31	
04:00					0	16:00	18	20			38	
04:15					0	16:15	18	15			33	
04:30					0	16:30	21	11			32	
04:45					0	16:45	14	71	11	57	25	
05:00					0	17:00	11	19			30	
05:15					0	17:15	10	7			17	
05:30					0	17:30	8	16			24	
05:45					0	17:45	11	40	23	65	34	
06:00	1	2			3	18:00	12	23			35	
06:15	4	0			4	18:15	5	32			37	
06:30	0	0			0	18:30	12	53			65	
06:45	7	12	1	3	8	18:45	11	40	44	152	55	
07:00	3	4			7	19:00	5	104			109	
07:15	8	2			10	19:15	10	56			66	
07:30	6	2			8	19:30	5	15			20	
07:45	4	21	4	12	8	19:45	10	30	21	196	31	
08:00	2	1			3	20:00	8	8			16	
08:15	9	6			15	20:15	5	8			13	
08:30	9	2			11	20:30	5	13			18	
08:45	8	28	2	11	10	20:45	8	26	5	34	13	
09:00	8	4			12	21:00	3	4			7	
09:15	15	5			20	21:15	4	6			10	
09:30	6	1			7	21:30	3	1			4	
09:45	11	40	8	18	19	21:45	1	11	3	14	4	
10:00	13	7			20	22:00	3	1			4	
10:15	8	4			12	22:15	1	2			3	
10:30	11	10			21	22:30	1	1			2	
10:45	15	47	6	27	21	22:45	2	7	1	5	3	
11:00	14	7			21	23:00	1	0			1	
11:15	17	8			25	23:15	3	0			3	
11:30	17	17			34	23:30	1	2			3	
11:45	15	63	13	45	28	23:45	1	6	2	4	3	
TOTALS	211	116			327	TOTALS	678	715			1393	
SPLIT %	64.5%	35.5%			19.0%	SPLIT %	48.7%	51.3%			81.0%	

DAILY TOTALS						NB	SB					Total
						889	831					0
AM Peak Hour	11:45	11:15			11:15	PM Peak Hour	13:00	18:30			18:30	
AM Pk Volume	71	56			123	PM Pk Volume	141	257			295	
Pk Hr Factor	0.845	0.778			0.854	Pk Hr Factor	0.904	0.618			0.677	
7 - 9 Volume	49	23	0	0	72	4 - 6 Volume	111	122	0	0	233	
7 - 9 Peak Hour	08:00	07:30			08:00	4 - 6 Peak Hour	16:00	17:00			16:00	
7 - 9 Pk Volume	28	13	0	0	39	4 - 6 Pk Volume	71	65	0	0	128	
Pk Hr Factor	0.778	0.542	0.000	0.000	0.650	Pk Hr Factor	0.845	0.707	0.000	0.000	0.842	

Exhibit C

Prepared by NDS/ATD

VOLUME

Old Natividad Rd S/O Natividad Rd

Day: Monday
Date: 4/17/2023

City: Salinas
Project #: CA23_080102_002

DAILY TOTALS					NB	SB	EB		WB		Total
					10	12					0
AM Period	NB	SB	EB	WB	TOTAL	PM Period	NB	SB	EB	WB	TOTAL
00:00	0	0			0	12:00					0
00:15	1	1			2	12:15					0
00:30	0	0			0	12:30					0
00:45	1	2	1	2	2	12:45					0
01:00	1	1			2	13:00					0
01:15	0	0			0	13:15					0
01:30	0	0			0	13:30					0
01:45	1	2	0	1	1	13:45					0
02:00	0	0			0	14:00					0
02:15	0	1			1	14:15					0
02:30	0	0			0	14:30					0
02:45	0	0	1		0	14:45					0
03:00	0	0			0	15:00					0
03:15	0	1			1	15:15					0
03:30	0	0			0	15:30					0
03:45	0	0	1		0	15:45					0
04:00	0	0			0	16:00					0
04:15	0	0			0	16:15					0
04:30	0	1			1	16:30					0
04:45	3	3	1	2	4	16:45					0
05:00	0	1			1	17:00					0
05:15	0	1			1	17:15					0
05:30	1	1			2	17:30					0
05:45	2	3	2	5	4	17:45					0
06:00					0	18:00					0
06:15					0	18:15					0
06:30					0	18:30					0
06:45					0	18:45					0
07:00					0	19:00					0
07:15					0	19:15					0
07:30					0	19:30					0
07:45					0	19:45					0
08:00					0	20:00					0
08:15					0	20:15					0
08:30					0	20:30					0
08:45					0	20:45					0
09:00					0	21:00					0
09:15					0	21:15					0
09:30					0	21:30					0
09:45					0	21:45					0
10:00					0	22:00					0
10:15					0	22:15					0
10:30					0	22:30					0
10:45					0	22:45					0
11:00					0	23:00					0
11:15					0	23:15					0
11:30					0	23:30					0
11:45					0	23:45					0
TOTALS	10	12			22	TOTALS					0
SPLIT %	45.5%	54.5%			100.0%	SPLIT %					0.0%

DAILY TOTALS					NB	SB	EB		WB		Total
					10	12					0
AM Peak Hour	04:45	05:00			04:45	PM Peak Hour					
AM Pk Volume	4	5			8	PM Pk Volume					
Pk Hr Factor	0.333	0.625			0.500	Pk Hr Factor					
7 - 9 Volume	0	0	0	0	0	4 - 6 Volume	0	0	0	0	0
7 - 9 Peak Hour						4 - 6 Peak Hour					
7 - 9 Pk Volume	0	0	0	0	0	4 - 6 Pk Volume	0	0	0	0	0
Pk Hr Factor	0.000	0.000	0.000	0.000	0.000	Pk Hr Factor	0.000	0.000	0.000	0.000	0.000

Exhibit C

Prepared by NDS/ATD

VOLUME

Natividad Rd E/O Old Natividad Rd

Day: Sunday
Date: 4/16/2023

City: Salinas
Project #: CA23_080102_003

DAILY TOTALS					NB	SB	EB		WB		Total			
					0	0					2,089	2,124	4,213	
AM Period	NB	SB	EB	WB	TOTAL	PM Period	NB	SB	EB	WB	TOTAL			
0:00					0	12:00			41	29	70			
0:15					0	12:15			42	47	89			
0:30					0	12:30			43	47	90			
0:45					0	12:45			48	174	38	161	86	335
1:00					0	13:00			49	35	84			
1:15					0	13:15			47	40	87			
1:30					0	13:30			44	45	89			
1:45					0	13:45			40	180	52	172	92	352
2:00					0	14:00			44	59	103			
2:15					0	14:15			49	39	88			
2:30					0	14:30			35	59	94			
2:45					0	14:45			37	165	58	215	95	380
3:00					0	15:00			40	65	105			
3:15					0	15:15			36	33	69			
3:30					0	15:30			33	57	90			
3:45					0	15:45			34	143	54	209	88	352
4:00					0	16:00			36	51	87			
4:15					0	16:15			35	43	78			
4:30					0	16:30			32	35	67			
4:45					0	16:45			31	134	36	165	67	299
5:00					0	17:00			38	47	85			
5:15					0	17:15			23	66	89			
5:30					0	17:30			31	48	79			
5:45					0	17:45			39	131	47	208	86	339
6:00			14	3	17	18:00			28	49	77			
6:15			7	10	17	18:15			38	48	86			
6:30			14	14	28	18:30			38	44	82			
6:45			8	43	6	33	18:45		42	146	48	189	90	335
7:00			9	6	15	19:00			48	29	77			
7:15			16	7	23	19:15			47	40	87			
7:30			12	12	24	19:30			24	32	56			
7:45			12	49	11	36	19:45		27	146	33	134	60	280
8:00			21	7	28	20:00			26	37	63			
8:15			25	18	43	20:15			18	34	52			
8:30			32	16	48	20:30			13	27	40			
8:45			38	116	13	54	20:45		18	75	25	123	43	198
9:00			36	19	55	21:00			19	27	46			
9:15			45	17	62	21:15			14	23	37			
9:30			33	18	51	21:30			14	19	33			
9:45			37	151	21	75	21:45		9	56	11	80	20	136
10:00			45	25	70	22:00			4	12	16			
10:15			42	20	62	22:15			7	15	22			
10:30			42	24	66	22:30			4	10	14			
10:45			28	157	24	93	22:45		7	22	11	48	18	70
11:00			35	19	54	23:00			5	5	10			
11:15			50	31	81	23:15			6	9	15			
11:30			51	37	88	23:30			3	4	7			
11:45			49	185	20	107	23:45		2	16	4	22	6	38
TOTALS				701	398	1099	TOTALS			1388	1726	3114		
SPLIT %				63.8%	36.2%	26.1%	SPLIT %			44.6%	55.4%	73.9%		

DAILY TOTALS					NB	SB	EB		WB		Total
					0	0					2,089
AM Peak Hour			11:15	11:45	11:45	PM Peak Hour			12:45	14:15	14:15
AM Pk Volume			191	143	318	PM Pk Volume			188	221	382
Pk Hr Factor			0.936	0.761	0.883	Pk Hr Factor			0.959	0.850	0.910
7 - 9 Volume	0	0	165	90	255	4 - 6 Volume	0	0	265	373	638
7 - 9 Peak Hour			8:00	8:00	8:00	4 - 6 Peak Hour			16:15	17:00	17:00
7 - 9 Pk Volume	0	0	116	54	170	4 - 6 Pk Volume	0	0	136	208	339
Pk Hr Factor	0.000	0.000	0.763	0.750	0.833	Pk Hr Factor	0.000	0.000	0.895	0.788	0.952

Exhibit C

Prepared by NDS/ATD

VOLUME

Natividad Rd E/O Old Natividad Rd

Day: Monday
Date: 4/17/2023

City: Salinas
Project #: CA23_080102_003

DAILY TOTALS					NB	SB	EB		WB		Total
					0	0					449
AM Period	NB	SB	EB	WB	TOTAL	PM Period	NB	SB	EB	WB	TOTAL
0:00			3	6	9	12:00					0
0:15			1	2	3	12:15					0
0:30			2	2	4	12:30					0
0:45			2	8	6	12:45					0
1:00			3	6	9	13:00					0
1:15			1	4	5	13:15					0
1:30			2	7	9	13:30					0
1:45			3	9	2	13:45					0
2:00			5	1	6	14:00					0
2:15			6	2	8	14:15					0
2:30			5	0	5	14:30					0
2:45			4	20	0	14:45					0
3:00			10	3	13	15:00					0
3:15			9	0	9	15:15					0
3:30			12	3	15	15:30					0
3:45			21	52	3	15:45					0
4:00			16	3	19	16:00					0
4:15			28	4	32	16:15					0
4:30			47	5	52	16:30					0
4:45			36	127	6	16:45					0
5:00			46	4	50	17:00					0
5:15			57	7	64	17:15					0
5:30			60	10	70	17:30					0
5:45			70	233	6	17:45					0
6:00					0	18:00					0
6:15					0	18:15					0
6:30					0	18:30					0
6:45					0	18:45					0
7:00					0	19:00					0
7:15					0	19:15					0
7:30					0	19:30					0
7:45					0	19:45					0
8:00					0	20:00					0
8:15					0	20:15					0
8:30					0	20:30					0
8:45					0	20:45					0
9:00					0	21:00					0
9:15					0	21:15					0
9:30					0	21:30					0
9:45					0	21:45					0
10:00					0	22:00					0
10:15					0	22:15					0
10:30					0	22:30					0
10:45					0	22:45					0
11:00					0	23:00					0
11:15					0	23:15					0
11:30					0	23:30					0
11:45					0	23:45					0
TOTALS			449	92	541	TOTALS					0
SPLIT %			83.0%	17.0%	100.0%	SPLIT %					0.0%

DAILY TOTALS					NB	SB	EB		WB		Total
					0	0					449
AM Peak Hour			5:00	4:45	5:00	PM Peak Hour					
AM Pk Volume			233	27	260	PM Pk Volume					
Pk Hr Factor			0.832	0.675	0.855	Pk Hr Factor					
7 - 9 Volume	0	0	0	0	0	4 - 6 Volume	0	0	0	0	0
7 - 9 Peak Hour						4 - 6 Peak Hour					
7 - 9 Pk Volume	0	0	0	0	0	4 - 6 Pk Volume	0	0	0	0	0
Pk Hr Factor	0.000	0.000	0.000	0.000	0.000	Pk Hr Factor	0.000	0.000	0.000	0.000	0.000

Exhibit C

Event On: 4/16/2023

Start Time: 1:00 PM

Attendance

Arrival Time # of Occupants

11:38 4

11:42 3

11:44 6

11:45 6

11:48 7

11:52 8

11:57 4

12:25 6

12:26 2

12:27 4

12:30 5

12:36 2

12:51 3

12:52 5

12:55 4

12:56 3

12:57 4

12:58 4

12:59 5

1:01 2

1:07 4

1:08 5

1:10 5

1:11 3

1:12 5

1:13 2

1:13 4

1:14 5

1:14 5

1:14 2

1:14 2

1:14 3

1:14 5

1:15 2

1:15 4

1:16 4

1:16 4

Average Occupancy 4.08

Drop Off Rate 5.4%

% PH Trips Arriving 60%

% PH Trips Departing 85%

15 Min Bin

Observed Attendees

11:30 13

11:45 25

12:00 19

12:15 12

12:30 7

12:45 28

1:00 52

1:15 14

Drop-Off

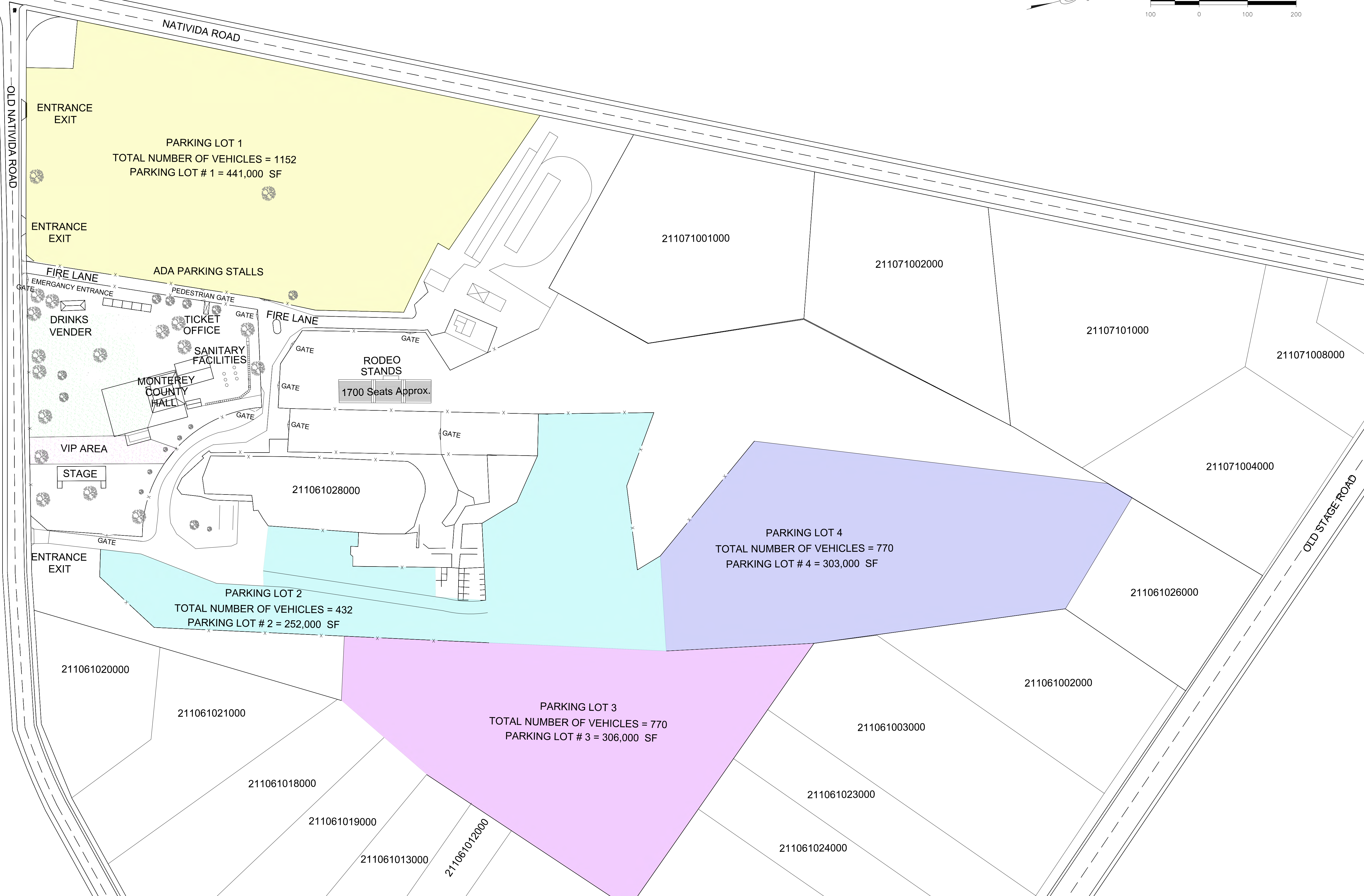
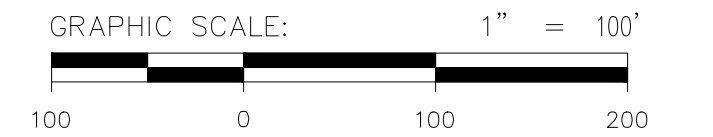
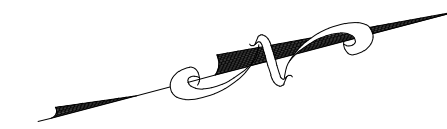
Drop-Off

Exhibit C

Estiamted attendees	Percent	Cumulative %
28	10%	10%
31	11%	22%
19	7%	29%
36	13%	42%
18	7%	48%
47	17%	66%
52	19%	85%
42	15%	100%

Attachment C

Detailed On-Site Parking Layout

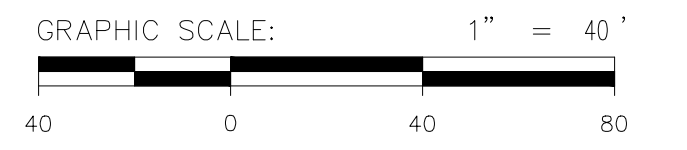
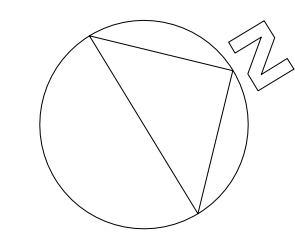


SITE LAYOUT
SCALE = 1" = 100'

C:\Users\rizo\Desktop\Edgard\GF Layout.dwg, 10/16/2021 11:26:23 AM, DWG To PDF.pc3

REV: 6/2/21
MONTEREY COUNTY SHERIFF'S POSSE GROUNDS

EMPRESAS AMECA	DESIGNED BY: E. RIZO	NO.	DATE	REVISION	MONTEREY COUNTY SHERIFF'S POSSE GROUNDS	SCALE: AS NOTED
	DRAWN BY: E. RIZO					DATE: OCTOBER 15, 2021
	CHECKED BY: E. RIZO				SITE LAYOUT PLANS	SHEET: SHEET 1
	CAD DWG NAME: XXX					SHEET 1 OF 2



NATIVIDA ROAD

OLD NATIVIDA ROAD

ENTRANCE
EXIT

ENTRANCE
EXIT

PARKING LOT 1

TOTAL NUMBER OF VEHICLES = 1152
1129 PARKING STALLS (9' X 22')

PARKING LOT # 1 = 441,000 SF

23 ADA PARKING STALLS (9' X 22')

FIRE LANE

EMERGENCY ENTRANCE

PEDESTRIAN GATE

GATE

FIRE LANE

DRINKS
VENDER

FOOD
VENDERS

TICKET
OFFICE

GATE

PARKING LAYOUT
SCALE = 1" = 40'

EMPRESAS AMECA

MONTEREY COUNTY SHERIFF'S POSSE
GROUNDS

DESIGNED BY:
E. RIZO
DRAWN BY:
E. RIZO
CHECKED BY:
E. RIZO
CAD DWG NAME:
XXX

NO.	DATE	REVISION

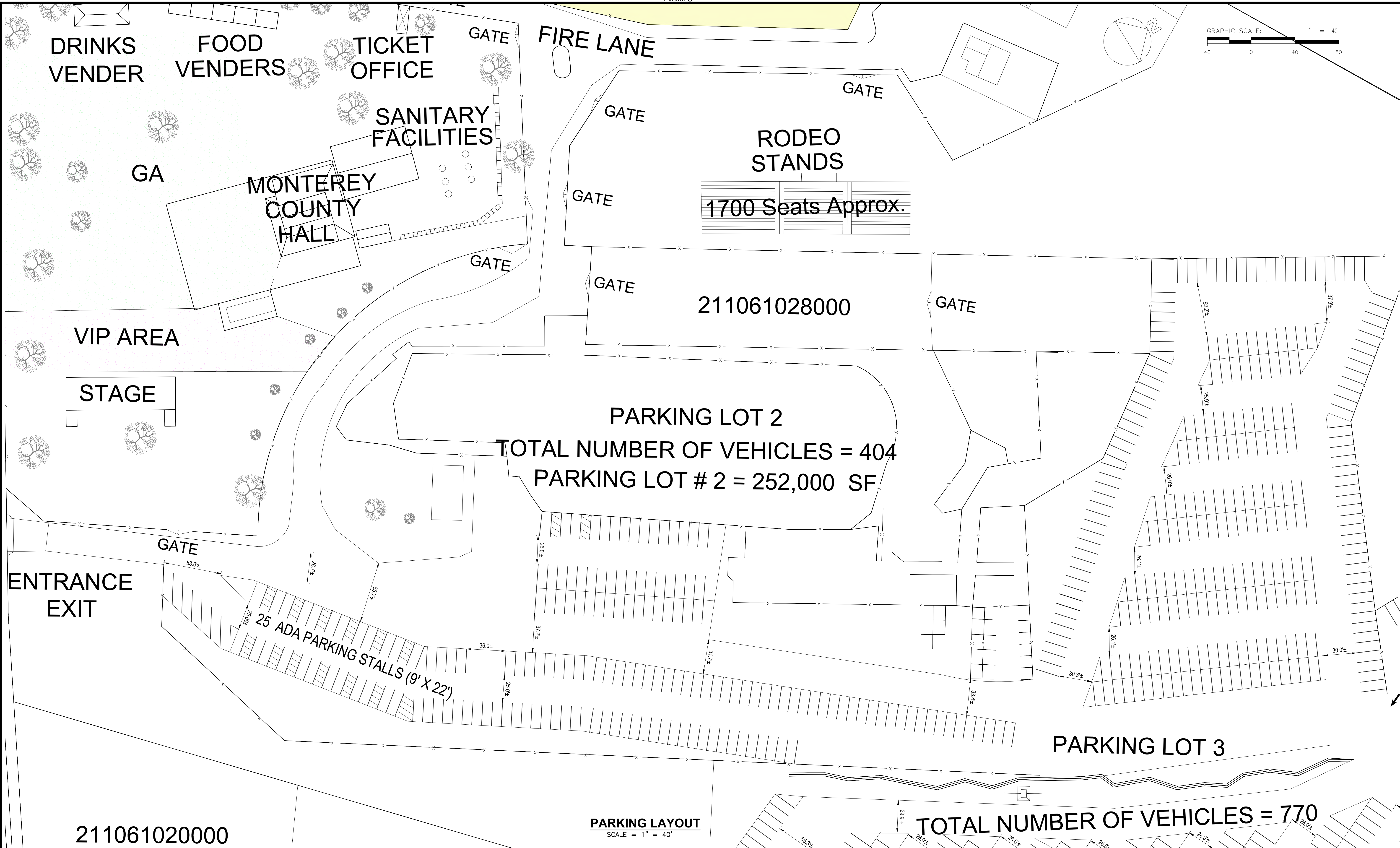
PARKING LOT #1 LAYOUT PLANS

SCALE: AS NOTED
DATE: AUGUST 20, 2021
SHEET:
SHEET A
SHEET 1 OF 1

C:\Users\rizo\Desktop\Edgard\GF Layout.dwg, 10/16/2021 11:21:24 AM, DWG To PDF.pc3

FULL SCALE PLOT SIZE: 22" X 34"

MONTEREY COUNTY SHERIFF'S POSSE GROUNDS



211061020000

PARKING LAYOUT
SCALE = 1" = 40'

TOTAL NUMBER OF VEHICLES = 770

EMPRESAS AMECA	
----------------	--

DESIGNED BY: E. RIZO	NO.	DATE	REVISION
DRAWN BY: E. RIZO			
CHECKED BY: E. RIZO			
CAD DWG NAME: XXX			

MONTEREY COUNTY SHERIFF'S POSSE GROUNDS	
PARKING LOT #2 LAYOUT PLANS	

SCALE: AS NOTED
DATE: AUGUST 20, 2021
SHEET: SHEET B SHEET 1 OF 1

C:\Users\rizo\Desktop\Edgard\GF Layout.dwg, 10/16/2021 11:38:24 AM, DWG To PDF.pc3

MONTEREY COUNTY SHERIFF'S POSSE GROUNDS