

Attachment E

This page intentionally left blank.

PLN240186

File Name: MOSS RICHARD F & BETTINA E MOSS TRS

Project Planner: Phil Angelo

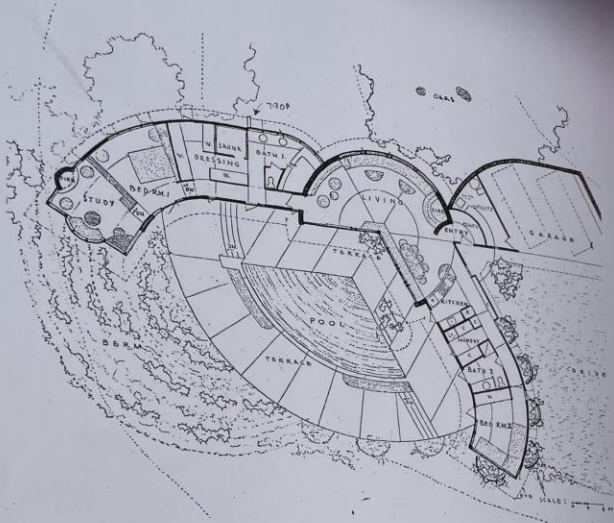
Site Visit Date: August 27, 2024











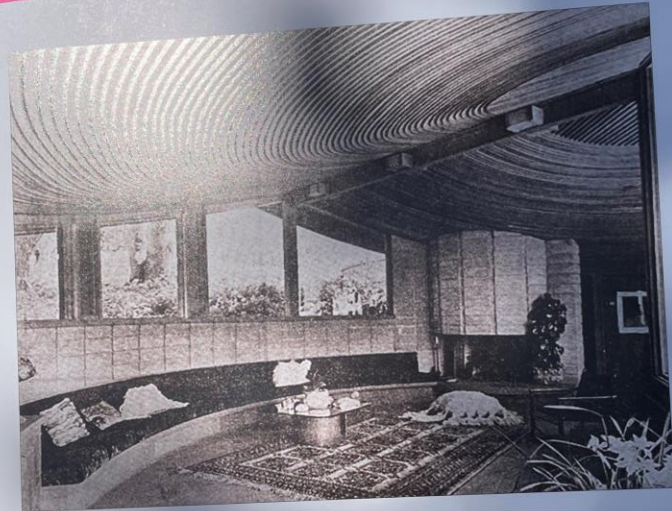
"What we had was a ridge site with a panoramic view—and the wind coming from the same direction as the view," Mark said. His solution was to open the house to the view, but to use part of the building itself to block the wind: he spread the bedroom wings wide, like sheltering arms, with the house's back to the mountain.

The plan is shaped like an open door-hinge. The central core is a circle with one third removed. The wings radiate out at a 120-degree angle and curl in at their ends, to focus the view for the rooms at the ends. The pool and its terrace are tucked in, away from the wind, between the wings.

Expressing the curving nature of the house, Mark designed a ceiling made up of redwood laths. He tells it: "Contractors! Sometimes they make a decision on the basis of their past experience. For instance, for that house, I had redwood boards all over the ceiling. Each end had to be cut at a certain angle to nail on to these radiating rafters. So when they took a look at that, when they were figuring out their costs and so on, the contractor said, 'Oh boy, this is really going to cost something.' and so on, the contractor said, 'Oh boy, this is really going to cost something.' and so on, the contractor said, 'Oh boy, this is really going to cost something.' Maybe we could do something less expensive.' So I said, 'All right, let's try, look at this soundboard, which is cheap, it's 4x8 sheets. You cut it up and throw away the pieces and then strip it with wood.' So yes, they thought they'd go for that and they gave [the clients] a price on it. So when they got through, the contractor said, 'Well, we would have been better off—less expensive, if we'd used the first idea just using the boards.'"



Mark's wife, Barbara, carries this photo in her wallet. It is her favorite of Mark's ceilings.



ing from house to spread the mountain. circle with terrace are



Mark's wife, Barbara, carries this photo in her wallet. It is her favorite of Mark's ceilings.

made up on the boards all radiating their costs something. y, look at away the r that and actor said.































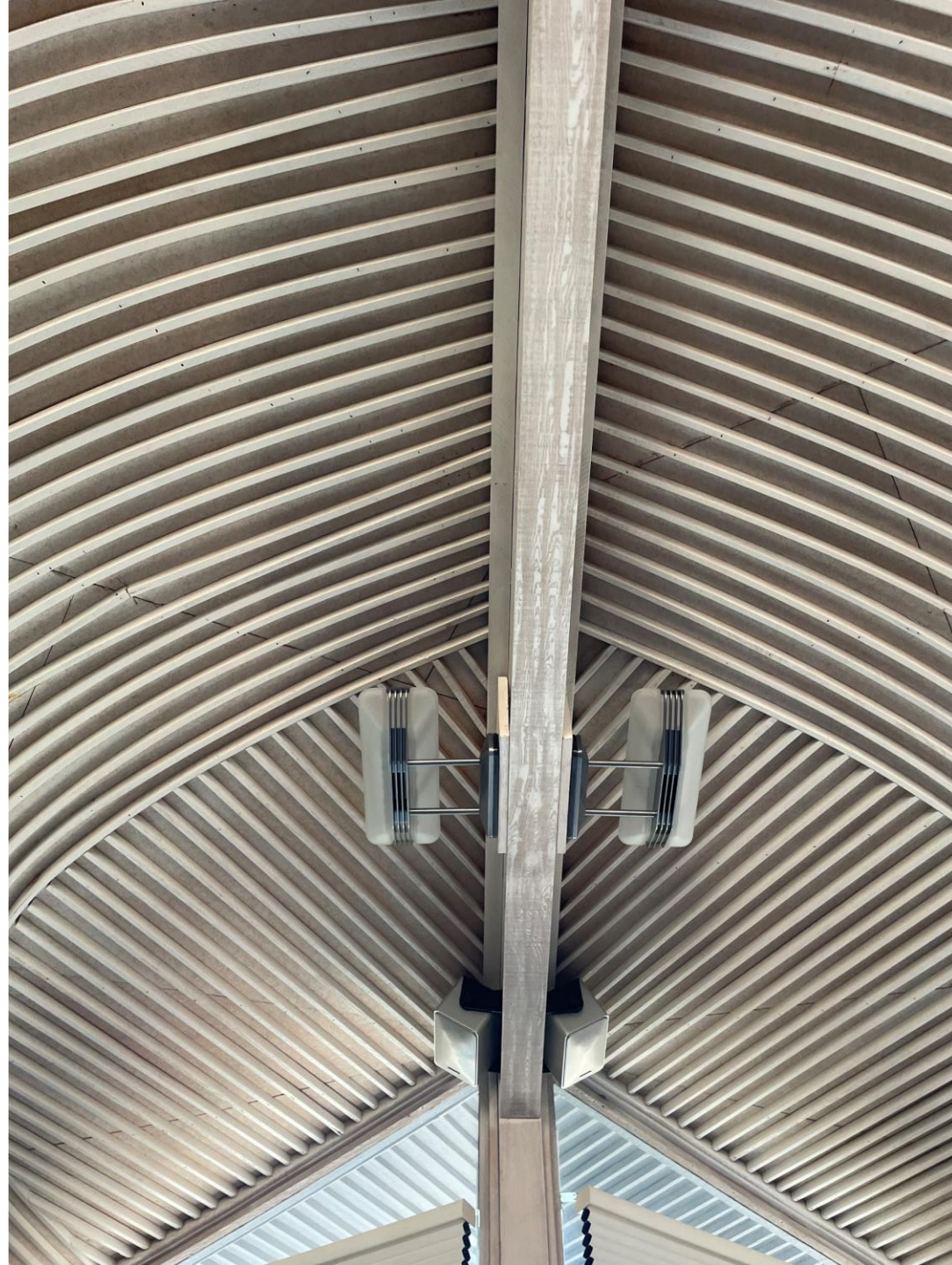




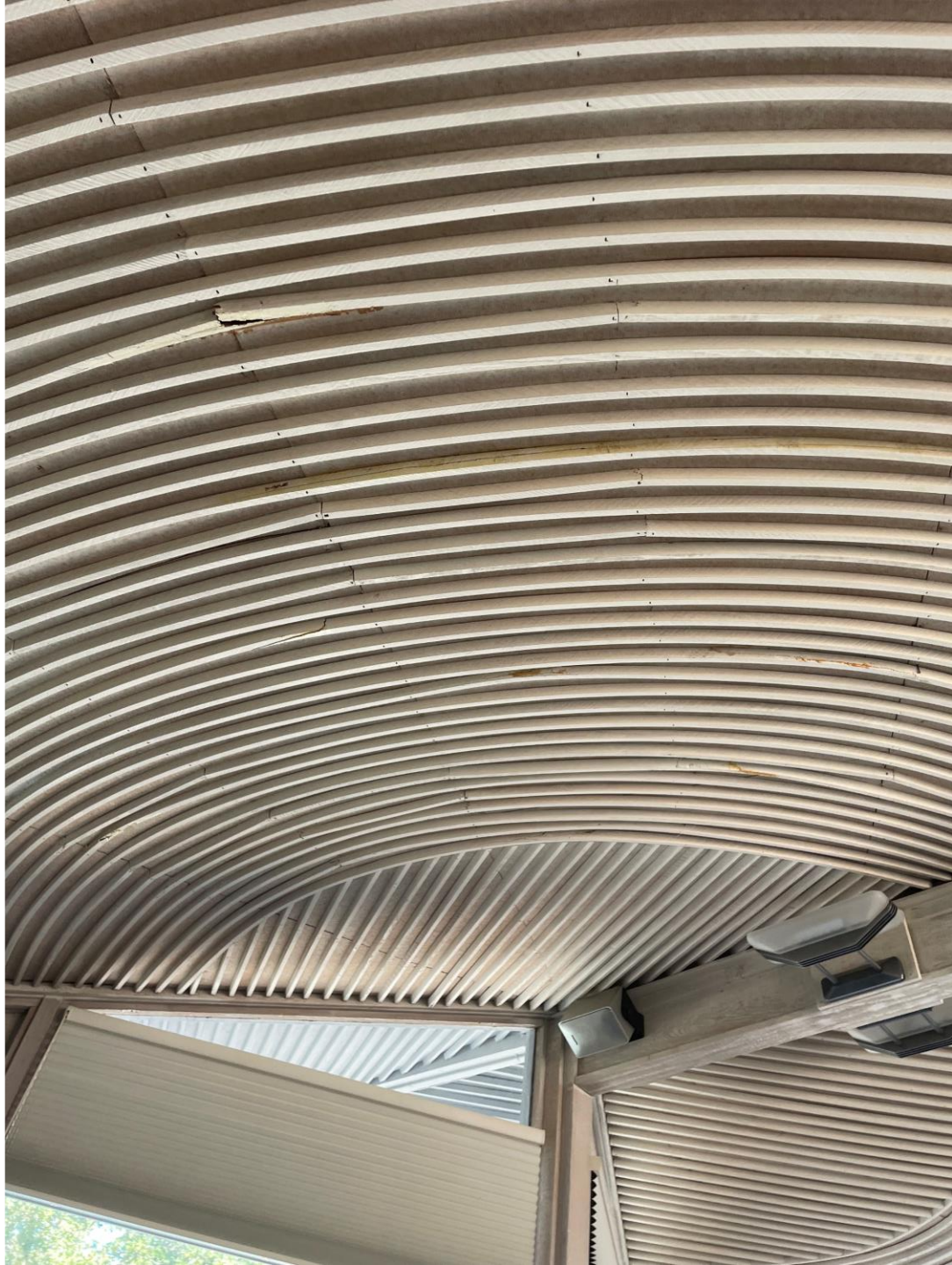
















This page intentionally left blank