



Grazing Lease Program



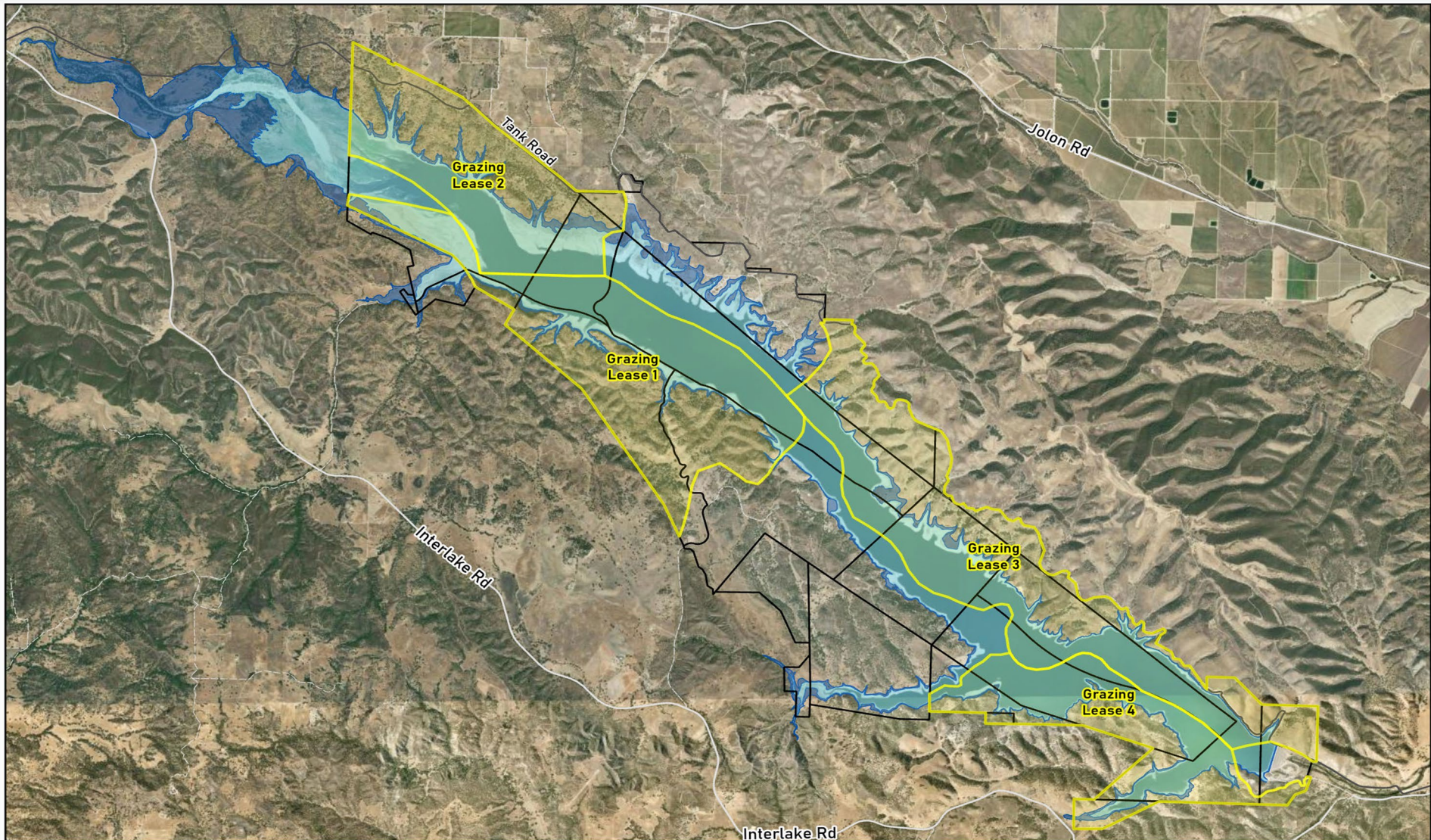
Agenda

1. Grazing Lease Overview
2. Update on program changes
3. Timeline
4. Questions

Grazing Lease Overview

- Grazing program began in the 1960's
- Total of 16, 400 acres, 10,300 acres above the high-water mark.
- San Antonio 4 leases
- Nacimiento 5 leases
- Management tool to protect lands and preserve the open space around Nacimiento and San Antonio

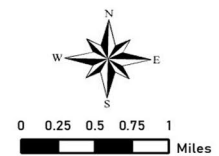


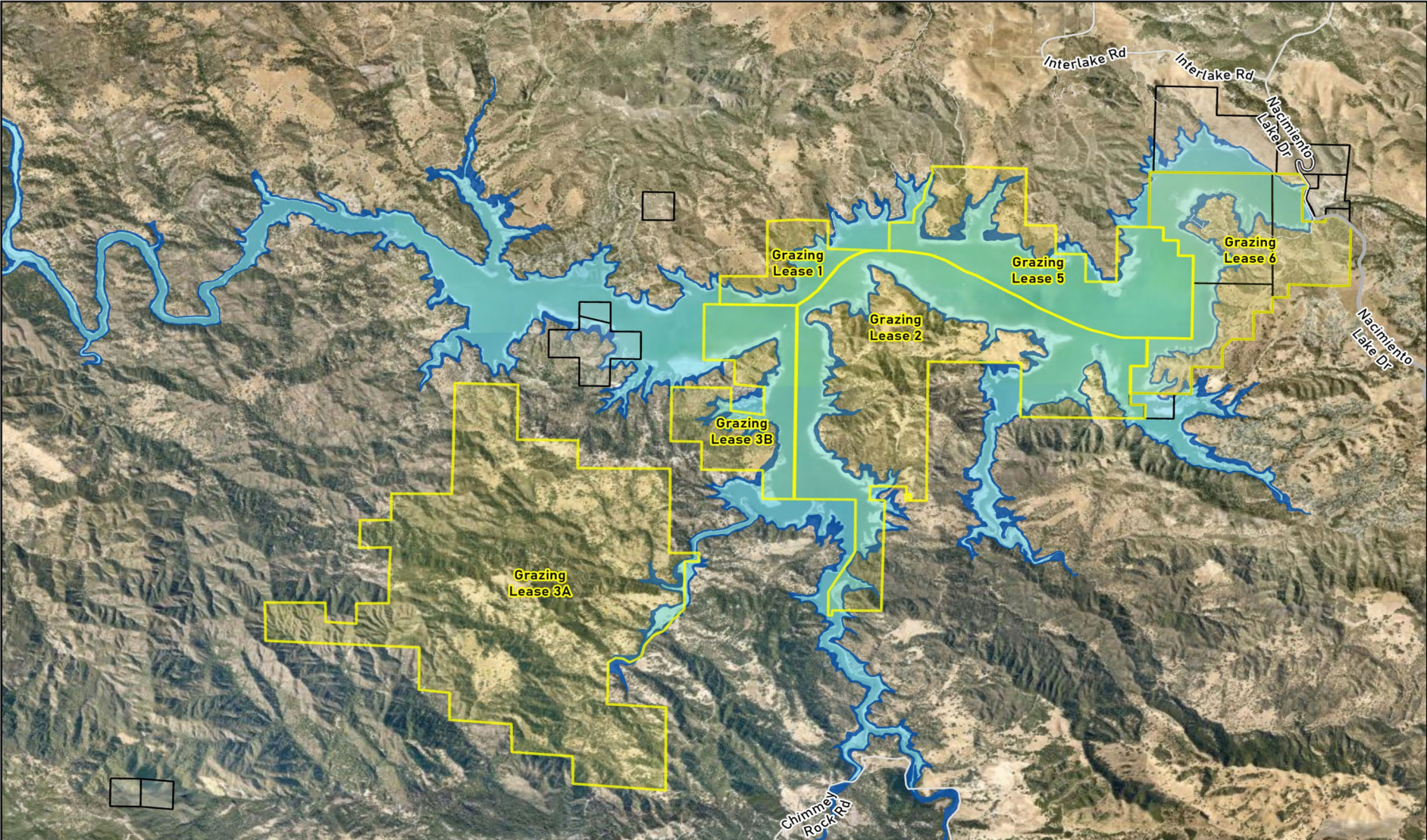


San Antonio Reservoir
Grazing Leases and
MCWRA Owned Parcels

- Legend**
- Lease Boundary
 - MCWRA Owned Parcels
 - 780-Foot High Water Mark
 - 800-Foot Floodage Easement

Lease	Acres Above HWM 780	Acres Below HWM 780	Total Acres
1	1240	1094	2334
2	999	719	1718
3	1509	1190	2699
4	664	683	1347

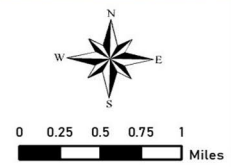




Nacimiento Reservoir
Grazing Leases and
MCWRA Owned Parcels

- Legend**
- Lease Boundary
 - MCWRA Owned Parcels
 - 800-Foot High Water Mark
 - 825-Foot Floodage Easement

Lease	Acres Above HWM 800	Acres Below HWM 800	Total Acres
1	168	141	309
2	1325	1202	2527
3A	3917	32	3949
3B	357	401	758
5	347	874	1221
6	699	534	1233



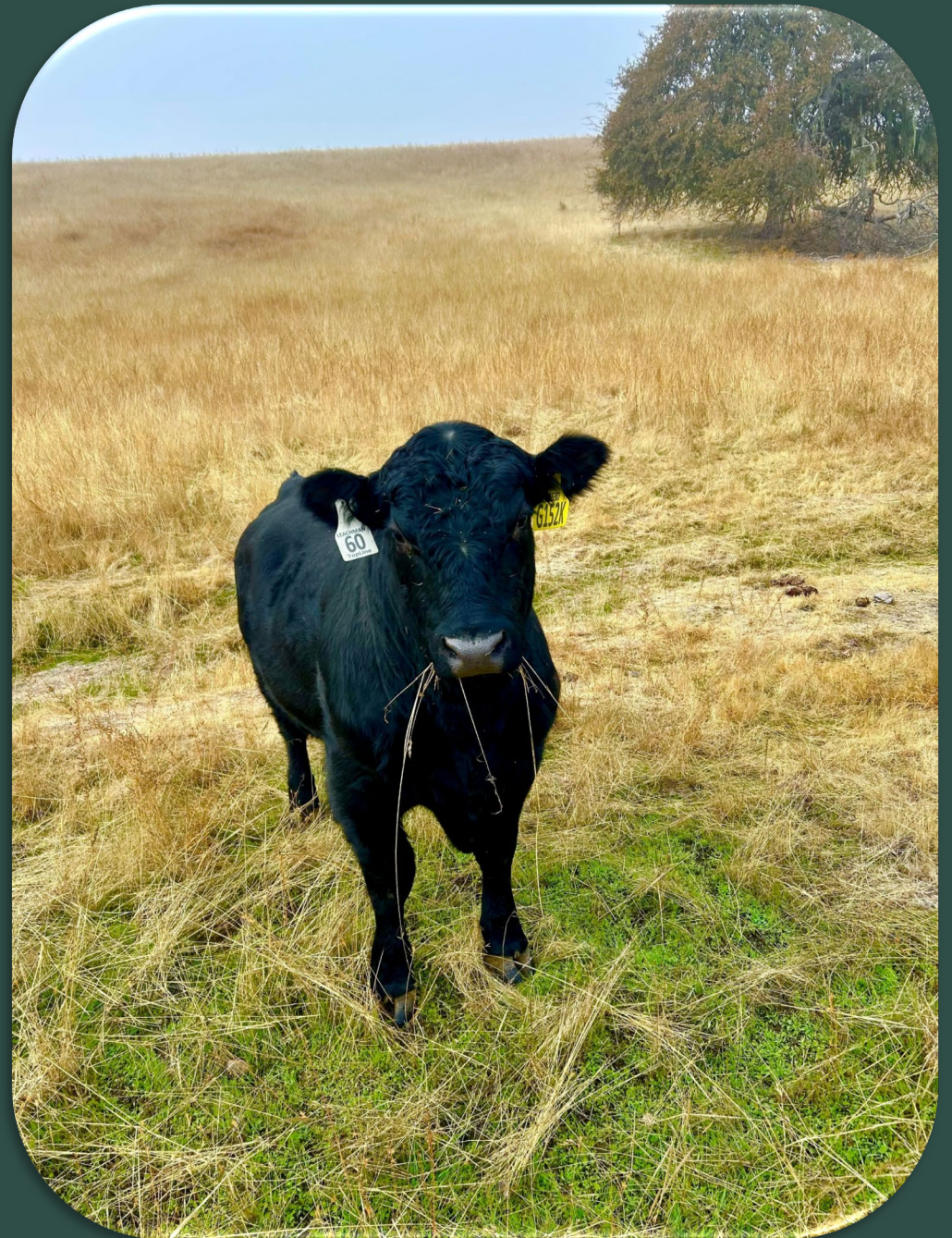
Program updates & changes



- Revised and updated current lease to clarify unclear provisions
- Extending lease term to 10 years
- Combining leases (SA 1 & 2), (SA 4 & Naci 1)
- Establishing clear processes and guidelines
- Implementation of fees
- Pre-bid qualification requirements (competitive bid process)
- Goal to reinvest revenue into property improvements
- Identifying survey and protection areas
- Grazing Land Management Plan (GLMP)

Timeline

- Website program information – May 2026
- Onsite tours – June 2026
- Pre-certification/qualification – June 2026
- Bidding Auction – July 2026
- Award of lease – August 2026
- New term start – November 1, 2026





Questions