

Future of Public Health Funding Update

Health, Housing, Homelessness, and
Human Services Committee



June 18, 2026



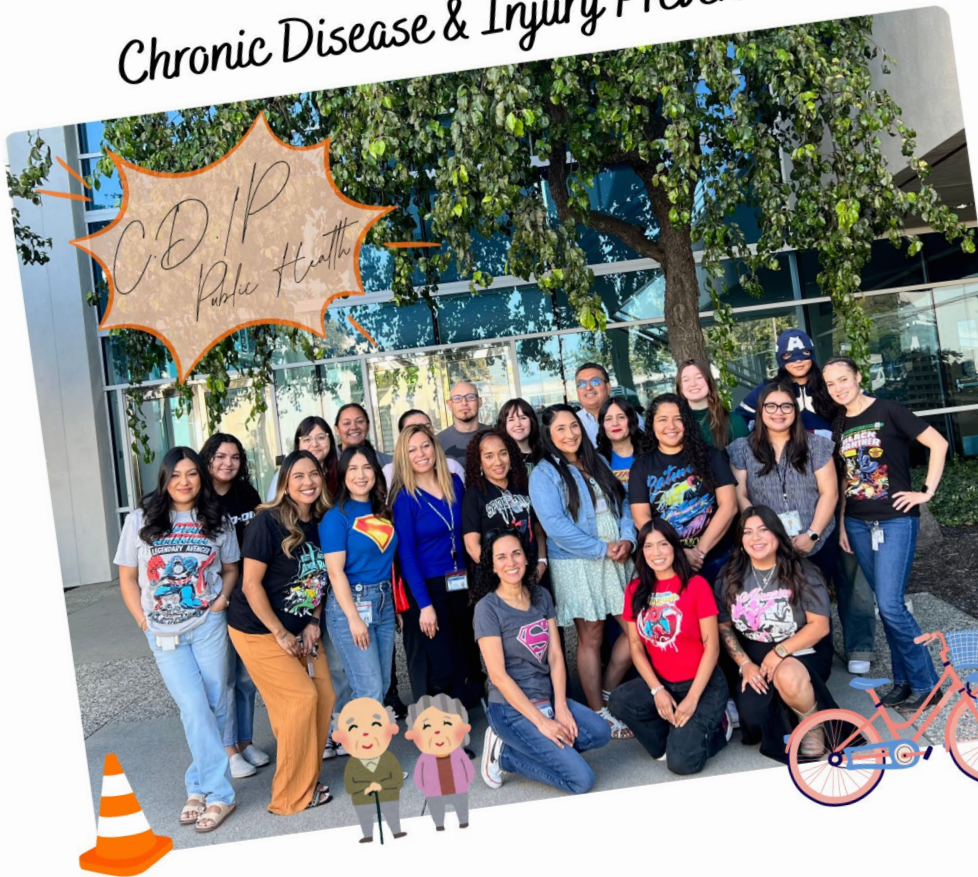
Agenda

- Public Health Bureau Overview/Purpose of Presentation
 - Kristy Michie, Assistant Director of Public Health
- Community Health Indicators
 - Brandon Gates, Public Health Program Manager II
- Future of Public Health Funding
 - Emilio Saavedra, Management Analyst III
- Future of Public Health Funding Accomplishments
 - Dr. Edward Moreno, Health Officer and Public Health Director
- Comments and Questions

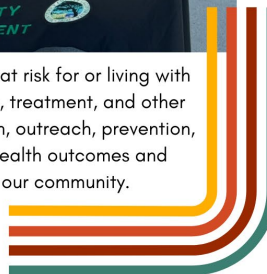
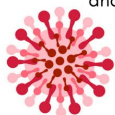


Public Health Bureau Overview

Chronic Disease & Injury Prevention



HIV Prevention Programs supports those at risk for or living with HIV by connecting them to testing, care, treatment, and other essential services. We focus on education, outreach, prevention, and linkage to care to help improve health outcomes and reduce the transmission of HIV in our community.



California Children Services (CCS)



Public Health Preparedness

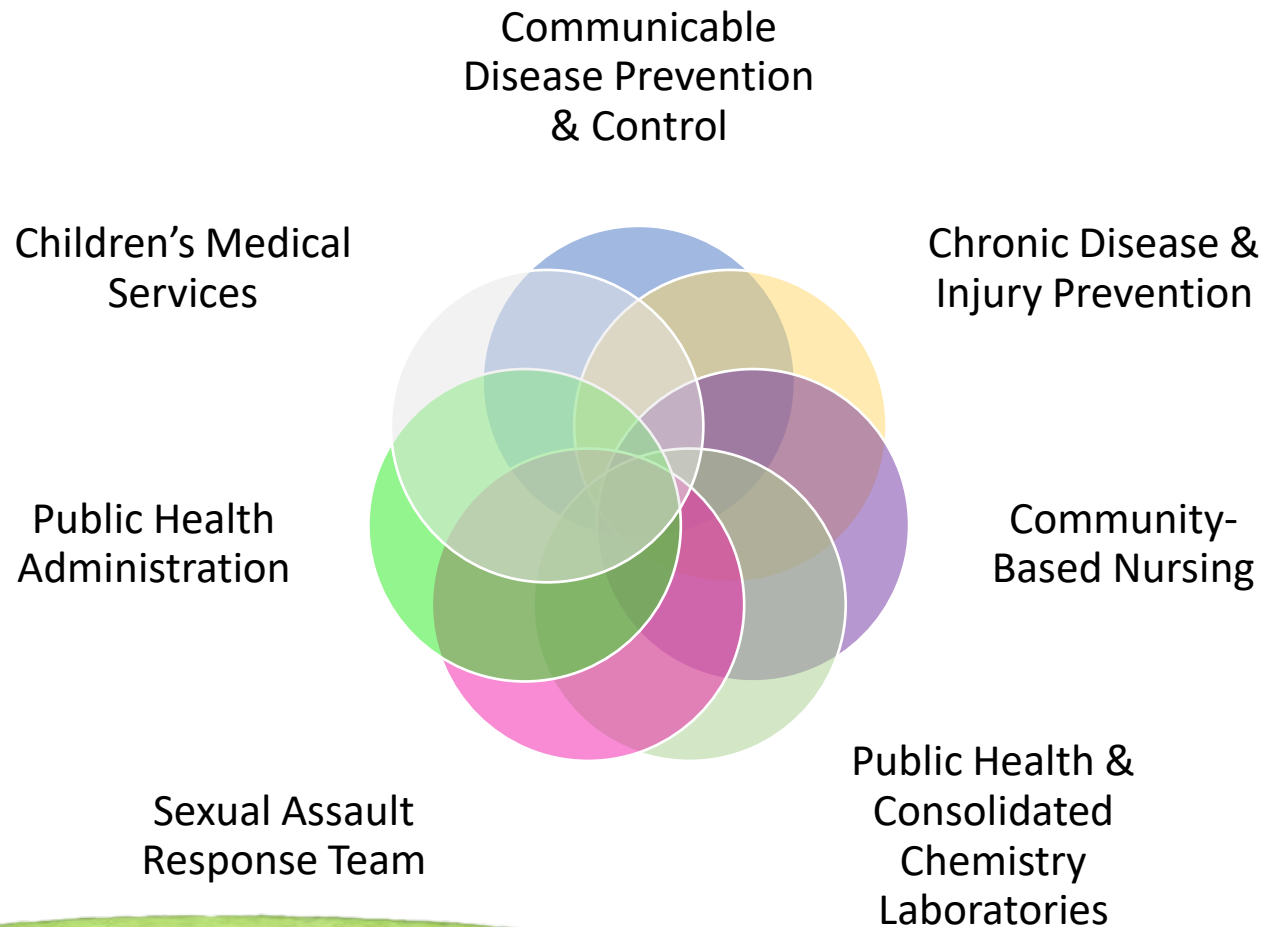


Public Health

- Teach groups of people how to reduce their risk of illness and injuries
- Investigate causes of infectious diseases and control their spread
- Advocate for public health policies and laws
- Determine community health trends
- Help healthcare facilities to prepare for disasters like fires, floods, earthquakes, and hurricanes
- Work to improve maternal and early childhood health



Public Health Teams



- 200 FTE
- \$48 million budget (FY2025-2026)
 - Most from grants, fees, and Health Realignment
- 7 divisions and 30+ programs
- Services in 8 locations and in homes, parks, and workplaces
- Presenting today to fulfill one of the requirements for Future of Public Health funding



Community Health Indicators

Medical Therapy Unit



Vital Records /
Medical Marijuana ID Program



We always know who's coming or going 24/7.



Epidemiology & Surveillance Unit



We catch the clues, so you don't catch the flu!

The Epidemiology Unit investigates infectious disease outbreaks and analyzes data for public health surveillance.



Morbidity in Monterey County

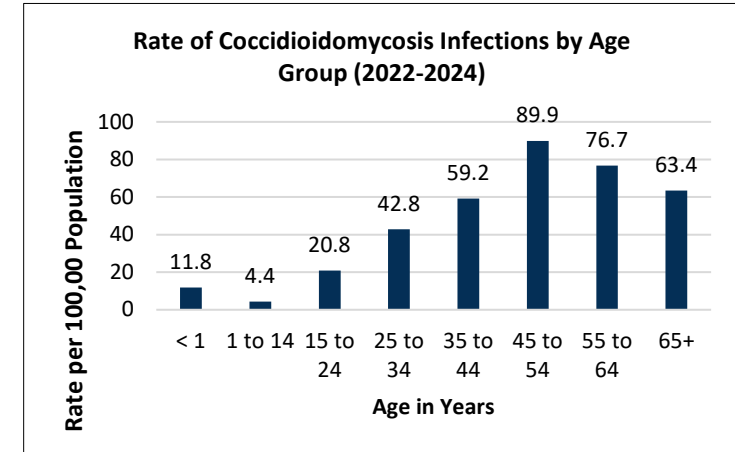
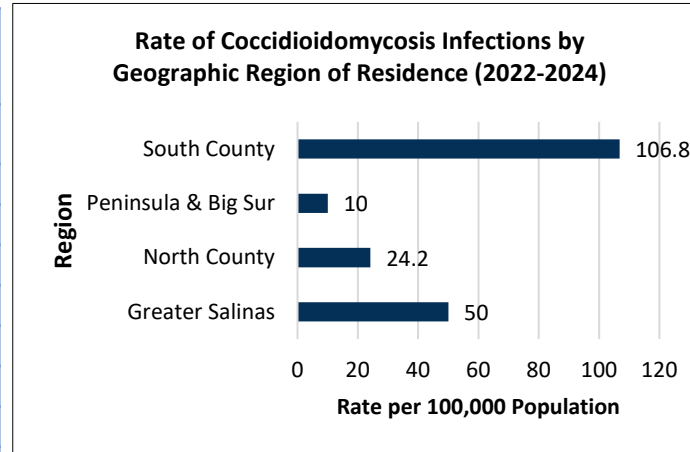
Communicable Diseases

Rate of Communicable Disease Infections* Among Monterey County Residents (2024)	
Disease	Rate Per 100,000 Population
Chlamydia	478.9
Coccidioidomycosis (Valley Fever)	79.5
Gonorrhea	63.8
Campylobacteriosis	20.1
Syphilis, Early (Primary, Secondary, Early Latent)	10.6
Salmonellosis	10.2
Shigellosis	5.1
HIV/AIDS - Incidence	4.9
E. coli	4.4
Giardiasis	3.1
Tuberculosis (Clinically Active)	3.1

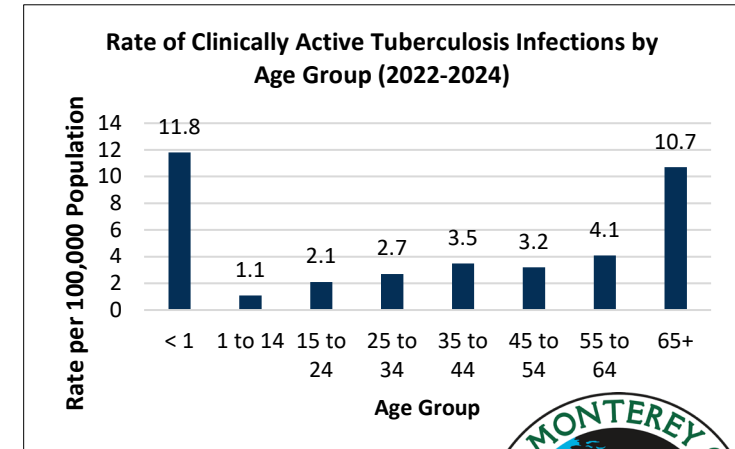
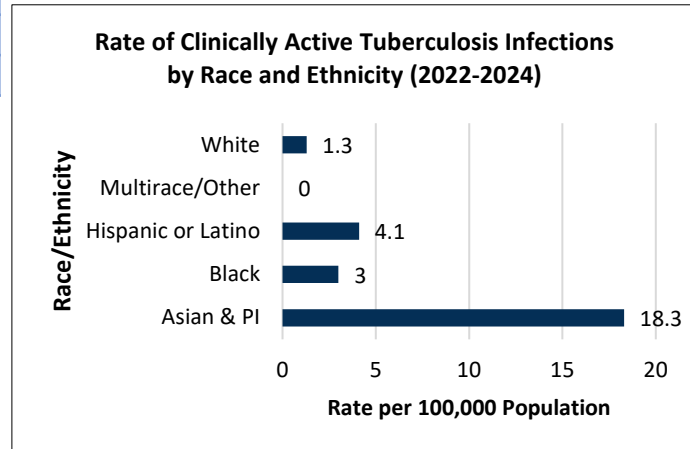
*Data does not include COVID-19

- **Valley Fever increased in 2024**, rising to **79.5 per 100,000** from 32.7 per 100,000 in 2023.
 - **South County has the highest Valley Fever burden** (106.8 per 100,000), far exceeding other regions.
- **Clinically active TB rates are highest among Asian & Pacific Islander residents** (18.3 per 100,000).
- **TB rates are highest among infants (<1 year) and older adults (65+)**

Coccidioidomycosis (Valley Fever)



Tuberculosis (Clinically Active)



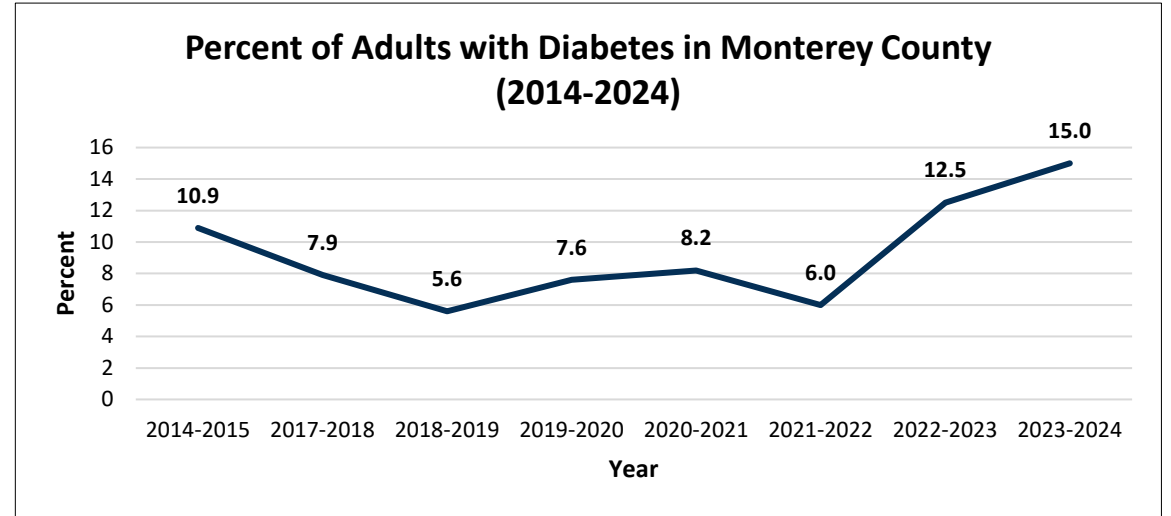
Morbidity in Monterey County

Hospitalizations

Age-Adjusted Rate of Hospitalizations in Monterey County by Race/Ethnicity (2021-2024)						
Cause	Asian	Black/African American	Latino	Native Hawaiian/Pacific Islander	White	American Indian/Alaskan Native
Septicemia	457.6	1,015.6	697.2	964.0	576.5	498.5
Heart failure	135.0	718.1	227.2	624.1	214.1	--
Cardiac dysrhythmias	112.5	278.3	115.6	221.4	191.4	--
Diabetes mellitus	98.7	420.5	227.6	--	93.3	--
Pneumonia (not caused by tuberculosis)	117.4	282.1	152.2	242.1	125.4	--

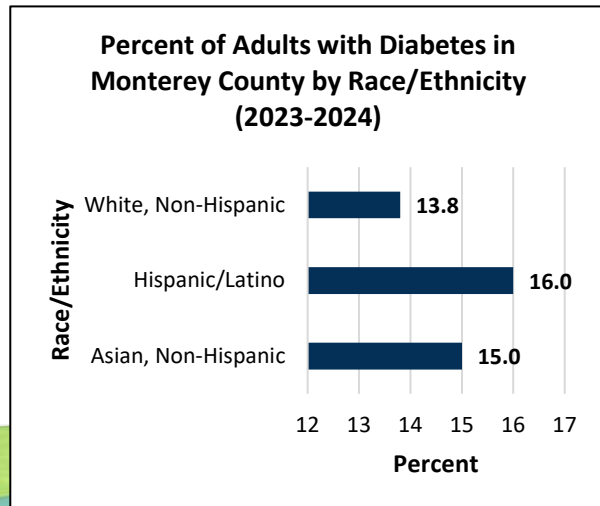
Source: California Community Burden of Disease Engine

Diabetes in Adults



Source: DataShare Monterey County

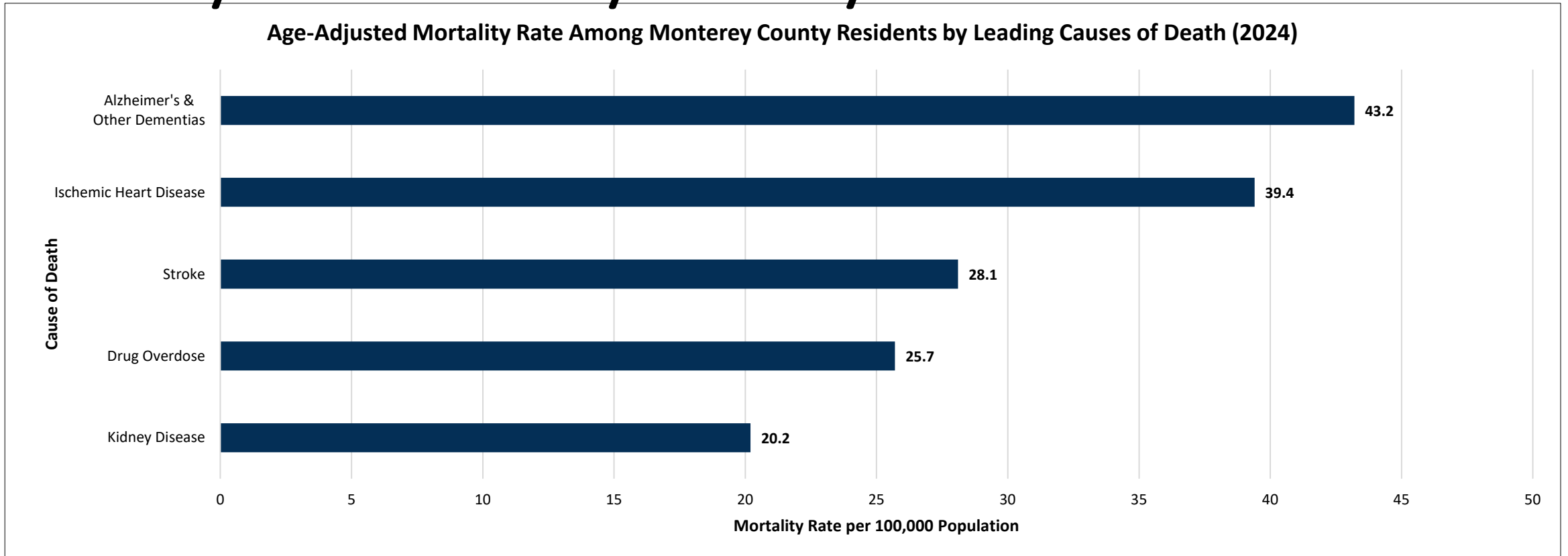
Diabetes By Race/Ethnicity



- **Black and African American residents experience the highest hospitalization rates for several health conditions, including septicemia, heart failure, cardiac dysrhythmias, diabetes, and pneumonia.**
- **Diabetes prevalence has increase since 2021-2022, reaching 15% of adults in 2023-2024.**
 - **Hispanic/Latino adults have the highest diabetes prevalence (16%), followed by Asian adults (15%).**



Mortality in Monterey County



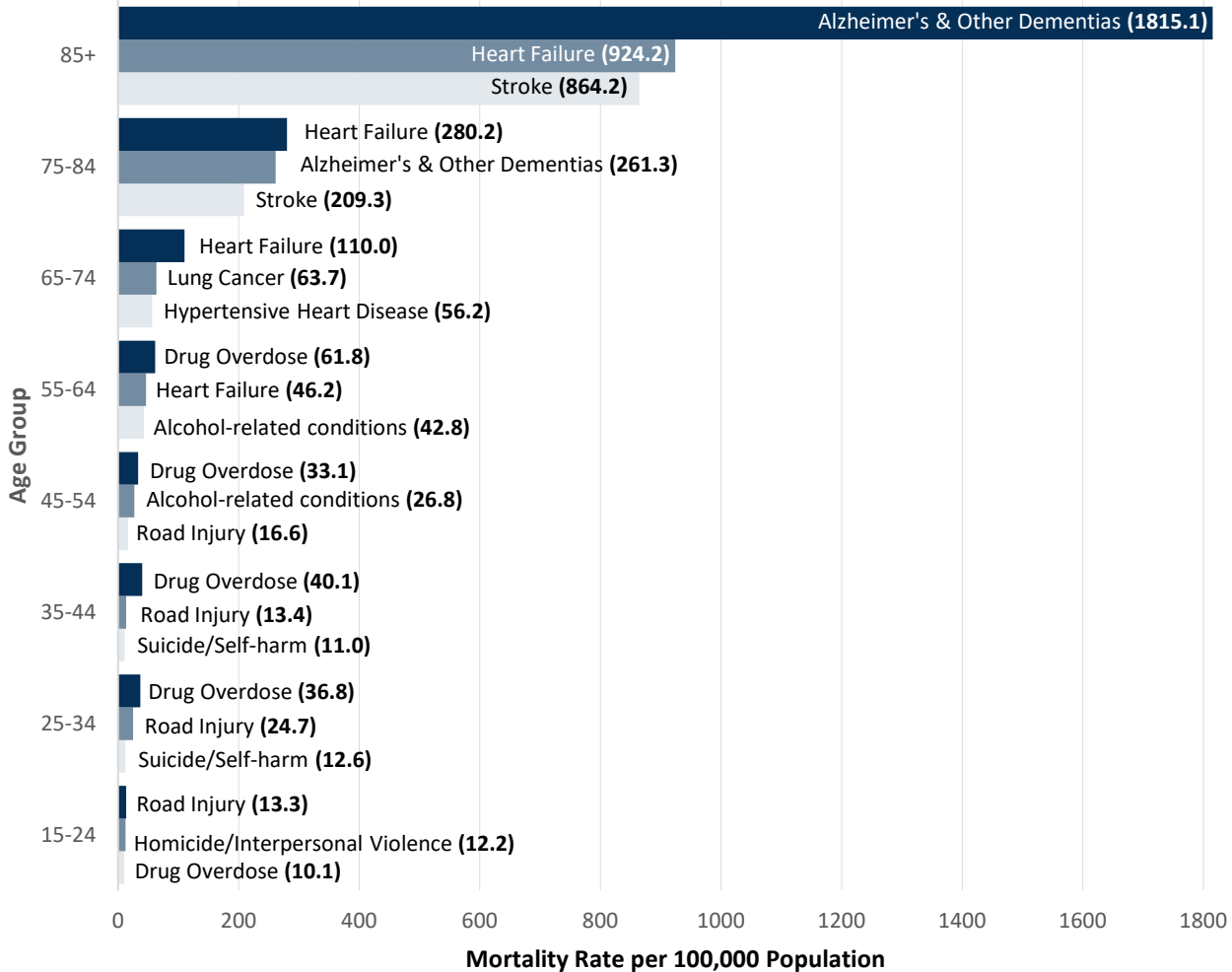
- **Alzheimer's disease and other dementias are the leading cause of death** in Monterey County (43.2 per 100,000).
- **Cardiovascular disease remains a major driver of mortality**, including **ischemic heart disease** (39.4) and **stroke** (28.1).
- **Drug overdose is a significant cause of mortality** (25.7 per 100,000), reflecting impacts of substance use.
- **Kidney disease** remains an important contributor to mortality (20.2. per 100,000).



Mortality in Monterey County

By Age Group

Leading Causes of Death (Mortality Rate) Among Monterey County Residents by Age Group (2022-2024)



By Race & Ethnicity

Leading Causes of Death (Age-Adjusted Mortality Rate) Among Monterey County Residents by Geographic Region (2022-2024)

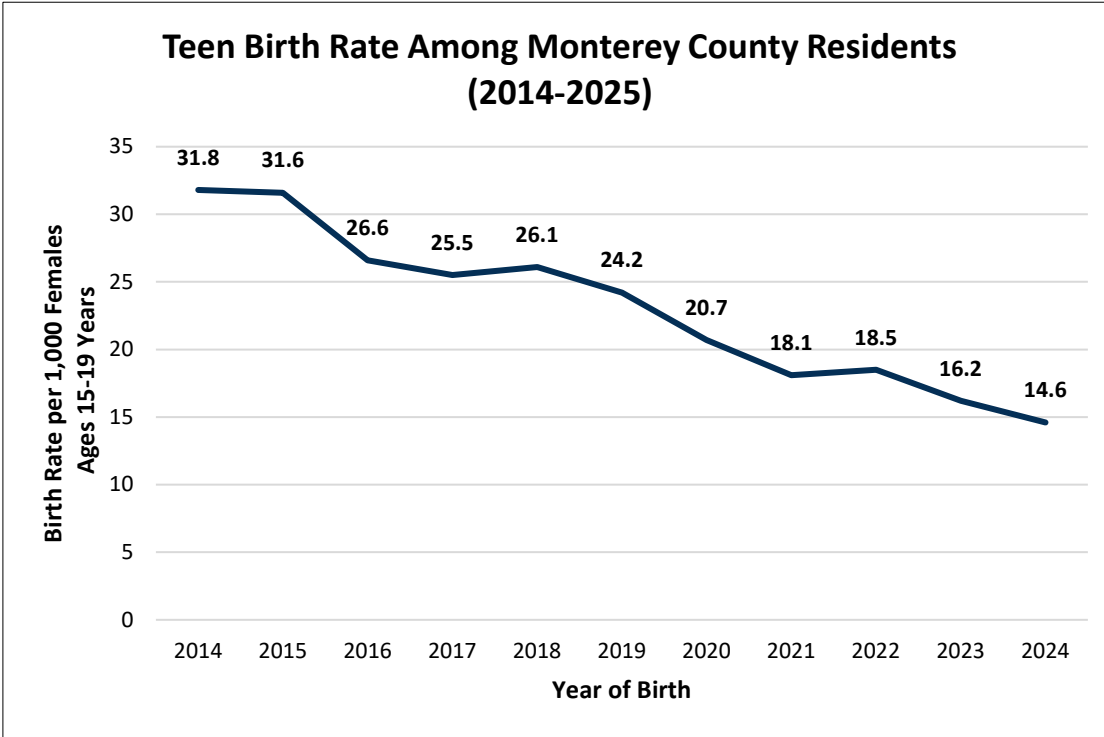
Race/Ethnicity	1	2	3
Asian and Pacific Islander, Not Hispanic or Latino	Alzheimer's & Other Dementias (59.8)	Stroke (54.2)	Heart Failure (49.4)
Black or African-American, Not Hispanic or Latino	Heart Failure (63.6)	Stroke (53.2)	Alzheimer's & Other Dementias (51.3)
Hispanic or Latino, Any Race	Drug Overdose (18.9)	Heart Failure (18.4)	Road Injury (15.1)
Other, American Indian/Alaskan Native, Multiracial; Not Hispanic or Latino	Drug Overdose (38.1)	Heart Failure (20.4)	Kidney Disease (17.2)
White, Not Hispanic or Latino	Alzheimer's & Other Dementias (100.5)	Heart Failure (84.6)	Stroke (57.0)

- Drug overdose is the leading cause of death among adults ages 25-64.
- Drug overdose is the leading cause of death among Hispanic/Latino and American Indian/Alaska Native residents.
- Chronic diseases dominate mortality among adults 65+.
- Alzheimer's disease and other dementias are the leading cause among White and Asian/Pacific Islander residents.

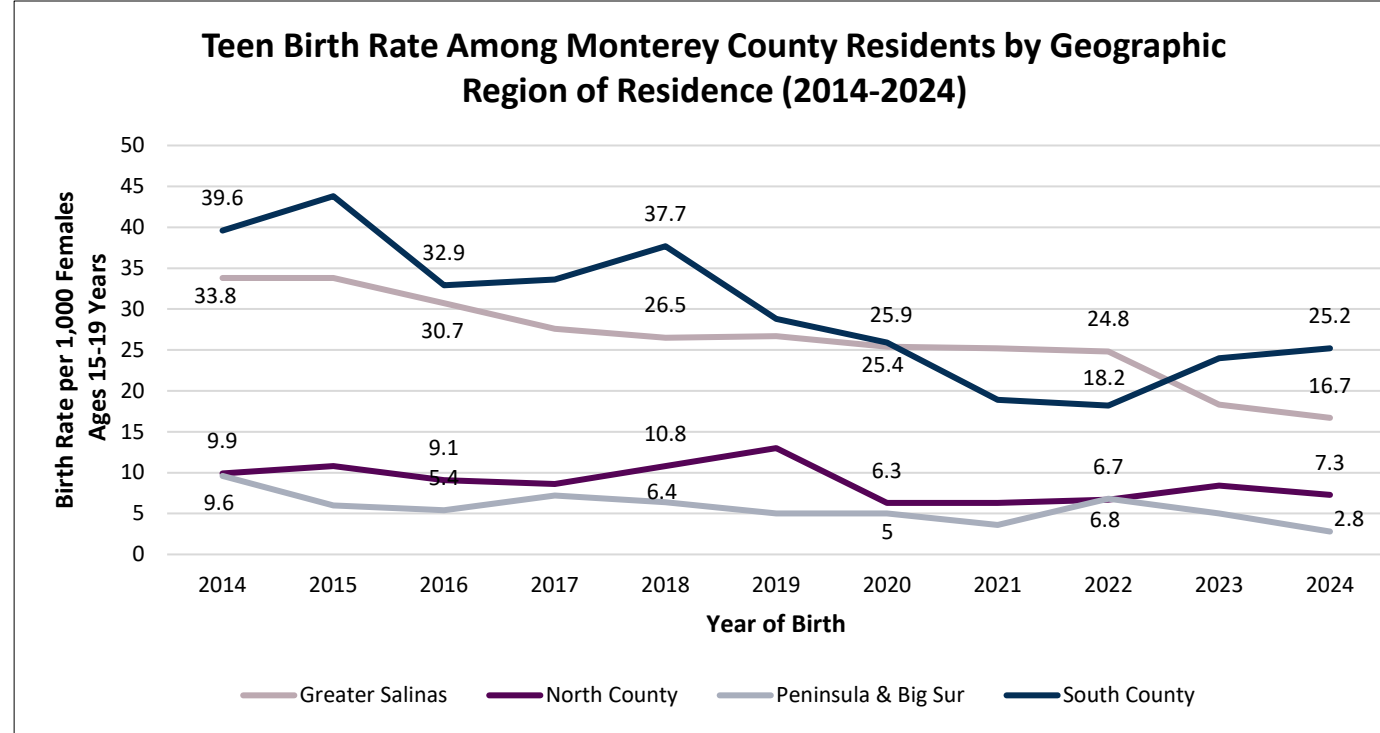


Birth and Perinatal Health in Monterey County

Teen Birth Rate



Teen Birth Rate by Region

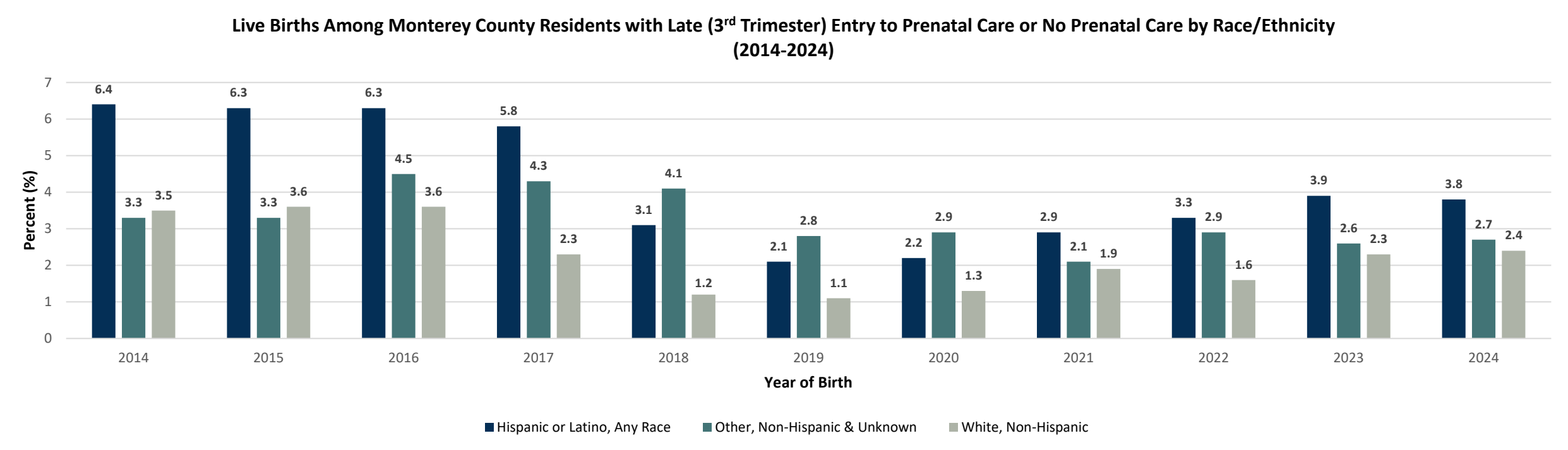


- **Teen birth rates in Monterey County have declined by nearly 50% since 2014.**
- **Despite this decline, local teen birth rates remain higher than the California rate (8.1 per 1,000 females ages 15-19 in 2023).**
- **South County consistently experiences the highest teen birth rates compared to other Monterey County regions.**
- **Peninsula & Big Sur region has the lowest teen birth rate, reaching 2.8 per 1,000 females ages 15-19 in 2024.**



Birth and Perinatal Health in Monterey County (Continued)

Prenatal Care



- Late or no prenatal care has decreased overall since 2014.
- Hispanic or Latino birthing parents consistently had the highest percentage of late or no prenatal care entry across most years.
 - The percentage of Hispanic or Latino birthing parents with late or no prenatal care increased from 2019 to 2023.



Local Data Sources

- **Communicable Disease Dashboard:** <https://www.countyofmonterey.gov/government/departments-a-h/health/data-publications/communicable-disease-dashboard>
- **Birth, Perinatal, and Death Dashboard:** <https://www.countyofmonterey.gov/government/departments-a-h/health/data-publications/birth-perinatal-health-and-death>
- **California Community Burden of Disease Engine:** <https://skylab.cdph.ca.gov/communityBurden/#tab-7765-1>
- **California Department of Public Health Maternal, Child, and Adolescent Health Data Dashboards:** <https://www.cdph.ca.gov/Programs/CFH/DMCAH/surveillance/Pages/default.aspx#backtoTop>
- **DataShare Monterey County:** <https://www.datasharemontereycounty.org/>
- **CDPH Respiratory Dashboard:** <https://www.cdph.ca.gov/Programs/CID/DCDC/Pages/RespiratoryVirusReport.aspx>
- **Wastewater Data (Marina, CA Treatment Plant):**
<https://data.wastewaterscan.org/tracker/?charts=Cj0QACABSABSBjY1N2VhNVVoGTiBHZW5lcgoyMDI2LTAxLTA3cgoyMDI2LTAyLTE4igEGNDlLOWUyqAEBwAEB&selectedChartId=49e9e2>



Future of Public Health Funding



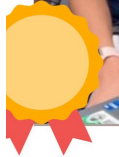
Public Health Laboratory



The lab team performs testing to monitor for and detect health threats to keep the community safe and healthy



Immunization Program



MCHD Immunization program assists all Monterey County residents in attaining optimal health through knowledge of and access to immunizations



Tuberculosis Control Unit



The TB team monitors for suspected and confirmed cases of Tuberculosis in Monterey County. We also conduct DOT (directly observed therapy), PHN care during therapy, and do contact investigations for every patient with active disease.



FoPH Funding Background

- The COVID-19 pandemic exposed significant gaps in the existing public health infrastructure and underscored the need for sustained investment in public health
- Beginning with the 2022 Budget Act, the State allocates annual funding to local health departments to strengthen public health workforce and infrastructure
 - Referred to as “Future of Public Health” funding
 - Purpose: ongoing investments in core public health functions that are cross-cutting and underpin the work of state and local public health departments
 - Funding requirements include that 70% must be used for new personnel (no supplanting)



Health Department FoPH Budget

- Current FY 2025-26 Budget: \$2,532,265
- 75% of FoPH funds are allocated to personnel costs, while the remaining funds support other departmental expenses
 - Health Administration, Environmental Health, and Public Health
- The County of Monterey Health Department allocation has been stable since FY2023-24



Personnel Supported with FoPH Funds

14 positions in FY 2025-26:

- 1 Environmental Health Specialist and 1 Technician to increase environmental health investigational capacity
- 1 Health Program Coordinator and 1 Chronic Disease Prevention Specialist to implement the Healthy Aging Program, which address the growing public health needs of older adults
- 1 Supervising Epidemiologist to provide infection control guidance to schools, healthcare facilities, and businesses
- 1 Chronic Disease Prevention Coordinator to strengthen the Public Health Emergency Preparedness team's response to future disasters and other events
- 1 Office Assistant to support chronic disease & injury prevention programs
- 4 Management Analysts to lead recruitment and quality and service improvement projects, facilitate contracts and purchasing, and support programs through grant development and oversight
- 3 Fiscal staff to expand capacity for expenditure tracking and invoices as well as to maximize revenues



Future of Public Health Funding Accomplishments

Nursing Healthy Families



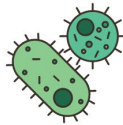
A Nursing Healthy Families Haiku
With strong, humble hearts
Walk beside each family
Trust blooms into care



Communicable Disease Unit



We respond to all California Code of Regulations Title 17. We collect data, collaborate with providers, educate both the public and providers, and ensure proper treatment. We provide aid in all public health emergencies.



Nurse Family Partnership (NFP)



NFP in a Poem
I turns to We
Nurses through compassionate
Relationship leads to
Building room for the house
Of hope and Health
Perspective non-judgement connected
Trust
Are
You and I



Healthy Aging

- Data
 - Evidence shows an increase in aging population at risk for dementia
- Need
 - Identify people at greatest risk that will benefit from upstream prevention, early detection and early intervention
- Objective
 - Create a new public health program to support older adults by promoting healthy aging lifestyles and support brain health
- Opportunity
 - Use FoPH revenue to support a Health Program Coordinator, Chronic Disease Prevention Specialist II and an OA III to create a Healthy Aging Program



Healthy Aging

- Strategies
 - Provide education to seniors, families and caregivers to normalize conversations about brain health
 - Train health professionals to screen older adults at risk of dementia
 - Support caregivers of people with dementia to improve mental health and avoid caregiver burnout
 - Identify additional gaps in access to dementia support



Healthy Aging

- Outcomes

- More older adults will:

- Understand their risk for dementia,
 - Prevent and delay dementia by challenging their minds, exercising regularly, maintaining social connections, eating healthy food, maintaining healthy sleep practices and making regular visits to their doctor,
 - Improve chronic disease management by keeping medical appointments, identifying new medical conditions, avoiding medication errors at home and reducing inappropriate prescribing,
 - Prevent accidents, injuries and emergency department visits, and
 - Avoid scams and financial loss



Contract Management System

- Data
 - Executed agreements, amendments and renewals were taking longer than desired, leading to later start dates for new services and interruption of existing services.
- Need
 - Improve agreement process efficiency.
- Objective
 - Create a business technology system to request and track public health-related contracts with vendors, subcontractors, and grant funding agencies.
- Opportunity
 - Use FoPH revenue to support a Management Analyst II that contributes to development and oversight of a new contract management system



Contract Management System

- System Features
 - Provide managers and supervisors with a standardized request form and centralized online submission process for new agreements, renewals and amendments
 - Create a transparent workflow that allows staff to monitor progress, receive status updates, and anticipate upcoming actions or approvals.
 - Identify which County office or vendor is reviewing the agreement and when they received it
 - Query the amount of time that agreements spend with each reviewer, prompting quality improvement projects to decrease time spent in review



Contract Management System

- Outcomes

- Public Health programs will:

- Decrease the amount of time it takes for a new agreement, renewal or amendment to go from initial request by a manager to final approval by the Department Head,
 - Request fewer retroactive authorizations and approvals by the Board of Supervisors
 - Initiate new services sooner,
 - Avoid disruption of existing services, and
 - Expend greater proportion of grant allocations



Public Health Data Report Enhancements

- Data
 - The public had access to public health reports that were limited to select diseases, based on older data, issued yearly and not interactive.
- Need
 - Create a web-based interactive solution that describes more diseases, shows more recent data, and provides more frequent updates
- Objective
 - Identify epidemiology expertise and tools to create and continually enhance public health dashboards
- Opportunity
 - Use FoPH revenue to support a Supervising Epidemiologist



Public Health Data Report Enhancements

- Strategies
 - Identify a tool to create the interactive dashboard
 - Assemble a team and dedicate time
 - Prioritize public health diseases and conditions
 - Test the product and obtain feedback
 - Publish



Public Health Data Report Enhancements

- Outcomes

- The public and partnering agencies will:

- Interact with a Communicable Disease data dashboard with information on more diseases of interest including pertussis and valley fever
 - Readily obtain cause of death information from an interactive Birth, Death and Perinatal data dashboard
 - See quarterly data updates
 - Review the interactive dashboards in English and Spanish
 - Explore new contextual data which provides a more holistic picture of the state of public health in Monterey County



Enhanced Care Management (ECM)



Think of ECM as a real life Baymax, a buddy that goes beyond health to help individuals thrive, every day.

Thank You

County of Monterey
Health Department
www.mtyhd.org

Women, Infants & Children (WIC)



Our program Grows Healthy Kids, Encourages and Supports Breastfeeding Moms & Babies, Provides Nutrition and Breastfeeding Education, provides healthy foods including fruits and veggies for families to support healthy eating and growth

Nutrition



Recipe for the Nutrition Team
Serves: The community
Ingredients:
3 Registered Dietitians
2 Community Service Aides
Dash of Supervising Public Health Nurse
Instructions:
Mix all ingredients together and bake at 1270 degrees for a well-balanced dish.

