

DEPARTMENT OF
SOCIAL
SERVICES

*Board of Supervisors Budget Workshop
Budget Fiscal Year 2026-27*



COUNTY OF MONTEREY
DEPARTMENT OF SOCIAL SERVICES
Working Together for Our Community

Presented by: Roderick Franks, Director of Social Services
and Becky Cromer, Finance Manager III
April 7, 2026

OVERVIEW

DEPARTMENT OF SOCIAL SERVICES

- Baseline Budget
- Revenue Overview
- Cost Drivers
- Reduction Strategies
- Augmentations
- Military & Veterans Affairs



County of Monterey
DEPARTMENT OF SOCIAL SERVICES

BUDGET FY26/27

FY 2026-27 RECOMMENDED BUDGET OVERVIEW

\$372.5M - 853 POSITIONS

Program Administration: \$199.4 million

- Aging & Adult Services
- Community Benefits
- CalWORKs Employment Services
- Family and Children's Services

Community Programs - \$10.7 million

- Area Agency on Aging – Support non-profit programs for Seniors, 65+
- Community Action Partnership – Homeless, domestic violence, etc.
- IHSS Public Authority – Provides an IHSS Registry for providers who care for IHSS clients
- Military & Veterans Affairs

Entitlements - \$162.4 million

- CalWORKs, General Assistance, IHSS, and Out of Home Care



County of Monterey
DEPARTMENT OF SOCIAL SERVICES

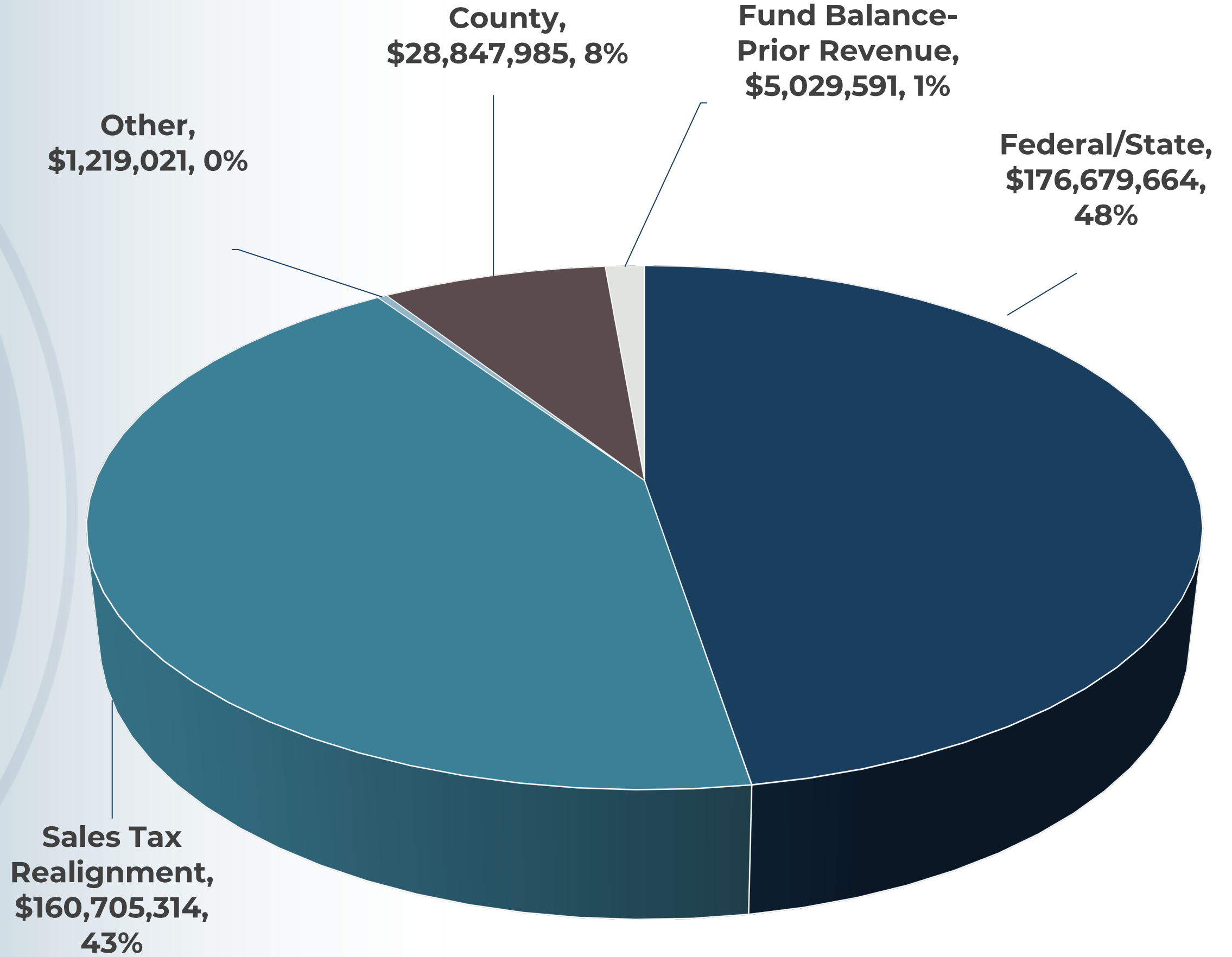


OVERVIEW OF SOCIAL SERVICES REVENUES



County of Monterey
DEPARTMENT OF SOCIAL SERVICES

BUDGET FY26/27



TOTAL \$372.5M

OVERVIEW OF GENERAL FUND CONTRIBUTIONS - \$28.8M

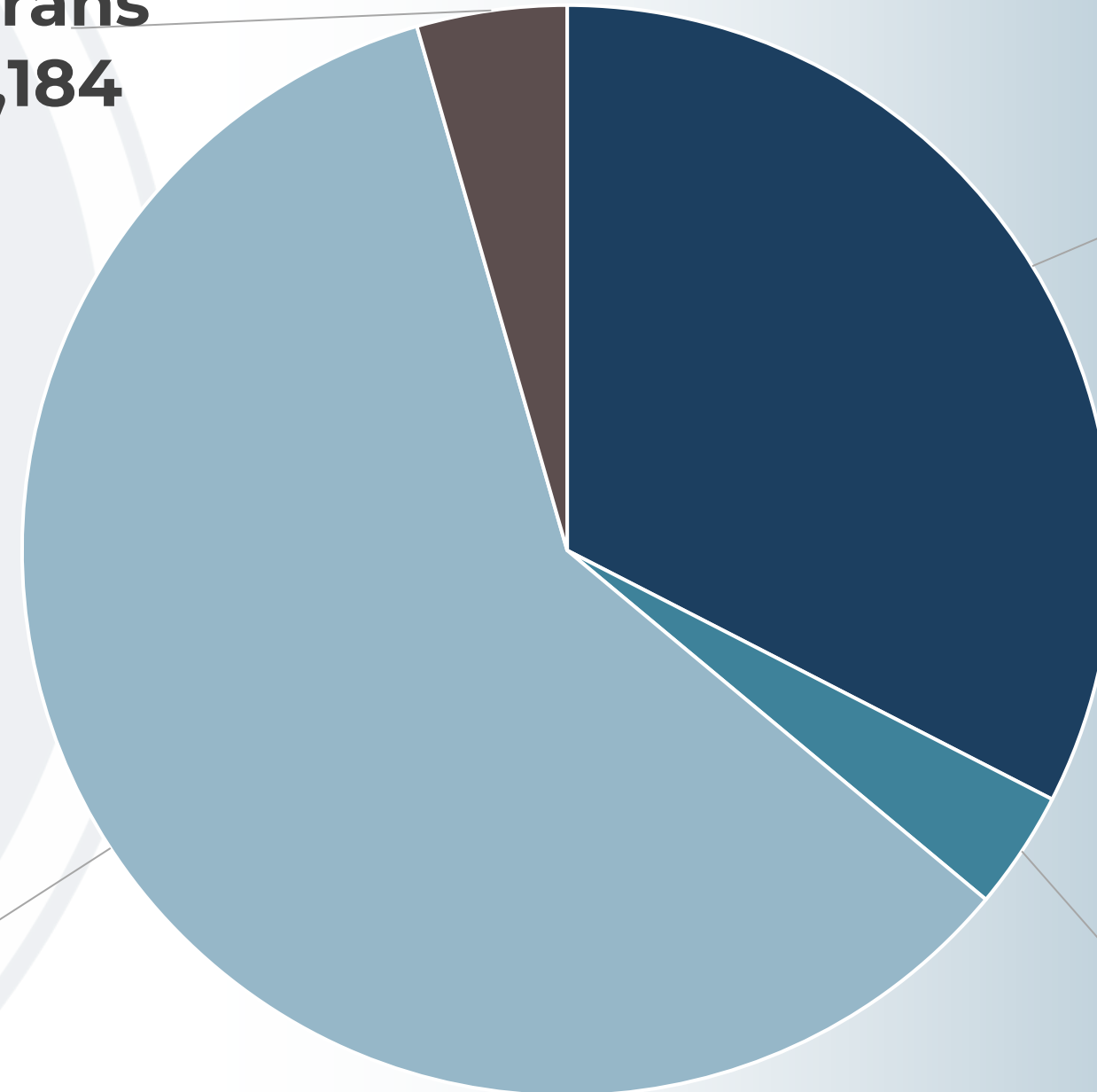
Military & Veterans Affairs, \$1,283,184

Administration, \$9,388,421

Entitlements, \$17,162,345

Community Programs, \$1,014,035

■ Administration ■ Community Programs ■ Entitlements ■ Military & Veterans Affairs



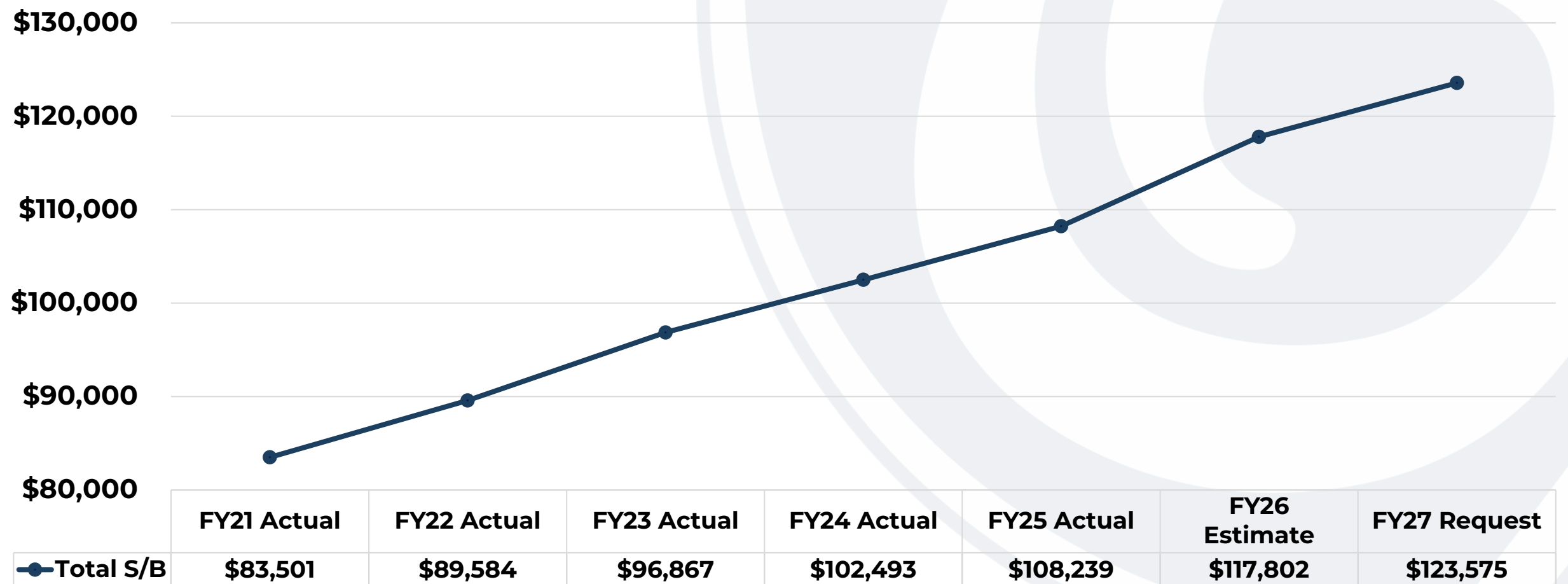


County of Monterey
DEPARTMENT OF SOCIAL SERVICES

BUDGET COST DRIVERS

- General Assistance 12% higher than FY 24/25
- IHSS - \$3.4M wage/benefit costs, MOE 4% increase \$913K
- H.R. 1 impacted CalFresh cost sharing ratios (\$2.1M)
- Out of Home Care – High Placement Costs (\$1.1M)
- Salaries increased \$5.8M (4.9%) compared to FY26 estimate.

Social Services (8262) Salaries and Benefits



REDUCTION STRATEGIES

- 7% Vacancy Savings (\$9.2M)
- 2% LOA Savings (\$2.1M)
- Used One-Time Realignment (\$4.6M)
- Reduce Overtime Usage (\$2.1M)
- Reduce contracts that carry a County share
- Reduced Travel/Training (\$115K)
- General Assistance Program Changes (Budget Committee)
- Maximizing state and federal funding sources



RECOMMENDED AUGMENTATIONS

GFC \$3,697,373

Description	Cost	Revenue	GFC Needed
CalFresh - Impacts from H.R. 1	\$2,140,112	-	\$2,140,112
Out of Home Care	\$1,125,000	-	\$1,125,000
General Assistance	\$432,261	-	\$432,261
Total	\$3,697,373	\$0	\$3,697,373

AUGMENTATIONS REQUESTED



CALFRESH ADMIN

IMPACTS FROM H.R. 1

H.R. 1, often called the “One Big Beautiful Bill Act” notably *impacts Medi-Cal and CalFresh* eligibility administration. The bill introduces new and expanded work requirements, more frequent eligibility redeterminations in Medi-Cal, and other policy changes that largely *will result in lower enrollment* in the programs and have significant *financial impacts on counties administration* of these programs.

Beginning October 2026, **H.R. 1 reduces federal support for administrative costs** from 50 percent to 25 percent. State law requires counties to cover 30 percent of the nonfederal share, meaning that the county share will increase to 22.5 percent and the state share will increase to 52.5 percent.



CALFRESH ADMIN

IMPACTS FROM H.R. 1

Increased State and County Share of CalFresh Administration Costs. Beginning October 2026, H.R. 1 reduces federal support for administrative costs from 50 percent to 25 percent. State law requires counties to cover 30 percent of the nonfederal share, meaning that the county share will increase to 22.5 percent and the state share will increase to 52.5 percent

CalFresh Administration Funding Responsibilities	Current	Beginning October 2026
Federal	50.0%	25.0%
State	35.0	52.5
Counties	15.0	22.5

CalFRESH Impact				21.074%	Modified amt	
Orig 50/35/15=with old State Cap	20,759,372	12,558,912	8,200,460	41,518,743		
One Quarter at old methodology	5,189,843	3,632,890	1,556,953	10,379,686	One Quarter	
3 Qtrs at New 25/52.5/22.5. with new State Cap	7,784,764	14,082,078	9,272,215	31,139,057	3 Quarters	
	12,974,607	17,714,968	10,829,168	41,518,743	Total	
Impact of Federal Change to SNAP Sharing ratios				2,628,708.3	before adjustment	

CalFRESH Impact				17.726%	Modified amt	
Orig 50/35/15=with old State Cap	19,456,448	12,558,912	6,897,536	38,912,895		
One Quarter at old methodology	4,864,112	3,404,878	1,459,234	9,728,224	One Quarter	
3 Qtrs at New 25/52.5/22.5. with new State Cap	7,296,168	14,310,090	7,578,414	29,184,671	3 Quarters	
	12,160,280	17,714,968	9,037,647	38,912,895	Total	
Impact of Federal Change to SNAP Sharing ratios				2,140,111.8	after move of 7 workers	

CALFRESH ADMIN

IMPACTS FROM H.R. 1

Federal	25.0%	2,377,902.2
State	52.5%	4,993,594.7
County	22.5%	2,140,112.0
Total	100%	9,511,608.9

58 Eligibility Specialist II
8 Eligibility Supervisors
66 Total positions



OUT OF HOME CARE: SPECIALIZED PLACEMENTS

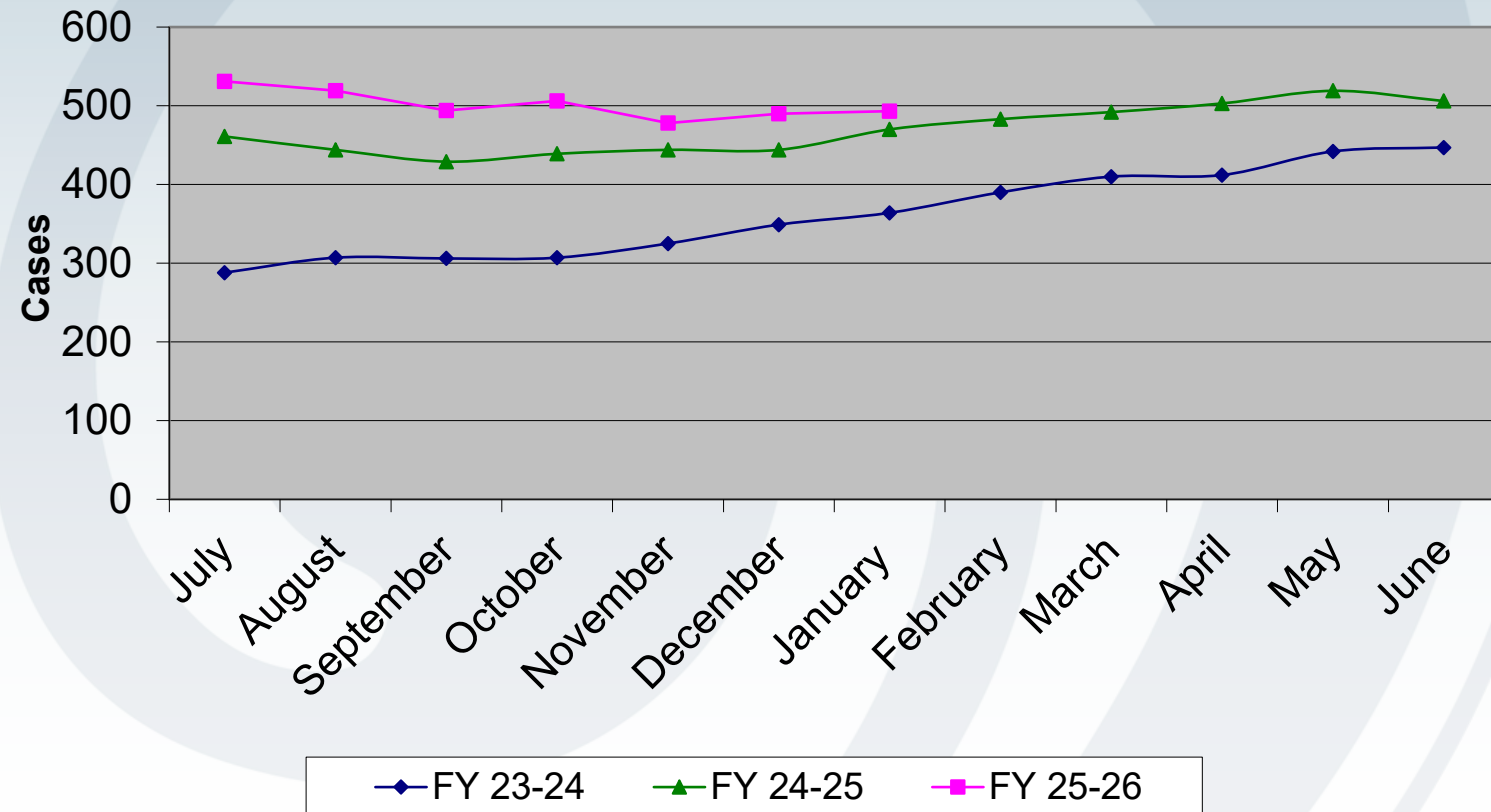
- The Department has been experiencing a ***higher rate*** of children coming into care with ***acute needs*** . Unsafe behaviors such as physical aggression, running away, destruction of property, and ongoing hospitalizations are some examples of the trauma responses that have ***resulted in higher placement costs to support their needs*** .
- Out of Home care placements are ***court ordered (mandated)*** and DSS is legally required to provide safe placement.
- Specialized placements include Short Term Residential Therapeutic Placement (STRTP), San Andreas Regional Center Placements, Small Family Homes, or Foster Family Agencies.
- In addition, Monterey County has a ***significant shortage of resource parents*** who are willing to care for teens with complex care needs, despite recruitment efforts. This means that ***once youth are placed, they may remain in these high -cost homes for long periods of time*** because there are no other homes to transition them into.



GENERAL ASSISTANCE (GA) PROGRAM

- The General Assistance (GA) Program is designed to provide relief and support to indigent adults who are not supported by their own means, other public funds, or assistance programs.
- The GA *caseload average continues to increase*. Caseload average is approximately 12% higher than FY 24-25 and 56% higher from FY 23-24. *GA caseload is expected to continue to grow*.
- Strategies to control costs could include modifications to the rules which allow some participants to be exempt from the participation time limits.

General Assistance Caseload



PENDING AUGMENTATIONS

GFC \$168,806

Description	Cost	Revenue	GFC Needed
IHSS Social Worker III (Restore Position)	\$168,806	\$84,403	\$84,403
IHSS Social Worker III (Restore Position)	\$168,806	\$84,403	\$84,403
Total	\$337,612	\$168,806	\$168,806

AUGMENTATIONS REQUESTED



IN HOME SUPPORTIVE SERVICES PROGRAM (IHSS)

IHSS SOCIAL WORKERS AND CFCO PENALTIES



- The IHSS program supports individuals with disabilities and adults age 65 or older to stay safely in their homes rather than be institutionalized. The program has been **severely impacted by caseload growth** that has outpaced current funding streams. As of Jan 2026, there are approximately 7,500 IHSS cases, and only 26 IHSS SWs to manage the caseload, which **averages 287 service recipients per IHSS SW**. There are approximately 5,790 IHSS providers.
- The workload has been compounded by the State's implementation of **financial penalties** effective July 2025 for **Community First Choice Option (CFCO) cases** that receive enhanced Federal Medical Assistance Percentage (FMAP) funding because IHSS recipients of this program require a higher level of care and specific reassessment guidelines.



County of Monterey
DEPARTMENT OF SOCIAL SERVICES

QUESTIONS?



THANK YOU



<http://countyofmonterey.gov/dss>