



# State and Federal Budget and Policy Impacts to County of Monterey Services

Roderick Franks, Director of Social Services  
Elsa Mendoza Jimenez, Director of Health Services  
Dr. Chad Harris, CEO, Natividad

Board of Supervisor Meeting  
September 30, 2025



COUNTY OF MONTEREY  
DEPARTMENT OF SOCIAL SERVICES  
*Working Together for Our Community*



COUNTY OF MONTEREY  
HEALTH DEPARTMENT  
*Nationally Accredited for Providing Quality Health Services*

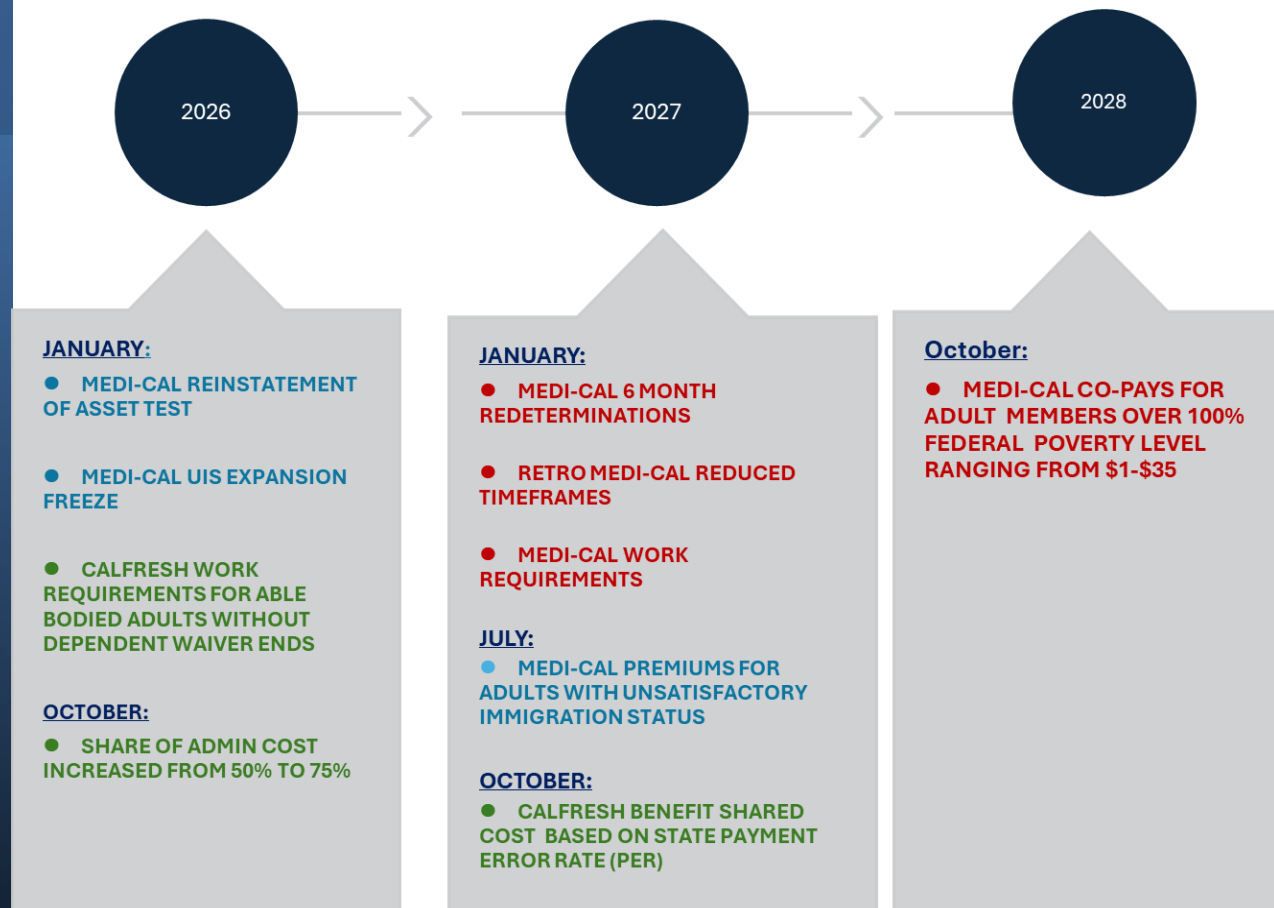


  
**Natividad**<sup>®</sup>  
*Inspiring healthy lives*

# Medi-Cal and CalFresh Current Beneficiaries & Timeline of Changes

Total MC Cases: 84,496  
Total Members: 173,405  
Total Benefits Issued Monthly: \$51,035,584 (Aug)

Total CF Cases: 28,028  
Total Members: 51,826  
Total Benefits Issued Monthly: \$9,453,409 (Aug)



# Department of Social Services Anticipated Impacts to the Medi-Cal Program due to H. R. 1

- Reinstatement of Medi-Cal Asset Limit for households 65 years of age or older, disabled, living in a nursing home or over income for MAGI Medi-Cal: **13,226 recipients in Monterey County**
- Medi-Cal eligibility redeterminations every 6 months, rather than annually, for the Medi-Cal Expansion population, may potentially impact : **61,620 recipients in Monterey County**
- Medi-Cal expansion individuals earning between 101%-138% of the Federal Poverty Level (FPL) will be subject to a co-pay up to \$35 (behavioral health services exempt from requiring the co-pay).
- Medi-Cal mandatory work requirements for non-disabled, non-elderly adults ages 19-64. Recipients must verify 80 hours per month of employment, volunteer work, education program or job training, may potentially impact: **34,954 recipients in Monterey County**
- Limit retroactive Medi-Cal coverage from three months before the application date to one month before the application date, may potentially impact: **7,790 applicants yearly in Monterey County**
- Recipients with an unsatisfactory Immigration Status in Monterey County who may potentially lose Medi-Cal benefits if Medi-Cal is not renewed: **38,912 recipients in Monterey County**



COUNTY OF MONTEREY  
DEPARTMENT OF SOCIAL SERVICES  
*Working Together for Our Community*

Department of  
Social Services  
Anticipated  
Impacts to the  
CalFresh Program  
Affecting  
Nutrition for  
County Residents  
Due to H. R. 1

- Recipients of CalFresh in Monterey County that will now be identified as Able-Bodied Adults Without Dependents (ABAWDs) will have to provide employment verifications to receive CalFresh or may lose eligibility due to no exemption: **8,724 recipients in Monterey County**
  - Individuals up to age 64 (up from 54 years of age currently): **8,724 recipients in Monterey County**
  - Individuals with children ages 14 and up
  - Homeless Community who will no longer be able to be eligible due to this exemption alone: **1496 recipients**



# Health Department Anticipated Impacts resulting from the CA State Budget Act and H. R. 1

## Key FY 2025-26 CA Budget Act Policy Change:

- Changes to Unsatisfactory Immigration Status (UIS)
  - Effective July 1, 2025, visit will be reimbursed **Fee For Service amount only**
  - 23% of Clinic Services' patients have UIS status

## Membership Estimates based on H. R. 1 Changes:

- Membership estimate reductions for UIS and SIS (Satisfactory Immigration Status) Managed Medi-Cal members
  - Calendar Year 2025 (2.3%)
  - Calendar Year 2026 (3.9%)
  - Calendar Year 2027 (8.7%)
  - Calendar Year 2028 (7.0%)



COUNTY OF MONTEREY  
**HEALTH DEPARTMENT**  
Nationally Accredited for Providing Quality Health Services



Other Health  
Department  
Anticipated  
Impacts  
resulting from  
H. R. 1

## Impacts to Public Health Programming:

- Elimination of **CalFresh Healthy Living** Program
  - School based wellness education and policy development
  - Community outreach and nutrition programs
  - Promotion of Parks Prescriptions program
  - Education at Farmer's Markets
- Elimination of **Teen Pregnancy Prevention** Programming:
  - Comprehensive school based sexual/reproductive health education including prevention of teen births and transmission of sexually transmitted infections
  - Youth development and mentoring opportunities
  - Services to high-risk youth (unhoused, foster, justice involved, LGBTQ+, low income)



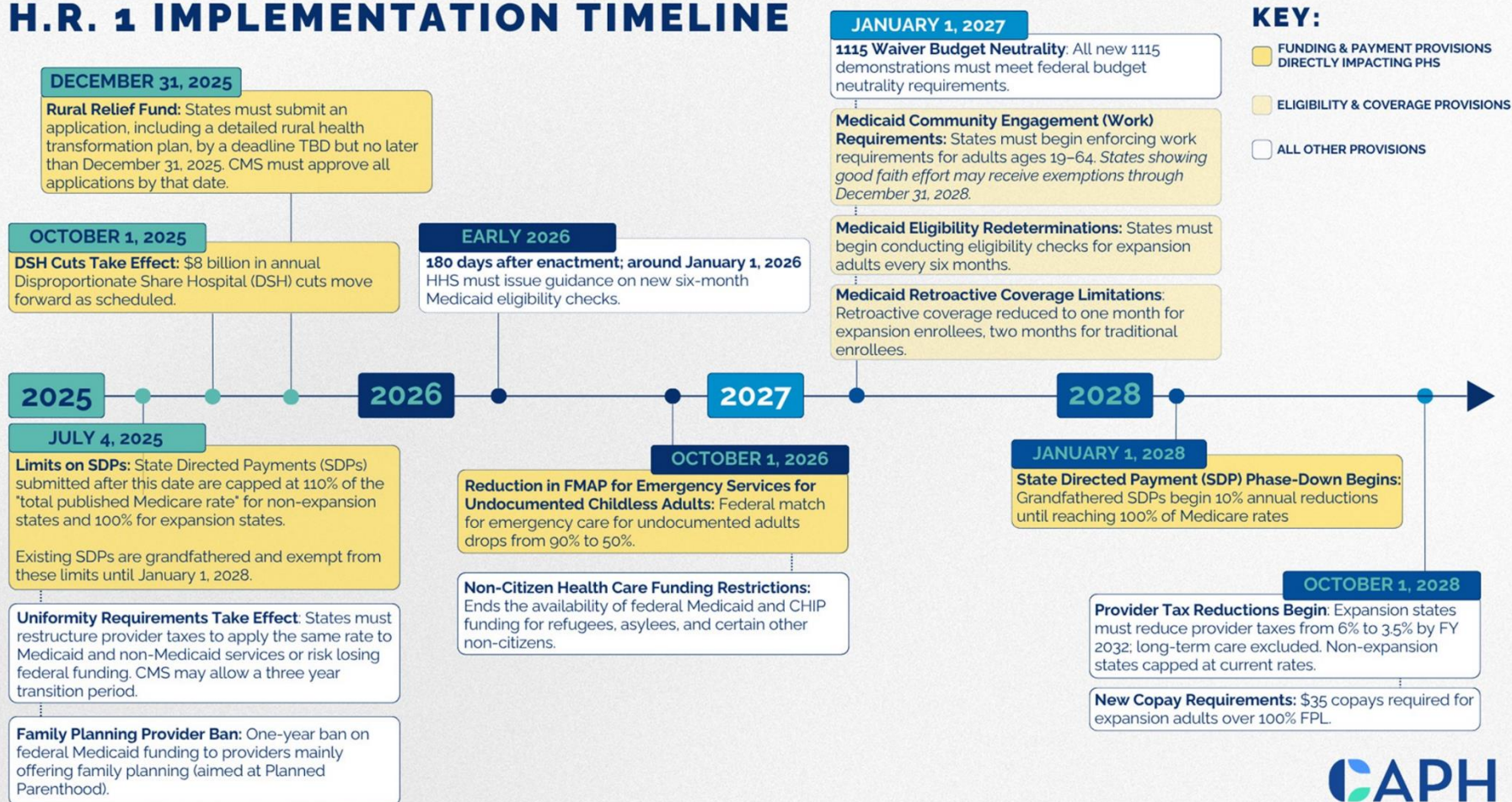
COUNTY OF MONTEREY  
**HEALTH DEPARTMENT**  
Nationally Accredited for Providing Quality Health Services





# H.R. 1 Impacts- Natividad

## H.R. 1 IMPLEMENTATION TIMELINE



# CALIFORNIA'S PUBLIC HEALTH CARE SYSTEMS:

## 17 Systems, 44 Hospitals & 150+ Clinics

### Alameda Health System

- Alameda Hospital
- Fairmont Rehabilitation and Wellness
- John George Psychiatric Hospital
- Park Bridge Rehabilitation and Wellness
- San Leandro Hospital
- South Shore Rehabilitation and Wellness
- Wilma Chan Highland Hospital

### Arrowhead Regional Medical Center

### Contra Costa Health Services

- Contra Costa Regional Medical Center

### Kern Medical Hospital

### LA County Department of Health Services

- Harbor/UCLA Medical Center
- Los Angeles General Medical Center
- Olive View/UCLA Medical Center
- Rancho Los Amigos National Rehabilitation Center

### Natividad Medical Center

### Riverside University Health System

### San Francisco Department of Public Health

- Zuckerberg San Francisco General
- Laguna Honda Hospital and Rehabilitation Center

### San Joaquin General Hospital

### San Mateo Medical Center

### County of Santa Clara Health System

- O'Connor Hospital
- Santa Clara Valley Medical Center
- St. Louise Regional Hospital
- Regional Medical Center

### Ventura County Health Care Agency

- Santa Paula Hospital
- Ventura County Medical Center

### UC Health

#### UC Davis Health

- UC Davis Sacramento Medical Center

#### UC Irvine Health

- UC Irvine Health, Orange
- UC Irvine Health, Fountain Valley
- UC Irvine Health, Lakewood
- UC Irvine Health, Los Alamitos
- UC Irvine Health, Placentia Linda

#### UC San Diego Health

- UC San Diego East Campus Medical Center
- UC San Diego Health, Hillcrest Medical Center
- UC San Diego Health, Jacobs Medical Center

#### UC San Francisco Health

- UCSF Helen Diller Medical Center at Parnassus Heights
- UCSF Health Saint Francis Hospital
- USCF Health Saint Mary's Hospital
- UCSF Mission Bay Medical Center
- UCSD Mount Zion Medical Center

#### UCLA Health

- Ronald Reagan UCLA Medical Center
- UCLA Santa Monica Medical Center
- UCLA Resnick Neuropsychiatric Hospital
- UCLA West Valley Medical Center





***THANK YOU!***

**Questions and Answers**