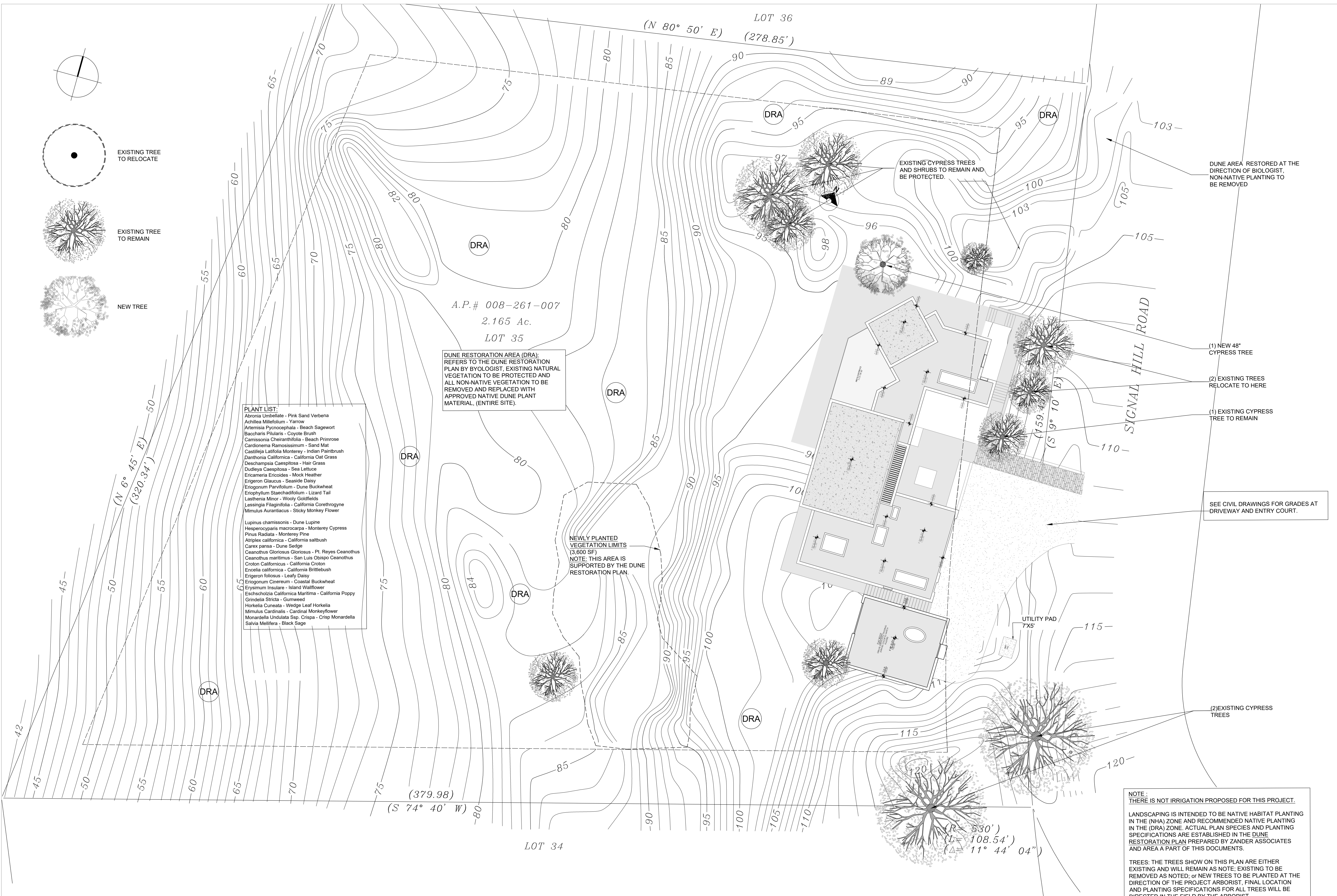
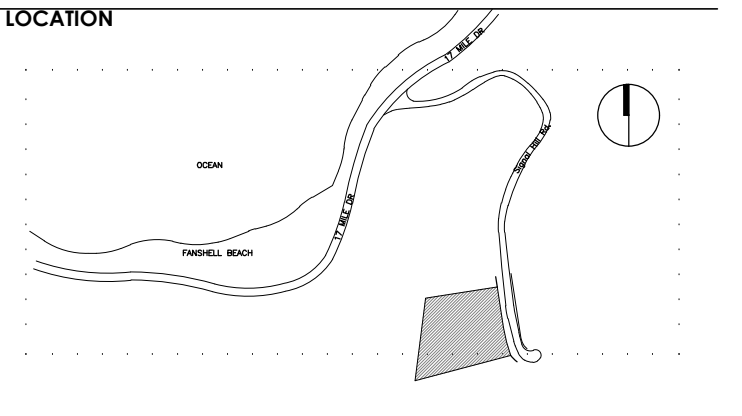


- GRADES.**
- DIMENSION IN FEET.
 - LEVELS IN FEET.
 - NO DIMENSIONS WILL BE TAKEN TO THE SCALE OF THIS PLAN.
 - THE DIMENSIONS ARE TO FINISHING CLOTHES.
 - THE DATES AND SUBSEQUENT REVISIONS OF EACH MUST BE CONSULTED.
 - THIS DRAWING MUST BE VERIFIED WITH THE CORRESPONDING INSTALLATIONS AND STRUCTURAL. ANY DISCREPANCIES SHOULD CONSULT WITH THE CONSTRUCTION MANAGEMENT.
 - THE CONTRACTOR WILL VERIFY AT THE SITE OF THE WORK, BEFORE EXECUTING, THE DIMENSIONS AND LEVELS INDICATED IN THIS DRAWING, MUST BE SUBJECT TO THE DIRECTION OF THE PROJECT ARBORIST. FINAL LOCATION AND PLANTING SPECIFICATIONS FOR ALL TREES WILL BE DIRECTED IN THE FIELD BY THE ARBORIST.
 - THIS DRAWING RELIES ON ANY DRAWING PRIOR TO THIS DATE.
 - ALL FINISHES INDICATED IN THIS DRAWING MUST BE EXECUTED IN ACCORDANCE TO THE CORRESPONDING SPECIFICATIONS.
 - THIS DRAW SHOULD BE READ ALONG WITH THE SPECIFICATIONS CORRESPONDING TO EACH SPECIALTY.

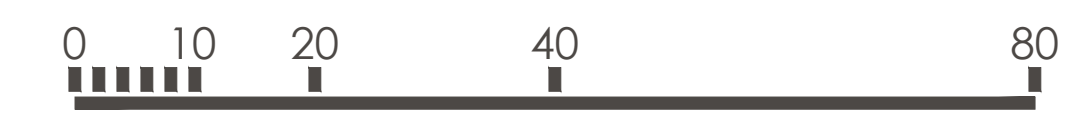
- GENERAL/ CONSTRUCTION**
- 01 DRAWING NUMBER ON SHEET
 - 02 SHEET NUMBER
 - 03 WALL LINE
 - 04 HATCH
 - 05 WINDOW LINE
 - 06 HATCHING REVERSE CHANGE
 - 07 COLUMN ONE NUMBER
 - 08 ROOM NAME
 - 09 ROOM NUMBER
 - 10 ADD DOOR & DOOR NUMBER
 - 11 SHEET NUMBER
 - 12 DRAWING NUMBER ON SHEET
 - 13 SHEET NUMBER
 - 14 SHEET NUMBER
 - 15 SHEET NUMBER
 - 16 SHEET NUMBER
 - 17 SHEET NUMBER
 - 18 SHEET NUMBER
 - 19 SHEET NUMBER
 - 20 VIEW TITLE
 - 21 LANDING HEIGHT CHANGE - ARCH. ELEV.
 - 22 SLAB DIRECTION (DUAL)
 - 23 DRAWING NUMBER ON SHEET
 - 24 SHEET NUMBER
- PLAN KEY NOTES**

REVISIONS

NO.	DESCRIPTION	DATE



LANDSCAPE PLAN SCALE. 1/16"=1'-0"

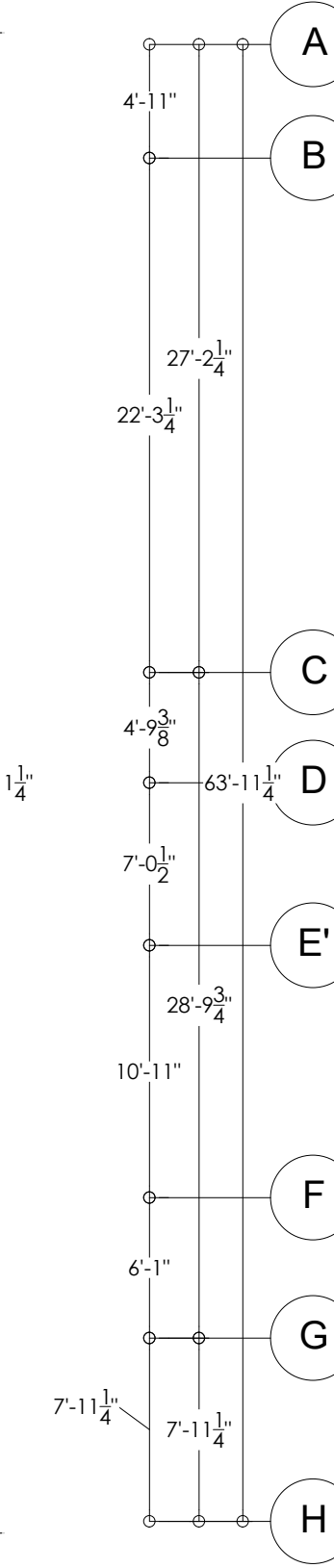
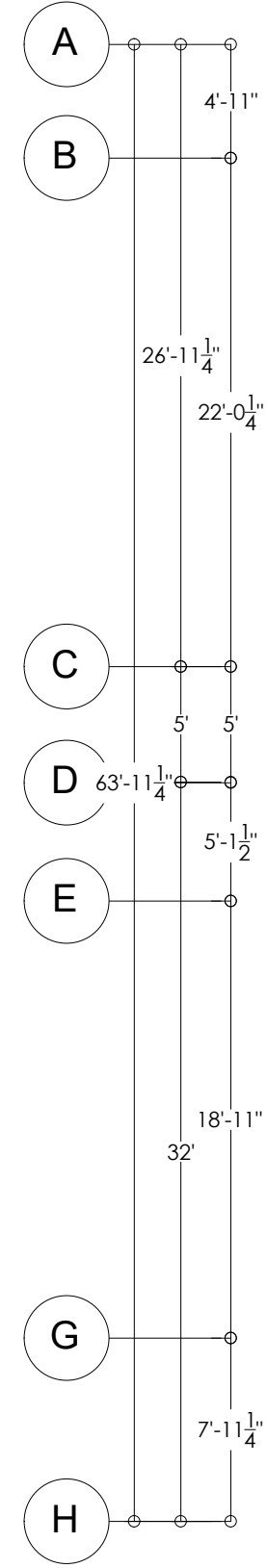
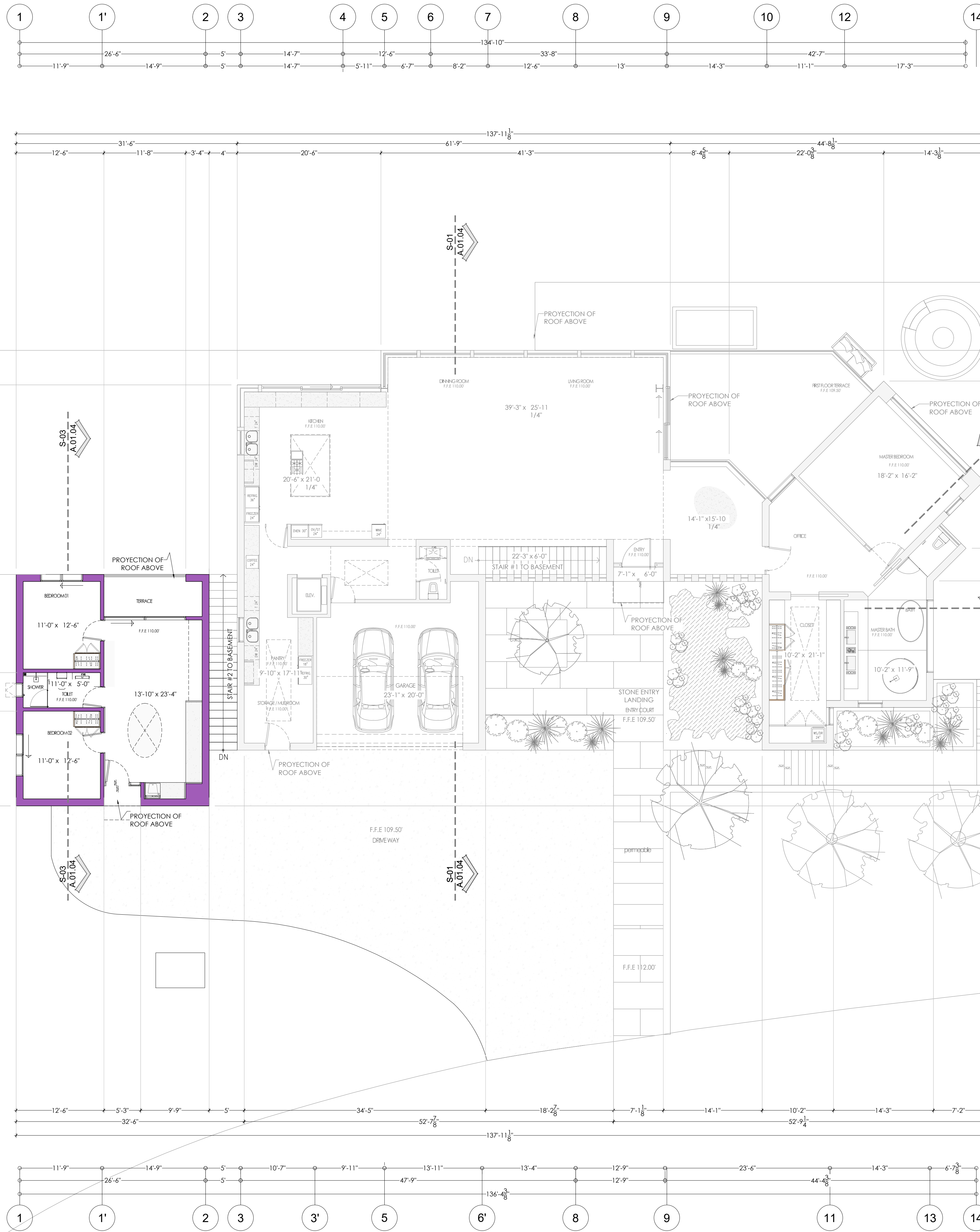
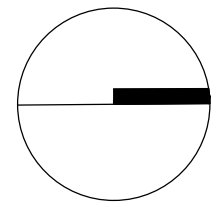


MASSY HOUSE
LOT No. 35
1170 SIGNAL HILL DRIVE
PEBBLE BEACH, CA 93953

LANDSCAPE PLAN

SCALE | **DATE**

1/16"=1'-0" | 10/17/25



- GRADES.**
- DIMENSION IN FEET.
 - LEVELS IN FEET.
 - NO DIMENSIONS WILL BE TAKEN TO THE SCALE OF THIS PLAN.
 - THE DIMENSIONS ARE TO FINISHING CLOTHES.
 - THE DATES AND SUBSEQUENT REVISIONS OF EACH MUST BE CONSULTED.
 - THIS DRAWING MUST BE VERIFIED WITH THE CORRESPONDING INSTALLATIONS AND STRUCTURAL. ANY DISCREPANCIES SHOULD CONSULT WITH THE CONSTRUCTION MANAGEMENT.
 - THE CONTRACTOR SHALL VERIFY AT THE SITE OF THE WORK, BEFORE EXECUTING THE DIMENSIONS AND LEVELS INDICATED IN THIS DRAWING, MUST SUBJECT TO THE DIRECTION OF THE WORK ANY DIFFERENCE THERE MAY BE, AS WELL AS THE INTERPRETATION OF THIS DRAWING BY THE CONTRACTOR HIMSELF.
 - THIS DRAWING nullifies ANY DRAWING PRIOR TO THIS DATE.
 - ALL FINISHES INDICATED IN THIS DRAWING MUST BE EXECUTED IN ACCORDANCE.
 - THIS DRAW SHOULD BE READ ALONG WITH THE SPECIFICATIONS CORRESPONDING TO EACH SPECIALTY.

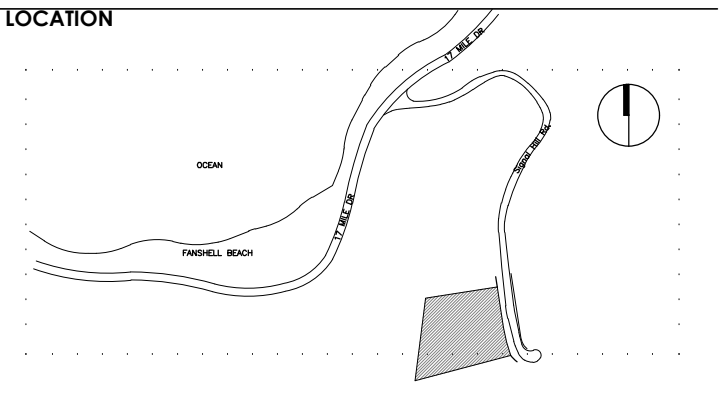
GENERAL CONSTRUCTION

- 01 DWYER NUMBER ON SHEET
- 02 SHEET NUMBER
- 03 WINDOW
- 04 WINDOW TYPING
- 05 BLACKLINE REVISION CHANGE
- 06 COLUMN ONE NUMBER
- 07 ROOM NAME
- 08 ROOM NUMBER
- 09 ADD DOOR & DOOR NUMBER
- 10 DETAIL SECTION
- 11 DWYER NUMBER ON SHEET
- 12 DWYER NUMBER ON SHEET
- 13 DWYER NUMBER ON SHEET
- 14 DWYER NUMBER ON SHEET
- 15 DWYER NUMBER ON SHEET
- 16 DWYER NUMBER ON SHEET
- 17 DWYER NUMBER ON SHEET
- 18 DWYER NUMBER ON SHEET
- 19 DWYER NUMBER ON SHEET
- 20 DWYER NUMBER ON SHEET
- 21 DWYER NUMBER ON SHEET
- 22 DWYER NUMBER ON SHEET
- 23 DWYER NUMBER ON SHEET
- 24 DWYER NUMBER ON SHEET
- 25 DWYER NUMBER ON SHEET
- 26 DWYER NUMBER ON SHEET
- 27 DWYER NUMBER ON SHEET
- 28 DWYER NUMBER ON SHEET
- 29 DWYER NUMBER ON SHEET
- 30 DWYER NUMBER ON SHEET
- 31 DWYER NUMBER ON SHEET
- 32 DWYER NUMBER ON SHEET
- 33 DWYER NUMBER ON SHEET
- 34 DWYER NUMBER ON SHEET
- 35 DWYER NUMBER ON SHEET
- 36 DWYER NUMBER ON SHEET
- 37 DWYER NUMBER ON SHEET
- 38 DWYER NUMBER ON SHEET
- 39 DWYER NUMBER ON SHEET
- 40 DWYER NUMBER ON SHEET
- 41 DWYER NUMBER ON SHEET
- 42 DWYER NUMBER ON SHEET
- 43 DWYER NUMBER ON SHEET
- 44 DWYER NUMBER ON SHEET
- 45 DWYER NUMBER ON SHEET
- 46 DWYER NUMBER ON SHEET
- 47 DWYER NUMBER ON SHEET
- 48 DWYER NUMBER ON SHEET
- 49 DWYER NUMBER ON SHEET
- 50 DWYER NUMBER ON SHEET
- 51 DWYER NUMBER ON SHEET
- 52 DWYER NUMBER ON SHEET
- 53 DWYER NUMBER ON SHEET
- 54 DWYER NUMBER ON SHEET
- 55 DWYER NUMBER ON SHEET
- 56 DWYER NUMBER ON SHEET
- 57 DWYER NUMBER ON SHEET
- 58 DWYER NUMBER ON SHEET
- 59 DWYER NUMBER ON SHEET
- 60 DWYER NUMBER ON SHEET
- 61 DWYER NUMBER ON SHEET
- 62 DWYER NUMBER ON SHEET
- 63 DWYER NUMBER ON SHEET
- 64 DWYER NUMBER ON SHEET
- 65 DWYER NUMBER ON SHEET
- 66 DWYER NUMBER ON SHEET
- 67 DWYER NUMBER ON SHEET
- 68 DWYER NUMBER ON SHEET
- 69 DWYER NUMBER ON SHEET
- 70 DWYER NUMBER ON SHEET
- 71 DWYER NUMBER ON SHEET
- 72 DWYER NUMBER ON SHEET
- 73 DWYER NUMBER ON SHEET
- 74 DWYER NUMBER ON SHEET
- 75 DWYER NUMBER ON SHEET
- 76 DWYER NUMBER ON SHEET
- 77 DWYER NUMBER ON SHEET
- 78 DWYER NUMBER ON SHEET
- 79 DWYER NUMBER ON SHEET
- 80 DWYER NUMBER ON SHEET
- 81 DWYER NUMBER ON SHEET
- 82 DWYER NUMBER ON SHEET
- 83 DWYER NUMBER ON SHEET
- 84 DWYER NUMBER ON SHEET
- 85 DWYER NUMBER ON SHEET
- 86 DWYER NUMBER ON SHEET
- 87 DWYER NUMBER ON SHEET
- 88 DWYER NUMBER ON SHEET
- 89 DWYER NUMBER ON SHEET
- 90 DWYER NUMBER ON SHEET
- 91 DWYER NUMBER ON SHEET
- 92 DWYER NUMBER ON SHEET
- 93 DWYER NUMBER ON SHEET
- 94 DWYER NUMBER ON SHEET
- 95 DWYER NUMBER ON SHEET
- 96 DWYER NUMBER ON SHEET
- 97 DWYER NUMBER ON SHEET
- 98 DWYER NUMBER ON SHEET
- 99 DWYER NUMBER ON SHEET
- 100 DWYER NUMBER ON SHEET

PLAN KEY NOTES

- 00 XXXXXX SCALE 1/8" = 1'-0"
- 01 INTERIOR FINISHES
- 02 INTERIOR FINISHES
- 03 INTERIOR FINISHES
- 04 INTERIOR FINISHES
- 05 INTERIOR FINISHES
- 06 INTERIOR FINISHES
- 07 INTERIOR FINISHES
- 08 INTERIOR FINISHES
- 09 INTERIOR FINISHES
- 10 INTERIOR FINISHES
- 11 INTERIOR FINISHES
- 12 INTERIOR FINISHES
- 13 INTERIOR FINISHES
- 14 INTERIOR FINISHES
- 15 INTERIOR FINISHES
- 16 INTERIOR FINISHES
- 17 INTERIOR FINISHES
- 18 INTERIOR FINISHES
- 19 INTERIOR FINISHES
- 20 INTERIOR FINISHES
- 21 INTERIOR FINISHES
- 22 INTERIOR FINISHES
- 23 INTERIOR FINISHES
- 24 INTERIOR FINISHES
- 25 INTERIOR FINISHES
- 26 INTERIOR FINISHES
- 27 INTERIOR FINISHES
- 28 INTERIOR FINISHES
- 29 INTERIOR FINISHES
- 30 INTERIOR FINISHES
- 31 INTERIOR FINISHES
- 32 INTERIOR FINISHES
- 33 INTERIOR FINISHES
- 34 INTERIOR FINISHES
- 35 INTERIOR FINISHES
- 36 INTERIOR FINISHES
- 37 INTERIOR FINISHES
- 38 INTERIOR FINISHES
- 39 INTERIOR FINISHES
- 40 INTERIOR FINISHES
- 41 INTERIOR FINISHES
- 42 INTERIOR FINISHES
- 43 INTERIOR FINISHES
- 44 INTERIOR FINISHES
- 45 INTERIOR FINISHES
- 46 INTERIOR FINISHES
- 47 INTERIOR FINISHES
- 48 INTERIOR FINISHES
- 49 INTERIOR FINISHES
- 50 INTERIOR FINISHES
- 51 INTERIOR FINISHES
- 52 INTERIOR FINISHES
- 53 INTERIOR FINISHES
- 54 INTERIOR FINISHES
- 55 INTERIOR FINISHES
- 56 INTERIOR FINISHES
- 57 INTERIOR FINISHES
- 58 INTERIOR FINISHES
- 59 INTERIOR FINISHES
- 60 INTERIOR FINISHES
- 61 INTERIOR FINISHES
- 62 INTERIOR FINISHES
- 63 INTERIOR FINISHES
- 64 INTERIOR FINISHES
- 65 INTERIOR FINISHES
- 66 INTERIOR FINISHES
- 67 INTERIOR FINISHES
- 68 INTERIOR FINISHES
- 69 INTERIOR FINISHES
- 70 INTERIOR FINISHES
- 71 INTERIOR FINISHES
- 72 INTERIOR FINISHES
- 73 INTERIOR FINISHES
- 74 INTERIOR FINISHES
- 75 INTERIOR FINISHES
- 76 INTERIOR FINISHES
- 77 INTERIOR FINISHES
- 78 INTERIOR FINISHES
- 79 INTERIOR FINISHES
- 80 INTERIOR FINISHES
- 81 INTERIOR FINISHES
- 82 INTERIOR FINISHES
- 83 INTERIOR FINISHES
- 84 INTERIOR FINISHES
- 85 INTERIOR FINISHES
- 86 INTERIOR FINISHES
- 87 INTERIOR FINISHES
- 88 INTERIOR FINISHES
- 89 INTERIOR FINISHES
- 90 INTERIOR FINISHES
- 91 INTERIOR FINISHES
- 92 INTERIOR FINISHES
- 93 INTERIOR FINISHES
- 94 INTERIOR FINISHES
- 95 INTERIOR FINISHES
- 96 INTERIOR FINISHES
- 97 INTERIOR FINISHES
- 98 INTERIOR FINISHES
- 99 INTERIOR FINISHES
- 100 INTERIOR FINISHES

NO.	DESCRIPTION	DATE

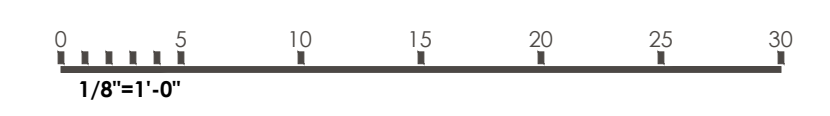


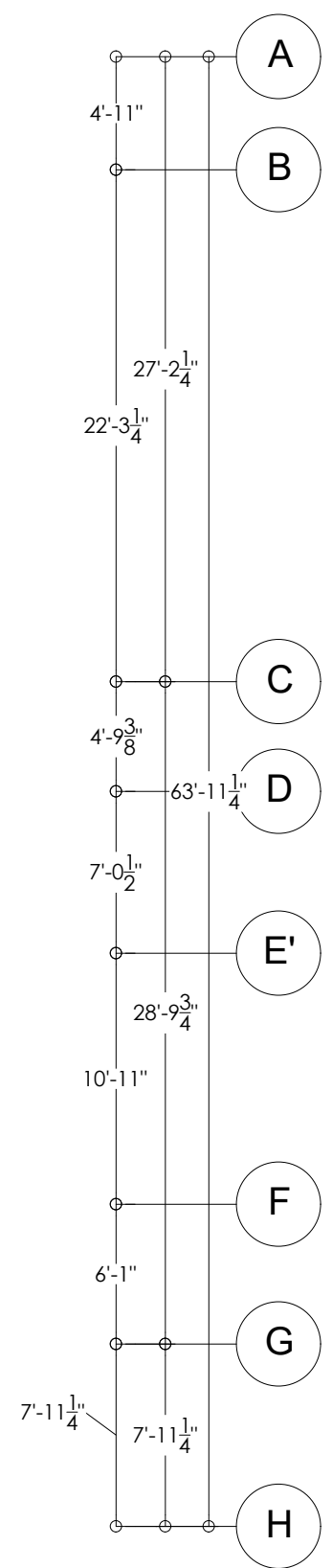
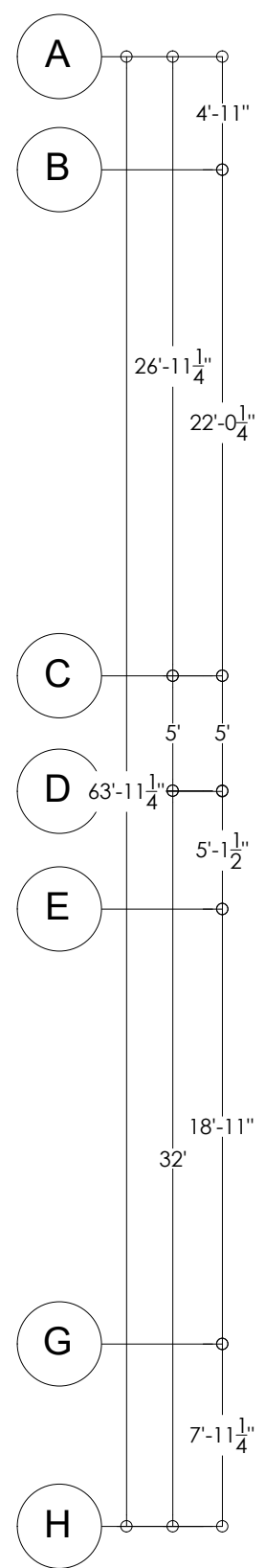
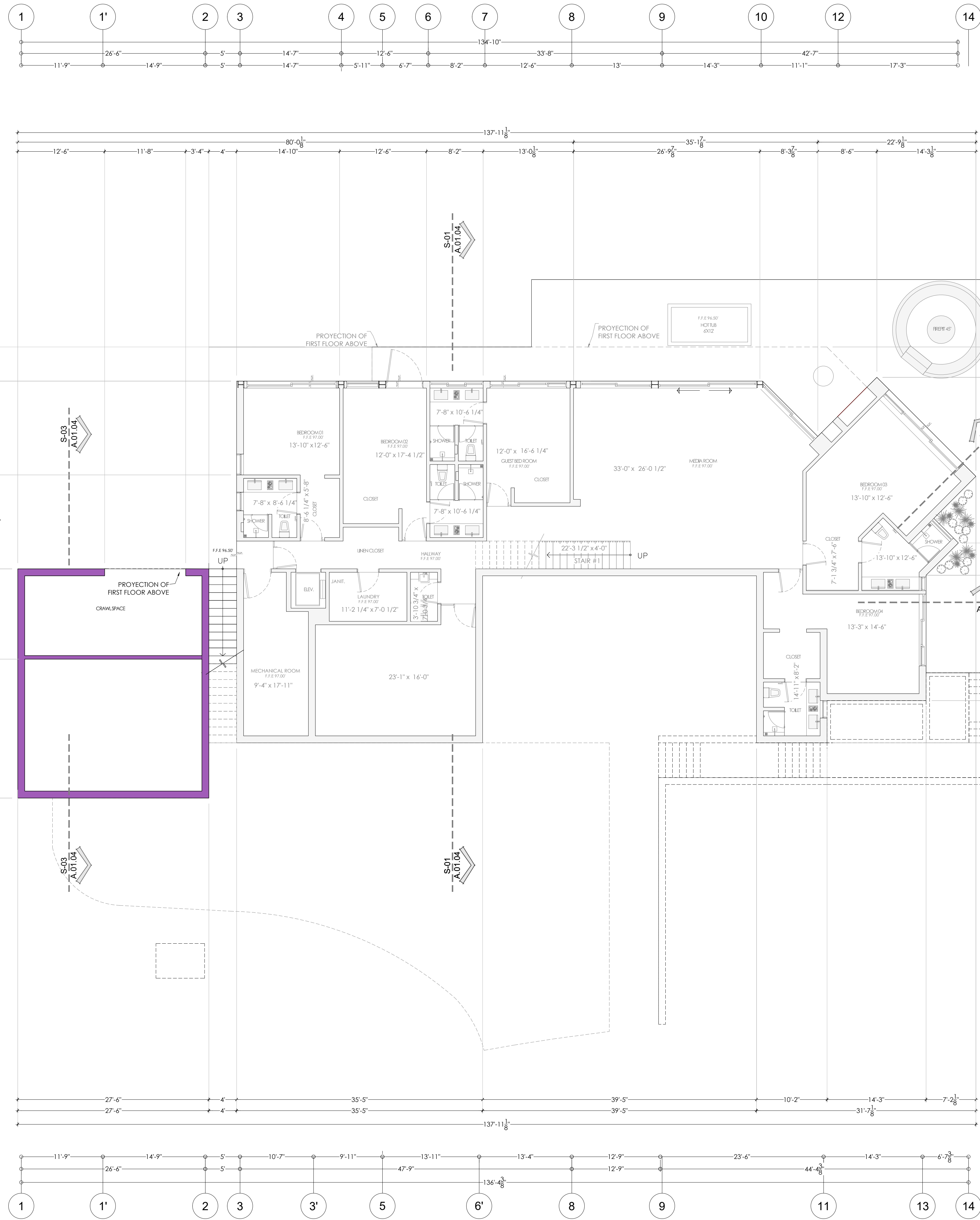
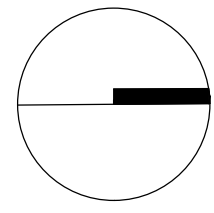
MASSY HOUSE
LOT No. 35
1170 SIGNAL HILL DRIVE
PEBBLE BEACH, CA 93953

ARCHITECTURAL PLAN
FIRST FLOOR

SCALE 1/8" = 1'-0"
DATE 10/23/25

A.01.01 ADU FIRST FLOOR





- GRADES.**
- DIMENSION IN FEET.
 - LEVELS IN FEET.
 - NO DIMENSIONS WILL BE TAKEN TO THE SCALE OF THIS PLAN.
 - THE DIMENSIONS ARE TO FINISHING CLOTHES.
 - THE DATES AND SUBSEQUENT REVISIONS OF EACH MUST BE CONSULTED.
 - THIS DRAWING MUST BE VERIFIED WITH THE CORRESPONDING INSTALLATIONS AND STRUCTURAL. ANY DISCREPANCIES SHOULD CONSULT WITH THE CONSTRUCTION MANAGEMENT.
 - THE CONTRACTOR WILL VERIFY AT THE SITE OF THE WORK, BEFORE EXECUTING, THE DIMENSIONS AND LEVELS INDICATED IN THIS DRAWING, MUST BE SUBJECT TO THE DIRECTION OF THE WORK. ANY DIFFERENCE HERE MAY BE, AS WELL AS THE INTERPRETATION OF THIS DRAWING BY THE CONTRACTOR HIMSELF.
 - THIS DRAWING nullifies ANY DRAWING PRIOR TO THIS DATE.
 - ALL FINISHES INDICATED IN THIS DRAWING MUST BE EXECUTED IN ACCORDANCE.
 - ACCORDING TO THE CORRESPONDING SPECIFICATIONS.
 - THIS DRAW SHOULD BE READ ALONG WITH THE SPECIFICATIONS CORRESPONDING TO EACH SPECIALTY.

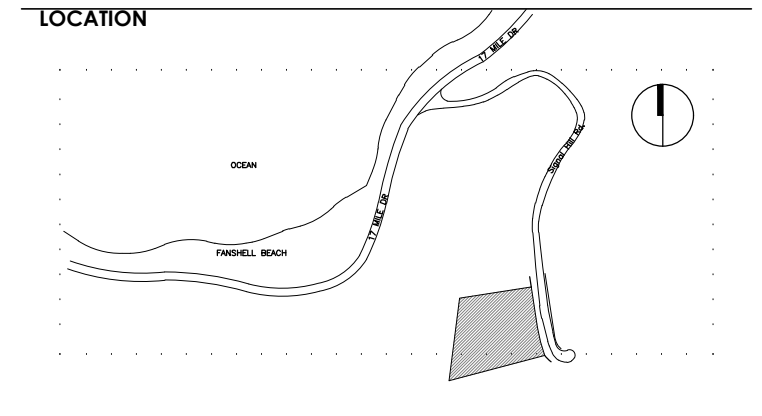
GENERAL CONSTRUCTION

- 01 DRAWING NUMBER ON SHEET
- 02 SHEET NUMBER
- 03 WALL THICK
- 04 WINDOW THICK
- 05 BLACKLINE HEIGHT CHANGE
- 06 COLUMN DIA. BUBBLE
- 07 ROOM NAME
- 08 ROOM NUMBER
- 09 ADD DOOR & DOOR NUMBER
- 10 SHEET NUMBER
- 11 DRAWING NUMBER ON SHEET
- 12 SHEET NUMBER
- 13 SHEET NUMBER
- 14 SHEET NUMBER
- 15 SHEET NUMBER
- 16 SHEET NUMBER
- 17 SHEET NUMBER
- 18 SHEET NUMBER
- 19 SHEET NUMBER
- 20 VIEW TITLE
- 21 LIVING HEIGHT CHANGE (WALL, ELEV.)
- 22 LIVING DIRECTION CHANGE
- 23 DRAWING NUMBER ON SHEET
- 24 SHEET NUMBER

PLAN KEY NOTES

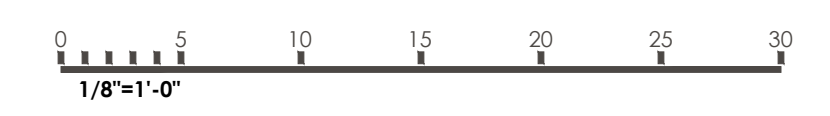
REVISIONS

NO.	DESCRIPTION	DATE

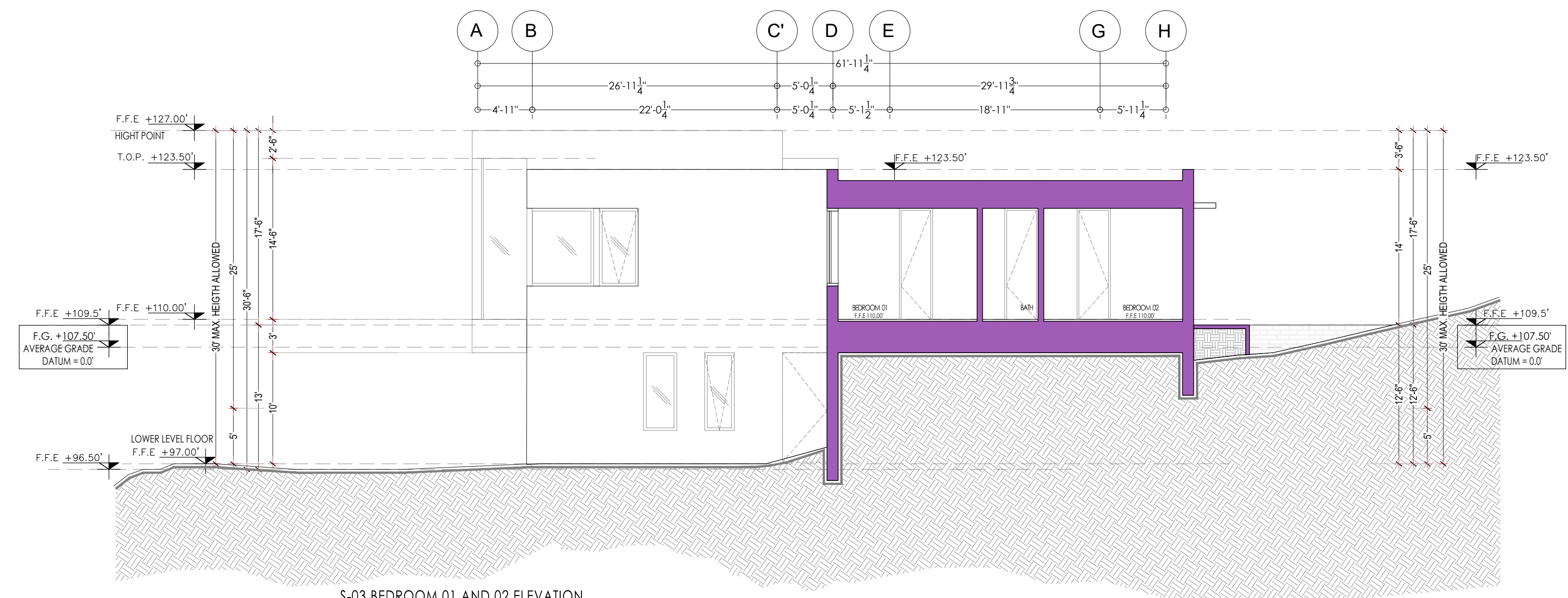


MASSY HOUSE
 LOT No. 35
 1170 SIGNAL HILL DRIVE
 PEBBLE BEACH, CA 93953
ARCHITECTURAL PLAN
BASEMENT FLOOR

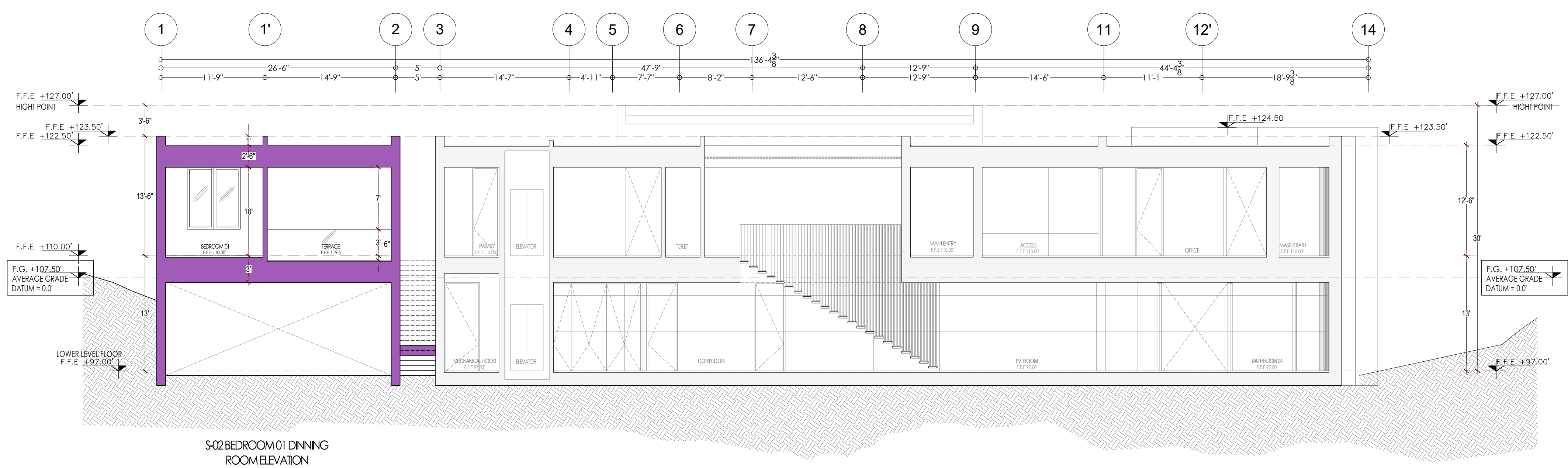
SCALE 1/8"=1'-0"
DATE 10/23/25



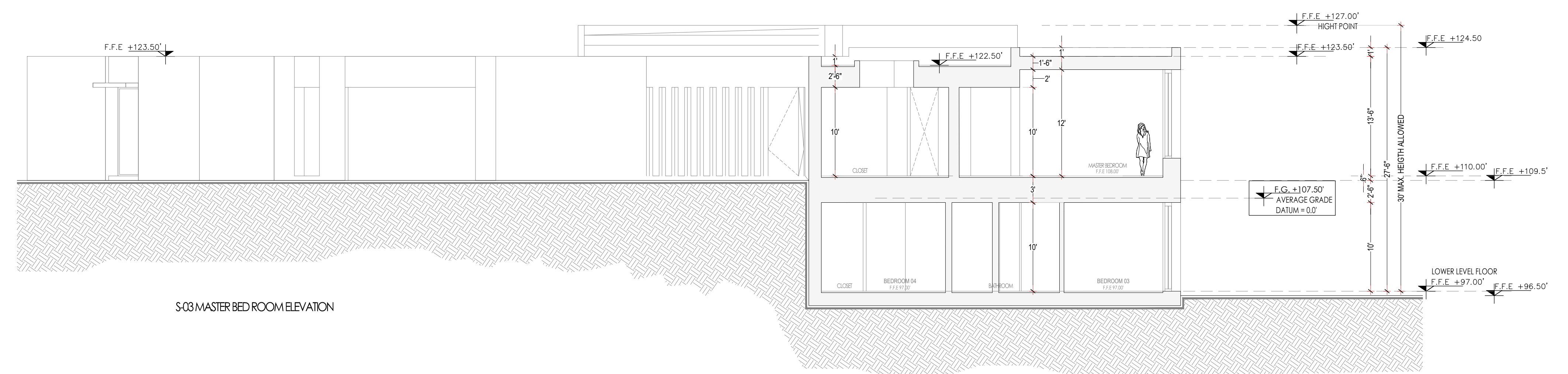
- GRADES.**
- DIMENSION IN FEET.
 - LEVELS IN FEET.
 - NO DIMENSIONS WILL BE TAKEN TO THE SCALE OF THIS PLANE.
 - THE DIMENSIONS ARE TO FINISHING CLOTHES.
 - THE DATES AND SUBSEQUENT REVISIONS OF EACH MUST BE CONSULTED.
 - THIS DRAWING MUST BE VERIFIED WITH THE CORRESPONDING INSTALLATION AND STRUCTURAL. ANY DISCREPANCIES SHOULD CONSULT WITH THE CONSTRUCTION MANAGEMENT.
 - THE CONTRACTOR WILL VERIFY AT THE SITE OF THE WORK, BEFORE EXECUTING, THE DIMENSIONS AND LEVELS INDICATED IN THIS DRAWING. MUST BE SUBJECT TO THE DIRECTION OF THE WORK. ANY DIFFERENCE THERE MAY BE, AS WELL AS THE INTERPRETATION OF THIS DRAWING BY THE CONTRACTOR HIMSELF.
 - THIS DRAWING INCLUDES ANY DRAWING PRIOR TO THIS DATE.
 - ALL FINISHES INDICATED IN THIS DRAWING MUST BE EXECUTED IN ACCORDANCE.
 - THIS DRAW SHOULD BE READ ALONG WITH THE SPECIFICATIONS CORRESPONDING TO EACH SPECIALTY.



S-03 BEDROOM 01 AND 02 ELEVATION



S-02 BEDROOM 01 DINNING ROOM ELEVATION

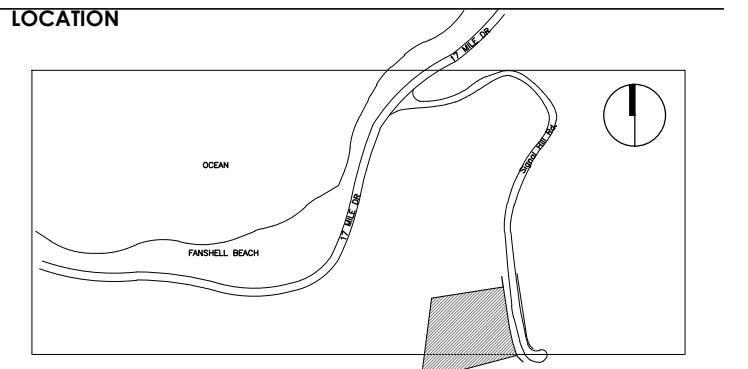


S-03 MASTER BED ROOM ELEVATION

- GENERAL CONSTRUCTION**
- 01 DRAWING NUMBER ON SHEET
 - 02 SHEET NUMBER
 - 03 WALL TYPE
 - 04 WINDOW TYPE
 - 05 SLAB ON GROUND CHANGE
 - 06 COLUMN GRID NUMBER
 - 07 ROOM NAME
 - 08 ROOM NUMBER
 - 09 ADJ. DOOR & DOOR NUMBER
 - 10 DETAIL SECTION
 - 11 DRAWING NUMBER ON SHEET
 - 12 DRAWING NUMBER ON SHEET
 - 13 DRAWING NUMBER ON SHEET
 - 14 DRAWING NUMBER ON SHEET
 - 15 DRAWING NUMBER ON SHEET
 - 16 DRAWING NUMBER ON SHEET
 - 17 DRAWING NUMBER ON SHEET
 - 18 DRAWING NUMBER ON SHEET
 - 19 DRAWING NUMBER ON SHEET
 - 20 VIEW TITLE
 - 21 LIVING HEIGHT CHANGE (INCH, ELEV.)
 - 22 SLAB DIRECTION CHANGE
 - 23 DRAWING NUMBER ON SHEET
 - 24 DRAWING NUMBER ON SHEET
- PLAN KEY NOTES**

REVISIONS

NO.	DESCRIPTION	DATE

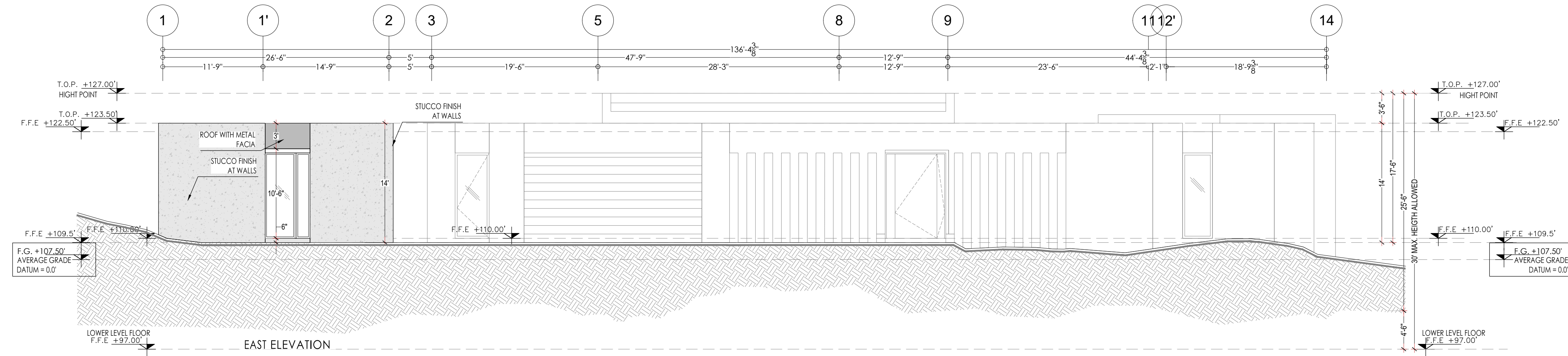


MASSY HOUSE
LOT No. 35
1170 SIGNAL HILL DRIVE
PEBBLE BEACH, CA 93953

ARCHITECTURAL PLAN SECTIONS

SCALE 1/8"=1'-0"
DATE 10/23/25

- GRADES.**
- DIMENSION IN FEET.
 - LEVELS IN FEET.
 - NO DIMENSIONS WILL BE TAKEN TO THE SCALE OF THIS PLANE.
 - THE DIMENSIONS ARE TO FINISHING CLOTHES.
 - THE DATES AND SUBSEQUENT REVISIONS OF EACH MUST BE CONSULTED.
 - THIS DRAWING MUST BE VERIFIED WITH THE CORRESPONDING INSTALLATIONS AND STRUCTURAL. ANY DISCREPANCIES SHOULD CONSULT WITH THE CONSTRUCTION MANAGEMENT.
 - THE CONTRACTOR WILL VERIFY AT THE SITE OF THE WORK, BEFORE EXECUTING, THE DIMENSIONS AND LEVELS INDICATED IN THIS DRAWING, MUST BE SUBJECT TO THE DIRECTION OF THE WORK. ANY DIFFERENCE THERE MAY BE, AS WELL AS THE INTERPRETATION OF THIS DRAWING BY THE CONTRACTOR HIMSELF.
 - THIS DRAWING nullifies ANY DRAWING PRIOR TO THIS DATE.
 - ALL FINISHES INDICATED IN THIS DRAWING MUST BE EXECUTED IN ACCORDANCE.
 - THIS DRAW SHOULD BE READ ALONG WITH THE SPECIFICATIONS CORRESPONDING TO EACH SPECIALTY.



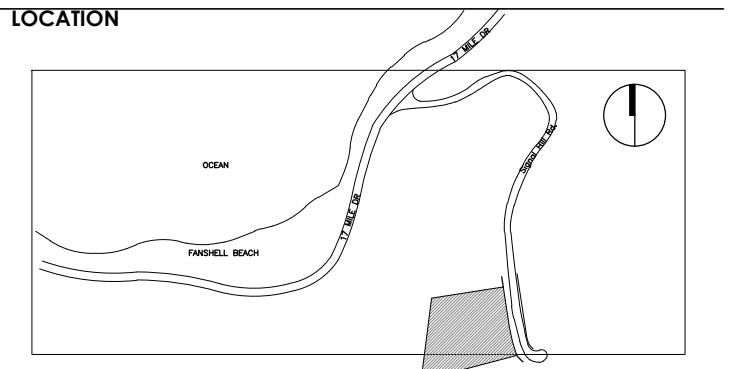
GENERAL CONSTRUCTION

- 01 DRAWING NUMBER ON SHEET
- 02 SHEET NUMBER
- 03 WINDOW TAG
- 04 WINDOW NUMBER CHANGE
- 05 COLUMN GRID BUBBLE
- 06 ROOM NAME
- 07 ROOM NUMBER
- 08 ADD DOOR & DOOR NUMBER
- 09 SHEET NUMBER
- 10 DRAWING NUMBER ON SHEET
- 11 SHEET NUMBER
- 12 DRAWING NUMBER ON SHEET
- 13 SHEET NUMBER
- 14 DRAWING NUMBER ON SHEET
- 15 DRAWING NUMBER
- 16 VIEW TITLE
- 17 LINEING HEIGHT CHANGE (INCH, ELEV.)
- 18 LINE DIRECTION CHANGE
- 19 DRAWING NUMBER ON SHEET
- 20 SHEET NUMBER

PLAN KEY NOTES

REVISIONS

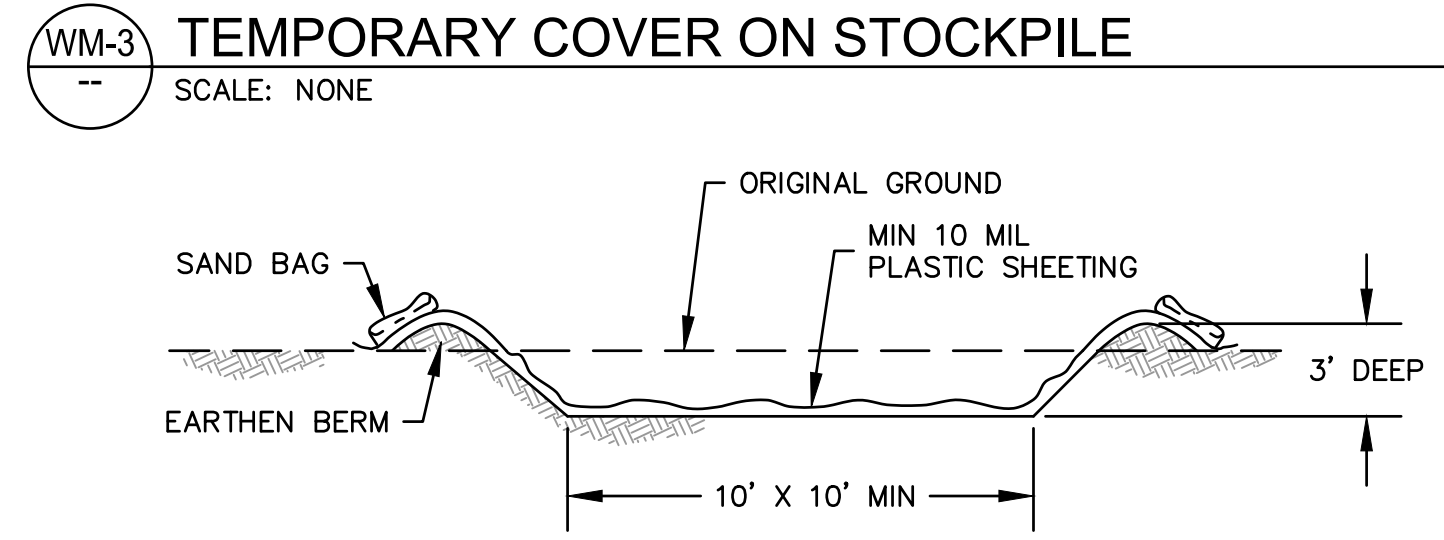
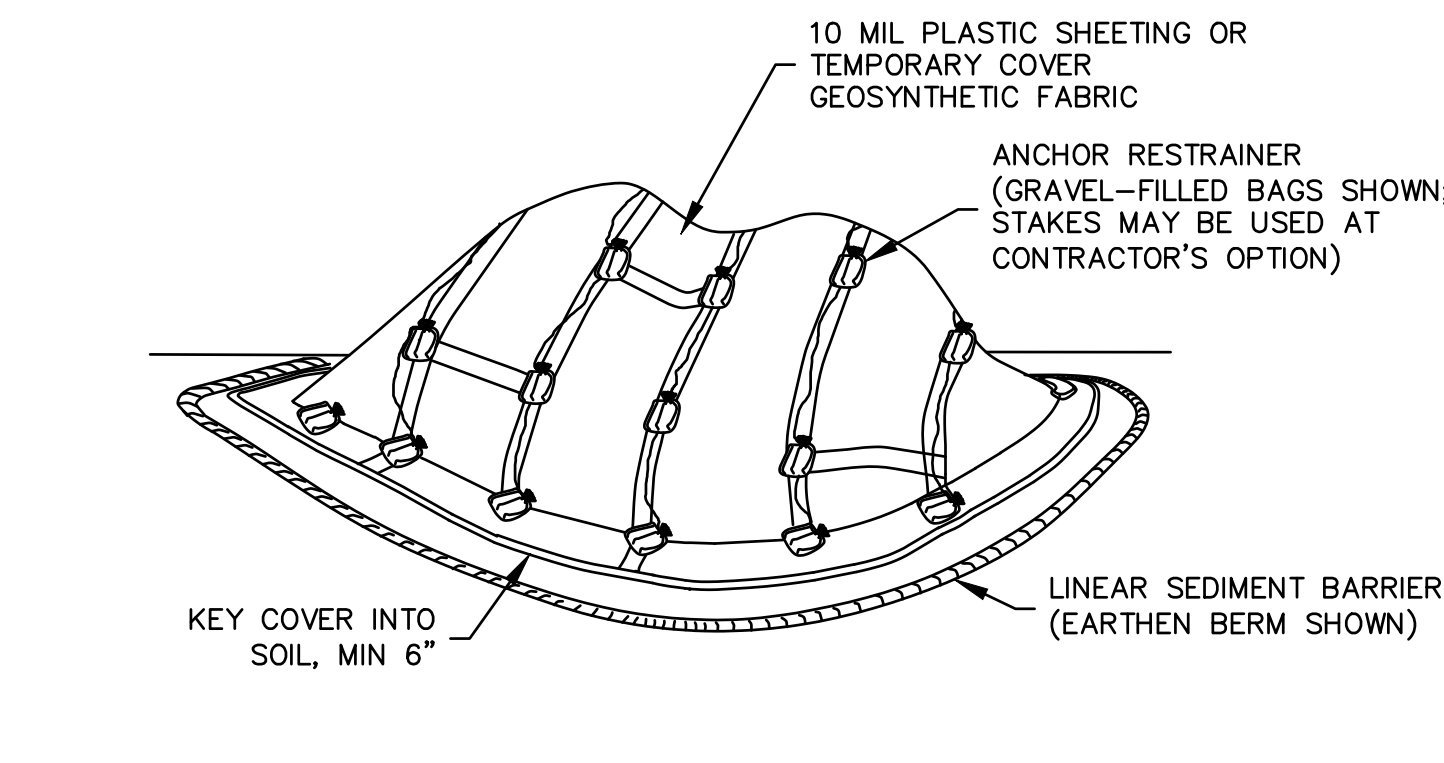
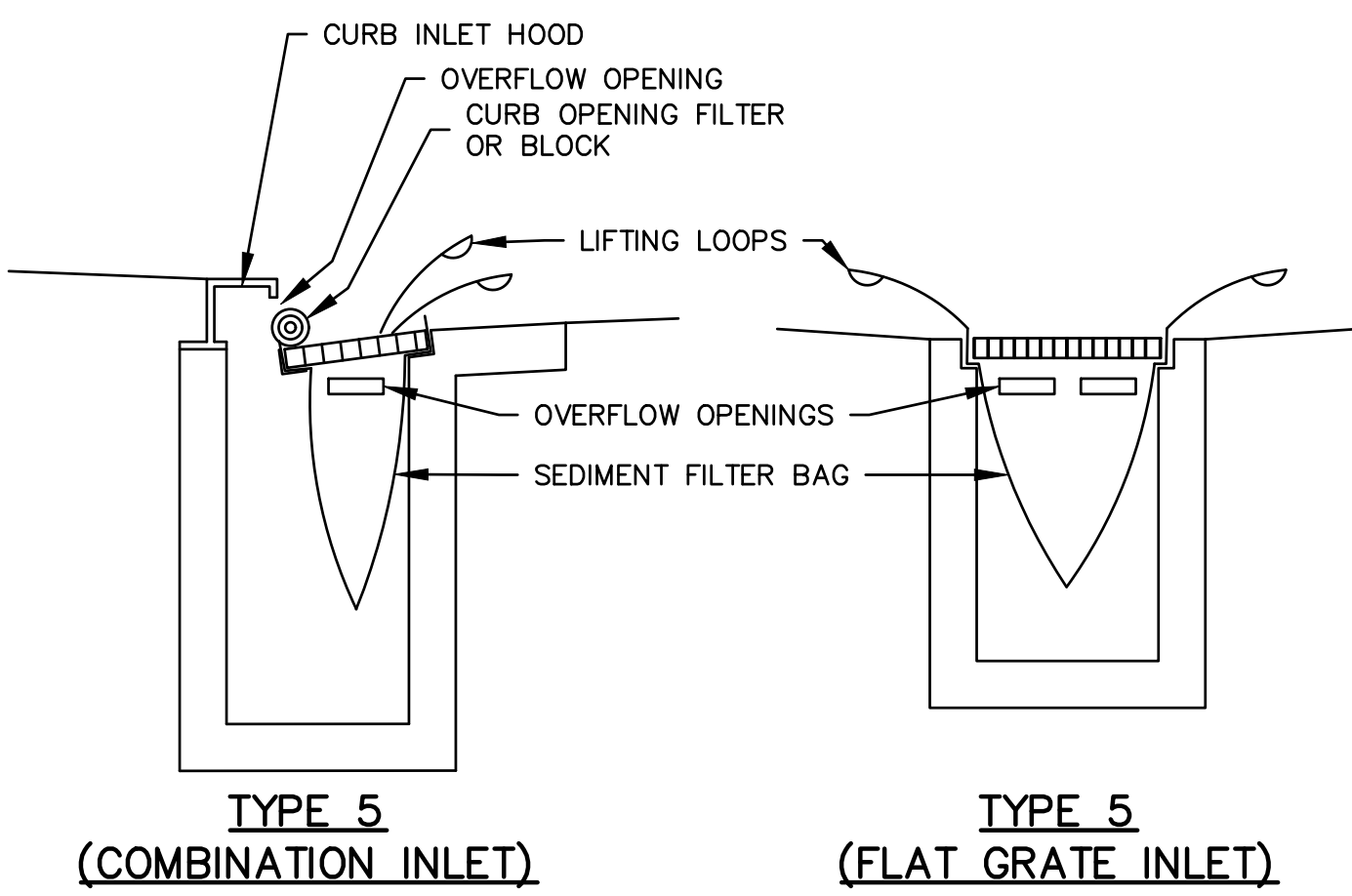
NO.	DESCRIPTION	DATE



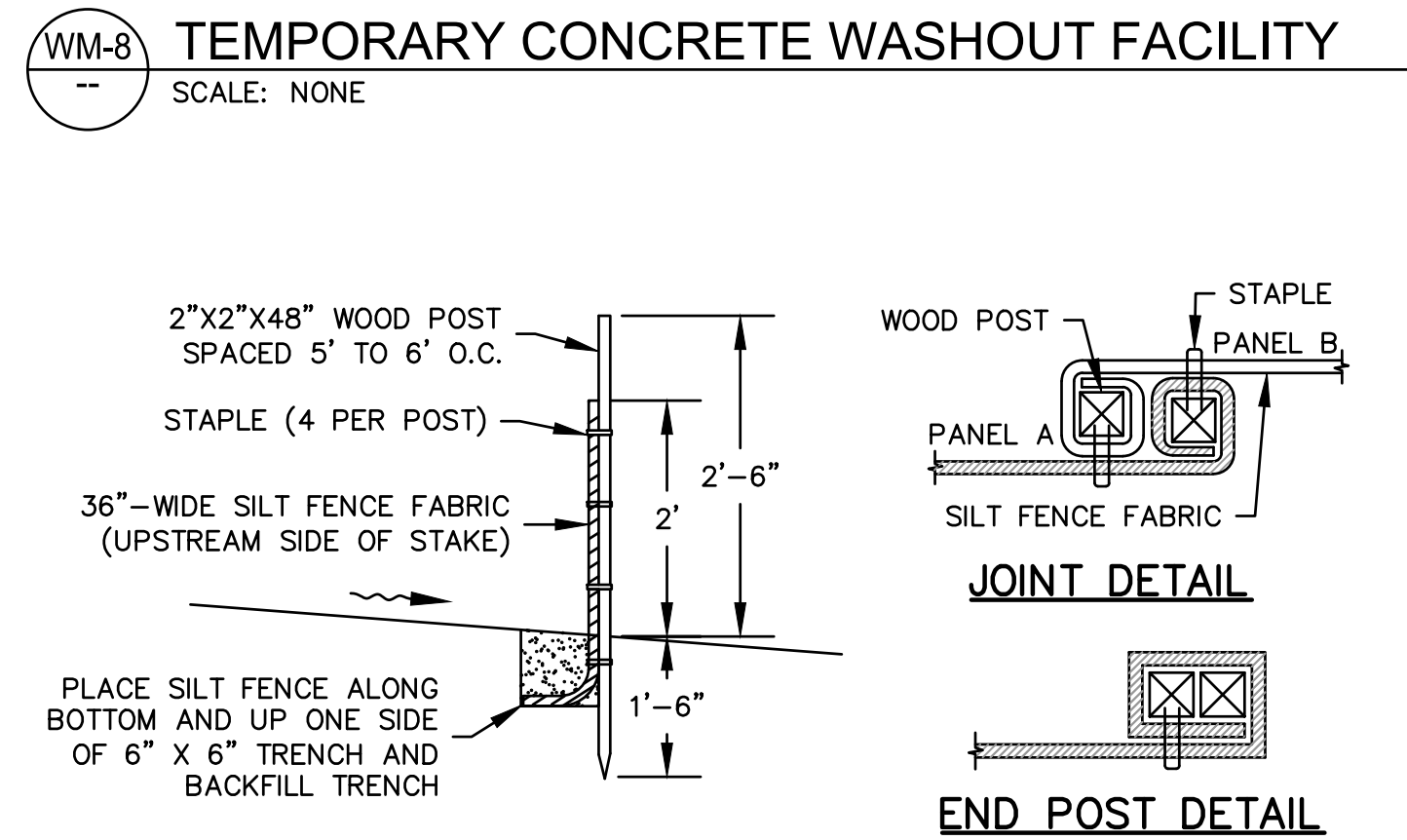
MASSY HOUSE
LOT No. 35
1170 SIGNAL HILL DRIVE
PEBBLE BEACH, CA 93953

**ARCHITECTURAL PLAN
ELEVATIONS**

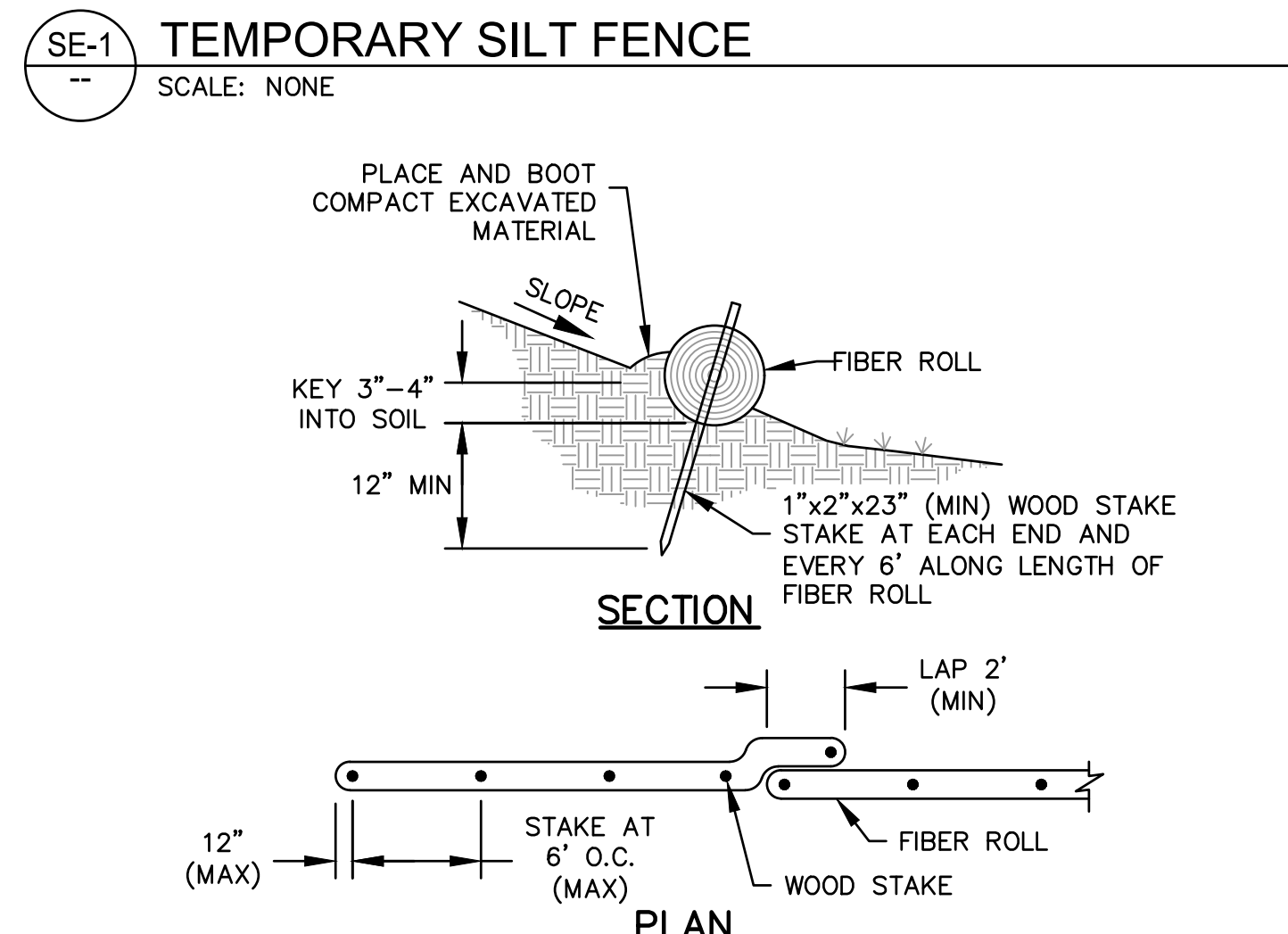
SCALE 1/8"=1'-0"
DATE 10/23/25



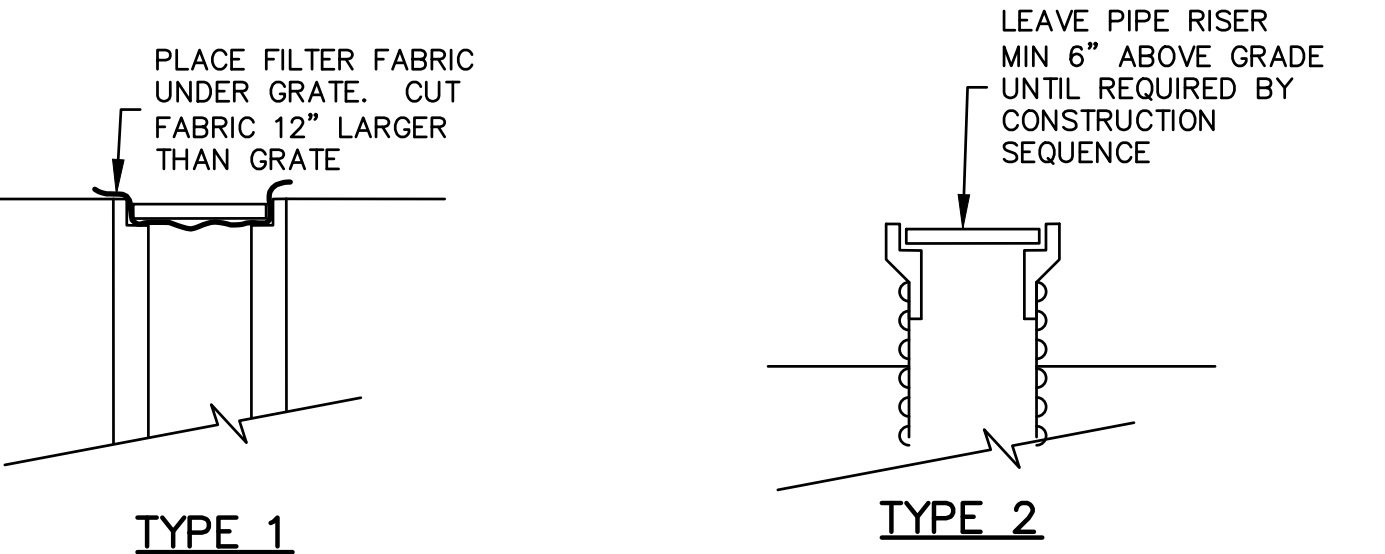
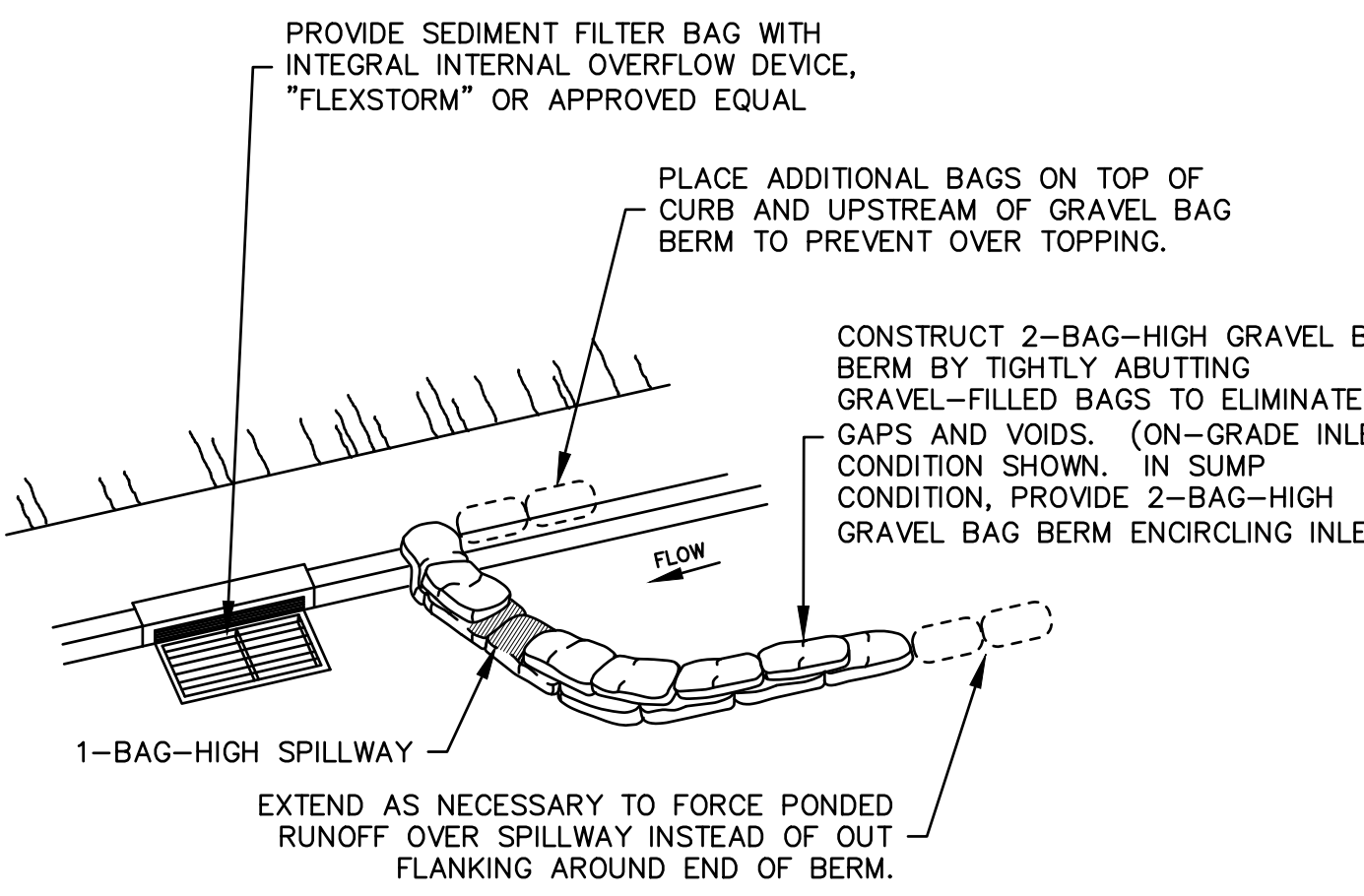
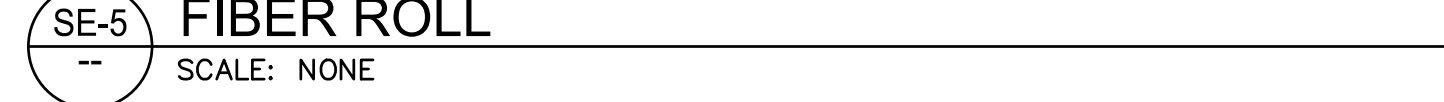
NOTES:
1. AT CONTRACTOR'S OPTION, AN EQUIVALENT 10' X 10' X 2'-DEEP ABOVE-GRADE WASHOUT MAY BE CONSTRUCTED USING LUMBER OR HAY BALES.



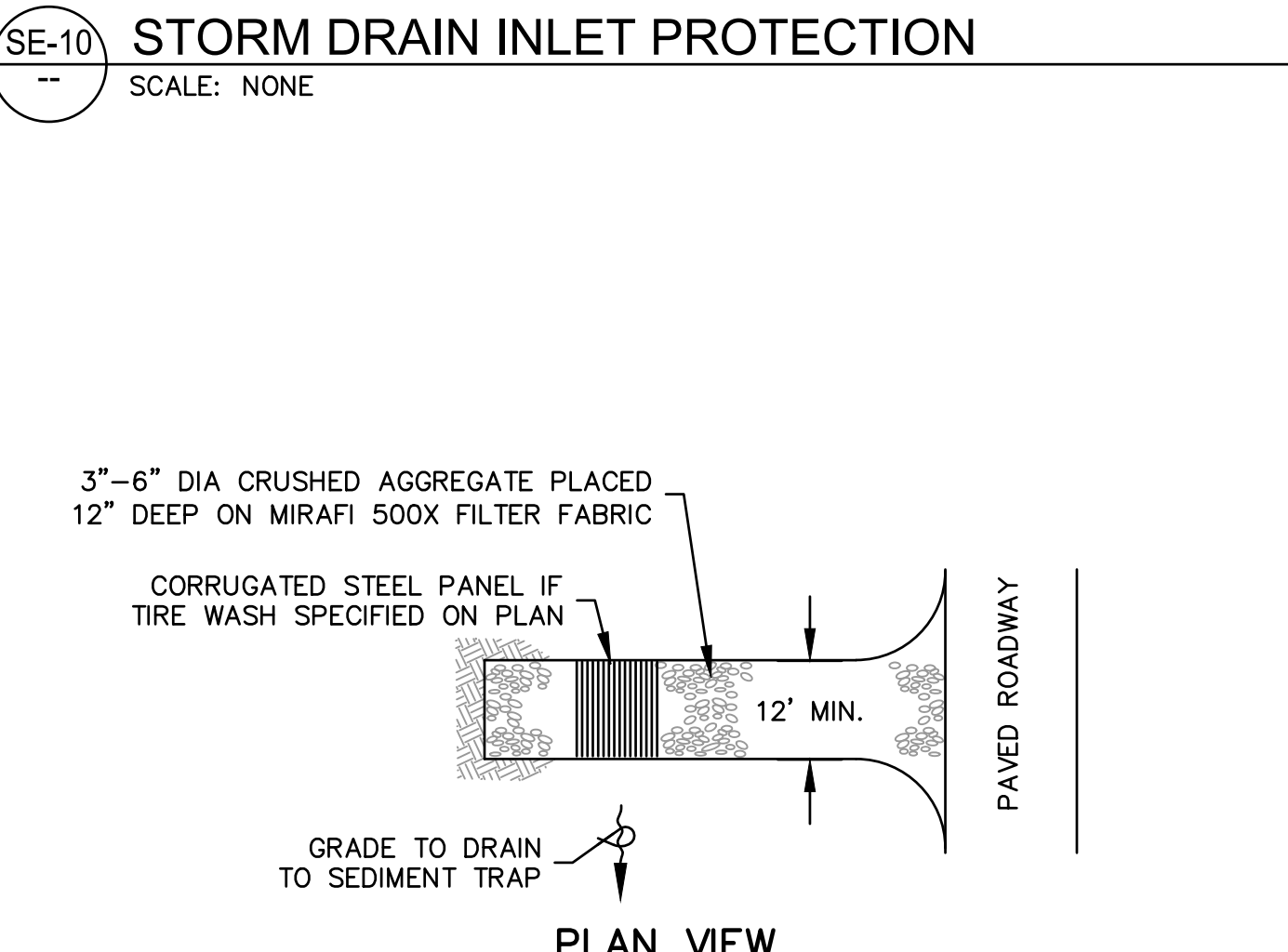
NOTES:
1. THE DOWNSTREAM END OF THE SILT FENCE SHALL HAVE THE LAST 8' ANGLED UP SLOPE TO PREVENT WATER FROM RUNNING AROUND THE END OF THE SILT FENCE
2. JOINT SECTIONS SHALL NOT BE PLACED AT SUMP LOCATIONS



NOTES:
1. PRIOR TO FIBER ROLL INSTALLATION, EXCAVATE A CONCAVE KEY TRENCH (FURROW) 3" TO 4" DEEP. INSTALL AND STAKE THE FIBER ROLL TIGHT AGAINST THE FURROW SO THAT STORMWATER RUNOFF WILL NOT PASS UNDER THE FIBER ROLL.
2. PLACE SOIL EXCAVATED FROM THE FURROW ON THE UPHILL SIDE OF THE FIBER ROLL AND BOOT COMPACT AGAINST FIBER ROLL AFTER FIBER ROLL INSTALLATION, TO PREVENT RUNOFF FROM PASSING UNDER THE FIBER ROLL.
3. AT JOINTS, OVERLAP FIBER ROLLS 2' (MIN), WITH THE ROLLS TIGHTLY ABUTTING. WHERE MULTIPLE ROWS ARE INSTALLED ON A SLOPE, STAGGER THE JOINTS ON ADJACENT ROWS 5' (MIN).
4. INSTALL FIBER ROLLS LEVEL (FOLLOWING THE GROUND CONTOUR) WHERE SHOWN.



NOTES:
1. PROVIDE TYPE 1 INLET PROTECTION AT ALL INLETS IF OTHER TYPE NOT PROVIDED.
2. TYPE 2 INLET PROTECTION MAY BE PROVIDED IN LIEU OF TYPE 1 AT CONTRACTOR'S OPTION.
3. TYPE 3 INLET PROTECTION SHALL BE PROVIDED FOR ALL EXISTING AND PROPOSED PUBLIC STORM DRAIN INLETS, AND ANY PRIVATE INLETS WHICH ARE TO REMAIN IN SERVICE DURING CONSTRUCTION.



0 1 2 3 INCHES

TEMPORARY EROSION AND SEDIMENT CONTROL PLAN

- THIS PROJECT IS NOT SUBJECT TO THE CONSTRUCTION GENERAL PERMIT. AREA OF DISTURBANCE: 0.32 ACRES.
- THIS PLAN DOES NOT NECESSARILY REFLECT THE BMP DEPLOYMENT REQUIRED DURING ALL CONSTRUCTION STAGES OR FOR ALL CONSTRUCTION SITE CONDITIONS. THE CONTRACTOR'S WATER POLLUTION CONTROL MANAGER (WPCM) IS RESPONSIBLE FOR REGULARLY EVALUATING SITE CONDITIONS AND IMPLEMENTING BMP'S NECESSARY TO PROTECT WATER QUALITY AND TO COMPLY WITH ALL RULES, REGULATIONS AND PERMITS.
- BEST MANAGEMENT PRACTICES (BMP'S) (MATERIALS AND THEIR INSTALLATION) SHALL CONFORM TO ONE OF THE FOLLOWING:
 - THE 2019 EDITION OF THE CALTRANS STORM WATER QUALITY HANDBOOKS.PDDG.
 - THE 2023 EDITION OF THE CALIFORNIA STORMWATER BEST MANAGEMENT PRACTICE (BMP) HANDBOOK BY THE CALIFORNIA STORMWATER QUALITY ASSOCIATION (CASQA).
- BMP DESIGNATIONS REFER TO THE DESIGNATIONS GIVEN IN THE CASQA BMP MANUAL.
- THIS PLAN IS INTENDED TO BE USED FOR INTERIM WATER POLLUTION CONTROL ONLY AND IS NOT TO BE USED FOR FINAL ELEVATIONS OR PERMANENT IMPROVEMENTS.
- REASONABLE CARE SHALL BE TAKEN WHEN HAULING ANY EARTH, SAND, GRAVEL, STONE, DEBRIS, PAPER OR ANY OTHER SUBSTANCE OVER ANY PUBLIC STREET, ALLEY OR OTHER PUBLIC PLACE. ANY MATERIAL THAT IS TO BE HAULED OFF-SITE SHALL BE COVERED. SHOULD ANY BLOW, SPILL, OR TRACK OVER AND UPON SAID PUBLIC OR ADJACENT PRIVATE PROPERTY, IMMEDIATE REMEDY SHALL OCCUR.
- KEEP ADDITIONAL EROSION AND SEDIMENT CONTROL MATERIALS ON SITE IN CASE IMMEDIATE REPAIRS OR MODIFICATIONS ARE REQUIRED.
- STORM WATER POLLUTION PREVENTION TRAINING SHALL BE PROVIDED AT THE BEGINNING OF CONSTRUCTION AND AT LEAST QUARTERLY DURING CONSTRUCTION FOR ALL PERSONS WORKING ON THE JOB SITE. TRAINING SHALL BE PROVIDED BY THE CONTRACTOR'S WATER POLLUTION CONTROL MANAGER IF THE PROJECT DOES NOT HAVE A SWPPP, OR BY THE CONTRACTOR-PROVIDED QSP IF THE PROJECT DOES HAVE A SWPPP. TOPICS SHALL INCLUDE, BUT ARE NOT LIMITED TO: GOOD HOUSEKEEPING, MATERIAL MANAGEMENT PRACTICES, SPILL PREVENTION AND RESPONSE, LOCATIONS AND FUNCTIONS OF EROSION AND SEDIMENT CONTROL DEVICES, AND FINES AND PENALTIES

BEST MANAGEMENT PRACTICES

- SCHEDULE THE WORK (BMP EC-1) TO MINIMIZE THE POTENTIAL FOR DISCHARGE OF POLLUTANTS.
- PROVIDE CONSTRUCTION SITE PERIMETER PROTECTION PRIOR TO GROUND DISTURBANCE AND MAINTAIN THROUGHOUT THE COURSE OF CONSTRUCTION. USE SILT FENCE (BMP SE-1) AND STABILIZED CONSTRUCTION ENTRANCE AND EXIT (BMP TC-1) UNLESS OTHERWISE SHOWN. A LINEAR SEDIMENT BARRIER BMP (E.G., LARGE-DIAMETER FIBER ROLL) MAY BE USED IN LIEU OF SILT FENCE AS A PERIMETER PROTECTION BMP ONLY IF APPROVED BY THE ENGINEER. REMOVE PERIMETER PROTECTION BMP'S AT THE END OF CONSTRUCTION, AFTER ALL DISTURBED SOIL AREAS HAVE BEEN STABILIZED.
- PROVIDE INLET PROTECTION (BMP SE-10) AT ALL DRAIN INLETS WITHIN THE CONSTRUCTION SITE AND AT DRAIN INLETS THAT RECEIVE RUNOFF FROM STREETS AND OTHER PAVED AREAS THAT MAY HAVE SEDIMENT TRACKED ONTO THEM FROM THE CONSTRUCTION SITE. REMOVE INLET PROTECTION BMP'S AT THE END OF CONSTRUCTION, AFTER ALL DISTURBED SOIL AREAS HAVE BEEN STABILIZED.
- LINEAR SEDIMENT CONTROL BMP'S SHALL BE ONE OF THE FOLLOWING:
 - SE-5 FIBER ROLL
 - SE-12 MANUFACTURED LINEAR SEDIMENT BARRIER
 - SE-13 COMPOST SOCK OR COMPOST BERM
- FINISH GRADE AND INSTALL PERMANENT EROSION CONTROL (MULCH AND LANDSCAPING) AS EARLY IN THE CONSTRUCTION SEQUENCE AS FEASIBLE. PROVIDE TEMPORARY "EFFECTIVE SOIL COVER" ON ALL "INACTIVE DISTURBED AREAS" (DEFINED AS AREAS WHICH HAVE NOT BEEN DISTURBED FOR AT LEAST 14 DAYS) PRIOR TO INSTALLATION OF FINAL LANDSCAPING, IF FINAL LANDSCAPING CANNOT BE INSTALLED WITHIN THE REQUIRED 14 DAY WINDOW. FOR FINISH GRADED AREAS, IMPLEMENT PERMANENT SOIL COVER AS SHOWN ON THE LANDSCAPE DRAWINGS. WHERE PERMANENT EROSION CONTROL WILL NOT BE IMPLEMENTED, IMPLEMENT ONE OF THE FOLLOWING TEMPORARY BMP'S:
 - EC-3 TEMPORARY HYDRAULIC MULCH
 - EC-4 TEMPORARY HYDROSEED
 - EC-6 TEMPORARY STRAW MULCH
- SELECT THE TEMPORARY SOIL COVER BMP BASED ON THE DURATION THAT THE BMP IS NEEDED.
- FOR TEMPORARY HYDRAULIC MULCH AND TEMPORARY HYDROSEED, APPLY FIBER AT A MINIMUM RATE OF 2,000 LBS/ACRE. APPLY TACKED STRAW AT A MINIMUM RATE OF 2,000 LBS/ACRE. APPLY TACKIFIER AT THE MANUFACTURER'S RECOMMENDED RATE FOR THE SLOPE, SOIL AND WIND CONDITIONS.
- PROVIDE WIND EROSION CONTROL (BMP WE-1) AT ALL TIMES DURING CONSTRUCTION AS REQUIRED BY FEDERAL, STATE, AND LOCAL AGENCY REQUIREMENTS.
- PROVIDE VELOCITY DISSIPATION DEVICE (BMP EC-10) AT ALL PIPE DISCHARGE LOCATIONS AND OTHER LOCATIONS WHERE CONCENTRATED STORMWATER DISCHARGE MAY CAUSE EROSION.
- PROVIDE EARTH DIKES AND DRAINAGE SWALES (BMP EC-9) WHERE NEEDED TO PREVENT STORMWATER RUN-ON FROM OFFSITE AREAS FROM ENTERING THE WORK AREA AND CAUSING EROSION. THE WPCM SHALL REGULARLY EVALUATE THE DRAINAGE PATTERNS ON THE CONSTRUCTION SITE AND DIRECT IMPLEMENTATION OF THIS BMP WHERE APPROPRIATE.
- PROVIDE EARTH DIKES AND DRAINAGE SWALES (BMP EC-9) AND SLOPE DRAINS (BMP EC-11) WHERE NEEDED TO COLLECT AND CONVEY CONCENTRATED DRAINAGE DOWN A GRADED SLOPE. THE WPCM SHALL REGULARLY EVALUATE THE DRAINAGE PATTERNS ON THE CONSTRUCTION SITE AND DIRECT IMPLEMENTATION OF THIS BMP WHERE APPROPRIATE.
- IMPLEMENT ALL APPLICABLE NON-STORMWATER BMP'S (NS- SERIES BMP'S) AND MATERIAL MANAGEMENT BMP'S (WM- SERIES BMP'S).
- LIMIT THE USE OF PLASTIC MATERIALS WHEN MORE SUSTAINABLE, ENVIRONMENTALLY FRIENDLY ALTERNATIVES EXIST. WHERE PLASTIC MATERIALS ARE DEEMED NECESSARY, CONSIDER THE USE OF PLASTIC MATERIALS RESISTANT TO SOLAR DEGRADATION AND WHICH MAY BE RE-USED.

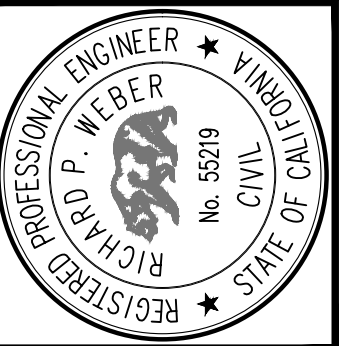
MONTEREY COUNTY REQUIREMENTS

- ALL GRADING SHALL CONFORM TO THE MONTEREY COUNTY CODE, INCLUDING CHAPTER 16.08 "GRADING" AND CHAPTER 16.12 "EROSION CONTROL".
- PRIOR TO COMMENCEMENT OF ANY LAND DISTURBANCE, THE OWNER/APPLICANT SHALL SCHEDULE AN INSPECTION WITH HCD-ENVIRONMENTAL SERVICES TO ENSURE ALL NECESSARY SEDIMENT CONTROLS ARE IN PLACE AND THE PROJECT IS COMPLIANT WITH MONTEREY COUNTY GRADING AND EROSION CONTROL REGULATIONS.
- DURING CONSTRUCTION THE OWNER/APPLICANT SHALL SCHEDULE AN INSPECTION WITH HCD-ENVIRONMENTAL SERVICES TO UPDATE COMPACTION TEST RECORDS, INSPECT DRAINAGE DEVICE INSTALLATION, REVIEW THE MAINTENANCE AND EFFECTIVENESS OF BMP'S INSTALLED, AS WELL AS, TO VERIFY THAT POLLUTANTS OF CONCERN ARE NOT DISCHARGED FROM THE SITE.
- PRIOR TO FINAL INSPECTION, THE OWNER/APPLICANT SHALL SCHEDULE AN INSPECTION WITH HCD-ENVIRONMENTAL SERVICES TO CONDUCT A FINAL GRADING INSPECTION, COLLECT FINAL GEOTECHNICAL LETTER OF PERFORMANCE, ENSURE THAT ALL DISTURBED AREAS HAVE BEEN STABILIZED AND THAT ALL TEMPORARY EROSION AND SEDIMENT CONTROL MEASURES THAT ARE NO LONGER NEEDED HAVE BEEN REMOVED.
- ALL OR PART OF THE CONSTRUCTION OF THIS PROJECT IS EXPECTED TO OCCUR DURING THE WINTER SEASON (OCTOBER 15TH THROUGH APRIL 15TH).
- IT SHALL BE THE RESPONSIBILITY OF THE OWNER AND THE PERMITEE TO ENSURE THAT EROSION DOES NOT OCCUR FROM AN ACTIVITY DURING OR AFTER PROJECT CONSTRUCTION. ADDITIONAL MEASURES, BEYOND THOSE SPECIFIED, MAY BE REQUIRED AS DEEMED NECESSARY TO CONTROL ACCELERATED EROSION. (MCC 16.12.100)
- ACTUAL GRADING SHALL BEGIN WITHIN 30 DAYS OF VEGETATION REMOVAL OR THE AREA SHALL BE PLANTED TO CONTROL EROSION. VEGETATION REMOVAL BETWEEN OCTOBER 15TH AND APRIL 15TH SHALL NOT PRECEDE SUBSEQUENT GRADING OR CONSTRUCTION ACTIVITIES BY MORE THAN 15 DAYS.
- THE FOLLOWING PROVISIONS SHALL APPLY BETWEEN OCTOBER 1 AND APRIL 30.
 - DISTURBED SURFACES NOT INVOLVED IN THE IMMEDIATE OPERATIONS MUST BE PROTECTED BY APPLYING STRAW MULCH AT 2000 LBS. PER ACRE AND ANCHORED BY TRACK-WALKING TO PREVENT MOVEMENT DURING WATER FLOW.
 - RUNOFF FROM THE SITE SHALL BE DETAINED OR FILTERED BY BERMS, VEGETATED FILTER STRIPS AND/OR CATCH BASINS TO PREVENT THE ESCAPE OF SEDIMENT FROM THE SITE. THESE DRAINAGE CONTROLS MUST BE MAINTAINED BY THE CONTRACTOR AS NECESSARY TO ACHIEVE THEIR PURPOSE THROUGHOUT THE LIFE OF THE PROJECT. SEE THIS SHEET FOR EROSION CONTROL PLAN AND EROSION CONTROL DETAILS.
 - EROSION CONTROL MEASURES SHALL BE IN PLACE AT THE END OF EACH DAY'S WORK.
 - THE BUILDING INSPECTOR SHALL STOP OPERATIONS DURING PERIODS OF INCLEMENT WEATHER IF HE DETERMINES THAT EROSION PROBLEMS ARE NOT BEING CONTROLLED ADEQUATELY.
 - CUT AND FILL SLOPES SHALL BE PLANTED WITH AN SEED MIX APPROVED BY THE LANDSCAPE ARCHITECT. AMOUNT OF SEED AND FERTILIZER SHALL BE APPROVED BY THE LANDSCAPE ARCHITECT.
- ALL SURFACES EXPOSED OR EXPECTED TO BE EXPOSED DURING GRADING ACTIVITIES SHALL BE PREPARED AND MAINTAINED THROUGH THE LENGTH OF THE ENTIRE PROJECT TO PROTECT AGAINST EROSION.
- AT ALL TIMES DURING CONSTRUCTION AND UNTIL FINAL COMPLETION, THE CONTRACTOR, WHEN HE OR HIS SUBCONTRACTORS ARE OPERATING EQUIPMENT ON THE SITE, SHALL PREVENT THE FORMATION OF AN AIRBORNE DUST NUISANCE BY WATERING AND/OR TREATING THE SITE OF THE WORK IN SUCH A MANNER THAT WILL CONFINE DUST PARTICLES TO THE IMMEDIATE SURFACE OF THE WORK. THE CONTRACTOR WILL BE RESPONSIBLE FOR ANY DAMAGE DONE BY DUST FROM HIS OR HER SUBCONTRACTOR.

BMP OBSERVATION AND MAINTENANCE

- VISUALLY OBSERVE AND MAINTAIN BEST MANAGEMENT PRACTICES (BMP'S) AS FOLLOWS:
 - WEEKLY, AND
 - WITHIN 72 HOURS PRIOR TO EACH STORM EVENT, AND
 - WITHIN 96 HOURS AFTER EACH STORM EVENT.
 - DAILY DURING STORM EVENTS
- REPAIR DAMAGED BMP'S WITHIN 48 HOURS OF OBSERVATION.
- SEDIMENT SHALL BE REMOVED FROM SEDIMENT CONTROL BMP'S BEFORE SEDIMENT HAS ACCUMULATED TO A DEPTH OF ONE THIRD THE HEIGHT OF THE SEDIMENT BARRIER OR SUMP, IF NOT OTHERWISE SPECIFIED IN THE DRAWINGS OR SPECIFICATIONS OR BY THE BMP SUPPLIER OR MANUFACTURER.
- TRASH AND DEBRIS SHALL BE REMOVED FROM BMP'S DURING SCHEDULED INSPECTIONS.
- REMOVED SEDIMENT SHALL BE PLACED AT AN APPROVED LOCATION AND IN SUCH A MANNER THAT IT WILL NOT ERODE, OR SHALL BE DISPOSED OF OFF-SITE.
- REPAIR RILLS AND GULLIES BY RE-GRADING AND THEN TRACK-WALKING PERPENDICULAR TO THE SLOPE. PROVIDE TEMPORARY SOIL COVER IF NECESSARY.

Civil Engineering
Land Surveying
4 Heilich Court
Monterey, California
831.449.9225
whitsonengineers.com



NO.	DATE	REVISION

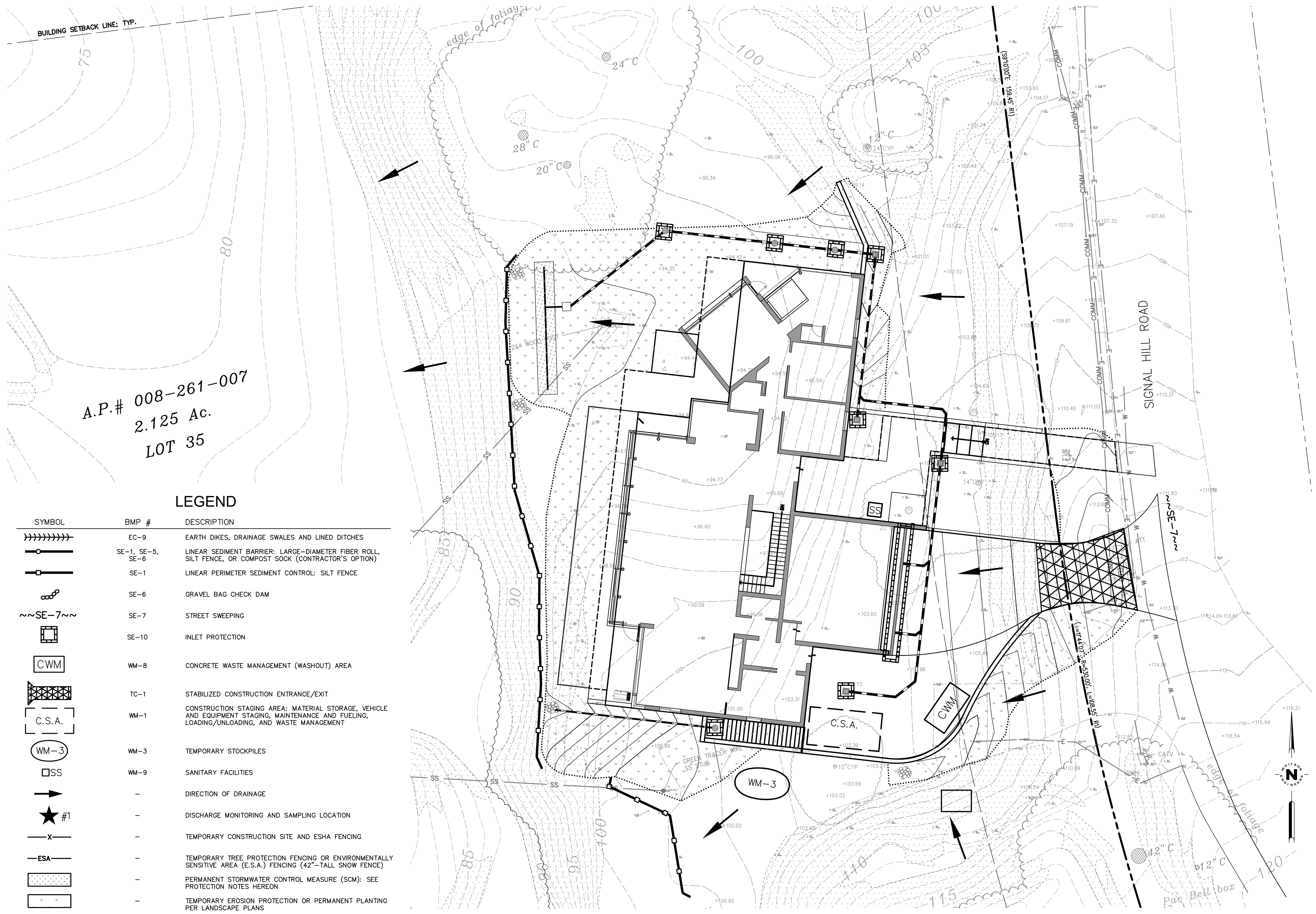
Monterey County, California

1170 SIGNAL HILL ROAD
TEMPORARY EROSION AND SEDIMENT CONTROL PLAN - DETAILS
APN 008-261-007

SCALE:
DRAWN: HK
JOB No.: 2335.00
SHEET
C3.1
OF 9

T:\Monterey Projects\2335\CAD\2335-C06L.dwg Heilich Jun 19, 2024 - 11:13am

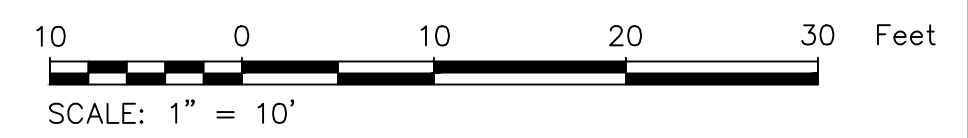
T:\Monterey Projects\2335\CAD\2335-CM1.dwg Heblbe Jun 19, 2024 - 11:13am



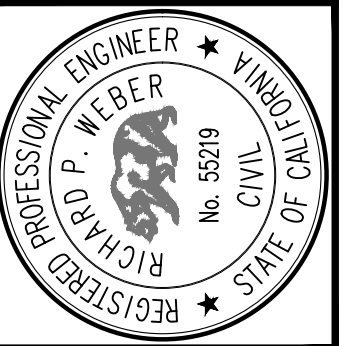
A.P.# 008-261-007
2.125 Ac.
LOT 35

LEGEND

SYMBOL	BMP #	DESCRIPTION
	EC-9	EARTH DIKES, DRAINAGE SWALES AND LINED DITCHES
	SE-1, SE-5, SE-6	LINEAR SEDIMENT BARRIER: LARGE-DIAMETER FIBER ROLL, SILT FENCE, OR COMPOST SOCK (CONTRACTOR'S OPTION)
	SE-1	LINEAR PERIMETER SEDIMENT CONTROL: SILT FENCE
	SE-6	GRAVEL BAG CHECK DAM
	SE-7	STREET SWEEPING
	SE-10	INLET PROTECTION
	WM-8	CONCRETE WASTE MANAGEMENT (WASHOUT) AREA
	TC-1	STABILIZED CONSTRUCTION ENTRANCE/EXIT
	WM-1	CONSTRUCTION STAGING AREA: MATERIAL STORAGE, VEHICLE AND EQUIPMENT STAGING, MAINTENANCE AND FUELING, LOADING/UNLOADING, AND WASTE MANAGEMENT
	WM-3	TEMPORARY STOCKPILES
	WM-9	SANITARY FACILITIES
	-	DIRECTION OF DRAINAGE
	-	DISCHARGE MONITORING AND SAMPLING LOCATION
	-	TEMPORARY CONSTRUCTION SITE AND ESHA FENCING
	-	TEMPORARY TREE PROTECTION FENCING OR ENVIRONMENTALLY SENSITIVE AREA (E.S.A.) FENCING (42"-TALL SNOW FENCE)
	-	PERMANENT STORMWATER CONTROL MEASURE (SCM): SEE PROTECTION NOTES HEREON
	-	TEMPORARY EROSION PROTECTION OR PERMANENT PLANTING PER LANDSCAPE PLANS



Civil Engineering
Land Surveying
4 Hazel Court
Monterey, California
831.649.9225
whitsonengineers.com



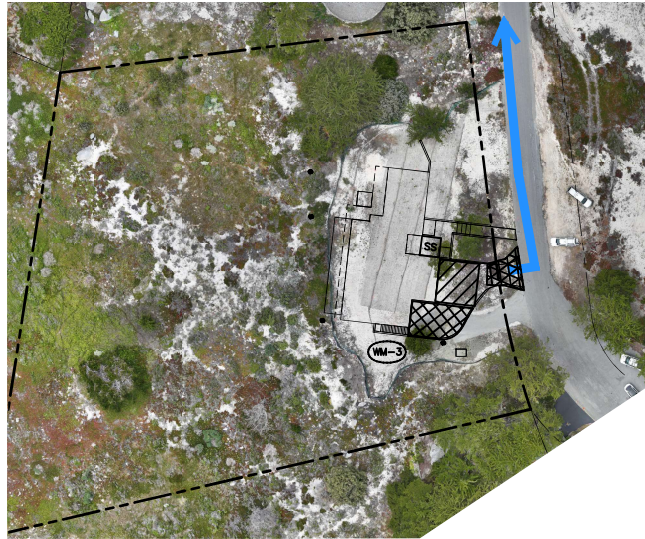
NO.	DATE	DESCRIPTION

Monterey County, California

1170 SIGNAL HILL ROAD
TEMPORARY EROSION AND SEDIMENT CONTROL PLAN

SCALE: 1" = 10'
DRAWN: HK
JOB No.: 2335.00

SHEET
C3.2
OF 9



LEGEND

- PROPERTY LINE
- WORKER PARKING
- EQUIPMENT PARKING
- TRUCK ROUTE FOR CONSTRUCTION DEBRIS AND RECYCLING
- TEMPORARY STOCKPILES (LOCATIONS WILL VARY)
- SANITARY FACILITIES (LOCATIONS WILL VARY)
- STABILIZED CONSTRUCTION ENTRANCE/EXIT OR TIRE WASH

EARTHWORK QUANTITIES

780 CY CUT
500 CY FILL
280 CY EXPORT

CONTACT INFO

ARCHITECT
LEGORRETA
PALACIO DE VARSALLES 285-A
MEXICO D.F.
C.P. 11020
TEL: +52 (55) 52 51.96.98

OWNER
Signal Hill LLC
TEL: (650) 380-3187

CONSTRUCTION COORDINATOR

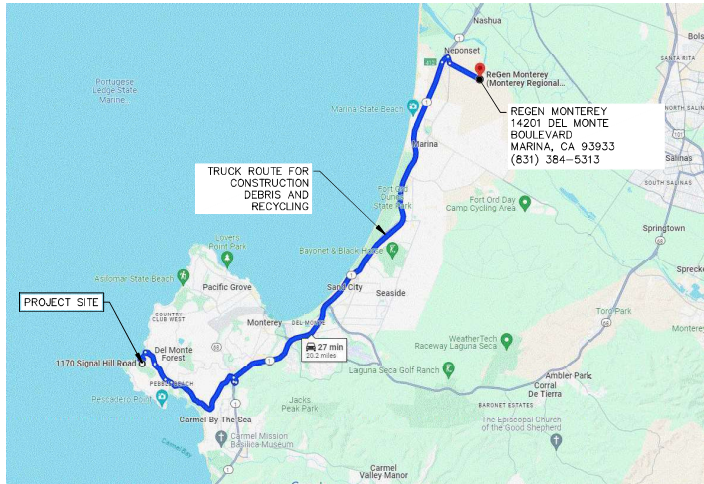
CONTRACTOR SHALL PROVIDE A CONSTRUCTION COORDINATOR THAT CAN BE CONTACTED DURING CONSTRUCTION. SHOULD QUESTIONS ARISE DURING CONSTRUCTION (IN CASE OF BOTH REGULAR INQUIRIES AND IN EMERGENCIES), THEIR CONTACT INFORMATION (INCLUDING THEIR ADDRESS AND 24-HOUR PHONE NUMBERS) SHALL BE CONSPICUOUSLY POSTED AT THE JOB SITE IN A MANNER THAT THE CONTACT INFORMATION IN READILY VISIBLE FROM PUBLIC VIEWING AREAS. THE POSTING SHALL INDICATE THAT THE CONSTRUCTION COORDINATOR SHOULD BE CONTACTED TO ANSWER ANY QUESTIONS THAT ARISE DURING CONSTRUCTION (IN CASE OF BOTH REGULAR INQUIRIES AND IN EMERGENCIES). THE CONSTRUCTION COORDINATOR SHALL RECORD THE NAME, PHONE NUMBER AND NATURE OF ALL COMPLAINTS (IF ANY) RECEIVED DURING CONSTRUCTION, AND SHALL INVESTIGATE COMPLAINTS AND TAKE REMEDIAL ACTION, IF NECESSARY, WITHIN 24-HOURS OF RECEIPT OF THE COMPLAINT OR INQUIRY.

CONSTRUCTION MANAGEMENT NOTES

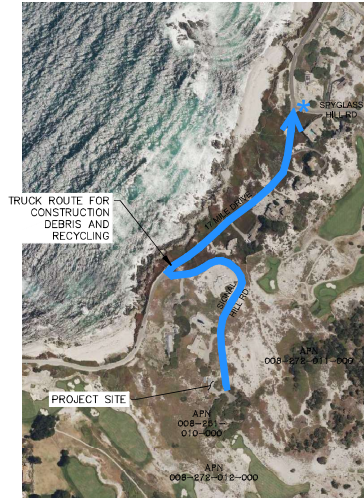
1. DURATION OF CONSTRUCTION IS TO BE DETERMINED. EXACT DURATION WILL BE DETERMINED AT TIME OF BUILDING PERMIT ISSUANCE. ESTIMATED TO BE MARCH 2025 TO MARCH 2027.
2. NOISE-GENERATING CONSTRUCTION ACTIVITIES ARE LIMITED TO THE HOURS BETWEEN 7 A.M. AND 7 P.M. MONDAY THROUGH SATURDAY; NO CONSTRUCTION OPERATIONS ALLOWED ON SUNDAYS OR NATIONAL HOLIDAYS.
3. TRUCKS WILL BE ROUTED TO AND FROM THE SITE USING THE TRUCK ROUTE SHOWN ON THIS SHEET (B)CM1 UNLESS A CLOSER COUNTY APPROVED SITE IS AVAILABLE TO RECEIVE EXPORT AND/OR RECYCLING.
4. THE NUMBER OF WORKERS WILL VARY THROUGH OUT CONSTRUCTION. WORKERS ONSITE WILL RANGE FROM 5 TO 20.
5. EROSION CONTROL PROTECTION TO BE INSTALLED PER THE EROSION CONTROL PLAN (SHEETS C3.0 AND C3.1).
6. STATIONARY NOISE-GENERATING CONSTRUCTION EQUIPMENT AND STAGING AREAS SHALL BE LOCATED AS FAR AWAY AS POSSIBLE FROM RESIDENTIAL RECEIVERS AS POSSIBLE.
7. CONSTRUCTION EQUIPMENT MUST BE PROPERLY MAINTAINED. ALL INTERNAL COMBUSTION ENGINE-DRIVEN EQUIPMENT SHALL BE EQUIPPED WITH WITH INTAKE AND EXHAUST MUFFLERS THAT ARE IN GOOD CONDITION AND APPROPRIATE FOR THE EQUIPMENT.
8. SEE ARCHITECTURAL/LANDSCAPE PLANS AND/OR THE PROJECT ARBORIST'S REPORT FOR TREE PROTECTION AND REMOVAL REQUIREMENTS.

A CONSTRUCTION SITE PLAN
CM1 SCALE: 1"=40'

*** DIRECTIONS**
RIGHT ON SPYGLASS HILL ROAD TO STEVENSON DRIVE TO 17 MILE DRIVE TO NORTHBOND HIGHWAY 1.



B TRUCK ROUTING PLAN
CM1 SCALE: 1"=10,000'



C OVERALL SITE PLAN
CM1 SCALE: 1"=400'