



# TODAY'S ACTION

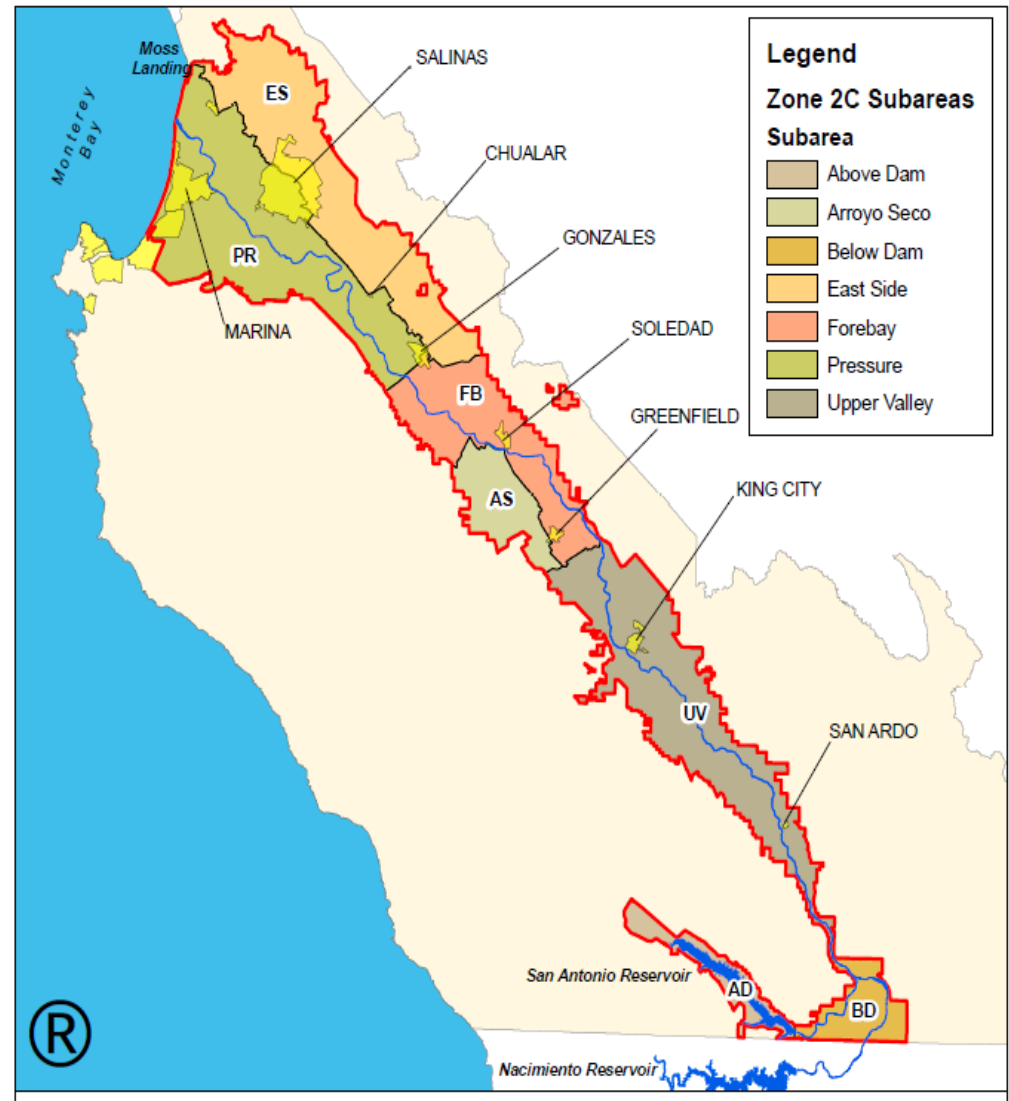
- a. Hold a public hearing to consider approving and adopting Fiscal Year **2026-27 (FY27) assessment** charges with cost-of-living adjustment (COLA) increase of **2.5% for Zone 2C Administration and Operations and Maintenance of Nacimiento and San Antonio Dams**; and
- b. **Adopt a resolution** approving the FY 2026-27 COLA increase of **2.5% to assessment charges of Zone 2C Administration and Operations and Maintenance of Nacimiento and San Antonio Dams.**



# Discussion

- Ordinance No. **4203** :
  - Assessments in **Zone 2C** for the Salinas Valley Water Project (SVWP) to fund **Operations and Maintenance at Nacimiento Dam and San Antonio Dam**.
  - Assessment rates be increased annually as a cost-of-living Adjustment (**COLA**) by the Consumer Price Index (**CPI**) of the **San Francisco Bay Area** measured from **March 1 of each year to March 1** of the next year.
  - COLA adjustments be applied to the Operation and Maintenance and the Administration components **only**.
- On **March 11, 2026**, the U.S. Bureau of Labor Statistics released the February 2026 Consumer Price Index which increased **2.5%** from last year.

# Zone 2C Boundary:



# FY27 Rate : Zone 2C

## Operation & Maintenance

<b>ZONE 2C BENEFIT ASSESSMENTS</b>							
<b>O&amp;M of Nacimiento and San Antonio Dams</b>							
<b>Fiscal Year</b>	<b>2026-2027</b>						
<b>Subarea</b>	<b>Ext. Upper Valley Above Dam</b>	<b>Ext. Upper Valley Below Dam</b>	<b>Upper Valley</b>	<b>Forebay</b>	<b>Pressure</b>	<b>East Side</b>	<b>Arroyo Seco</b>
<b>Factor</b>	<b>Charge Per Acre</b>						
A	12.91	13.87	12.46	12.94	27.32	14.83	4.76
B	12.91	13.86	12.46	12.94	27.32	14.83	4.76
C	1.25	1.40	1.23	1.25	2.67	1.50	0.47
D	0.13	0.17	0.13	0.13	0.25	0.17	0.05
I	-	-	-	-	-	-	-
A = Irrigated Agriculture							
B = Residential (1-4 units), Apartments (over 4 units), Commercial, Institutional Land							
C = Dry Farming, Grazing, Vacant Lot							
D = River Channels and Lands with Frequent Flooding							
I = Land receiving no charge							



# FY27 Rate : Zone 2C Administration

<b>ZONE 2C BENEFIT ASSESSMENTS</b>							
<b>Administration</b>							
Fiscal Year	2026-2027						
Subarea	Ext. Upper Valley Above Dam	Ext. Upper Valley Below Dam	Upper Valley	Forebay	Pressure	East Side	Arroyo Seco
Factor	Charge Per Acre						
A	1.90	1.90	1.90	1.90	1.90	1.90	1.90
B	1.90	1.90	1.90	1.90	1.90	1.90	1.90
C	0.15	0.15	0.15	0.15	0.15	0.15	0.15
D	-	-	-	-	-	-	-
I	-	-	-	-	-	-	-
A = Irrigated Agriculture							
B = Residential (1-4 units), Apartments (over 4 units), Commercial, Institutional Land							
C = Dry Farming, Grazing, Vacant Lot							
D = River Channels and Lands with Frequent Flooding							
I = Land receiving no charge							



# FY27 Rate : Zone 2C

## Spillway Modification

ZONE 2C BENEFIT ASSESSMENTS							
Nacimiento Spillway Modification ( <u>NO COLA</u> )							
Fiscal Year	2026-2027						
Subarea	Ext. Upper Valley Above Dam	Ext. Upper Valley Below Dam	Upper Valley	Forebay	Pressure	East Side	Arroyo Seco
Factor	Charge Per Acre						
A	1.82	1.28	1.04	1.14	2.86	2.18	0.46
B	1.82	1.28	1.04	1.14	2.86	2.18	0.46
C	0.18	0.12	0.10	0.10	0.28	0.22	0.04
D	0.02	-	-	-	0.02	0.02	-
A = Irrigated Agriculture							
B = Residential (1-4 units), Apartments (over 4 units), Commercial, Institutional Land							
C = Dry Farming, Grazing, Vacant Lot							
D = River Channels and Lands with Frequent Flooding							



# FY27 Rate : Zone 2C

## Diversion Facility Construction

ZONE 2C BENEFIT ASSESSMENTS							
Diversion Facility Construction ( <u>NO COLA</u> )							
Fiscal Year	2026-2027						
Subarea	Ext. Upper Valley Above Dam	Ext. Upper Valley Below Dam	Upper Valley	Forebay	Pressure	East Side	Arroyo Seco
Factor	Charge Per Acre						
A	-	-	-	-	6.18	5.14	-
B	-	-	-	-	6.18	5.14	-
C	-	-	-	-	0.62	0.52	-
D	-	-	-	-	0.06	0.04	-
A = Irrigated Agriculture							
B = Residential (1-4 units), Apartments (over 4 units), Commercial, Institutional Land							
C = Dry Farming, Grazing, Vacant Lot							
D = River Channels and Lands with Frequent Flooding							



# FY27 Budget: Fund 1503 Dam Operations

REVENUES	AMOUNT
AD VALOREM TAXES	-
SPECIAL ASSESSMENTS	4,616,155
PROGRAM REVENUE - (GMP, BDA, LU)	654,196
GRANTS - LOCAL, STATE AND FEDERAL	7,214,787
SLO COUNTY REIMBURSEMENT	680,000
INTERESTS AND OTHER INCOME	76,625
AGENCY & COUNTY INTERFUND TRANSFERS*	700,000
<b>TOTAL REVENUES</b>	<b>13,941,763</b>

EXPENSES	AMOUNT
EMPLOYEE COST - SALARIES AND BENEFITS	4,298,010
GL & POLLUTION INSURANCES	587,346
SERVICE CHARGES - COUNTY DEPARTMENTS	739,427
CONTRACTORS/CONSULTANTS	829,896
CONTRACTORS/CONSULTANTS - GRANT FUNDED	6,710,000
EQUIPMENT & VEHICLES	579,712
SERVICES & SUPPLIES - EXTERNAL	858,221
FUND TRANSFER OUT	-
DEBT PAYMENTS (SVWP, CSIP, SVRP)	-
<b>TOTAL EXPENDITURES</b>	<b>14,602,612</b>

IMPACT TO FUND BALANCE	(660,849)
------------------------	-----------

ESTIMATED BEGINNING FUND BALANCE	2,734,104
ESTIMATED ENDING FUND BALANCE	2,073,255

## Zone 2C Assessments

### Grants:

- ✓ FIRO, Flood Map & IRWMP
- ✓ Naci Maintenance grant \$.97M
  - Plunge Pool
  - LLO bypass
- ✓ SB 104 \$5.4M
  - Naci Road & Bridge Repair
  - Naci High-level gate
  - SAD Buoy line
  - SAD 12' drain
  - SAD LLO designs
  - SAD Spillway replacement project
- \$700K transfer from Fund 1508 (130)
- Boat Dock Program
- Land Management
- Old Salinas River Management
- Facility Equipment & Repairs
- Naci South Access Road Repair
- Naci spillway inspection & maintenance