

Attachment B



Monterey County - Sign Management Plan

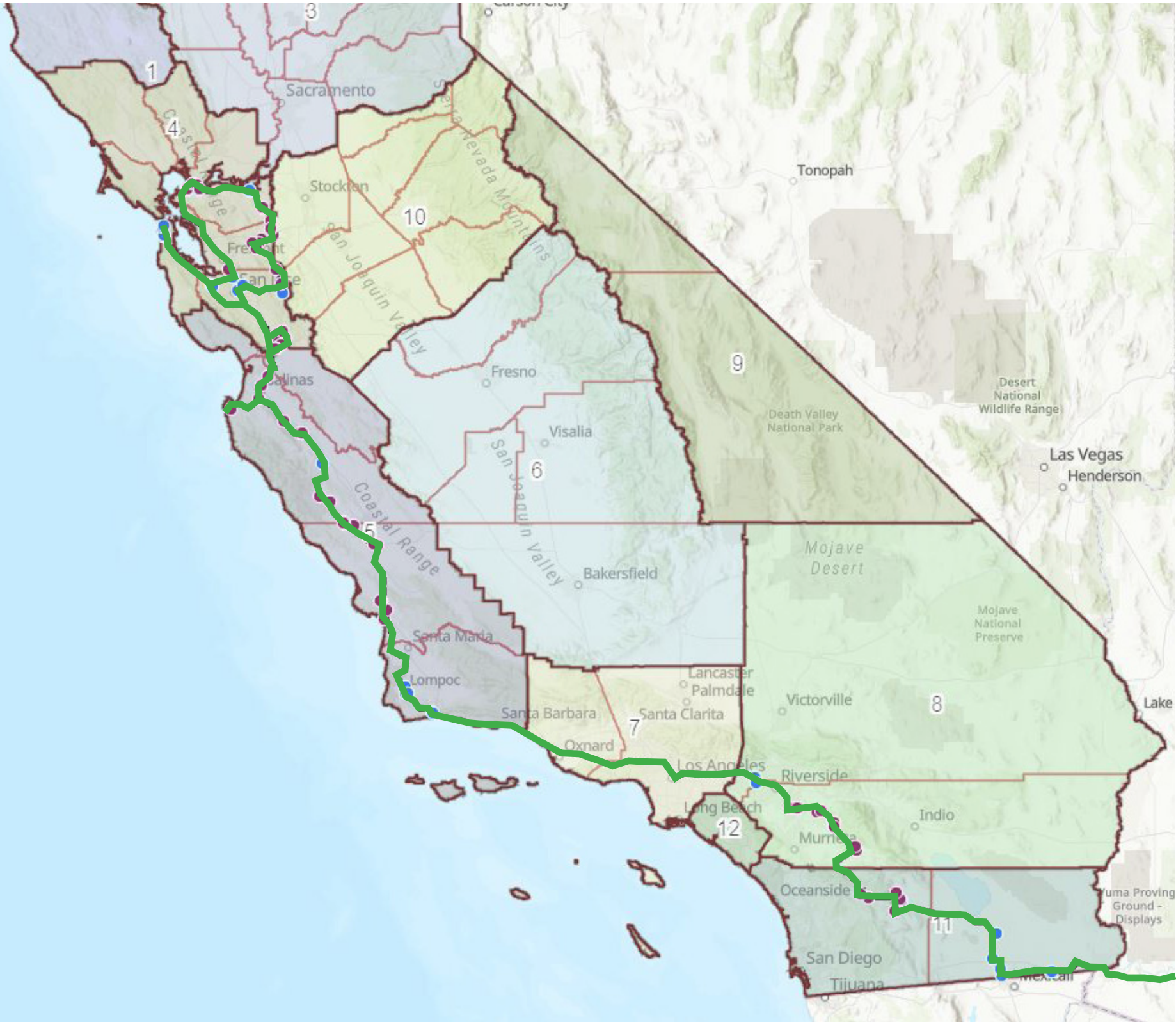
Prepared for County of Monterey Review

*by the
National Park Service
Denver Service Center - Transportation Division*

May 6th, 2025

Contents

- Sign Management Plan
- Overview Map
- Map Sheet Index Monterey County (Maps A - G)
- Maps A - G



Caltrans District 5 - Overview Map

Caltrans District 5

***19 qty. Juan Bautista de Anza
National Historic Trail Sign***

City of San Luis Obispo

***6 qty. Juan Bautista de Anza National
Historic Trail Sign***

City of Paso Robles

***1 qty. Juan Bautista de Anza National
Historic Trail Sign***

County of San Luis Obispo

***5 qty. Juan Bautista de Anza National
Historic Trail Sign***

County of Monterey

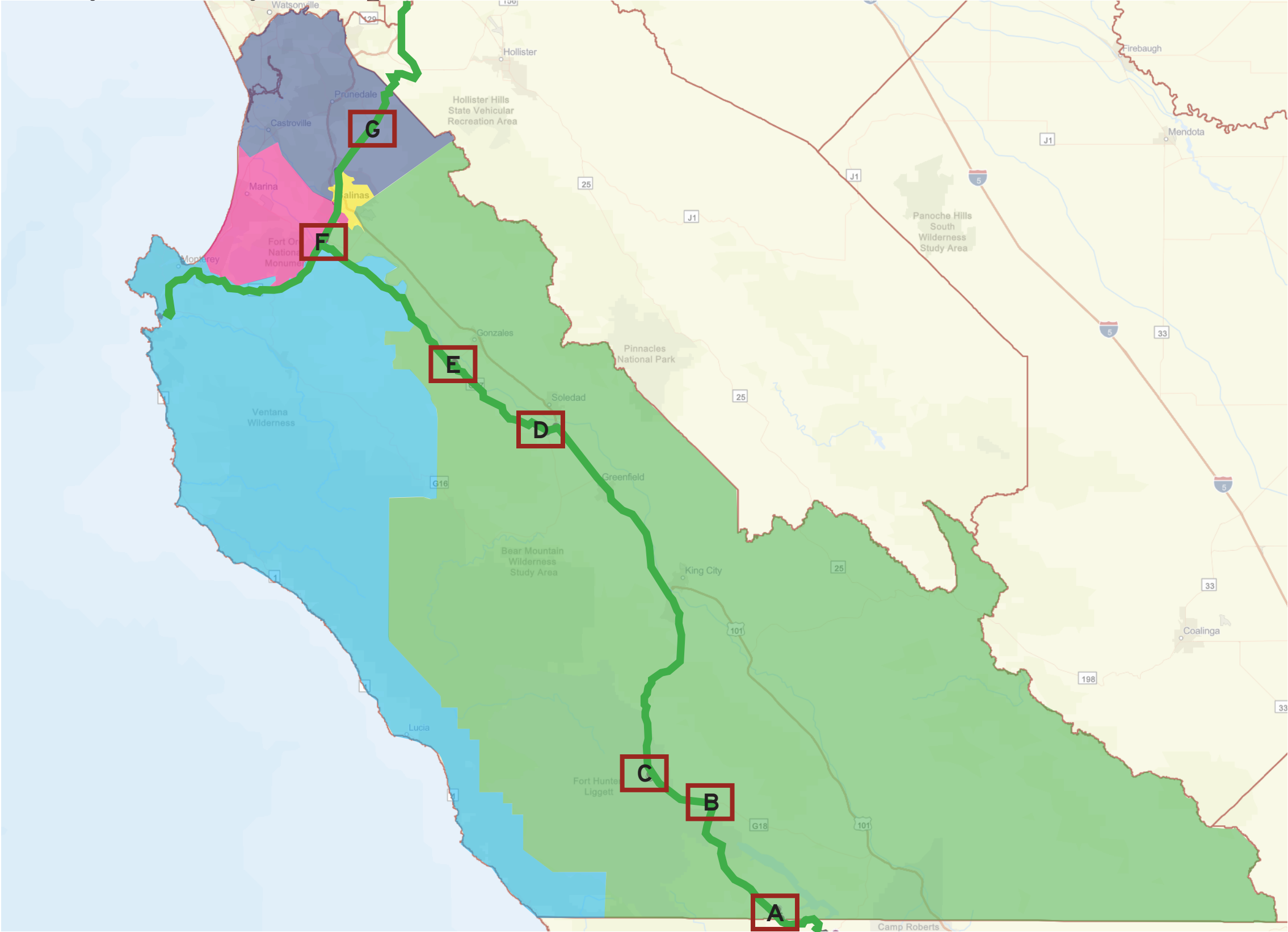
***14 qty. Juan Bautista de Anza
National Historic Trail Sign***



No warranty is made by the National Park Service as to the accuracy, reliability, or completeness of these data for individual use or aggregate use with other data.



Monterey County- Map Sheet Index



- Monterey County District 1
- Monterey County District 2
- Monterey County District 3
- Monterey County District 4
- Monterey County District 5



Monterey County - Map: A



Previous JUBA Sign COM_001



Missing JUBA Sign COM_002



Previous JUBA Sign COM_003

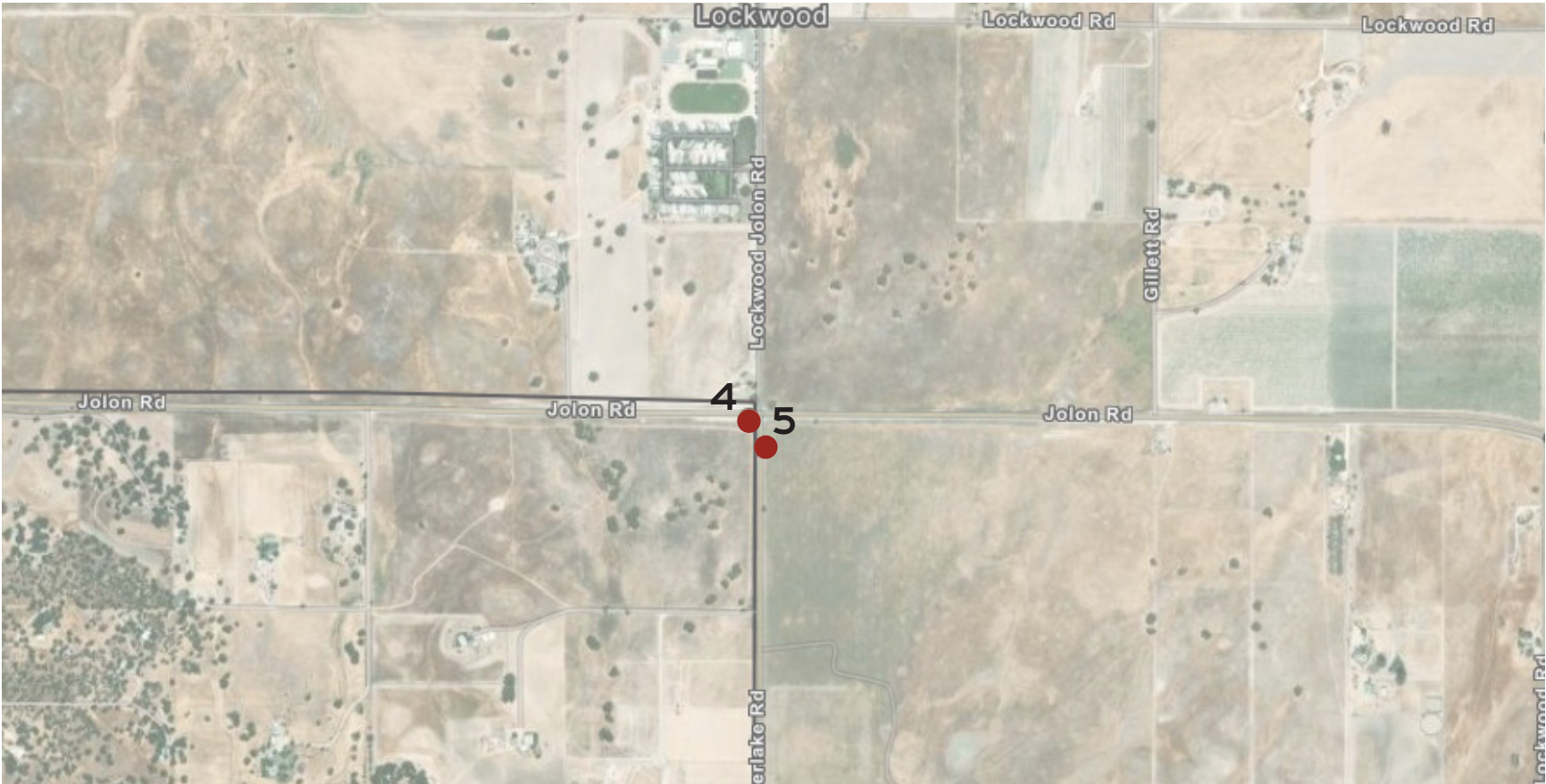
Sign ID	County District	Sign Type*	Arrow*	Road Name	Direction	Travel	Longitude	Latitude
COM_001	3	Historic Route	Straight M6-3	County Hwy G14 Interlake Rd	Northbound	Stay straight on Interlake Rd	-120.97408	35.79279
COM_002	3	Historic Route	Left	San Antonio Rd	Southbound	Left turn for southbound travel on County Hwy G14 Interlake Rd	-120.97907	35.80503
COM_003	3	Historic Route	Straight M6-3	County Hwy G14 Interlake Rd	Southbound	Stay straight on Interlake Rd	-120.97982	35.80473

*Refer to Juan Bautista de Anza National Historic Trail Sign Standards

No warranty is made by the National Park Service as to the accuracy, reliability, or completeness of these data for individual use or aggregate use with other data.



Monterey County- Map: B



Previous JUBA Sign COM_004



Previous JUBA sign COM_005

Sign ID	County District	Sign Type*	Arrow*	Road Name	Direction	Travel	Longitude	Latitude
COM_004	3	Historic Route	Left	County Hwy G14 Interlake Rd	Northbound	Left turn for westbound travel onto G14 Jolon Rd	-121.08203	35.93618
COM_005	3	Historic Route	Right	County Hwy G14 Jolon Rd	Eastbound	Right turn for southbound travel onto G14 Interlake Rd	-121.08237	35.93669

*Refer to Juan Bautista de Anza National Historic Trail Sign Standards

No warranty is made by the National Park Service as to the accuracy, reliability, or completeness of these data for individual use or aggregate use with other data.



Monterey County - Map: C



Previous JUBA sign COM_006



Previous JUBA sign COM_007

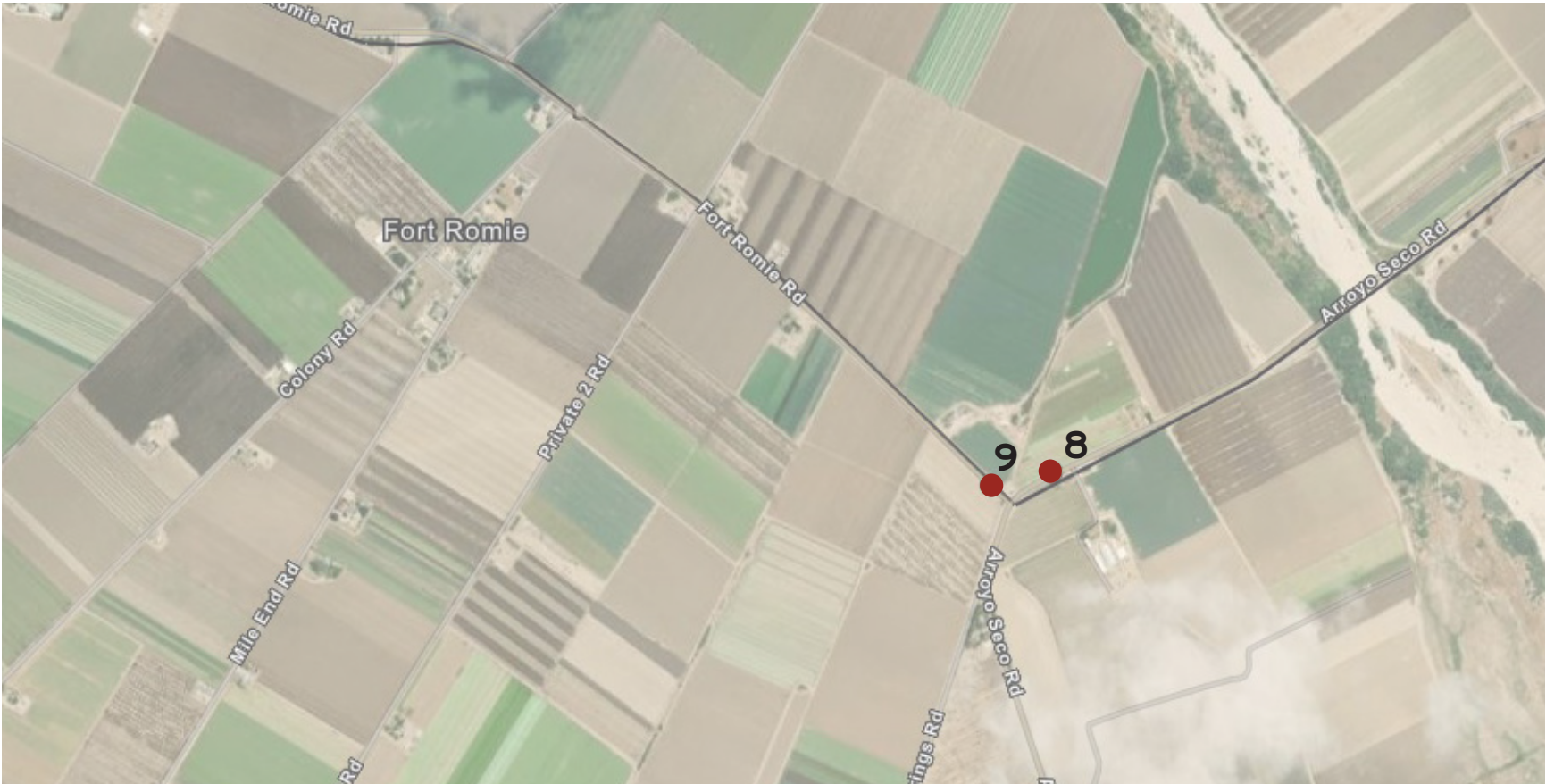
Sign ID	County District	Sign Type*	Arrow*	Road Name	Direction	Travel	Longitude	Latitude
COM_006	3	Historic Route	Straight M6-3	County Hwy G14 Jolon Rd	Northbound	Stay straight on Jolon Rd	-121.17586	35.96851
COM_007	3	Historic Route	Straight M6-3	County Hwy G14 Jolon Rd	Southbound	Stay straight on Jolon Rd	-121.17638	35.97046

*Refer to Juan Bautista de Anza National Historic Trail Sign Standards

No warranty is made by the National Park Service as to the accuracy, reliability, or completeness of these data for individual use or aggregate use with other data.



Monterey County - Map: D



Previous JUBA sign COM_008



Previous JUBA sign COM_009

Sign ID	County District	Sign Type*	Arrow*	Road Name	Direction	Travel	Longitude	Latitude
COM_008	3	Historic Route	Right	Arroyo Seco Rd	Westbound	Right turn for northbound travel to Conty Hwy G17 Fort Romie Rd	-121.33246	36.39580
COM_009	3	Historic Route	Left	Conty Hwy G17 Fort Romie Rd	Southbound	Left turn for eastbound travel to Arroyo Seco Rd	-121.33386	36.39554

*Refer to Juan Bautista de Anza National Historic Trail Sign Standards

No warranty is made by the National Park Service as to the accuracy, reliability, or completeness of these data for individual use or aggregate use with other data.



Monterey County - Map: E



Missing JUBA sign COM_010



Previous JUBA sign COM_011

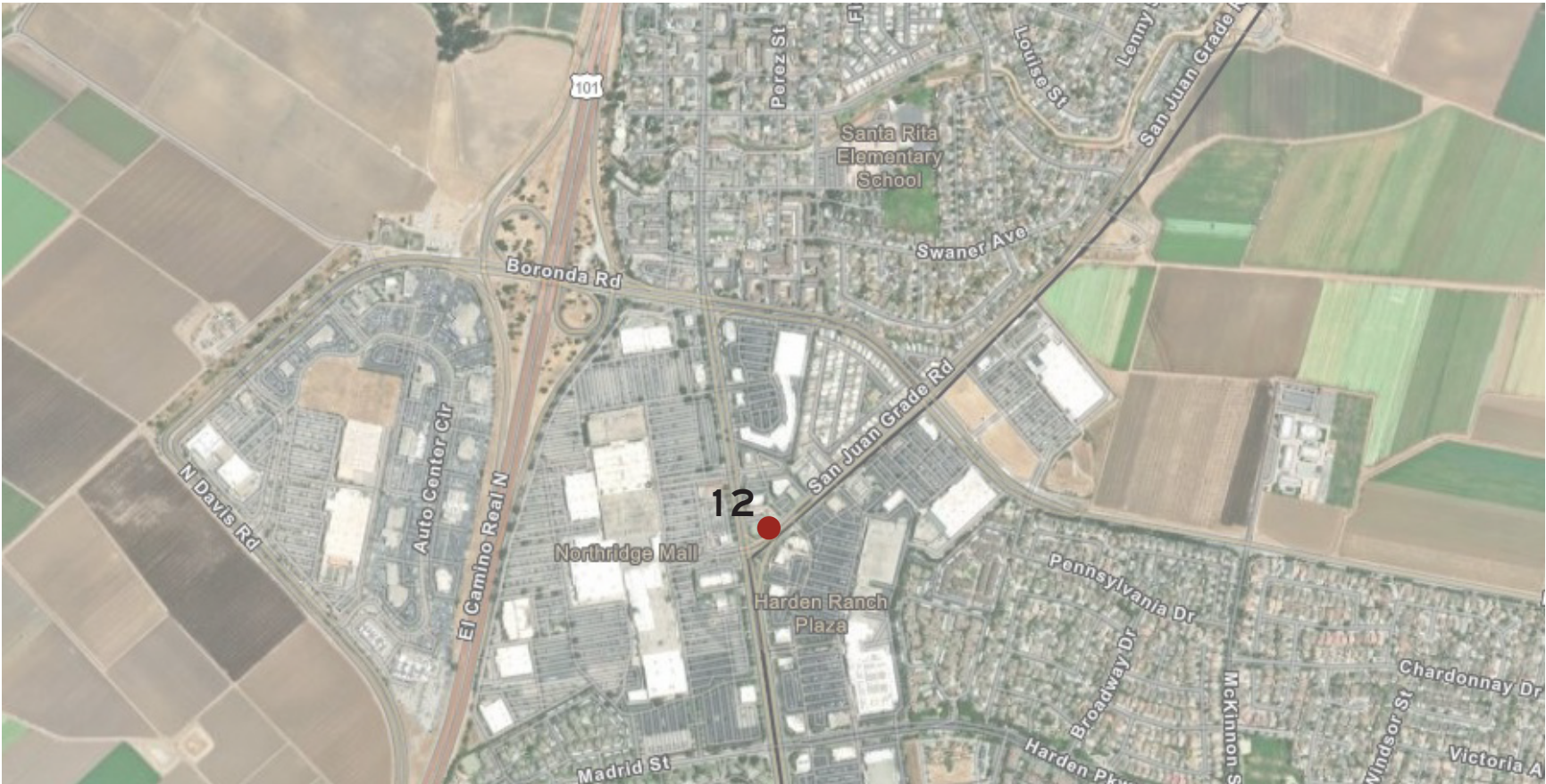
Sign ID	County District	Sign Type*	Arrow*	Road Name	Direction	Travel	Longitude	Latitude
COM_010	3	Historic Route	Left	Conty Hwy G17 Fort River Rd	Northbound	Left turn for westbound travel to stay on G17 River Rd	-121.47415	36.48038
COM_011	3	Historic Route	Right	Conty Hwy G17 Fort River Rd	Eastbound	Right turn for southbound travel on G17 River Rd	-121.47491	36.48072

*Refer to Juan Bautista de Anza National Historic Trail Sign Standards

No warranty is made by the National Park Service as to the accuracy, reliability, or completeness of these data for individual use or aggregate use with other data.



Monterey County - Map F



Previous JUBA sign COM_012

Sign ID	County District	Sign Type*	Arrow*	Road Name	Direction	Travel	Longitude	Latitude
COM_012	5	Historic Route	Left	Conty Hwy G17 Fort River Rd	Northbound	Left turn for westbound travel ramp onto SR 68	-121.68187	36.62516

*Refer to Juan Bautista de Anza National Historic Trail Sign Standards

No warranty is made by the National Park Service as to the accuracy, reliability, or completeness of these data for individual use or aggregate use with other data.



Monterey County - Map G



Previous JUBA sign COM_013



Missing JUBA sign COM_014

Sign ID	County District	Sign Type*	Arrow*	Road Name	Direction	Travel	Longitude	Latitude
COM_013	2	Historic Route	Right	Crazy Horse Canyon Rd	Northbound	Right turn for northbound travel onto San Juan Grade Rd	-121.60307	36.77326
COM_014	2	Historic Route	Right	Crazy Horse Canyon Rd	Southbound	Right turn for southbound travel onto San Juan Grade Rd	-121.60346	36.77391

*Refer to Juan Bautista de Anza National Historic Trail Sign Standards

No warranty is made by the National Park Service as to the accuracy, reliability, or completeness of these data for individual use or aggregate use with other data.