

Attachment F

This page intentionally left blank.



DMC Commercial, Inc
194 Sky Park Drive
Monterey CA 93940
831.656.1600 (office)
831.717.4315 (fax)
License #822797

June 25, 2026

Via Email

Andrei F. Petrutiu

Public Works, Facilities & Parks

County of Monterey

1441 Schilling Place South, Second Floor

Salinas, California 93901

petrutia@countyofmonterey.gov

Re: East Garrison Library Project – Bid No. 4112

DMC Commercial, Inc.'s Response to Avila Construction Company Bid Protest (Items 1–4 Only)

Dear Mr. Petrutiu:

DMC Commercial, Inc. (“DMC”) respectfully submits this response to the June 23, 2026, bid protest filed by Avila Construction Company (“Avila”) in connection with the East Garrison Library Project (“Project”). This response is limited to the allegations directed at DMC in Items 1 through 4 of Avila’s protest letter.

For the reasons set forth below, Avila’s protest does not establish any material defect in DMC’s bid and does not provide a lawful basis to reject DMC as the apparent low bidder. DMC’s bid was responsive, complete, and fully bound DMC to furnish the Project in accordance with the plans, specifications, addenda, and all applicable public contracting requirements. At most, the protest raises issues that are either factually incorrect, based on an incomplete reading of the contract documents, or concern matters that do not render DMC’s bid nonresponsive under California law.

California competitive bidding law does not require rejection of a low bid for every alleged irregularity. Rather, the relevant inquiry is whether the challenged issue constitutes a material variance affecting price, quality, quantity, or the competitive position of bidders, or whether it

otherwise deprives the County of the assurance that the bidder will perform the work as bid. Here, none of the allegations raised by Avila establish a material variance, a failure to commit to the required scope, or any unlawful post-bid competitive advantage. DMC remains fully obligated to perform the Project for the amount bid and is fully capable of doing so.



DMC Commercial, Inc
194 Sky Park Drive
Monterey CA 93940
831.656.1600 (office)
831.717.4315 (fax)
License #822797

I. ITEM 1 – HEAVY TIMBER / NEW ENERGY WORKS DIR REGISTRATION

Avila contends that DMC listed New Energy Works for the heavy timber scope even though New Energy Works allegedly was not registered with the California Department of Industrial Relations (“DIR”) at the time of bid. This allegation does not render DMC’s bid nonresponsive.

To the extent Avila is asserting that the listed subcontractor’s DIR public works registration was not active or required updating at the precise time of bid, any such issue was resolved prior to contract award and prior to the performance of any public works labor on the Project. DMC remains fully responsible for ensuring that all subcontractors performing public works labor on the Project are properly registered and compliant before commencing performance. See Exhibit A.

The County therefore faces no present DIR compliance deficiency affecting its ability to award the contract or DMC’s ability to lawfully perform the work. More importantly, the issue raised by Avila does not affect DMC’s bid amount, does not create any uncertainty as to DMC’s obligation to furnish the heavy timber scope, and did not afford DMC any improper competitive advantage. DMC’s bid fixed DMC’s contractual obligation to complete the Project for the amount bid, including the heavy timber work. There is no basis to conclude that the alleged registration timing issue changed DMC’s price, altered DMC’s commitment to perform, or compromised the integrity of the bidding process.

For those reasons, Item 1 does not provide a basis to deem DMC’s bid nonresponsive or to reject DMC’s bid.

II. ITEM 2 – ACOUSTICAL / T-BAR CEILING LISTING

Avila next contends that DMC listed two subcontractors for the same scope of work—acoustical and t-bar ceilings—and therefore violated Public Contract Code section 4106. That contention mischaracterizes the work reflected in the Project documents and DMC’s subcontractor listing.

The plans and scope allocations identify distinct ceiling-related work components. On Sheet A800, Detail 11 is identified as “Suspended Acoustic Panel Ceiling Assembly,” while Detail 12 is identified separately as “Suspended Gypsum Board Ceiling Assembly.” See Exhibit B. DMC’s scope allocation tracked those separate work components and the corresponding bid structure. As relevant here, the California Acoustic portion of work associated with the acoustical ceiling scope falls below the statutory listing threshold of one-half of one percent (0.5%) of DMC’s total



DMC Commercial, Inc
194 Sky Park Drive
Monterey CA 93940
831.656.1600 (office)
831.717.4315 (fax)
License #822797

bid, while the separate suspended gypsum board ceiling scope was allocated to South County. See Exhibit C.

These are not duplicate listings for the same subcontracted scope above the listing threshold. Rather, they are separate scope allocations corresponding to distinct portions of the ceiling work reflected in the contract documents and DMC's bid packaging. Avila's assertion that DMC improperly listed two subcontractors for the same scope is therefore incorrect.

Further, even if the County were to conclude that any overlap exists in the way the work was described, such circumstance would not render DMC's bid nonresponsive. DMC is fully licensed, fully bound to perform the complete scope of the Project, and fully capable of self-performing any portion of the work that the County determines must be performed by DMC directly. The County therefore remains fully protected, and there is no basis to reject DMC's bid on this ground.

III. ITEM 3 – COAST COUNTIES GLASS / DOORS-WINDOWS INSTALLATION

Avila argues that DMC listed Coast Counties Glass for the doors/windows scope even though Coast Counties Glass allegedly quoted material supply only and did not include installation. Even assuming Avila's characterization of Coast Counties Glass's proposal is accurate, this allegation does not render DMC's bid incomplete or nonresponsive.

To the extent the subcontractor listing for that line item identified a supplier rather than the installation performer, that listing issue does not create a material omission in DMC's bid because DMC, as the prime contractor and holder of California Class A and Class B contractor licenses, included and will self-perform the installation scope for the windows and doors. DMC budgeted and carried installation labor within its bid and remains fully responsible for furnishing and installing the windows and doors in accordance with the contract documents. See Exhibit H.

Thus, there is no gap in DMC's bid scope, no uncertainty regarding who will perform the installation work, and no basis to conclude that DMC omitted the required work from its bid. DMC remains contractually obligated to furnish and install the doors and windows in accordance with the contract documents for the amount bid. The County therefore receives exactly what the bid requires, and the competitive bidding process is not compromised.

At most, Avila identifies a listing irregularity in the designation of a supplier versus installer. That type of issue does not rise to the level of a material variance requiring rejection of the low bid



DMC Commercial, Inc
194 Sky Park Drive
Monterey CA 93940
831.656.1600 (office)
831.717.4315 (fax)
License #822797

where, as here, the prime contractor is duly licensed, has included the work in its bid, and remains fully bound to self-perform the installation scope.

IV. ITEM 4 – ACCESS CONTROLS AND SITE ELECTRICAL

Avila contends that DMC failed to list subcontractors for access controls and site electrical and therefore submitted an incomplete bid. That allegation is factually incorrect and rests on an incomplete reading of the plans, addenda, and scope allocations reflected in DMC's bid.

A. Access Controls

The Project documents, including Addendum No. 3 and updated Sheet E401, establish that DMC did not omit access-control-related work from its bid. In response to bidder Question No. 7, the County clarified that Divisions 27 and 28 were excluded from the bid package, but further clarified that the General Contractor's telecommunications/data low-voltage scope remained limited to conduit pathways, pull strings, mud rings, and related pathway work, and that all other low-voltage systems indicated on the drawings, including security/access control and intrusion detection, remained within the GC's scope of work. See Exhibit F.

In response to bidder Question No. 29 regarding doors noted to have electrified hardware, the County further directed bidders to the updated Delta 3 and 4 drawings, specifically Sheet E401, for clarification regarding access controls. See Exhibit E. Updated Sheet E401 expressly includes Note 30, which states: "Locate for card reader. Provide and install 3/4" conduit." See Exhibit D. Accordingly, the contract documents did not omit access-control-related work; they clarified that the applicable work to be carried by the GC included the required electrical/low-voltage infrastructure associated with those systems, including conduit pathways and related work shown on E401.

DMC priced and included that work in its bid and assigned it within its electrical/low-voltage scope consistent with the plans and addenda. Avila's suggestion that DMC omitted access controls from its bid is therefore incorrect.

B. Site Electrical

Avila's assertion that DMC failed to list a subcontractor for site electrical is likewise incorrect. The applicable site electrical scope was included within JM Electric's scope to the extent of electrical site work, including pull boxes and related electrical components, and DMC separately included



DMC Commercial, Inc
194 Sky Park Drive
Monterey CA 93940
831.656.1600 (office)
831.717.4315 (fax)
License #822797

trenching and associated civil excavation work as part of its own self-performed scope as a California licensed Class A and Class B prime contractor. See Exhibits G and H.

Nothing in the Public Contract Code prohibits a prime contractor from self-performing portions of the work it is licensed to perform, nor does the Code require a bidder to list a subcontractor for work that the prime contractor will lawfully perform itself. Here, DMC's bid included the work, priced the work, and committed DMC to complete the work. There was therefore no omission, no unresolved scope gap, and no post-bid opportunity for DMC to shop the work in a manner that would undermine the integrity of the competitive bidding process.

C. No Material Omission and No Competitive Advantage

The central flaw in Avila's Item 4 argument is that it assumes any scope not listed under a separate subcontractor heading was omitted from DMC's bid. That is incorrect. DMC's bid includes the full work of the Project. The access control and site electrical components identified by Avila were either included within the scope of DMC's listed subcontractors, included within DMC's own self-performed scope, or both, depending on the particular work item and the allocation reflected in the plans and addenda. See Exhibits D through H.

Because the work was included in DMC's bid and DMC remains fully bound to perform it for the amount bid, there is no material omission and no basis to deem DMC's bid nonresponsive.

V. CONCLUSION

Avila's protest does not establish any material defect in DMC's bid. The allegations raised in Items 1 through 4 either (1) misstate the underlying facts, (2) disregards the actual allocation of work reflected in the plans, specifications, and addenda, or (3) concerns non-material matters that do not affect DMC's bid responsiveness, DMC's obligation to perform the Project as bid, or the fairness of the competitive bidding process.

DMC submitted the lowest bid, remains a responsive and responsible bidder, and is fully prepared to perform the Project in accordance with the contract documents and all applicable public works requirements. DMC therefore respectfully requests that the County deny Avila's protest as it pertains to DMC and proceed with award of the Project to DMC Commercial, Inc.



DMC Commercial, Inc
194 Sky Park Drive
Monterey CA 93940
831.656.1600 (office)
831.717.4315 (fax)
License #822797

Should the County wish to review any supplemental backup concerning subcontractor scope allocation, plan references, addenda interpretation, current DIR registration status, or DMC's self-performed scope, DMC is prepared to provide such information promptly.

Respectfully submitted,

DMC COMMERCIAL, INC.

Dan J. McAweeney
President & Secretary
June 25, 2026

See enclosures: Appendix: Supporting Documentation to Bid Protest



DMC Commercial, Inc
194 Sky Park Drive
Monterey CA 93940
831.656.1600 (office)
831.717.4315 (fax)
License #822797

Appendix of Supporting Documents

DMC submits the following supporting materials in connection with this response to Avila Construction Company's bid protest:

Exhibit A – California Department of Industrial Relations Public Works Contractor Registration proof for New Energy Works of Oregon / Sockeye Timberframing LLC, reflecting DIR approval and registration prior to contract award.

Exhibit B – Plan Sheet A800, East Garrison Library, identifying Detail 11 – Suspended Acoustic Panel Ceiling Assembly and Detail 12 – Suspended Gypsum Board Ceiling Assembly, supporting DMC's scope allocation between California Acoustic and South County and confirming that the cited work concerns distinct ceiling scope components.

Exhibit C – Scope backup and proposal support for California Acoustic and South County, with bid pricing redacted, demonstrating DMC's allocation of the acoustical ceiling and gypsum board ceiling work and confirming that the California Acoustic portion falls below the subcontractor listing threshold while the remaining ceiling scope is assigned separately.

Exhibit D – Plan Sheet E401 – Power & Systems Plan, including electrical note references relevant to access control conduit pathways and associated electrical/low-voltage scope, including Note 30 regarding card reader conduit.

Exhibit E – Addendum No. 3, Question No. 29, directing bidders to updated Sheet E401 for clarification regarding access controls at doors with electrified hardware.

Exhibit F – Addendum No. 3, Question No. 7 Response, confirming that Divisions 27 and 28 are excluded except as specifically stated, clarifying the GC telecommunications/data low-voltage pathway scope, and further confirming that security/access control and intrusion detection remain within the GC's scope of work.

Exhibit G – Email and/or scope confirmation from JM Electric confirming inclusion of applicable site electrical work, including pull boxes and related electrical scope associated with the Project site work.

Exhibit H – DMC bid backup and scope allocation materials showing that the disputed work was included in DMC's bid price, including DMC's self-performed trenching and installation-related work as a California licensed Class A and Class B prime contractor.



- [Home](#)
- [How-To Guides](#)
- [Search](#) ▼
- [Sign up](#)
- [Log in](#)

[Home](#) > [Contractors](#)

Contractor Filters

[All Contractors](#)

[Name is not Empty](#)

[Updated This Week](#)

☰ Contractors

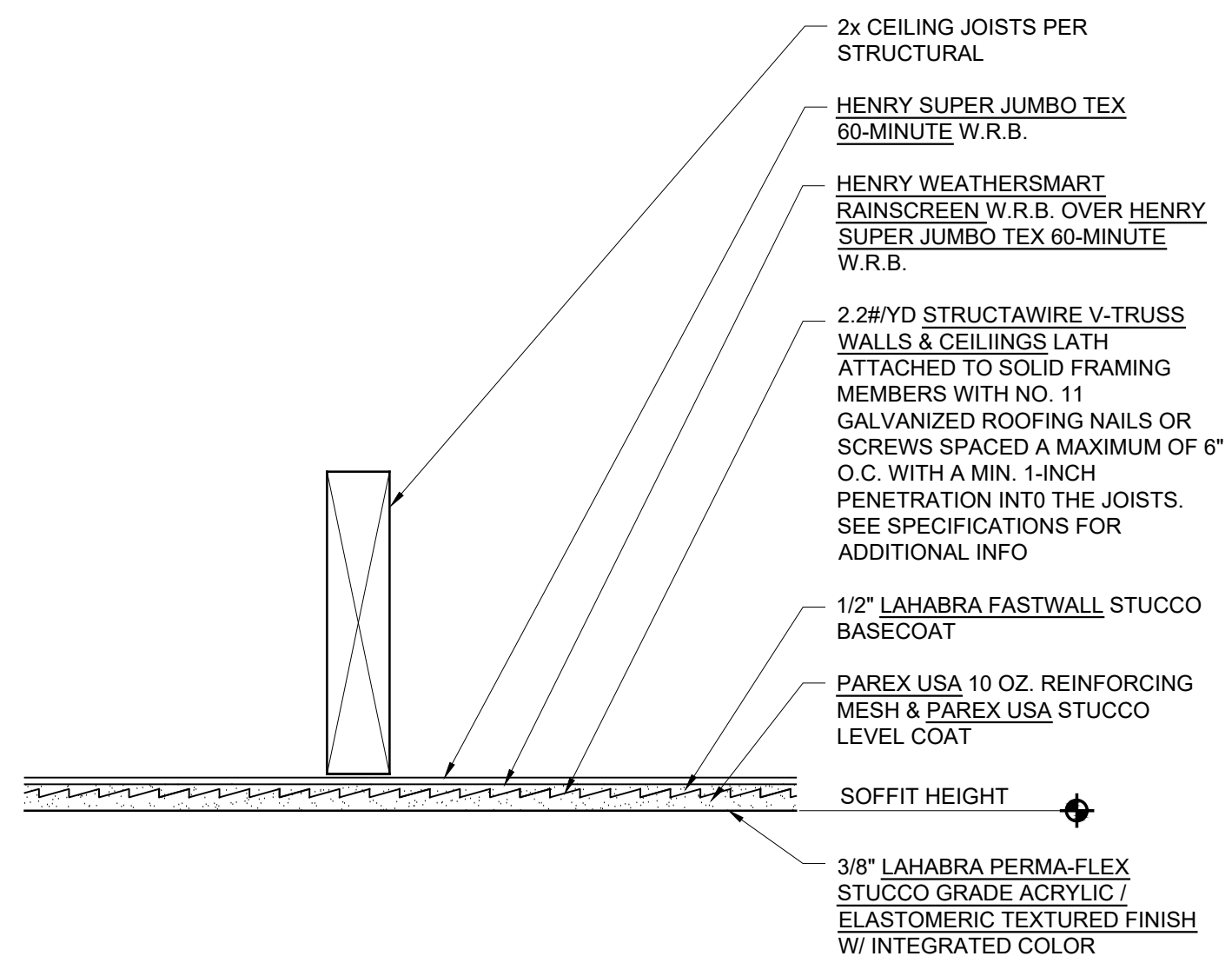


Results for: 2000027246

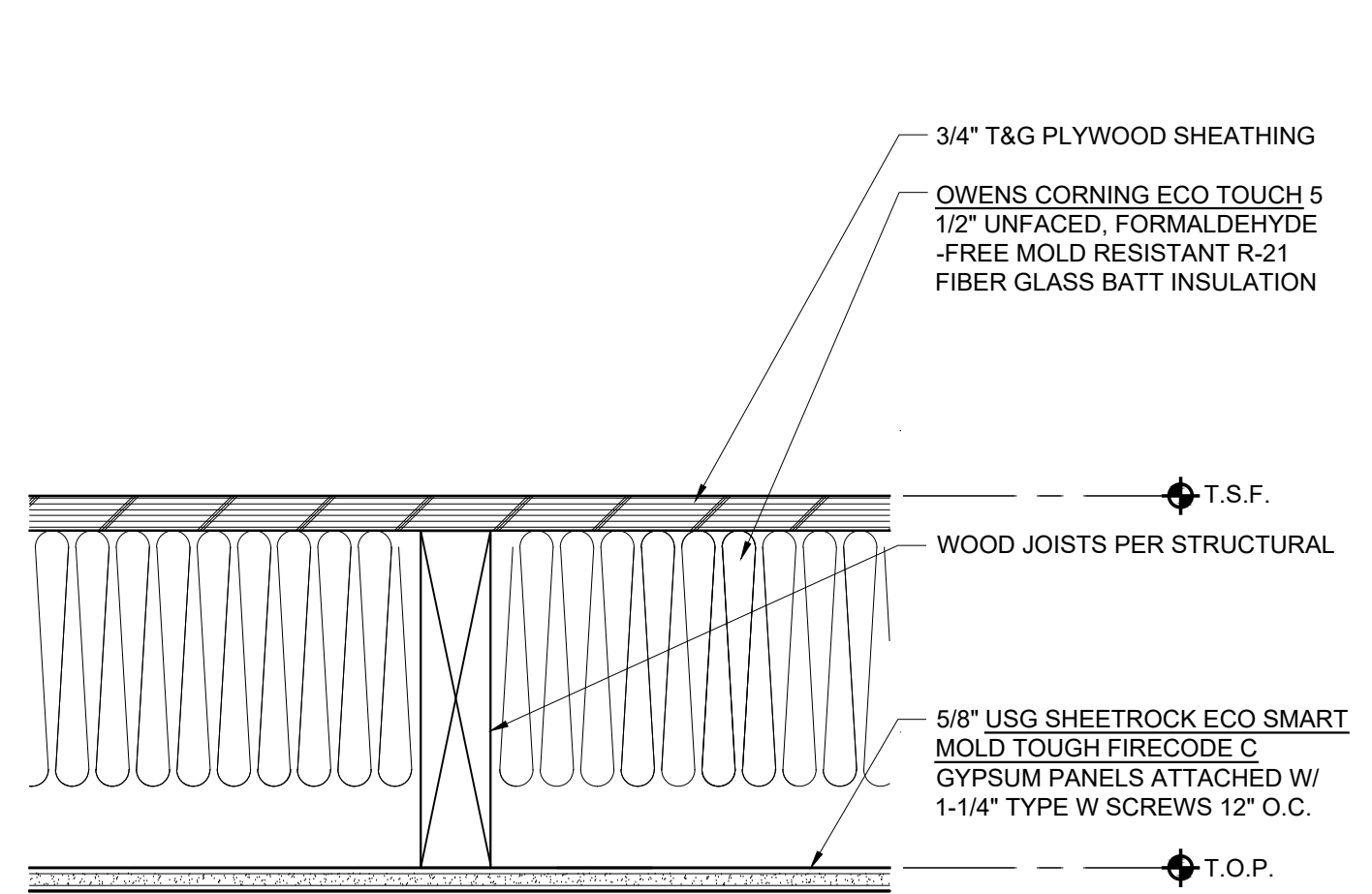
PWCR	Legal Entity Name ▲	Doing Business As (DBA)	Business Structure	Contractor Status	CSLB	Registration Start Date	Registration End Date
2000027246	Sockeye Timberframing LLC	New Energy Works of Oregon	Limited Liability Company (LLC)	DIR Approved	1033771	2026-06-24	2026-06-30

Rows 1 - 1 of 1

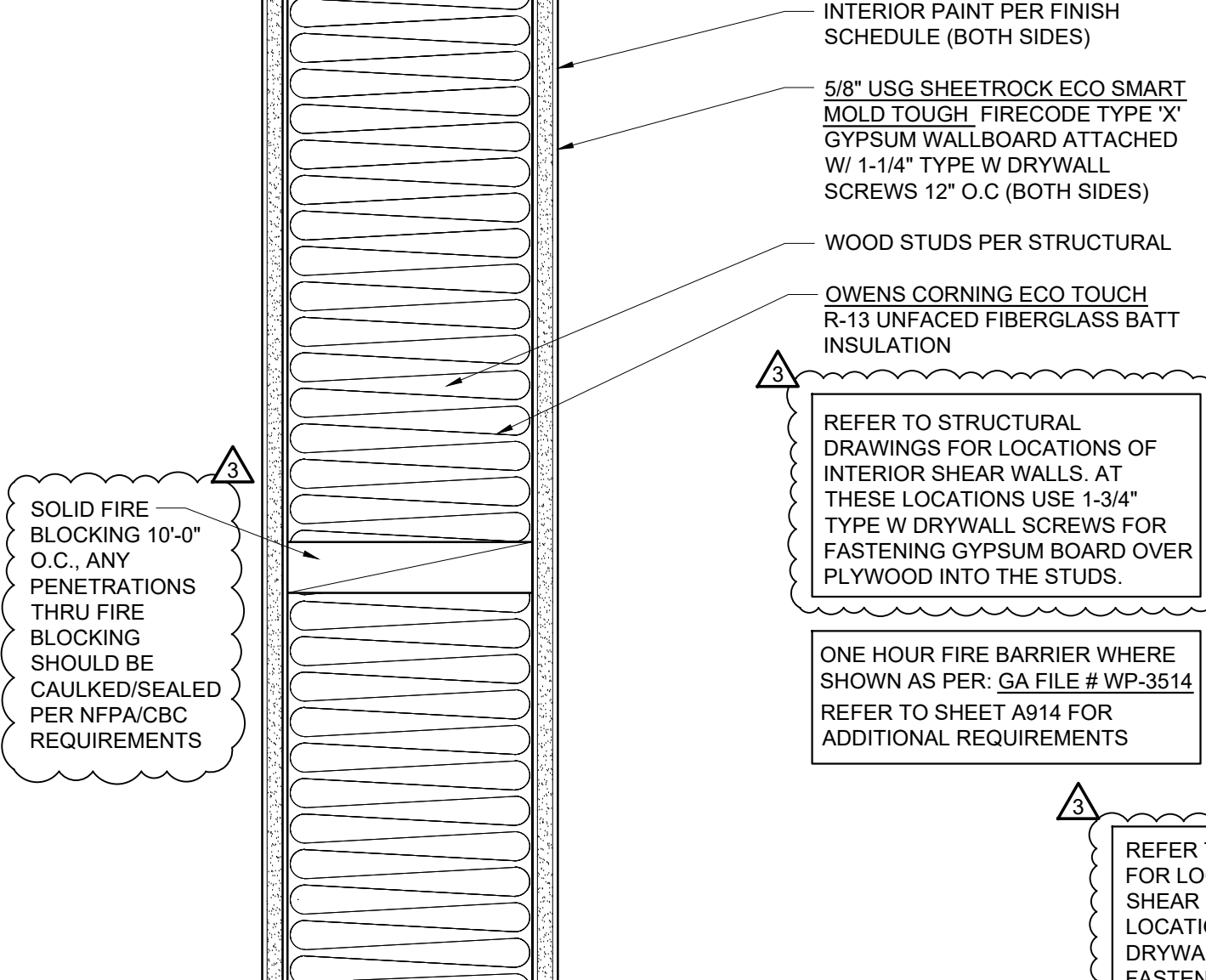
EXHIBIT B



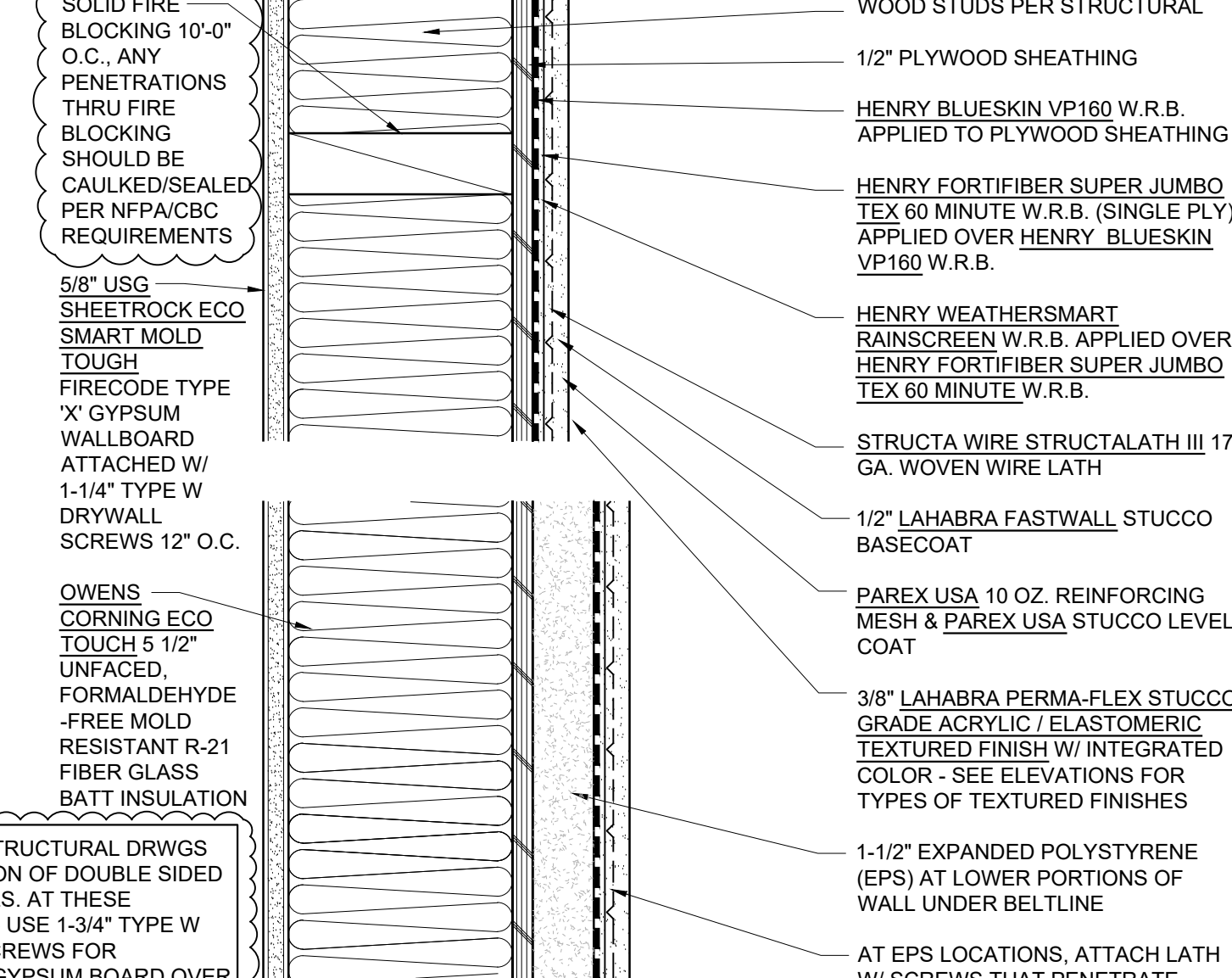
10 CEMENT PLASTER SOFFIT ASSEMBLY
SCALE: 3" = 1'-0"



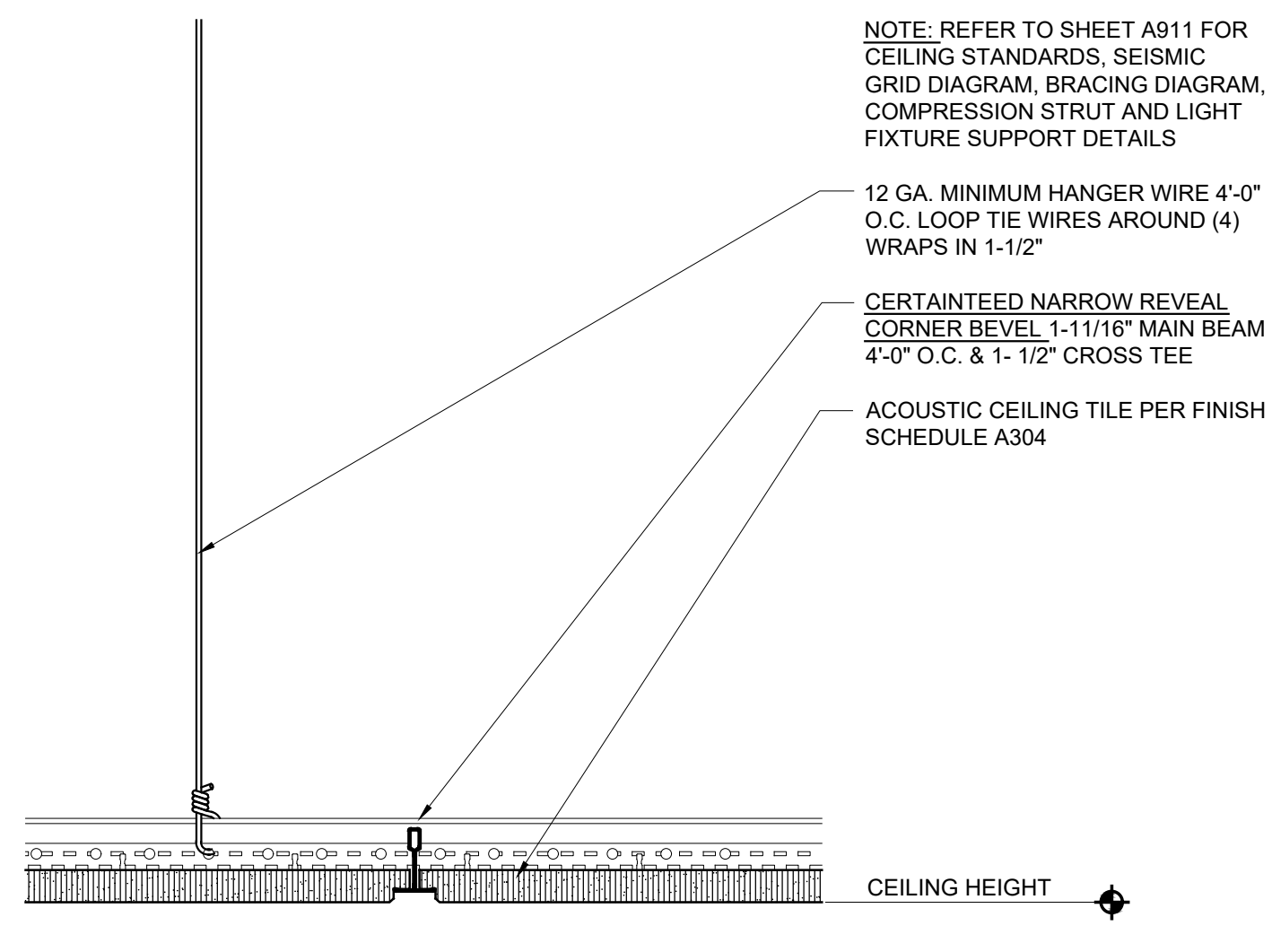
7 FLOOR / CEILING ASSEMBLY
SCALE: 3" = 1'-0"



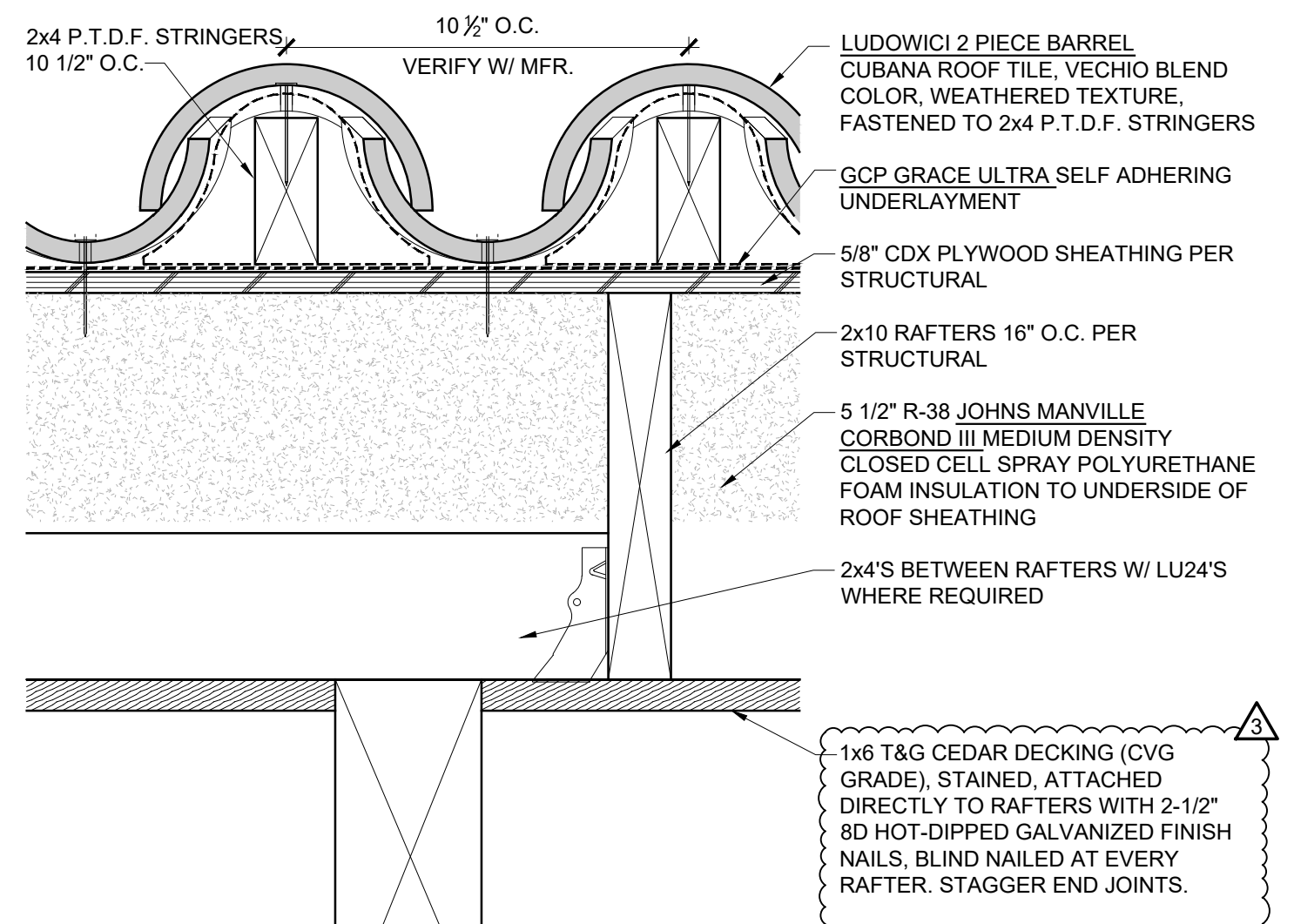
4 INTERIOR WALL ASSEMBLY
SCALE: 3" = 1'-0"



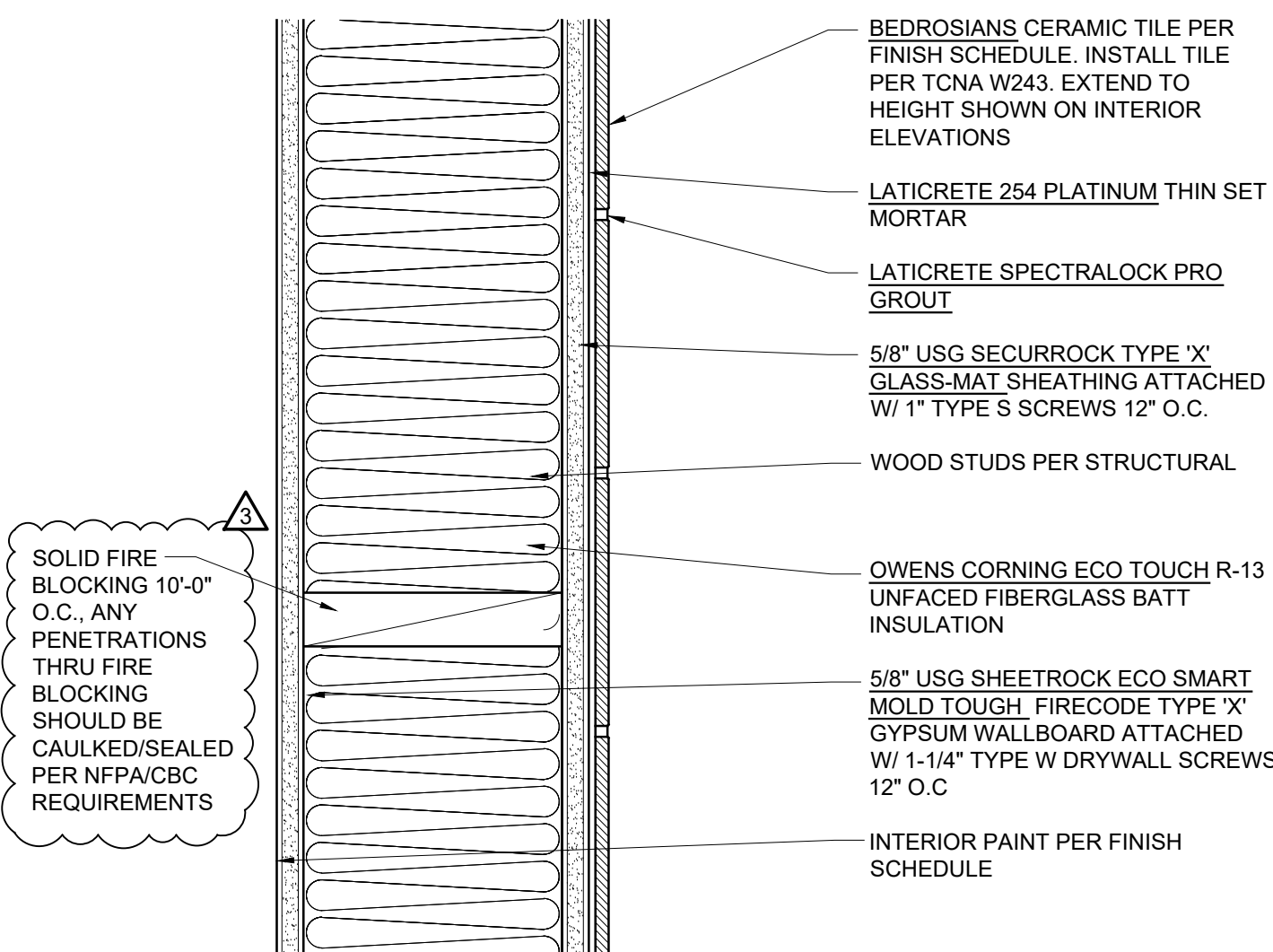
1 EXTERIOR WALL ASSEMBLY
SCALE: 3" = 1'-0"



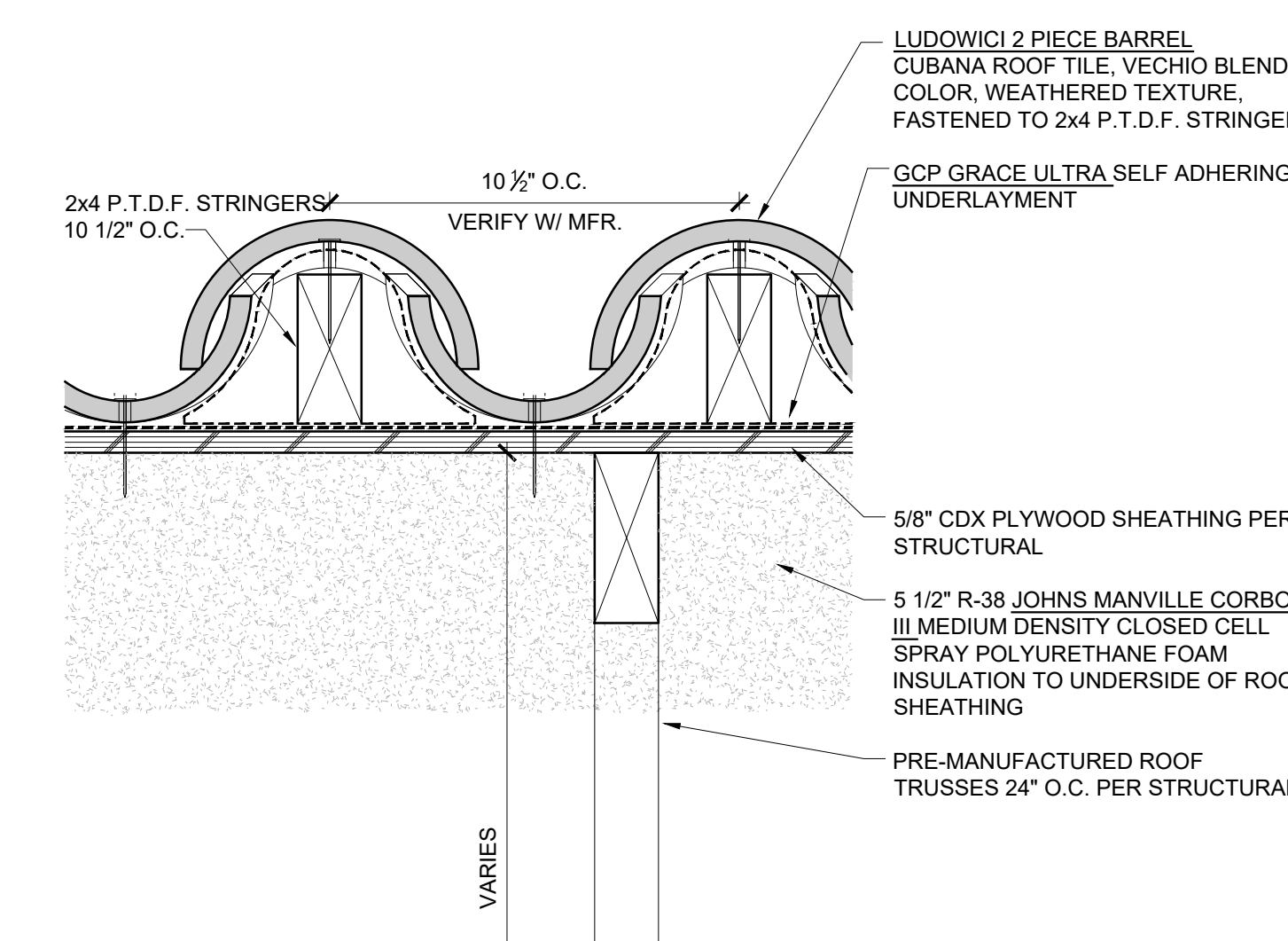
11 SUSPENDED ACOUSTIC PANEL CEILING ASSEMBLY
SCALE: 3" = 1'-0"



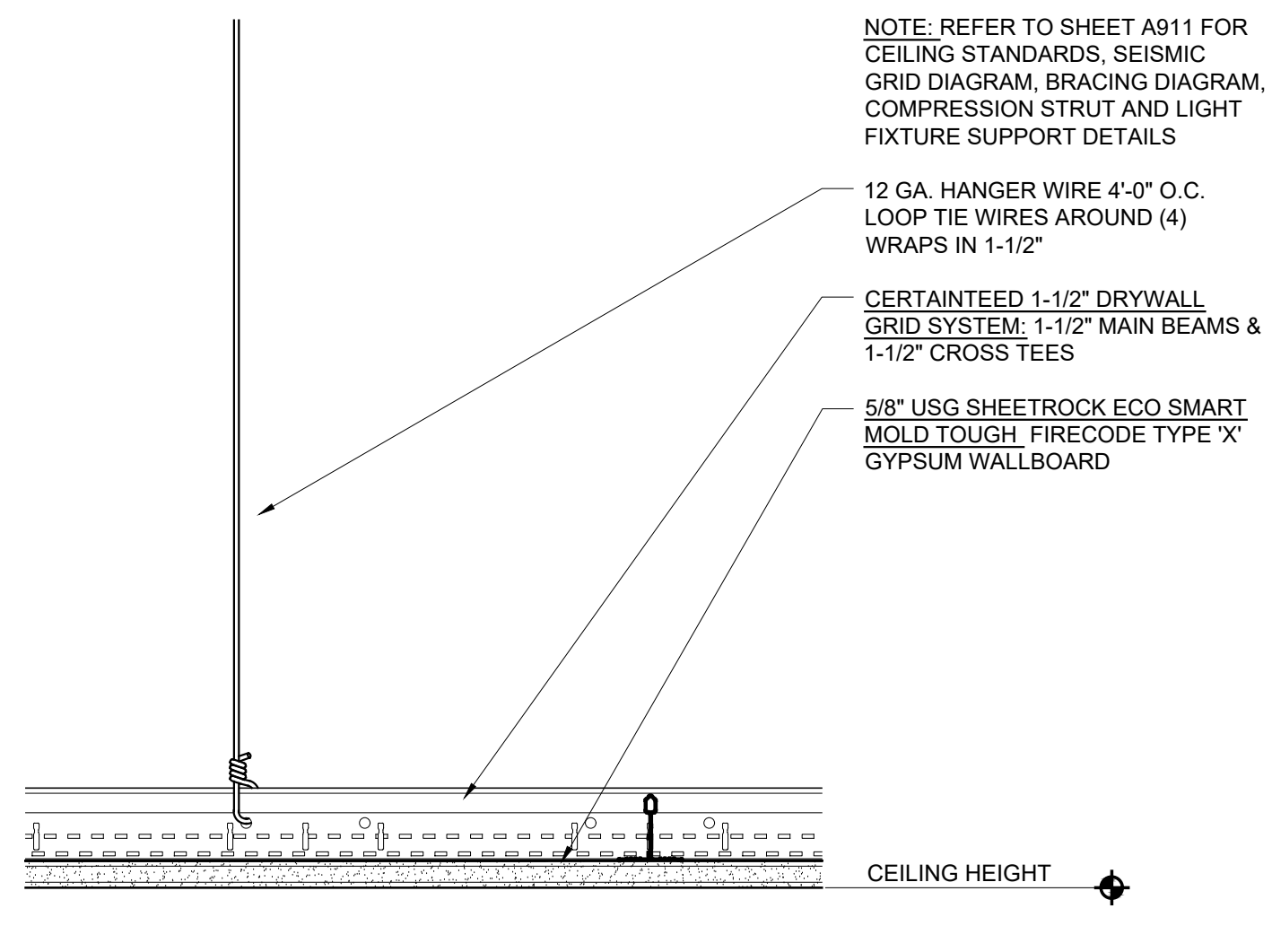
8 STEEP SLOPE ROOF ASSEMBLY
SCALE: 3" = 1'-0"



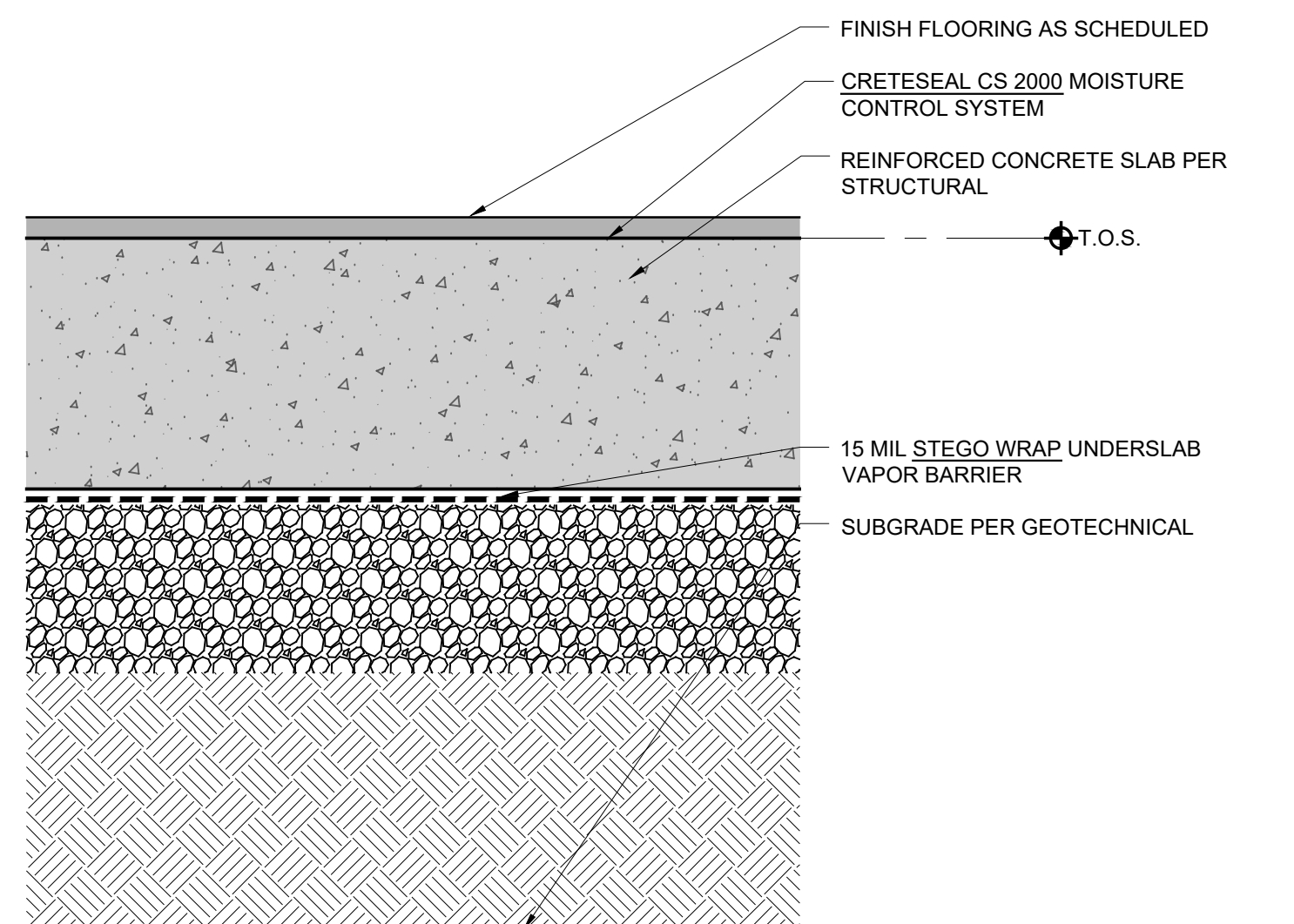
5 CERAMIC TILE WALL ASSEMBLY
SCALE: 3" = 1'-0"



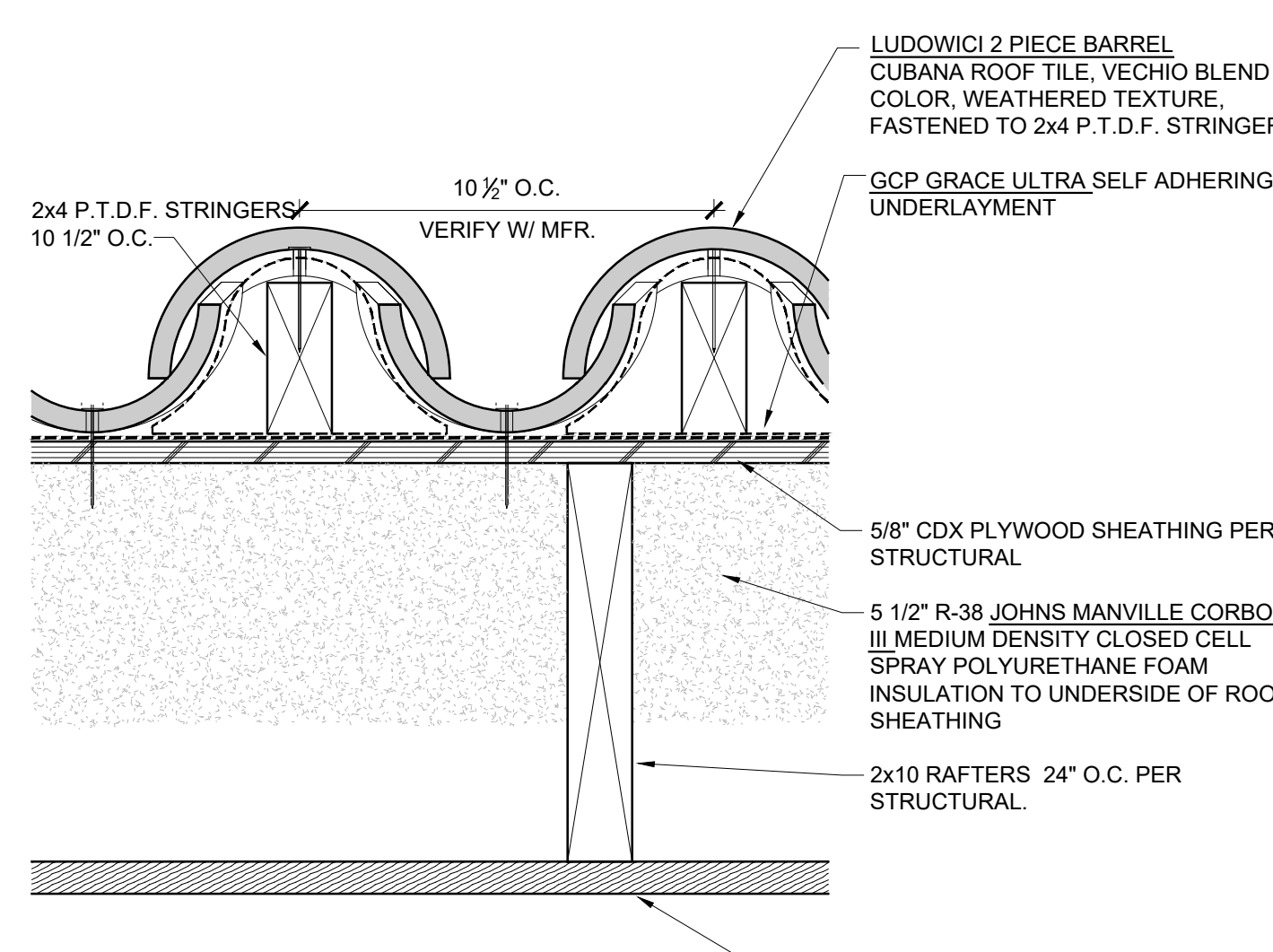
3 STEEP SLOPE ROOF ASSEMBLY
SCALE: 3" = 1'-0"



12 SUSPENDED GYPSUM BOARD CEILING ASSEMBLY
SCALE: 3" = 1'-0"



9 FLOOR ASSEMBLY
SCALE: 3" = 1'-0"



6 STEEP SLOPE ROOF ASSEMBLY
SCALE: 3" = 1'-0"

60

WR&D
WALD RUHNKE & DOST ARCHITECTS LLP

2340 GARDEN ROAD, SUITE 100
MONTEREY, CALIFORNIA 93940
PHONE: 831.649.4642
FAX: 831.649.3530
WWW.WRDARCH.COM

THE USE OF THE PLANS AND SPECIFICATIONS IS RESTRICTED TO THE ORIGINAL SITE FOR WHICH THEY WERE PREPARED AND PUBLICATION THEREOF IS EXPRESSLY LIMITED TO SUCH USE. REUSE, REPRODUCTION OR PUBLICATION BY ANY METHOD IN WHOLE OR IN PART IS PROHIBITED. TITLE TO THE PLANS AND SPECIFICATIONS REMAINS WITH THE ARCHITECT, AND VISUAL CONTACT WITH THESE CONSTITUTES FRAUD. EVIDENCE OF THE ACCEPTANCE OF THESE RESTRICTIONS.

LICENSED ARCHITECT
STATE OF CALIFORNIA
No. C31488
REN. 1/31/27

MONTEREY COUNTY EAST GARRISON LIBRARY

MONTEREY COUNTY
13993 SHERMAN BLVD.
MARINA, CA 93933

A.P.N.: 031-164-130-000

JOB NO.: 23159

PRINT DATE: 4.30.2026

PLOT DATE: 4.30.2026

DRAWN BY: VA

CHECKED BY: MH

SET ISSUED:

PERMIT SUB.: 6/20/2025

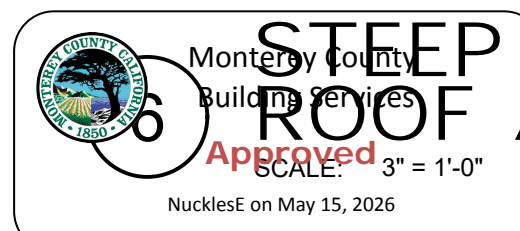
BACKCHECK #1: 11/21/2025

BID UPDATES: 04/10/2026

SHEET NAME: ASSEMBLY DETAILS

SHEET NO.: A800

FILE NAME: 23159-A800



(TITLE 21, TITLE 22 AND PARTS 2 OF TITLE 24, CCR)

MAXIMUM ALLOWABLE LOAD FOR 10 GAGE AND 12 GAGE WIRE

A) DESCRIPTION: GALVANIZED SOFT ANNEALED MILD STEEL WIRE AS USED IN SECTIONS 4701 (E), TITLE 24, CCR, WILL BE THE DESCRIPTION OF THIS WIRE.

B) BASIS OF DESIGN STRENGTH: BASED ON THE TESTS WHICH OSA/SSS HAS RECEIVED TO-DATE FOR THIS TYPE OF WIRE, AN ULTIMATE STRESS OF 60,000 PSI WILL BE USED FOR #10 GAGE AND #12 GAGE WIRE.

C) DESIGN VALUE: BASIS STRESS WILL BE THE ULTIMATE STRESS DIVIDED BY 2.5 OR 24,000 PSI. A 1/3 INCREASE FOR LATERAL FORCE WILL BE PERMITTED FOR A STRESS OF 32,000 PSI. USING THESE VALUES, NO TESTING OF WIRE IS NECESSARY.

D) DIAMETER OF WIRES: #10 WIRE IS 0.135" IN DIAMETER AND A #12 WIRE IS 0.1055" IN DIAMETER AS SHOWN BY THE U.S. STEEL WIRE GAGE.

E) ALLOWABLE LOAD	BASIC LOAD	LATERAL LOAD (1/3 INCREASE)
#10 WIRE	343#	458#
#12 WIRE	209#	278#

F) FABRICATION: WHEN USING TWISTS ON WIRE TO DEVELOP THE MAXIMUM ALLOWABLE LOAD, USE MINIMUM OF 4 TWISTS WITHIN 1-1/2". THREE TWISTS MAY BE USED TO DEVELOP NOT MORE THAN ONE HALF THE ABOVE VALUES.

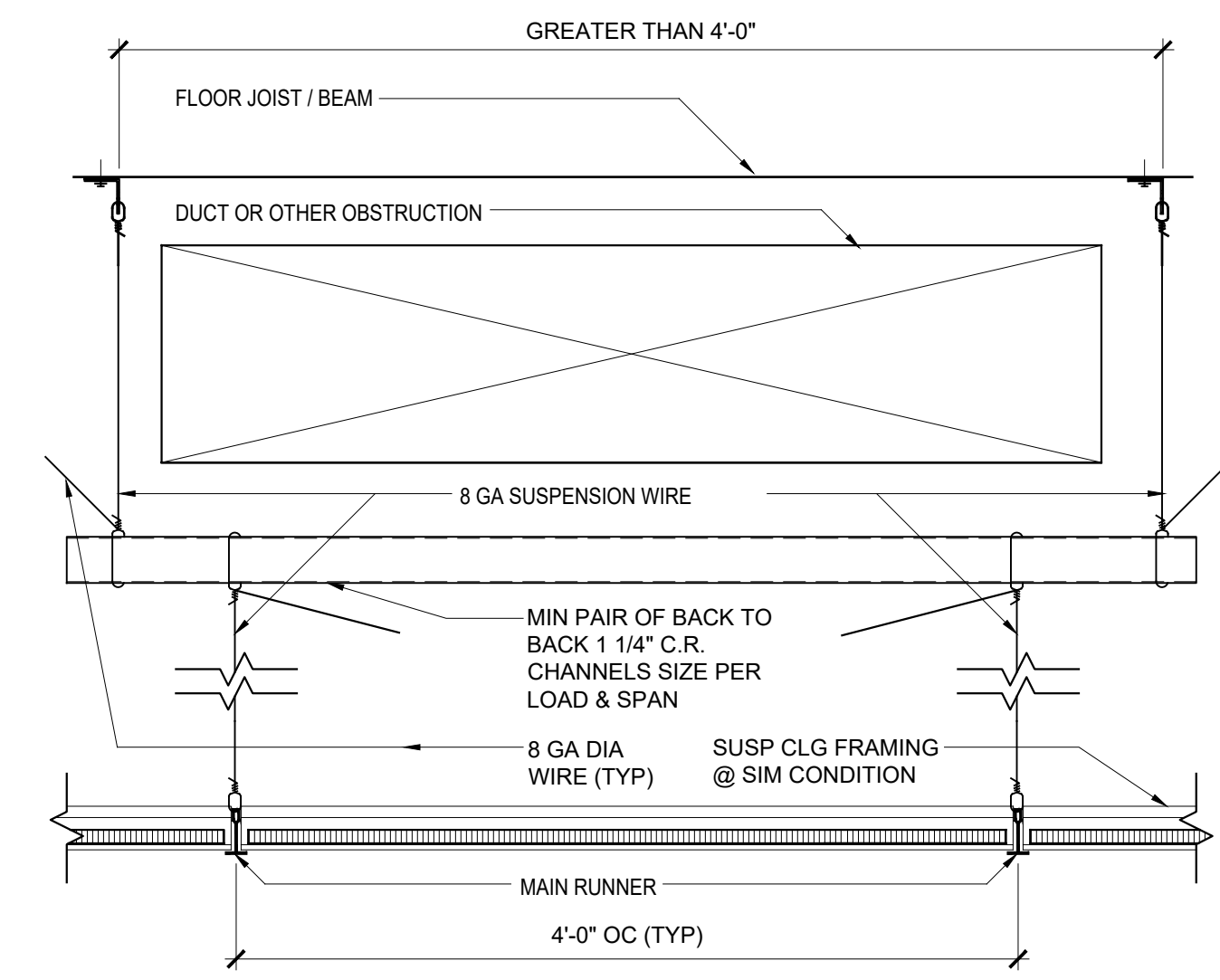
G) LIMITATIONS:

- 1) THESE VALUES ARE FOR TENSION VALUES OF WIRE ONLY. TEARING OF THIN METAL BY WIRE MUST BE CONSIDERED.
- 2) IF THE SPECIFICATION REQUIRES A SPECIAL WIRE SUCH AS A WIRE MEETING FEDERAL SPECIFICATION FS-QQ-W281g, FINISH 5, CLASS 1, SOFT TEMPER WITH AN ULTIMATE STRESS OF 70,000 PSI FOR #10 WIRE & 75,000 PSI FOR #12 WIRE, A PROPORTIONATELY HIGHER ALLOWABLE MAY BE USED.

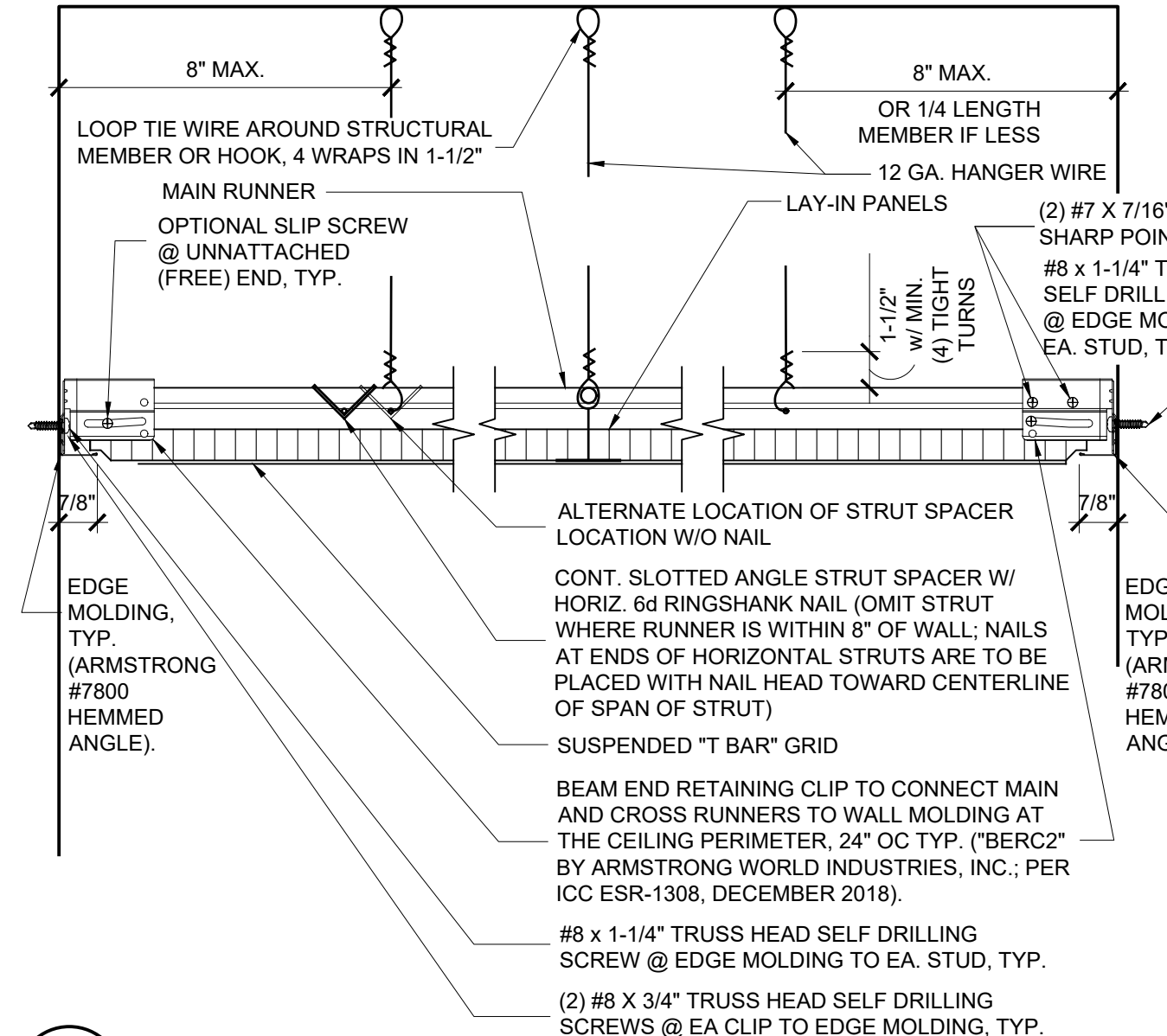
METAL SUSPENSION SYSTEMS FOR LAY IN PANEL CEILINGS

A) REFERENCE: CALIFORNIA BUILDING CODE, SECTION 808

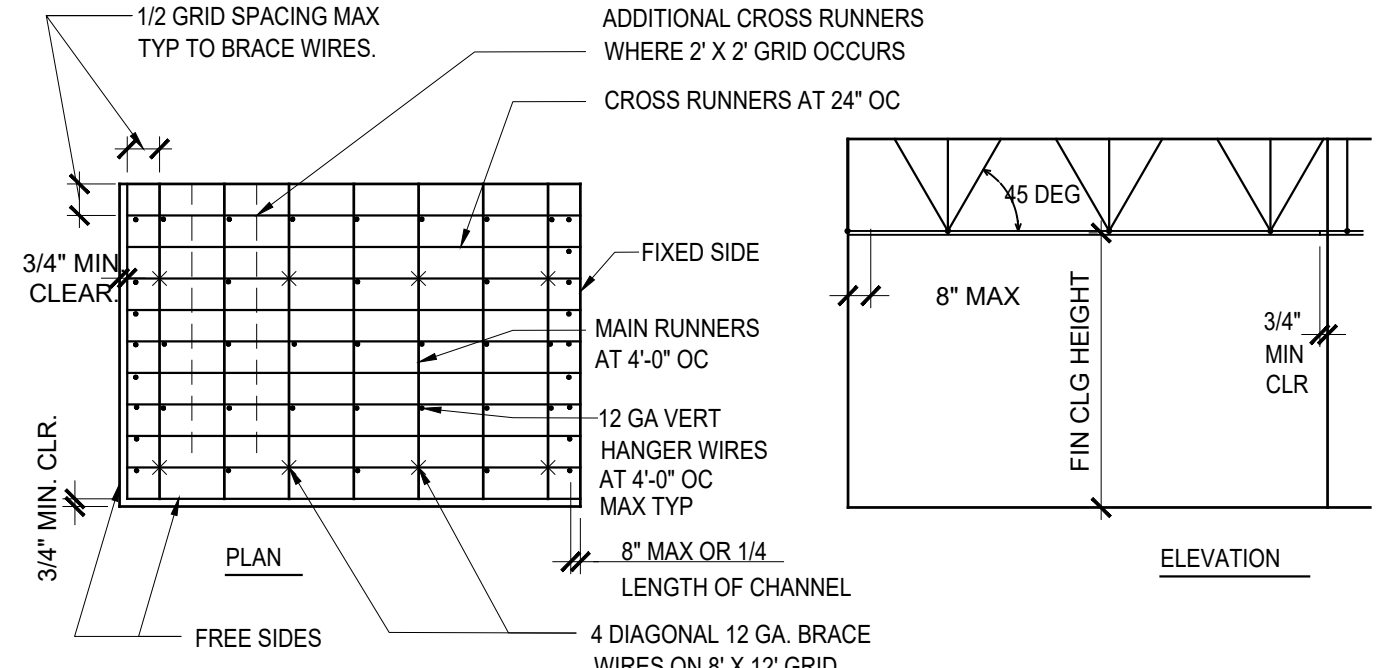
- 1) 12 GA. (MIN.) HANGER WIRES SHALL BE USED FOR UP TO AND INCLUDING 4'-0"x4'-0" GRID SPACING AND SHALL BE ATTACHED TO MAIN RUNNERS.
- 2) PROVIDE #12 GA. HANGER WIRES AT THE ENDS OF ALL MAIN AND CROSS RUNNERS WITHIN 8" FROM THE SUPPORT OR WITHIN 1/4" OF THE LENGTH OF THE END TEE, WHICHEVER IS LEAST, FOR THE PERIMETER OF THE CEILING AREA. END CONNECTIONS FOR RUNNERS WHICH ARE DESIGNED AND DETAILED TO RESIST THE APPLIED VERTICAL AND HORIZONTAL FORCES MAY BE USED IN LIEU OF THE #12 GA. HANGER WIRES SUBJECT TO OSA/SSA REVIEW AND APPROVAL.
- 3) PROVIDE TRAPEZE OR OTHER SUPPLEMENTARY SUPPORT MEMBERS AT OBSTRUCTIONS TO MAINTAIN HANGER SPACING. PROVIDE ADDITIONAL HANGERS, STRUTS. HANGER WIRES THAT ARE MORE THAN 1 IN 6 OUT OF PLUMB ARE TO HAVE COUNTER-SLOPING WIRES.
- 4) CEILING GRID MEMBERS MAY BE ATTACHED TO NOT MORE THAN 2 ADJACENT WALLS. CEILING GRID MEMBERS SHOULD BE AT LEAST 3/4" FREE OF OTHER WALLS. IF WALLS RUN DIAGONALLY TO CEILING GRID SYSTEM RUNNERS, ONE END OF MAIN AND CROSS RUNNERS SHOULD BE FREE WITH A MINIMUM OF 3/4" CLEAR AT WALL.
- 5) AT THE PERIMETER OF THE CEILING AREA WHERE MAIN OR CROSS RUNNERS ARE NOT CONNECTED TO THE ADJACENT WALL, PROVIDE INTERCONNECTION BETWEEN THE RUNNERS AT THE FREE END TO PREVENT LATERAL SPREADING. A METAL STRUT OR A 16 GA. WIRE WITH A POSITIVE MECHANICAL CONNECTION TO THE RUNNER MAY BE USED. WHERE THE PERPENDICULAR DISTANCE FROM THE WALL TO THE FIRST PARALLEL RUNNER IS 12" OR LESS, THIS INTERLOCK IS NOT REQUIRED.
- 6) PROVIDE LATERAL SUPPORT BRACING ASSEMBLIES CONSISTING OF COMPRESSION STRUT AND FOUR (4) #12 GA. SPAYED BRACING WIRES ORIENTED 90 DEGREES FROM EACH OTHER AT THE FOLLOWING SPACING:
 - (A) PLACE BRACING ASSEMBLIES NOT MORE THAN 8' x 12' ON CENTER.
 - (B) PROVIDE BRACING ASSEMBLIES AT LOCATIONS NOT MORE THAN ONE HALF (1/2) THE CALCULATED SPACINGS GIVEN ABOVE, FOR EACH PERIMETER WALL AND AT THE EDGE OF VERTICAL CEILING OFFSETS. THE SLOPE OF THESE WIRES SHOULD NOT EXCEED 45 DEGREES FROM A HORIZONTAL PLANE AND SHOULD BE TAUT. SPLICES IN BRACING WIRES ARE NOT TO BE PERMITTED.
 - (C) THE MAXIMUM SLENDERNESS RATIO (KL/R) OF THE COMPRESSION STRUT IS 200 OR LESS.
- 7) FASTEN #12 HANGER WIRES WITH NOT LESS THAN 3 TIGHT TURNS. FASTEN #10 OR #12 BRACING WIRES WITH 4 TIGHT TURNS. MAKE ALL TIGHT TURNS WITHIN A DISTANCE OF 1 1/2". HANGER OR BRACING WIRE ANCHORS TO THE STRUCTURE SHOULD BE INSTALLED IN SUCH A MANNER THAT THE DIRECTION OF THE WIRE ALIGNS AS CLOSELY AS POSSIBLE WITH THE DIRECTION OF THE FORCES ACTION ON THE WIRE.
- 8) SEPARATE ALL CEILING HANGING AND BRACING WIRES AT LEAST SIX INCHES (6") FROM ALL UNBRACED DUCTS, PIPES, CONDUIT, ETC.
- 9) WHEN DRILLED IN CONCRETE ANCHORS OR SHOT IN ANCHORS ARE USED IN REINFORCED CONCRETE FOR HANGER WIRES, 1 OUT OF 10 MUST BE FIELD TESTED FOR 200 POUNDS OF TENSION. WHEN DRILLED IN CONCRETE ANCHORS ARE USED FOR BRACING WIRES, 1 OUT OF 2 MUST BE FIELD TESTED FOR 440 POUNDS IN TENSION. SHOT IN ANCHORS IN CONCRETE ARE NOT PERMITTED FOR BRACING WIRES. IF ANY SHOT IN OR DRILLED IN ANCHOR FAILS, ALL ADJACENT ANCHORS MUST BE TESTED. NOTE: DRILLED IN OR SHOT IN ANCHORS REQUIRED SPECIAL STATE APPROVAL WHEN USED IN PRESTRESSED CONCRETE.
- 10) ATTACH ALL LIGHT FIXTURES TO THE CEILING GRID RUNNERS TO RESIST A HORIZONTAL FORCE EQUAL TO THE WEIGHT OF THE FIXTURES.
- 11) FLUSH OR RECESSED LIGHT FIXTURES AND MECHANICAL TERMINALS OR SERVICES WEIGHING LESS THAN 20 POUNDS MAY BE SUPPORTED DIRECTLY ON THE RUNNERS OF A HEAVY DUTY GRID SYSTEM BUT, IN ADDITION THEY MUST HAVE MINIMUM OF TWO 12 GA. SLACK SAFETY WIRES ATTACHED TO THE FIXTURE AT DIAGONAL CORNERS AND ANCHORED TO THE STRUCTURE ABOVE. ALL 4' x 4' LIGHT FIXTURES MUST HAVE SLACK SAFETY WIRES AT EACH CORNER.
- 12) ALL FLUSH OR RECESSED LIGHT FIXTURES WEIGHING 56 POUNDS AND MECHANICAL TERMINALS OR SERVICES WEIGHING 20 LBS. OR MORE MUST BE INDEPENDENTLY SUPPORTED BY NOT LESS THAN FOUR (4) TAUT #12 GA. WIRES EACH ATTACHED TO THE FIXTURES AND TO THE STRUCTURE ABOVE, REGARDLESS OF THE TYPE OF CEILING GRID SYSTEM USED. THE FOUR (4) TAUT 12 GA. WIRES INCLUDING THEIR ATTACHMENT TO THE STRUCTURE ABOVE MUST BE CAPABLE OF SUPPORTING 4 TIMES THE WEIGHT OF THE UNIT.
- 13) SUPPORT SURFACE MOUNTED LIGHT FIXTURES BY AT LEAST TWO POSITIVE DEVICES WHICH SURROUND THE CEILING RUNNER AND WHICH ARE EACH SUPPORTED FROM THE STRUCTURE ABOVE BY A #12 GA. WIRE. SPRING CLIPS OR CLAMPS THAT CONNECT ONLY TO THE RUNNER ARE NOT ACCEPTABLE. PROVIDE ADDITIONAL SUPPORTS WHEN LIGHT FIXTURES ARE 8 FT. OR LONGER.
- 14) THE CEILING GRID SYSTEM MUST BE RATED AS 'HEAVY DUTY' AS DEFINED BY ASTM C635.
- 15) ESSENTIAL SERVICES BUILDINGS: IN EXITWAYS A MAIN OR CROSS RUNNER SHALL BE INSTALLED ON ALL SIDES OF EACH PIECE OF TILE, BOARD, OR PANEL AND EACH LIGHT FIXTURE OR GRILL. SPLICES OR INTERSECTIONS OF SUCH RUNNERS SHALL BE ATTACHED WITH THROUGH CONNECTORS SUCH AS POP RIVETS, SCREWS, PINS, PLATES WITH END TABS OR OTHER APPROVED CONNECTORS.
- 16) SUSPENDED ACOUSTICAL CEILING SYSTEMS WITH A CEILING AREA OF 144 SQUARE FEET OR LESS, SURROUNDED BY WALLS WHICH CONNECT DIRECTLY TO THE STRUCTURE ABOVE OR WALLS INDEPENDENTLY BRACED ABOVE CEILING TO STRUCTURE ABOVE DO NOT REQUIRE BRACING ASSEMBLIES WHEN ATTACHED TO TWO ADJACENT WALLS.
- 17) PARTITIONS, NON BEARINGS PARTITIONS THAT EXTEND TO AND TERMINATE AT A SUSPENDED CEILING, AND ARE SUPPORTED Laterally BY AN ADEQUATE BRACING SYSTEM OF SPAYED WIRES SPACED NOT MORE THAN 8 FT. ON CENTER ALONG THE TOP EDGE OF THE PARTITION OR BY OTHER EQUIVALENT MEANS MAY BE CONSIDERED AS NOT ADDING TO THE LATERAL LOAD REQUIRED TO BE RESISTED BY THE CEILING SYSTEM.
- 18) ALL FIELD TESTS MUST BE PERFORMED IN THE PRESENCE OF THE PROJECT INSPECTOR OF RECORD.



7 CEILING TRAPEZE @ DUCT/OBSTRUCTION
SCALE: 3"=1'-0"



4 SUSPENDED CEILING
SCALE: 3"=1'-0"

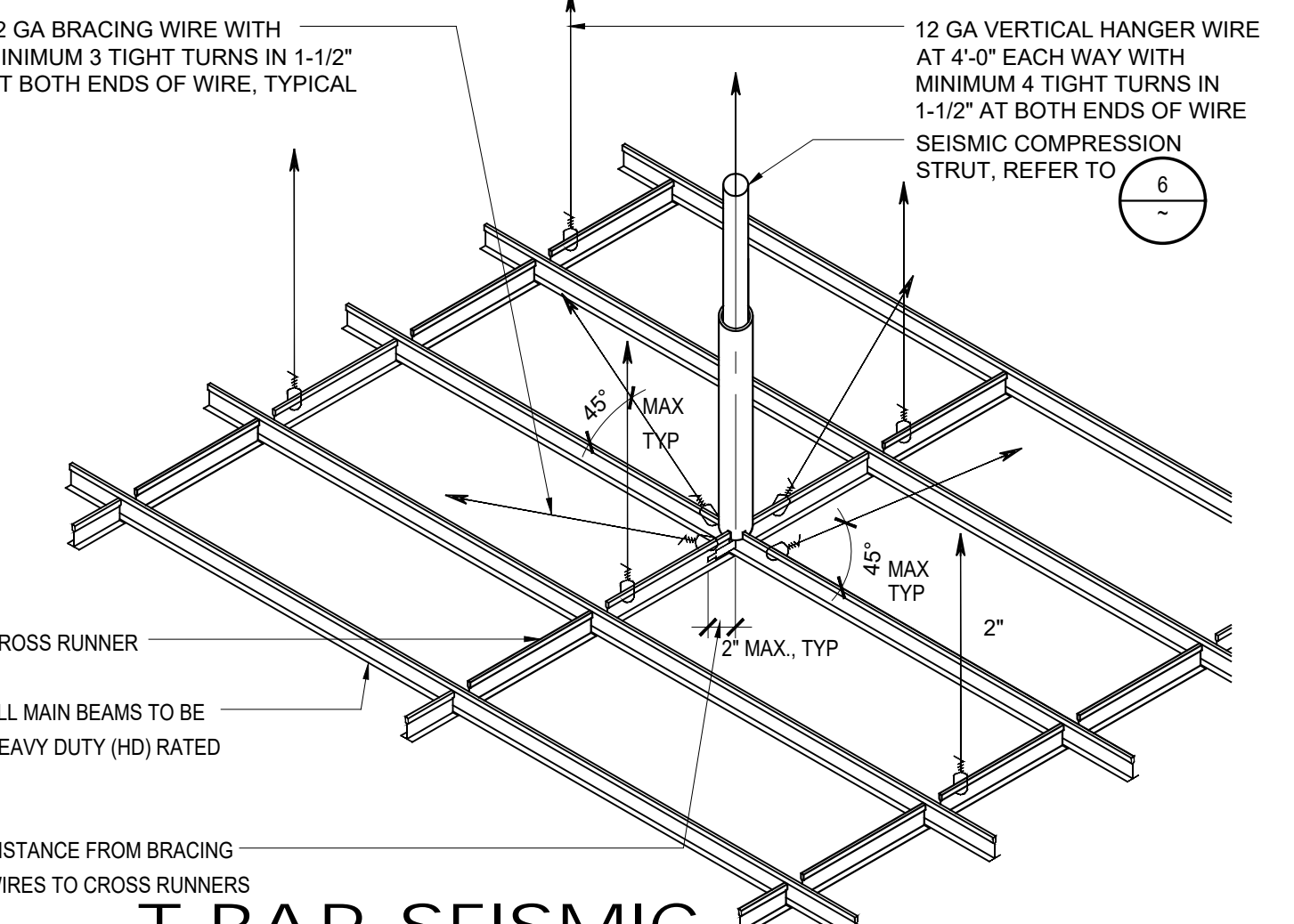


2022 CBC SECTION 808.1.1 AND 1617A.1.21, WHICH REPLACES & ASC 7 13.5.6.2.

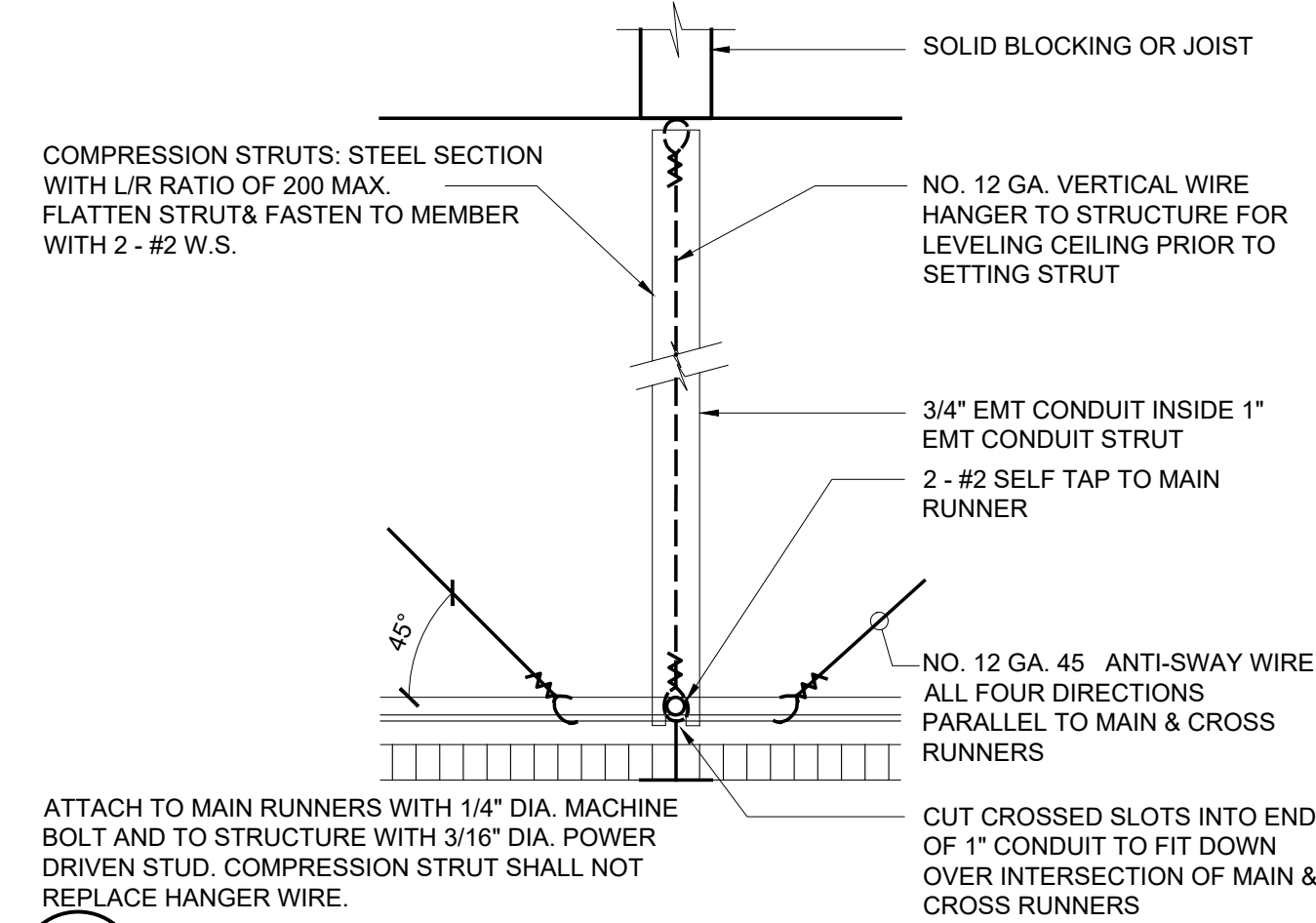
1. SEISMIC COMPRESSION STRUT (SEE DETAIL 6/A921): STRUCTURAL STUD (400S137-33, 20 GAGE) FASTENED TO THE MAIN RUNNER SHALL BE EXTENDED TO AND FASTENED TO THE STRUCTURAL MEMBERS SUPPORTING THE FLOOR ABOVE. STRUTS SHALL BE PROVIDED AT BRACE WIRE LOCATIONS AS SHOWN IN DETAIL 1/A921. STRUTS SHALL BE ADEQUATE TO RESIST THE VERTICAL COMPONENT INDUCED BY THE BRACING WIRES. FOR ATTACHMENT OF BRACE WIRE TO STRUCTURE ABOVE, SEE DETAIL 9/A921.
2. THE CEILING GRID SYSTEM SHALL BE RATED HEAVY DUTY AS DEFINED BY ASTM C635.
3. THE WIDTH OF PERIMETER CLOSURE ANGLE SHALL BE 2" MINIMUM IN WIDTH. IN EACH ORTHOGONAL HORIZONTAL DIRECTION, ONE END OF CEILING GRID SHALL BE ATTACHED TO THE CLOSURE ANGLE. THE OTHER END IN EACH HORIZONTAL DIRECTION SHALL HAVE A MINIMUM 3/4" CLEARANCE FROM THE WALL AND SHALL REST UPON AND BE FREE TO SLIDE ON A CLOSURE ANGLE.
4. SPRINKLER HEAD PENETRATION SHALL HAVE A 2" OVERSIZE RING, SLEEVE OR ADAPTER THROUGH THE CEILING TILE TO ALLOW FREE MOMENT OF AT LEAST 1" IN ALL HORIZONTAL DIRECTIONS.

1 T-BAR SEISMIC GRID SUSPENSION DIAGRAM
SCALE: NO SCALE

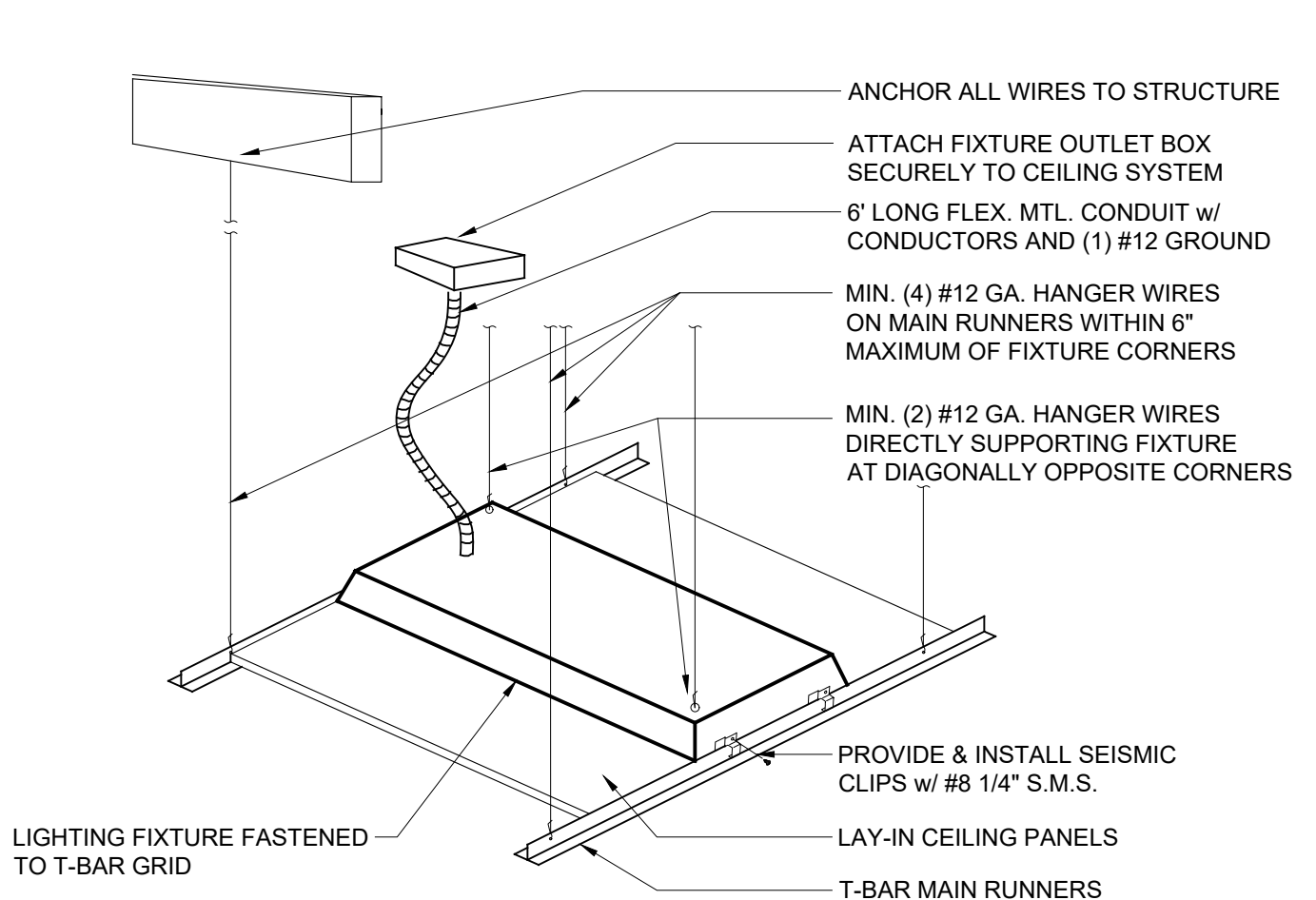
HORIZONTAL RESTRAINTS SHALL BE EFFECTED BY FOUR NO. 12 GAUGE WIRES SECURED TO THE MAIN RUNNER WITHIN 2" OF THE CROSS RUNNER INTERSECTION AND SPAYED 90° FROM EACH OTHER AT AN ANGLE NOT EXCEEDING 45° FROM THE PLANE OF THE CEILING. THE STRUT SHALL BE ADEQUATE TO RESIST THE VERTICAL COMPONENT INDUCED BY THE BRACING WIRES. THESE HORIZONTAL RESTRAINT POINTS SHALL BE PLACED 12" x 8" MAXIMUM SPACING WITH THE FIRST POINT WITHIN 6" FROM EACH WALL. ATTACHMENT OF THE RESTRAINT WIRES TO THE STRUCTURE ABOVE SHALL BE ADEQUATE FOR THE LOAD IMPOSED.



2 T-BAR SEISMIC BRACING DIAGRAM
SCALE: NO SCALE

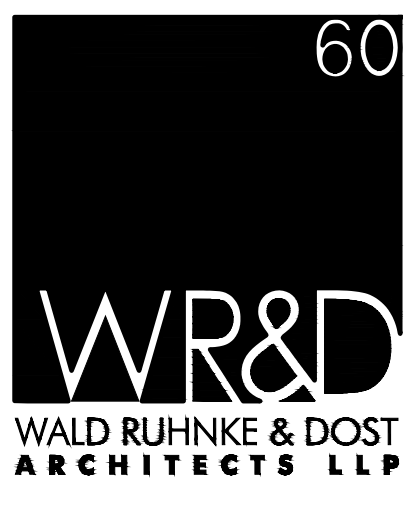


6 COMPRESSION STRUT
SCALE: NO SCALE



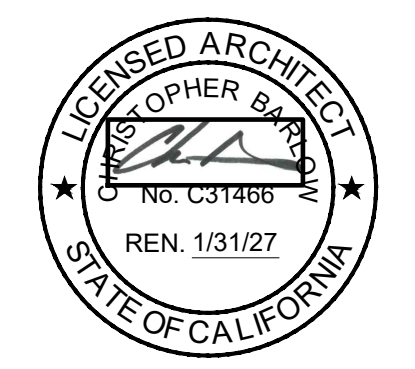
3 LIGHT FIXTURE SUPPORT
SCALE: NO SCALE

12 LAY-IN CEILING STANDARDS
SCALE: NO SCALE



2340 GARDEN ROAD, SUITE 100
MONTEREY, CALIFORNIA 93940
PHONE: 831.649.4642
FAX: 831.649.3530
WWW.WRDARCH.COM

THE USE OF THE PLANS AND SPECIFICATIONS IS RESTRICTED TO THE ORIGINAL SITE FOR WHICH THEY WERE PREPARED, AND PUBLICATION THEREOF IS EXPRESSLY LIMITED TO SUCH USE. REUSE, REPRODUCTION OR PUBLICATION BY ANY METHOD IN WHOLE OR IN PART IS PROHIBITED. TITLE TO THE PLANS AND SPECIFICATIONS REMAINS WITH THE ARCHITECT, AND VISUAL CONTACT WITH THEM CONSTITUTES PRIMA FACIE EVIDENCE OF THE ACCEPTANCE OF THESE RESTRICTIONS.



MONTEREY COUNTY EAST GARRISON LIBRARY

MONTEREY COUNTY
139983 SHERMAN BLVD.
MARINA, CA 93933

A.P.N.: 031-164-130-000

JOB NO.: 23159

PRINT DATE:

PLOT DATE: 11.10.2025

DRAWN BY: SC

CHECKED BY: SC

SET ISSUED:

PERMIT SUB.: 6/20/2025

BACKCHECK #1: 1/21/2025

SHEET NAME:

CEILING DETAILS

SHEET NO.:

A911

FILE NAME: 23159-A911



CALIFORNIA ACOUSTICS

License #991823

WAREHOUSE

200 Healy Ave., Suite B

Marina CA 93933.

PHONE # (/ 831-236-0929)

Mailing Address

PO BOX 14, CARMEL VALLEY, CA

MEMBER OF CARPENTERS UNION SINCE 1974

6.11.2026.

DIR # 1000007264

DmCMP.

TO.....
FROM.....JACK.....
JOB.....E GARRISON LIBRARY.....

2' X 2' 9/16" TBAR WITH # 1776 DUNE TILE.....

INCLUDES 2 SLACK SAFETY WIRES PER LITE FIXTURE,
EXCLUDES WINDOW SHADE POCKETS,

FRP ROOM 116, 4' WAINSCOT.....

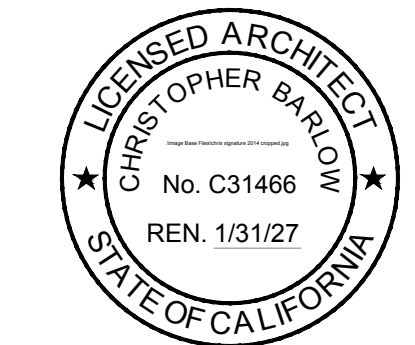
4 ADDENDUM SEEN.

JACK HENDEN
jack@califacoustics.com



2340 GARDEN ROAD, SUITE 100
 MONTEREY, CALIFORNIA 93940
 PHONE: 831.649.4642
 FAX: 831.649.3530
 WWW.WRDARCH.COM

THE USE OF THE PLANS AND SPECIFICATIONS IS RESTRICTED TO THE ORIGINAL SITE FOR WHICH THEY WERE PREPARED, AND PUBLICATION THEREOF IS EXPRESSLY LIMITED TO SUCH USE. REUSE, REPRODUCTION OR PUBLICATION BY ANY METHOD, IN WHOLE OR IN PART IS PROHIBITED. TITLE TO THE PLANS AND SPECIFICATIONS REMAINS WITH THE ARCHITECT, AND VISUAL CONTACT WITH THEM CONSTITUTES PRIMA FACIE EVIDENCE OF THE ACCEPTANCE OF THESE RESTRICTIONS.



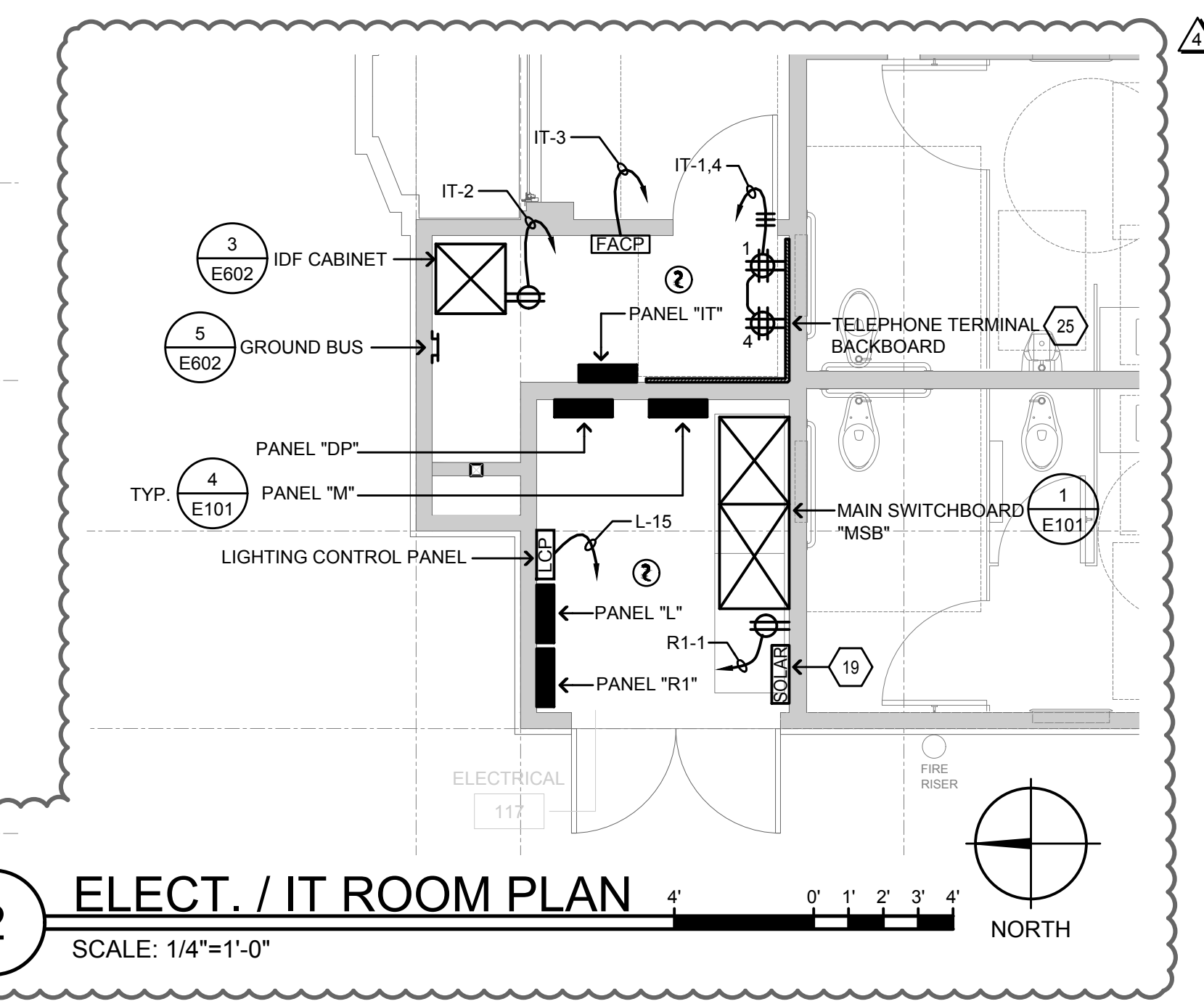
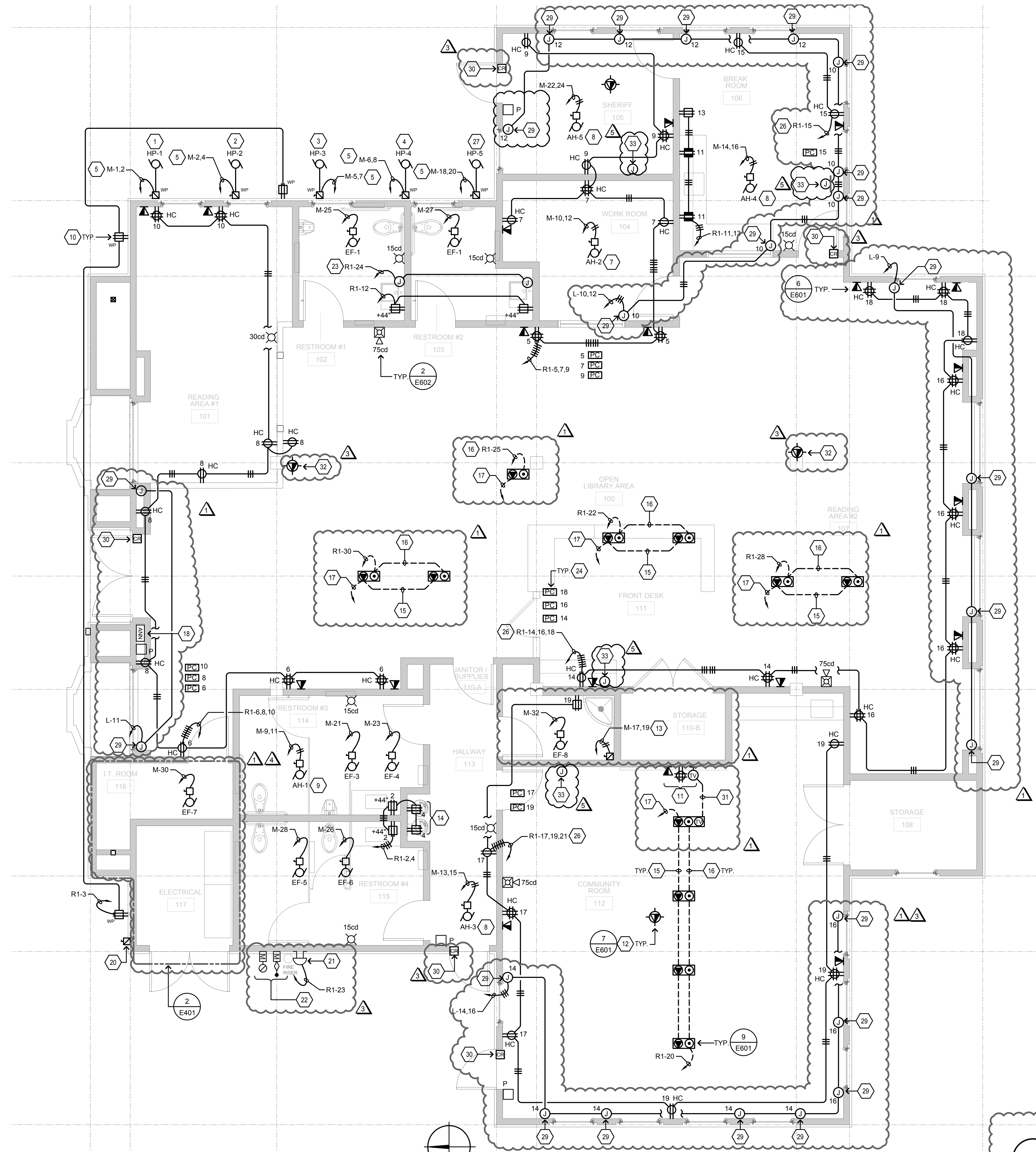
MONTEREY COUNTY
 EAST GARRISON LIBRARY
 MONTEREY COUNTY
 13993 SHERMAN BLVD.
 MARINA, CA 93933
 A.P.N.: 031-164-130-000

BRANCH CIRCUIT CONDUCTOR SIZING TABLE		
CIRCUIT AMPACITY/VOLTAGE	CIRCUIT LENGTH	REQUIREMENT
20/120	56'-90"	½" C., 2 #10 & 1 #10 GND.
20/120	91'-140"	½" C., 2 #8 & 1 #8 GND.
20/277	131'-205"	½" C., 2 #10 & 1 #10 GND.
20/277	206'-330"	½" C., 2 #8 & 1 #8 GND.

NOTE:
 A. CONTRACTOR SHALL SIZE BRANCH CIRCUIT CONDUCTORS PER THE TABLE ABOVE AS DETERMINED BY THE CIRCUIT CONDUCTOR LENGTH, U.O.N. CONTRACTOR SHALL SPLICE TO #12 AWG WITHIN TERMINATION BOX FOR DEVICE CONNECTION IF NECESSARY.
 B. WHERE THE UNGROUNDED CONDUCTORS IS INCREASED IN SIZE, INCLUDING FOR VOLTAGE DROP, THE GROUNDED CONDUCTOR SHALL BE INCREASED IN SIZE PROPORTIONATELY PER CEC 250.122(B)

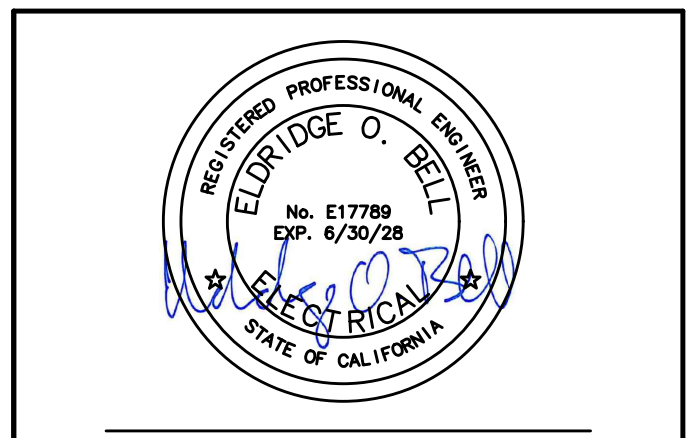
GENERAL NOTES:
 A. UNLESS OTHERWISE NOTED, ALL CONDUITS SHALL BE CONCEALED IN THE WALL AND CEILING.
 B. CONTRACTOR SHALL COORDINATE WITH ARCHITECTURAL DRAWINGS FOR EXACT LOCATION OF FLOOR BOXES AND PRIOR TO INSTALLATION.
 C. SEAL ALL EXTERIOR/INTERIOR BUILDING PENETRATIONS, CUT AND PATCH WALLS/CEILINGS FOR CONDUIT ROUTING AS NECESSARY. PAINT/FINISH EXPOSED CONDUITS/BOXES TO MATCH BUILDING FINISH. COORDINATE WITH ARCHITECT FOR EXACT REQUIREMENTS.
 D. IN AREAS ACCESSIBLE TO THE PUBLIC ALL RECEPTACLES SHALL BE TAMPER RESISTANT.
 E. SEE DETAIL 6/E602 FOR ASSISTIVE LISTENING SYSTEM.
 F. "HC" INDICATES HALF CONTROLLED RECEPTACLE. FOR AUTOMATICALLY CONTROLLED 15A OR 20A, 125V RECEPTACLES, REQUIRES A DURABLE, PERMANENT MARKING. THIS MARKING MUST INCLUDE BOTH THE WORD "CONTROLLED" AND A VISIBLE POWER SYMBOL, AND IT NEEDS TO BE ON THE RECEPTACLE FACE, READILY VISIBLE AFTER INSTALLATION

- SHEET NOTES**
- HEAT PUMP, HP-1; 230V, 1Ø, 22 MCA. PROVIDE AND INSTALL; 30A HEAVY DUTY DISCONNECT W/ 20A FUSE.
 - HEAT PUMP, HP-2; 230V, 1Ø, 22 MCA. PROVIDE AND INSTALL; 30A HEAVY DUTY DISCONNECT W/ 20A FUSE.
 - HEAT PUMP, HP-3; 230V, 1Ø, 22 MCA. PROVIDE AND INSTALL; 30A HEAVY DUTY DISCONNECT W/ 20A FUSE.
 - HEAT PUMP, HP-4; 230V, 1Ø, 26.7 MCA. PROVIDE AND INSTALL; 30A HEAVY DUTY DISCONNECT W/ 20A FUSE.
 - 3/4" C., 3 #8 & 1 #10 GND.
 - AIR HANDLER, AH-1; 230V, 1Ø, 5.13 MCA.
 - AIR HANDLER, AH-2; 230V, 1Ø, 5.13 MCA.
 - AIR HANDLER, AH-3; 230V, 1Ø, 5.13 MCA.
 - AIR HANDLER, AH-4; 230V, 1Ø, 5.13 MCA.
 - PROVIDE AND INSTALL WEATHERPROOF "IN-USE" COVER, TAYMAC OR EQUAL.
 - LOCATE FOR WALL MOUNTED TV, 120V. MOUNT POWER AND DATA AT +60" A.F.F. COORDINATE WITH ARCHITECTURAL DRAWINGS FOR EXACT LOCATION.
 - LOCATE FOR WIRELESS ACCESS POINT.
 - WATER HEATER, HPWH-1; 240V, 1Ø, 2.25 KW.
 - LOCATE FOR DRINKING FOUNTAIN; 120V.
 - 1-1/2" C. - DATA
 - 3/4" C., 2 #12 & 1 #12 GND - POWER
 - 1-1/2" C. - DATA, HOMERUN TO IT ROOM.
 - LOCATE FOR FIRE ALARM ANNUNCIATOR PANEL.
 - DEDICATED SPACE FOR P.V. EQUIPMENT.
 - P.V. DISCONNECT. SEE SHEET E101 FOR REQUIREMENTS.
 - LOCATE FOR FIRE ALARM BELL.
 - LOCATE (2) FIRE ALARM MONITOR MODULES FOR TAMPER/FLOW SWITCH SYSTEM CONNECTIONS. VERIFY EXACT LOCATION WITH PLUMBING/FIRE ALARM PROTECTION DRAWINGS.
 - LOCATE FOR SENSOR FAUCET; 120V.
 - LOCATE FOR PLUG LOAD CONTROLLER. SEE SHEET E605 FOR DETAIL.
 - 4" W X 8" H X 4/3" THICK EXTERIOR GRADE PLYWOOD. PAINT WITH (2) COATS OF FIRE RETARDANT PAINT AND DO NOT PAINT OVER BACKBOARD LABELS.
 - CONNECT VIA PLUG LOAD CONTROLLER.
 - HEAT PUMP, HP-5; 230V, 1Ø, 12 MCA. PROVIDE AND INSTALL; 20A HEAVY DUTY DISCONNECT W/ 20A FUSE.
 - AIR HANDLER, AH-5; 230V, 1Ø, 0.12 MCA.
 - LOCATE FOR MOTORIZED SHADES. PROVIDE AND INSTALL 3/4" CONDUIT FOR CONTROL WIRES BACK TO SHADE CONTROLS.
 - LOCATE FOR CARD READER. PROVIDE AND INSTALL 3/4" C.
 - PROVIDE AND INSTALL 3/4" C.O FOR HDMI BETWEEN WALL AND FLOORBOX.
 - MOUNT WAP TO PILLAR SURFACE. PROVIDE EXPOSED CONDUIT FROM PILLAR-MOUNTED J-BOX TO CEILING SPACE; ROUTE TIGHT TO PILLAR. CONTRACTOR SHALL VERIFY MOUNTING HEIGHT AND FINAL LOCATION WITH ARCHITECT/IT BEFORE INSTALLATION
 - LOCATE FOR SHADE CONTROLS. COORDINATE EXACT LOCATION AND MOUNTING HEIGHT WITH ARCHITECT AND SHADE VENDOR. ROUTE CONDUIT FROM J-BOX AT SHADE MOTOR TO CONTROL LOCATION.



1 POWER & SYSTEMS PLAN
 SCALE: 1/4"=1'-0"

2 ELECT. / IT ROOM PLAN
 SCALE: 1/4"=1'-0"



AURUM CONSULTING ENGINEERS
 MONTEREY BAY, INC.
 Project No. 25-232.00
 404 W. Franklin St. • Suite 100 • Monterey, CA 93940
 T. 831.646.3330 • F. 831.646.3336 • www.acemb.com

These drawings are instruments of service and are the property of AURUM CONSULTING ENGINEERS MONTEREY BAY, INC. All designs and other information in the drawings are for use on the specified project and shall not be used otherwise without the expressed written permission of AURUM CONSULTING ENGINEERS MONTEREY BAY, INC.

JOB NO.: 23159
 PRINT DATE:
 PLOT DATE: 6.3.2026
 DRAWN BY:
 CHECKED BY:
 SET ISSUED:
 PERMIT SUB.: 6/20/2025
 BACKCHECK #1: 11/21/2025
 BID UPDATES: 04/10/2026
 ADDENDUM #2: 05/08/2026
 BID UPDATES: 06/03/2026

SHEET NAME:
 POWER & SYSTEMS PLAN

SHEET NO.:

E401

FILE NAME:

EXHIBIT E

26. **Question:** Boulders on L1.01 are noted to be by Lyngso. Their website has a wide variety of boulders with various pricings. Please indicate which is to be used (the basis of design).
Answer: Pricing to be based on Lyngso's 'Carmel Valley Granite Boulders.
27. **Question:** Landscape drawing L1.02 notes for the perimeter of the building to have a 'maintenance' strip. Nothing found on plans showing what this is, no concrete mow strip shown on arch/civil drawings. Please clarify.
Answer: Disregard the maintenance strip shown on the landscape drawings.
28. **Question:** A231 Note #7 calls for aluminum downspouts. Detail 9/A820 references copper downspout. Please clarify which is to be used.
Answer: Disregard note about aluminum, per 9/A820 all gutters and downspouts shall be copper.
29. **Question:** Electrical plans do not show access controls for all doors noted to have electrified hardware on A302.
Answer: See updated Delta 3 & 4 drawings (dated 5/8/2026), specifically sheet E401.
30. **Question:** Plumbing drawings do not show any waste/water to the sink at Break Room #106. Please advise.
Answer: See updated Delta 3 drawings (dated 4/10/2026), specifically sheet P2.1.
31. **Question:** Please provide references to the plumbing equipment (shown on architectural A303, not plumbing drawings?) directly on the plumbing drawings.
Answer: All equipment is specified on sheet A303 and the locations are identified in the 'Notes' column.
32. **Question:** Please indicate locations of stucco control joints on exterior elevations
Answer: Based on the size and geometry of this specific building no stucco control joints are shown or desired on this project, therefore the section in the specifications regarding control joints can be disregarded. (Note: During construction WRD would welcome discussion with installing sub-contractor on this item, however per recent research from industry professionals it has been determined that control joints can sometimes cause more issues than they solve, are often of minimal benefit in preventing cracks, and should not be required if system is properly installed.
33. **Question:** Addendum #1 references changes to the bid form but did not provide an actual new form. Please provide.
Answer: Please note the changes described in the Addendum #1 are limited to the Table of Unit Costs and not to the entire form. Please find the revised Bid Form Division 003000 in Attachment A to Addendum #3.

EXHIBIT F

5. **Question:** We would like to ask for the Engineer's estimate on both projects in the subject line to determine our options. We are focusing on East Garrison Library. Would it be possible for you to share this information to us? We will greatly appreciate it.

Answer: Please be advised, there is no Project Labor Agreement or Union Affiliation Agreement for this project. Please consider that the County of Monterey does not provide the Engineer's Estimate information. Every effort has been made to provide all disclosable records which might fall within your inquiry. You can also visit the County of Monterey's, Contract/Purchasing Solicitation Center website to gather information related to the bid at: <https://www.countyofmonterey.gov/government/departments-a-h/administrative-office/contracts-purchasing/solicitation-center>.

6. **Question:** Do you have a list of the GCs currently bidding this out, or can you point me to whoever's handling that?

Answer: Please be advised, the Mandatory Pre-Bid Meeting sign-in sheet has been provided as Attachment D to Addendum #1 published on 05/13/2026. The documents are available at the following link: <https://www.countyofmonterey.gov/government/departments-a-h/administrative-office/contracts-purchasing/solicitation-center>.

7. **Question:** There does not appear to be a Division 27 or Division 28 specification included in this bid package. Please advise if these systems are specifically excluded from the bid, and we should just provide raceway only, if specifications will be provided via addendum, or if these systems are all owner provided and installed.

Answer: Please consider the following: Divisions #27 & #28 shall be excluded from this bid package. The General Contractor's (GC) telecommunications/data low-voltage scope shall be limited to the installation of in-wall and under-slab conduit pathways, including pull strings and mud rings, in accordance with the data drop quantities and locations indicated on the Construction Documents. All conduit pathways shall be routed from the identified data outlet locations to the IT rack/IDF located in IT Closet 116. The GC shall also coordinate with the County's network fiber service vendor to provide the required underground conduit/pathway for the incoming fiber connection from at the street pole to the MPOE room located in IT Closet 116, as indicated on the drawings. The GC shall coordinate scheduling and access with the County's ITD vendor, AMS, for the following work to be performed by others: 1) Pulling, terminating, labeling, and testing CAT6 cabling point-to-point, including installation of associated faceplates for wall and floor box outlets. 2) Installation of wireless access points (WAPs). 3) Installation of the IT rack and associated IT equipment. All other low-voltage systems indicated on the drawings, including but not limited to fire alarm, security/access control and intrusion detection shall remain within the GC's scope of work.

EXHIBIT G & H

Bids DMC.com

From: orr@jmelectric.com
Sent: Thursday, June 11, 2026 8:47 AM
To: Bids DMC.com
Subject: RE: East Garrison Library
Attachments: JM Electric - EGL Revised Proposal.pdf

Follow Up Flag: Follow up
Flag Status: Completed

Nick

Attached revised proposal with pull boxes set up by us, couldn't add pole bases and drain rock in it

Let me know if any questions

Thanks

Oscar Ramos

J M ELECTRIC

400 Griffin Street / Salinas, CA 93901
831.422.7819 (Office) / 831.758.9638 (Fax)
orr@jmelectric.com / www.jmelectric.com

Proudly celebrating 75 years of guaranteed quality service!

From: Bids DMC.com <bids@dmcamp.com>
Sent: Thursday, June 11, 2026 6:54 AM
To: Oscar Ramos <orr@jmelectric.com>
Subject: RE: East Garrison Library

I have trenching covered and bollards

DOOR HARDWARE

DOOR SCHEDULE

DOOR NOTES

HARDWARE GROUP NO. 01

6	EA	HINGE	5BB1HW 4.5 X 4.5 NRP	613	IVE
2	EA	ELECTRIC HINGE	5BB1HW 4.5 X 4.5 CON TW8	613	IVE
1	EA	ELEC PANIC HARDWARE	RX-QELX-PA-AX-9850WDC-L-DT-17-LBL-SNB	313_US VON	105
1	EA	ELEC PANIC HARDWARE	RX-QELX-PA-AX-9850WDC-L-NL-17-LBL-CON-SNB	313_US VON	105
1	EA	RIM CYLINDER	20-057 ICX	613	SCH
2	EA	MORTISE CYLINDER	26-091 ICX XQ11-948	613	SCH
3	EA	INTERCHANGEABLE CORE	VERIFY PERMANENT CORE WITH OWNER	613	
2	EA	OH STOP	100S (ONLY @ LOCATIONS WHERE FS18S CAN'T BE USED)	613	GLY
2	EA	SURFACE CLOSER	4040XP EDA	695	LCN
2	EA	KICK PLATE	8400 10" X 1" LDW B-CS	613	IVE
2	EA	FLOOR STOP	FS18S	BLK	IVE
1	EA	RAIN DRIP	142D (OMIT WHERE OVERHANG OCCURS)	D	ZER
1	SET	MEETING STILE	328D-S	D	ZER
1	EA	GASKETING	488SBR PSA	BR	ZER
2	EA	DOOR SWEEP	39D	D	ZER
1	EA	THRESHOLD	158 SERIES	A	PEMKO

POWER SUPPLY - WORK OF DIVISION 28
DOOR CONTACT(S) - WORK OF DIVISION 28

HARDWARE GROUP NO. 02

3	EA	HINGE	5BB1HW 4.5 X 4.5 NRP	613	IVE
1	EA	ELECTRIC HINGE	5BB1HW 4.5 X 4.5 CON TW8	613	IVE
1	EA	ELEC PANIC HARDWARE	RX-QELX-PA-AX-98-L-KC-17	313_US VON	105
1	EA	RIM CYLINDER	20-057 ICX	613	SCH
1	EA	INTERCHANGEABLE CORE	VERIFY PERMANENT CORE WITH OWNER	613	
1	EA	OH STOP	100S (ONLY @ LOCATIONS WHERE FS18S CAN'T BE USED)	613	GLY
1	EA	SURFACE CLOSER	4040XP EDA	695	LCN
1	EA	KICK PLATE	8400 10" X 2" LDW B-CS	613	IVE
1	EA	FLOOR STOP	FS18S	BLK	IVE
1	EA	RAIN DRIP	142D (OMIT WHERE OVERHANG OCCURS)	D	ZER
1	EA	GASKETING	188SBR PSA	BR	ZER
2	EA	DOOR SWEEP	39D	D	ZER
1	EA	THRESHOLD	PER DETAIL		

CARD READER - WORK OF DIVISION 28
POWER SUPPLY - WORK OF DIVISION 28
DOOR CONTACT(S) - WORK OF DIVISION 28

HARDWARE GROUP NO. 03

3	EA	HINGE	5BB1HW 4.5 X 4.5 NRP	613	IVE
1	EA	ELECTRIC HINGE	5BB1HW 4.5 X 4.5 CON TW8	613	IVE
1	EA	EU MORTISE LOCK	LV9092TEU 17A RX CON 12/24 VDC	613	SCH
1	EA	INTERCHANGEABLE CORE	VERIFY PERMANENT CORE WITH OWNER	613	
1	EA	OH STOP	100S (ONLY @ LOCATIONS WHERE FS18S CAN'T BE USED)	613	GLY
1	EA	SURFACE CLOSER	4040XP EDA	695	LCN
1	EA	KICK PLATE	8400 10" X 2" LDW B-CS	613	IVE
1	EA	FLOOR STOP	FS18S	BLK	IVE
1	EA	RAIN DRIP	142D (OMIT WHERE OVERHANG OCCURS)	D	ZER
1	EA	GASKETING	188SBR PSA	BR	ZER
2	EA	DOOR SWEEP	39D	D	ZER
1	EA	THRESHOLD	PER DETAIL		

CARD READER - WORK OF DIVISION 28
POWER SUPPLY - WORK OF DIVISION 28
DOOR CONTACT(S) - WORK OF DIVISION 28

HARDWARE GROUP NO. 04

8	EA	HINGE	5BB1HW 4.5 X 4.5 NRP	613	IVE
1	EA	CONST LATCHING BOLT	FB51P 48"	US10B	IVE
1	EA	DUST PROOF STRIKE	DP1	613	IVE
1	EA	STOREROOM LOCK	LV9080T 17A	613	SCH
1	EA	INTERCHANGEABLE CORE	VERIFY PERMANENT CORE WITH OWNER	613	
1	EA	COORDINATOR	COR X FL	711	IVE
2	EA	MOUNTING BRACKET	MB	BLK	IVE
2	EA	OH STOP	100S (ONLY @ LOCATIONS WHERE FS18S CAN'T BE USED)	613	GLY
2	EA	SURFACE CLOSER	4040XP EDA	695	LCN
2	EA	KICK PLATE	8400 10" X 2" LDW B-CS	613	IVE
2	EA	FLOOR STOP	FS18S	BLK	IVE
1	EA	GASKETING	188SBR PSA	BR	ZER
2	EA	DOOR SWEEP	39D	D	ZER
1	EA	MEETING STILE	44STST OR BY HMD MFR	STST	ZER
1	EA	THRESHOLD	PER DETAIL (158 SERIES)		PEMKO

HARDWARE GROUP NO. 05

4	EA	HINGE	5BB1 4.5 X 4.5	640	IVE
1	EA	PANIC HARDWARE	PA-AX-98-L-17	313_US VON	105
1	EA	RIM CYLINDER	20-057 ICX	613	SCH
1	EA	INTERCHANGEABLE CORE	VERIFY PERMANENT CORE WITH OWNER	613	
1	EA	SURFACE CLOSER	4040XP RW/PA (MOUNT PUSH SIDE)	695	LCN
1	EA	KICK PLATE	8400 10" X 2" LDW B-CS	613	IVE
1	EA	WALL STOP	WS401/402CCV	613	IVE
1	EA	GASKETING	188SBR PSA	BR	ZER

HARDWARE GROUP NO. 06

4	EA	HINGE	5BB1 4.5 X 4.5	640	IVE
1	EA	PANIC HARDWARE	PA-AX-98-L-17	313_US VON	105
1	EA	RIM CYLINDER	20-057 ICX	613	SCH
1	EA	INTERCHANGEABLE CORE	VERIFY PERMANENT CORE WITH OWNER	613	
1	EA	SURFACE CLOSER	4040XP RW/PA (MOUNT PUSH SIDE)	695	LCN
1	EA	KICK PLATE	8400 10" X 2" LDW B-CS	613	IVE
1	EA	MAGNET	SEM7850 12V/24V/120V	695	LCN
1	EA	GASKETING	188SBR PSA	BR	ZER

NUMBER	TYPE	DOOR		NOMINAL DOOR SIZE			R.O. SIZE		FRAME	HARDWARE GROUP	GLASS TYPE	FIRE RATING	ACCESS CONTROL	WINDOW COVERINGS	WINDOW COVERINGS INSTALLATION TYPE	PRODUCT
		EXTERIOR FINISH	INT. FINISH	WIDTH	HEIGHT	THICK	WIDTH	HEIGHT								
D100	A	●	●	6'-0" (PAIR)	9'-0"	1'-3/4"	6'-3 3/16"	13'-4 1/8"	CLAD	01	GL-01			WT-3	SURFACE	MARVIN ULTIMATE COMMERCIAL DOOR UCD8090 W/ ROUND TOP TRANSOM - 4-9/16" FRAME
D102	C	●	●	3'-0"	8'-0"	1'-3/4"			HM	09						EGGERS SOLID CORE ei DOOR W/ WOODLAND FAUX WOOD PATTERN. PATTERN T.B.D.
D103	C	●	●	3'-0"	8'-0"	1'-3/4"			HM	09						EGGERS SOLID CORE ei DOOR W/ WOODLAND FAUX WOOD PATTERN. PATTERN T.B.D.
D104	E	●	●	3'-0"	8'-0"	1'-3/4"			HM	08						EGGERS SOLID CORE ei DOOR W/ WOODLAND FAUX WOOD PATTERN. PATTERN T.B.D.
D105.1	B1	●	●	3'-0"	8'-0"	1'-3/4"	3'-3 3/16"	8'-1 9/16"	CLAD	03	GL-01					MARVIN ULTIMATE COMMERCIAL DOOR UCD3080 - 6-9/16" FRAME
D105.2	C	●	●	3'-0"	8'-0"	1'-3/4"			HM	08		45 MIN.				EGGERS SOLID CORE ei DOOR W/ WOODLAND FAUX WOOD PATTERN. PATTERN T.B.D.
D106	E	●	●	3'-0"	8'-0"	1'-3/4"			HM	07						EGGERS SOLID CORE ei DOOR W/ WOODLAND FAUX WOOD PATTERN. PATTERN T.B.D.
D108	C	●	●	6'-0" (PAIR)	8'-0"	1'-3/4"			HM	12	GL-01					EGGERS SOLID CORE ei DOOR W/ WOODLAND FAUX WOOD PATTERN. PATTERN T.B.D.
D109	C (SIM.)	●	●	3'-0"	2'-10"	1'-3/4"			WD.	14						EGGERS SOLID CORE ei DOOR W/ WOODLAND FAUX WOOD PATTERN. PATTERN T.B.D.
D110-A	C	●	●	3'-0"	8'-0"	1'-3/4"			HM	11A						EGGERS SOLID CORE ei DOOR W/ WOODLAND FAUX WOOD PATTERN. PATTERN T.B.D.
D110-B	C	●	●	6'-0" (PAIR)	8'-0"	1'-3/4"			HM	13						EGGERS SOLID CORE ei DOOR W/ WOODLAND FAUX WOOD PATTERN. PATTERN T.B.D.
D112.1	B1	●	●	3'-0"	8'-0"	1'-3/4"			CLAD	02	GL-01			WT-3	SURFACE	MARVIN ULTIMATE COMMERCIAL DOOR UCD3080 - 6-9/16" FRAME
D112.2	C	●	●	3'-0"	8'-0"	1'-3/4"			HM	06						EGGERS SOLID CORE ei DOOR W/ WOODLAND FAUX WOOD PATTERN. PATTERN T.B.D.
D113.1	B1	●	●	3'-0"	8'-0"	1'-3/4"	3'-3 3/16"	8'-1 9/16"	CLAD	03	GL-01					MARVIN ULTIMATE COMMERCIAL DOOR UCD3080 - 6-9/16" FRAME
D113.2	E	●	●	3'-0"	8'-0"	1'-3/4"			HM	05						EGGERS SOLID CORE ei DOOR W/ WOODLAND FAUX WOOD PATTERN. PATTERN T.B.D.
D114	C	●	●	3'-0"	8'-0"	1'-3/4"			HM	10						EGGERS SOLID CORE ei DOOR W/ WOODLAND FAUX WOOD PATTERN. PATTERN T.B.D.
D115	C	●	●	3'-0"	8'-0"	1'-3/4"			HM	10						EGGERS SOLID CORE ei DOOR W/ WOODLAND FAUX WOOD PATTERN. PATTERN T.B.D.
D116	C	●	●	3'-0"	8'-0"	1'-3/4"			HM	11						EGGERS SOLID CORE ei DOOR W/ WOODLAND FAUX WOOD PATTERN. PATTERN T.B.D., ADD 24" X 18" DOOR LOUVERS, TOP & BOTTOM (x2)
D117	B2	●	●	6'-0" (PAIR)	8'-0"	1'-3/4"			HM	04						CECO MEDALLION HOLLOW METAL DOOR
G-01	G1			3'-0"	6'-0"	1/2"			ALUM.	15	GL-04					CRL PAINTED CUSTOM PLATINUM SERIES FULLY FRAMED ARCH. GATE SYSTEM (PLG1PTC) w/ 10" BOTTOM RAIL & 3" STILES

HARDWARE GROUP NO. 07

3	EA	HINGE	5BB1 4.5 X 4.5	640	IVE
1	EA	ELECTRIC HINGE	5BB1 4.5 X 4.5 CON TW8	613	IVE
1	EA	EU MORTISE LOCK	LV9092TEU 17A RX CON 12/24 VDC	613	SCH
1	EA	INTERCHANGEABLE CORE	VERIFY PERMANENT CORE WITH OWNER	613	
1	EA	SURFACE CLOSER	4040XP RW/PA (MOUNT PULL SIDE)	695	LCN
1	EA	KICK PLATE	8400 10" X 2" LDW B-CS	613	IVE
1	EA	FLOOR STOP	FS436/FS438 AS REQ.	613	IVE
1	EA	GASKETING	188SBR PSA	BR	ZER

CARD READER - WORK OF DIVISION 28
POWER SUPPLY - WORK OF DIVISION 28
DOOR CONTACT(S) - WORK OF DIVISION 28

HARDWARE GROUP NO. 08

4	EA	HINGE	5BB1 4.5 X 4.5	640	IVE
1	EA	OFFICE/ENTRY LOCK	L9056T 17A L583-363	613	SCH
1	EA	INTERCHANGEABLE CORE	VERIFY PERMANENT CORE WITH OWNER	613	
1	EA	SURFACE CLOSER	4040XP RW/PA (MOUNT PULL SIDE)	695	LCN
1	EA	KICK PLATE	8400 10" X 2" LDW B-CS	613	IVE
1	EA	WALL STOP	WS401/402CCV	613	IVE
1	EA	GASKETING	188SBR PSA	BR	ZER

HARDWARE GROUP NO. 09

4	EA	HINGE	5BB1 4.5 X 4.5	640	IVE
1	EA	PRIVACY W/INDICATOR	L9056T 17A L583-363	613	SCH
1	EA	INTERCHANGEABLE CORE	VERIFY PERMANENT CORE WITH OWNER	613	
1	EA	SURFACE CLOSER	4040XP RW/PA (MOUNT PULL SIDE)	695	LCN
1	EA	KICK PLATE	8400 10" X 2" LDW B-CS	613	IVE
1	EA	MOP PLATE	8400 4" X 2" LDW B-CS	613	IVE
1	EA	WALL STOP	WS401/402CCV	613	IVE
1	EA	GASKETING	188SBR PSA	BR	ZER

HARDWARE GROUP NO. 10

4	EA	HINGE	5BB1HW 4.5 X 4.5	640	IVE
1	EA	PUSH PLATE	8200 6" X 16"	613	IVE
1	EA	PULL PLATE	8302 10" 4" X 16"	613	IVE
1	EA	SURFACE CLOSER	4040XP RW/PA (MOUNT PULL SIDE)	695	LCN
1	EA	KICK PLATE	8400 10" X 2" LDW B-CS	613	IVE
1	EA	MOP PLATE	8400 4" X 2" LDW B-CS	613	IVE
1	EA	WALL STOP	WS401/402CCV	613	IVE
1	EA	GASKETING	188SBR PSA	BR	ZER

HARDWARE GROUP NO. 11

4	EA	HINGE	5BB1 4.5 X 4.5	640	IVE
1	EA	ACCESSIBLE STOREROOM LOCK	L9081T 17A	613	SCH
1	EA	INTERCHANGEABLE CORE	VERIFY PERMANENT CORE WITH OWNER	613	
1	EA	SURFACE CLOSER	4040XP SCUSH	695	LCN
1	EA	KICK PLATE	8400 10" X 2" LDW B-CS	613	IVE
1	EA	GASKETING	188SBR PSA	BR	ZER

HARDWARE GROUP NO. 11A

4	EA	HINGE	5BB1 4.5 X 4.5	640	IVE
1	EA	ACCESSIBLE STOREROOM LOCK	L9081T 17A	613	SCH
1	EA	INTERCHANGEABLE CORE	VERIFY PERMANENT CORE WITH OWNER	613	
1	EA	SURFACE CLOSER	4040XP RW/PA (MOUNT PULL SIDE)	695	LCN
1	EA	KICK PLATE	8400 10" X 2" LDW B-CS	613	IVE
1	EA	GASKETING	188SBR PSA	BR	ZER

HARDWARE GROUP NO. 12

8	EA	HINGE	5BB1 4.5 X 4.5	640	IVE
1	EA	CONST LATCHING BOLT	FB51T 48"	US10B	IVE
1	EA	ACCESSIBLE STOREROOM LOCK	L9081T 17A	613	SCH
1	EA	INTERCHANGEABLE CORE	VERIFY PERMANENT CORE WITH OWNER	613	
1	EA	SURFACE CLOSER	4040XP RW/PA (MOUNT PUSH SIDE AND ACTIVE LEAF ONLY)	695	LCN
2	EA	KICK PLATE	8400 10" X 1" LDW B-CS	613	IVE
2	EA	WALL STOP	WS401/402CCV	613	IVE
1	EA	MEETING STILE	44STST	STST	ZER
1	EA	SILENCER	SR64	GRY	IVE

HARDWARE GROUP NO. 13

8	EA	HINGE	5BB1 4.5 X 4.5	640	IVE
1	EA	CONST LATCHING BOLT	FB51T 48"	US10B	IVE
1	EA	ACCESSIBLE STOREROOM LOCK	L9081T 17A	613	SCH
1	EA	INTERCHANGEABLE CORE	VERIFY PERMANENT CORE WITH OWNER	613	
1	EA	OH STOP	90S (INACTIVE LEAF)	613	GLY
1	EA	SURFACE CLOSER	4040XP CUSH (ACTIVE LEAF)	695	LCN
2	EA	KICK PLATE	8400 10" X 1" LDW B-CS	613	IVE
1	EA	MEETING STILE	44STST	STST	ZER
2	EA	SILENCER	SR64	GRY	IVE

HARDWARE GROUP NO. 14

2	EA	HINGE	5BB1 4.5 X 4.5	640	IVE
1	EA	MAGNETIC DOOR CATCH	4EVN4 (OR EQUAL)	STEEL	SUGASTUNE

HARDWARE GROUP NO. 15

1	EA	FLOOR CLOSER	MODEL 27 (INCLUDES TOP PIVOT)	RIX	
1	EA	ELECTRIFIED PIVOT	EM19	RIX	
1	EA	ELEC PANIC HARDWARE	LD-RX-LC-OUT-PA-AX-99-L-NL-17-VH1	626	VON
1	EA	RIM CYLINDER	20-057 ICX	626	SCH
1	EA	INTERCHANGEABLE CORE	VERIFY PERMANENT CORE WITH OWNER	626	
1	EA	ELECTRIC STRIKE	6300 FSE 12/24 VAC/VDC	630	VON

CARD READER - WORK OF DIVISION 28
POWER SUPPLY - WORK OF DIVISION 28
DOOR CONTACT(S) - WORK OF DIVISION 28

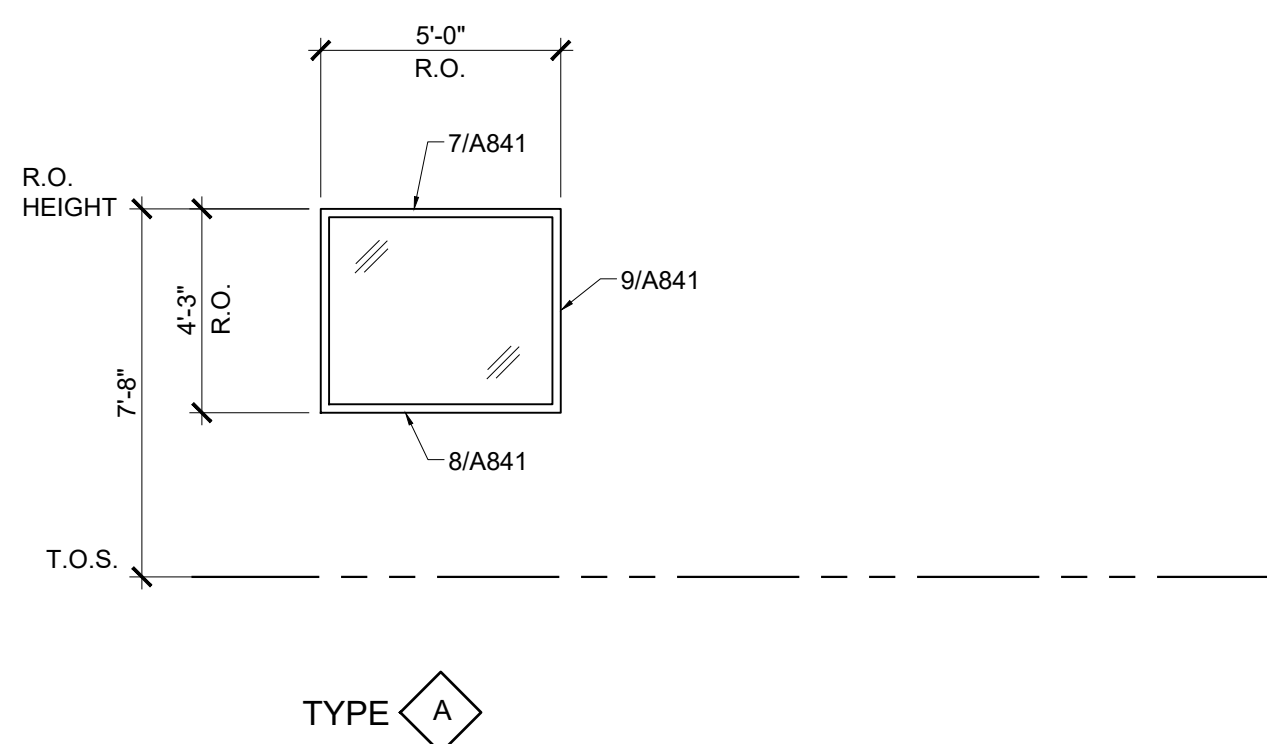
- ALL SWINGING DOORS TO ACCESSIBLE SPACES SHALL COMPLY W/ THE FOLLOWING (U.N.O.):
- CONTRACTOR SHALL SUBMIT FULL SHOP DRAWINGS FOR ALL DOORS & HARDWARE.
 - BOTTOM 12" SHALL BE A SMOOTH, SOLID SURFACE AT THE BOTTOM.
 - BE OPERABLE FROM THE INSIDE WITHOUT SPECIAL KNOWLEDGE OR EFFORT.
 - OPERABLE DOOR HARDWARE TO BE MOUNTED 34" MIN. TO 48" MAX. ABOVE FINISH FLOOR OR GROUND.
 - THRESHOLD CHANGE IN HEIGHT BETWEEN FLOOR SURFACES ON EITHER SIDE OF DOOR SHALL NOT EXCEED 1/2".
 - LEVER TYPE LATCHSET AND LOCKSET HANDLES SHALL COMPLY WITH TITLE-24 ACCESSIBILITY REQUIREMENTS.
 - PRESSURE TO OPERATE EXTERIOR AND INTERIOR DOORS SHALL NOT EXCEED 5.0 lbs., AND FIRE RATED DOORS SHALL MEET THIS REQUIREMENT.
 - PROVIDE ACCESSIBLE HARDWARE THAT DOES NOT REQUIRE TIGHT GRASPING, PINCHING OR TWISTING OF THE WRIST.
 - ALL EXTERIOR DOORS TO BE WEATHER STRIPPED WITH PEMKO S880 WEATHER STRIPPING, U.N.O.
 - ALL EXTERIOR DOORS TO HAVE TOP CLOSER STRIP, U.N.O.
 - AUTOMATIC FLUSH BOLTS ARE ALLOWED ONLY ON PAIRS OF DOORS WHERE THE DOOR WITH THE BOLT HAS NO KNOBS OR SURFACE-MOUNTED HARDWARE.
 - ALL HOLLOW METAL DOOR FRAMES SHALL HAVE WELDED CORNERS, GROUND SMOOTH WITH REINFOR

WINDOW SCHEDULE

WINDOW TAG	TYPE	ROUGH OPENING		GLASS TYPE	PRODUCT	EXTERIOR FINISH	INTERIOR FINISH	WINDOW COVERING	WINDOW COVERINGS INSTALLATION TYPE	WINDOW COVERINGS MOTORIZED CONTROL GROUP
		WIDTH	HEIGHT							
W1.0	A	5'-0"	4'-3"	GL-06	HOLLOW METAL FRAMED FIXED	FACTORY PRIME	FACTORY PRIME	WT-1	FLUSH INSIDE MOUNT, SEE 7/A841	1
W2.0	A	5'-0"	4'-3"	GL-06	HOLLOW METAL FRAMED FIXED	FACTORY PRIME	FACTORY PRIME	WT-1	FLUSH INSIDE MOUNT, SEE 7/A841	2
W2.1	SEE DOOR SCHEDULE			GL-01	MARVIN ULTIMATE DOUBLE HUNG PICTURE ROUND TOP G2 - 4-9/16" FRAME	HAMPTON SAGE	FACTORY PAINTED WHITE	WT-1	RECESSED IN FURRED WALL, SEE 10/A839	3
W3.0	B	6'-1"	7'-11 5/8"	GL-01	MARVIN ULTIMATE DOUBLE HUNG PICTURE ROUND TOP G2 - 4-9/16" FRAME	HAMPTON SAGE	FACTORY PAINTED WHITE	WT-1	RECESSED IN FURRED WALL, SEE 10/A839	3
W4.0	D	3'-1"	5'-11 5/8"	GL-01	MARVIN ULTIMATE DOUBLE HUNG PICTURE ROUND TOP G2 - 4-9/16" FRAME	HAMPTON SAGE	FACTORY PAINTED WHITE	-	-	-
W5.0	D	3'-1"	5'-11 5/8"	GL-01	MARVIN ULTIMATE DOUBLE HUNG PICTURE ROUND TOP G2 - 4-9/16" FRAME	HAMPTON SAGE	FACTORY PAINTED WHITE	-	-	-
W6.0	F	3'-1"	5'-11 5/8"	GL-05	MARVIN ULTIMATE DOUBLE HUNG PICTURE G2 - 4-9/16" FRAME	HAMPTON SAGE	FACTORY PAINTED WHITE	-	-	-
W7.0	F	3'-1"	5'-11 5/8"	GL-05	MARVIN ULTIMATE DOUBLE HUNG PICTURE G2 - 4-9/16" FRAME	HAMPTON SAGE	FACTORY PAINTED WHITE	-	-	-
W8.0	D	3'-1"	5'-11 5/8"	GL-01	MARVIN ULTIMATE DOUBLE HUNG PICTURE ROUND TOP G2 - 4-9/16" FRAME	HAMPTON SAGE	FACTORY PAINTED WHITE	WT-1	SURFACE MOUNT, SEE 4/A839	5
W9.0	D	3'-1"	5'-11 5/8"	GL-01	MARVIN ULTIMATE DOUBLE HUNG PICTURE ROUND TOP G2 - 4-9/16" FRAME	HAMPTON SAGE	FACTORY PAINTED WHITE	WT-1	SURFACE MOUNT, SEE 4/A839	5
W10.0	D	3'-1"	5'-11 5/8"	GL-01	MARVIN ULTIMATE DOUBLE HUNG PICTURE ROUND TOP G2 - 4-9/16" FRAME	HAMPTON SAGE	FACTORY PAINTED WHITE	WT-1	SURFACE MOUNT, SEE 4/A839	5
W11.0	D	3'-1"	5'-11 5/8"	GL-01	MARVIN ULTIMATE DOUBLE HUNG PICTURE ROUND TOP G2 - 4-9/16" FRAME	HAMPTON SAGE	FACTORY PAINTED WHITE	WT-1	SURFACE MOUNT, SEE 4/A839	6
W12.0	D	3'-1"	5'-11 5/8"	GL-01	MARVIN ULTIMATE DOUBLE HUNG PICTURE ROUND TOP G2 - 4-9/16" FRAME	HAMPTON SAGE	FACTORY PAINTED WHITE	WT-1	SURFACE MOUNT, SEE 4/A839	6
W13.0	D	3'-1"	5'-11 5/8"	GL-01	MARVIN ULTIMATE DOUBLE HUNG PICTURE ROUND TOP G2 - 4-9/16" FRAME	HAMPTON SAGE	FACTORY PAINTED WHITE	WT-1	SURFACE MOUNT, SEE 4/A839	6
W14.0	D	3'-1"	5'-11 5/8"	GL-01	MARVIN ULTIMATE DOUBLE HUNG PICTURE ROUND TOP G2 - 4-9/16" FRAME	HAMPTON SAGE	FACTORY PAINTED WHITE	WT-1	SURFACE MOUNT, SEE 4/A839	6
W15.0	D	3'-1"	5'-11 5/8"	GL-01	MARVIN ULTIMATE DOUBLE HUNG PICTURE ROUND TOP G2 - 4-9/16" FRAME	HAMPTON SAGE	FACTORY PAINTED WHITE	WT-1	SURFACE MOUNT, SEE 4/A839	6
W16.0	D	3'-1"	5'-11 5/8"	GL-01	MARVIN ULTIMATE DOUBLE HUNG PICTURE ROUND TOP G2 - 4-9/16" FRAME	HAMPTON SAGE	FACTORY PAINTED WHITE	-	-	-
W17.0	C	6'-1"	12'-6 7/8"	GL-01	MARVIN ULTIMATE DOUBLE HUNG PICTURE ROUND TOP G2 - 4-9/16" FRAME	HAMPTON SAGE	FACTORY PAINTED WHITE	WT-1	RECESSED IN FURRED WALL, SEE 10/A839	7
W18.0	C	6'-1"	12'-6 7/8"	GL-01	MARVIN ULTIMATE DOUBLE HUNG PICTURE ROUND TOP G2 - 4-9/16" FRAME	HAMPTON SAGE	FACTORY PAINTED WHITE	WT-1	RECESSED IN FURRED WALL, SEE 10/A839	7
W19.0	C	6'-1"	12'-6 7/8"	GL-01	MARVIN ULTIMATE DOUBLE HUNG PICTURE ROUND TOP G2 - 4-9/16" FRAME	HAMPTON SAGE	FACTORY PAINTED WHITE	WT-1	RECESSED IN FURRED WALL, SEE 10/A839	7
W20.0	D	3'-1"	5'-11 5/8"	GL-05	MARVIN ULTIMATE DOUBLE HUNG PICTURE ROUND TOP G2 - 4-9/16" FRAME	HAMPTON SAGE	FACTORY PAINTED WHITE	-	-	-
W21.0	D	3'-1"	5'-11 5/8"	GL-01	MARVIN ULTIMATE DOUBLE HUNG PICTURE ROUND TOP G2 - 4-9/16" FRAME	HAMPTON SAGE	FACTORY PAINTED WHITE	WT-2	RECESSED IN CEILING POCKET, SEE 7/A839	8
W22.0	D	3'-1"	5'-11 5/8"	GL-01	MARVIN ULTIMATE DOUBLE HUNG PICTURE ROUND TOP G2 - 4-9/16" FRAME	HAMPTON SAGE	FACTORY PAINTED WHITE	WT-2	RECESSED IN CEILING POCKET, SEE 7/A839	8
W23.0	D	3'-1"	5'-11 5/8"	GL-01	MARVIN ULTIMATE DOUBLE HUNG PICTURE ROUND TOP G2 - 4-9/16" FRAME	HAMPTON SAGE	FACTORY PAINTED WHITE	WT-2	RECESSED IN CEILING POCKET, SEE 7/A839	8
W24.0	D	3'-1"	5'-11 5/8"	GL-01	MARVIN ULTIMATE DOUBLE HUNG PICTURE ROUND TOP G2 - 4-9/16" FRAME	HAMPTON SAGE	FACTORY PAINTED WHITE	WT-2	RECESSED IN CEILING POCKET, SEE 7/A839	8
W25.0	D	3'-1"	5'-11 5/8"	GL-01	MARVIN ULTIMATE DOUBLE HUNG PICTURE ROUND TOP G2 - 4-9/16" FRAME	HAMPTON SAGE	FACTORY PAINTED WHITE	WT-2	RECESSED IN CEILING POCKET, SEE 7/A839	8
W26.0	D	3'-1"	5'-11 5/8"	GL-01	MARVIN ULTIMATE DOUBLE HUNG PICTURE ROUND TOP G2 - 4-9/16" FRAME	HAMPTON SAGE	FACTORY PAINTED WHITE	WT-2	RECESSED IN CEILING POCKET, SEE 7/A839	8
W27.0	D	3'-1"	5'-11 5/8"	GL-01	MARVIN ULTIMATE DOUBLE HUNG PICTURE ROUND TOP G2 - 4-9/16" FRAME	HAMPTON SAGE	FACTORY PAINTED WHITE	WT-2	RECESSED IN CEILING POCKET, SEE 7/A839	8
W28.0	D	3'-1"	5'-11 5/8"	GL-01	MARVIN ULTIMATE DOUBLE HUNG PICTURE ROUND TOP G2 - 4-9/16" FRAME	HAMPTON SAGE	FACTORY PAINTED WHITE	WT-2	RECESSED IN CEILING POCKET, SEE 7/A839	8
W29.0	B	6'-1"	7'-11 5/8"	GL-01	MARVIN ULTIMATE CASEMENT PICTURE ROUND TOP CUSTOM SIZE - 4-9/16" FRAME	HAMPTON SAGE	FACTORY PAINTED WHITE	WT-1	RECESSED IN FURRED WALL, SEE 10/A839	3
W30.0	G	3'-1"	1'-11 5/8"	GL-01	MARVIN ULTIMATE DOUBLE HUNG PICTURE G2 - 4-9/16" FRAME	HAMPTON SAGE	FACTORY PAINTED WHITE	WT-1A	SURFACE MOUNT, SEE 4/A839	9
W31.0	G	3'-1"	1'-11 5/8"	GL-01	MARVIN ULTIMATE DOUBLE HUNG PICTURE G2 - 4-9/16" FRAME	HAMPTON SAGE	FACTORY PAINTED WHITE	WT-1A	SURFACE MOUNT, SEE 4/A839	9
W32.0	G	3'-1"	1'-11 5/8"	GL-01	MARVIN ULTIMATE DOUBLE HUNG PICTURE G2 - 4-9/16" FRAME	HAMPTON SAGE	FACTORY PAINTED WHITE	WT-1A	SURFACE MOUNT, SEE 4/A839	9
W32.1	G	3'-1"	1'-11 5/8"	GL-01	MARVIN ULTIMATE DOUBLE HUNG PICTURE G2 - 4-9/16" FRAME	HAMPTON SAGE	FACTORY PAINTED WHITE	WT-1A	SURFACE MOUNT, SEE 4/A839	9
W33.0	G	3'-1"	1'-11 5/8"	GL-01	MARVIN ULTIMATE DOUBLE HUNG PICTURE G2 - 4-9/16" FRAME	HAMPTON SAGE	FACTORY PAINTED WHITE	WT-1A	SURFACE MOUNT, SEE 4/A839	9
W34.0	G	3'-1"	1'-11 5/8"	GL-01	MARVIN ULTIMATE DOUBLE HUNG PICTURE G2 - 4-9/16" FRAME	HAMPTON SAGE	FACTORY PAINTED WHITE	WT-1A	SURFACE MOUNT, SEE 4/A839	9
W35.0	G	3'-1"	1'-11 5/8"	GL-01	MARVIN ULTIMATE DOUBLE HUNG PICTURE G2 - 4-9/16" FRAME	HAMPTON SAGE	FACTORY PAINTED WHITE	-	-	-
W36.0	G	3'-1"	1'-11 5/8"	GL-01	MARVIN ULTIMATE DOUBLE HUNG PICTURE G2 - 4-9/16" FRAME	HAMPTON SAGE	FACTORY PAINTED WHITE	-	-	-
W37.0	G	3'-1"	1'-11 5/8"	GL-01	MARVIN ULTIMATE DOUBLE HUNG PICTURE G2 - 4-9/16" FRAME	HAMPTON SAGE	FACTORY PAINTED WHITE	-	-	-
W37.1	G	3'-1"	1'-11 5/8"	GL-01	MARVIN ULTIMATE DOUBLE HUNG PICTURE G2 - 4-9/16" FRAME	HAMPTON SAGE	FACTORY PAINTED WHITE	-	-	-
W38.0	G	3'-1"	1'-11 5/8"	GL-01	MARVIN ULTIMATE DOUBLE HUNG PICTURE G2 - 4-9/16" FRAME	HAMPTON SAGE	FACTORY PAINTED WHITE	-	-	-
W39.0	G	3'-1"	1'-11 5/8"	GL-01	MARVIN ULTIMATE DOUBLE HUNG PICTURE G2 - 4-9/16" FRAME	HAMPTON SAGE	FACTORY PAINTED WHITE	-	-	-

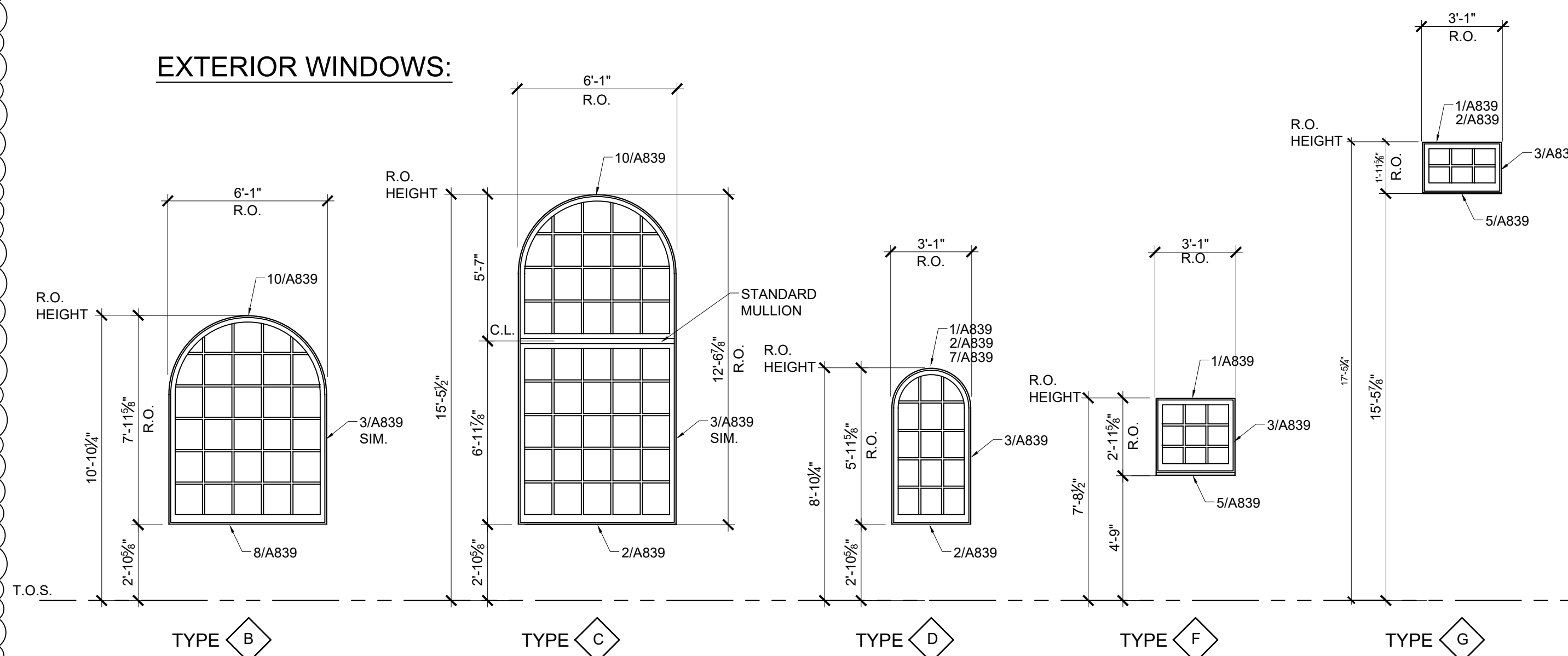
WINDOW TYPES

INTERIOR WINDOWS:



TYPE A

EXTERIOR WINDOWS:



TYPE B

TYPE C

TYPE D

TYPE E

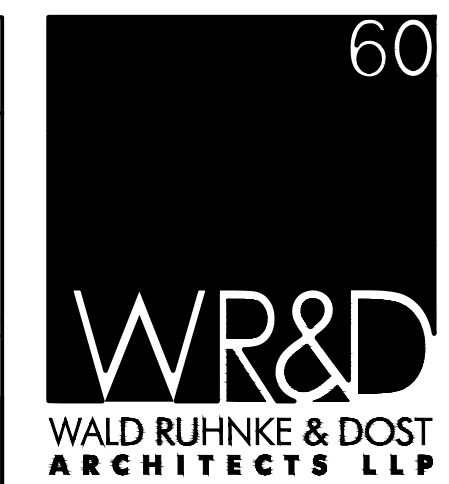
TYPE F

WINDOW NOTES

- CONTRACTOR IS RESPONSIBLE FOR REVIEWING FLOOR PLAN AND INTERIOR / EXTERIOR ELEVATIONS FOR VERIFICATION OF QUANTITY AND LOCATIONS OF WINDOW TYPES.
- ALL GLAZING SHALL BE APPROVED SAFETY GLASS AND COMPLY WITH CBC SECTION 2406. A CERTIFICATE MUST ACCOMPANY ALL GLAZING PRODUCTS STATING THAT THE PRODUCTS CONFORM WITH APPLICABLE CONSUMER PRODUCT SAFETY STANDARDS.
- ALL ROUGH OPENING DIMENSIONS SHALL BE FIELD VERIFIED PRIOR TO ORDERING.
- SDSL DIVIDED LITES SHALL BE 1-1/8" WITH SPACER BAR BETWEEN GLASS.
- WINDOWS SHALL BE MARVIN ULTIMATE CASEMENT WITH PUTTY EXTERIOR & OGEE INTERIOR & WITH OPTIONAL TALL BOTTOM RAIL (EXCEPT UPPER PORTION OF TYPE C)
- ALL HOLLOW METAL WINDOW FRAMES SHALL HAVE WELDED CORNERS, GROUND SMOOTH, WITH REINFORCED CORNERS AND HINGE LOCATIONS.

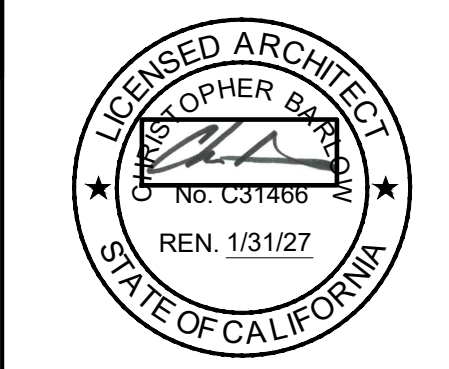
GLASS TYPES

- GL-01: 1" INSULATED GLASS UNIT (I.G.U.); 1/2" CLEAR TEMPERED W/ SOLARBAN 70 #2, 1/2" ARGON, 1/4" CLEAR TEMPERED)
 - GL-02: 1/4" CLEAR TEMPERED GLASS
 - GL-03: 1/2" CLEAR TEMPERED GLASS
 - GL-04: (WINDSCREEN SYSTEM) 9/16" CLEAR TEMPERED-LAMINATED GLASS
 - GL-05: (FROSTED PRIVACY GLASS) 1" INSULATED GLASS UNIT (I.G.U.); 1/2" ACID ETCHED #1 TEMPERED W/ SOLARBAN 70 #2, 1/2" ARGON, 1/4" CLEAR TEMPERED)
 - GL-06: (INTERIOR S.T.C. GLASS) 1/2" LAMINATED & TEMPERED - (1/4" CLEAR TEMPERED, 0.060" PVB, 1/4" CLEAR TEMPERED)
- ALL GLASS LITES FOR ALL GLASS TYPES TO BE FULLY TEMPERED



2340 GARDEN ROAD, SUITE 100
MONTEREY, CALIFORNIA 93940
PHONE: 831.649.4642
FAX: 831.649.3530
WWW.WRDARCH.COM

THE USE OF THE PLANS AND SPECIFICATIONS IS RESTRICTED TO THE ORIGINAL SITE FOR WHICH THEY WERE PREPARED, AND PUBLICATION THEREOF IS EXPRESSLY LIMITED TO SUCH USE. REUSE, REPRODUCTION OR PUBLICATION BY ANY METHOD IN WHOLE OR IN PART IS PROHIBITED. TITLE TO THE PLANS AND SPECIFICATIONS REMAINS WITH THE ARCHITECT, AND VISUAL CONTACT WITH THEM CONSTITUTES FRAUDULENT EVIDENCE OF THE VIOLATION OF THESE RESTRICTIONS.



MONTEREY COUNTY EAST GARRISON LIBRARY
MONTEREY COUNTY
13993 SHERMAN BLVD.
MARINA, CA 93933
A.P.N.: 031-164-130-000

JOB NO.: 23159
PRINT DATE:
PLOT DATE: 11.10.2025
DRAWN BY: SC
CHECKED BY: SC
SET ISSUED:
PERMIT SUB: 6/20/2025
BACKCHECK #1: 1/9/2025

SHEET NAME:
WINDOW SCHEDULE
SHEET NO.:

A302
FILE NAME: 23159-A302

