

Exhibit E

This page intentionally left blank.

Floor & Lot area data for the neighboring houses of 2897 Seventeen Mile Drive

(Data from Zillow or Redfin – note that these sources do not include the floor area of the garage, which is included in the FAR. Where no data is available, 2 car garages are assumed to be 450 square feet, 3-car garages at 600 square feet)

Address	Lot size & 35% FAR	House + Garage size
2917	9147 x .35 = 3201	3400
2913	8700 x .35 = 3045	2998
2909	9583 x .35 = 3354	3732
2905	9583 x .35 = 3354	3569
2901	11325 x .35 = 3964	2418
2893	10000 x .35 = 3500	?
2889	9701 x .35 = 3395	3026
2885	9800 x .35 = 3430	3236
2881	10228 x .35 = 3580	3682
2877	10497 x .35 = 3674	4200
2873	10454 x .35 = 3659	3600
2869	10018 x .35 = 3506	2562
2865	12632 x .35 = 4421	4369
2861	9700 x .35 = 3395	3682
Oak Knoll homes		
2900	10100 x .35 = 3535	3622
2904	10018 x .35 = 3506	3416

Narrative:

Of the 14 homes along this block of Seventeen Mile Drive, and the 2 houses immediately behind the site, 11 are 2-story and one is 2 ½ stories tall (or 75% of the total).

Likewise, of the 16 houses, 11 are 97% or more of the allowable FAR. Note also that many of the houses have large 2-story volumes inside that are only counted once for FAR, along with large covered porches enclosed on 3-sides, so the actual mass of the houses is greater than the FAR suggests. The proposed home at 2897 Seventeen Mile Drive does not have 2-story volumes, and a modest –sized covered porch.

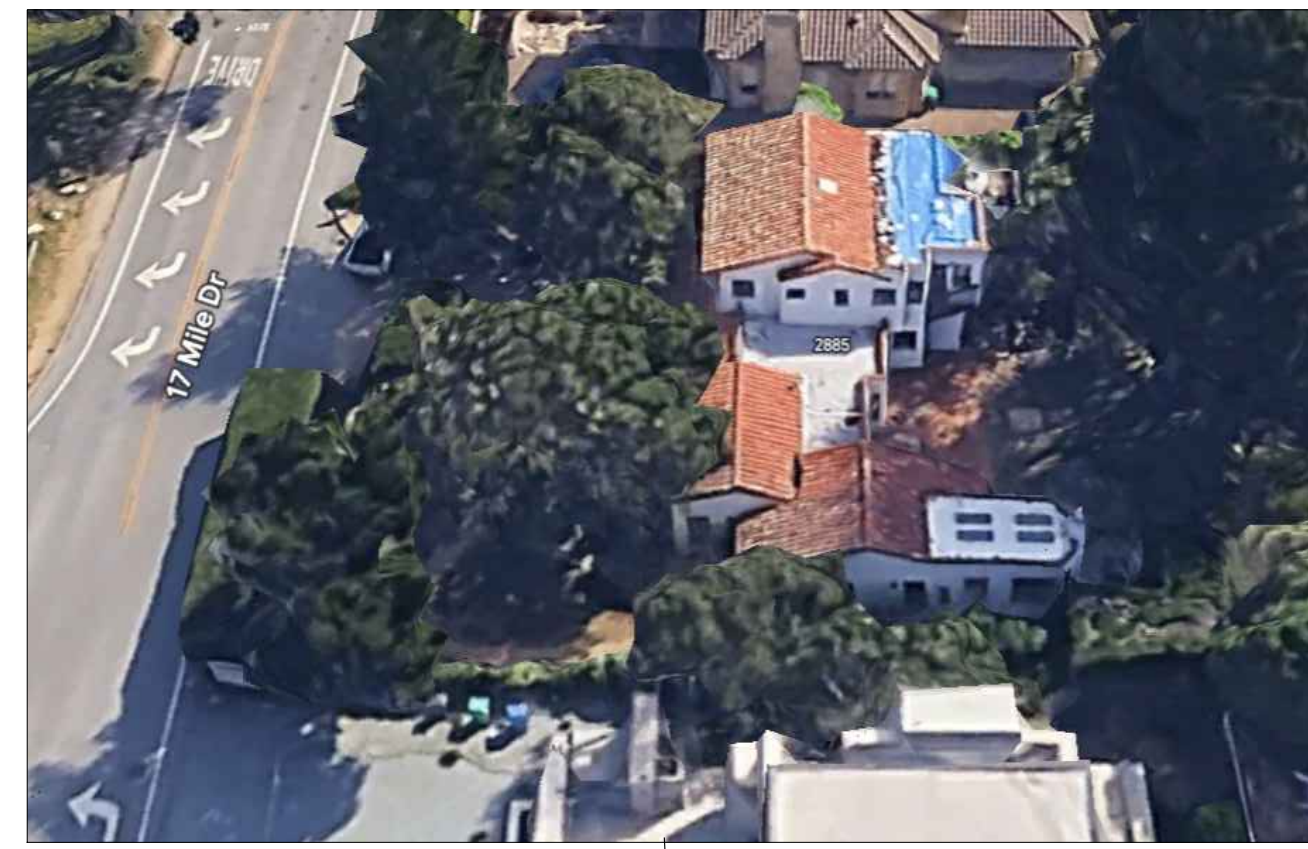
Finally, many of the new homes 2900 Oak Knoll & 2865, 2873 & 2889 Seventeen Mile Drive are very ‘boxy’ with large 2-story facades, unlike the proposed home at 2897.



2901 SEVENTEEN MILE DRIVE



2889 SEVENTEEN MILE DRIVE



2885 SEVENTEEN MILE DRIVE



2881 SEVENTEEN MILE DRIVE



2877 SEVENTEEN MILE DRIVE



2905 SEVENTEEN MILE DRIVE

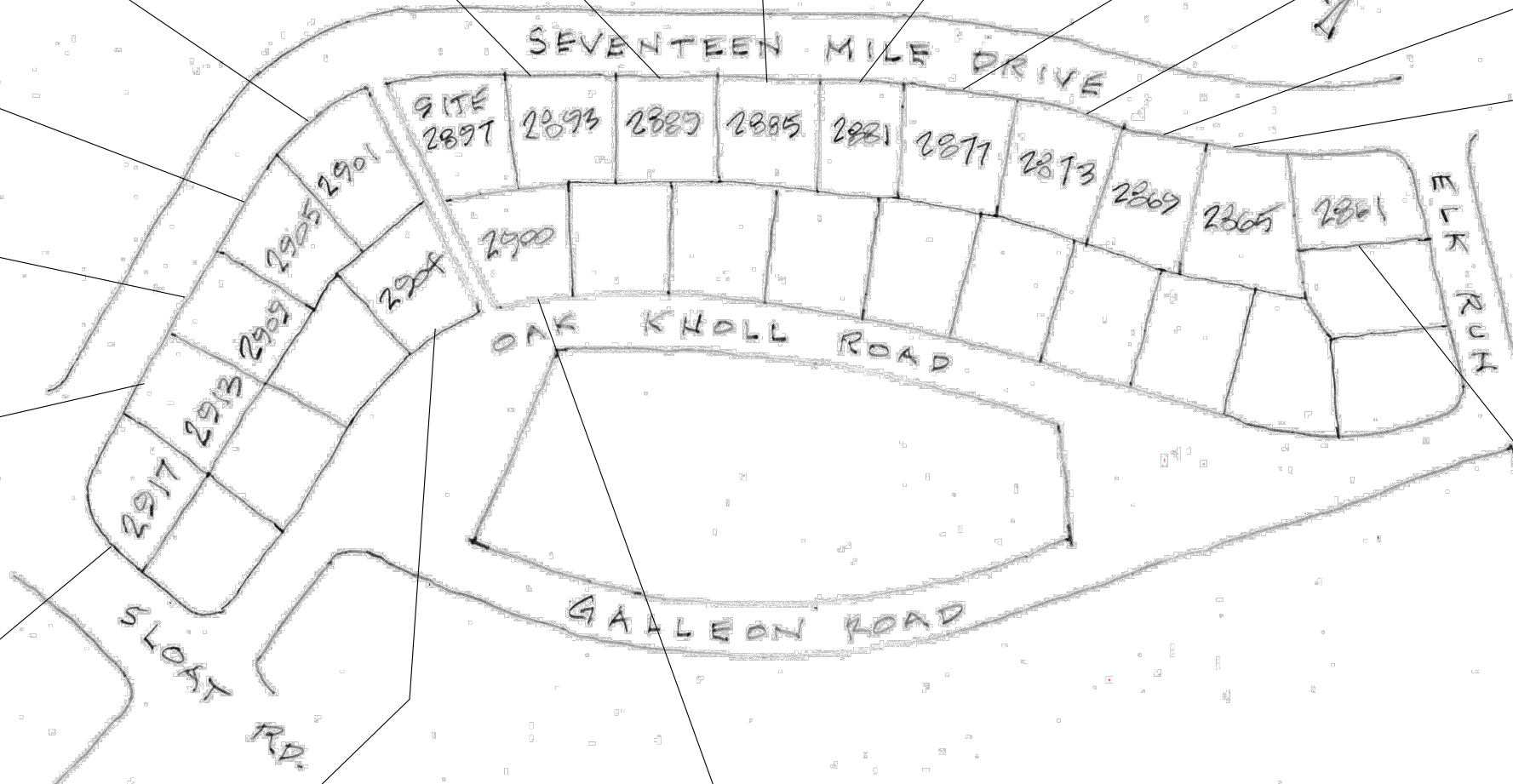
2893 SEVENTEEN MILE DRIVE - NO PHOTO (RECENTLY REMODELED)



2873 SEVENTEEN MILE DRIVE



2909 SEVENTEEN MILE DRIVE



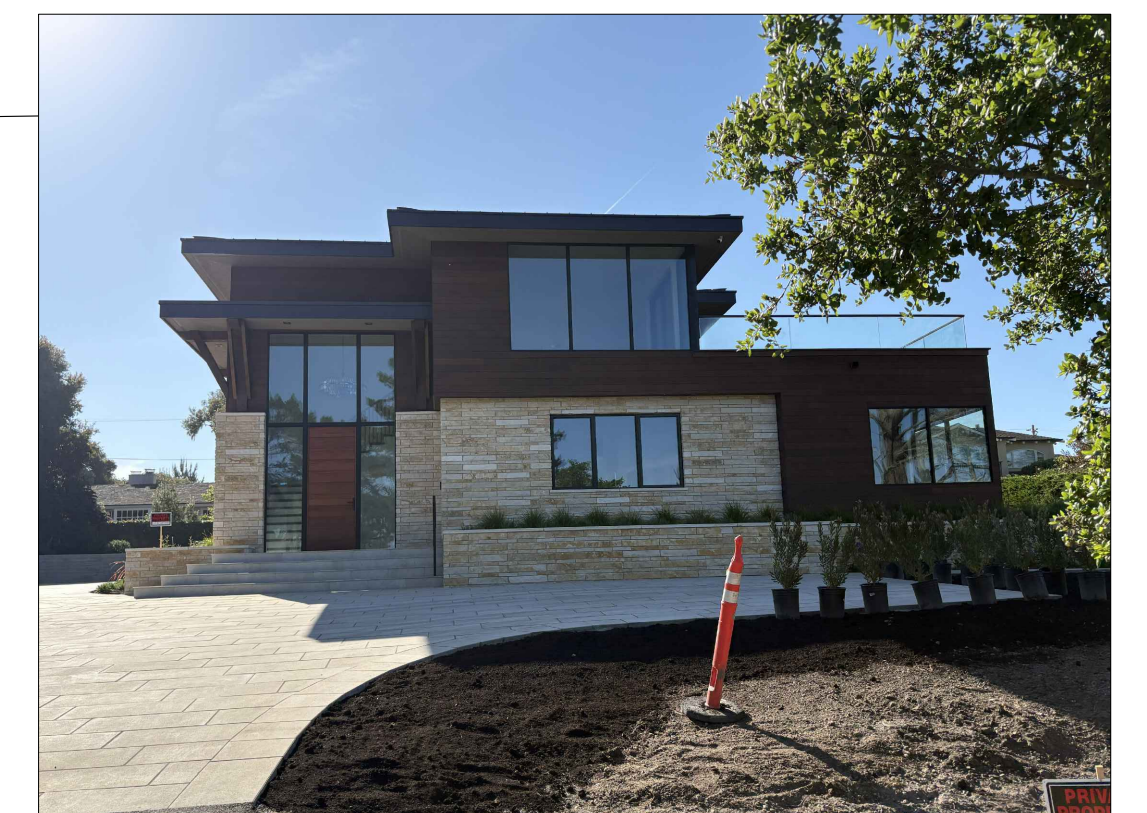
NEIGHBORHOOD MAP



2869 SEVENTEEN MILE DRIVE



2913 SEVENTEEN MILE DRIVE



2865 SEVENTEEN MILE DRIVE



2917 SEVENTEEN MILE DRIVE



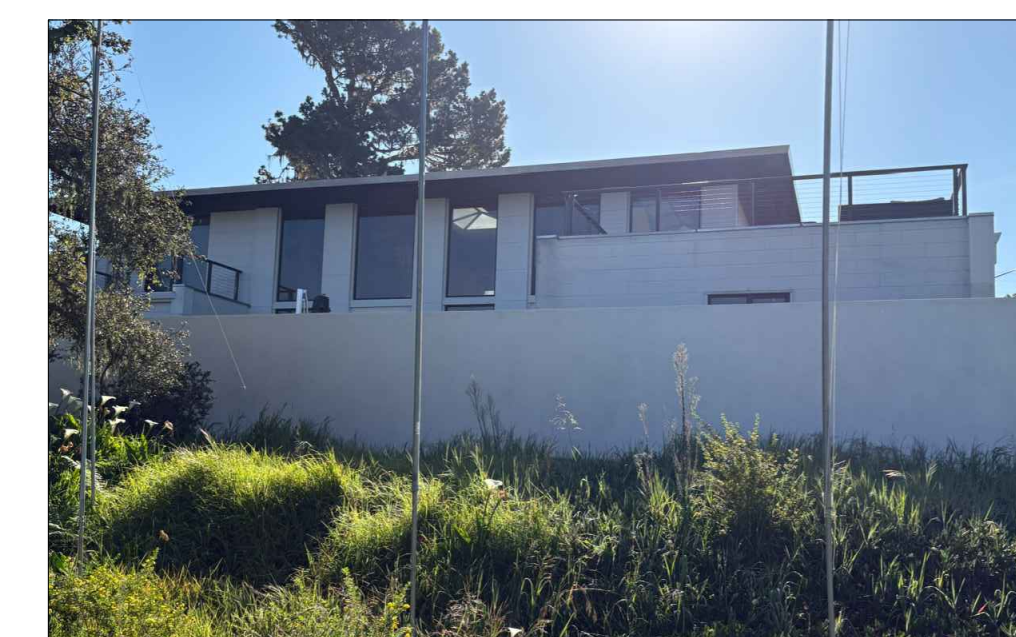
2900 OAK KNOLL ROAD - AERIAL VIEW



2904 OAK KNOLL ROAD - FRONT VIEW



2900 OAK KNOLL ROAD - FRONT VIEW



2900 OAK KNOLL ROAD - BACK VIEW



2861 SEVENTEEN MILE DRIVE