



COUNTY OF MONTEREY



# COVID-19 MEMORIAL

---

BOARD REFERRAL NO. 2021.05

# Today's Actions:

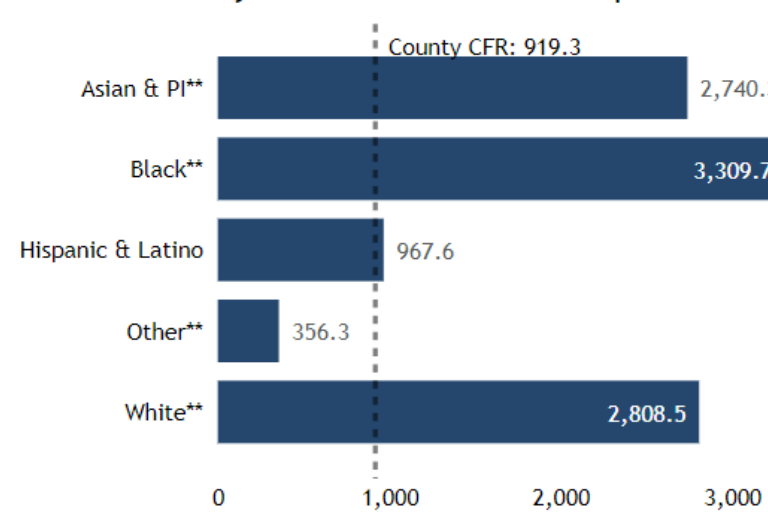
---

- ❖ Authorize the Department of Public Works, Facilities, & Parks to implement the County-wide COVID-19 Memorial Project in response to Board Referral No. 2021.05
- ❖ Provide direction to Staff for the location of the permanent COVID-19 Memorial
- ❖ Approve proposed design concepts to be further developed through a Community Engagement strategy
- ❖ Direct that the COVID-19 Memorial Project be added to the approved FY2021/22 Funded Capital Projects list, total project estimated value \$515,780





## All-time CFR by Racial and Ethnic Group



## Confirmed Fatalities

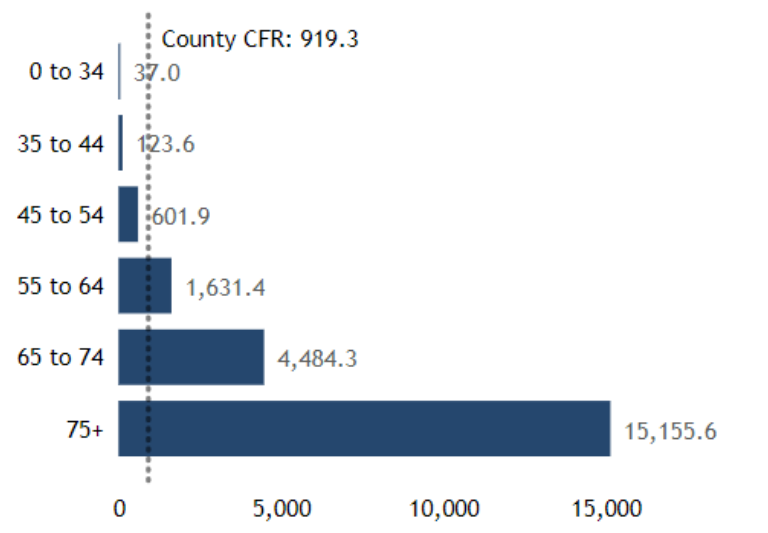
**722**  
Records Missing Racial and Ethnic Information  
7

Racial and Ethnic Group	Deaths	Percent of All Deaths	Percent of Population
Asian & PI**	63	8.8%	5.5%
Black**	28	3.9%	2.3%
Hispanic & Latino	405	56.6%	60.9%
Other**	6	0.8%	2.8%
White**	213	29.8%	28.3%

As of March 14, 2022, the Monterey County Health Department Covid-19 data dashboard reports 722 Covid Fatalities among Monterey County Residents

Chart information is provisional and subject to change. For the most recent data, please visit the County's Covid-19 website: [2019 novel Coronavirus \(COVID-19\) | Monterey County, CA](#)

## All-time Case Fatality Rate by Age Group



## Confirmed Fatalities

**722**  
Records Missing Age Information  
0

Age Group	Deaths	Percent of All Deaths	Percent of Population
0 to 34	15	2.1%	49.9%
35 to 44	17	2.4%	14.2%
45 to 54	65	9.0%	11.1%
55 to 64	124	17.2%	10.7%
65 to 74	160	22.2%	8.4%
75+	341	47.2%	5.8%





Monterey County  
Government Center  
Campus  
168 West Alisal, Salinas

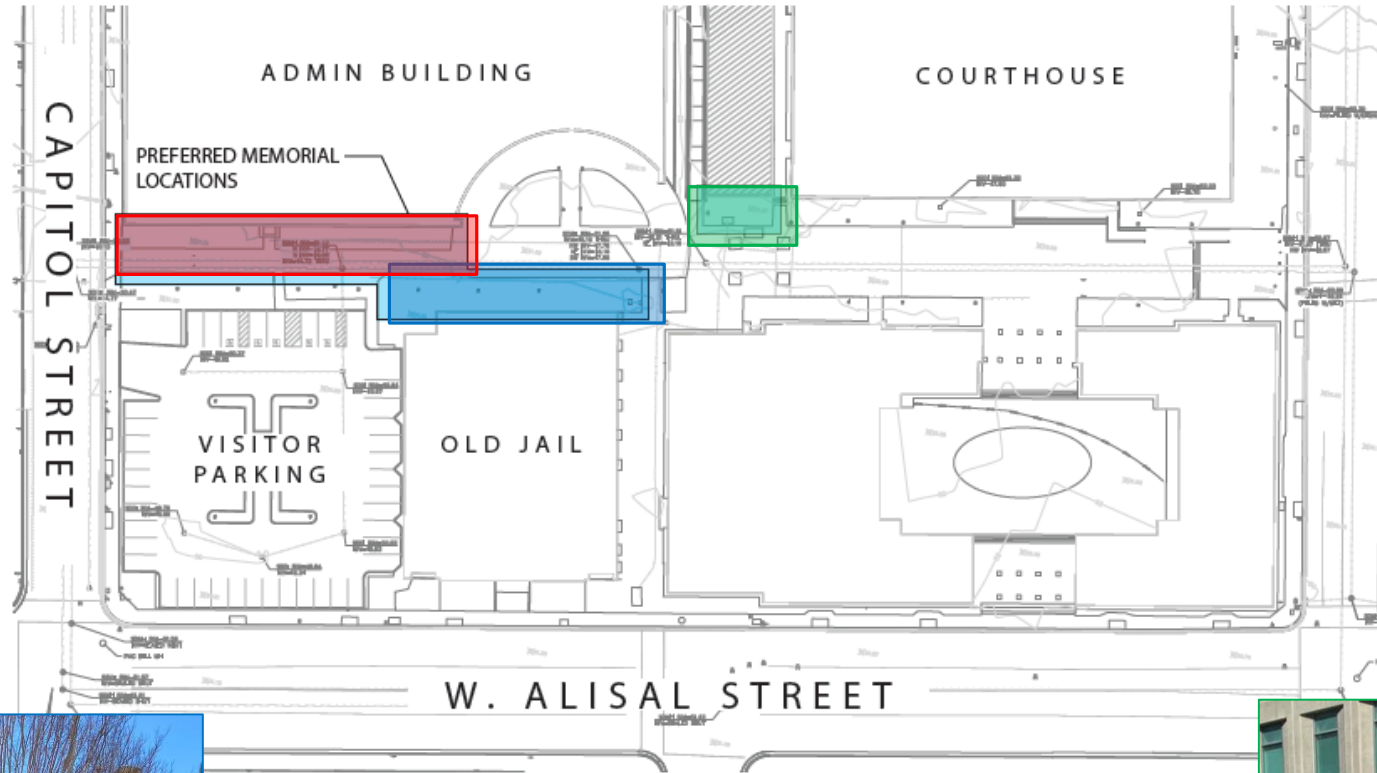




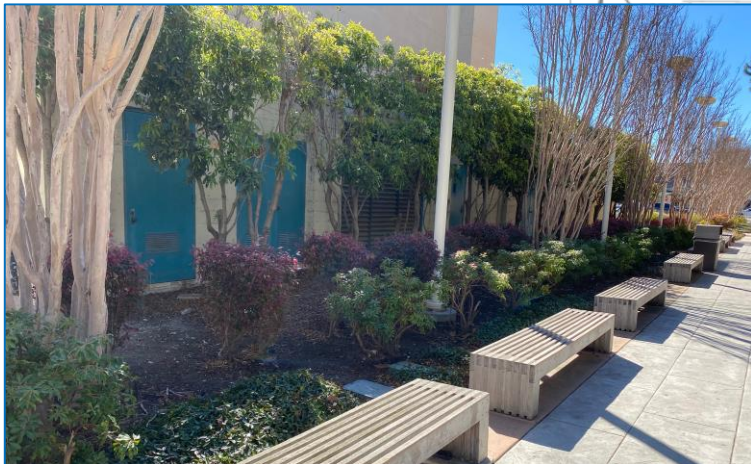
# Potential Locations



**Location No. 1:** Walkway & planting areas between Capital Street and Administration building



**Note:** All locations identified will maintain drivable space for Fire/Emergency vehicle access and will not narrow or obstruct the existing path. In addition, the locations maintain clear view of corridors, and will not block visibility from the street or from the adjacent building windows.



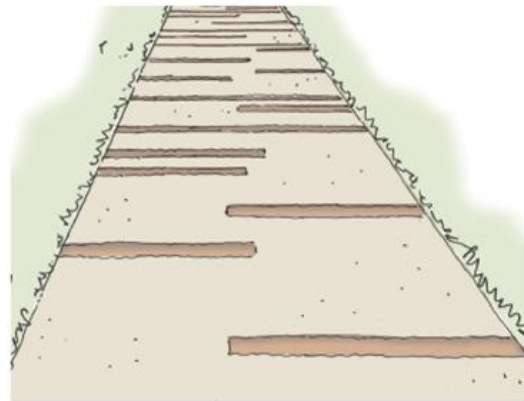
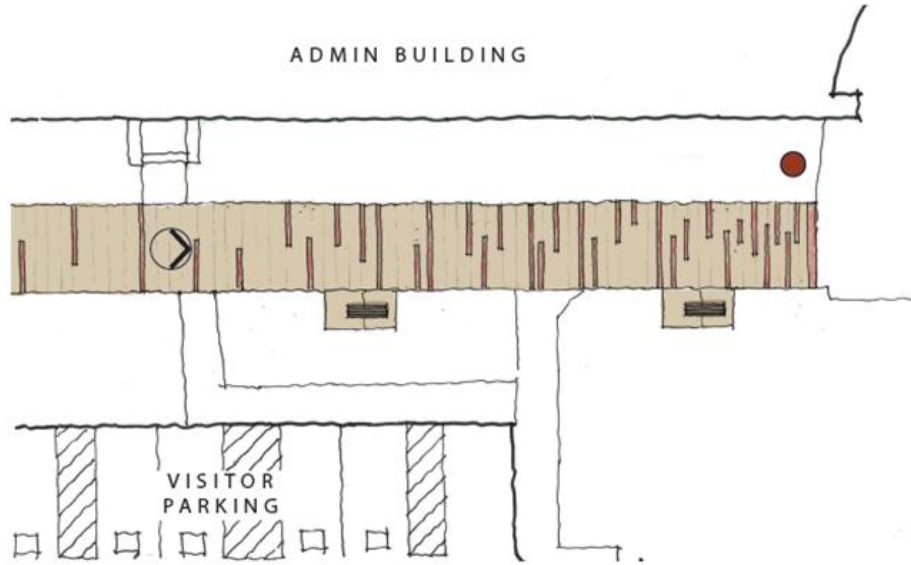
**Location No. 2:** Planting area adjacent to the Old Jail building.



**Location No. 3:** Planting area between the Courthouse and Administration building

# COVID-19 MEMORIAL PROJECT

## Concept A – Embedded/Etched Elements



Utilize the existing pedestrian path leading from Capitol Street to main building entry

Embed brass or steel elements into walkway flatwork or etch a decorative pattern into the surface

Embedded elements or pattern will create a cohesive visual picture

Milestones along pathway will allow visitors to experience the memorial while moving through the space. Benches provide areas for contemplation.

Freestanding sculptural element at the end with an informational signage panel in Spanish and English describing the memorial with a QR code linking to County COVID-19 Memorial Website

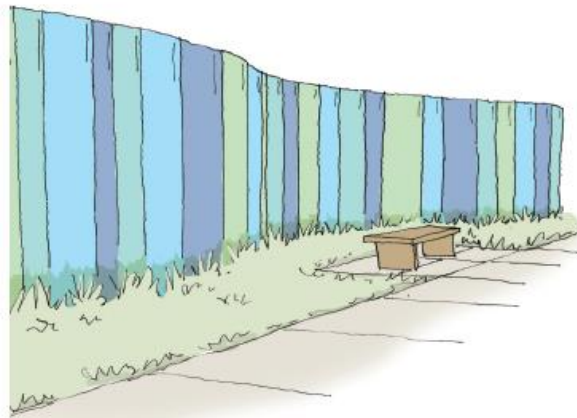
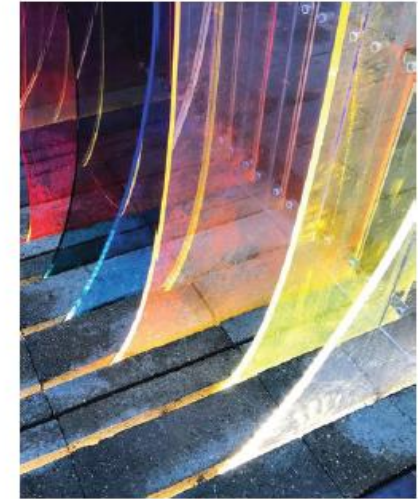
Solar lighting, drought tolerant plant material, and recycled materials to be used where appropriate





# COVID-19 MEMORIAL PROJECT

## Concept B – Transparent Color Wall



Continuous undulating freestanding wall made of colored acrylic panels signifying the diversity and connection of Monterey County residents

Opportunity to engrave names, text, and/or images into the acrylic

Benches allow for quiet contemplation

Wall height determined after a review of view corridors

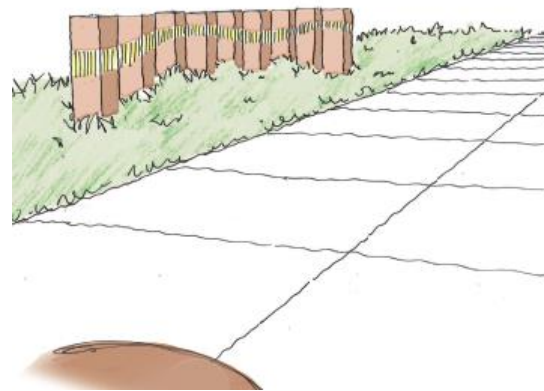
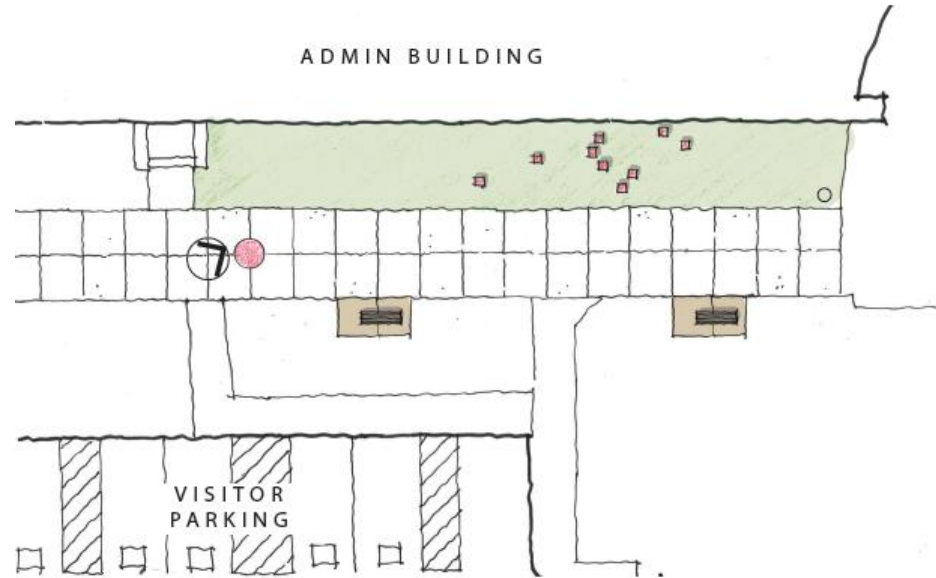
Wall will be transparent to maintain visibility  
Lighting incorporated to allow colors to cast out onto planting areas

Solar lighting, drip irrigation, drought tolerant plant material, and recycled materials to be used where appropriate



# COVID-19 MEMORIAL PROJECT

## Concept C – Lighted Steel Columns



Artistic interpretation of National COVID-19 Memorial in Washington DC

Lighted steel columns with cutout illustrative pattern or series of words

Benches allow for quiet contemplation

Medallion in concrete walkway at vantage point where columns align and create a unified visual element

Informational signage in Spanish and English describing artwork with a QR code linking to County COVID-19 Memorial Website

Solar lighting, drought tolerant plant material, and recycled materials to be used where appropriate





# COVID-19 MEMORIAL PROJECT

## Community Engagement Strategy

---

- ❖ Outreach Assembly: Create project website, create project surveys for public distribution, assemble project graphics, identify review team, share goals with stakeholder groups
- ❖ Public Meeting #1: Introduce project and goals. Share website with the public and solicit involvement via online surveys and submission of poetry, images, and other ideas to be included in the memorial
- ❖ Open submissions via website
- ❖ Review submissions, create implementation plan, create report to share with public
- ❖ Present Findings to Board of Supervisors
- ❖ Public Meeting #2: Share findings with the public
- ❖ Assemble Final Report

# COVID-19 Memorial Project Budget

---

Total Project Estimated Costs \$515,780

## ARCHITECTURAL/ENGINEERING

Design/Engineering/Environmental	\$ 74,000
Artist Fees (10%)	\$ 25,845
Staff	\$ 31,000
Permitting (3%)	\$ 6,254

## CONSTRUCTION MANAGEMENT

CM (15%)	\$ 31,268
----------	-----------

## CONSTRUCTION

Construction Contract	\$ 189,504
Construction Contingency (10%)	\$ 18,950

## FURNITURE, FIXTURE, EQUIPMENT

ITD/Equipment	\$ 10,423
---------------	-----------

<b><u>PROJECT CONTINGENCY</u></b>	<b>\$ 128,536</b>
-----------------------------------	-------------------



# COVID-19 Memorial Project Sequencing

---

- ❖ Design – 2 months
- ❖ Community Engagement – 4 months
- ❖ Permitting and County Review – 2 months
- ❖ Construction – 8-12 Months

# Today's Actions:

---

- ❖ Authorize the Department of Public Works, Facilities, & Parks to implement the County-wide COVID-19 Memorial Project in response to Board Referral No. 2021.05
- ❖ Provide direction to Staff for the location of the permanent COVID-19 Memorial
- ❖ Approve proposed design concepts to be further developed through a Community Engagement strategy
- ❖ Direct that the COVID-19 Memorial Project be added to the approved FY2021/22 Funded Capital Projects list, total project estimated value \$511,780